

Environmental Protection Act 1986

Section 43A

**NOTICE OF DECISION TO CONSENT TO AMEND A REFERRED PROPOSAL
DURING ASSESSMENT**

PERSON TO WHOM THIS NOTICE IS GIVEN

(a) Hamersley Iron Pty Limited (ACN: 49 004 558 276)
152-158 St Georges Terrace
PERTH WA 6000

PROPOSAL TO WHICH THIS NOTICE RELATES:

Brockman Syncline Proposal
Assessment No. 2219

Pursuant to s. 43A of the *Environmental Protection Act 1986* (EP Act), the Environmental Protection Authority (EPA) gives approval to the assessment of the proposal being completed in respect of the proposal as amended in accordance with the proponent's request:

- Amendment to the Proposal Content Document to reflect the emissions calculations in the Brockman Syncline Proposal Greenhouse Gas Environmental Management Plan (August 2023).
- Proposal Elements with Greenhouse Gas Emissions:
 - **Scope 1:** increase in forecast peak annual Scope 1 emissions for the proposal by 85,500 tonnes (t) CO₂-e, resulting in 497,046 t CO₂-e/annum for the proposal expansion (significant amendment) and 847,815 t CO₂-e/annum for the revised proposal (combined existing operations and the proposal expansion).
 - **Scope 2:** increase in forecast peak annual Scope 2 emissions for the proposal by 8,928 t CO₂-e, resulting in 84,080 t CO₂-e/annum for the proposal expansion and 116,723 t CO₂-e/annum for the revised proposal.
 - **Scope 3:** decrease in total Scope 3 emissions for the proposal by 296 million tonnes (Mt) CO₂-e, resulting in 1014 Mt CO₂-e for the proposal expansion and 1,773 Mt CO₂-e for the revised proposal.

The amended proposal content document is attached.

SUMMARY OF REASONS

- The change in emissions is due to final recalculations of Scope 1 and Scope 2 emissions based on an updated mine plan and preparation of the Greenhouse Gas Environmental Management Plan (August 2023) in accordance with EPA Greenhouse Gas Emissions Environmental Factor Guideline (April 2023).
- Although the 8-week public environmental review was previously undertaken from 18 September 2023 to 13 November 2023 the estimated emissions, as amended, were provided in the publicly available greenhouse gas environmental management plan (Appendix H1 of the environmental review document).
- As there are no new environmental factors identified as a result of the amendments, there are no additional EPA functions that need to be performed to assess the amended proposal.
- The amended proposal will still be substantially the same character as the existing referred proposal.
- The Proposal Content Document has been amended to reflect the emissions calculations in the Brockman Syncline Proposal Greenhouse Gas Environmental Management Plan (GHG EMP), ERD Appendix H1.

EFFECT OF THIS NOTICE:

1. The assessment of the proposal is to be completed in respect of the proposal as amended in accordance with the decision set out in this notice.
2. The proposal as amended in accordance with this notice is taken to have been referred to the EPA under s. 38 of the EP Act.

RIGHTS OF APPEAL:

There are no rights of appeal under the EP Act in respect of this decision.



Lee McIntosh
Delegate of the Environmental Protection Authority
DEPUTY CHAIR

5 September 2024

Attachment 1- Amended Proposal Content Document

Proposal Content Document

Table 1: Summary of the Proposal

Component	Existing Description (as approved via s43a, December 2022)	Proposed Amendment Description
Proposal Title	Brockman Syncline Proposal	No Change
Proponent Name	Hamersley Iron Pty Limited (ACN 004 558 276)	No Change
Short Description	<p>The Brockman Syncline Proposal (the Proposal) is located approximately 60 km west-northwest of Tom Price in the central Pilbara region of Western Australia. The Proposal is located within the Native Title Determination Areas of the Puutu Kunti Kurrama and Pinikura People and the Eastern Guruma People.</p> <p>The Proposal includes the extension and development of new above and below water table deposits and associated activities to extend the life of existing iron ore operations at Brockman Syncline 2, Brockman Syncline 4 and Nammuldi-Silvergrass.</p> <p>The Proposal also includes, but is not limited to the following:</p> <ul style="list-style-type: none"> • Development of new deposits and extensions of existing operations, including above water table and below water table mining: • Ore processing, transport and handling infrastructure • Ore, topsoil and subsoil stockpiles • Mineral waste management including, but not limited to: <ul style="list-style-type: none"> ○ Waste rock dumps ○ Storage of waste fines ○ Land bridges ○ Low-grade ore dumps • Surface water management infrastructure, including but not limited to: <ul style="list-style-type: none"> ○ Diversion drains ○ Levees ○ Culverts 	No Change

Component	Existing Description (as approved via s43a, December 2022)	Proposed Amendment Description
	<ul style="list-style-type: none"> • Infrastructure for groundwater abstraction and utilisation • Dewatering and surplus water management, including but not limited to: <ul style="list-style-type: none"> ○ Use in ore processing ○ On-site use, including discharge to disused pits ○ Use at the Nammuldi irrigated agriculture project ○ Infiltration to the aquifer ○ Provision to other users ○ Discharge to creeks lines • Other associated mine infrastructure and support facilities and upgrades, including but not limited to: <ul style="list-style-type: none"> ○ Accommodation camps ○ Workshops ○ Hydrocarbon and ANFO storage ○ Laydown areas, offices and accommodation facilities ○ Linear infrastructure including but not limited to: <ul style="list-style-type: none"> - Heavy and light vehicle access roads - Crushing and conveying systems - Pipe and power lines (including sub-stations) - Utilities and communications distribution networks - Rail and associated infrastructure - Renewable energy infrastructure. 	

Table 2: Proposal key characteristics

Element	Location	Brockman Syncline Proposal Extent as approved by s43a, December 2022	Proposed Amendment	Revised Proposal Extent (as amended)
Physical Elements				
Mine and associated infrastructure	Error! Reference source not found.	Clearing of up to 19,805 ha within a 63,343 ha Development Envelope.	No change	No change
Irrigated Infrastructure	Error! Reference source not found.	Clearing of up to 2,500 ha within the Nammuldi Irrigated Area within a 63,343 ha Development Envelope.	No change	No change
Operational Elements				
Groundwater abstraction for water supply and mine dewatering	N/A	Abstraction of up to 50 GL/a	No change	No change
Management of surplus water	Error! Reference source not found.	Surplus water management options include: <ul style="list-style-type: none"> • Use on site • Discharge to disused pits • Irrigated agriculture at Nammuldi • Injection to the aquifer • Provision to other users • Controlled discharge to the environment via Duck and Boolgeeda Creek with a wetting front not exceeding 67 and 37 km respectively, under natural no-flow conditions 	No change	No change

Element	Location	Brockman Syncline Proposal Extent as approved by s43a, December 2022	Proposed Amendment	Revised Proposal Extent (as amended)
Backfill of pits	N/A	<ul style="list-style-type: none"> • Partial backfill of Pits 1, 4, 4 extension, 5 and 6 at BS2¹ • Backfill of BS2 pit to sufficient depth to ensure that, following mine closure and backfilling, the ground water table will permanently remain at least 3 metres below the lowest point of the pit floor² • All open cut Marra Mamba pits in the Silvergrass area to be backfilled to above the post-mining water table levels³ • BS4 Mine pits are to be backfilled so that the final surface level are at a higher elevation than the pre-mining groundwater level to prevent the formation of pit lakes (Pits 2, 3, 4, 5, 6, 7, 10, 11, 12, 15, 16, 17 and 18)⁴ • Backfill of BS3 Extension Deposits (MMJ and Creekside) to above post mining recovered water levels 	No change	No change
Proposal Elements with Greenhouse Gas Emissions				
Scope 1 ⁵	Diesel and land clearing – no more than 411,546 t CO ₂ -e/annum	Increase in forecast peak annual Scope 1 emissions for the Proposal by 85,500 tCO ₂ -e	Proposal ⁷ : Diesel and land clearing – no more than 497,046 t CO ₂ -e/annum Revised Proposal ⁸ : 847,815 t CO ₂ -e/annum	
Scope 2 ⁵	Electricity – no more than 75,152 t CO ₂ -e/annum	Increase in forecast peak annual Scope 2 emissions for the Proposal by 8,928 tCO ₂ -e	Proposal ⁷ : Electricity – no more than 84,080 t CO ₂ -e/annum Revised Proposal ⁸ : 116,723 t CO ₂ -e/annum	

Element	Location	Brockman Syncline Proposal Extent as approved by s43a, December 2022	Proposed Amendment	Revised Proposal Extent (as amended)
Scope 3 ⁶	1,310 Mt CO ₂ -e		Decrease in total Scope 3 emissions for the Proposal by 296 Mt CO ₂ -e	Proposal ⁷ : 1,014 Mt CO ₂ -e Revised Proposal ⁸ : 1,773 Mt CO ₂ -e
Rehabilitation and Closure				
<p>The key closure outcome is to rehabilitate the site to create a safe, stable and non-polluting landscape consistent with the post-mining land use and to maintain environmental and cultural heritage values.</p> <p>Rehabilitation and closure activities will be carried out in accordance with the approved Mine Closure Plan.</p>				
Other Elements which Affect the Extent of Impact on the Environment				
Proposal time	Maximum project life.	Operational phase estimated to be 25 years (not including construction and closure implementation phases).		

¹ Previous condition required under MS 131

² Previous condition required under MS 867

³ Previous condition required under MS 925

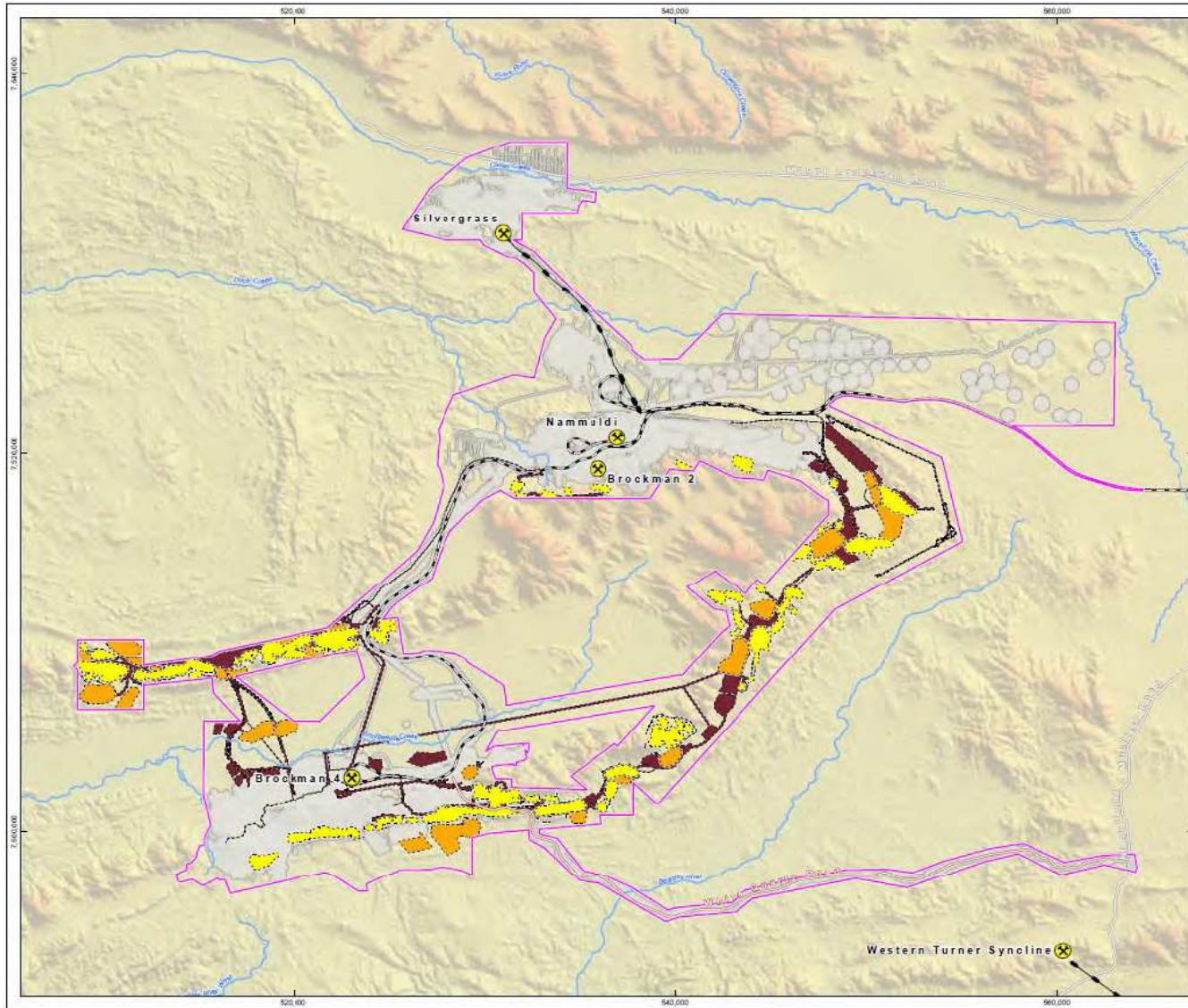
⁴ Previous condition required under MS 1000

⁵ Predicted peak annual emissions

⁶ Attributable over the life of the operations

⁷ Proposal activities not including existing operations (as defined in Section 1.3 of the published Environmental Review Document (ERD))

⁸ Both existing operations and the Proposal (as defined in Section 1.3 of the published Environmental Review Document (ERD))



RioTinto

Figure 1-1
Development Envelope and
Indicative Location of Key
Proposal Elements

Drawn: L.Fuentes Proj: ODA 1994 MDA Zone 50
 Plan: P050182235v1 Scale: 1:195,000 @AS
 Date: July 2023 GIS Team@rio.tinto.com

- Legend**
- Development Envelope
 - Part IV Indicative Approved Footprint
 - Conceptual Footprint**
 - Pit
 - Waste Rock Landform
 - Infrastructure
 - Rio Tinto Mine
 - Rio Tinto Railway
 - Conveyor
 - Major Road
 - Minor Road
 - Site Access Road
 - Major Creek

