

***Environmental Protection Act 1986*****Section 43A****NOTICE OF DECISION TO CONSENT TO AMEND A REFERRED PROPOSAL  
DURING ASSESSMENT****PERSON TO WHOM THIS NOTICE IS GIVEN**

(a) Talison Lithium Australia Pty Ltd (ACN: 139 401 308)  
RSN 1662 Maranup Ford Road  
GREENBUSHES WA 6254

**PROPOSAL TO WHICH THIS NOTICE RELATES:**

Greenbushes Lithium Mine: Waste Rock Landforms, Salt Water Gully Dam and additional clearing for infrastructure  
Assessment No. 2496

Pursuant to s. 43A of the *Environmental Protection Act 1986* (EP Act), the Environmental Protection Authority (EPA) gives approval to the assessment of the proposal being completed in respect of the proposal as amended in accordance with the proponent's request:

- overall increase in development envelope (DE) from 2,207 hectares (ha) authorised under MS 1111 to 2,791 ha (33 ha reduction of the referred DE)
- overall increase in vegetation clearing extent from 350 ha to 567 ha (an additional 217 ha comprised of 158 ha of native vegetation [State Forest] and 59 ha of previous mine disturbance and rehabilitated areas)
- change in physical elements of the proposal to:
  - modify the Austins and Southampton dams design to implement an upstream dam raise rather than downstream dam raises (11.75 ha reduction in DE and ~3 ha reduction in footprint)
  - excise the Greenbushes Pioneer Cemetery from the DE (4 ha reduction)
  - include the Greenbushes Mine Lookout into the DE (0.25 ha increase)
  - include additional previously cleared and rehabilitated areas associated with the Mine Services Area (31 ha)
  - re-design the Salt Water Gully Dam and reduce the dam expansion footprint (9 ha reduction)
  - excise a buffer to Hestor Brook from the DE to maintain a 50 metre (m) buffer along the length of Hestor Brook (17.5 ha reduction in DE)

- re-design the rehabilitation material stockpiles (RMS) footprint (2 ha increase)
- re-design the waste rock landforms (WRLs) S2 and S8, including the removal of the proposal element Mixed Use Area to integrate the area into the S2 footprint (no change in overall disturbance)
- remove the referred laydown area east of Salt Water Gully Dam (removed with the heritage buffer)
- increase the total area for operational element WRL Construction by 63 ha (from 727 ha to 790 ha)
- administrative changes to clearly define the proposal elements and correct an error in the proposal content document to align the referred area of the DE with the referred spatial data (2,826 ha corrected to 2,824 ha).

The amended DE and footprint extents are determined in the spatial data provided and align with the figures in the amended proposal content document.

The amended proposal content document and figures are provided in Attachment 1.

#### **SUMMARY OF REASONS:**

- The amendments to the proposal are mainly due to outcomes from stakeholder engagement, additional surveys completed and associated mine project re-design to minimise the environmental impacts of the implementation of the proposal.
- The amendments to the proposal seek to avoid and minimise impact to identified environmental factors Flora and Vegetation, Terrestrial Fauna, Inland Waters and Social Surroundings.
- The amended proposal will result in changes in direct and indirect impacts to flora and vegetation, terrestrial and aquatic fauna habitats, riparian vegetation, water quality and heritage values. The impacts are unlikely to be significantly different from that of the original proposal.
- Based on the information submitted there is predicted to be:
  - 30 ha increase in total clearing of previous mine disturbance and rehabilitated areas
  - 2 ha increase of disturbance in plantation areas
  - 4 ha reduction in native vegetation clearing
  - reduction of impact to *Acacia semitrullata* (P4) individual plants (from 25 individual plants to 1 individual plant)
  - avoidance of a wetland area of high community value
  - avoidance of one known nesting tree used by Black Cockatoos (from 1 known nesting tree to 0 known nesting trees)

- reduced impact to water quality through the re-design of the Salt Water Gully Dam and exclusion from the process water circuit
  - avoidance of potential impact to European Heritage through the removal of the cemetery from the DE
  - avoidance of impact to Aboriginal Heritage and reduced impact to riparian vegetation and fauna habitats (terrestrial and aquatic) through the removal of the buffer to Hester Brook from the DE.
- There are no new environmental factors likely to be significantly affected as a result of the amendments.
  - There are no additional EPA functions that need to be performed to assess the amended proposal as an eight-week public environmental review will take place following the submission of adequate additional information (including an environmental review document), which is required to include assessment of the changes outlined in the amendment.
  - The proposal would not, if already approved, be considered a significant amendment.
  - The amended proposal will be substantially the same character as the existing referred proposal.

**EFFECT OF THIS NOTICE:**

1. The assessment of the proposal is to be completed in respect of the proposal as amended in accordance with the decision set out in this notice.
2. The proposal as amended in accordance with this notice is taken to have been referred to the EPA under s. 38 of the EP Act.

**RIGHTS OF APPEAL:**

There are no rights of appeal under the EP Act in respect of this decision.



**Darren Walsh**  
**Delegate of the Environmental Protection Authority**  
CHAIR

16 December 2025

**Attachments:**

Attachment 1 - Amended proposal content document and figure/s showing the new approved proposal

**Attachment 1- Amended proposal content document and figure/s showing the new approved proposal**

# Template

## Proposal Content Document

**Table 1:** General proposal content description

<b>Proposal title</b>	Greenbushes Lithium Mine: Waste Rock Landforms, Salt Water Gully Dam and additional clearing for infrastructure.
<b>Proponent name</b>	Talison Lithium Australia Pty Ltd
<b>Short description</b>	Expansion of the existing Greenbushes lithium operations to incorporate the S2 WRL, S8 WRL, SWG Dam and additional mine infrastructure.

**Table 2: Proposal content elements**

Proposal element	Location/ description	Existing proposal extent, capacity or range	Referred proposal extent, capacity or range	Proposed amendments	Total proposal extent, capacity or range
Physical elements					
<p>Existing mine infrastructure, including:</p> <p>Waste rock landforms</p> <p>Water storage dams</p> <p>Open pits and haul roads</p> <p>Tailings storage facilities</p> <p>Ore stockpiles and ROM pad</p> <p>Crushing and processing plants</p> <p>Linear infrastructure corridors (mine access road, powerline, pipeline and road corridors).</p> <p>Explosives storage and handling infrastructure</p> <p>Workers' Village</p>	<p>Figures 1-1, 1-2, 1-3 and 1-4.</p>	<p>Clearing of no more than 350ha of native vegetation within a development envelope of 1,989 ha.</p>	<p>Clearing of no more than 512 ha of native vegetation and up to 29 ha of previous mine disturbance and rehabilitated areas within a DE of 2,826 ha</p>	<p>The originally referred DE has been corrected to 2,824 ha to align with the spatial data provided at referral.</p> <p>There is a reduction in clearing of native vegetation of 4 ha. The amendment results in:</p> <ul style="list-style-type: none"> <li>• A decrease of previous mine disturbance and rehabilitation areas to be cleared to 28 ha.</li> <li>• A reduction of 33 ha in the overall DE</li> </ul>	<p>Clearing of no more than 508 ha of native vegetation and up to 59 ha of previous mine disturbance and rehabilitated areas within a DE of 2,791ha.</p>

Proposal element	Location/ description	Existing proposal extent, capacity or range	Referred proposal extent, capacity or range	Proposed amendments	Total proposal extent, capacity or range
Mine services area (existing mine infrastructure)	Figure 1-5 and 1-6.			Talison is increasing the clearing of previous mine disturbance and rehabilitation areas that relate to the MSA to ensure that MS1111 accurately captures all land clearing already completed, as well as future clearing required for the proposed expansion. This includes an increase of 31 ha in areas of previously disturbed by mining and rehabilitation activities	
Waste rock landforms (S2 & S8)	Figure1-7.			<p>The reduced size of SWG Dam enables a small increase in the footprint of the S8 WRL. S2 increases due to the removal of the mixed use area element. Changes to footprint include</p> <ul style="list-style-type: none"> <li>• S2 WRL increases by 60.5 ha</li> </ul>	

Proposal element	Location/ description	Existing proposal extent, capacity or range	Referred proposal extent, capacity or range	Proposed amendments	Total proposal extent, capacity or range
				<ul style="list-style-type: none"> <li>S8 WRL increases by 2 ha</li> <li>No change to overall disturbance footprint for this element</li> </ul>	
Saltwater gully dam	Figure 1-8.			Reduction of dam area to avoid heritage identified by Wagyl Kaip survey in November 2025. Reduction of 3 ha of native vegetation clearing and reduction 4 ha of previous mine disturbance and rehabilitation areas	
Southampton and Austins dams	Figures 1-3 and 1-9.			<p>2 ha reduction in clearing of native vegetation and 1 ha reduction in clearing of previously rehabilitated areas.</p> <p>Dam raise clearing reduces by 3 ha in total.</p> <p>11.75 ha reduction to the DE.</p>	

Proposal element	Location/ description	Existing proposal extent, capacity or range	Referred proposal extent, capacity or range	Proposed amendments	Total proposal extent, capacity or range
Water management infrastructure	Figure 1-4.			No change to footprint.	
Supporting infrastructure corridors	Figure 1-4.			No change to footprint.	
CGP4 Infrastructure	Figure 1-4.			No change to footprint. Reference to workshops and laydown have been removed. The overall disturbance footprint remains unchanged.	
Rehabilitation material stockpile (RMS) area	Figures 1-4 and 1-10.			1 ha increase in the clearing of native vegetation. Note: This figure excludes the clearing of plantation associated with the expansion of the RMS area.	
Mixed use area	N/A			Removal of this proposal element as it will be part of the S2 WRL. No change to clearing disturbance	
Cemetery	Figure 1-2 and 1-3.			4 ha reduction DE to excise the cemetery	

Proposal element	Location/ description	Existing proposal extent, capacity or range	Referred proposal extent, capacity or range	Proposed amendments	Total proposal extent, capacity or range
Mine lookout	Figure 1-2 and 1-3.			0.25 ha increase to DE to include lookout, no additional clearing required.	
Hester Brook buffer	Figure 1-3.			17.5 ha reduction in DE to maintain a 50m buffer along the length of Hester Brook registered heritage site	
<b>Operational Elements</b>					
Damming and abstraction of surface water for mine site water supply.	Figures 1-1, 1-2, 1-4 and 1-8.	N/A	Abstraction of up to 1 GL/a from Saltwater Gully Dam.	No change.	Abstraction of up to 1 GL/a from Saltwater Gully Dam.
Waste Rock Landform Construction		Waste Rock Landform height of 330 m AHD and area of 355 ha.	WRL height of 330 m AHD and area of 727 ha (includes existing Floyds WRL, S2 WRL and S8 WRL).	Increase of WRL footprint by 63 ha, including removal of mixed use element and larger S8 footprint	WRL height of 330 m AHD and area of 790 ha (includes existing Floyds WRL, S2 WRL and S8 WRL).
Processing Throughput		Processing capacity up to 9.5 Mtpa ore.	Processing capacity of 9.5 Mtpa ore and up to 2.1 Mtpa recovered tailings.	No Change	Processing capacity of 9.5 Mtpa ore and up to 2.1 Mtpa recovered tailings.
Tailings Deposition		Up to 9.5Mtpa	Up to 11.6 Mtpa	No Change	Up to 11.6 Mtpa

<b>Proposal elements with greenhouse gas emissions</b>		
Operation elements: Peak annual average		
Scope 1	Maximum Capacity annual GHG Emissions for 2028: 193,075 tCO2-e	
Scope 2	Maximum Capacity annual Electricity use: 62,060 tCO2-e	
Scope 3	Peak emissions (expected) 2040: 1,719,106 tCO2-e	
Operation elements: Annual average life of mine		
Scope 1	Fuel and Land Clearing: 166,382 tCO2-e per year.	
Scope 2	Electricity use: 60,134 tCO2-e per year.	
Scope 3	Battery manufacture: 1,423,928 tCO2-e per year.	
<b>Total (based on annual average Scope 1 and Scope 2) – 25-year life of mine</b>		
<b>Existing Operation</b>	<b>Proposal</b>	<b>Combined Total</b>
5,368,852 tCO2-e of Scope 1 and Scope 2 emissions over the life of mine.	Increase in Scope 1 and Scope 2 emissions by 520,549 tCO2-e over the life of mine.	5,889,401 tCO2-e of Scope 1 and Scope 2 emissions over the life of mine.

<b>Rehabilitation and Closure</b>
Progressive rehabilitation will be undertaken over the life of mine. Areas disturbed through implementation of this proposal will be designed to be safe and non-polluting at all stages of

construction, and final landform design will promote establishment of native vegetation to support conservation significant species.

<b>Other elements which affect extent of effects on the environment</b>		
Proposal Time*	Maximum project life	To 2049
	Construction phase	~1 Year
	Operations phase	~21 Years
	Decommissioning phase	~2 Years

\* Proponents should only provide realistic timeframes to avoid unnecessary change to proposal applications at referral (section 38C), assessment (section 43A) or post assessment (section 45C).

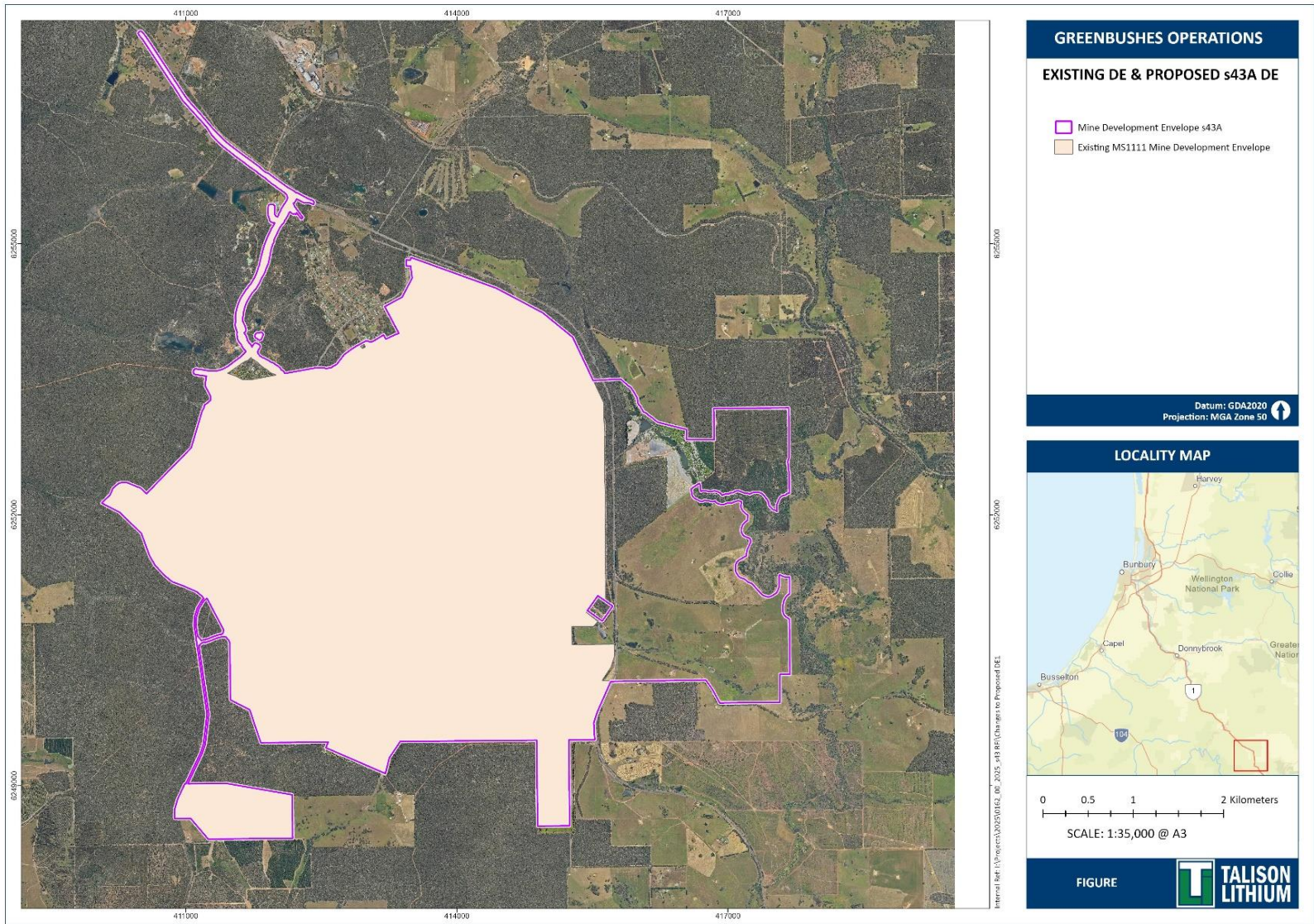


Figure 1-1: Existing and Proposed MDE

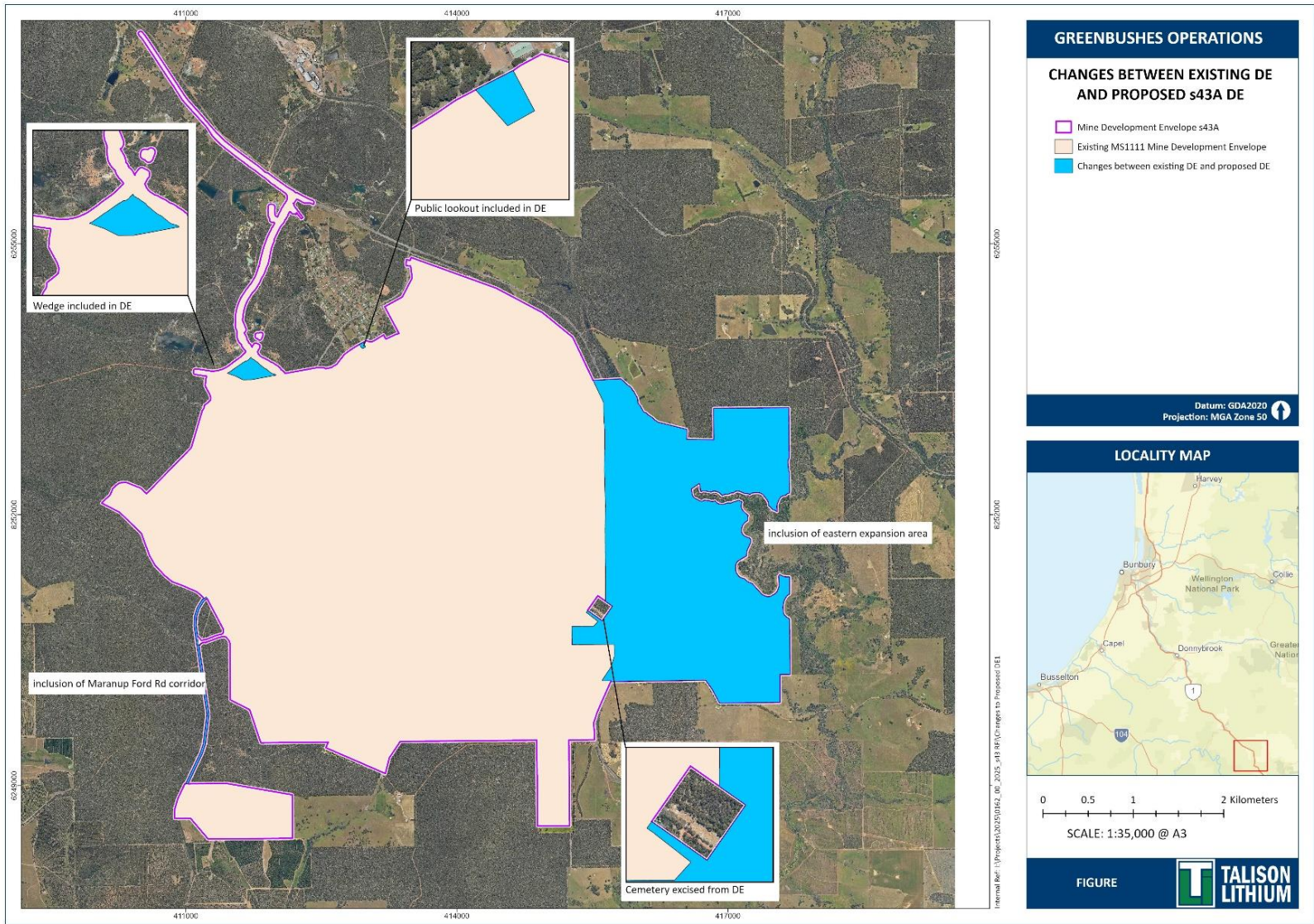


Figure 1-2: Changes between existing DE and Proposed s43A DE

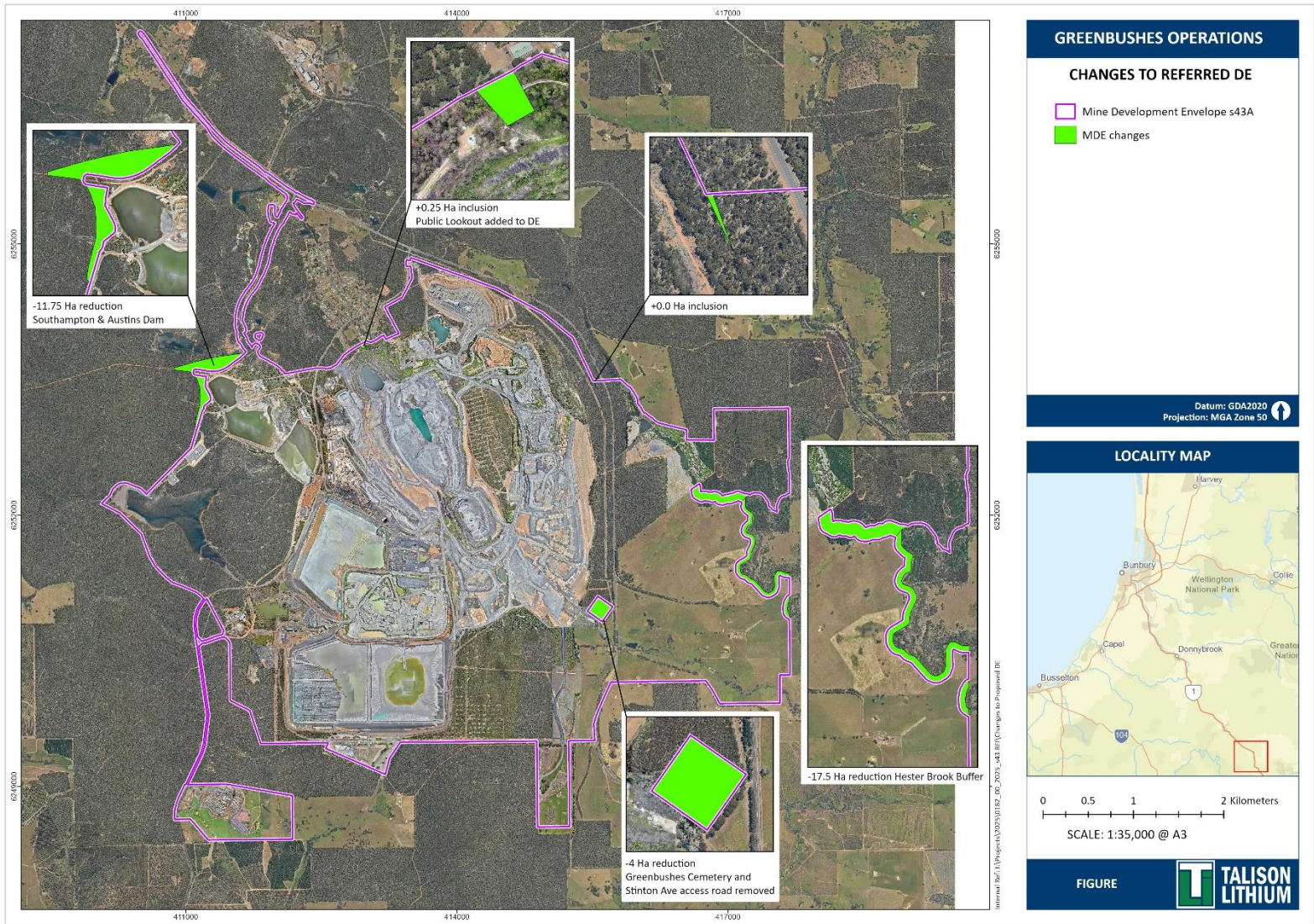


Figure 1-3 Changes to referred DE

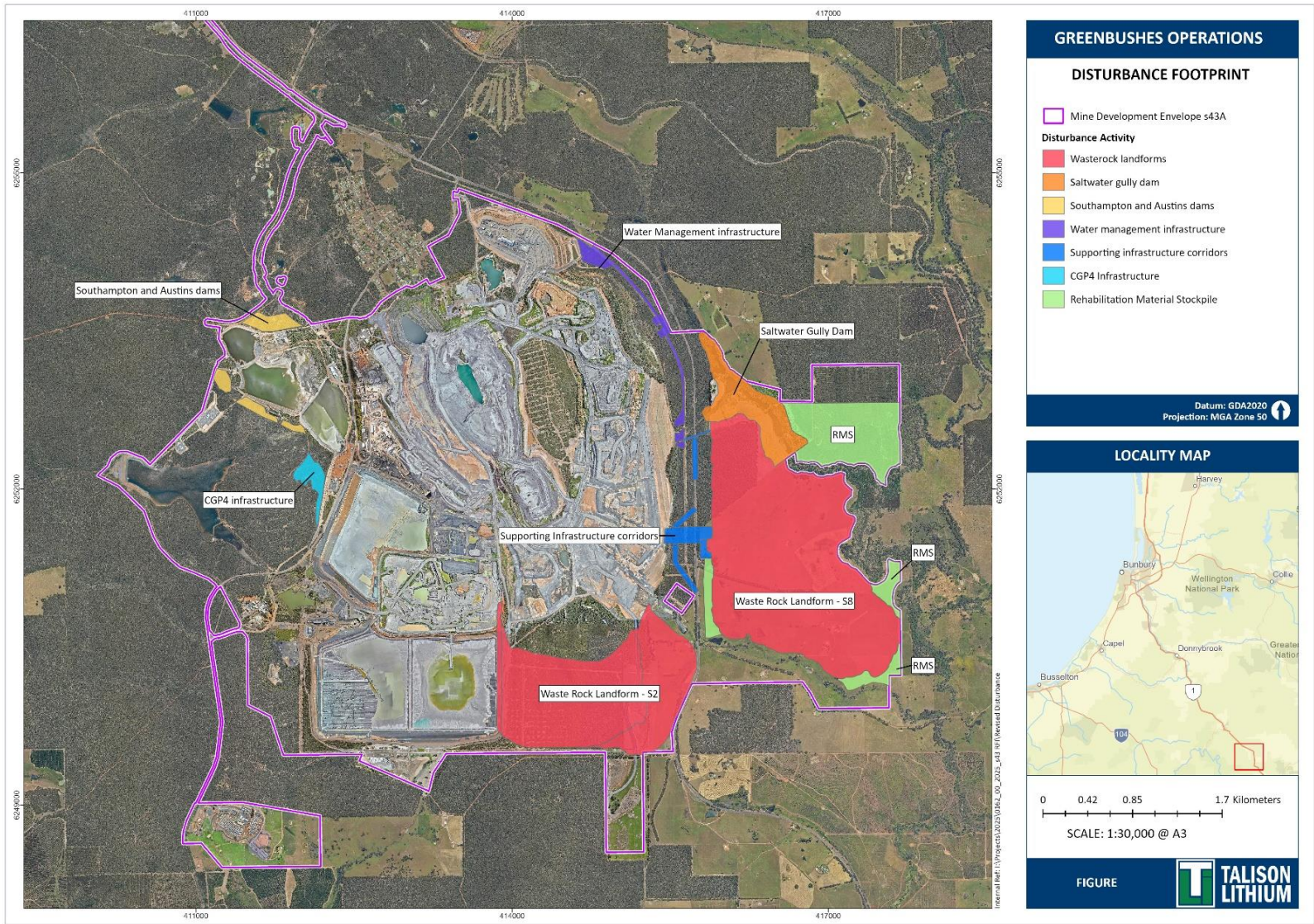


Figure 1-4: Proposed Disturbance Footprint

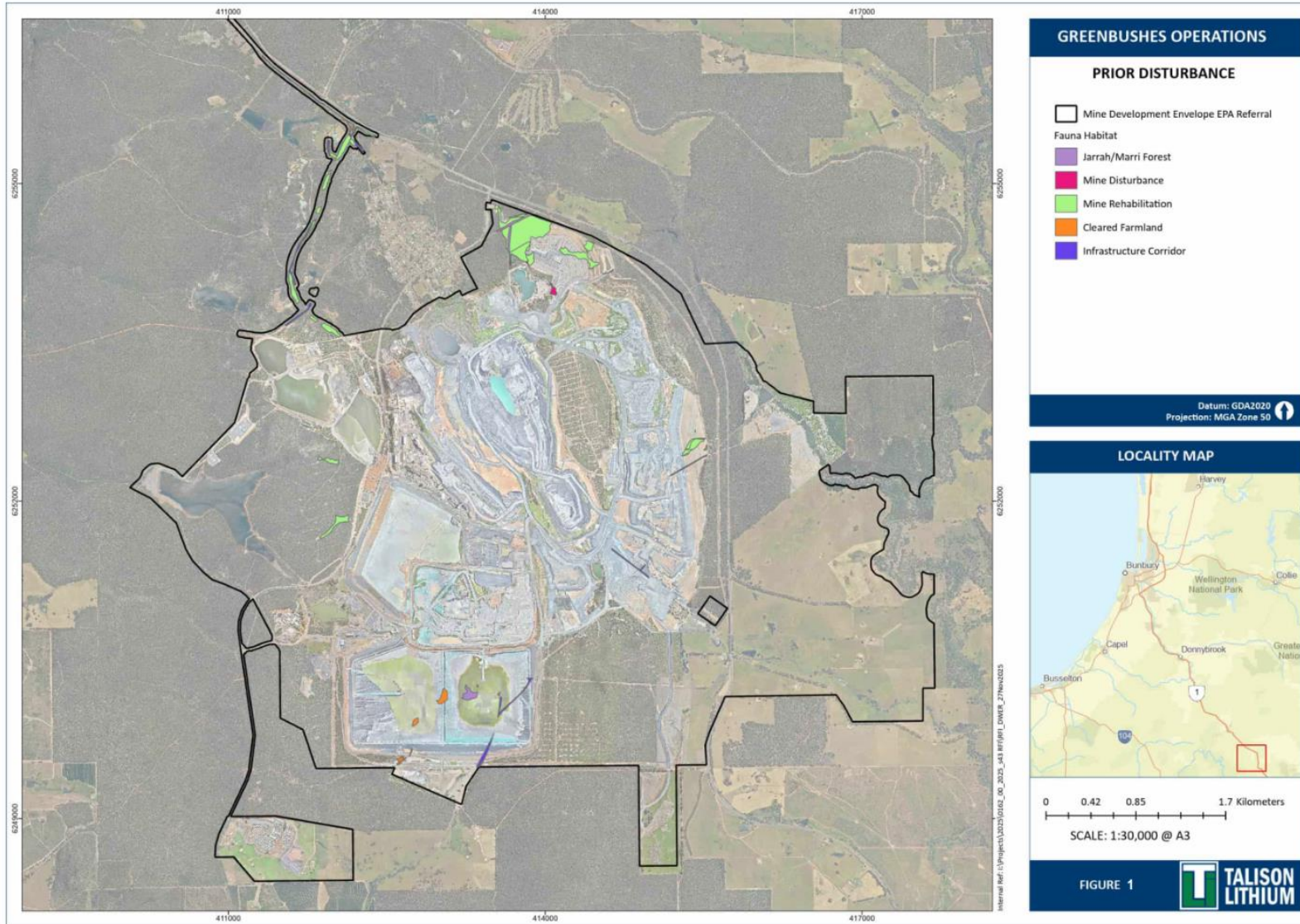


Figure 1-5: Prior disturbance of 31ha of Previous Mine Disturbance and Rehabilitation Areas

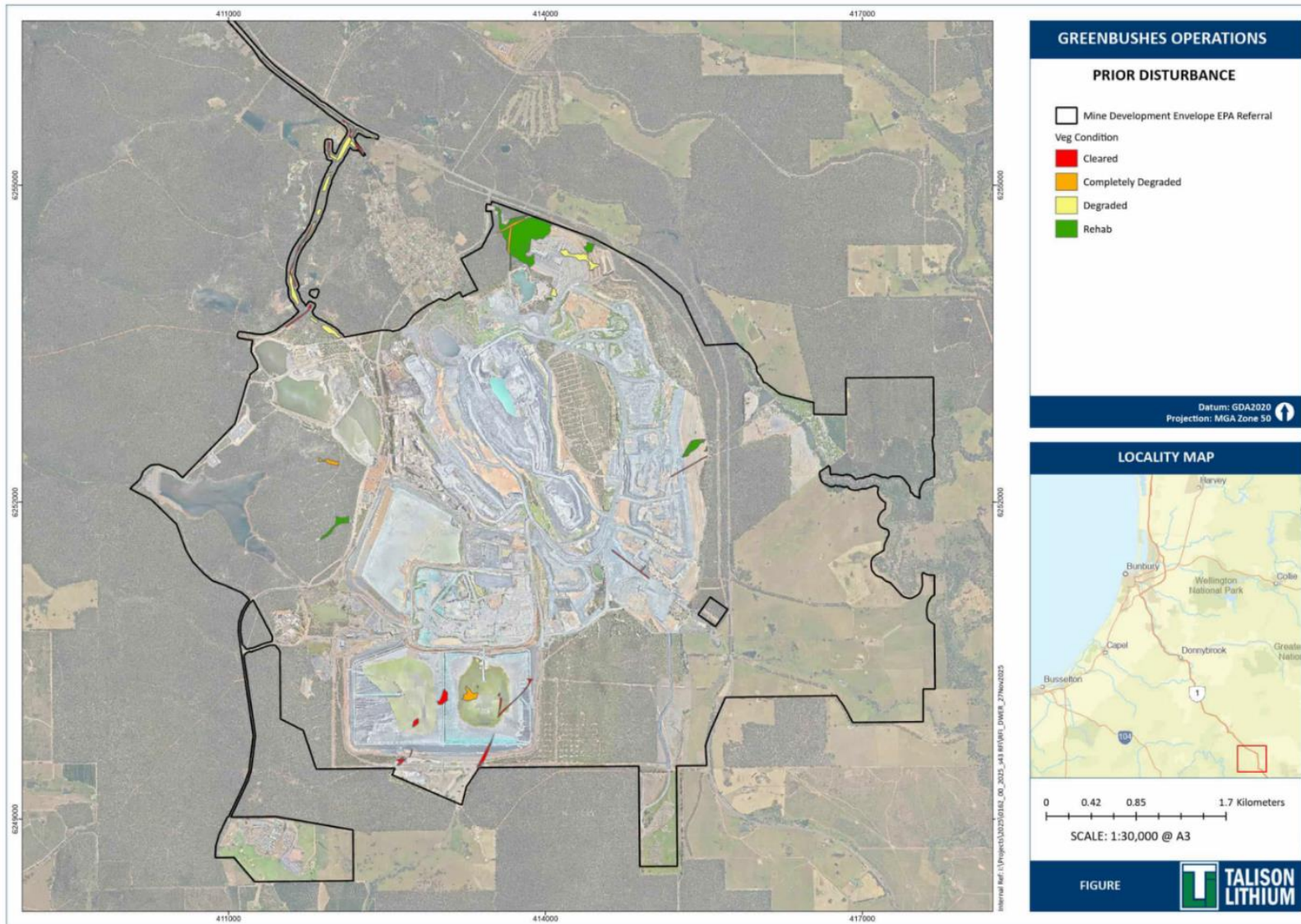


Figure 1-6: Vegetation condition of prior disturbed of 31ha of Previous Mine Disturbance and Rehabilitation Areas

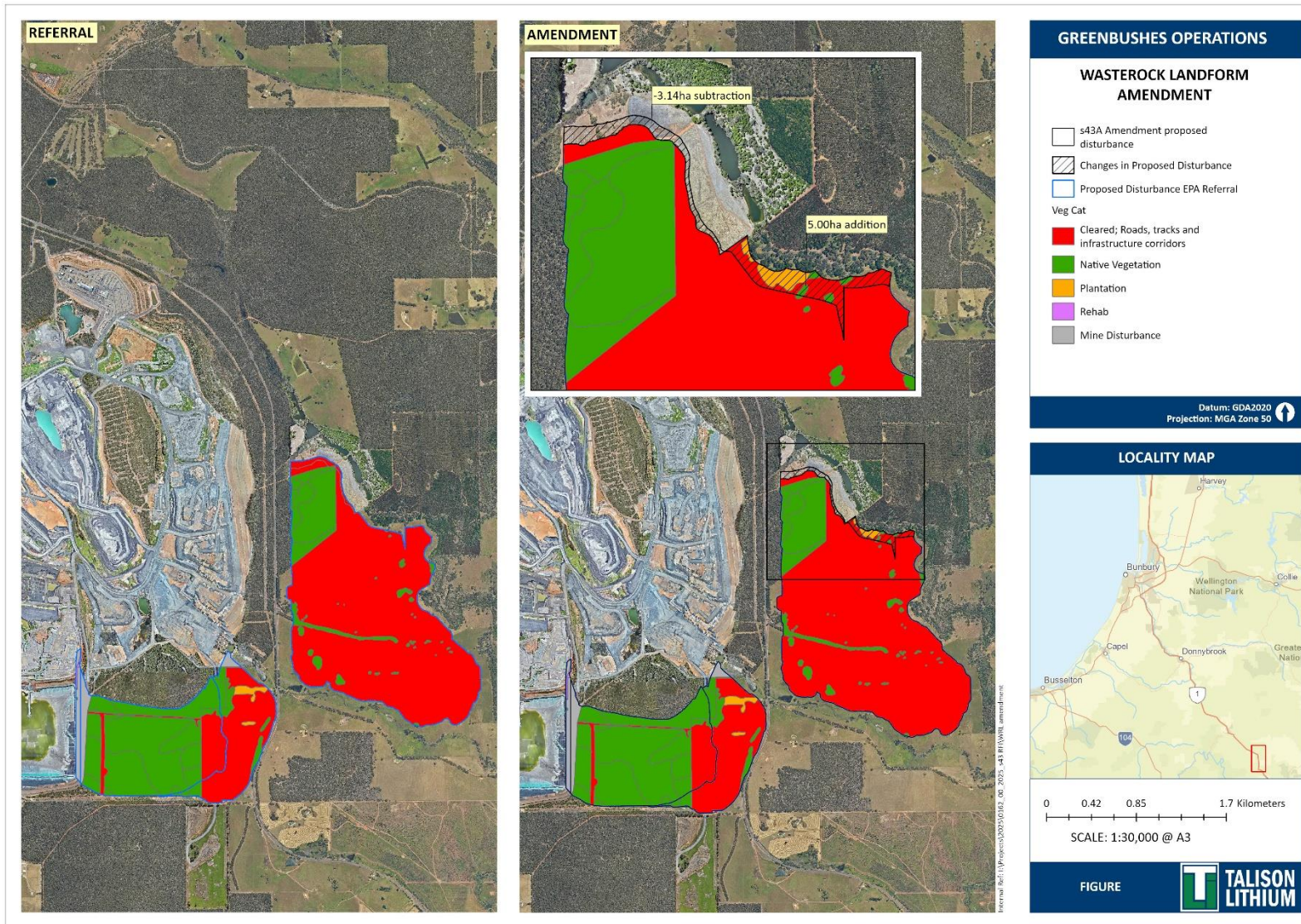


Figure 1-7: Proposed Changes to WRL S2 and S8

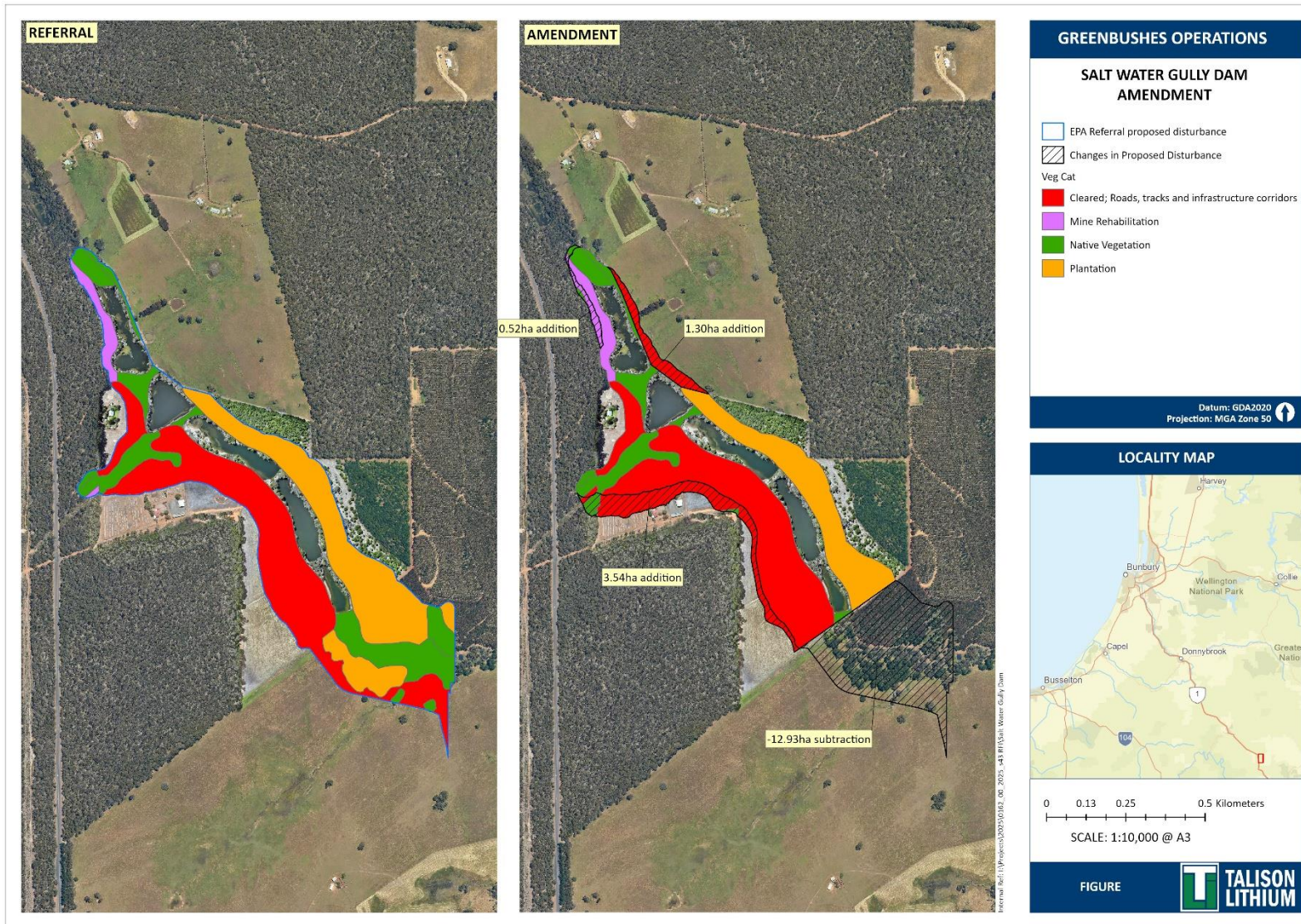


Figure 1-8: Salt Water Gully Dam Changes

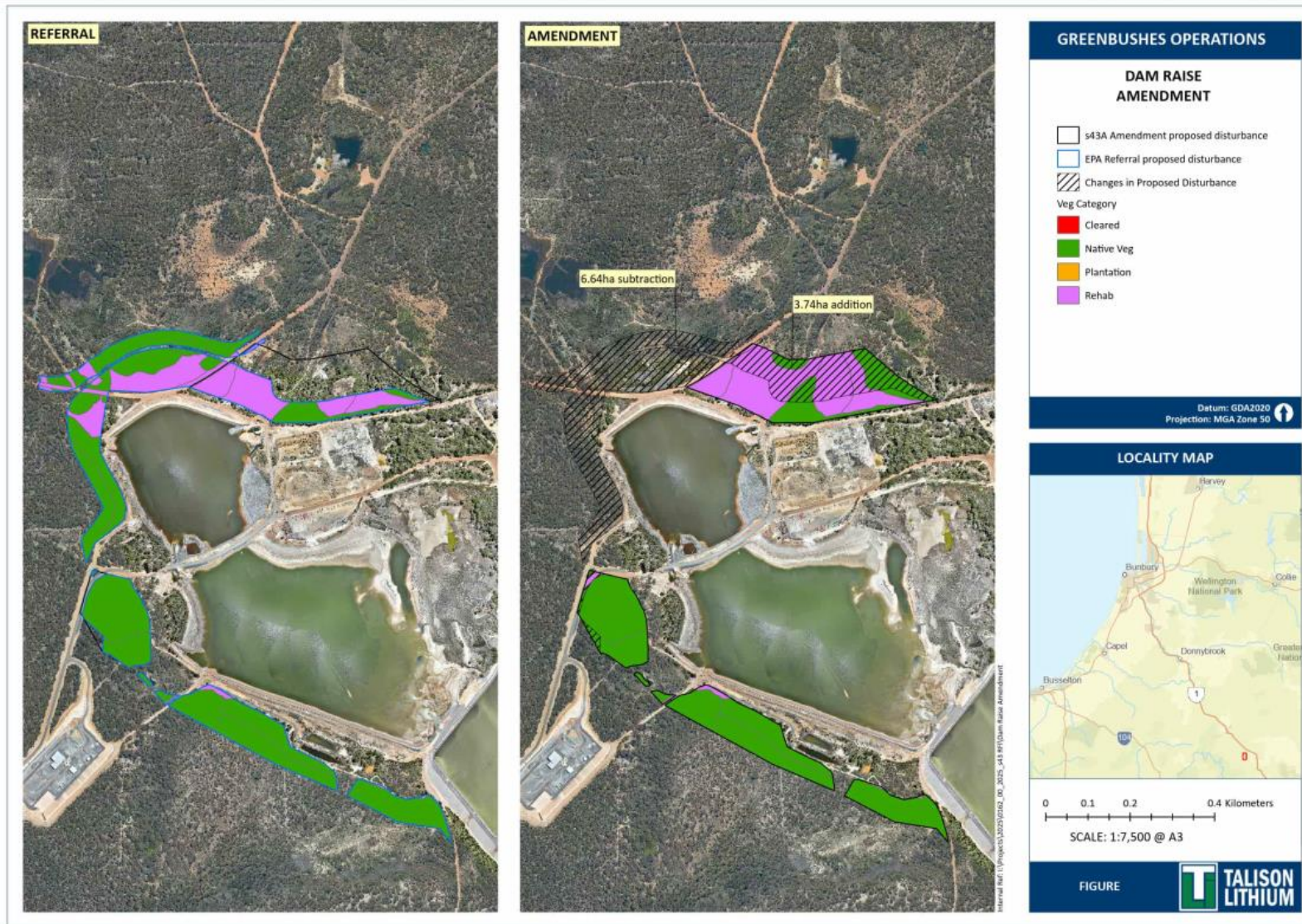


Figure 1-9: Dam Raise Amendment

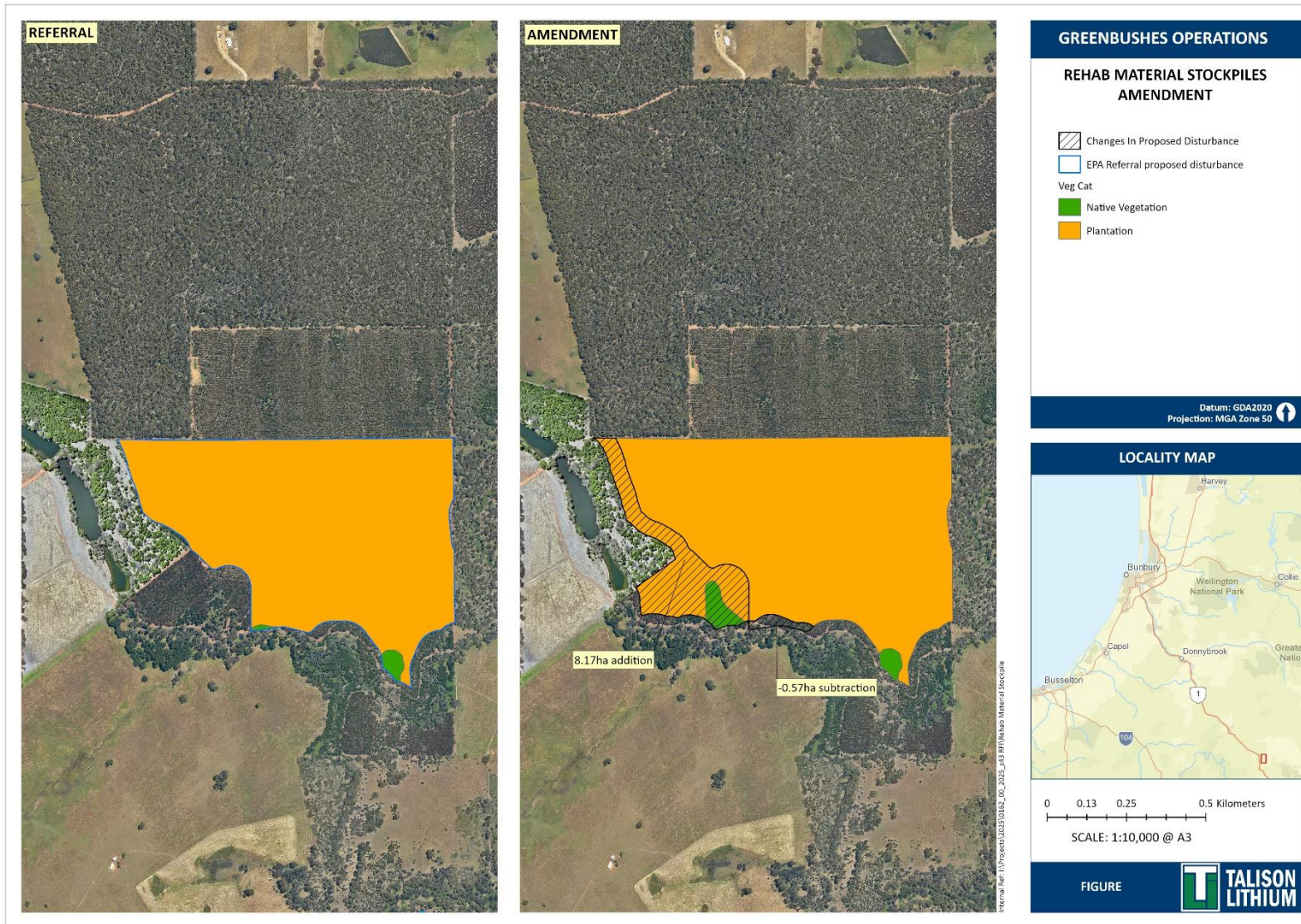


Figure 1-10 Rehab Material Stockpiles Amendment