

Environmental Protection Act 1986

Section 43A

**NOTICE OF DECISION TO CONSENT TO AMEND A REFERRED PROPOSAL
DURING ASSESSMENT**

PERSON TO WHOM THIS NOTICE IS GIVEN

(a) Alcoa of Australia Limited (ABN: 93 004 879 298)
576 Marmion Street
BOORAGOON WA 6154

PROPOSALS TO WHICH THIS NOTICE RELATES:

Bauxite Mining on the Darling Range in the southwest of WA for the years 2022 to 2026 - Assessment No. 2384

Bauxite Mining on the Darling Range in the southwest of WA for the years 2023 to 2027 Assessment No 2385

Pursuant to s. 43A of the *Environmental Protection Act 1986* (EP Act), the Environmental Protection Authority (EPA) gives approval to the assessment of the proposal being completed in respect of the proposal as amended in accordance with the proponent's request:

Assessment No. 2384

- The reduction in disturbance within the Willowdale Mine Development Envelope of approximately 330 hectares (ha), from the 397 ha originally proposed (67 ha of disturbance).
- The reduction in disturbance within the Huntly Mine Development Envelope of approximately 1270 ha, from the 1472 ha originally proposed (202 ha of disturbance).
- Removal of the entire 1753 ha Exploration Disturbance Envelope.
- Incorporation of the remaining disturbances within both the Willowdale and Huntly mine development envelopes into Assessment No. 2385.

Assessment No. 2385

- Incorporation of approximately 67 ha of disturbance at the Willowdale Mine Development Envelope from Assessment No. 2384.
- Incorporation of 202 ha of disturbance at the Huntly Mine Development Envelope from the Assessment No. 2384.
- Addition of up to 411 ha of new disturbance for haul roads within the Huntly Mine Development Envelope to avoid stream zone vegetation and heritage values.

- Reconciliation of data to amend errors and to remove any duplication and spatial data overlaps at the Huntly Mine Development Envelope.
- Reduction in the Exploration Disturbance Envelope by approximately 19,590 ha.
- Removal of exploration activities within the Reservoir Protection Zones (RPZ), other than for hydrogeological purposes which is proposed within 1-2 kilometres.
- Clarification of water use, being 1.095 GL/annum under existing Surface Water Licences, and a further 2.605 GL/annum to be obtained through a commercial arrangement with Water Corporation.
- Incorporation of estimated greenhouse gas emissions.

The amended proposal content document and figures are attached.

SUMMARY OF REASONS:

- Overall reduction of 933 ha resulting in a revised total disturbance of 13,788 ha within the Huntly Mine Development Envelope.
- Overall reduction of 330 ha resulting in a revised total disturbance of 846 ha within the Willowdale Mine Development Envelope.
- Overall reduction of 21,343 ha resulting in a revised Exploration Disturbance Envelope of 178,340 ha.
- The overall reduction in disturbance is likely to reduce impacts to flora and vegetation, terrestrial fauna, inland waters, terrestrial environmental quality and greenhouse gas emissions.
- There may be additional impacts to flora and vegetation values and terrestrial fauna values associated with the addition of the haul roads. However, the impacts are expected to be substantially the same character as the existing referred proposal.
- Greenhouse Gas (GHG) Emission estimates have been refined and provided for each mine region, so that they are consistent with the EPA's Revised Environmental Factor Guideline for GHG.
- There are no new environmental factors likely to be significantly affected as a result of the amendments, and no additional EPA functions need to be performed to assess the amended proposal.
- The amended proposal will be substantially the same character as the existing referred proposal.
- As a result of this change, Assessment No. 2384 will be terminated.

EFFECT OF THIS NOTICE:

1. The assessment of the proposal is to be completed in respect of the proposal as amended in accordance with the decision set out in this notice.

2. The proposal as amended in accordance with this notice is taken to have been referred to the EPA under s. 38 of the EP Act.

RIGHTS OF APPEAL:

There are no rights of appeal under the EP Act in respect of this decision.

A handwritten signature in black ink, appearing to read 'D Walsh', with a large loop at the end.

Mr Darren Walsh
Delegate of the Environmental Protection Authority
CHAIR

13 May 2025

Attachment 1- Amended proposal content document and figure/s showing the new approved proposal

Huntly and Willowdale MMP

Proposal Content Document

Table 1: General proposal content description

Proposal title	Huntly and Willowdale Mines Bauxite mining on the Darling Range 2023 to 2027 (third party referral)
Proponent name	Alcoa of Australia Limited (Alcoa)
Short description	Alcoa's mining operations (2022 to 2027) within the Huntly and Willowdale areas located in the Peel region of Western Australia (WA), approximately 100 km southeast of Perth

Table 2: Proposal content elements*

Proposal element	Location / description	Existing Proposal extent, capacity or range <i>(MS646 – 21 Sep 2015 & MS728 – 27 Sep 2016)</i>	Proposed Significant Amendment – Content of ERD	Combined extent, capacity, or range <i>(total of Existing Proposals + proposed changes)</i>
Physical elements				
Huntly Mine elements including: <ul style="list-style-type: none"> • Pits • Haul Roads • Topsoil stockpiles • Conveyors • Supporting infrastructure • Rehabilitation 	Figure 1	Clearing ¹ to occur within a 27,574 ha² Mine Development Envelope.	+13,788 ha Disturbance Footprint within a +39,047 ha Mine Development Envelope. Disturbance Footprint consists of: <ul style="list-style-type: none"> • +4,042 ha of disturbance³. • +6,044 ha of rehabilitation • +3,702 ha of open areas. 	22,478 ha Disturbance Footprint within a 66,621 ha Mine Development Envelope. Disturbance Footprint ⁴ consists of: <ul style="list-style-type: none"> • 5,054 ha of disturbance. • 13,385 ha of rehabilitation. • 4,039 ha of open areas.

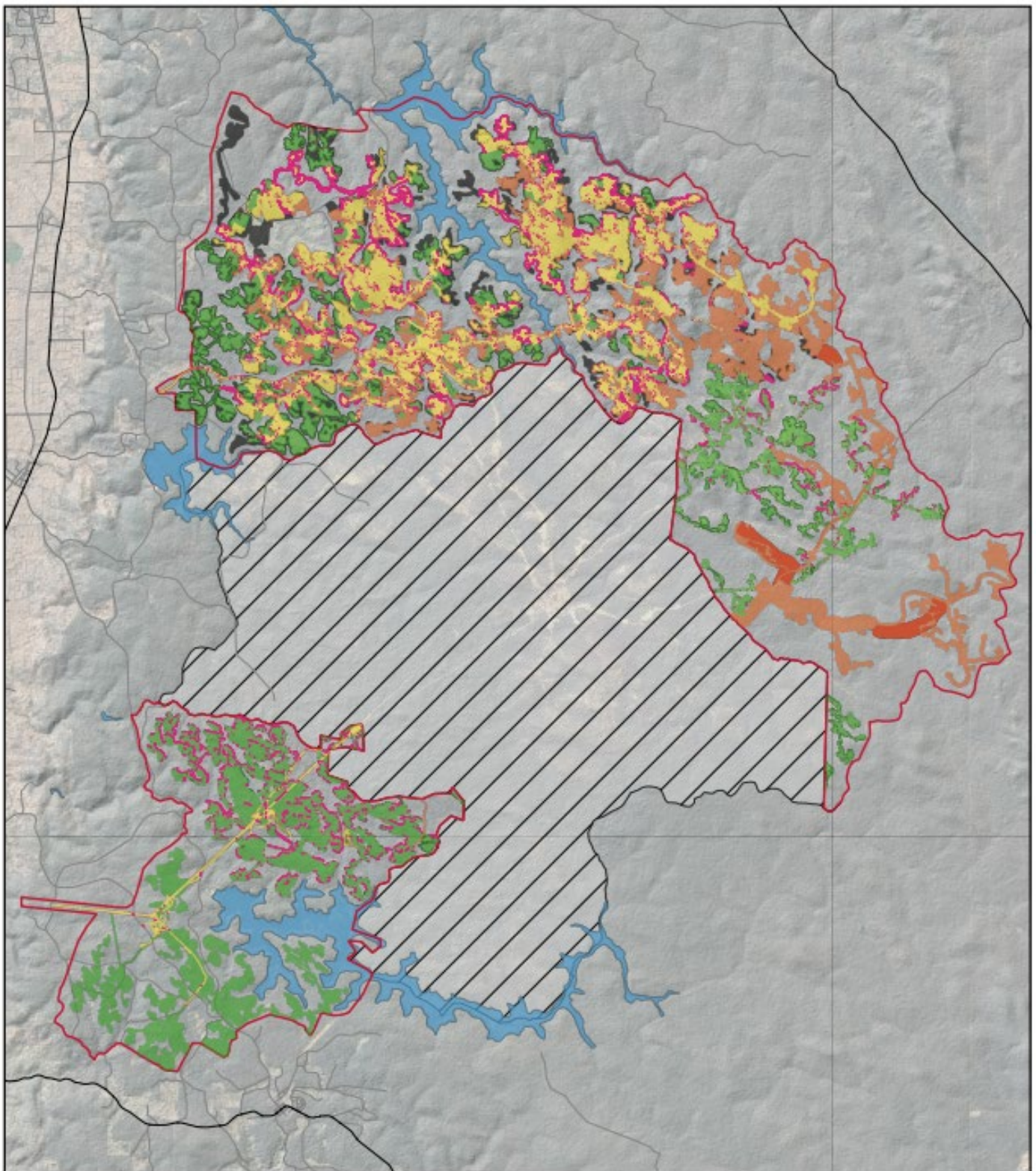
Proposal element	Location / description	Existing Proposal extent, capacity or range <i>(MS646 – 21 Sep 2015 & MS728 – 27 Sep 2016)</i>	Proposed Significant Amendment – Content of ERD	Combined extent, capacity, or range <i>(total of Existing Proposals + proposed changes)</i>
Willowdale Mine elements including: <ul style="list-style-type: none"> • Pits • Haul Roads • Topsoil stockpiles • Conveyors • Supporting infrastructure • Rehabilitation 	Figure 2	Clearing ⁵ to occur within a 25,012 ha² Mine Development Envelope.	+846 ha Disturbance Footprint within a 2,137 ha Mine Development Envelope. Disturbance Footprint consists of: <ul style="list-style-type: none"> • +77 ha of disturbance⁶. • +417 ha of rehabilitation • +352 ha of open areas. 	9,186 ha of Disturbance Footprint within a 27,149 ha Mine Development Envelope. Disturbance Footprint ⁷ consists of: <ul style="list-style-type: none"> • 2,357 ha of disturbance. • 5,157 ha of rehabilitation. • 1,672 ha of open areas.
Low impact exploration activities Development Envelope	Figure 3	Not defined ⁸ .	Low impact exploration activities to occur within a +178,340 ha Exploration Development Envelope and no more than 105,000 drill holes per annum	Low impact exploration activities to occur within a 178,340 ha Exploration Development Envelope and no more than 105,000 drill holes per annum
<ol style="list-style-type: none"> 1. <i>Ministerial Statement (MS) 646 (Huntly Mine) does not define the associated Disturbance Footprint. However, it currently includes 7,678 ha of disturbance (inclusive of rehabilitation) and 1,012 ha proposed disturbance footprint (inclusive of 29 ha previously approved clearing and not cleared under historical Forest Clearing Advice (FCA))</i> 2. <i>MS 646 (Huntly Mine) and MS728 (Willowdale Mine) does not define the associated Development Envelope, this area is based on the EPA's Section 38(G)7 Public Advice regarding the Bauxite mining on the Darling Range in the southwest of WA for the years 2022 to 2026 proposal (Assessment 2384) and Bauxite mining on the Darling Range in the southwest of WA for the years 2023 to 2027 proposal (Assessment 2385).</i> 3. <i>Includes 926 ha previously approved clearing and not cleared under historical FCA.</i> 4. <i>Existing Proposal Disturbance Footprint (7,678 ha of disturbance (inclusive of rehabilitation) and 1,012 ha proposed disturbance footprint) is administered and approved by the Bauxite Strategic Executive Committee (BSEC), therefore are out of scope of this PCD.</i> 5. <i>MS 728 (Willowdale Mine) does not define the associated Disturbance Footprint. However, it currently includes 6,060 ha of disturbance (inclusive of rehabilitation) and 2,280 ha proposed disturbance footprint (inclusive of 429 ha previously approved clearing and not cleared under historical FCA)</i> 6. <i>Includes 77 ha previously approved clearing and not cleared under historical FCA.</i> 7. <i>Existing Proposal Disturbance Footprint (6,060 ha of disturbance (inclusive of rehabilitation) and 2,280 ha proposed disturbance footprint) is administered and approved by the Bauxite Strategic Executive Committee (BSEC), therefore are out of scope of this PCD.</i> 8. <i>MS 646 (Huntly Mine) and MS 728 (Willowdale Mine) do not currently define the extent of exploration activities.</i> 				

Proposal element	Location / description	Existing Proposal extent, capacity or range <i>(MS646 – 21 Sep 2015 & MS728 – 27 Sep 2016)</i>	Proposed Significant Amendment – Content of ERD	Combined extent, capacity, or range <i>(total of Existing Proposals + proposed changes)</i>
Operational elements				
Bauxite production	Huntly Mine	Not defined ⁹	Production of up to +26.5 Mtpa (wet) of bauxite ore	Production of up to 26.5 Mtpa (wet) of bauxite ore
	Willowdale Mine	Production of up to 16 Mtpa of bauxite ore	Production of up to 16 Mtpa (wet) of bauxite ore	Production of up to 16 Mtpa (wet) of bauxite ore
Water abstraction	Huntly Mine	Not defined	Abstraction of 1.095 GL/annum ¹⁰	Abstraction of 1.095 GL/annum ¹⁰
Bauxite Crushing	Huntly Mine	Not defined	Processing of up to +26.5 Mtpa (wet) of bauxite ore	Processing of up to 26.5 Mtpa (wet) of bauxite ore
	Willowdale Mine	Not defined	Processing of up to 16 Mtpa (wet) of bauxite ore	Processing of up to 16 Mtpa (wet) of bauxite ore
Bauxite conveying and transport	Huntly Mine	Not defined	Transport of up to +26.5 Mtpa (wet) of bauxite ore	Transport of up to 26.5 Mtpa (wet) of bauxite ore
	Willowdale Mine	Not defined	Transport of up to 16 Mtpa (wet) of bauxite ore	Transport of up to 16 Mtpa (wet) of bauxite ore
<p>9 – Production of up to 22.6 Mtpa bauxite ore removed as regulated under the Mining Act 1978 through a Change to Proposal approved under Section 45C EP Act on 21 September 2015</p> <p>10 – Alcoa holds five Rights in Water and Irrigation Act 1914 5C Surface Water Licences (SWL) authorising the abstraction of 1.095 GL/annum. The predicted water demand for the Proposal is 3.7 GL/annum. The additional supply is proposed to be obtained through further commercial agreements with Water Corporation.</p>				

Proposal element	Location / description	Existing Proposal extent, capacity or range <i>(MS646 – 21 Sep 2015 & MS728 – 27 Sep 2016)</i>	Proposed Significant Amendment – Content of ERD	Combined extent, capacity, or range <i>(total of Existing Proposals + proposed changes)</i>
Greenhouse Gas Emissions				
Peak annual average				
Scope 1	Huntly Mine	Not defined	124,900 t CO ₂ e peak annual gross emissions. ≤ 100,000 t CO ₂ e annual net emissions as managed by the Safeguard Mechanism ¹² .	124,900 t CO ₂ e peak annual gross emissions. <100,000 t CO ₂ e annual net emissions as managed by the Safeguard Mechanism ¹² .
			1,827,798 t CO ₂ e cumulative non-NGERs related gross emissions at 2050 (initial estimate) ¹³	1,827,798 t CO ₂ e cumulative non-NGERs related gross emissions at 2050 (initial estimate) ¹³
	Willowdale Mine		48,900 t CO ₂ e peak annual gross emissions	48,900 t CO ₂ e peak annual gross emissions
			1,175,443 t CO ₂ e cumulative non-NGERs related gross emissions at 2050 (initial estimate) ¹³	1,175,443 t CO ₂ e cumulative non-NGERs related gross emissions at 2050 (initial estimate) ¹³
Scope 2	Huntly Mine	Not defined	65,495 t CO ₂ e peak annual emissions	65,495 t CO ₂ e peak annual emissions
	Willowdale Mine		13,973 t CO ₂ e peak annual emissions	13,973 t CO ₂ e peak annual emissions
Scope 3	Huntly Mine	Not defined	Approximately 44.9 MtCO ₂ e per year ¹⁴	Approximately 44.9 MtCO ₂ e per year ¹⁴
	Willowdale Mine		Approximately 20.8 MtCO ₂ e per year ¹⁴	Approximately 20.8 MtCO ₂ e per year ¹⁴

Proposal element	Location / description	Existing Proposal extent, capacity or range (MS646 – 21 Sep 2015 & MS728 – 27 Sep 2016)	Proposed Significant Amendment – Content of ERD	Combined extent, capacity, or range (total of Existing Proposals + proposed changes)
<p>11 - Peak emissions subject to date of approval decision and finalisation of mine plan.</p> <p>12 - Net emissions arise following the application of any Safeguard Mechanism credit units/carbon offsets as required by the SGM</p> <p>13 - Non-NGERs reported Scope 1 emissions are those not covered by the National Greenhouse and Energy Reporting Act 2007, and in this instance relate to the potential release of carbon stored in the forest ecosystem. These matters are addressed in the ERD for Assessment 2253.</p> <p>14 - Peak annual Scope 3 emissions for year with forecast highest production during the Proposal. Scope 3 emissions related to downstream smelting are calculated using the 2022 International Aluminium Institute average. Scope 3 emissions for the categories and sources included in the calculation are consistent with the International Aluminium Institute's (IAI) cradle-to-gate primary aluminium life cycle assessment.</p>				
Rehabilitation				
<p>All clearing within the Development Envelope will be rehabilitated to Alcoa's rehabilitation objective to <i>Establish, and return to the State, a self-sustaining Jarrah Forest ecosystem, planned to enhance or maintain water, timber, recreation, conservation and other nominated forest values. Rehabilitated areas must become amenable to similar management practices employed in the surrounding Jarrah Forest</i>. This objective has been developed with, and approved by, the Department of Biodiversity, Conservation and Attractions and endorsed by the MMPLG as part of the 2016 onwards Completion Criteria.</p>				
Other elements which affect extent of effects on the environment				
Proposal time	Maximum project life – Huntly Mine	> 45 years	31 December 2027 for Proposed Disturbance Footprint and Exploration Development Envelope.	> 45 years
Proposal time	Maximum project life – Willowdale Mine	Not defined	31 December 2027 for Proposed Disturbance Footprint and Exploration Development Envelope.	31 December 2027 for Proposed Disturbance Footprint and Exploration Development Envelope.

* Proposed changes to Ministerial Statements are shown in **bold**. These proposed changes also include previously undefined elements within the Ministerial Statements.



Legend

- | | | |
|--|--|------------------|
| Huntly Mine Development Envelope | Proposed Disturbance (Assessment 2384) | Major Dams |
| Development Envelope - Previously Referred | Additional Proposed Disturbance (Assessment 2385 - s43A Amendment) | State Roads |
| Open Areas (Assessment 2384 & 2385) | Disturbance Removed (Assessment 2385 - s43A Amendment) | Local Roads |
| Rehabilitation (Assessment 2384 & 2385) | | Google Satellite |
| Proposed Disturbance (Assessment 2385) | | |

Assessment 2384 & 2385 - s43A Amendment

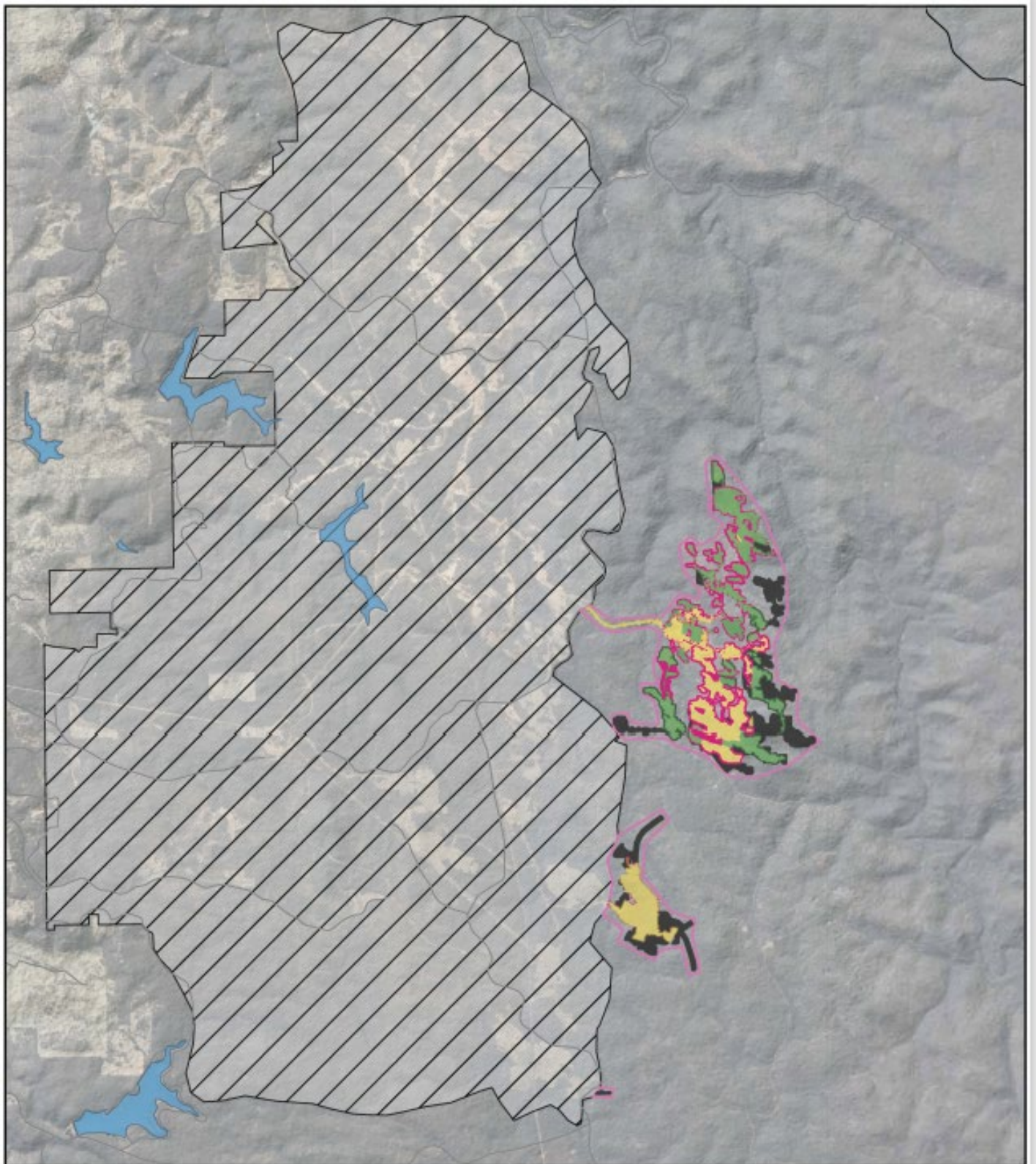
0 2.5 5 7.5 10 km



Figure 1: Huntly Mine Development Envelope

Scale: 1:170,000 at A4

Date: 24/02/2025



Legend

- | | | |
|--|--|------------------|
| Willowdale Mine Development Envelope | Proposed Disturbance (Assessment 2384) | State Roads |
| Development Envelope - Previously Referred | Disturbance Removed (Assessment 2385 - s43A Amendment) | Local Roads |
| Open Areas (Assessment 2384 & 2385) | Major Dams | Google Satellite |
| Rehabilitation (Assessment 2384 & 2385) | | |
| Proposed Disturbance (Assessment 2385) | | |

Assessment 2384 & 2385 - s43A Amendment

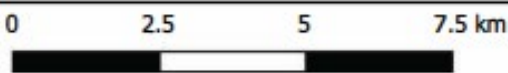
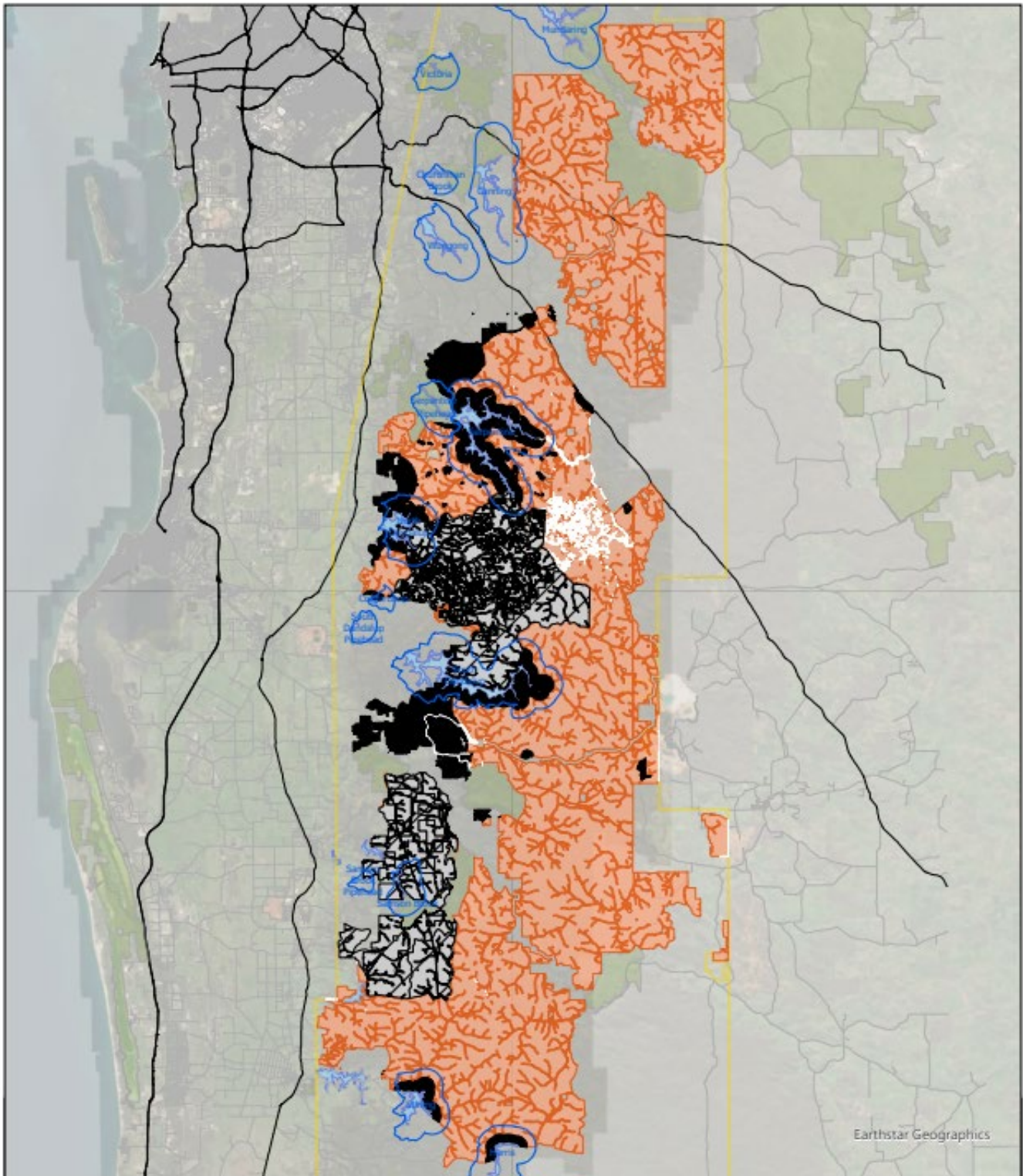


Figure 3: Willowdale Mine Development Envelope

Scale: 1:115,000 at A4

Date: 24/02/2025



Earthstar Geographics

Legend

- Exploration Development Envelope
- Exploration Development Envelope (Assessment 2384 - Area Removed)
- Exploration Development Envelope (Assessment 2385 - Area Removed)
- Exploration Development Envelope (Previously Referred)
- ML1SA
- Major Dams
- Reservoir Protection Zones (RPZ)
- National / Conservation Parks
- State Roads
- Local Roads

Assessment 2384 & 2385 - s43A Amendment	<p>Kilometres</p> <p>Scale: 1:505,309 at A4</p>		
Figure 4: Exploration Development Envelope	Date Printed: 5/04/2025		