

Environmental Protection Act 1986

Section 43A

NOTICE OF DECISION TO CONSENT TO AMEND A REFERRED PROPOSAL DURING ASSESSMENT

PERSON TO WHOM THIS NOTICE IS GIVEN

- (a) Alcoa of Australia Limited (ABN 93 004 879 298)
Level 2, 235 St Georges Terrace
PERTH WA 6000

PROPOSAL TO WHICH THIS NOTICE RELATES:

Bauxite Mining on the Darling Range in the southwest of WA for the years 2023 to 2027 - Assessment 2385.

Pursuant to s. 43A of the *Environmental Protection Act 1986* (EP Act), the Environmental Protection Authority (EPA) gives approval to the assessment of the proposal being completed in respect of the proposal as amended in accordance with the proponent's request:

- The reduction in the extent of the exploration development envelope (DE) from 178,340 hectares (ha) to 129,246 ha (49,094 ha reduction).

The amended proposal content document and figures are attached.

SUMMARY OF REASONS:

- The reduction in the Exploration DE is likely to reduce impacts to social surroundings, inland waters, flora and vegetation and terrestrial fauna.
- The reduction in the exploration DE is likely to reduce potential impacts on environmental and social values through increased separation from sensitive receptors and a reduced extent of exploration activities.
- Exploration previously undertaken within the exploration DE being removed near Dwellingup Townsite was prior to this becoming a significant proposal under the Pt IV of the EP Act. Additional exploration will not be undertaken in this area decreasing the likelihood of mining in the future.
- There are no new environmental factors likely to be significantly affected as a result of the amendment, and no additional EPA functions need to be performed to assess the amended proposal.

- The EPA considers the amended proposal to be substantially the same character as the existing referred proposal, and does not consider that the amendment would be a significant amendment if the proposal were already approved.

EFFECT OF THIS NOTICE:

1. The assessment of the proposal is to be completed in respect of the proposal as amended in accordance with the decision set out in this notice.
2. The proposal as amended in accordance with this notice is taken to have been referred to the EPA under s. 38 of the EP Act.

RIGHTS OF APPEAL:

There are no rights of appeal under the EP Act in respect of this decision.

A handwritten signature in black ink, appearing to read 'Darren Walsh', written in a cursive style.

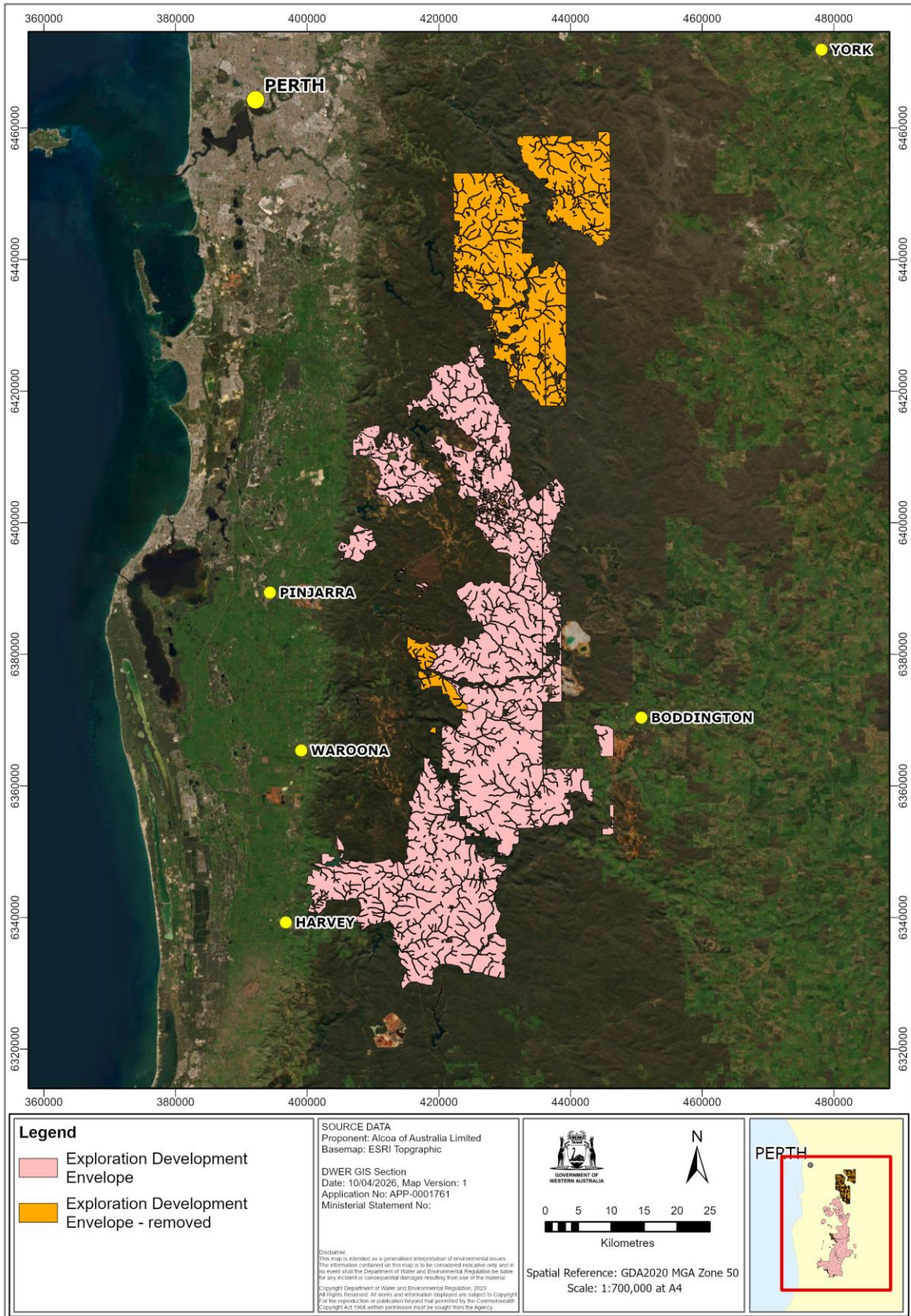
Darren Walsh
Delegate of the Environmental Protection Authority
CHAIR

13 April 2026

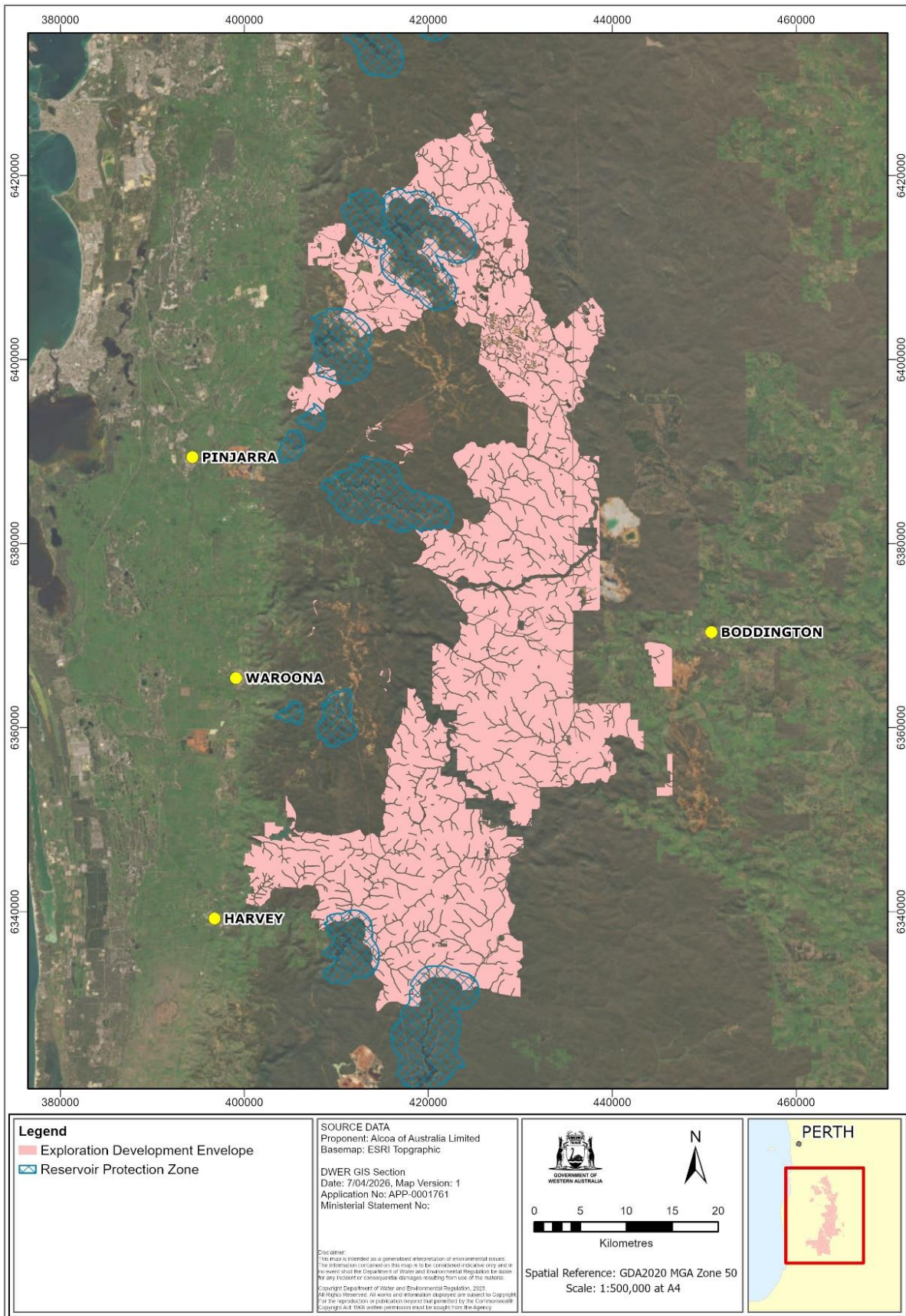
Attachments:

- Attachment 1 – Proposed amendment of the exploration development envelope under s43A
- Attachment 2 – Proposed exploration development envelope relative to reservoir protection zones
- Attachment 3 – Amended proposal content document and figure/s showing the new proposal boundaries for the exploration development envelope

Attachment 1 – Proposed amendment of the exploration development envelope under s43A



Attachment 2 - Proposed exploration development envelope relative to reservoir protection zones



Attachment 3 - Amended proposal content document

Huntly and Willowdale MMP

Proposal Content Document

Table 1: General proposal content description

Proposal title	Huntly and Willowdale Mines Bauxite mining on the Darling Range 2023 to 2027 (third party referral)
Proponent name	Alcoa of Australia Limited (Alcoa)
Short description	Alcoa's mining operations (2022 to 2027) within the Huntly and Willowdale areas located in the Peel region of Western Australia (WA), approximately 100 km southeast of Perth

Table 2: Proposal content elements*

Proposal element	Location / description	Approved Proposal Authorised Maximum extent, capacity or range <i>(MS646 – 21 Sep 2015 & MS728 – 27 Sep 2016)</i>	Significant Amendment to Approved Proposal	Combined maximum extent, capacity or range (Amended Proposal)
Physical elements				
Huntly Mine elements including: <ul style="list-style-type: none"> • Pits • Haul Roads • Topsoil stockpiles • Conveyors • Supporting infrastructure • Rehabilitation 	Figure 1	Clearing ¹ to occur within a 27,574 ha² Mine Development Envelope.	+13,788 ha Disturbance Footprint within a +39,047 ha Mine Development Envelope. Disturbance Footprint consists of: <ul style="list-style-type: none"> • +4,042 ha of disturbance³. • +6,044 ha of rehabilitation • +3,702 ha of open areas. 	22,478 ha Disturbance Footprint within a 66,621 ha Mine Development Envelope. Disturbance Footprint ⁴ consists of: <ul style="list-style-type: none"> • 5,054 ha of disturbance. • 13,385 ha of rehabilitation. • 4,039 ha of open areas.

Proposal element	Location / description	Approved Proposal Authorised Maximum extent, capacity or range <i>(MS646 – 21 Sep 2015 & MS728 – 27 Sep 2016)</i>	Significant Amendment to Approved Proposal	Combined maximum extent, capacity or range (Amended Proposal)
Willowdale Mine elements including: <ul style="list-style-type: none"> • Pits • Haul Roads • Topsoil stockpiles • Conveyors • Supporting infrastructure • Rehabilitation 	Figure 2	Clearing ⁵ to occur within a 25,012 ha² Mine Development Envelope.	+846 ha Disturbance Footprint within a 2,137 ha Mine Development Envelope. Disturbance Footprint consists of: <ul style="list-style-type: none"> • +77 ha of disturbance⁶. • +417 ha of rehabilitation • +352 ha of open areas. 	9,186 ha of Disturbance Footprint within a 27,149 ha Mine Development Envelope. Disturbance Footprint ⁷ consists of: <ul style="list-style-type: none"> • 2,357 ha of disturbance. • 5,157 ha of rehabilitation. • 1,672 ha of open areas.
Low impact exploration activities Development Envelope	Figure 3	Not defined ⁹ .	Low impact exploration activities to occur within a 129,246 ha Exploration Development Envelope and no more than 105,000 drill holes per annum ⁹	Low impact exploration activities to occur within a 129,246 ha Exploration Development Envelope and no more than 105,000 drill holes per annum ⁹
<ol style="list-style-type: none"> 1. Ministerial Statement (MS) 646 (Huntly Mine) does not define the associated Disturbance Footprint. However, it currently includes 7,678 ha of disturbance (inclusive of rehabilitation) and 1,012 ha proposed disturbance footprint (inclusive of 29 ha previously approved clearing and not cleared under historical Forest Clearing Advice (FCA)) 2. MS 646 (Huntly Mine) and MS 728 (Willowdale Mine) do not define the associated Development Envelopes, this area is based on the EPA's Section 38(G)7 Public Advice regarding the Bauxite mining on the Darling Range in the southwest of WA for the years 2022 to 2026 proposal (Assessment 2384) and Bauxite mining on the Darling Range in the southwest of WA for the years 2023 to 2027 proposal (Assessment 2385). 3. Includes 926 ha previously approved clearing and not cleared under historical FCA. 4. Existing Proposal Disturbance Footprint (7,678 ha of disturbance (inclusive of rehabilitation) and 1,012 ha proposed disturbance footprint) is approved by the Minister for State Development (in concurrence with the Minister for Environment and the Minister for Water) on advice from the Bauxite Strategic Executive Committee (BSEC). 5. MS 728 (Willowdale Mine) does not define the associated Disturbance Footprint. However, it currently includes 6,060 ha of disturbance (inclusive of rehabilitation) and 2,280 ha proposed disturbance footprint (inclusive of 429 ha previously approved clearing and not cleared under historical FCA) 6. Includes 77 ha previously approved clearing and not cleared under historical FCA. 7. Existing Proposal Disturbance Footprint (6,060 ha of disturbance (inclusive of rehabilitation) and 2,280 ha proposed disturbance footprint) approved by the Minister for State Development (in concurrence with the Minister for Environment and the Minister for Water) on advice from the BSEC. 8. MS 646 (Huntly Mine) and MS 728 (Willowdale Mine) do not currently define the extent of exploration activities. 9. The Exploration Development Envelope does not include areas within 1 kilometre of a reservoir's top water level within Reservoir Protection Zones (RPZ) and no exploration activities will occur within these areas. Within 1-2 				

Proposal element	Location / description	Approved Proposal Authorised Maximum extent, capacity or range (MS646 – 21 Sep 2015 & MS728 – 27 Sep 2016)	Significant Amendment to Approved Proposal	Combined maximum extent, capacity or range (Amended Proposal)
<i>kilometres of a reservoir's top water level within the RPZ, the only permitted exploration activity is for hydrogeological purposes.</i>				
Operational elements				
Bauxite production	Huntly Mine	Not defined ¹⁰	Production of up to +26.5 Mtpa (wet) of bauxite ore	Production of up to 26.5 Mtpa (wet) of bauxite ore
	Willowdale Mine	Production of up to 16 Mtpa of bauxite ore	Production of up to 16 Mtpa (wet) of bauxite ore	Production of up to 16 Mtpa (wet) of bauxite ore
Water abstraction	Huntly Mine	Not defined	Abstraction of 1.095 GL/annum¹¹	Abstraction of 1.095 GL/annum¹¹
Bauxite Crushing	Huntly Mine	Not defined	Processing of up to +26.5 Mtpa (wet) of bauxite ore	Processing of up to 26.5 Mtpa (wet) of bauxite ore
	Willowdale Mine	Not defined	Processing of up to 16 Mtpa (wet) of bauxite ore	Processing of up to 16 Mtpa (wet) of bauxite ore
Bauxite conveying and transport	Huntly Mine	Not defined	Transport of up to +26.5 Mtpa (wet) of bauxite ore	Transport of up to 26.5 Mtpa (wet) of bauxite ore
	Willowdale Mine	Not defined	Transport of up to 16 Mtpa (wet) of bauxite ore	Transport of up to 16 Mtpa (wet) of bauxite ore
<p><i>10 – Production of up to 22.6 Mtpa bauxite ore removed as regulated under the Mining Act 1978 through a Change to Proposal approved under Section 45C EP Act on 21 September 2015</i></p> <p><i>11 – Alcoa holds five Rights in Water and Irrigation Act 1914 5C Surface Water Licences (SWL) authorising the abstraction of 1.095 GL/annum. The predicted water demand for the Proposal is 3.7 GL/annum. The additional supply is proposed to be obtained through a third-party water supplier.</i></p>				

Proposal element	Location / description	Approved Proposal Authorised Maximum extent, capacity or range (MS646 – 21 Sep 2015 & MS728 – 27 Sep 2016)	Significant Amendment to Approved Proposal	Combined maximum extent, capacity or range (Amended Proposal)
Greenhouse Gas Emissions				
Peak annual average ¹²				
Scope 1	Huntly Mine	Not defined	124,900 t CO ₂ e peak annual gross emissions. ≤ 100,000 t CO ₂ e annual net emissions as managed by the Safeguard Mechanism ¹³ .	124,900 t CO ₂ e peak annual gross emissions. <100,000 t CO ₂ e annual net emissions as managed by the Safeguard Mechanism ¹³ .
			1,827,798 t CO ₂ e cumulative non-NGERs related gross emissions at 2050 (initial estimate) ¹⁴	1,827,798 t CO ₂ e cumulative non-NGERs related gross emissions at 2050 (initial estimate) ¹⁴
	Willowdale Mine		48,900 t CO ₂ e peak annual gross emissions	48,900 t CO ₂ e peak annual gross emissions
			1,175,443 t CO ₂ e cumulative non-NGERs related gross emissions at 2050 (initial estimate) ¹⁴	1,175,443 t CO ₂ e cumulative non-NGERs related gross emissions at 2050 (initial estimate) ¹⁴
Scope 2	Huntly Mine	Not defined	65,495 t CO ₂ e peak annual emissions	65,495 t CO ₂ e peak annual emissions
	Willowdale Mine		13,973 t CO ₂ e peak annual emissions	13,973 t CO ₂ e peak annual emissions
Scope 3	Huntly Mine	Not defined	Approximately 44.9 MtCO ₂ e per year ¹⁶	Approximately 44.9 MtCO ₂ e per year ¹⁶
	Willowdale Mine		Approximately 20.8 MtCO ₂ e per year ¹⁶	Approximately 20.8 MtCO ₂ e per year ¹⁶

Proposal element	Location / description	Approved Proposal Authorised Maximum extent, capacity or range (MS646 – 21 Sep 2015 & MS728 – 27 Sep 2016)	Significant Amendment to Approved Proposal	Combined maximum extent, capacity or range (Amended Proposal)
<p>12 - Peak emissions subject to date of approval decision and finalisation of mine plan.</p> <p>13 - Net emissions arise following the application of any Safeguard Mechanism credit units/carbon offsets as required by the SGM</p> <p>14 - Non-NGERs reported Scope 1 emissions are those not covered by the National Greenhouse and Energy Reporting Act 2007, and in this instance relate to the potential release of carbon stored in the forest ecosystem. These matters are addressed in the ERD for Assessment 2253.</p> <p>15 - Peak annual Scope 3 emissions for year with forecast highest production during the Proposal. Scope 3 emissions related to downstream smelting are calculated using the 2022 International Aluminium Institute average. Scope 3 emissions for the categories and sources included in the calculation are consistent with the International Aluminium Institute's (IAI) cradle-to-gate primary aluminium life cycle assessment.</p>				
Rehabilitation				
<p>All clearing within the Development Envelope will be rehabilitated to Alcoa's rehabilitation objective to establish, and return to the State, a self-sustaining Jarrah Forest ecosystem, planned to enhance or maintain water, timber, recreation, conservation and other nominated forest values. Rehabilitated areas must become amenable to similar management practices employed in the surrounding Jarrah Forest. This objective has been developed with, and approved by, the Department of Biodiversity, Conservation and Attractions and endorsed by the MMPLG as part of the 2016 onwards Completion Criteria.</p>				
Other elements which affect extent of effects on the environment				
Proposal time	Maximum project life – Huntly Mine	> 45 years	31 December 2027 for Proposed Disturbance Footprint and Exploration Development Envelope.	> 45 years
Proposal time	Maximum project life – Willowdale Mine	Not defined	31 December 2027 for Proposed Disturbance Footprint and Exploration Development Envelope.	31 December 2027 for Proposed Disturbance Footprint and Exploration Development Envelope.

* Proposed changes to Ministerial Statements are shown in **bold**. These proposed changes also include previously undefined elements within the Ministerial Statements.

Abbreviations

t CO_{2e} = tonnes of carbon dioxide equivalent

Ha = hectares

Tpa = tonnes per annum

Mtpa = million tonnes per annum

