

***Environmental Protection Act 1986***

**Section 43A**

**NOTICE OF DECISION TO CONSENT TO AMEND A REFERRED PROPOSAL  
DURING ASSESSMENT**

**PERSON TO WHOM THIS NOTICE IS GIVEN**

Mr Les Purves  
General Manager  
Environment, Communities and Land Access  
Polaris Metals Pty Ltd, subsidiary of Mineral Resources Limited (ACN: 085 223 570)  
1 Sleet Road  
APPLECROSS WA 6153

**PROPOSAL TO WHICH THIS NOTICE RELATES:**

Parker Range (Mt Caudan) Iron Ore Haul Road Revised Proposal  
Assessment No. 2297

Pursuant to s. 43A of the *Environmental Protection Act 1986* (EP Act), the Environmental Protection Authority (EPA) gives approval to the assessment of the proposal being completed in respect of the proposal as amended in accordance with the proponent's request:

- Change to the native vegetation clearing from 203 hectares (ha) to 173 ha (reduction of 30 ha).

The components of the original proposal as approved under Ministerial Statement 892 are to remain unchanged.

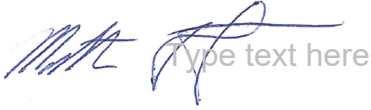
The amended proposal content document and figure are attached (Attachment 1).

**EFFECT OF THIS NOTICE:**

1. The assessment of the proposal is to be completed in respect of the proposal as amended in accordance with the decision set out in this notice.
2. The proposal as amended in accordance with this notice is taken to have been referred to the EPA under s. 38 of the EP Act.

**RIGHTS OF APPEAL:**

There are no rights of appeal under the EP Act in respect of this decision.



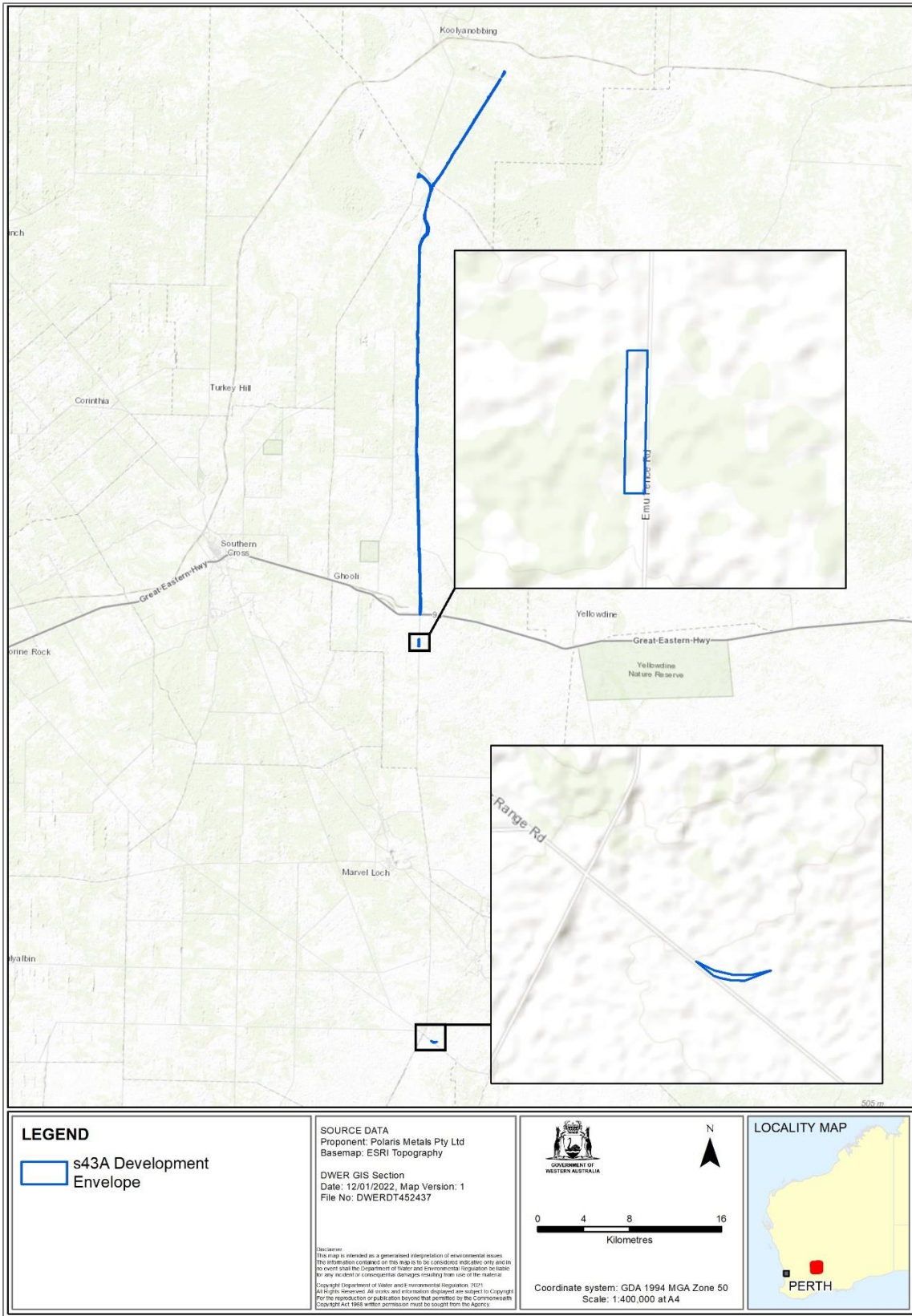
Type text here

**Prof. Matthew Tonts**  
**Delegate of the Environmental Protection Authority**  
CHAIR

15 July 2022

**Attachments**

1. Proposal Content Document
2. Figure 1 – Amended development envelope



**Figure 1: Amended Development Envelope**

## Summary of reasons for decision – request to amend a referred proposal during assessment under s. 43A of the *Environmental Protection Act 1986*

**Proposal title:** Parker Range (Mt Caudan) Iron Ore Haul Road Revised Proposal

**Date request to amend referred proposal under s. 43A received:** 11 May 2022

**Proponent:** Polaris Metals Pty Ltd

**Proposal referral date:** 14 May 2021

**Level of assessment:** Referral information with additional information required under section 40(2)(a) of the *Environmental Protection Act 1986* (2-week public review)

### Existing referred proposal:

The proposal involves the development of a haul road to transport iron ore to Mineral Resources Limited's Koolyanobbing Operations for processing. The proposal is approximately 52 kilometres (km) south of Southern Cross and 15 km southeast of Marvel Loch, in the Shire of Yilgarn.

### Short description of amendment(s) sought:

The requested amendment is to change the native vegetation clearing from 203 hectares (ha) to 173 ha (reduction of 30 ha). The components of the proposal as approved under Ministerial Statement 892 are to remain unchanged.

The amendment is requested to correct an administrative error in the native vegetation clearing required for the proposal.

### Decision:

Amendment to proposal as set out in attachment 1 is approved.

### Environmental factors relevant to amendment(s):

- Flora and Vegetation: clearing of native vegetation
- Terrestrial Fauna: loss of potential habitat for conservation significant fauna species.

### Summary of likely changes to environmental impacts from proposed amendment

Amendment sought	Changes to environmental impacts
Change to native vegetation clearing from 203 ha to 173 ha (reduction of 30 ha).	<p>The proposed change does not alter the key environmental factors likely to be impacted by the proposal activities, which will be considered during the assessment of the proposal.</p> <p>The change results in a reduction in native vegetation clearing and hence a reduction in associated environmental impacts to the environmental factors of Flora and Vegetation and Terrestrial Fauna.</p>

### **Summary of consultation**

No consultation has been undertaken by the proponent on the s.43A application. The additional information required under s. 40(2)(a) incorporating the proposed amendments will be subject to 2-weeks public review, which is considered to be adequate consultation.

### **Summary of consideration of amendment**

The EPA has considered whether, if the proposal were already approved, the amendment would be a significant amendment. This has included considering the likely significance of:

- Effects of the proposed amendment on its own
- Effects of the proposed amendment in the context of the existing referred proposal
- Cumulative environmental impacts
- Holistic impacts

The EPA has considered whether it has sufficient information about the proposed amendment to be able to reasonably proceed with assessment of the amended proposal with or without performing any additional functions at this stage.

The EPA has considered whether the amended proposal will still be substantially the same character as the existing referred proposal.

### ***Approval – not a significant amendment***

The EPA considers the amended proposal to be substantially the same character as the existing referred proposal, and does not consider that the amendment would be a significant amendment if the proposal were already approved. The EPA considers it has enough information to reasonably proceed with assessment of the amended proposal without performing any additional functions at this stage.

### **Attachments**

1. Amended Proposal Content Document

**Appeals:** Decision not appealable.

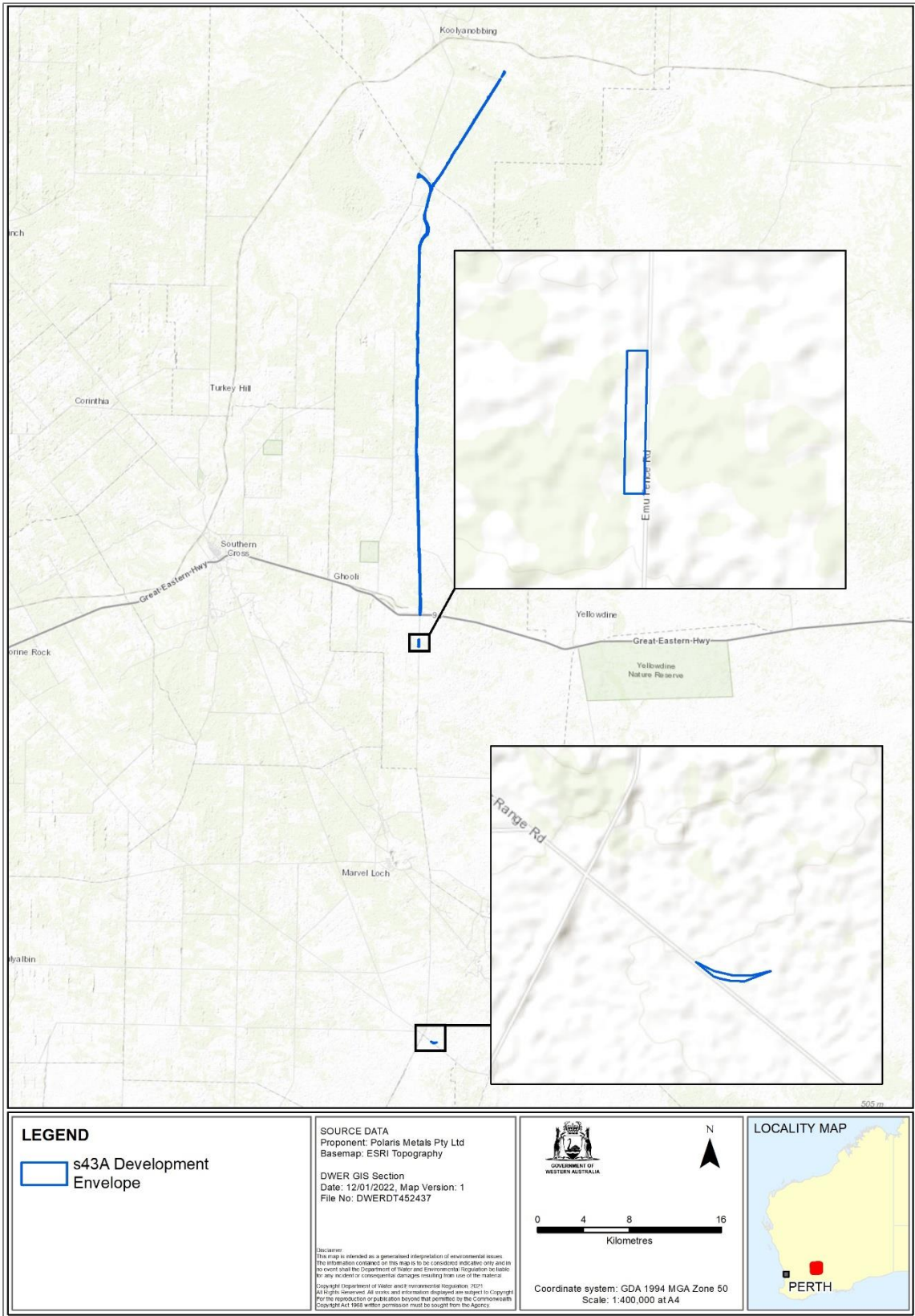


**Prof. Matthew Tonts**

CHAIR

Delegate of the Environmental Protection Authority

**Date:** 15 July 2022



**Figure 1: Amended Development Envelope**

# Proposal Content Document

**Table 1:** General proposal content description

<b>Proposal title</b>	Parker Range (Mt Caudan) Iron Ore Project Haul Road
<b>Proponent name</b>	Polaris Metals Pty Ltd, as a subsidiary of Mineral Resources Limited
<b>Short description</b>	The proposal involves the development of a Haul Road to transport Iron Ore to MRL's Koolyanobbing Operations for processing

**Table 2:** Proposal content elements

Proposal element	Location / description	Existing Proposal extent, capacity or range	Proposed Amendment	Maximum extent, capacity or range
<b>Physical elements</b>				
Haul Road	Figure 1 and 2	Clearing of no more than 298 ha of native vegetation and use of up to 54 ha of existing disturbance, resulting in a 352 ha Indicative Footprint within a 539 ha Development Envelope (DE).	Reduction in Development Envelope from 539 ha to 339 ha and reduction in indicative footprint from 352 ha to 210 ha, resulting in clearing of up to 173 hectares (ha) of native vegetation	Clearing of up to 173 hectares (ha) of native vegetation and use of existing disturbed land within a 339 ha Development Envelope.
<b>Construction elements</b>				
Haul Road	Figure 1 and 2	Construction and operation of an approximately 88 km bitumen sealed haul road	Reduction in proposed extent of bitumen sealed haul road from 88 km to 52 km	Construction of approximately 52 kilometres of bitumen seal haul road including the installation of culverts, drains and floodways to maintain flows.
<b>Operational elements</b>				
Haul Road	Figure 1 and 2	Operation of approximately 88 km of bitumen seal Haul Road with operation	Reduction only in proposed extent of bitumen sealed haul	Operation of approximately 52 km of bitumen seal Haul Road with operation

		24 hours per day, 365 days per year, with nominally between 110 to 160 of ore haulage vehicle movements per day.	road from 88 km to 52 km	24 hours per day, 365 days per year, with nominally between 110 to 160 of ore haulage vehicle movements per day.
<b>Proposal elements with greenhouse gas emissions</b>				
Not applicable – Greenhouse Gas Emissions is not a 'Key Environmental Factor' for the Revised Proposal (refer to determination of EPA 2021a). Greenhouse Gas Emissions will be reported in accordance with the Commonwealth <i>National Greenhouse and Energy Reporting Act 2007</i> (C'th).				
<b>Rehabilitation</b>				
Not applicable – Rehabilitation to be assessed and regulated by the State Department of Mines, Industry Regulation and Safety in accordance with a Mine Closure Plan under the State <i>Mining Act 1978</i> (WA)				
<b>Commissioning</b>				
Not applicable – Commissioning is not relevant for a Haul Road				
<b>Decommissioning</b>				
Not applicable – Decommissioning to be assessed and regulated by the State Department of Mines, Industry Regulation and Safety in accordance with a Mine Closure Plan under the State <i>Mining Act 1978</i> (WA)				
<b>Other elements which affect extent of effects on the environment</b>				
Proposal time*	Minimum project life	5 – 10 years <sup>1</sup>	No change	5 – 10 years <sup>1</sup>
	Construction phase	Approximately 6 months	No change	Approximately 6 months
	Operations phase	24 hours per day, 365 days per year	No change	24 hours per day, 365 days per year

\* Proponents should only provide realistic timeframes to avoid unnecessary change to proposal applications at referral (section 38C), assessment (section 43A) or post assessment (section 45C).

<sup>1</sup> Proposal time will be dependent on actual mining rates which may vary as a result of market conditions.