

Tabba Tabba Project

Proposal Content Document

Table 1: General proposal content description

Proposal title	Tabba Tabba Project
Proponent name	Wildcat (Tabba) Pty Ltd
Short description	<p>Wildcat (Tabba) Pty Ltd (Wildcat, the Proponent), a wholly owned subsidiary of Wildcat Resources Ltd proposes to develop the Tabba Tabba Project (Tabba Tabba, the Proposal) located in the Pilbara region of Western Australia, to mine spodumene, tantalum and petalite through open pit and underground mining methods. The Proposal is located within the Nyamal Native Title Determination Area and is approximately 50 km southeast of Port Hedland (Figure 1).</p> <p>Wildcat proposes to mine and process lithium and tantalum through a 4.5Mtpa spodumene processing plant, 1Mtpa petalite processing plant and 0.5Mtpa tantalum processing plant.</p> <p>The Proposal includes open pits, boxcut to underground portal, Waste Rock Landforms (WRLs), an integrated waste landform (IWL) tailings storage facility (TSF), run-of-mine (ROM) pad, administration and workshop buildings, accommodation village, waste water treatment plants, landfills, dewatering and borefield infrastructure, hybrid power station (including LNG turbines, solar farm and battery energy storage system (BESS)) and associated mining infrastructure.</p>

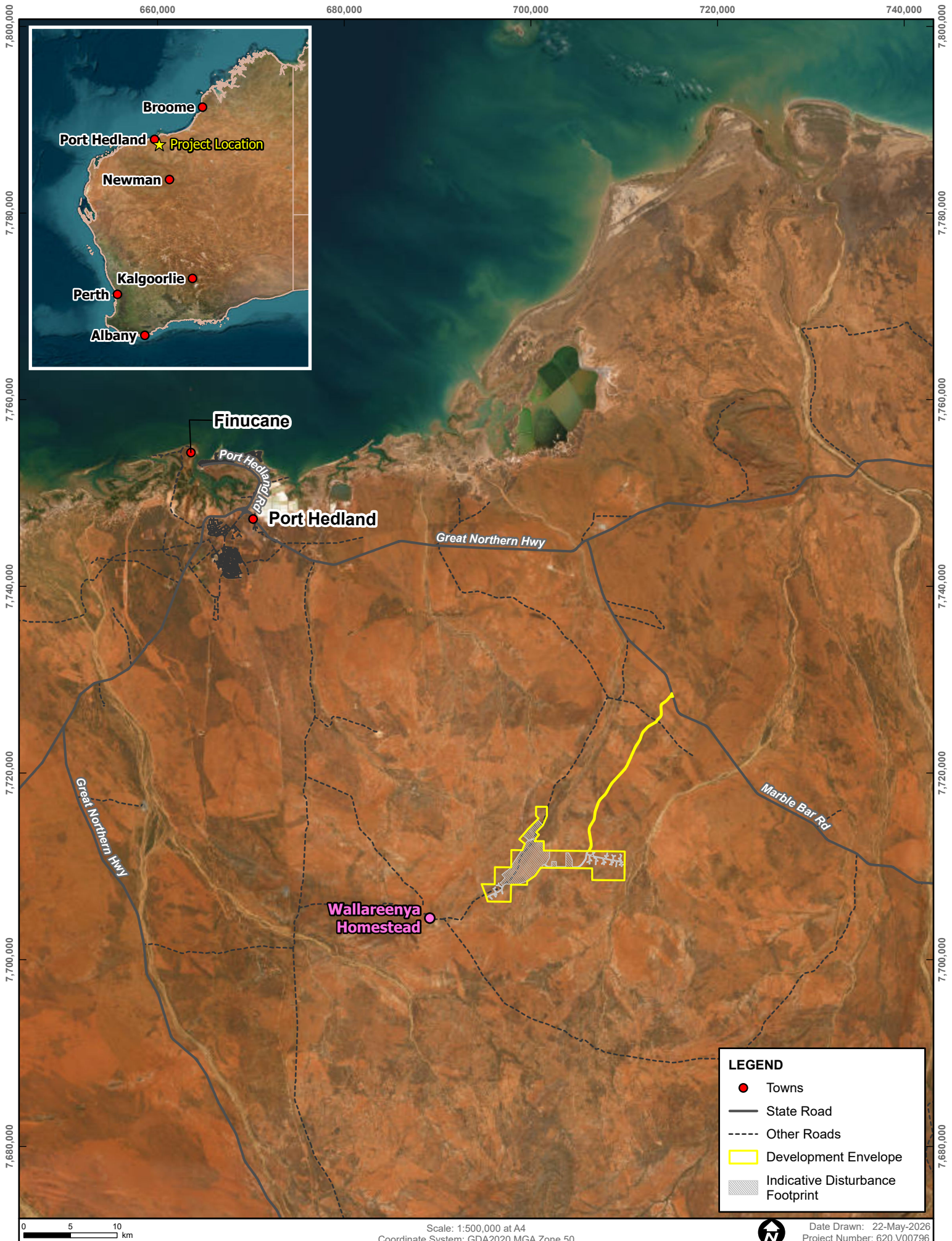
Table 2: Proposal content elements

Proposal element	Location / description	Maximum extent, capacity or range
Physical elements		
Mine Elements including: <ul style="list-style-type: none">• Open pits• Underground mining• Haul roads• Waste Rock Landforms (WRLs)• Low-grade ore stockpiles• Topsoil stockpiles	Figure 2	Up to 2,180 ha of disturbance inside a development envelope of 4,840 ha.
Mine dewatering infrastructure including: <ul style="list-style-type: none">• Abstraction bore fields• Pipelines• Inpit dewatering system• Water management ponds		
Processing elements including:		

Proposal element	Location / description	Maximum extent, capacity or range
<ul style="list-style-type: none"> Run of Mine (ROM) pad and ore stockpiles Processing plants (including spodumene, tantalum and petalite). Tailings storage facility (TSF) Tailings and return pipelines Process water ponds. 		
Power generating elements including: <ul style="list-style-type: none"> Gas turbine generator Solar farm Battery energy storage systems (BESS) Associated power infrastructure 		
Support infrastructure including: <ul style="list-style-type: none"> Access roads Accommodation village Wastewater treatment plants (WWTPs) and sprayfields Pipelines Surface water management infrastructure Workshops Offices Warehouses Laydown areas Explosives magazines Borrow pits Other ancillary infrastructure 		
Operational elements		
Mine dewatering and groundwater abstraction	Figure 2	Up to 6 GL/year
Mineral processing		<ul style="list-style-type: none"> Up to 4.5 million tonnes per annum (Mtpa) spodumene Up to 1.0 Mtpa petalite Up to 0.5 Mtpa tantalum
Waste tonnes mined		Approx 290 million tonnes
Tailings deposition		Up to 74.1 Mt
Proposal elements with greenhouse gas emissions		
Construction Elements		
Estimate total scope 1 emissions	157,541 tCO ₂ -e	
Estimate total scope 2 emissions	0	
Estimate total scope 3 emissions	125,399 tCO ₂ -e	

Proposal element	Location / description	Maximum extent, capacity or range
Operation elements:		
Estimate total scope 1 emissions	1,650,769 tCO ₂ -e	
Estimate total scope 2 emissions	0 CO ₂ -e	
Estimate total scope 3 emissions	3,327,477 tCO ₂ -e	
Rehabilitation		
<p>Initial closure considerations have been included as part of site layout planning and materials characterisation. A Conceptual Mine Closure Plan (MCP) has been provided as Appendix F to the Referral Supporting Document that details the strategy to mine closure for the Project. A detailed Mining Development and Closure Proposal (MDCP) will be completed as part of environmental approvals under the <i>Mining Act 1978</i> (Mining Act) with the Department of Mines, Petroleum and Exploration (DMPE). An MCP will be reviewed and updated as determined by DMPE and in accordance with conditions set in the Approvals Statement.</p>		
Commissioning		
<p>Commissioning of the relevant infrastructure including the processing facility, tailings storage facility and waste water treatment plants will be undertaken subject to operational limits described above and in accordance with the Works Approval conditions approved under Part V EP Act.</p>		
Decommissioning		
<p>Decommissioning of project infrastructure will occur in the 1.5 years following the operations phase and in accordance with the DMPE approved Mine Closure Plan.</p>		
Other elements which affect extent of effects on the environment		
Proposal time*	Maximum project life	20 years
	Construction phase	1.5 years
	Operations phase	17 years
	Decommissioning phase	1.5 years

* Proponents should only provide realistic timeframes to avoid unnecessary change to proposal applications at referral (section 38C), assessment (section 43A) or post assessment (section 45C).



LEGEND

- Towns
- State Road
- Other Roads
- Development Envelope
- Indicative Disturbance Footprint

0 5 10 km

Scale: 1:500,000 at A4
 Coordinate System: GDA2020 MGA Zone 50



Date Drawn: 22-May-2026
 Project Number: 620.V00796



**TABBA TABBA PROJECT
 PROPOSAL CONTENT DOCUMENT**

PROPOSAL LOCATION





Earthstar Geographics
 Drawn by: JWP

DISCLAIMER: All information within this document may be based on external sources. SLR Consulting Pty Ltd makes no warranty regarding the data's accuracy or reliability for any purpose.






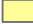






FIGURE 1

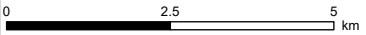
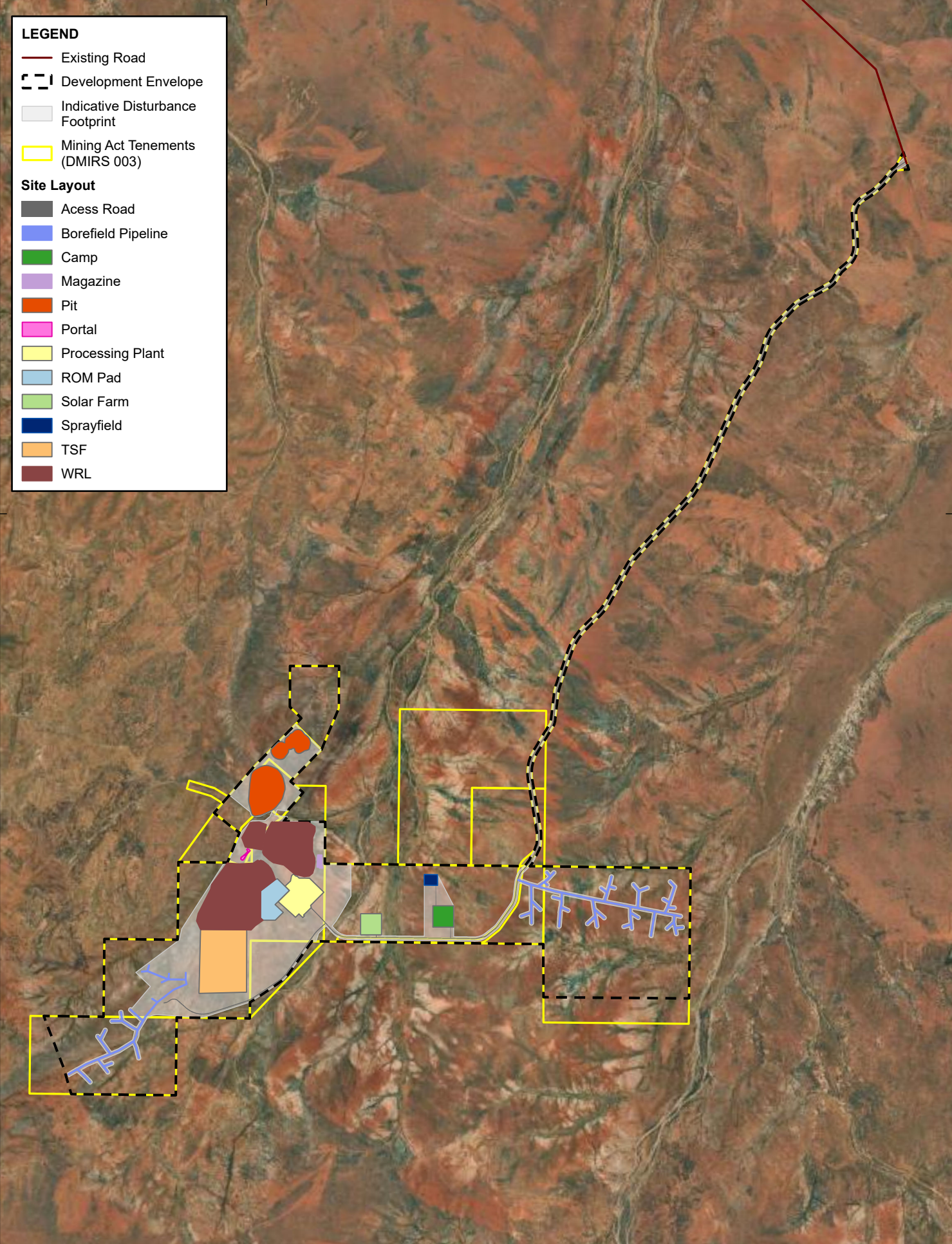
Path: H:\Local Resources\Mining Advisory\AD\GIS\03-Projects\Australia-WA\TabbaTabbaLithium\AD\VAU00796\01-ESRI\AD\VAU00796.aprx\ERD Fig 1-1_Proposal Location

LEGEND


-  Existing Road
-  Development Envelope
-  Indicative Disturbance Footprint
-  Mining Act Tenements (DMIRS 003)

Site Layout

-  Access Road
-  Borefield Pipeline
-  Camp
-  Magazine
-  Pit
-  Portal
-  Processing Plant
-  ROM Pad
-  Solar Farm
-  Sprayfield
-  TSF
-  WRL



Scale: 1:115,528 at A4
 Coordinate System: GDA2020 MGA Zone 50

 Date Drawn: 22-May-2026
 Project Number: 620.V00796



**TABBA TABBA PROJECT
 PROPOSAL CONTENT DOCUMENT**

**PROPOSED DEVELOPMENT
 ENVELOPE AND INDICATIVE
 SITE LAYOUT**

Earthstar Geographics
 Drawn by: JWP

DISCLAIMER: All information within this document may be based on external sources. SLR Consulting Pty Ltd makes no warranty regarding the data's accuracy or reliability for any purpose.

FIGURE 2

Path: H:\Local Resources\Mining Advisory\ADV\GIS\03-Projects\Australia-WA\TabbaTabbaLithium\ADV\AU00796\01-ESRI\ADV\AU00796.aprx\ERD Fig 2-1_Proposed Development Envelope and Indicative Site Layout