

**Rhodes Ridge**

Management Services Pty Ltd

# **Rhodes Ridge Iron Ore Project**

Proposal Content Document

---

Rhodes Ridge Management Services Pty Ltd

152-158 St Georges Terrace, Perth WA 6000

GPO Box A42, Perth WA 6837

RTIO-1038570

# Rhodes Ridge

Management Services Pty Ltd

## Proposal Content Description

**Table 1** provides the general content description of the Proposal, including a description of the proposed activities. Detailed elements of the Proposal are described in **Table 2**.

The Proposal location is shown in **Figure 1**.

**Table 1: General proposal content description**

<b>Proposal title</b>	Rhodes Ridge Iron Ore Project
<b>Proponent name</b>	Rhodes Ridge Management Services Pty Ltd
<b>Short description</b>	<p>The Proposal is for the development of the Rhodes Ridge Iron Ore Project (the Proposal), located approximately 40 km north-west of Newman, in the Shire of East Pilbara.</p> <p>The Proposal includes the development of new above and below water table deposits, and associated activities. The proposal includes but is not limited to:</p> <ul style="list-style-type: none"><li>- Development of new deposits including above and below water table mining at Rhodes Ridge Main and Arrowhead deposits and above water table mining only at Giles Mini deposits</li><li>- Ore processing (wet and dry), transport and handling infrastructure</li><li>- Ore, topsoil and subsoil stockpiles</li><li>- Mineral waste management including but not limited to waste rock dumps, storage of waste fines, low grade ore dumps</li><li>- Surface water management infrastructure</li><li>- Groundwater abstraction infrastructure</li><li>- Dewatering and surplus water management</li><li>- Renewable energy infrastructure including solar farm</li><li>- Other associated infrastructure and support facilities including accommodation camps, workshops, hydrocarbon storage, laydown areas and offices</li></ul> <p>The Proposal requires a disturbance footprint of up to 14,850 ha within a 61,301 ha Development Envelope.</p>

# Rhodes Ridge

Management Services Pty Ltd

**Table 2: Proposal content elements**

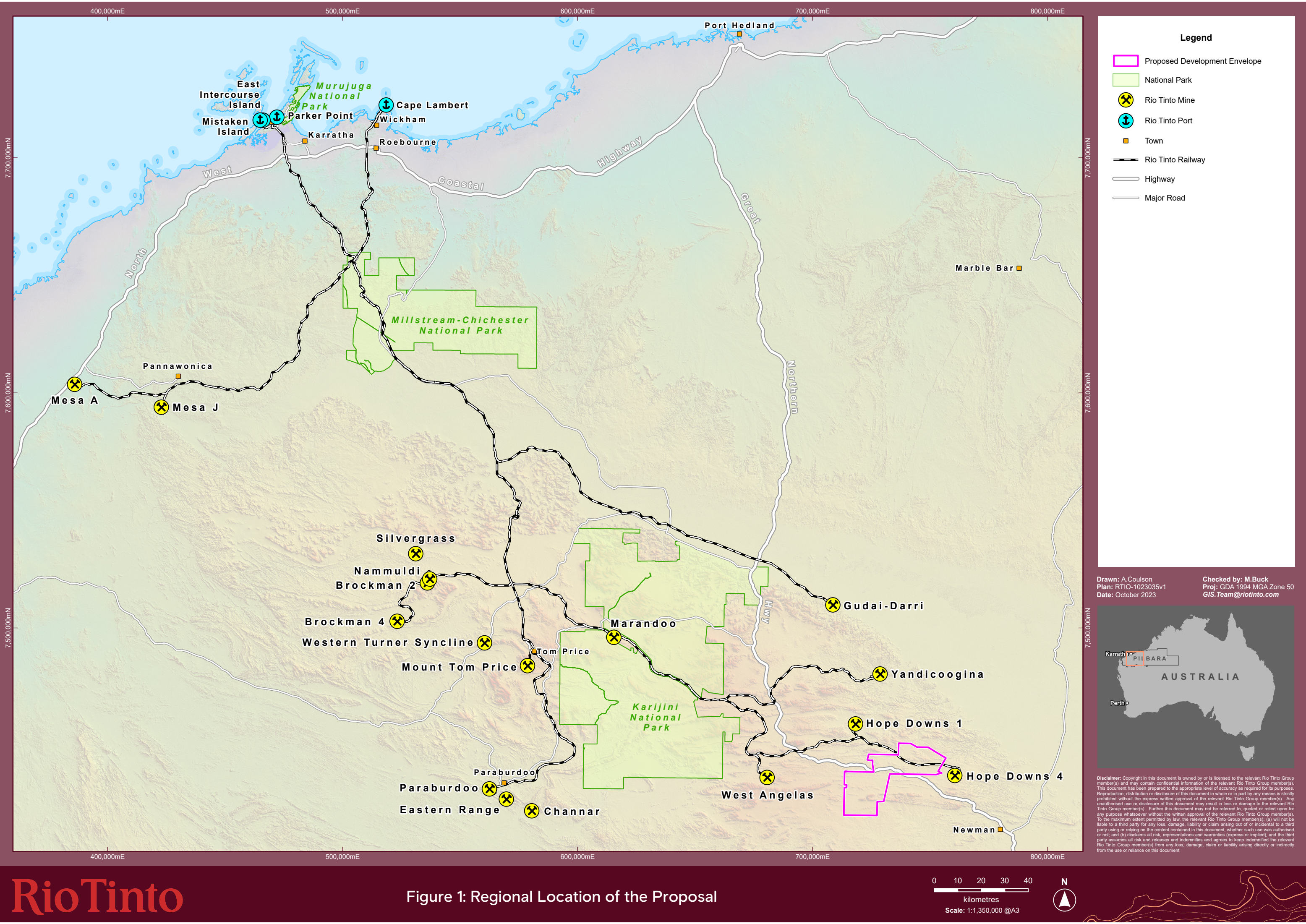
Proposal element	Location / description	Maximum extent, capacity or range
<b>Physical elements</b>		
<p>Mine and associated infrastructure elements including but not limited to:</p> <ul style="list-style-type: none"> <li>- Open pits (above and below water table) at Rhodes Main and Arrowhead deposits, and Giles Mini (above water table only)</li> <li>- Water management infrastructure including culverts, drains and diversions</li> <li>- Haul roads,</li> <li>- Waste rock landforms</li> <li>- Ore stockpiles</li> <li>- Topsoil stockpiles</li> <li>- Power generation infrastructure including solar</li> <li>- Accommodation and site offices</li> <li>- Landfill and waste management facilities</li> <li>- Other associated infrastructure and support facilities including, workshops, hydrocarbon storage, laydown areas and explosive handling facilities.</li> </ul>	Figure 2	Disturbance footprint of up to 14,850 ha within a 61,301 ha Development Envelope
<b>Construction elements</b>		
<p>Construction elements will include, but not limited to:</p> <ul style="list-style-type: none"> <li>- Construction camp</li> <li>- temporary offices / ablutions</li> <li>- access roads</li> <li>- borrow pits</li> <li>- laydowns</li> <li>- water supply infrastructure including but not limited to pumps, pipelines, bores and turkey nests</li> <li>- movement of topsoil and bulk earthworks</li> </ul>	Figure 2	Disturbance for construction elements captured within the indicative clearing footprint
<b>Operational elements</b>		
Production capacity		Up to 50 million tonnes per annum (mtpa)
Abstraction of groundwater for pit dewatering and operational supply		Peak of 80 gigalitres per annum (GL/a)

# Rhodes Ridge

Management Services Pty Ltd

Proposal element	Location / description	Maximum extent, capacity or range
Tailings Storage	Figure 2	Up to 6 mtpa. Cumulative tailings of 100 mt (25 year life of mine)
Surplus water management		Up to 50 GL/a surplus. Surplus water will be managed through a range of options including aquifer recharge, surface discharge, and transfer to other users including to third-party operations.  Surface discharge options: Option 1 – Discharge to Western Creek Option 2 – Discharge to Spearhole Creek
Proposal elements with greenhouse gas emissions		
Operation elements:		
Mining and associated activities (diesel emissions)	Scope 1 - peak emissions approximately 370,000 tCO2-e	
Electricity emissions	Scope 2 – peak emissions approximately 160,000 tCO2-e	
	Scope 3 – peak emissions approximately 70,000,000 tCO2-e	
Rehabilitation		
Progressive rehabilitation will be undertaken throughout the life of mine where practicable. The key closure outcome of this Proposal will be a safe, stable and non-polluting landscape consistent with the post-mining land use and will consider environmental and cultural heritage values.		
Commissioning		
Commissioning will be undertaken in accordance with the requirements of approvals under the <i>Environmental Protection Act 1986</i> .		
Decommissioning		
The Mine Closure Plan will outline the plan for decommissioning of the mine and post-mining land use.		
Other elements which affect extent of effects on the environment		
Proposal time*	Maximum project life	35 years
	Construction phase	Approximately 5 years
	Operations phase	Approximately 25 years
	Decommissioning phase	Approximately 5 years







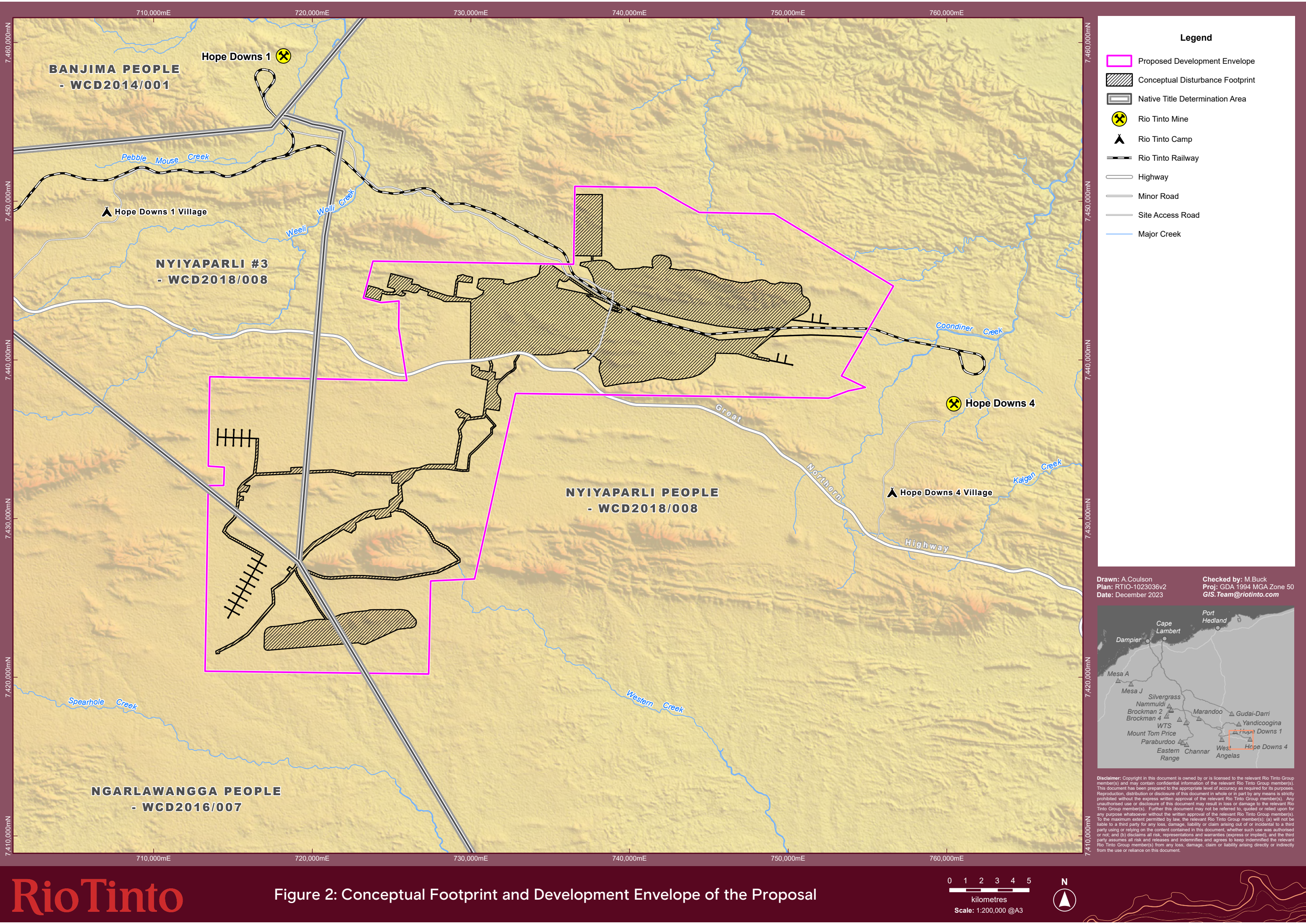


Figure 2: Conceptual Footprint and Development Envelope of the Proposal