

# Newmont Boddington Mine Life of Mine Extension Amendment

## Proposal Content Document

**Table 1:** General proposal content description

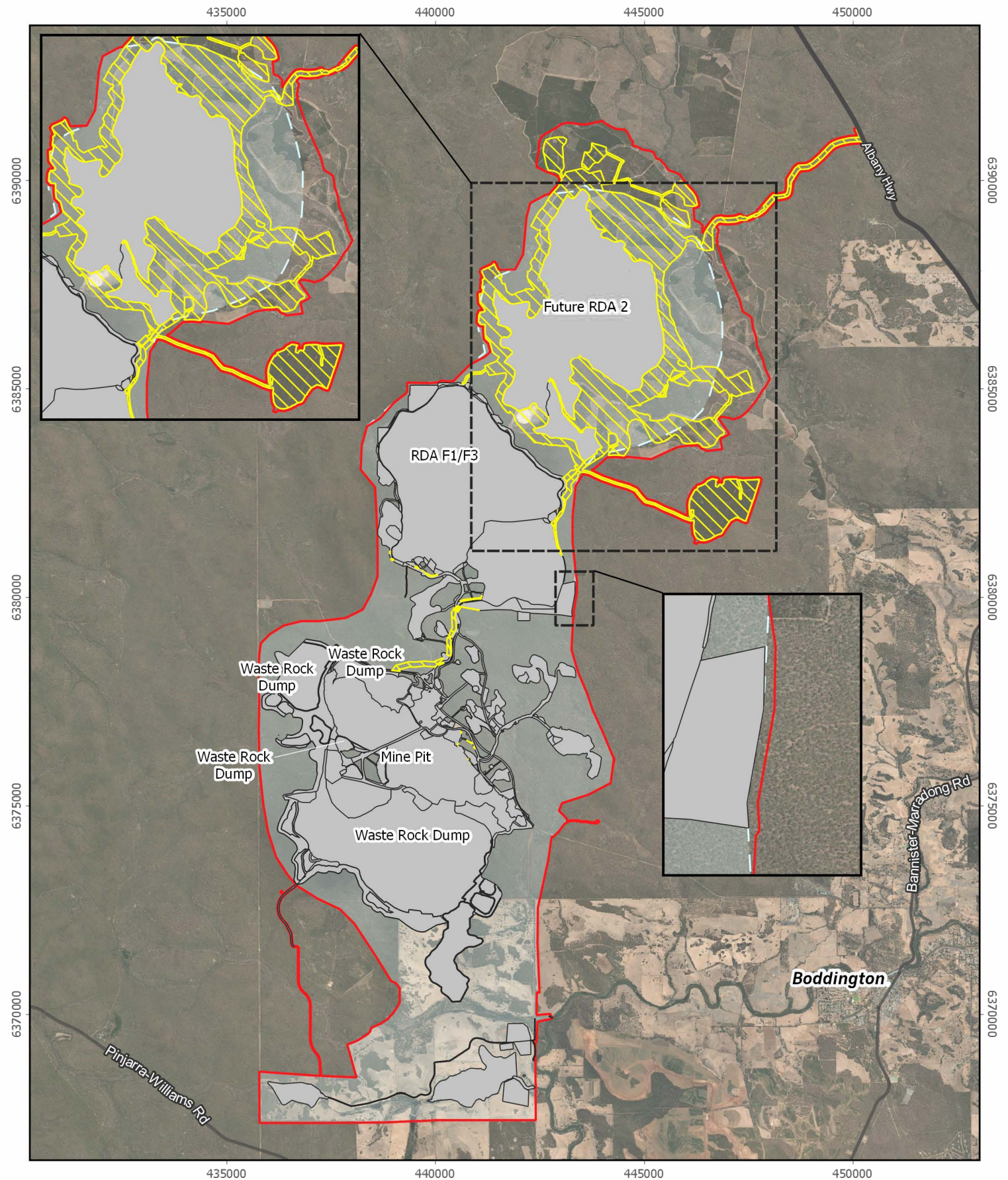
<b>Proposal title</b>	Newmont Boddington Mine Life of Mine (LOM) Extension Amendment
<b>Proponent name</b>	Newmont Boddington Gold Pty Ltd (Newmont Boddington)
<b>Short description</b>	<p>The Proposal is for the continuation of the existing operations and for an expansion of the existing operations at the Newmont Boddington Mine and includes, but is not limited to:</p> <ul style="list-style-type: none"><li>• bauxite preservation and stockpiling as required</li><li>• expansion of the access road from Albany Highway</li><li>• access and perimeter roads</li><li>• pipeline and powerline corridors</li><li>• surface water management infrastructure</li><li>• construction laydowns</li><li>• office and workshop areas</li><li>• access road from the mine</li><li>• rehabilitation material (topsoil and gravel) stockpiles and construction material stockpiles</li><li>• footprint for the F1/F3 RDA closure spillway construction</li><li>• potential discharge of treated water to the environment; and</li><li>• other associated infrastructure for the Proposal and Approved Proposal.</li></ul> <p>The Proposal includes potential discharge of treated water to the Hotham River.</p>

**Table 2:** Proposal content elements

<b>Proposal element</b>	<b>Location and description</b>	<b>Existing proposal extent, capacity or range (Approved Proposal)</b>	<b>Proposed amendment (Proposal)</b>	<b>Maximum extent, capacity or range (Revised Proposal)</b>
<b>Physical element</b>				
Development Envelope	Figure ES	12,856 ha	Increase development envelope by 1,326 ha	14,182 ha

Proposal element	Location and description	Existing proposal extent, capacity or range (Approved Proposal)	Proposed amendment (Proposal)	Maximum extent, capacity or range (Revised Proposal)
Disturbance Footprint	Figure ES	Clearing of no more than 6,923 ha of vegetation within the 12,856 ha development envelope	Additional clearing of up to 1,560 ha of vegetation	Clearing of no more than 8,483 ha of vegetation within the 14,182 ha development envelope
Clearing of Native Vegetation	Figure ES	Clearing of no more than 5,435 ha of native vegetation within the 12,856 ha development envelope	Additional clearing of up to 528 ha of native vegetation	Clearing of no more than 5,963 ha of native vegetation within the 14,182 ha development envelope
Waste Rock Dumps	Figure ES	1500 Mt over life of proposal.	No change	1500 Mt over life of proposal.
Mine Activities	Figure ES	Open cut basement mining to approximately 252 annual height datum (AHD) for the north pit and - 432 AHD south pit.	No change	Open cut basement mining to approximately 252 AHD for the north pit and - 432 AHD south pit.
<b>Operational element</b>				
Mine life		Continued operations until 2041	Operations continued until approximately 2046	Continued operations until approximately 2046
Water use		47 megalitres per day (ML/day)	No change	47 ML/day
<b>Rehabilitation</b>				
Progressive rehabilitation will be undertaken throughout the life of mine where practicable. The key closure outcome of this Proposal will be a safe, stable and non-polluting landscape consistent with the post-mining land use and will consider environmental and cultural heritage values.				
<b>Commissioning</b>				
Commissioning will be undertaken in accordance with the requirements of approvals under the EP Act.				
<b>Decommissioning</b>				

Proposal element	Location and description	Existing proposal extent, capacity or range (Approved Proposal)	Proposed amendment (Proposal)	Maximum extent, capacity or range (Revised Proposal)
The Mine Closure Plan (MCP) will outline the plan for decommissioning of the mine and post-mining land use				
<b>Other elements which affect extent of effects on the environment</b>				
Proposal time	Continued Operations	2041	2046	20 years



**Figure Es1: Current and Proposed Operations**

**LEGEND**

- Main Roads and Highways
- ▨ Proposal Footprint
- ▒ Approved Disturbance Footprint
- ▭ Revised Development Envelope
- ▭ Approved Development Envelope



Client: Newmont Australia  
Project and Phase: 1001665  
Data: Newmont Australia (2024), CDM  
Smith Australia (2024)  
Imagery Esri Satellite

**CDM  
Smith**  
listen. think. deliver.