

# Harvey Water Brine Pipeline and Outfall

## Proposal Content Document

**Table 1:** General proposal content description

<b>Proposal title</b>	Brine Pipeline and Outfall – EPA Assessment Number 2289
<b>Proponent name</b>	Harvey Water
<b>Short description</b>	<p>Harvey Water is proposing to construct a wastewater pipeline and ocean outfall to dispose brine wastewater from customers located within the Kemerton Strategic Industrial Area (KSIA), Western Australia (the Proposal). The Proposal represents essential enabling infrastructure, which will support the development of strategic industry in the KSIA and creation of local jobs.</p> <p>The Proposal requires construction of approximately 9.5 km of pipeline, connecting to an existing 1.5 km section. The final pipeline is approximately 11 km in length and extends from the KSIA to the Indian Ocean, within the Shire of Harvey.</p>

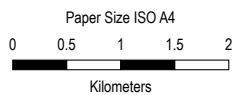
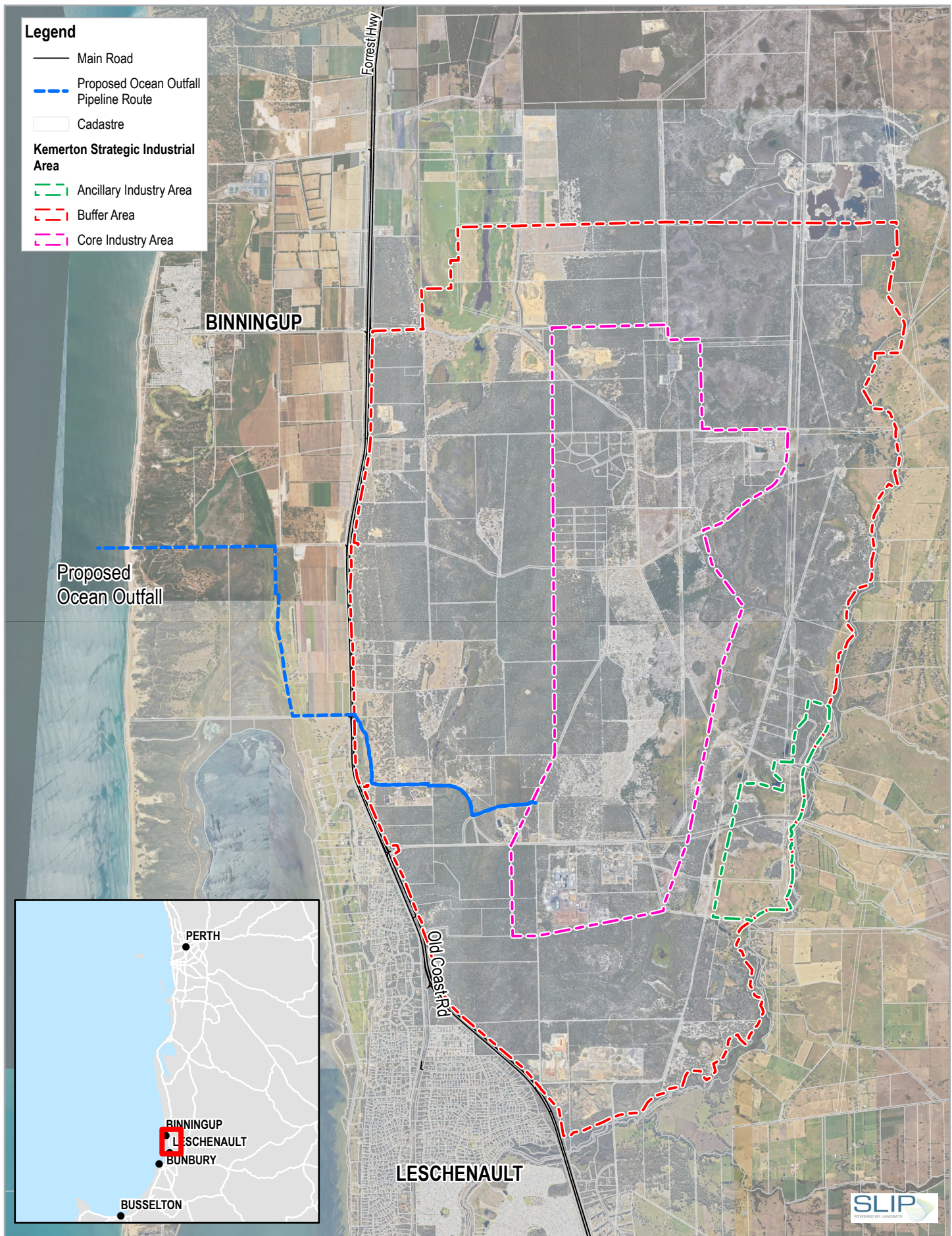
**Table 2:** Proposal content elements

Proposal element	Location/ description	Maximum extent, capacity or range
<b>Physical elements</b>		
Brine wastewater pipeline	Figure 1-1 Proposal Location	The Proposal Development Envelope (DE) required for the construction and operation covers an area of no more than 17.16 ha with a maximum development footprint of 8.50 ha. A work area intersecting a maximum of 0.27 ha of native vegetation will be cleared during construction.
<b>Operational elements</b>		
Ocean outfall	Figure 1-1 Proposal Location	No more than 500 ML/year, at ambient density less than seawater.
<b>Proposal elements with greenhouse gas emissions</b>		
Construction elements:		
Scope 1 - 78 tCO <sub>2</sub> e	Does not exceed 100,000 tCO <sub>2</sub> e annually	
Scope 2 - n/a		
Scope 3 - 1,791 tCO <sub>2</sub> e		

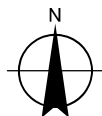
Operation elements:		
Scope 1 - n/a	Does not exceed 100,000 tCO <sub>2</sub> e annually	
Scope 2 - 22 tCO <sub>2</sub> e		
Scope 3 - 2 tCO <sub>2</sub> e		
<b>Rehabilitation</b>		
Not applicable		
<b>Commissioning</b>		
The pipeline will be hydrostatically tested with freshwater supplied via tanker, and test water discharged to the Parkfield Drain or the Indian Ocean.		
<b>Decommissioning</b>		
Not applicable		
<b>Other elements which affect extent of effects on the environment</b>		
Proposal time*	Maximum project life	Not applicable – the wastewater pipeline and outfall would be permanent infrastructure
	Construction phase	Approximately 3 to 4 months
	Operations phase	Ongoing
	Decommissioning phase	Not applicable – the wastewater pipeline and outfall would be permanent infrastructure

*\* Proponents should only provide realistic timeframes to avoid unnecessary change to proposal applications at referral (section 38C), assessment (section 43A) or post assessment (section 45C).*





Map Projection: Transverse Mercator  
 Horizontal Datum: GDA 1994  
 Grid: GDA 1994 MGA Zone 50



**Harvey Water  
 Harvey Water Brine Pipeline and Outfall**

Project No. 12517006  
 Revision No. 1  
 Date 09/10/2020

**Proposal Location**

**FIGURE 1-1**