

Template

Proposal Content Document

Table 1: General proposal content description

Proposal title	Roe Gold Project
Proponent name	Lake Roe Gold Mining Pty Ltd
Short description	<p>Lake Roe Gold Mining Pty Ltd is a wholly owned subsidiary of Ramelius Resources Pty Ltd (Ramelius). Ramelius is proposing to develop and operate a greenfield gold mine, located on the western margin of Lake Roe, in the eastern Goldfields region of Western Australia (WA). The Project is located approximately 150 kilometres (km) east of the City of Kalgoorlie Boulder and 65 km south-west of Ramelius owned Rebecca processing hub, where ore from the Project will be processed.</p> <p>The Project is to develop and operate a greenfield gold mine. Ore mined at the Project will be transported offsite for processing. Ore will be mined from three open pits; Bombora (BOM) 1800, Bombora (BOM) 1100 and Bombora (BOM) 700. At the conclusion of open pit mining, underground mining will commence with three declines established within the BOM 1800 pit.</p> <p>The Project includes the following activities and elements:</p> <ul style="list-style-type: none">• Development of an open pit and underground mining operation with associated ore stockpiles and waste rock landforms (WRL);• Ancillary mining related infrastructure including administration offices, workshops, laydown area, mine dewatering infrastructure and explosives magazine;• General Infrastructure including power supply, communications systems, and internal roads; and• Approximately 50 km service corridor /access road. <p>The Project comprises a maximum Disturbance Footprint of 557.7 ha within an Activity Envelope of approximately 1,543 ha.</p> <p>The Project will mine an estimated 7.85 Mt of ore and produce approximately 23.21 Mt of mine waste over the 9 year mine life.</p> <p>Dewatering will be required to allow open pit and underground mining. Dewatering volumes abstracted will be used for dust suppression and construction purposes. Any excess will be discharged into lined evaporation ponds.</p> <p>There will be no discharge of dewatering water to Lake Roe.</p> <p>See attached Section 38 Referral Supporting Document for further details.</p>

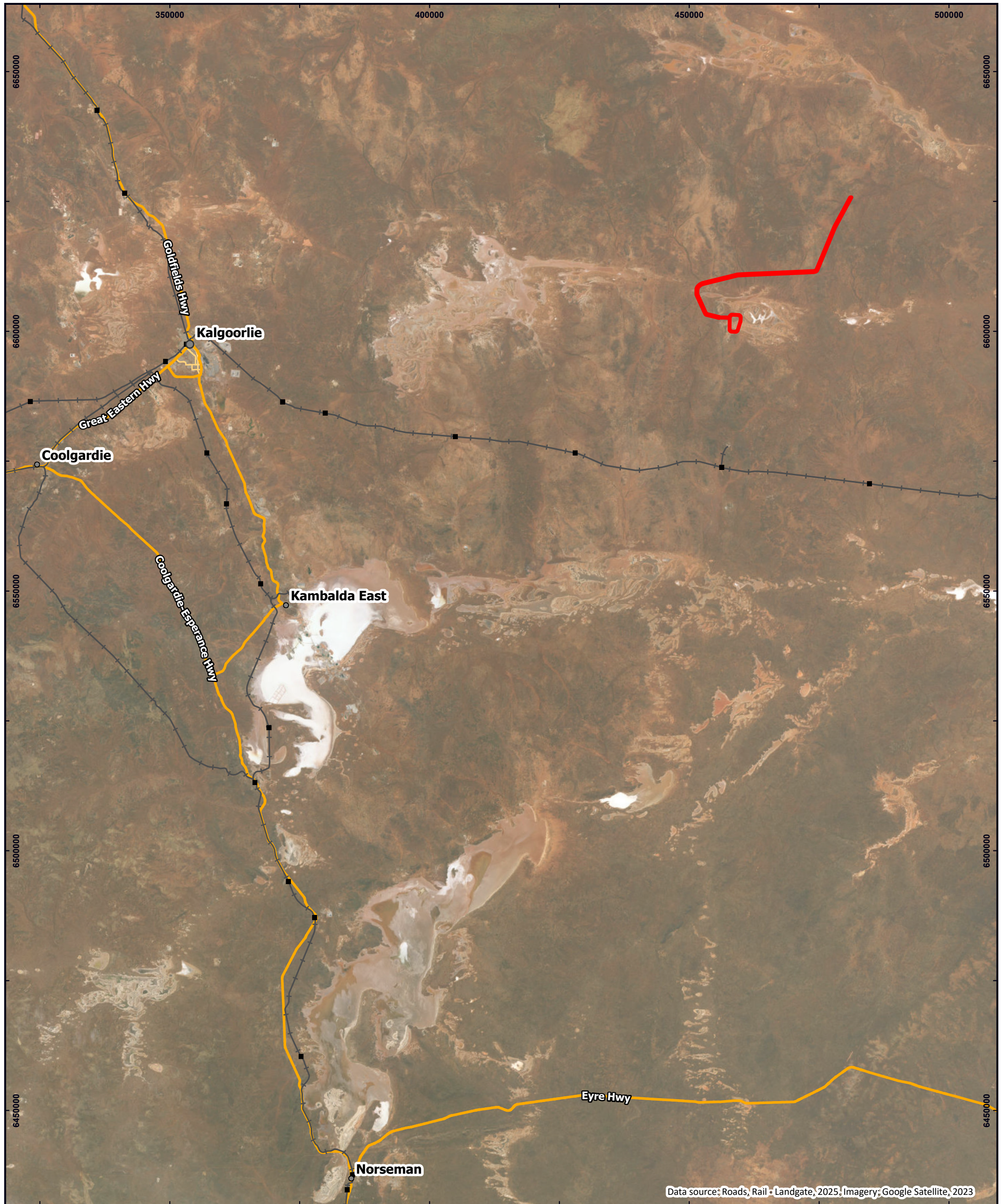
Table 2: Proposal content elements

Proposal element	Location / description	Maximum extent, capacity or range
Physical elements		
Open pits	Figure 2-5	Bombora (BOM) 1800, BOM1100 and BOM 700. Total area 44 ha. BOM700 pit will be backfilled. Area 3.56ha and incorporated into the WRL
Waste Rock Landform (WRL)	Figure 2-5	BOM 1800 WRL and BOM 1100/700 WRL. Total area 48.8ha
Service corridor	Figure 2-1	Approximately 50 km site access road from Rebecca project site. Total area 324.6 ha
Supporting Infrastructure: Ancillary infrastructure, Mine Ore Pads (MOPs), Evaporation ponds, Stockpiles, administration, workshop, power and fuel supply	Figure 2-5	Total area 140.3 ha
Construction elements		
Vegetation clearing	Figure 2-1 Figure 2-5 Figure 8-3	Maximum total disturbance footprint of mine envelope and service corridor access road is 557.7 ha
Vegetation clearing; topsoil stripping and stockpiling	Figure 2-5	Vegetation and topsoil stored in nominated areas in Figure 2-5.
Dewatering	Figure 2-5	In pit pumps transfer mine dewatering water to sediment ponds at the surface. Water offtake from the sediment ponds used for dust suppression. Surplus water transferred to HDPE lined evaporation ponds.
Power generation	Figure 2-5	Portable gensets. Maximum power demand during underground mining phase is approximately 5MW.
Operational elements		
Open pit mining	Figure 2-5	Bombora (BOM) 1800, BOM1100 and BOM 700. Total area 44 ha. BOM700 pit will be backfilled. Area 3.56ha and incorporated into the WRL

WRL	Figure 2-5	BOM 1800 WRL and BOM 1100/700 WRL. Total area 48.8ha
Underground mining	Figure 2-3	No additional surface disturbance
Proposal elements with greenhouse gas emissions		
Construction elements:		
Vegetation Clearing. Site establishment	Scope 1	Emissions for the Project will not exceed the 100,000 tonnes CO ₂ -e per year. Emissions will be generated from the following activities: <ul style="list-style-type: none"> • Diesel consumption of mobile equipment; • Diesel or gas consumption by generators; and • Land clearing, vegetation windrows and topsoil stripping.
	Scope 2	There will be no Scope 2 emissions.
	Scope 3	Scope 3 emissions will be reported annually in accordance with the GHG Protocol Corporate Value Chain Accounting and Reporting Standard.
Operation elements:		
Open pit mining; Underground mining; Ore transport.	Scope 1	Emissions for the Project will not exceed the 100,000 tonnes CO ₂ -e per year. Emissions will be generated from the following activities: <ul style="list-style-type: none"> • Diesel consumption of mobile equipment; • Diesel or gas consumption by generators; and • Land clearing, vegetation windrows and topsoil stripping. <p>Power will be supplied by diesel or gas generators on site. There will be no Scope 2 emissions. The onsite power station is a facility where 100% of power generated is consumed by the Project. The emissions from the power station are therefore categorised as Scope 1.</p>
	Scope 2	There will be no Scope 2 emissions.
	Scope 3	Scope 3 emissions will be reported annually in accordance with the GHG Protocol Corporate Value Chain Accounting and Reporting Standard.

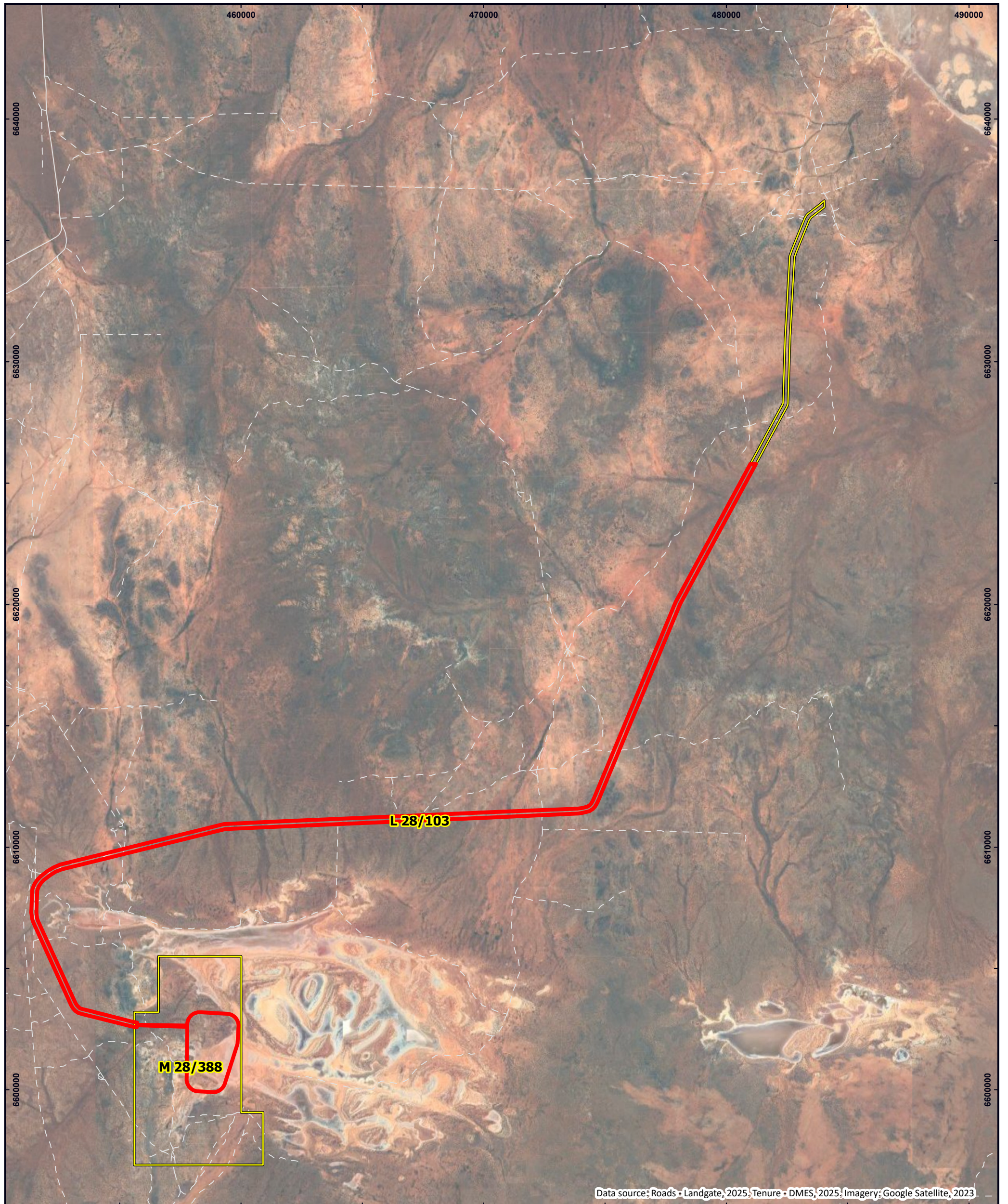
Rehabilitation		
<p><i>Site rehabilitation will be consistent with details in the Mine Closure Plan. In summary:</i></p> <p><i>All surface infrastructure will be removed;</i></p> <p><i>Mine landforms made safe;</i></p> <p><i>WRL's battered to 15 degrees and rehabilitated;</i></p> <p><i>Surface disturbance areas rehabilitated</i></p>		
Commissioning		
<p><i>Commissioning activities and Time Limited Operations are documented in Works Approval application to DWER for Part V (Category 6 – mine dewatering and discharge and Category 89 – Landfill).</i></p>		
Decommissioning		
<p><i>Site decommissioning will be consistent with details in the Mine Closure Plan. In summary:</i></p> <p><i>Remaining supplies of fuel, explosives and other chemicals removed from site;</i></p> <p><i>Power facilities isolated. Gensets removed;</i></p> <p><i>Mine landforms / UG portals, vent rises made safe;</i></p> <p><i>Rehabilitation as per MC.P</i></p>		
Other elements which affect extent of effects on the environment		
Proposal time*	Maximum project life	12 years
	Construction phase	6-12 months
	Operations phase	9 years
	Decommissioning phase	Decommissioning and closure works 3 years

** Proponents should only provide realistic timeframes to avoid unnecessary change to proposal applications at referral (section 38C), assessment (section 43A) or post assessment (section 45C).*



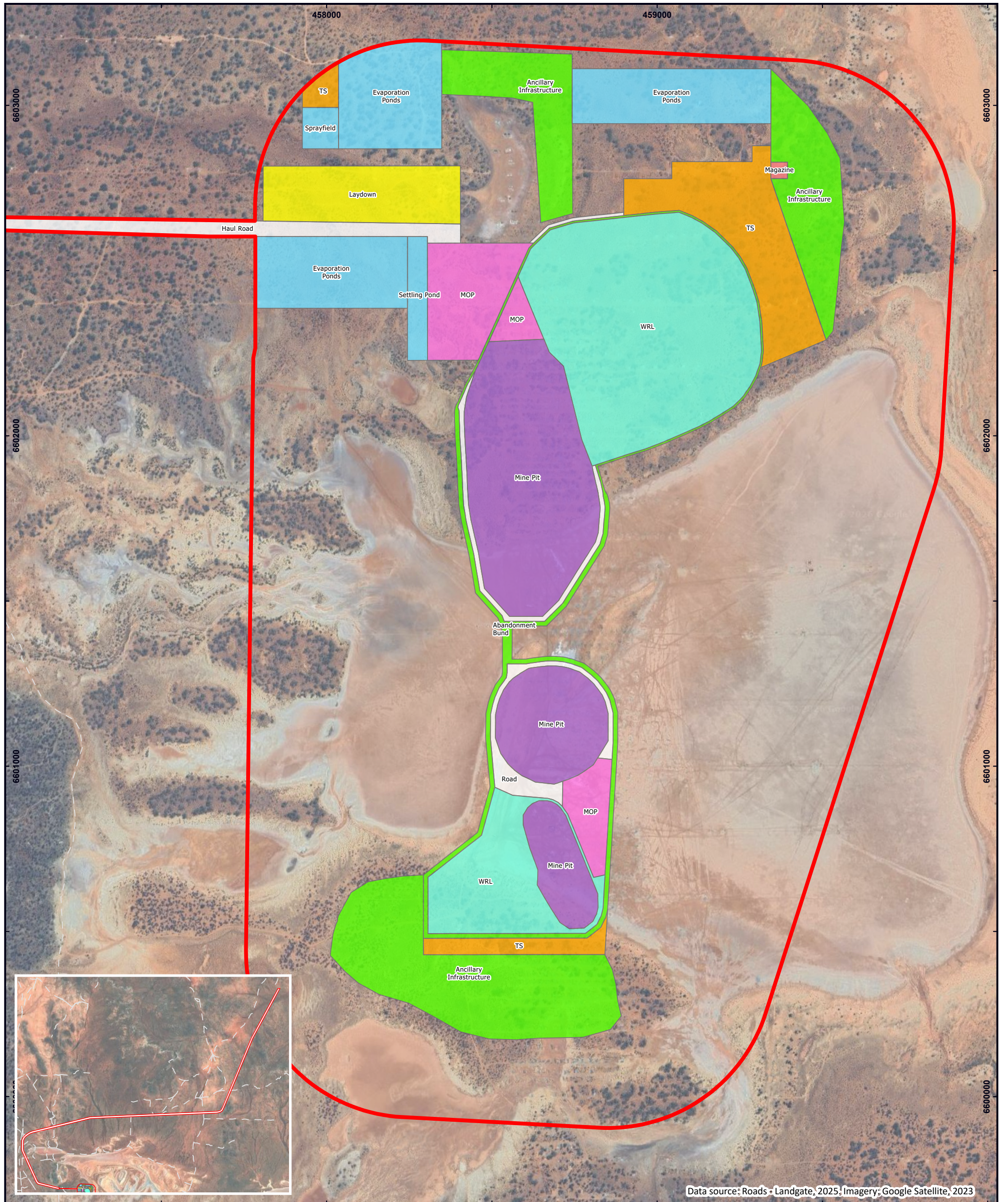
Data source: Roads, Rail - Landgate, 2025, Imagery: Google Satellite, 2023

<p>LEGEND</p> <ul style="list-style-type: none"> Activity Envelope Rail Network ■ Railway Stations —+— Railway Lines Western Australian Roads — Freeway / Highway — Main Road <p><small>© Talis Consultants Pty Ltd ("Talis"). Copyright in the drawings, information and data recorded in this document ("the information") is the property of Talis. This document and the information are solely for the use of the authorised recipient and this document may not be used, transferred or reproduced in whole or part for any purpose other than that which it is supplied by Talis without written consent. Talis makes no representation, undertakes no duty and accepts no responsibility to any third party who may use or rely upon this document or the information.</small></p>	<p>LOCALITY</p> <p>0 100 200 300 400 km</p>	<p>SITE LOCALITY</p> <p>Roe Gold Project</p> <p>S38 Referral Supporting Document</p> <p>Ramelius Resources</p> <p>Prepared: E Jackson Reviewed: L Carlsson Project: TE24094 Revision: A Figure 1-1 Date: 11/02/2026</p> <p>Scale @ A3: 1:700,000 Coordinate System: GDA2020 MGA Zone 51</p>
--	--	---



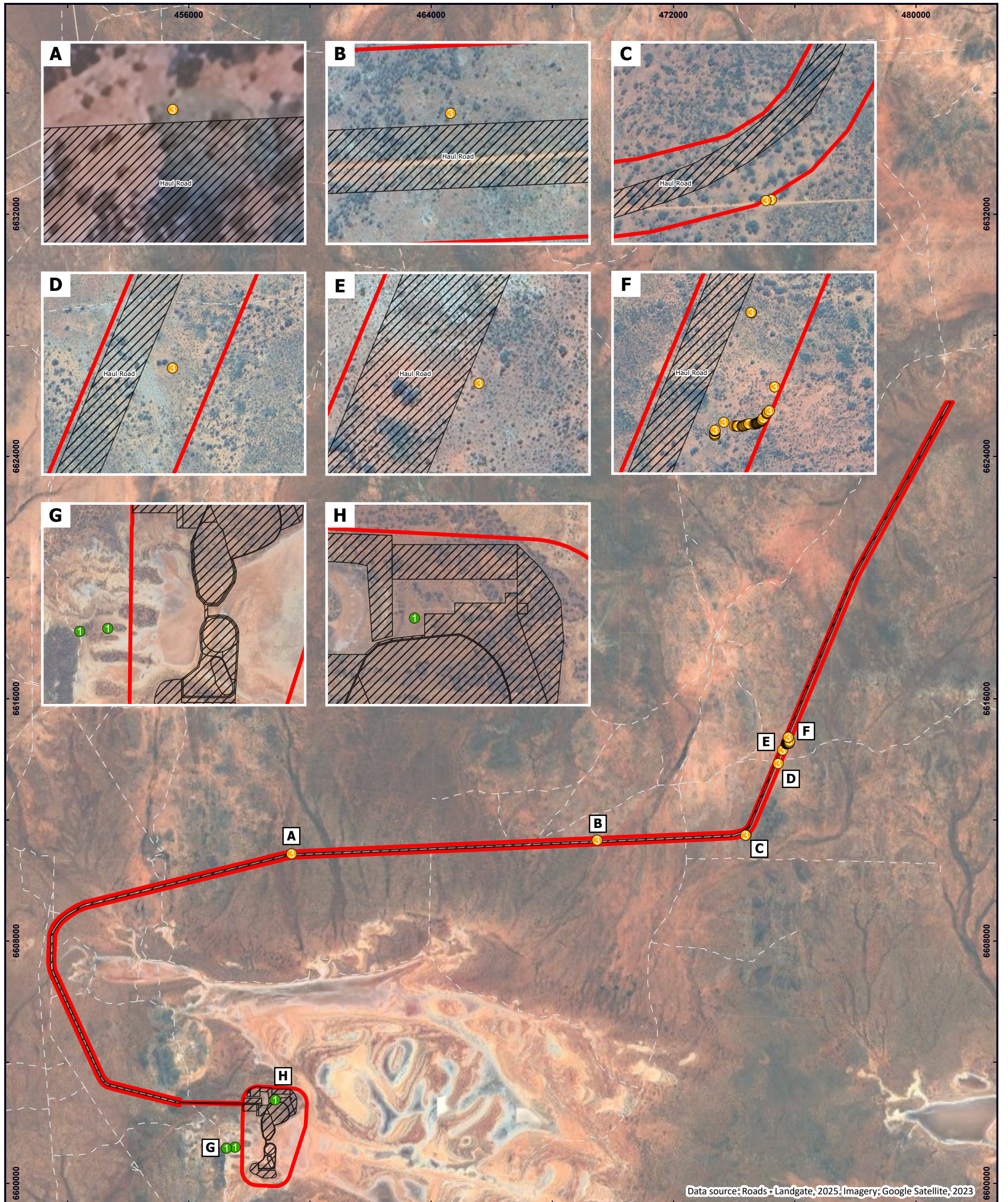
Data source: Roads - Landgate, 2025; Tenure - DMES, 2025; Imagery: Google Satellite, 2023

<p>LEGEND</p> <ul style="list-style-type: none"> Activity Envelope Mining Tenements <p>Western Australian Roads</p> <ul style="list-style-type: none"> Minor Road Other <p style="font-size: 8px; margin-top: 10px;">© Talis Consultants Pty Ltd ("Talis"). Copyright in the drawings, information and data recorded in this document ("the information") is the property of Talis. This document and the information are solely for the use of the authorised recipient and this document may not be used, transferred or reproduced in whole or part for any purpose other than that which it is supplied by Talis without written consent. Talis makes no representation, undertakes no duty and accepts no responsibility to any third party who may use or rely upon this document or the information.</p>	<p>LOCALITY</p> <p style="font-size: 8px; margin-top: 5px;">0 100 200 300 400 km</p>	<p style="text-align: right;">PROJECT TENURE</p> <p style="text-align: right;">Roe Gold Project</p> <p style="text-align: right;">S38 Referral Supporting Document</p> <p style="text-align: right;">Ramelius Resources</p> <div style="display: flex; justify-content: space-between; align-items: center;"> <div style="text-align: center;"> <p style="font-size: 8px;">Scale @ A3: 1:150,000 Coordinate System: GDA2020 MGA Zone 51</p> </div> <div style="border: 1px solid black; padding: 2px;"> <p>Prepared: E Jackson</p> <p>Reviewed: L Carlsson</p> <p>Project: TE24094</p> <p>Revision: A Figure 2-1</p> <p>Date: 11/02/2026</p> </div> <div style="text-align: center;"> </div> </div>
---	---	--



Data source: Roads - Landgate, 2025; Imagery: Google Satellite, 2023

LEGEND Activity Envelope Site Layout Transport or Service Infrastructure Corridor Laydown or Hardstand Area Topsoil Stockpile Mine Operational Area Magazine Other Cleared Land Water Management Structures Waste Rock Landform Mining Void		LOCALITY 	PROPOSED SITE LAYOUT Roe Gold Project S38 Referral Supporting Document Ramelius Resources Scale @ A3: 1:11,000 Coordinate System: GDA2020 MGA Zone 51 Prepared: E Jackson Reviewed: V Mugabe Project: TE24094 Revision: B Figure 2-5 Date: 11/02/2026
--	--	-------------------------	--



Data source: Roads - Landgate, 2025, Imagery: Google Satellite, 2023

LEGEND Activity Envelope Site Layout Conservation Significant Flora (Botanica, 2025) Calandrinia quartzitica (P1) Eremophila arachnoides subsp. tenera (P3)		Western Australian Roads Minor Road Other		LOCALITY 		CONSERVATION SIGNIFICANT FLORA Roe Gold Project S38 Referral Supporting Document Ramelius Resources	
© Talis Consultants Pty Ltd ("Talis"). Copyright in the drawings, information and data recorded in this document ("the information") is the property of Talis. This document and the information are solely for the use of the authorised recipient and this document may not be used, transferred or reproduced in whole or part for any purpose other than that which it is supplied by Talis without written consent. Talis makes no representation, undertakes no duty and accepts no responsibility to any third party who may use or rely upon this document or the information.		Scale @ A3: 1:120,000 Coordinate System: GDA2020 MGA Zone 51		Prepared: E Jackson Reviewed: V Mugabe Project: TE24094 Revision: A Date: 11/02/2026			