

# Port Hedland Zone 5 Bypass Channel Project

## Proposal Content Document

**Table 1:** General proposal content description

<b>Proposal title</b>	Port Hedland Zone 5 Bypass Channel Project
<b>Proponent name</b>	Pilbara Ports
<b>Short description</b>	The Proposal is for the capital dredging of a bypass navigation channel to the east of (what is known as) Zone 5 of the existing shipping channel within the Port of Port Hedland. The Proposal is a strategic marine risk-mitigation project intended to maintain vessel transit at an acceptable reduced capacity, should a grounding incident occur in Zone 5 of the channel. Key construction elements of the Proposal include dredging of up to 800,000 m <sup>3</sup> of seabed material within a total disturbance footprint of 162 ha (63 ha in WA State waters) and disposal of dredge material to an approved spoil ground located within Commonwealth (port) waters.

**Table 2:** Proposal content elements

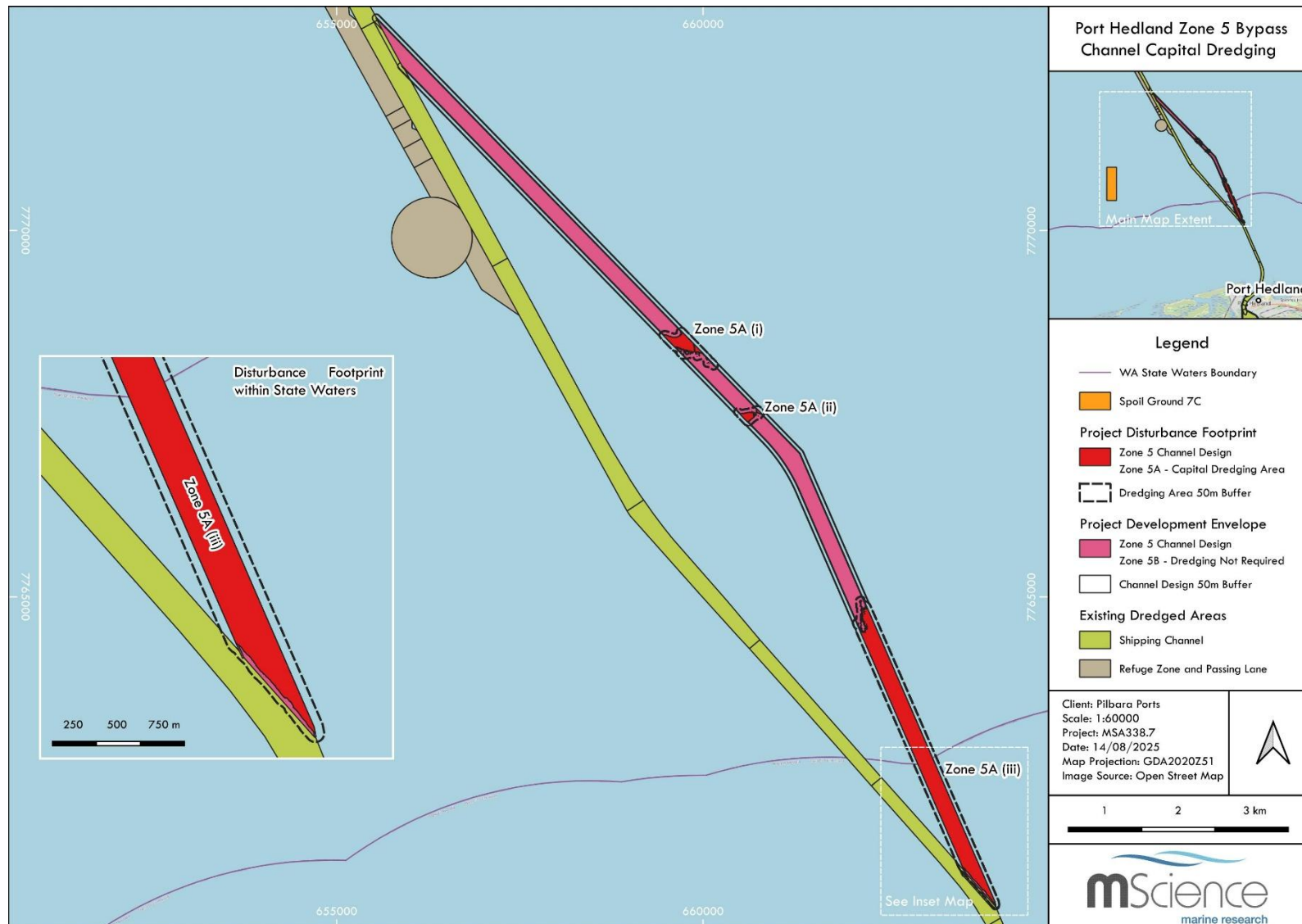
<b>Proposal element</b>	<b>Location / description</b>	<b>Maximum extent, capacity or range</b>
<b>Physical elements</b>		
Navigation channel	Figure 1	432 ha navigation channel (incl 50 m buffer) to design depth of – 11.5 m Chart Datum (plus 1.0 m of over-dredge).  Of which 63 ha is within State waters.
Sub area within established Spoil Ground 7	Figure 2	282 ha area located in Commonwealth waters within established Spoil Ground 7. Sub area termed SG7C.
<b>Construction elements</b>		
Capital dredging	Figure 1	Up to 800,000 m <sup>3</sup> (including up to 1.0 m of over-dredge) of capital dredging will be undertaken using a trailing suction hopper dredge <sup>1</sup> within a total disturbance footprint of 162 ha (63 ha in State waters)

<sup>1</sup> Where spots of harder material are encountered, it is possible that Pilbara Ports will remove the material using alternative dredging methods (e.g. cutter suction dredge)

Proposal element	Location / description	Maximum extent, capacity or range
		and 98 ha in Commonwealth waters) and development envelope of 432 ha (63 ha in State waters and 369 ha in Commonwealth waters).
Disposal of dredged material	Figure 2	Dredge spoil to be placed within Spoil Ground 7 282 ha sub area C (SG7C) located within Commonwealth (Port) waters.
<b>Operational elements</b>		
Ongoing maintenance dredging	Figure 1	On an 'as required' basis, with the activity covered within Pilbara Ports 5-year SDP for maintenance dredging (SD2022/4041)
<b>Proposal elements with greenhouse gas emissions</b>		
Construction elements:		
Scope 1	Total GHG emissions from dredging plant associated with the Project is estimated to be less than 100,000 t CO2-e over the capital dredging program.	
Scope 2	Nil	
Scope 3	Nil	
Operation elements:		
Scope 1	Total GHG emissions from future maintenance dredging of the navigation channel is estimated to be less than 100,000 t CO2-e over each maintenance campaign. Future maintenance dredging requirements for this area will be addressed by Pilbara Ports under a separate application to incorporate this area within Pilbara Ports existing Sea Dumping Permit for maintenance dredging.	
Scope 2	Nil	
Scope 3	Nil	
<b>Rehabilitation</b>		
N/A		
<b>Commissioning</b>		
N/A		
<b>Decommissioning</b>		
N/A		

<b>Proposal element</b>	<b>Location / description</b>	<b>Maximum extent, capacity or range</b>
<b>Other elements which affect extent of effects on the environment</b>		
Proposal time*	Maximum project life	50 Years
	Construction phase	5 Weeks
	Operations phase	50 Years
	Decommissioning phase	N/A

*\* Proponents should only provide realistic timeframes to avoid unnecessary change to proposal applications at referral (section 38C), assessment (section 43A) or post assessment (section 45C).*



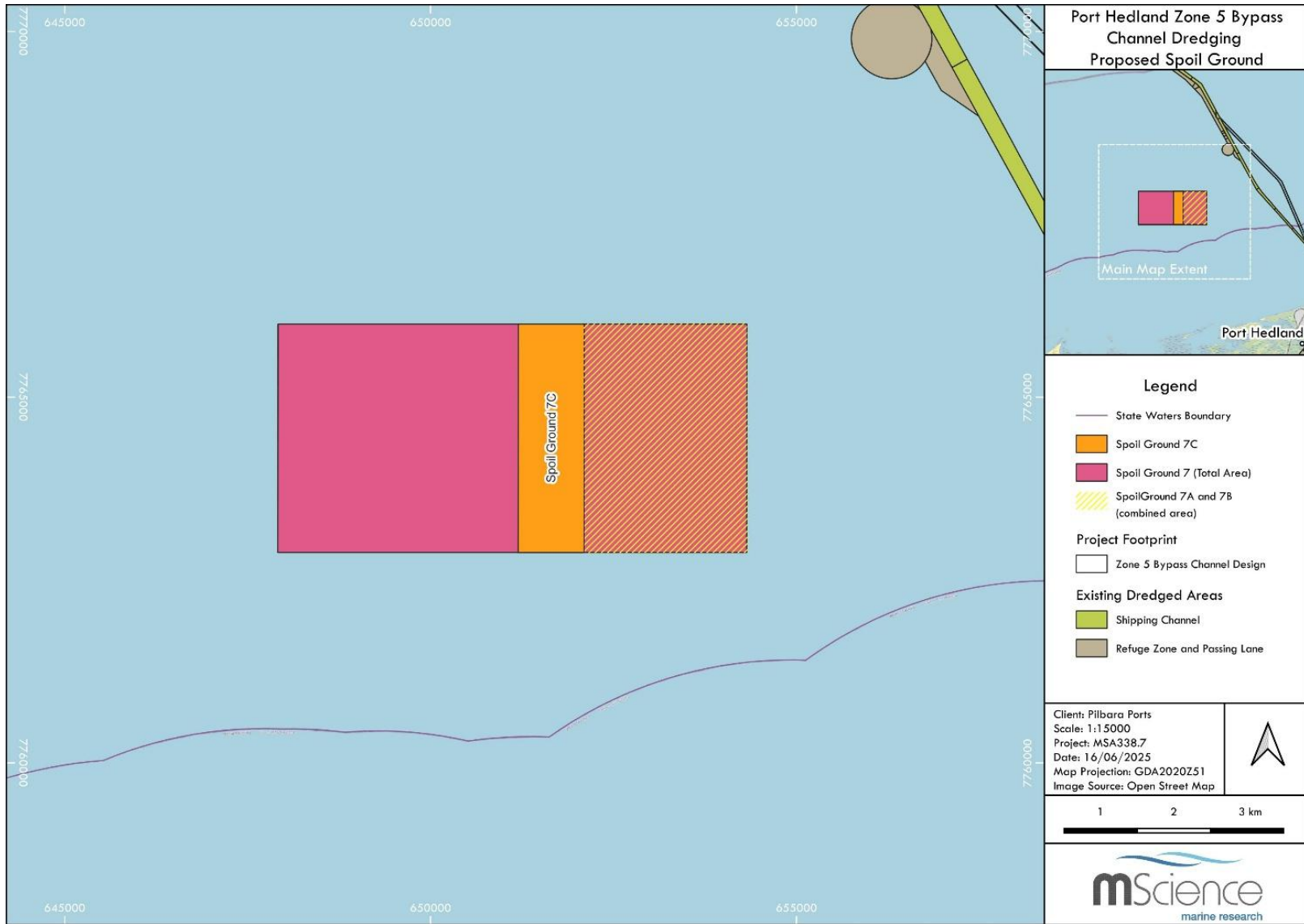


Figure 2. Spoil ground location