

Template

Proposal Content Document

Table 1: General proposal content description

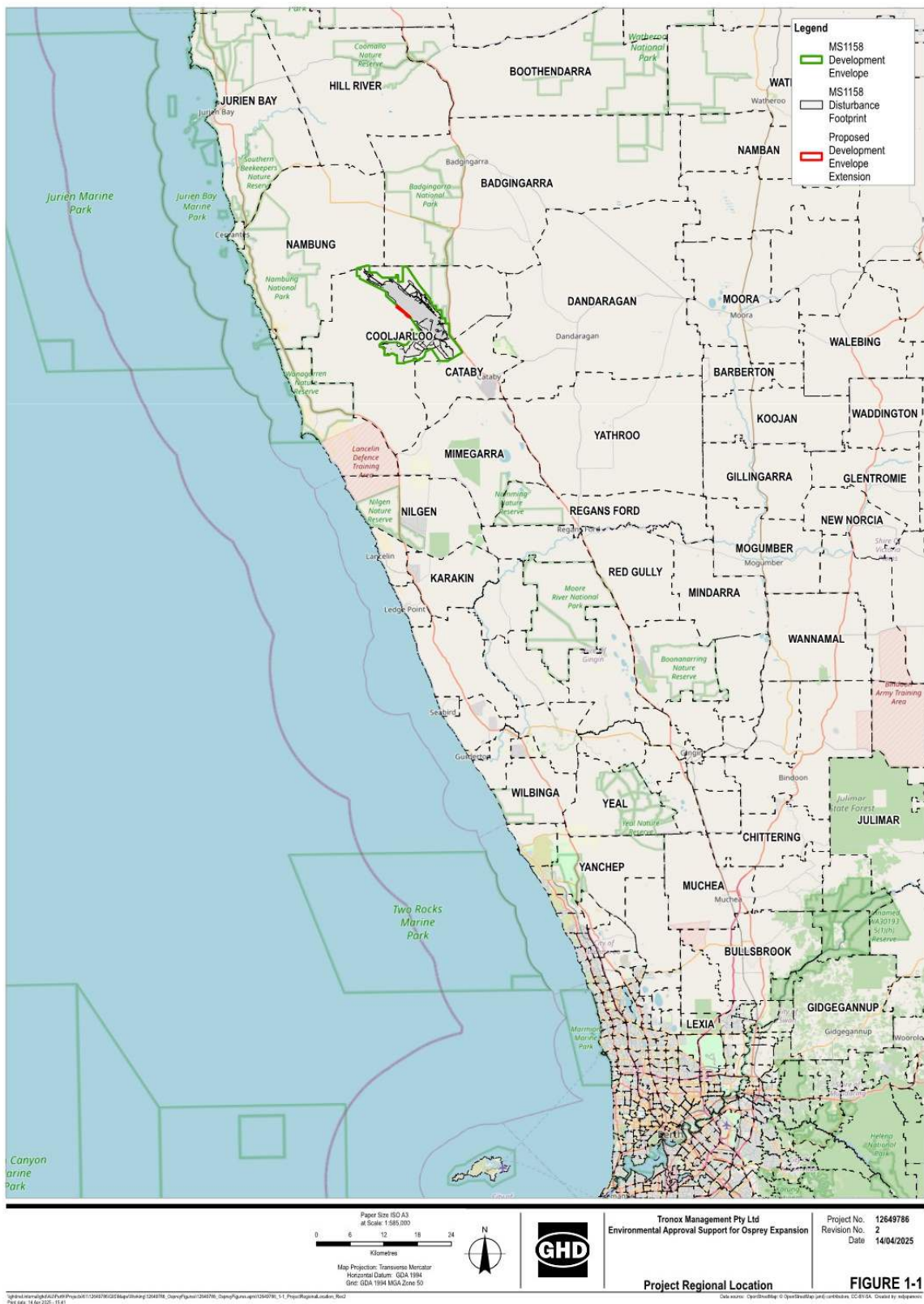
Proposal title	Osprey Expansion
Proponent name	Tronox Management Pty Ltd
Short description	<p>Tronox is proposing to expand the existing Cooljarloo Mineral Sands Mine by developing a satellite pit named Osprey. The Cooljarloo Mine was approved under the EP Act in 1988 (Statement 37) and commenced operation in 1989. Four additional expansions have been approved since commencement (2000, 2007, 2014, 2021) with the overall MS1138 Development Envelope totalling 12,375 hectares (ha) (Figure 1).</p> <p>The Osprey Expansion (Proposed Development Envelope) has a Disturbance Footprint of 61 ha, representing an increase in the existing project footprint by 1%. The Osprey satellite pit allows an additional 12-18 months mining, after which mining will return to the existing Cooljarloo Mine.</p>

Table 2: Proposal content elements

Proposal element	Location / description	Existing proposal extent, capacity or range	Proposal max extent, capacity or range	Combined max extent, capacity or range
Physical elements				
Mine and associated infrastructure	Figure 2	Up to 7,700 ha disturbance, including clearing of 6,905 ha native vegetation and 795 ha of pasture within 12,375 ha development envelope.	Additional disturbance footprint of 61 ha consisting of up to 59.14 ha of vegetation clearing and 1.86 ha cleared areas.	Up to 7,761 ha disturbance, including clearing of 6,964.14 ha native vegetation and 795.86 ha of pasture within 12,436 ha disturbance envelope.
Construction elements				
Vegetation Clearing	Figure 2	Clearing of 6,905 ha native vegetation	Additional 59.14 ha of vegetation clearing	Clearing of up to 6,964.14 ha native vegetation
Operation elements:				

Proposal element	Location / description	Existing proposal extent, capacity or range	Proposal max extent, capacity or range	Combined max extent, capacity or range
Mining	Figure 2	Dredge and dry mining (up to 26,000 kilo tonnes per annum (ktpa)) with progressive backfill and rehabilitation	No change	Dredge and dry mining (up to 26,000 ktpa) with progressive backfill and rehabilitation
Heavy Mineral Concentrate (HMC) production	Figure 2	Production of up to 400 ktpa of HMC	No change	Production of up to 400 ktpa of HMC
HMC storage	Figure 2	Stockpiling of HMC prior to haulage for processing	No change	Stockpiling of HMC prior to haulage for processing
Groundwater abstraction	Yarragadee and/or Superficial Aquifers within the Jurien and Gingin Areas	Abstraction of up to 19.58 GL/yr from one or more borefields	No change	Abstraction of up to 19.58 GL/yr from one or more borefields
Proposal elements with greenhouse gas emissions				
Construction				
Scope 1		Less than 10,000 tonnes CO ₂ -e/yr inclusive of vegetation clearing	No change	Less than 10,000 tonnes CO ₂ -e/yr inclusive of vegetation clearing
Scope 2		0	No change	0
Scope 3		0	No change	0
Operational				
Scope 1		Less than 100,000 tonnes CO ₂ -e/yr	No change	Less than 100,000 tonnes CO ₂ -e/yr
Scope 2		Electricity use Approximately 35,600 tonnes CO ₂ -e/yr	No change	Electricity use Approximately 35,600 tonnes CO ₂ -e/yr

Proposal element	Location / description	Existing proposal extent, capacity or range	Proposal max extent, capacity or range	Combined max extent, capacity or range
Scope 3		0	No change	0
Rehabilitation				
Progressive rehabilitation will be undertaken throughout the life of mine where practicable. This will include back-filling of mine pits and revegetation with local flora. Rehabilitation will be undertaken to meet the following environmental objective: "restoration of native vegetation communities that adequately represent the vegetation types that have been cleared".				
Commissioning				
No commissioning involved with this proposal as this has already occurred within the Cooljarloo Mine lease.				
Decommissioning				
Decommissioning phase will be implemented within 1-3 years of cessation of operations.				
Other elements which affect extent of effects on the environment				
Proposal timeframe	Maximum project life	48 years	1 year	49 years
	Construction phase	6 months	No change	6 months
	Operation phase	48 years	1 year	49 years
	Decommissioning phase	3 years	No change	3 years



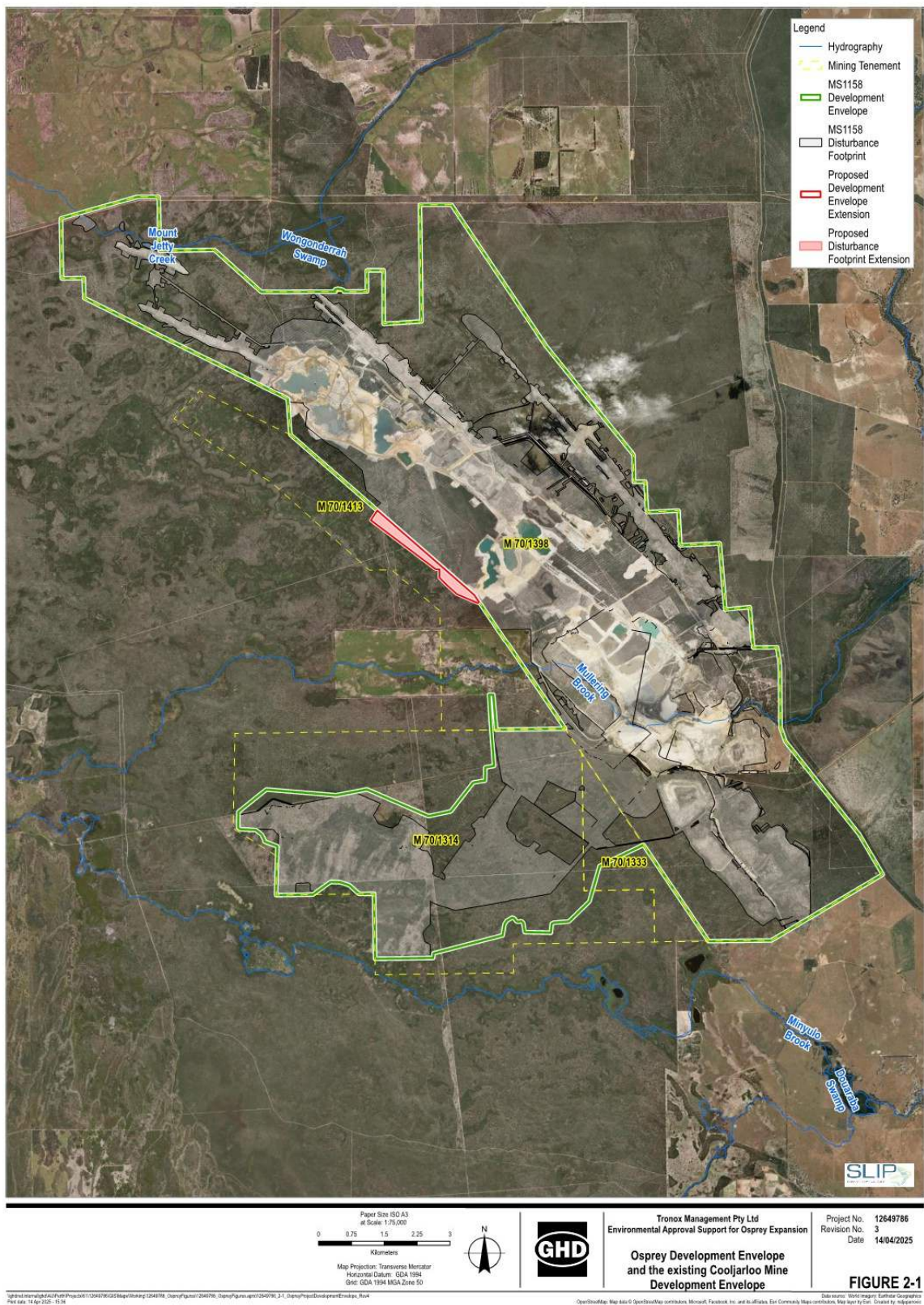


Figure 2. Proposal Disturbance Envelope and the existing Cooljarloo Mine Development Envelope