

Proposal Content Document

Kalgoorlie Regional Renewable Energy Project

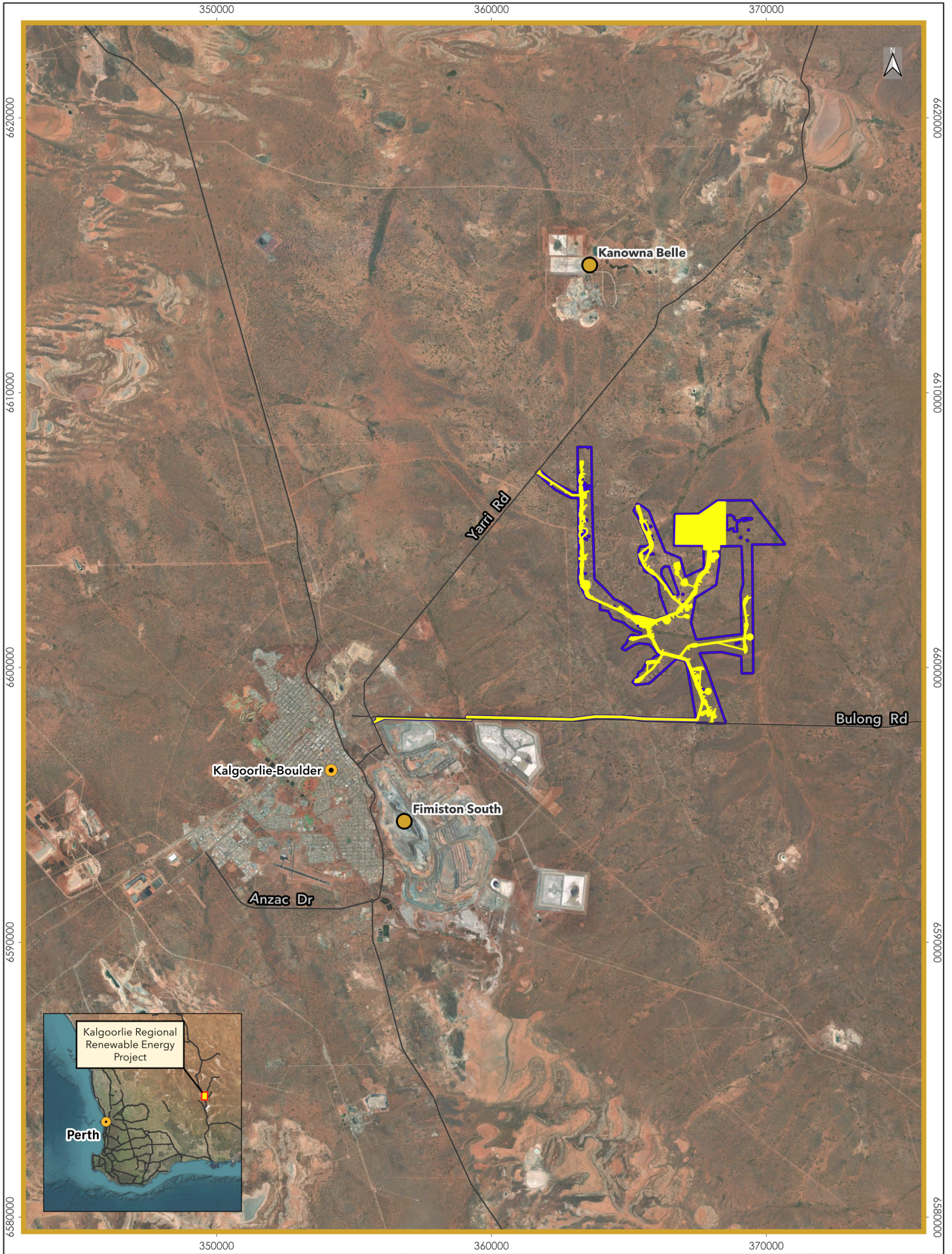
Table PCD-1: General proposal content description

| Proposal Title | |
|---|---|
| Kalgoorlie Regional Renewable Energy Project | |
| Proponent Name | Northern Star (EGP) Pty Ltd |
| Short Description | Development of a wind and solar farm approximately 10 km northeast of the City of Kalgoorlie-Boulder (Figure 1-1). The Proposal will involve the construction and operation of up to 32 wind turbines, a solar farm, a battery energy storage system and ancillary infrastructure. An underground transmission line will be constructed to connect with infrastructure at KCGM. |

Table PCD-2: Proposal content elements

| Proposal Element | Location / Description | Maximum Extent, Capacity or Range |
|--|-------------------------------|---|
| Physical elements | | |
| Development Envelope comprising of the following in the Indicative Footprint: <ul style="list-style-type: none"> • Wind turbines • Wind turbine foundations, hardstands • Access tracks • Meteorological masts • Communication towers • Cables and surface water management infrastructure • Utilities. • Solar Panels including foundations • Battery Energy Storage System (BESS) • Sub-station and offices. • Transmission lines | Figure 2-1 | 652 ha of disturbance within a 2,312 ha Development Envelope. |
| Construction elements | | |
| Temporary construction infrastructure including: <ul style="list-style-type: none"> • Borrow areas • Construction compound and laydown areas • Stockpile areas • External site access • Internal access roads • Office and Utilities. • Temporary power generation. • Water Supply • Concrete batching plant • Crushing and screening | Figure 2-1 | 229 ha of disturbance within the 2,312 ha Development Envelope. |
| <ul style="list-style-type: none"> • Transport of turbines and associated infrastructure along existing road network | Figure 2-1 | Clearing of no more than 0.1 ha of native vegetation and weeds within the Transport Corridor. |

| Proposal Element | Location / Description | Maximum Extent, Capacity or Range |
|---|----------------------------------|---|
| Operational elements | | |
| Wind energy production | Figure 2-1 | 32 Turbines with a production capacity of 256MW _{AC} |
| Solar farm energy production | Figure 2-1 | 110 MW _{AC} . |
| Battery storage system | Figure 2-1 | Design capacity 140MW/300 MWh. |
| Proposal elements with greenhouse gas emissions | | |
| Construction | | |
| Scope 1 | 55,507 tCO ₂ -e | |
| Scope 2 | 0 tCO ₂ -e | |
| Scope 3 | 70,256 tCO ₂ -e | |
| Operation | | |
| Scope 1 | 604 tCO ₂ -e per year | |
| Scope 2 | 0 tCO ₂ -e per year | |
| Scope 3 | 271 tCO ₂ -e per year | |
| Rehabilitation | | |
| After construction period, about 229 ha of disturbance will be progressively rehabilitated. The remain 423 ha of disturbance will be rehabilitated following decommissioning. Rehabilitation will be implemented in accordance with a Mine Closure Plan approved under the <i>Mining Act 1978</i> . | | |
| Commissioning | | |
| For short periods of time, turbine collector groups will be operated. | | |
| Decommissioning | | |
| Decommissioning will be implemented in accordance with a Mine Closure Plan approved under the <i>Mining Act 1978</i> . The closure strategy is expected to involve either decommissioning the facility permanently; or removing the old infrastructure and seeking to replace it with a new upgraded model. | | |
| Other element which affect extent of effects on environment | | |
| Proposal time | Maximum project life | 44 years |
| | Construction | 24 months |
| | Commissioning | 6 months |
| | Operations | 30 years |
| | Decommissioning | 18 months |
| | Closure | 10 years |

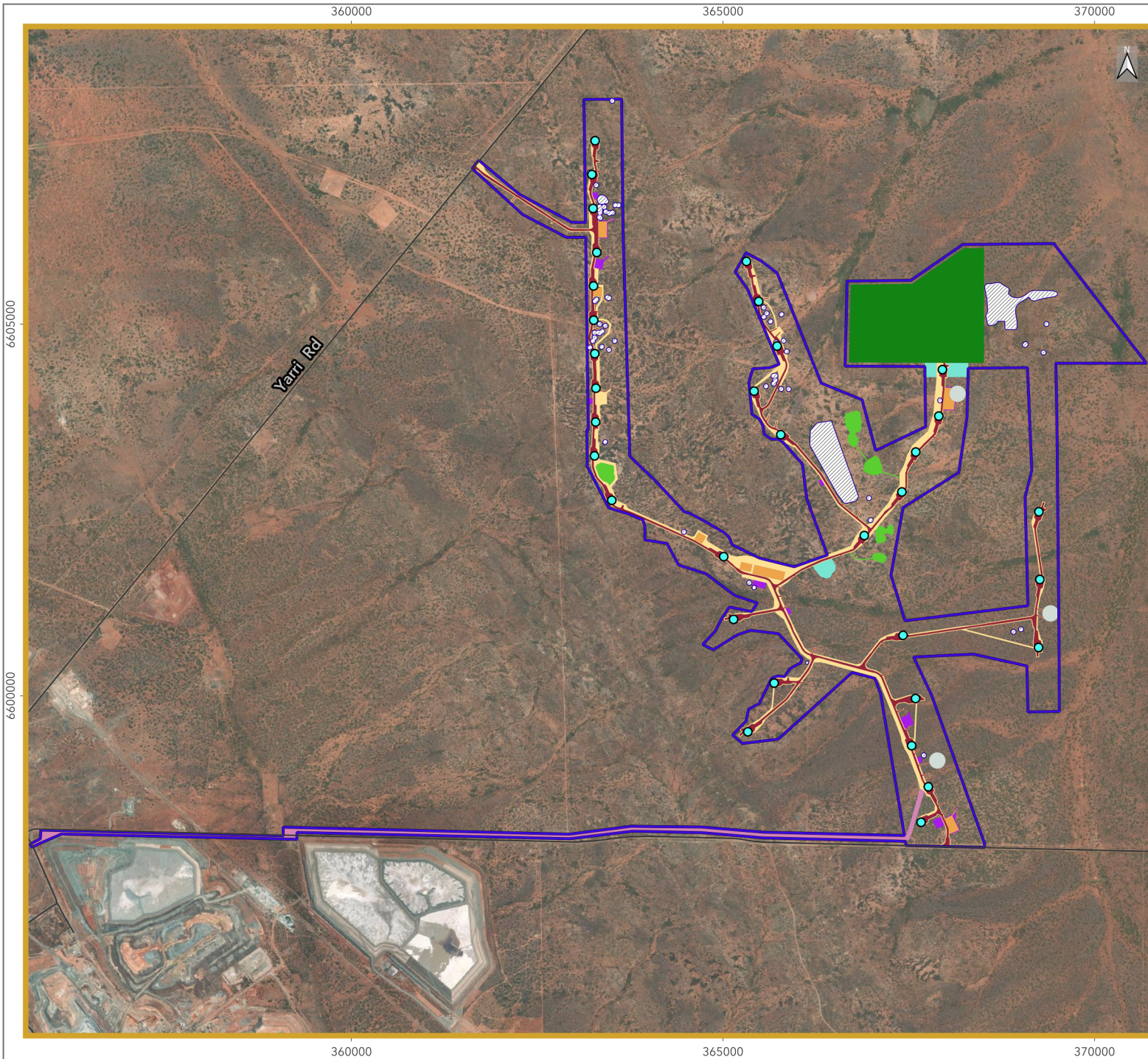


Regional Location

Figure 1-1

- ▭ Development Envelope
- Town/City
- Roads
- ▭ Indicative Footprint
- Northern Star Resources Operations

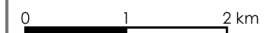




Indicative Layout

Figure 2-1

- Development Envelope
- Roads
- Exclusion Zones
- Indicative Footprint**
- Laydown
- Masts
- Solar
- Wind Turbine and Supporting Infrastructure
- Borrow Pit
- Laydown
- Supporting Infrastructure/Borrow
- Temporary Infrastructure Construction
- Transmission Line
- Potential Wind Turbine Locations



Scale: 75000
 Date: 31/10/2025
 Author: McDonald, Lachlan R.

Coordinate System:
 GDA2020 / MGA zone 51

