

Key Characteristics of Gogo Station Surface Irrigation Proposal

Table 1: Summary of the Proposal

Proposal Title	Gogo Station
Proponent Name	Gogo Station Pty Ltd
Short Description	Development of up to 8,335 ha of native grassland, to produce 4,335ha of cropland with associated infrastructure and buffer areas.

Table 2: Location and Proposed Extent of Physical and Operational Elements

Element	Location	Proposed Extent
Physical Elements		
8,335ha of irrigated cropland and associated infrastructure	Figure 1; Figure 2; Figure 3	Clearing of up to 8,335ha of native vegetation within the development envelope. Development infrastructure includes (but is not limited to): <ul style="list-style-type: none"> • 4,335ha of irrigated cropland (excluding centre pivot irrigation fields) • Water storages • Water supply channels • Levees • Internal roads
Operational Elements		
Floodplain harvesting*	N/A	Harvesting entitlement of 50,000 ML per annum from a gravity offtake channel, to take water only when the height of flow in Margaret River is approximately 3m or above base flow level.
Internal runoff capture*	N/A	Exemption to permit capture of an estimated 2.5ML/ha of water from developed land as a base volume for stormwater/tailwater capture
Continuous accounting approach*	N/A	Allow capture of 200-400% of annual entitlements in any one year, such that capture in a single year will not exceed entitlements.

*Applications have been submitted to the Department of Water for appropriate water licences.

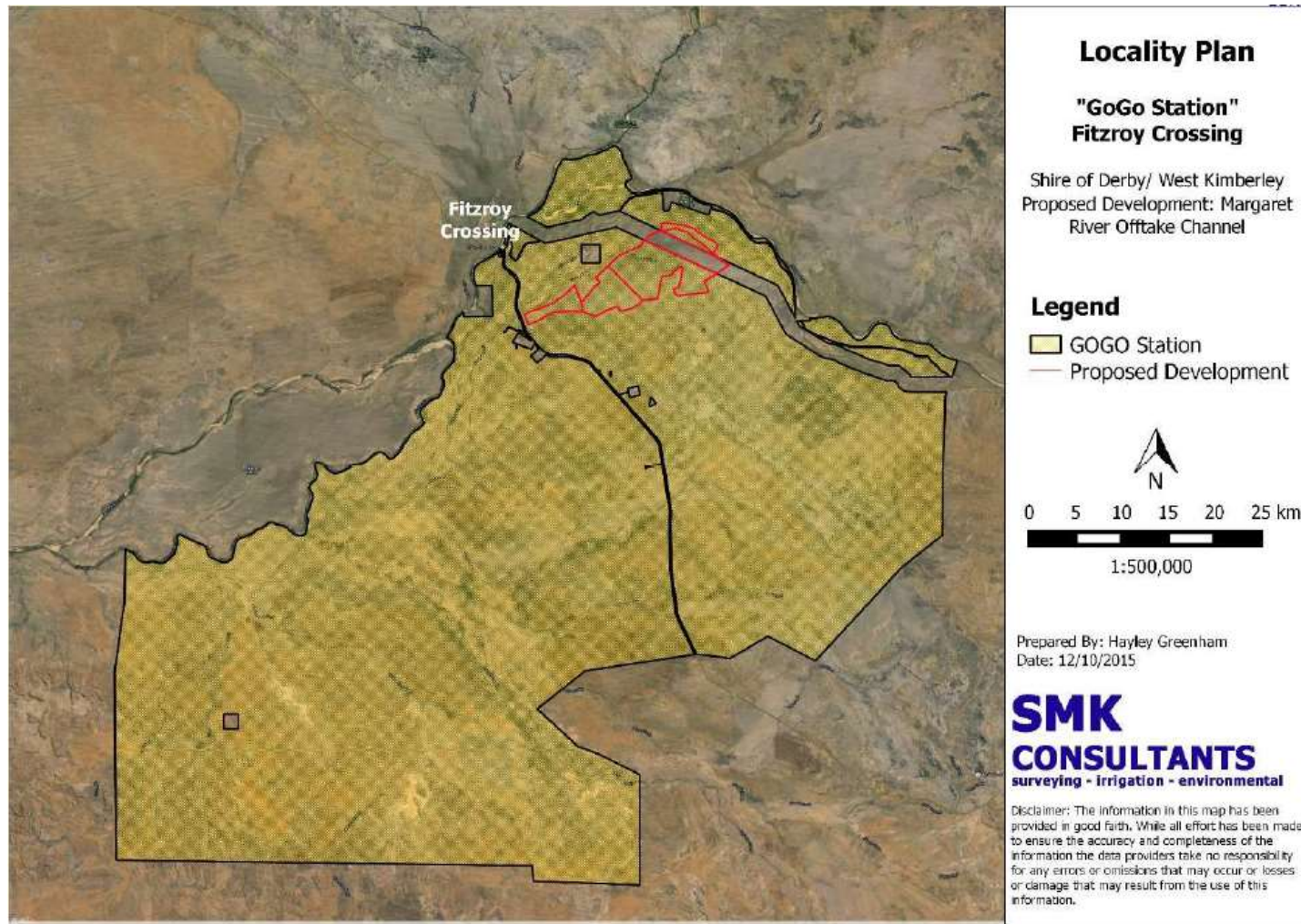


Figure 1: Proposed Development Locality Plan

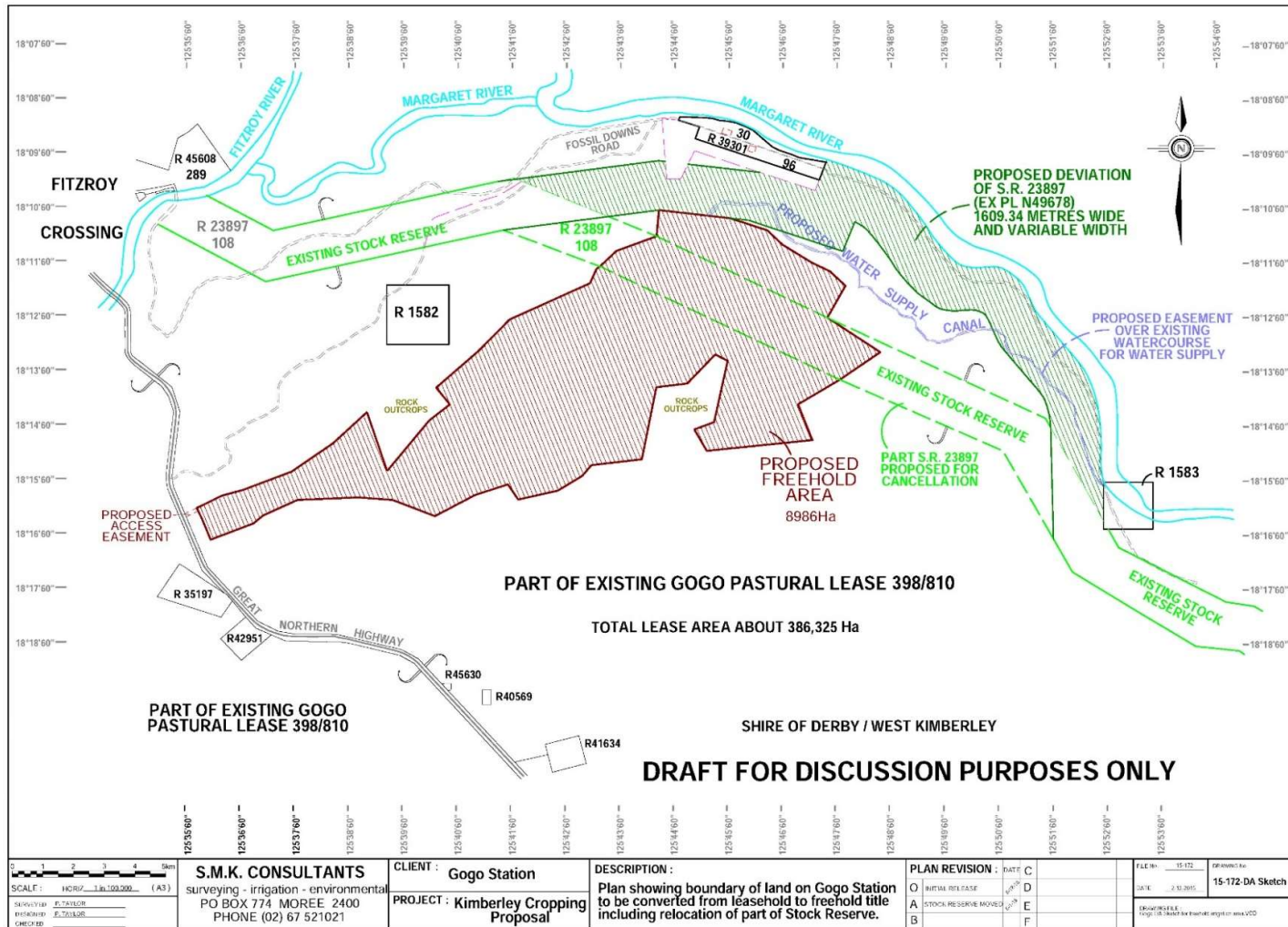


Figure 2: Proposed Development Layout Overview

