

Flora and Vegetation Survey- Kennedy Bay 2024

The Flora and Vegetation within the Kennedy Bay Construction Clearing Footprint was assessed on the 2nd October 2024. The total survey area is approximately 0.16 hectares.

The vegetation communities and condition within the Construction Clearing Footprint with a buffer of 10m on either side were assessed to determine if the site contains the same vegetation communities and conditions as previously recorded in the area in 2020 by Focused Vision Consulting. Quadrat data was compared to PK07, PK08, PK09 and PK10 from the *Flora and Vegetation Assessment, Port Kennedy August 2021* report (FVC).

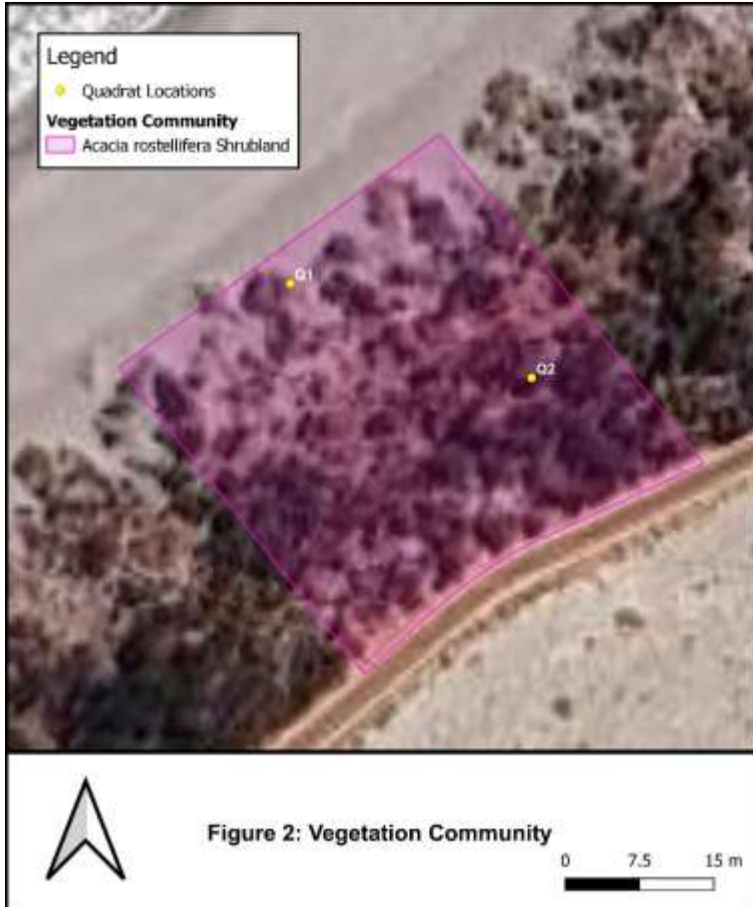
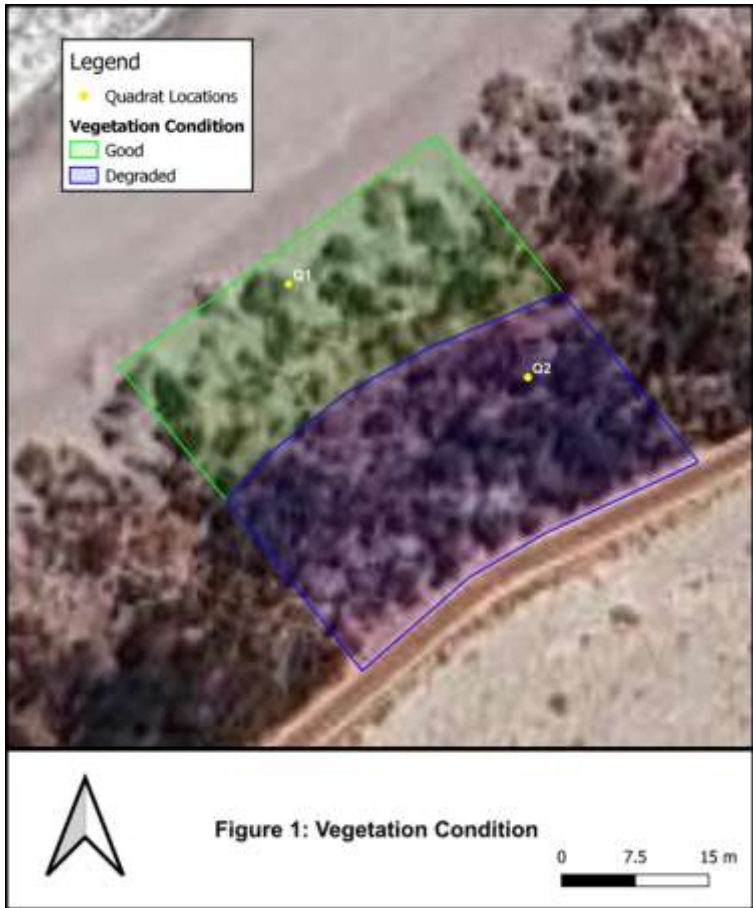
The survey results suggested that the vegetation condition of the site has deteriorated since last surveyed in 2020. Vegetation condition mapping is provided in **Figure 1**.

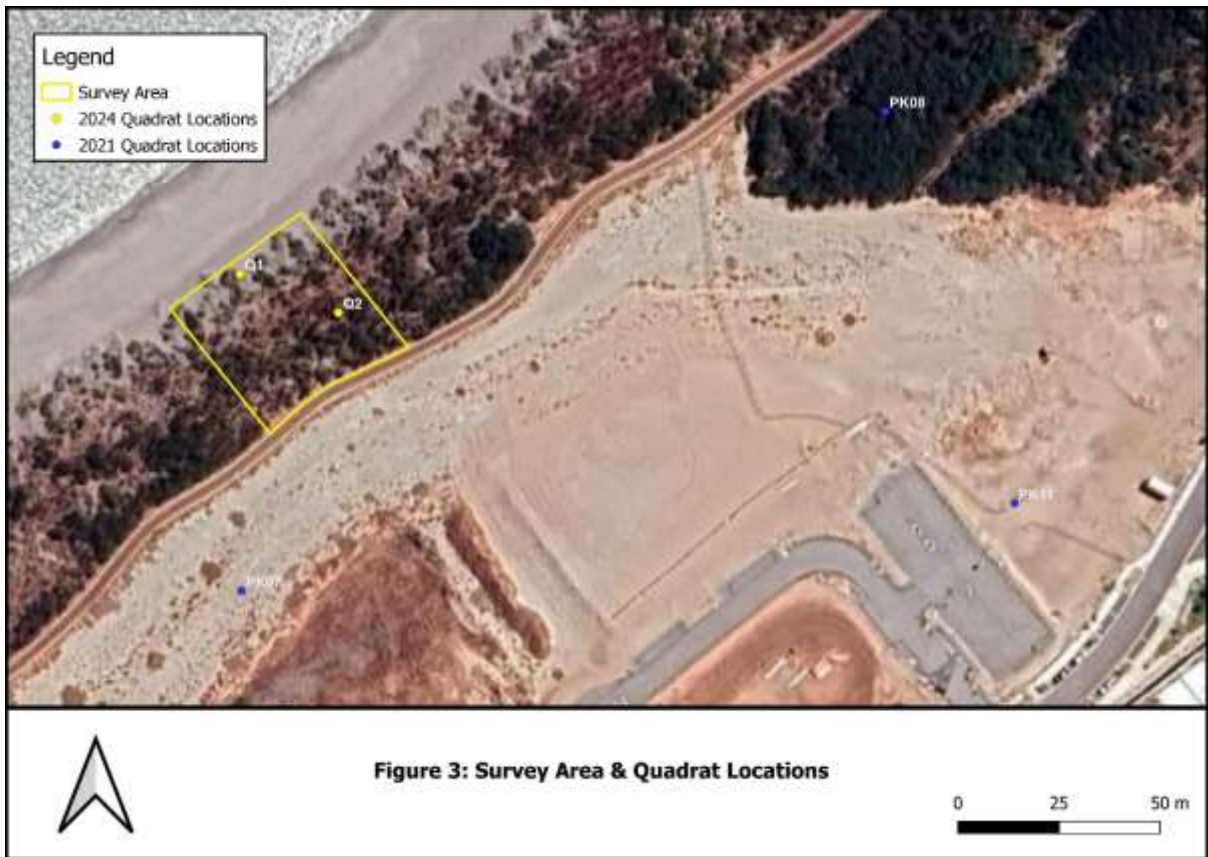
The assessment of the vegetation confirmed the vegetation community recorded within the Construction Clearing Footprint is the same vegetation community recorded previously in 2020.

The vegetation community is described as **Acacia rostellifera Shrubland**:

Shrubland of *Acacia rostellifera* over sparse native, low shrubs and introduced herbs and grasses.

Vegetation community mapping is provided on **Figure 2**. Quadrat locations from this survey and the survey undertaken in 2020 are shown on **Figure 3**. Quadrat data is available below.





Del Botanics

FIELD SHEET – FLORA AND VEGETATION SURVEY

Job Code: Kennedy Bay	Date: 02/10/2024	Site: Q1
GPS Datum: (50) 380781.60 m E 6418385.01 m S	Topography: Coastal Dunes	Litter cover: 2% twigs, 20 % leaves 0% logs
Age since fire: >10 yrs	Disturbance: Hi Med Lo	Soils: Sand white/grey
Vegetation Description: <i>Acacia rostellifera</i> shrubland		
Vegetation Condition: Good		
Observations:		



Coll No.	Taxon	Ht (cm)	% Alive	% Dead	% Cover
Top	<i>Acacia rostellifera</i>	100	90	20	10
Middle	<i>Olearia axillaris</i>	100	70	30	12
	<i>Scaevola crassifolia</i>	60	100		12
Bottom	<i>Spinifex longifolius</i>	80	100		12

SP1	<i>*Tetragonia decumbens</i>	30	100		7
	<i>*Bromus diandrus</i>	40	60	40	6
	<i>*Sonchus oleraceus</i>				
	<i>*Lolium rigidum</i>				
	<i>*Pelargonium capitatum</i>				
	<i>Carpobrotus virescens</i>				
	<i>*Lagurus ovatus</i>				
	<i>Senecio</i> sp				
	<i>*Asphodelus fistulosus</i>				
SP2	<i>*Cakile maritima</i>				
SP3	<i>*Corrigiola littoralis</i>				

Del Botanicis

FIELD SHEET – FLORA AND VEGETATION SURVEY

Job Code: Kennedy Bay	Date: 02/10/2024	Site: Q2
GPS Datum: (50) 380805.97 m E 6418375.50 m S	Topography: Coastal Dunes	Litter cover: 5% twigs, 20 % leaves 0% logs
Age since fire: >10 yrs	Disturbance: Hi Med Lo	Soils: Sand white/grey
Vegetation Description: <i>Acacia rostellifera</i> shrubland		
Vegetation Condition: Degraded		
Observations: High density of weed species		



Coll No.	Taxon	Ht (cm)	% Alive	% Dead	% Cover
Top	<i>Acacia rostellifera</i>	400	80	20	50
Middle					
Bottom	<i>*Euphorbia terracina</i>	40	100		7
	<i>Acanthocarpus preissii</i>	60	100		7
	<i>*Bromus diandrus</i>	40	100		80

	<i>*Sonchus oleraceus</i>				
	<i>*Lolium rigidum</i>				
	<i>*Fumaria capreolata</i>				
Sp3	<i>*Corrigiola littoralis</i>				
	<i>*Lagurus ovatus</i>				
	<i>Senecio sp</i>				
	<i>*Asphodelus fistulosus</i>				
SP2	<i>*Cakile maritima</i>				
	<i>Spyridium globulosum</i>				
SP1	<i>*Tetragonia decumbens</i>				
	<i>*Pelargonium capitatum</i>				
	<i>Spinifex longifolius</i>				
	<i>*Raphanus raphanistrum</i>				
Opp	<i>Acacia cyclops</i>				