

Gynatrix-1 Conventional Exploration Drilling Program

Proposal Content Document

Table 1: General proposal content description

Proposal title	Gynatrix-1 Conventional Exploration Drilling Program
Proponent name	AWE Perth Pty Ltd (AWE) <i>(wholly owned subsidiary of Mitsui & Co. Ltd. operating under the Mitsui E&P Australia Pty Ltd brand (MEPAU))</i>
Short description	<p>The Proposal is to undertake a conventional exploration drilling program located east-south-east of Dongara, Western Australia (WA). The Proposal includes the construction of a single deviated well, immediately adjacent to the Yordanogo Nature Reserve, and within MEPAU's Production Licence L1. The intent of the Proposal is to evaluate the gas-bearing potential of the Gynatrix prospect by measuring the properties of the Kingia Sandstone and High Cliff Sandstone formations.</p> <p>For a Development Envelope with a disturbance footprint of 5.2 ha, the Proposal will require clearing of <1.7 ha of native vegetation for the well site and access track construction. As the Proposal is targeting conventional resources, no hydraulic fracture stimulation is proposed.</p>

Table 2: Proposal content elements

Proposal element	Location / description	Maximum extent, capacity or range
Physical elements		
Well site	Figure 1	2.6 ha including well site firebreak. The well site will require clearing of ~1.3 ha of native vegetation.
Access track	Figure 1	0.6 ha The access track will require clearing of ~0.4 ha of native vegetation
Operational elements		
Water abstraction via bore	Figure 2	3 ML for the well via one groundwater extraction bore.
Drilling emergency flare pit	Figure 2	One drilling emergency flare pit on site.
Well test flare pit (success case only)	N/A	One well test flare pit on site. Firebreak of up to 2 ha around flare pit.

Mud sump	Figure 2	One mud sump on site. Total design holding capacity of ~4,134 m ³ (26,000 bbls).
Turkey's nest	Figure 2	One turkey's nest on site. Total design holding capacity of 668 m ³ (4,200 bbls).
Proposal elements with greenhouse gas emissions		
Construction elements:		
Scope 1	Site preparations - diesel emissions: ~54 tCO ₂ -e	
Scope 2	As the Proposal does not intend to import power from third parties, no Scope 2 emissions are expected.	
Scope 3	No Scope 3 emissions expected.	
Operation elements:		
Scope 1	<u>Diesel emissions:</u> Drilling operations: ~857 tCO ₂ -e Well testing operations: ~500 tCO ₂ -e <u>Flaring emissions (successful well evaluation case only):</u> Gas: <72,300 tCO ₂ -e (based on 14 days flaring)	
Scope 2	As the Proposal does not intend to import power from third parties, no Scope 2 emissions are expected.	
Scope 3	No Scope 3 emissions expected.	
Rehabilitation		
As required under the Petroleum and Geothermal Energy Resources (Environment) Regulations 2012, once all activities are complete, cleared areas that are not required to support the maintenance of infrastructure will be progressively rehabilitated to minimise rehabilitation legacy at the end of asset life. Topsoil is to be re-spread and rehabilitation sites actively monitored to ensure they meet required completion criteria. Specifically, completion criteria will be developed to ensure that rehabilitation is conducted to enable the long-term land use to be continued. These will be documented in the Environment Plan for acceptance by DMIRS.		
Commissioning		
The exploration drilling program is expected to commence between Q3 - Q4 2022.		
Decommissioning		
If the evaluation confirms the well is successful, the well site will be suspended and managed under a care and maintenance regime provided in the MEPAU Perth Basin Facilities Environment Plan [PB-HSE-PLN-00004] until the reinstated well site is handed over to the landowner.		

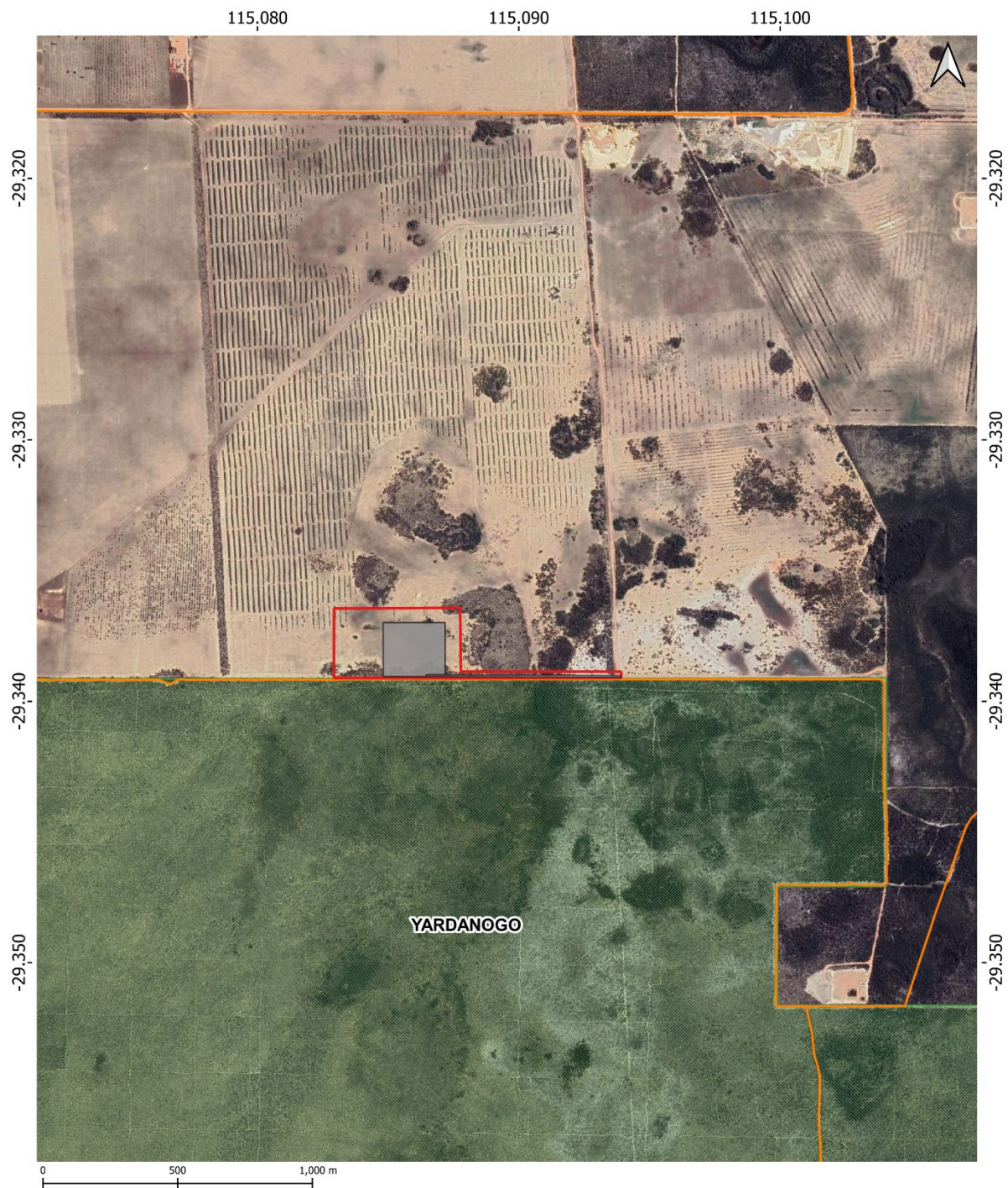
If the well evaluation confirms the well is not successful, the Gynatrix-1 well will be plugged back with cement as per a regulatory approved well decommissioning program. A Well Management Plan will be approved by DMIRS Resource and Environmental Compliance Division under the Petroleum and Geothermal Energy Resources (Resource Management and Administration) Regulations 2015 based on the actual results of the drilled well prior to commencement of the well decommissioning process. Cement plugs will be installed as per the future DMIRS approved Well Management Plan.

In the event that the well is decommissioned, once the site is reinstated, it will be handed back to the landowner in accordance with any relevant land access agreements. This Proposal will be closed out once the site is handed back to the landowner.

Other elements which affect extent of effects on the environment

Proposal time*	Maximum project life	<p>The project covers an exploration activity; therefore, the future of the project is subject to the outcomes of the activities.</p> <p>In the event of a success case, the exploration well will be suspended and enter a period of care and maintenance subject to future development under separate environmental approvals.</p> <p>The exploration activities themselves are anticipated to be completed within 3 - 4 months, beginning between Q3-Q4 2022.</p>
	Construction phase	<p>The construction of the well site and access track (site preparation activities) is expected to be completed in approximately 35 days.</p>
	Operations phase	<p>The operations phase of the activity includes drilling, well testing and well suspension. These activities are expected to take up to 60 days in total.</p> <p>In the event of a success case, the well will be suspended and enter a period of care and maintenance subject to future development under separate environmental approvals.</p> <p>If the well does not result in a resource discovery, it will enter the decommissioning phase.</p>
	Decommissioning phase	<p>Infrastructure to be maintained or reinstated should it no longer be required during the operations phase of the Proposal.</p> <p>Should the well be decommissioned following an unsuccessful evaluation, decommissioning activities are expected to take 10 - 15 days.</p> <p>This timeframe is dependent on success or dry hole case during well evaluation.</p>

* Proponents should only provide realistic timeframes to avoid unnecessary change to proposal applications at referral (section 38C), assessment (section 43A) or post assessment (section 45C).



Project: Gynatrix-1 Conventional Exploration Drilling Program
 Datum: GDA2020
 Base: Google satellite / OSM standard
 Revision Date: 04 March 2022

Legend

- Proposal Development Envelope
- Proposed Gynatrix-1 well site and access track
- Roads (WA dataset - LGATE-195)
- Legislated land - Yordanogo Nature Reserve

Figure 1: Well site location

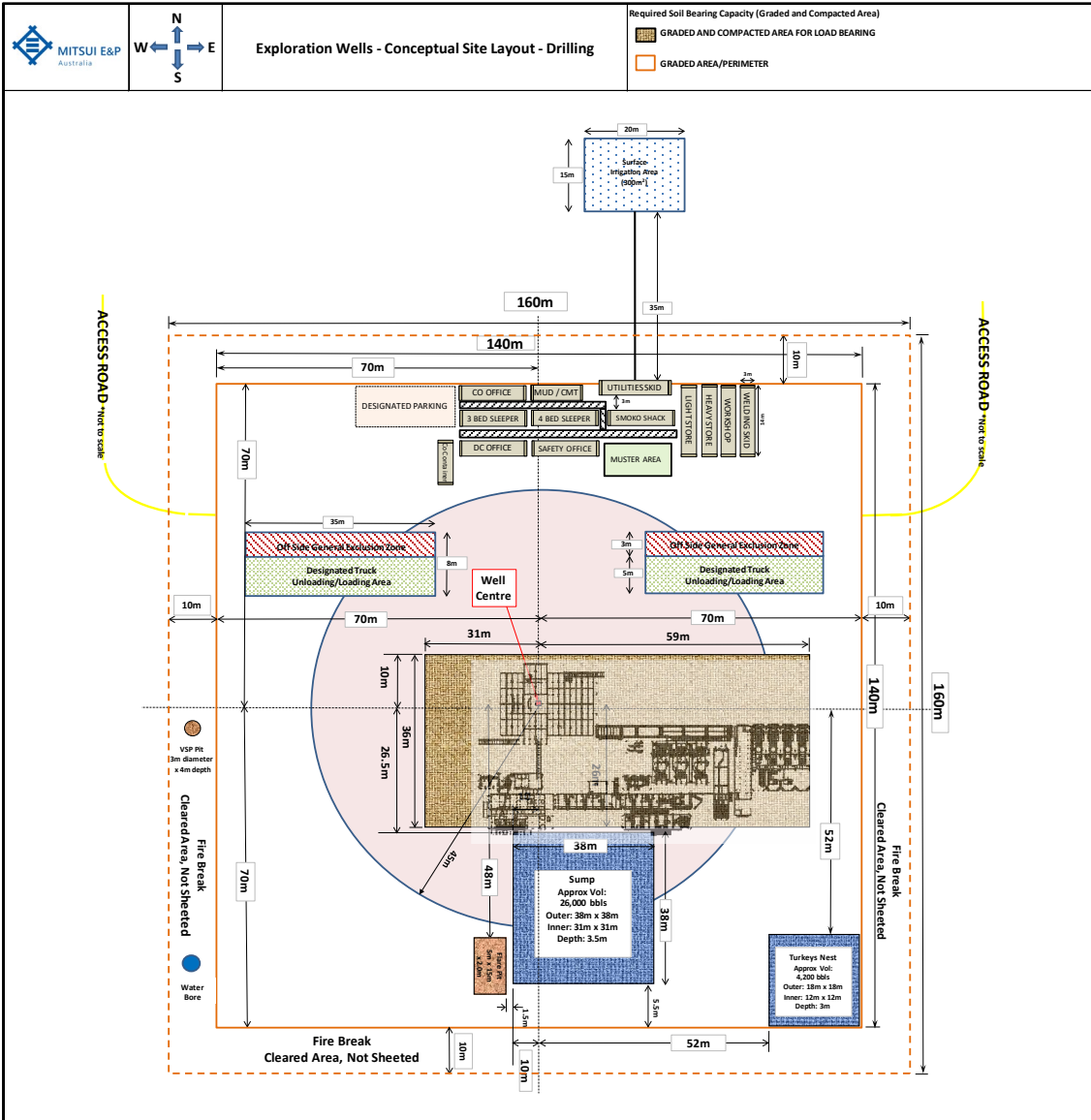


Figure 2: Conceptual site layout - drilling and completion