

Covalent Lithium

Proposal Content Document

Table 1: General proposal content description

Proposal title	Earl Grey Lithium Project – Life of Mine
Proponent name	Covalent Pty Ltd
Short description	<p>The Proposal is to develop a pegmatite-hosted lithium deposit at the abandoned Mt Holland Mine Site, in a Development Envelope of 3,996 ha.</p> <p>The Proposal involves new clearing of up to 1,885 ha of native vegetation, and use of existing cleared/disturbed land, infrastructure including a mine pit, waste rock landforms, tailings storage facility, processing plant, airstrip, accommodation village, water storage facilities, power generation infrastructure and associated infrastructure.</p>

Table 2: Proposal content elements

Proposal element	Location / description	Maximum extent, capacity or range
Physical elements		
Development Envelope	Figure 1	3,996 ha
Disturbance Footprint	Figure 2	2408 ha
Native Vegetation Clearing	Figure 3	Clearing of no more than 1,885 ha of native vegetation
Mine and associated infrastructure	Figure 3	Disturbance of up to 2,408 ha including use of existing cleared and/or disturbed land, within a Development Envelope of 3,996 ha
Operational elements		
Ore processing	Figure 3	Up to 4.4 Mtpa
Waste Rock to Waste Rock Landform(s)		440 Mt capacity for Life of Mine
Tailings Deposition		2.6 Mtpa in wet tailings
Disposal of Inert Refinery Waste to Waste Rock Landform(s)		390 000 tpa (dry (no change))
Pit Dewatering		Up to 0.4 GL/year

Groundwater abstraction	Figure 3	0.52 GL/year (No change) Groundwater Licence (GWL) 205547
Proposal elements with greenhouse gas emissions		
Operational elements:		
Scope 1	69,000 t CO ₂ -e/y for Scope 1 emissions (annual average)	
Scope 2	53,000 t CO ₂ -e/y for Scope 2 emissions (annual average)	
Scope 3	1,129,000 t CO ₂ -e/y Scope 3 emissions (annual average)	
Rehabilitation		
Rehabilitation will be undertaken progressively during mining operations (where possible) within areas disturbed by the Proposal (excluding mine pits) in accordance with a Mine Closure Plan assessed and approved under the <i>Mining Act 1978</i> . Rehabilitation will seek to restore environmental values by supporting native vegetation comparable to adjacent undisturbed areas.		
Commissioning		
Commissioning of the processing plant, power infrastructure and associated infrastructure (as required).		
Decommissioning		
Decommissioning of mine infrastructure in accordance with a Mine Closure Plan assessed and approved under the <i>Mining Act 1978</i> .		
Other elements which affect extent of effects on the environment		
Proposal time*	Maximum project life	Up to 30 years, inclusive of decommissioning and rehabilitation

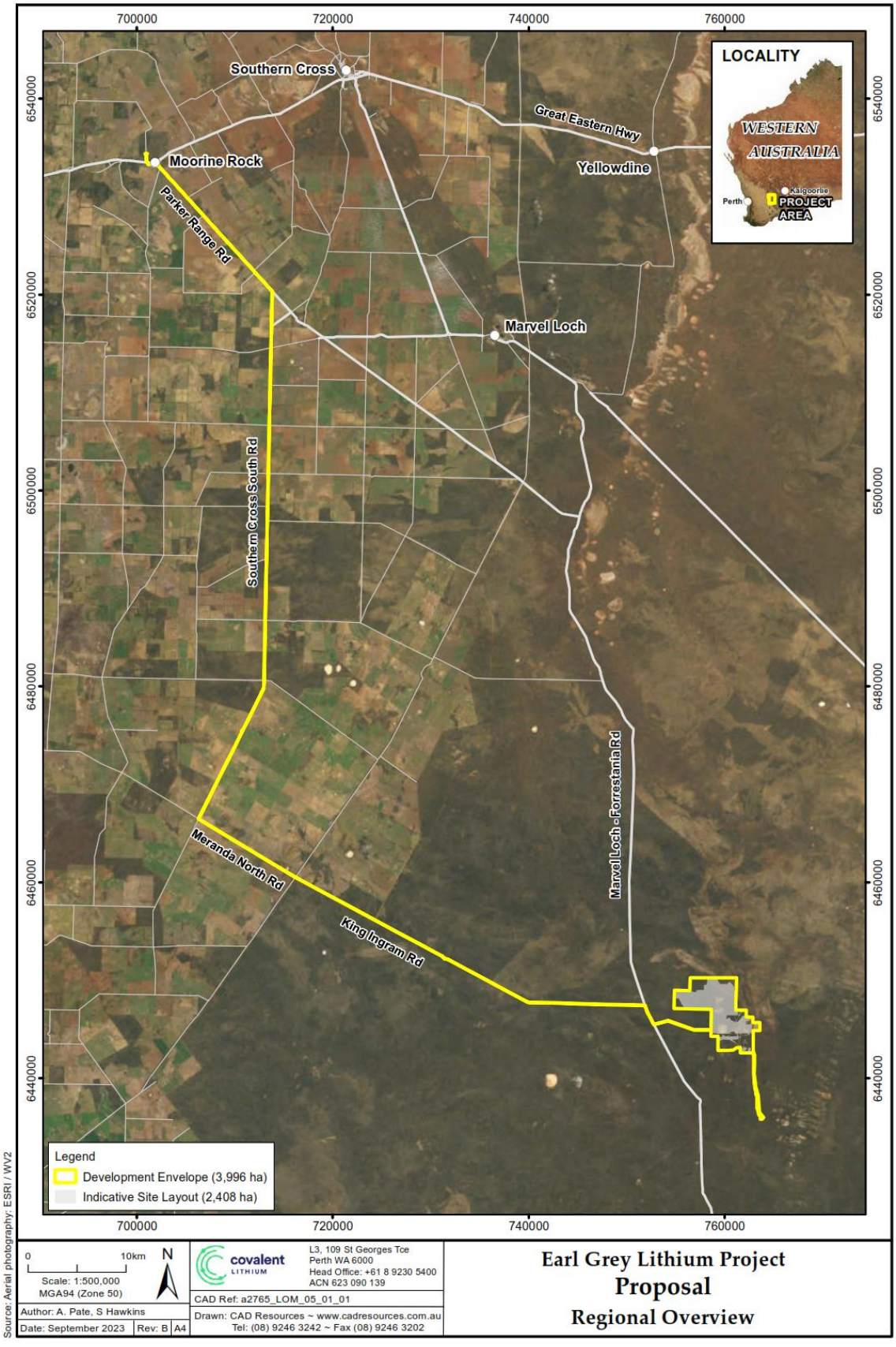


Figure 1: Life of Mine - Development Envelope

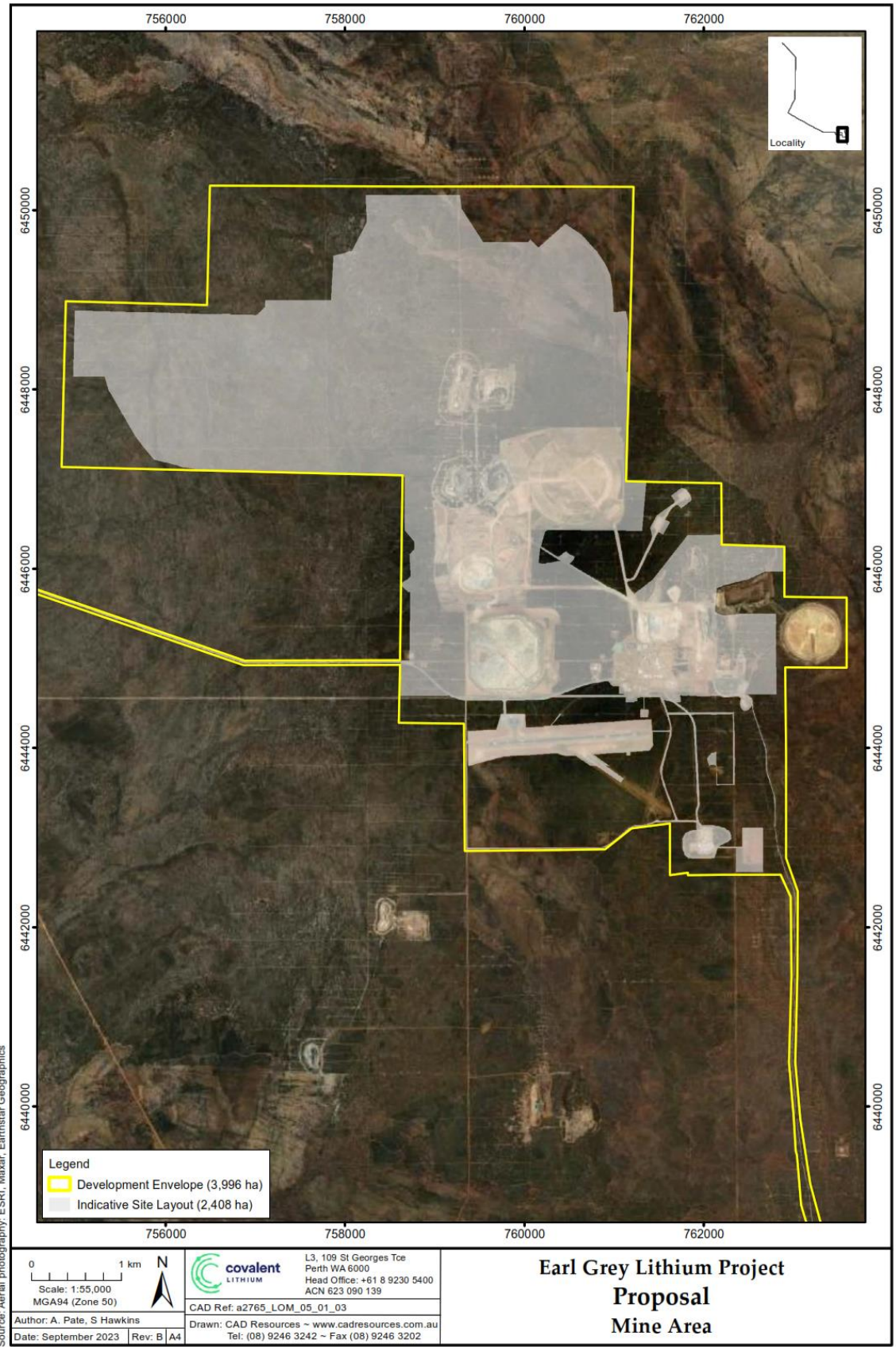


Figure 2: Life of Mine - Disturbance Footprint (Indicative Site Layout)

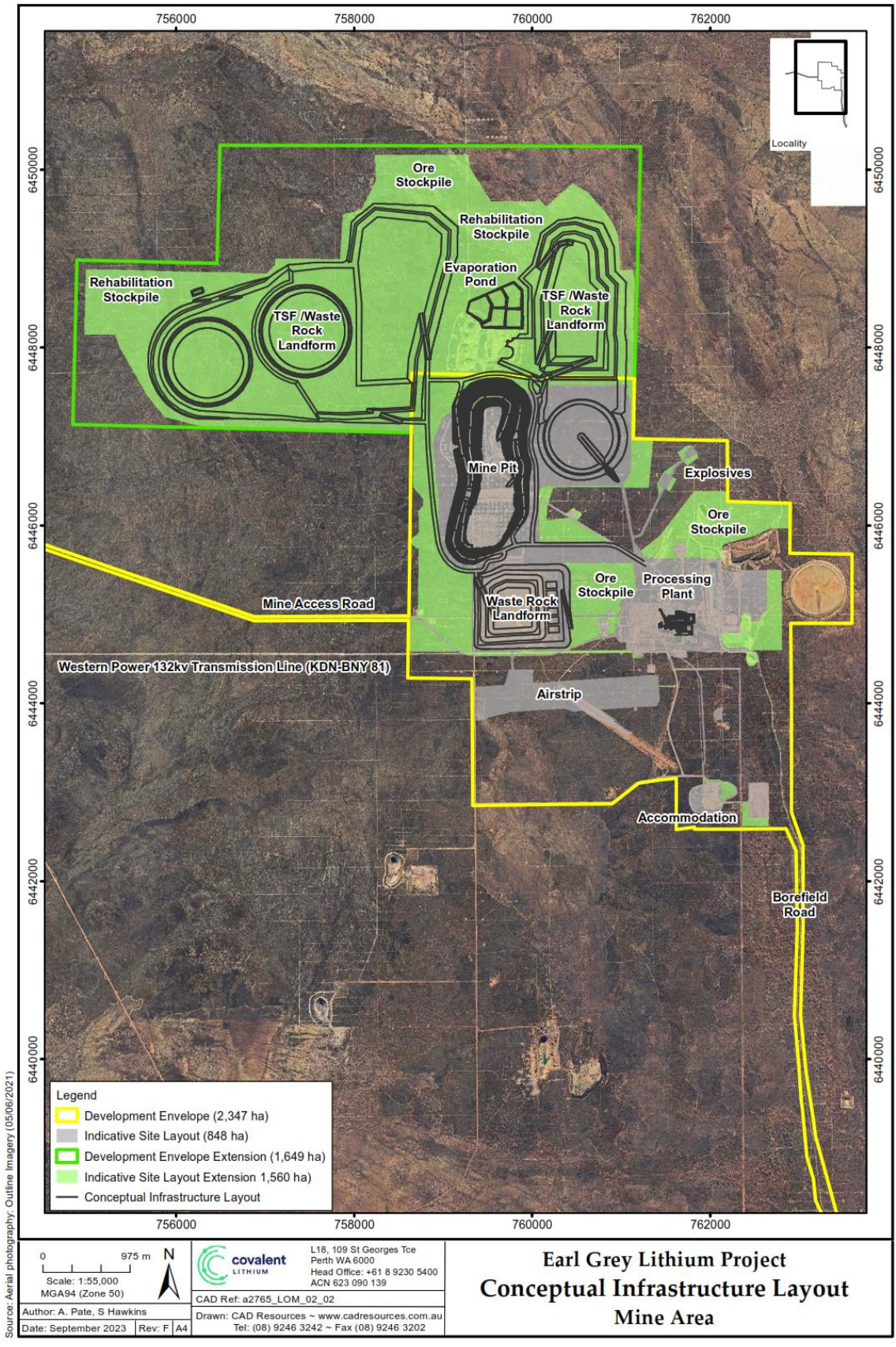


Figure 3: Conceptual Layout of Approved Project and Proposed Life of Mine