

# Covalent Lithium

## Proposal Content Document

**Table 1: General proposal content description**

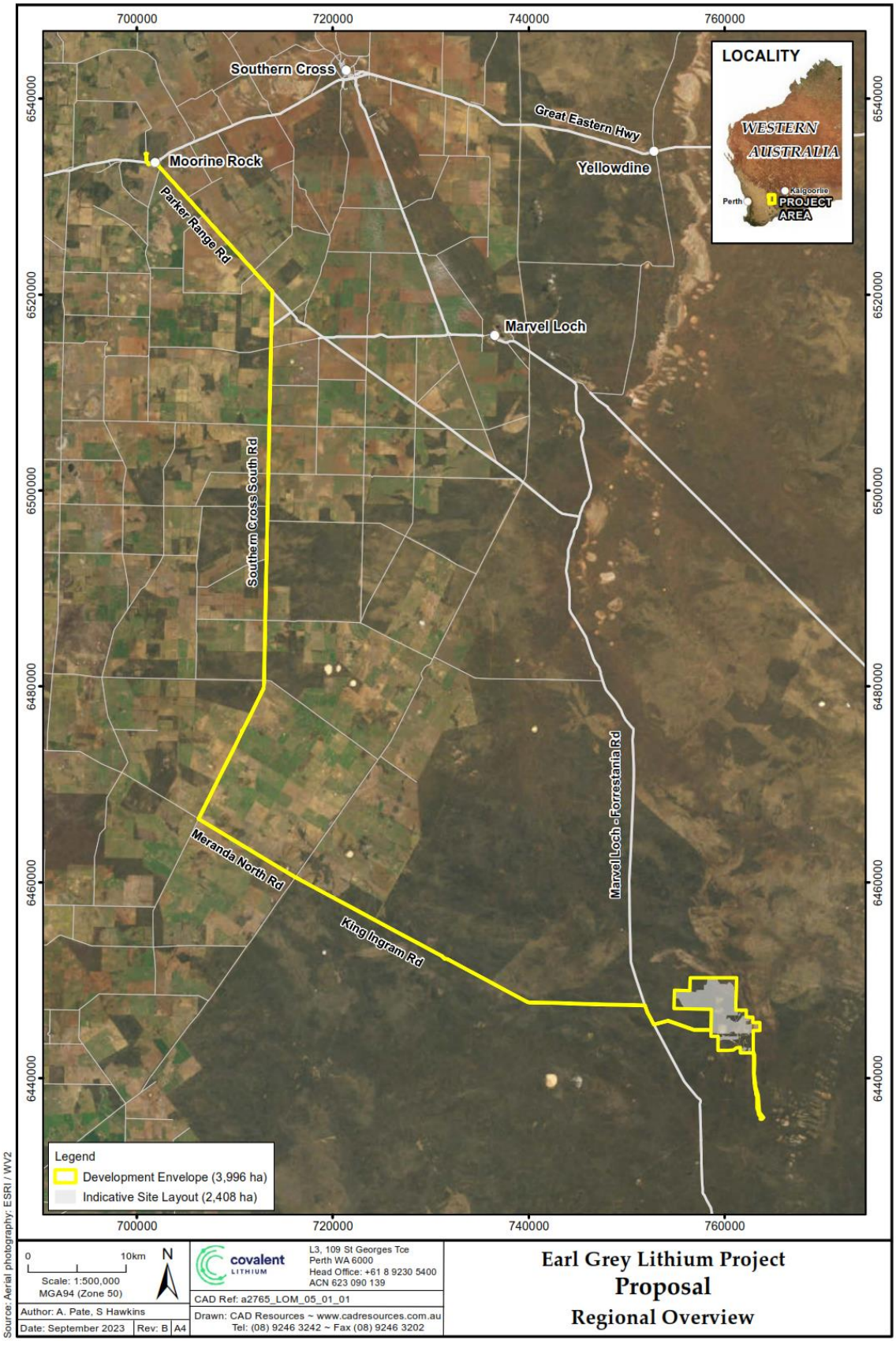
<b>Proposal title</b>	Earl Grey Lithium Project – Life of Mine
<b>Proponent name</b>	Covalent Pty Ltd
<b>Short description</b>	<p>The Proposal is to develop a pegmatite-hosted lithium deposit at the abandoned Mt Holland Mine Site, in a Development Envelope of 3,996 ha.</p> <p>The Proposal involves new clearing of up to 1,885 ha of native vegetation, and use of existing cleared/disturbed land, infrastructure including a mine pit, waste rock landforms, tailings storage facility, processing plant, airstrip, accommodation village, water storage facilities, power generation infrastructure and associated infrastructure.</p>

**Table 2: Proposal content elements**

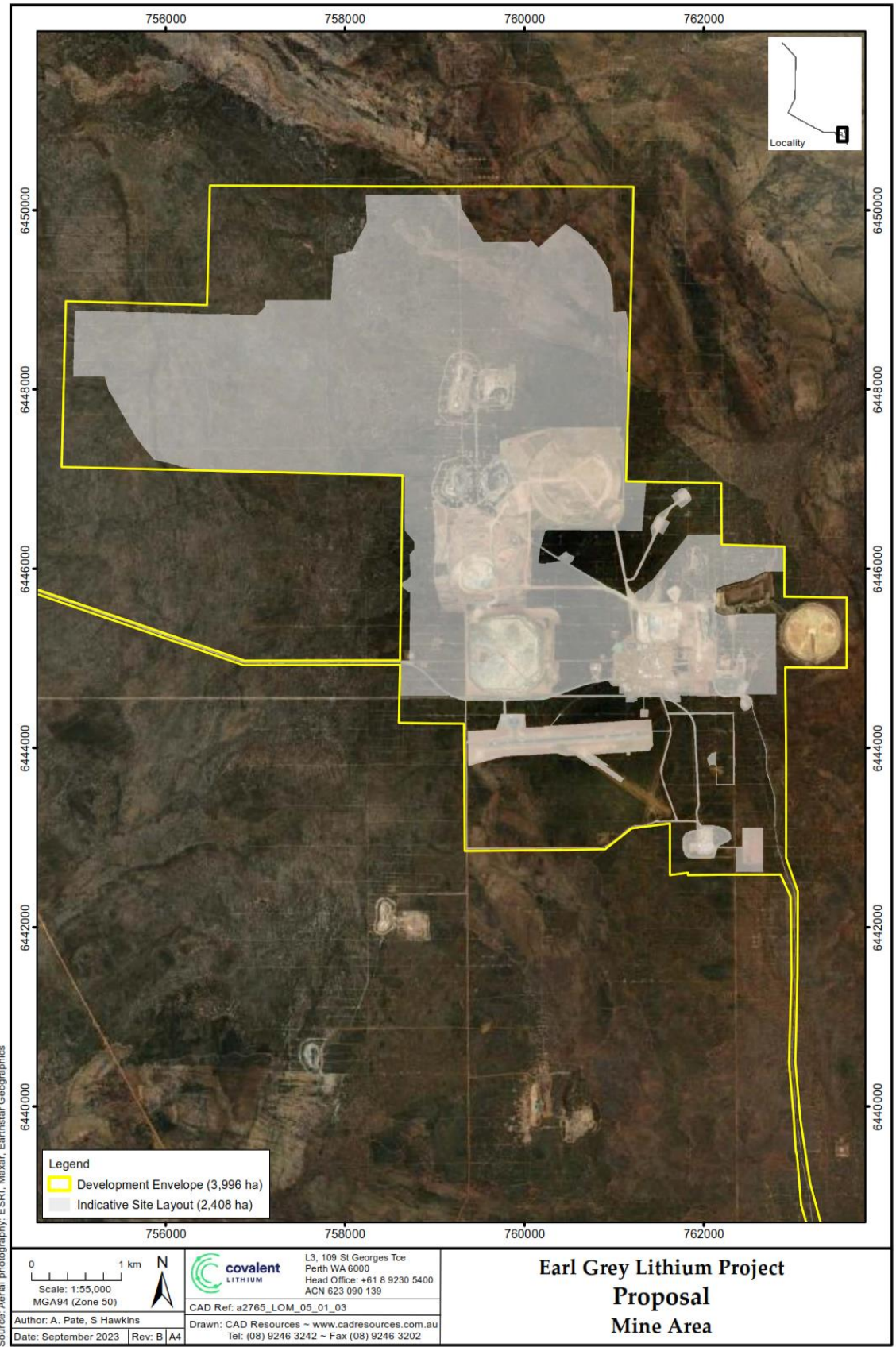
<b>Proposal element</b>	<b>Location / description</b>	<b>Existing Proposal Extent, capacity, or Range</b>	<b>Proposed Amendment</b>	<b>Combined extent, capacity, or range</b>
<b>Physical elements</b>				
Development Envelope	Figure 1	2347 ha	1649 ha	3,996 ha
Disturbance Footprint	Figure 2	882 ha	1526 ha	2408 ha
Native Vegetation Clearing	Figure 3	442 ha	1443 ha	Clearing of no more than 1,885 ha of native vegetation
Mine and associated infrastructure	Figure 3	Disturbance of up to 882 ha including use of existing cleared and/or disturbed land, within a Development Envelope of 2347 ha	Increased disturbance footprint of up to 1526 ha through clearing of native vegetation and use of existing cleared and/or disturbed land	Disturbance of up to 2,408 ha including use of existing cleared and/or disturbed land, within a Development Envelope of 3,996 ha

<b>Operational elements</b>				
Ore processing capacity	Processing Plant Figure 3	Up to 2 Mtpa capacity	Up to 2.4 Mtpa of increased capacity	Up to 4.4 Mtpa capacity
Waste Rock to Waste Rock Landform(s)	Waste rock landform(s) Figure 3	85 Mt capacity over 10 years mining approval	Increase WRL capacity to facilitate Life of Mine	440 Mt capacity for Life of Mine
Tailings Deposition	Tailings Storage Facilities (TSF) Figure 3	1.2 Mtpa in wet tailings	Increase of 1.4 Mtpa in wet tailings	2.6 Mtpa in wet tailings
Disposal of Inert Refinery Waste to Waste Rock Landform(s)	Waste rock landform(s) Figure 3	390 000 tpa (dry)	No change	Figure 3)
Pit Dewatering	Mine Pit	0.1 GL/year	Increase by 0.3 GL/year	0.4 GL/year
Groundwater abstraction	Westona Groundwater Area Paleochannel – fractured rock aquifer	0.52 GL/year Groundwater Licence (GWL) 205547	No change	0.52 GL/year Groundwater Licence (GWL) 205547
<b>Proposal elements with greenhouse gas emissions</b>				
Construction and Operational elements:				
Scope 1 Land clearing; Fuel use	70,000 - 84,000 t CO <sub>2</sub> -e/y (annual average, Scope 1 emissions)	69,000 t CO <sub>2</sub> -e/y (annual average, Scope 1 emissions)		
Scope 2 Purchased electricity	44,000 t CO <sub>2</sub> -e/y (annual average, Scope 2 emissions)	53,000 t CO <sub>2</sub> -e/y Scope 2 emissions (annual average, Scope 2 emissions)		
Scope 3 Primarily processing	665,000 t CO <sub>2</sub> -e/y (annual average, Scope 3 emissions)	1,129,000 t CO <sub>2</sub> -e/y (annual average, Scope 3 emissions)		

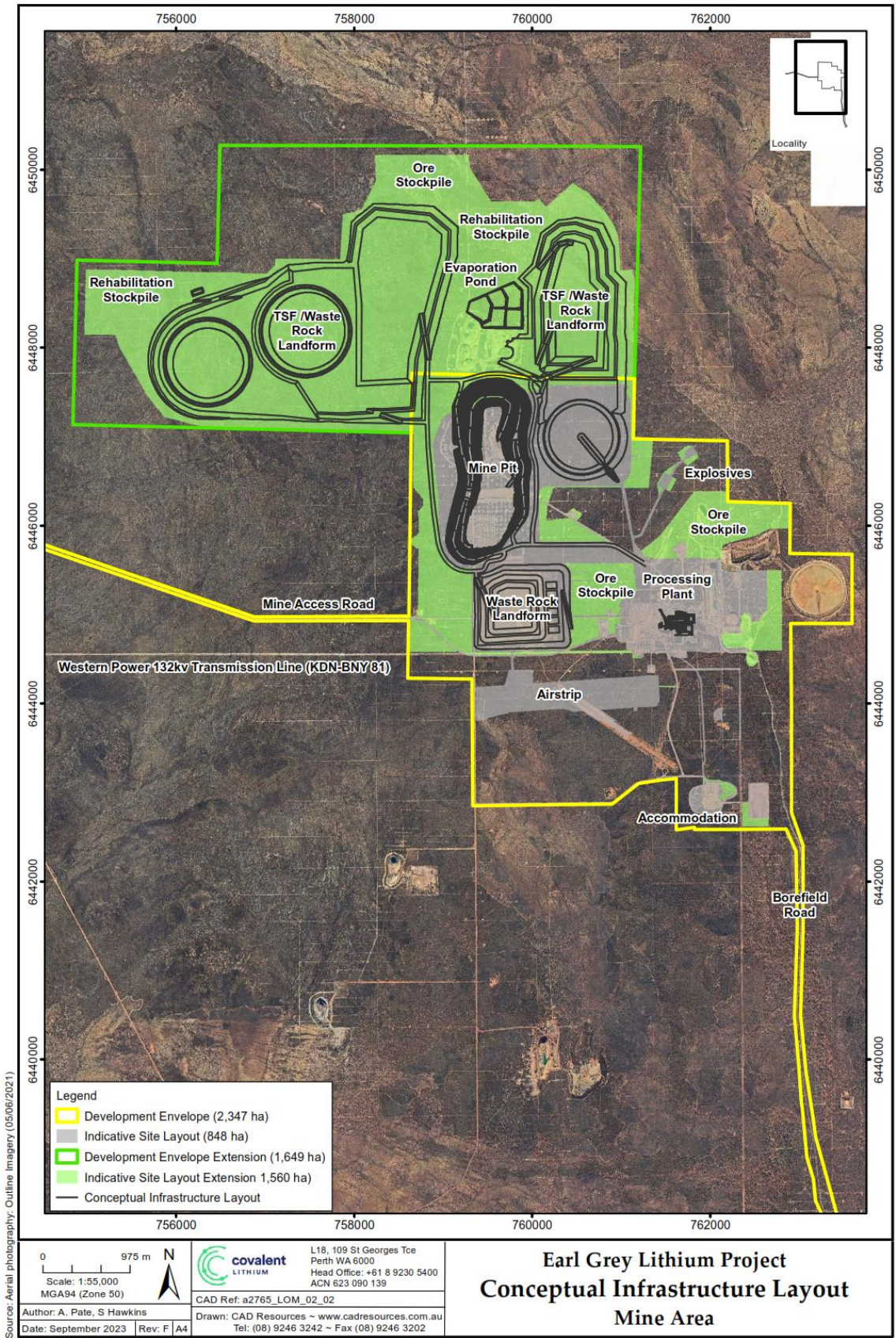
of sold products				
<b>Rehabilitation</b>				
Rehabilitation will be undertaken progressively during mining operations (where possible) within areas disturbed by the Proposal (excluding mine pits) in accordance with a Mine Closure Plan assessed and approved under the <i>Mining Act 1978</i> . Rehabilitation will seek to restore environmental values by supporting native vegetation comparable to adjacent undisturbed areas.				
<b>Commissioning</b>				
Commissioning of the processing plant, power infrastructure and associated infrastructure (as required).				
<b>Decommissioning</b>				
Decommissioning of mine infrastructure in accordance with a Mine Closure Plan assessed and approved under the <i>Mining Act 1978</i> .				
<b>Other elements which affect extent of effects on the environment</b>				
Proposal time	Maximum project life	40 years	Reduced mine life by up to 10 years	Up to 30 years, inclusive of decommissioning and rehabilitation



**Figure 1: Life of Mine - Development Envelope**



**Figure 2: Life of Mine - Disturbance Footprint (Indicative Site Layout)**



**Figure 3: Conceptual Layout of Approved Project and Proposed Life of Mine**