

# Template

## Proposal Content Document

**Table 1:** General proposal content description

<b>Proposal title</b>	Belisama Gas Project
<b>Proponent name</b>	Hancock Energy (PBN) Pty Ltd
<b>Short description</b>	<p>The Belisama Gas Project is located in the Mid West region of Western Australia, approximately, 25 km south-west of Mingenew. It involves the construction and operation of a Central Processing Facility (CPF) located at 1906 Yandanooka West Road, Milo (Lot 441 on Plan 2981). Gas produced from nearby gas projects (outside the scope of this Proposal) will be combined and transported, via a central flowline, for treatment at the CPF. Once treated, the gas will be directed into an export pipeline connected to the Dampier Bunbury Natural Gas Pipeline (DBNGP). The stabilised condensate byproduct will be stored on-site prior to being transported off-site for export.</p> <p>The key components of the Proposal include:</p> <ul style="list-style-type: none"><li>• A buried central flowline</li><li>• A CPF, including on-site infrastructure to support the operations phase including an administration building with a central control room, offices and emergency response facilities, power generation equipment, condensate storage, warehousing, workshops, switch room infrastructure and accommodation buildings</li><li>• A gas export pipeline connecting the Central Processing Facility to the DBNGP</li></ul>

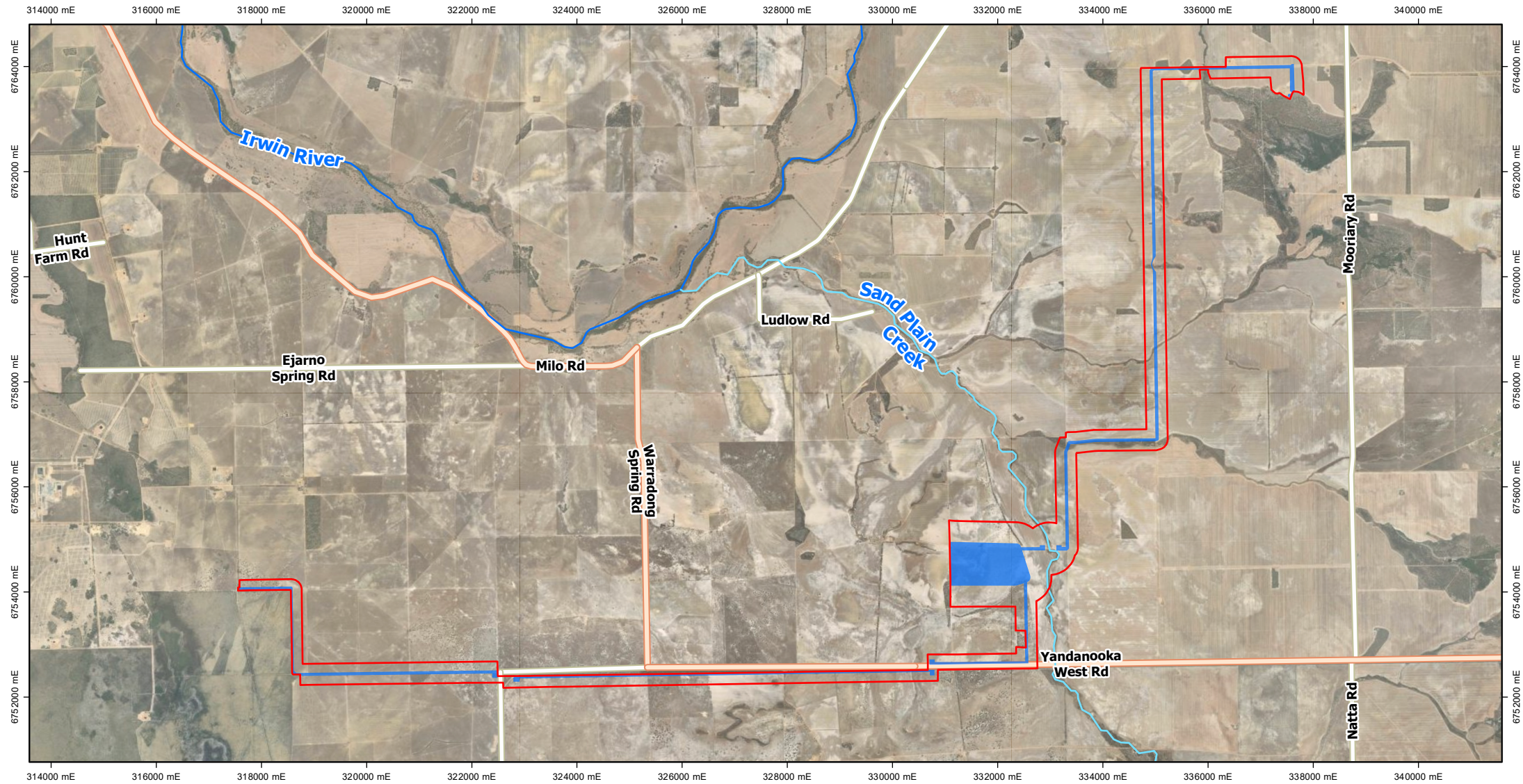
**Table 2:** Proposal content elements

<b>Proposal element</b>	<b>Location / description</b>	<b>Maximum extent, capacity or range</b>
<b>Physical elements</b>		
Central flowline	Figure 1, Figure 2, Figure 3	291.5 ha of disturbance, including 5.7 ha of remnant native vegetation clearing within a 1,326.9 ha Development Envelope.
Export pipeline		
CPF and supporting infrastructure: <ul style="list-style-type: none"><li>• Gas Liquid separation equipment</li><li>• Gas processing train</li><li>• Condensate stabilisation, storage and truck-loading facilities</li><li>• Produced water treatment facilities</li></ul>		
		Two areas within the Development Envelope totalling 21.8 ha have been designated as Clearing Exclusion Zones (CEZs) and will be avoided.
		Horizontal Direct Drilling will be utilised at the intersection of the central flowline with Sand Plain Creek, and where the export pipeline crosses Yandanooka West Road and Mount Adams Road.

<ul style="list-style-type: none"> <li>• Oily water treatment facilities</li> <li>• Power station and power distribution</li> <li>• Buildings (warehouse, workshop, administration offices, central control room)</li> <li>• Process control and communications infrastructure</li> <li>• Diesel fuel and chemical storage</li> <li>• Flare and safety systems including firewater</li> <li>• Bore water treatment and supply systems including potable water</li> <li>• Evaporation ponds and stormwater sediment pond</li> <li>• Sewage treatment plants</li> <li>• Temporary construction utilities and laydown areas</li> <li>• Temporary and permanent accommodation camps</li> </ul>		
<b>Construction elements</b>		
Construction water supply	NA	Up to 0.3 GL per annum from groundwater bores for a maximum of three years
Construction accommodation camp	Figure 3	Maximum 400-person capacity
<b>Operational elements</b>		
Natural gas production		Up to 210 TJ/day sales gas
Condensate production	NA	Nominally 288 m <sup>3</sup> per day up to max 377 m <sup>3</sup> per day
Operational water supply		Maximum of 0.03 GL per annum from groundwater bores for the life of the Proposal
Operations accommodation camp	Figure 3	28 person capacity, with the potential to expand to accommodate up to 40 persons in the future via the addition of accommodation modules.
Operational power demands		Maximum output of 15 MW

<b>Proposal elements with greenhouse gas emissions</b>		
<b>Construction elements:</b>		
Scope 1	11,625 tCO <sub>2</sub> -e	
Scope 2	NA	
Scope 3	NA	
<b>Operation elements:</b>		
Scope 1	72,938 tCO <sub>2</sub> -e/year under a base case scenario (processing of Lockyer gas only at 210 TJ/day sales gas). Up to a maximum of 85,917 tCO <sub>2</sub> -e/year under a high emissions scenario (targeted future scenario co-processing a blend of gases at 210 TJ/day sales gas).	
Scope 2	NA	
Scope 3	4,356,015 tCO <sub>2</sub> -e/year under a base case scenario (processing Lockyer gas only at 210 TJ/day sales gas). 4,275,616 tCO <sub>2</sub> -e/year when co-processing a blend of gases at 210 TJ/day sales gas (targeted future scenario).	
<b>Rehabilitation</b>		
The Proposal utilises existing cleared areas (i.e., agricultural land devoid of native vegetation) wherever possible, and horizontal directional drilling (HDD) to traverse three locations (Sand Plain Creek, Yandanooka West Road and Mt Adams Road) to avoid impacts to native vegetation, potential heritage values and local traffic. Only small areas of native vegetation in areas necessary for on-going operational use will be cleared. Rehabilitation of native vegetation prior to decommissioning is therefore not relevant to this Proposal.		
<b>Commissioning</b>		
Environmental commissioning will be implemented in stages under an Environment Plan approved by the Department of Mines, Petroleum and Exploration; and an Environmental Commissioning Plan that will be developed as a requirement of the Works Approval process (Part V of the EP Act).		
<b>Decommissioning</b>		
In general, all structures, pipelines and equipment will be removed, except where the removal may have a higher impact than leaving in-situ (i.e., pipelines under roads). Hancock Energy will rehabilitate disturbed areas to re-establish native vegetation, restore the existing land use (i.e., agriculture) that existed prior to the implementation of the Proposal, or establish the agreed post-decommissioning land use.		
<b>Other elements which affect extent of effects on the environment</b>		
Proposal time	Maximum project life	30 years
	Construction phase	Approximately 36 months

	Operations phase	25 years
	Decommissioning phase	Approximately 24 months



**AREA OF DETAIL:**



PREPARED BY:  
 Hancock Energy  
 28 - 42 Ventnor Ave  
 West Perth, WA 6005  
 Phone: +61 8 9429 8222



**LEGEND:**

- |                                  |                   |                   |
|----------------------------------|-------------------|-------------------|
| Development Envelope             | Major Watercourse | Access Road       |
| Indicative Disturbance Footprint | Minor Watercourse | Local Distributor |
|                                  | Roads             |                   |

Scale: 1:100,000 @A4 GDA2020 MGA Zone 50



**PROJECT:** Hancock Belisama Approvals

**TITLE:** Figure 1: Development Envelope and Indicative Disturbance Footprint

**SUBTITLE:**

**DATE:** 15/04/2026

**DATA SOURCE:**  
 Service Layer Credits: Earthstar Geographics, Sources: Esri, TomTom, Garmin, FAO, NOAA, USGS, © OpenStreetMap contributors, and the GIS User

**DOCUMENT STATUS:**

Revision	Description	SP Author	Reviewer	QC	CR Approved	21/01/2026 Date
0						



