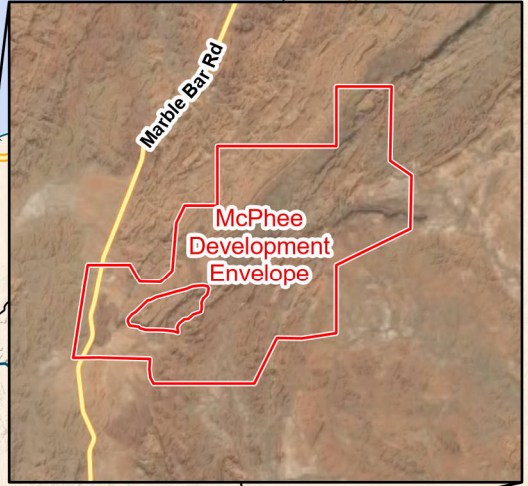


Figure 1: Regional Location of the Proposal



- Legend**
- Development Envelope
 - Pilbara IBRA Region Boundary
 - Nature Reserve

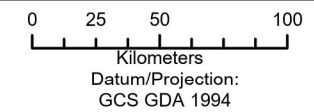
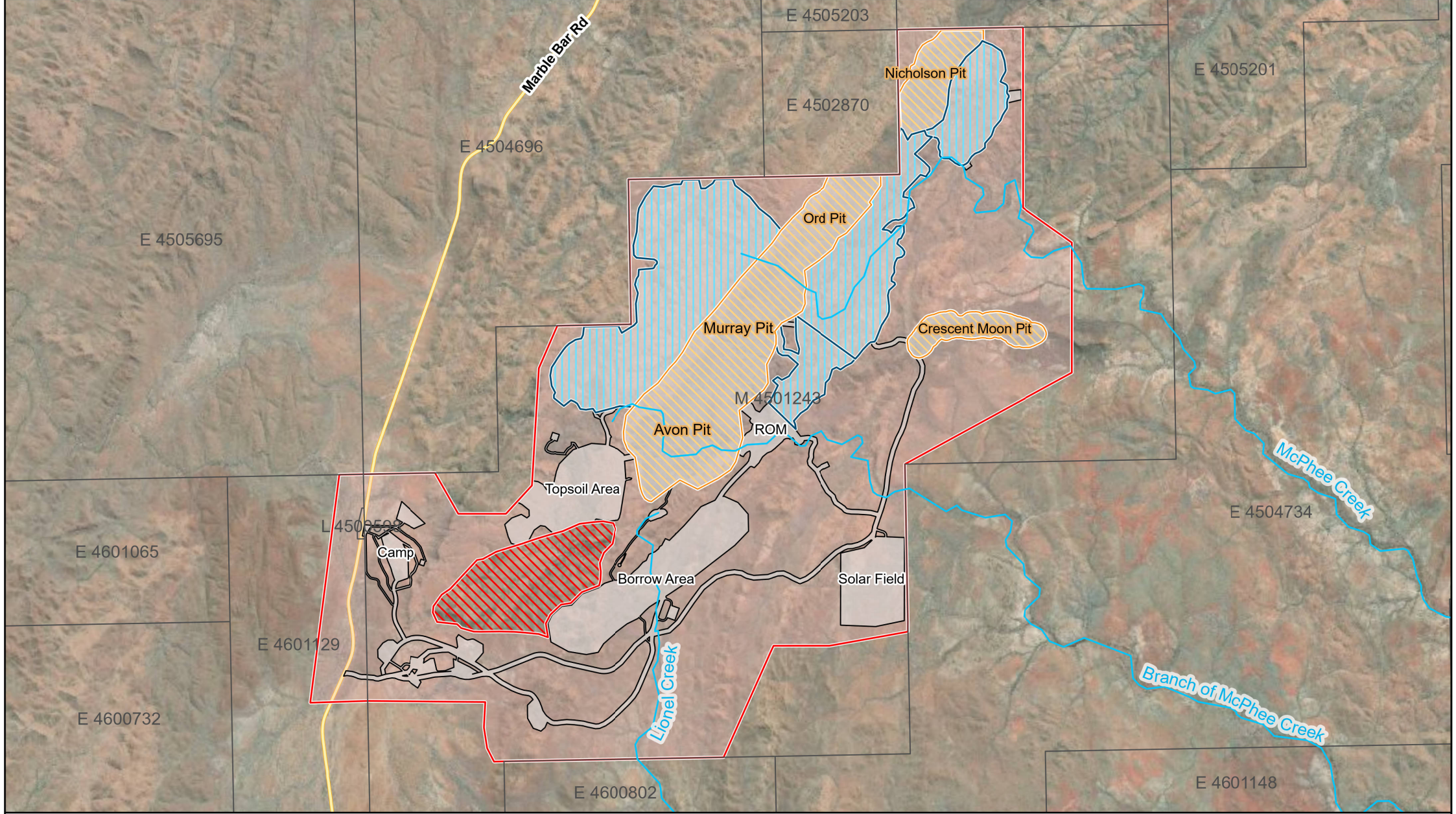


Figure 2: Development Envelope and Conceptual Footprint of the Proposal



Legend

- Development Envelope
- Conceptual Footprint
- Significant Fauna Exclusion Zone
- Pit
- Waste Dump

0 0.5 1 2
Kilometers

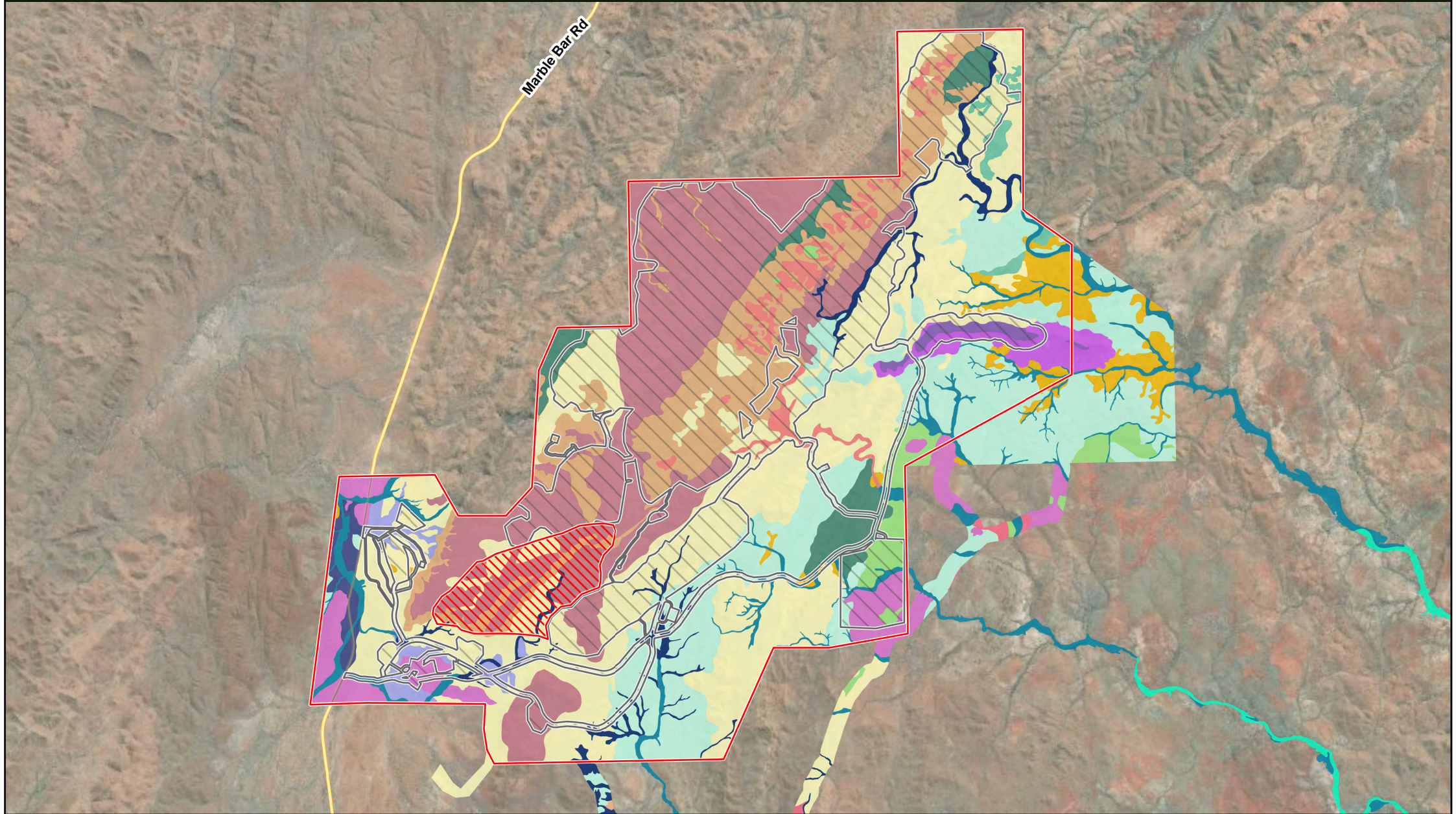
Datum/Projection:
GDA 1994 MGA Zone 51

N

eco logical
AUSTRALIA
A TETRA TECH COMPANY

Prepared by: GM Date: 16/02/2021

Figure 3: Vegetation recorded in the Development Envelope

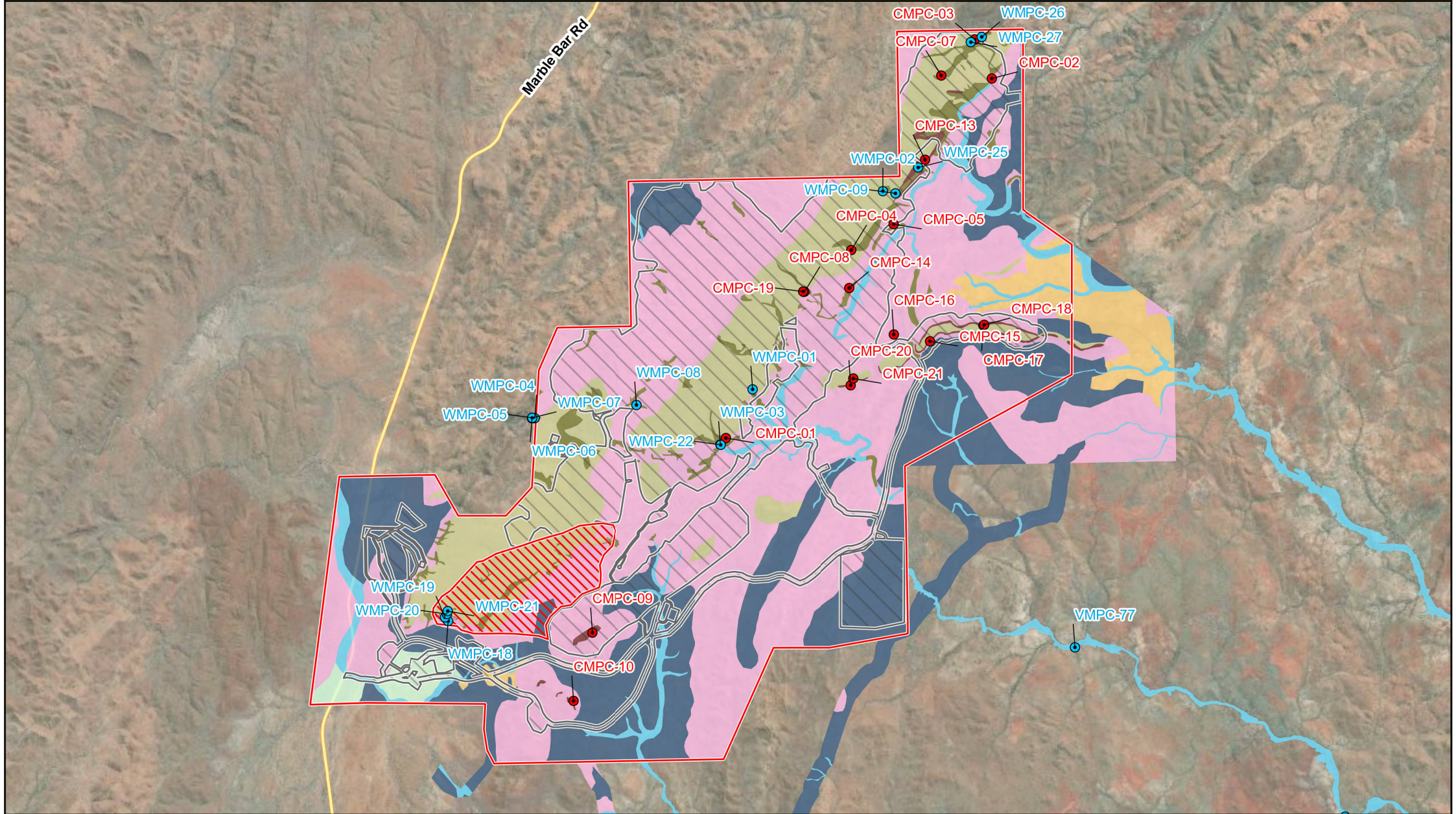


Legend		Vegetation Unit (Ecoscape 2020)			
Development Envelope	AiTw1	AsTe	ChAiTe	ElAmTe	EvApyCci
Conceptual Footprint	AiTw2	AsTl	ChAiTw	ElAmTb	Cleared
Significant Fauna Exclusion Zone	AoTl	AtTe	ChAmTe	ElAbTe	
		CcaAiTe	ChApyTt	ElAptTe	
		ChAiTa	EcApyCci	ElGwTe	

Datum/Projection: GDA 1994 MGA Zone 51

Prepared by: GM Date: 16/02/2021

Figure 4: Fauna habitats recorded in the Development Envelope



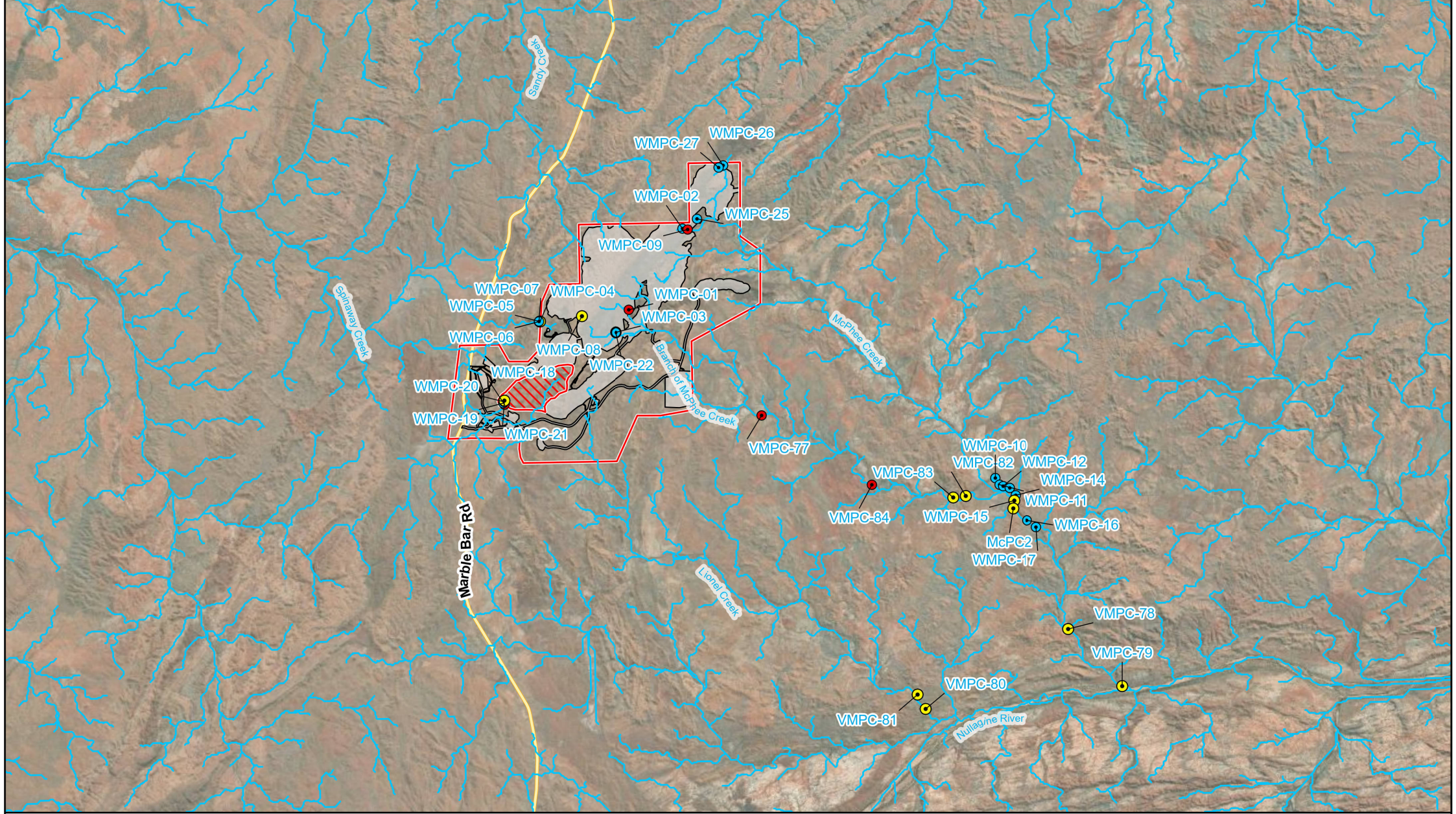
Legend			
Development Envelope	Pool	Fauna Habitat Types (Biologic 2020)	Hillcrest/Hillslope
Conceptual Footprint	Cave	Breakaway/Cliff	Rocky Foothills
Significant Fauna Exclusion Zone		Calcrete Plain	Spinifex Sandplain
		Drainage Line	Spinifex Stony Plain
		Gorge/Gully	

Datum/Projection: GDA 1994 MGA Zone 51

eco logical AUSTRALIA
A TETRA TECH COMPANY

Prepared by: GM Date: 16/02/2021

Figure 5: Surface hydrology of the Development Envelope



Legend		Pools	0 2 4 Kilometers
Development Envelope	Significant Fauna Exclusion Zone	Permanent	Datum/Projection: GDA 1994 MGA Zone 51
Conceptual Footprint	Drainage line	Semi-permanent	N
		Not permanent	eco logical AUSTRALIA A TETRA TECH COMPANY
			Prepared by: GM Date: 16/02/2021