

SAFENICKEL



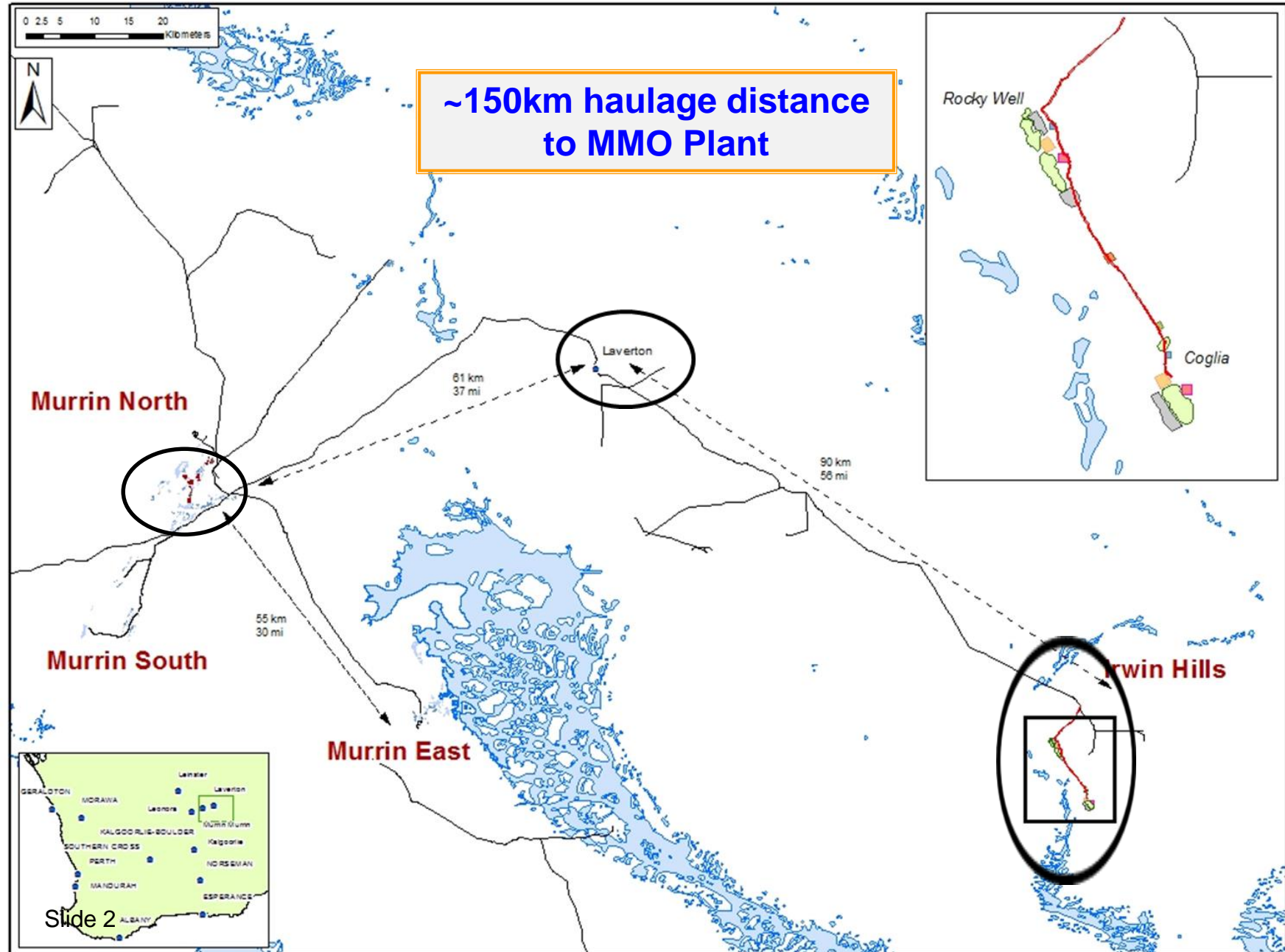
IRWIN HILLS PROJECT

Update/Overview

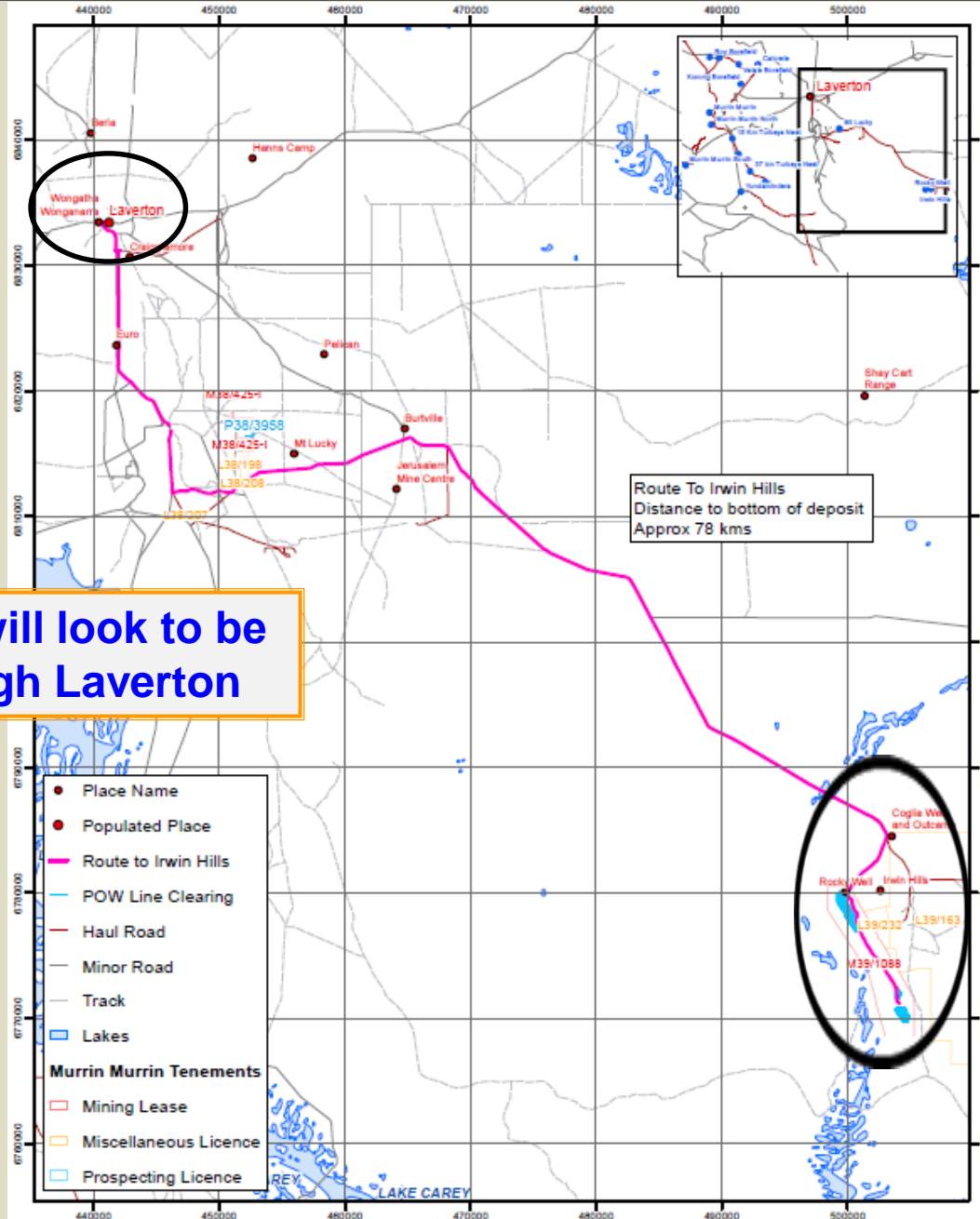
November 2019

GLENCORE

Irwin Hills Project - Location Map

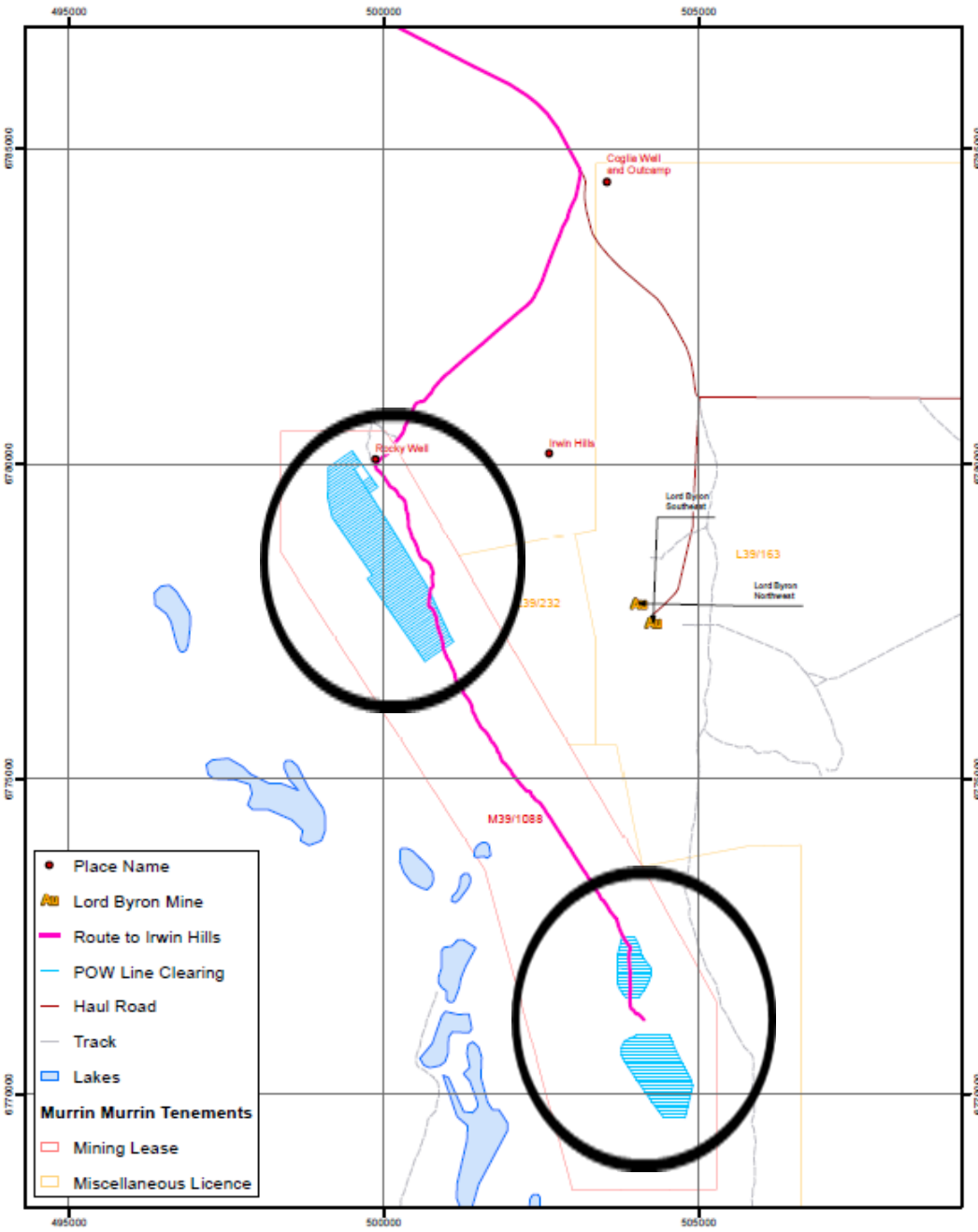


Irwin Hills Project - Location Map



Is “probable” will look to be hauling through Laverton

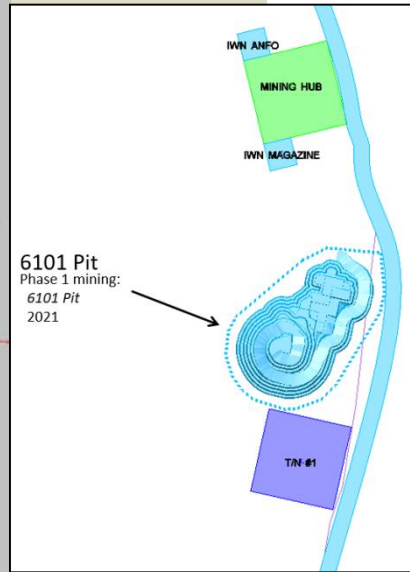
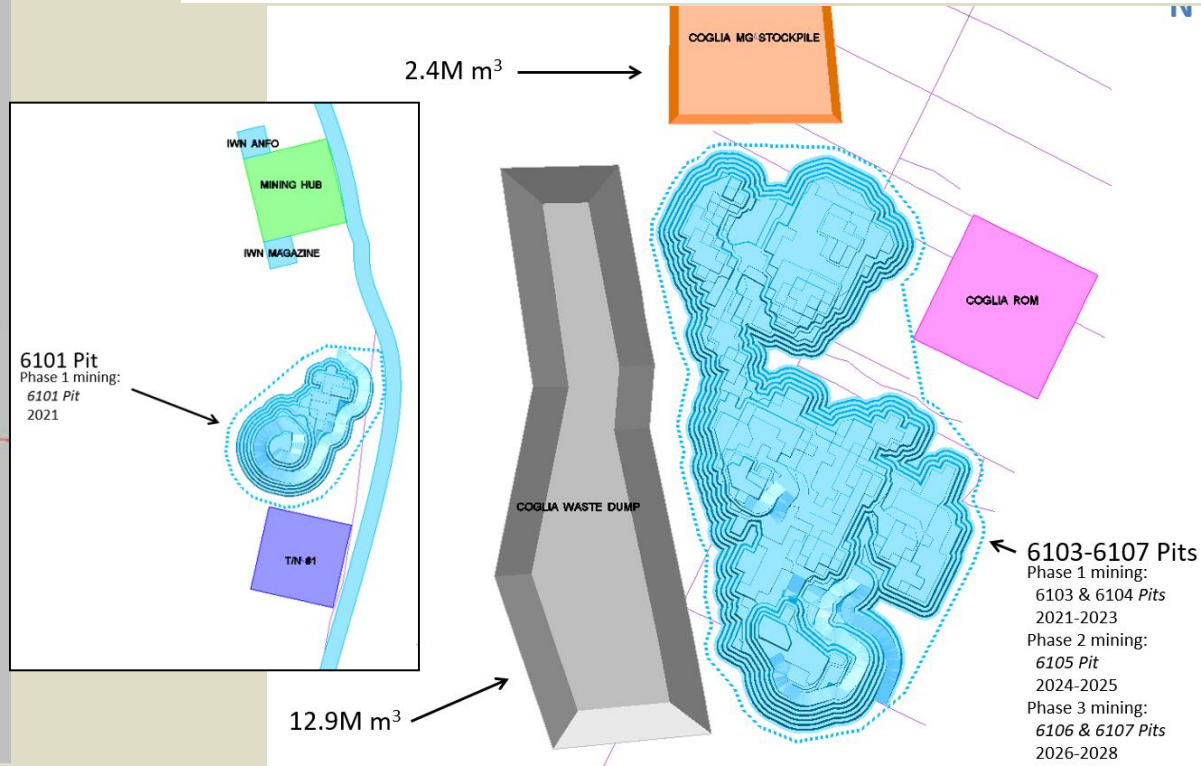
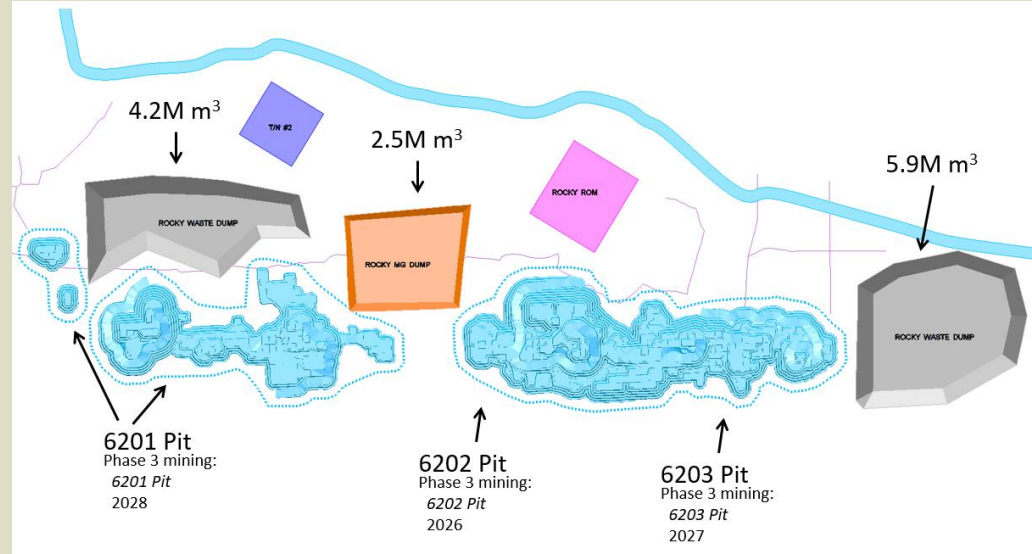
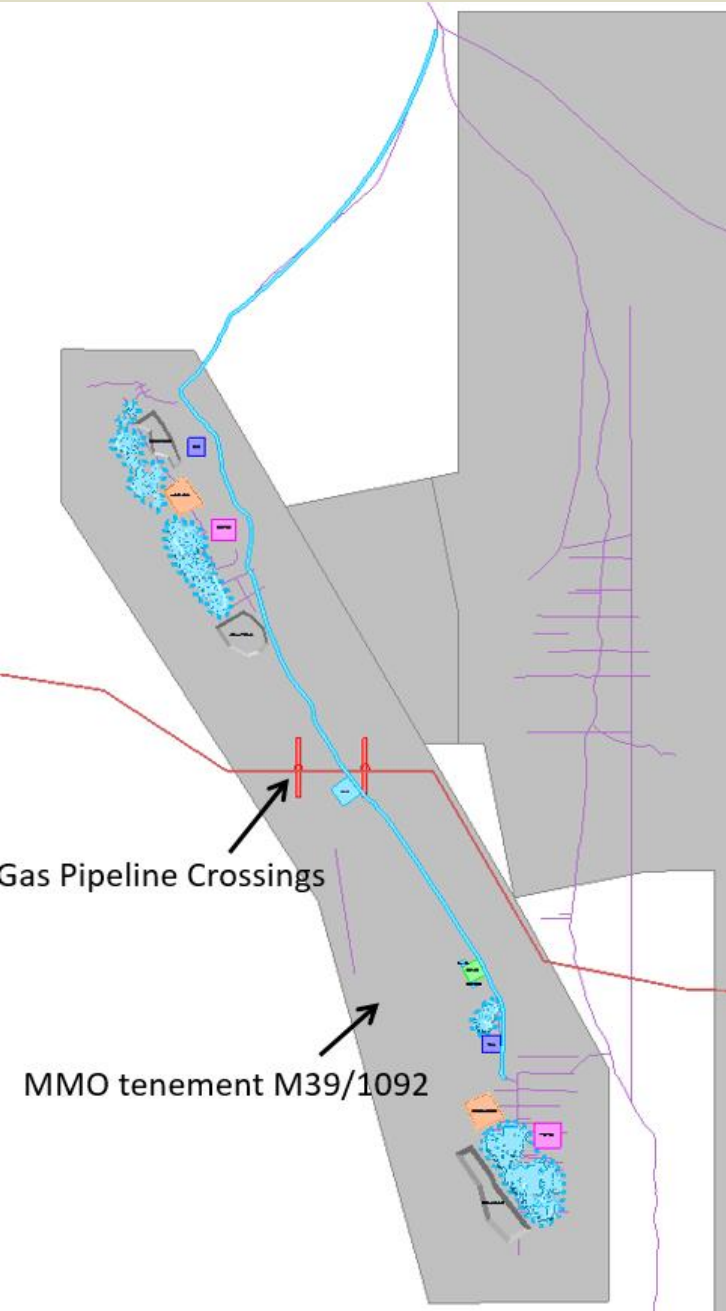
Irwin Hills – Project Area Map



NORTH deposit is Rocky Hill (RZ62) 62-series Pits

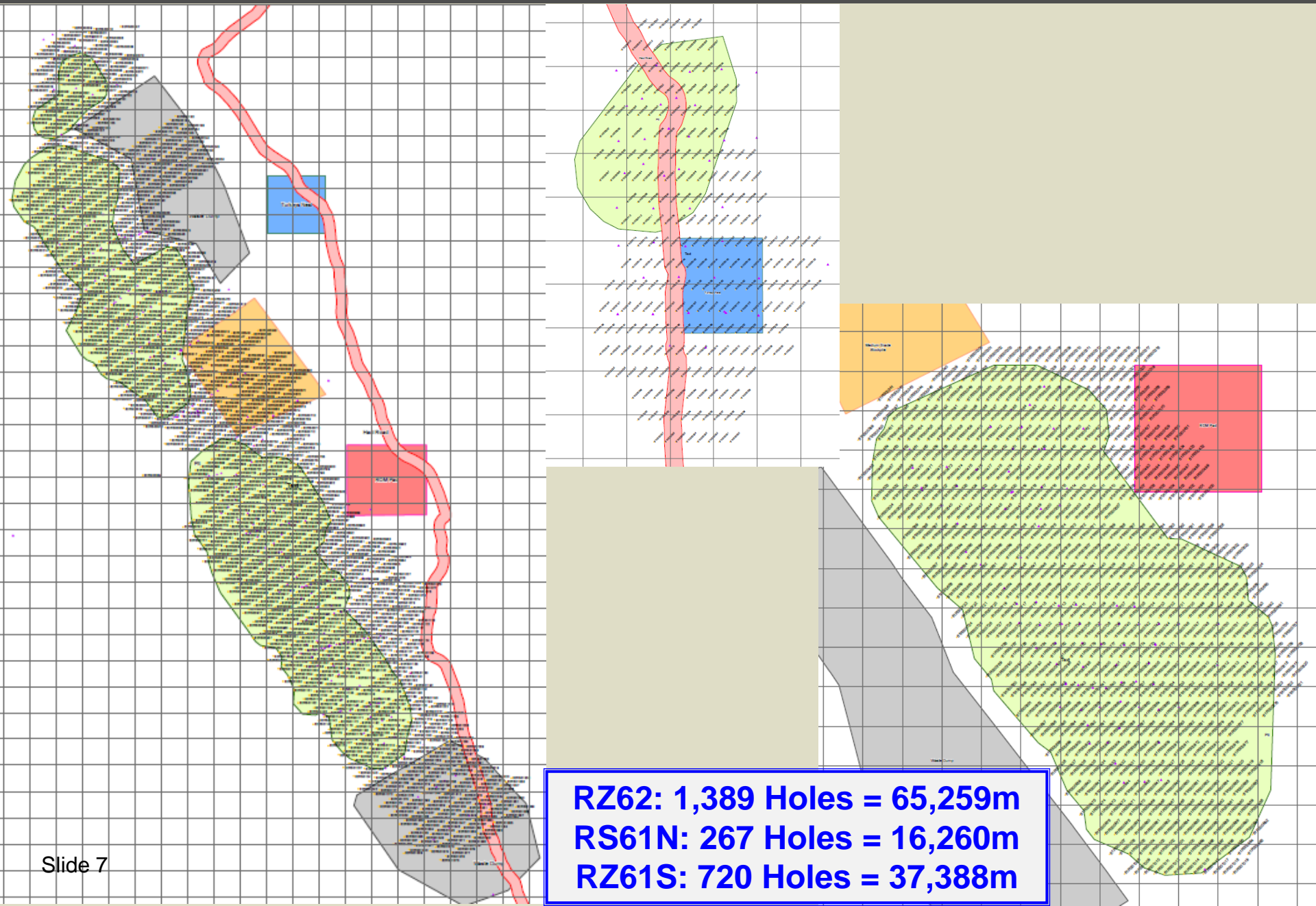
SOUTH deposit is Cogleia Well (RZ61N&RZ61S) 61-series Pits

Irwin Hills Project – Planned Pits



- Internal Stakeholder Project Team was assembled and meeting since March
- Spatial Survey control was established (7 x monuments installed)
- Well tests completed (recharge, quality), and have set-up the use of Rocky Well (pump, tanks)
- PERMITTING; work is on-going, gathering req'd info:
 - Groundwater Licence – Granted (DWER)
 - Arch – Parts 1 & 2 Completed
 - Ethno – Completed
 - Fauna – Completed
 - Flora – Stage 1 Complete (Stage 2 in 'spring')
- PoW submitted for circa 70 Ha of drill lines/pads
- Clearing contractor (Dirt Road) getting ready to mobilise (December 2019)
- 12-px exploration camp details sorted, prepping to mobilise on 2-Jan-20
- Drilling contractor sorted, begins 6-mo campaign in January 2020
- Completed Project Risk Assessment (“IWN drill camp”)

“Big steps were made in 2019 and we are now ready for 2020 Drill Campaign”



- Develop/finalise the *“Irwin Hills Exploration Project Management Plan v1.0”*
 - Community Engagement - visit w Shire of Laverton
 - Mobilise Clearing Contractor (drill lines/pad)
 - Base Camp infrastructure (water, power, fencing, septic leach drain)
 - Obtain the IT data link solution
 - Mobilise exploration camp facilities
 - Mobilise Drilling Contractor
 - Conduct ‘Phase 1’ Drilling Campaign (Jan-Jun 2020 105,015m)
 - Assaying, Modelling, Re-optimisation of Pits
 - Drilling ‘Phase 2’ planning (design)
 - Geotechnical Sampling (Material Characterisation)
 - IWN Project CAR Generation
- = **HOLD / “GATE 1”**

**= IMPROVED DETAILS IN THE 2021 BUDGET & PLAN
MATERIAL/ACTIVITY/COST SCHEDULE**

Any Questions?

