



Minara Resources

Irwin Hills Project

March 2021

Nyalpa Pirniku



Minara Resources

Murrin Murrin Operations

- Murrin Murrin Nickel Cobalt Project
- Open pit mines and processing plant
- Capacity of 45,000 tonnes of nickel and 3,200 tonnes of cobalt in metal (including third party feed)
- Remote site – FIFO operation
- Wholly owned by Glencore



Refined Nickel
(min. 99.8% purity briquettes)

Refined Cobalt
(min 99.8% purity briquettes)

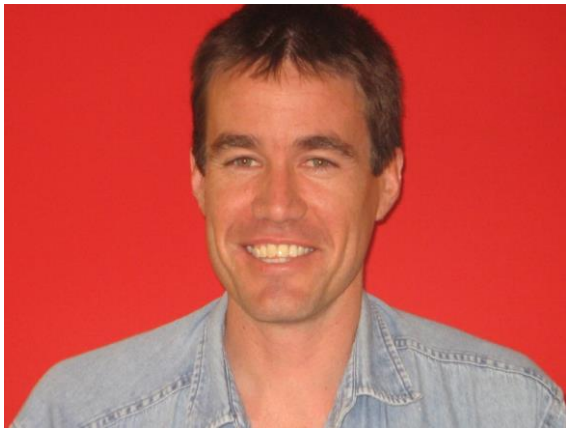




Brett Fowler
General Manager



Nic Fenner
Project Manager
Irwin Hills Development



Linton O'Meara
Manager
Risk, Environment & Community



James Rigg
Community Relations



We respect the role of the traditional custodians of the land. We want to work with the Nyalpa Pirniku to support the protection of Aboriginal heritage and culture.

We will continue our engagement with Nyalpa Pirniku, local Aboriginal communities and other regional stakeholders in our operational areas. This is an important part of how we work.

Responsibly sourcing the commodities that advance everyday life.



M I N A R A
R E S O U R C E S



Our Values

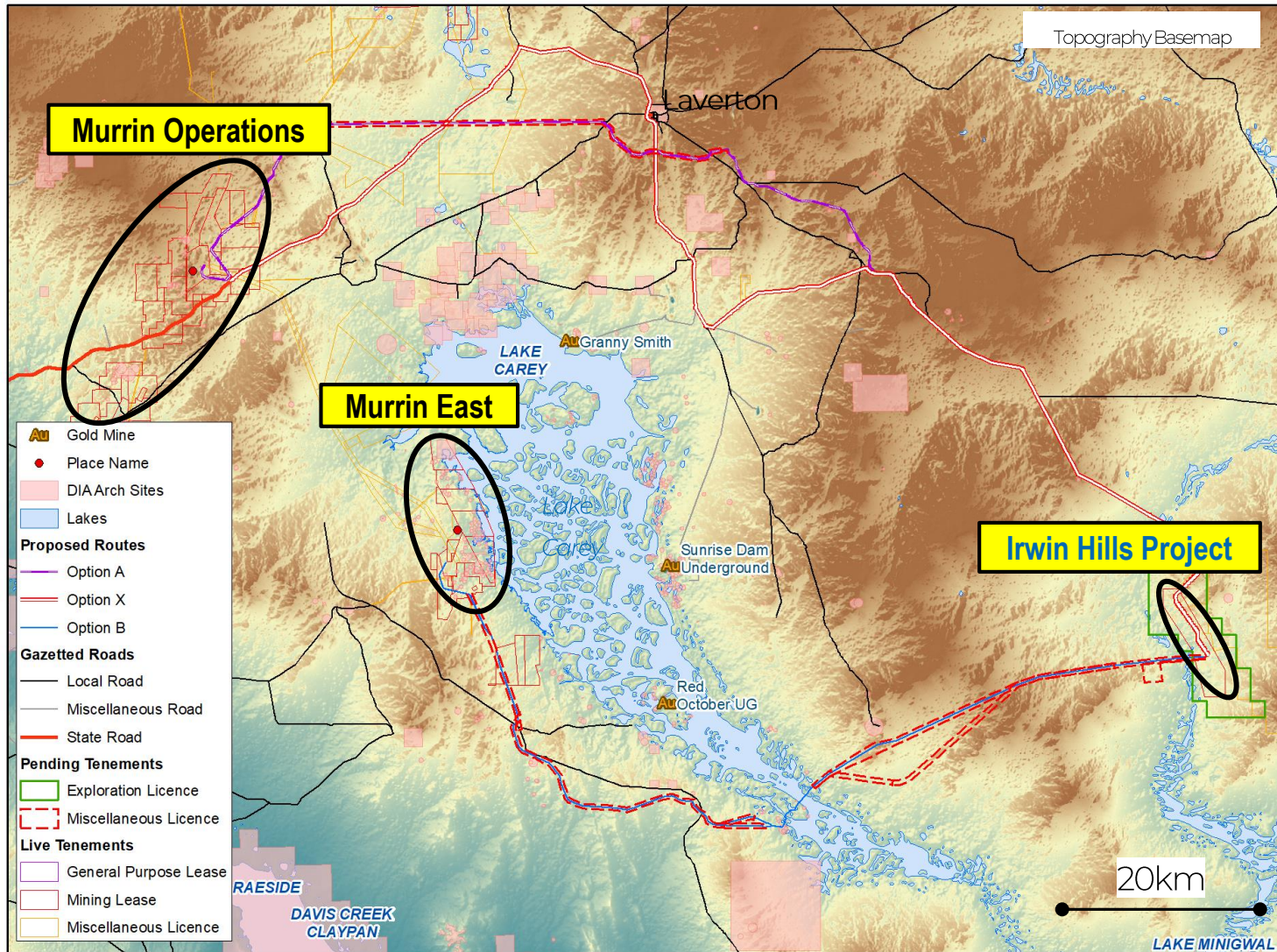
- Safety
- Integrity
- Responsibility
- Openness
- Simplicity
- Entrepreneurialism

Our values reflect our purpose, our priorities and the beliefs by which we conduct ourselves and carry out our business activities. They define what it means to work at Glencore, regardless of location or role.

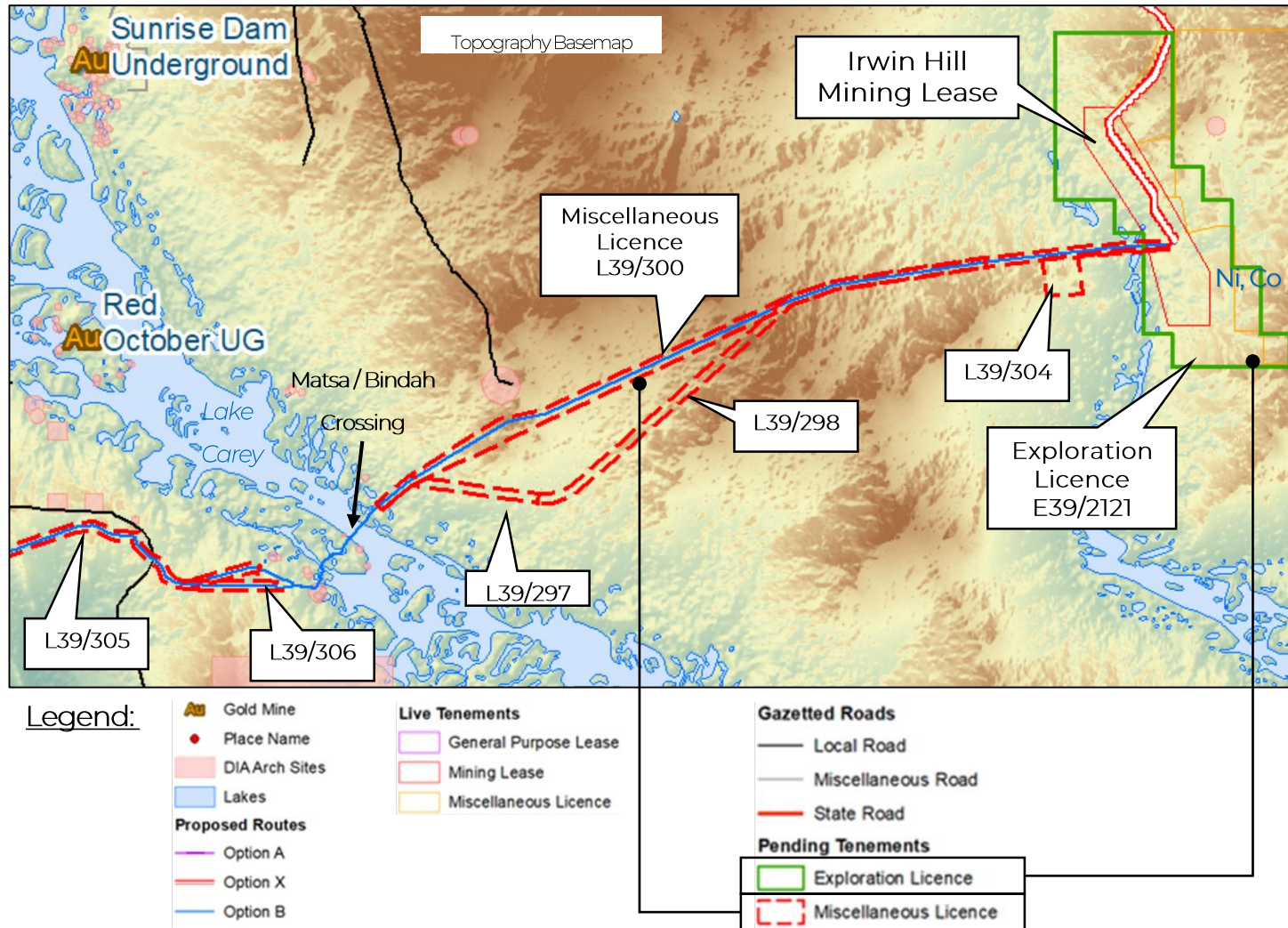


Minara Resources

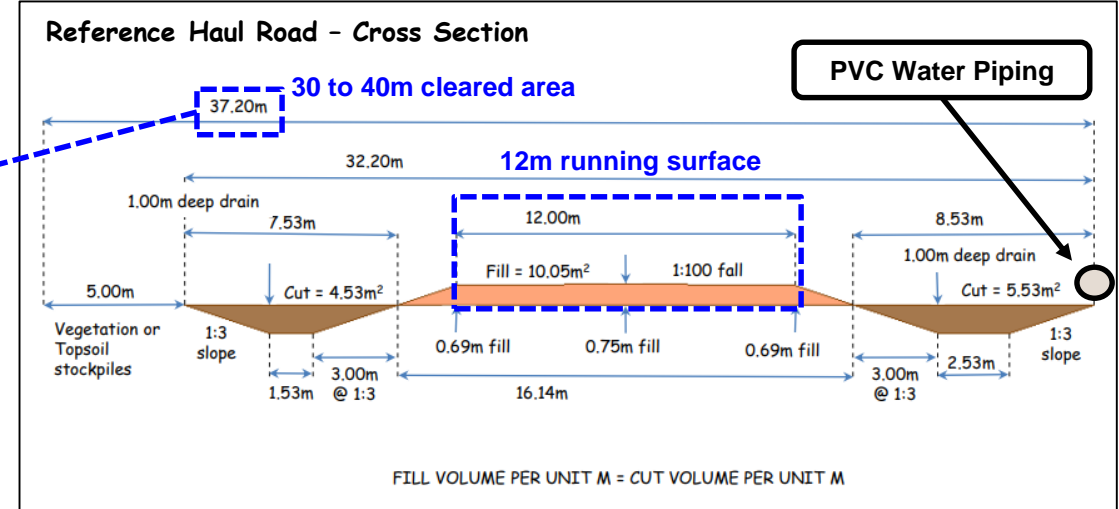
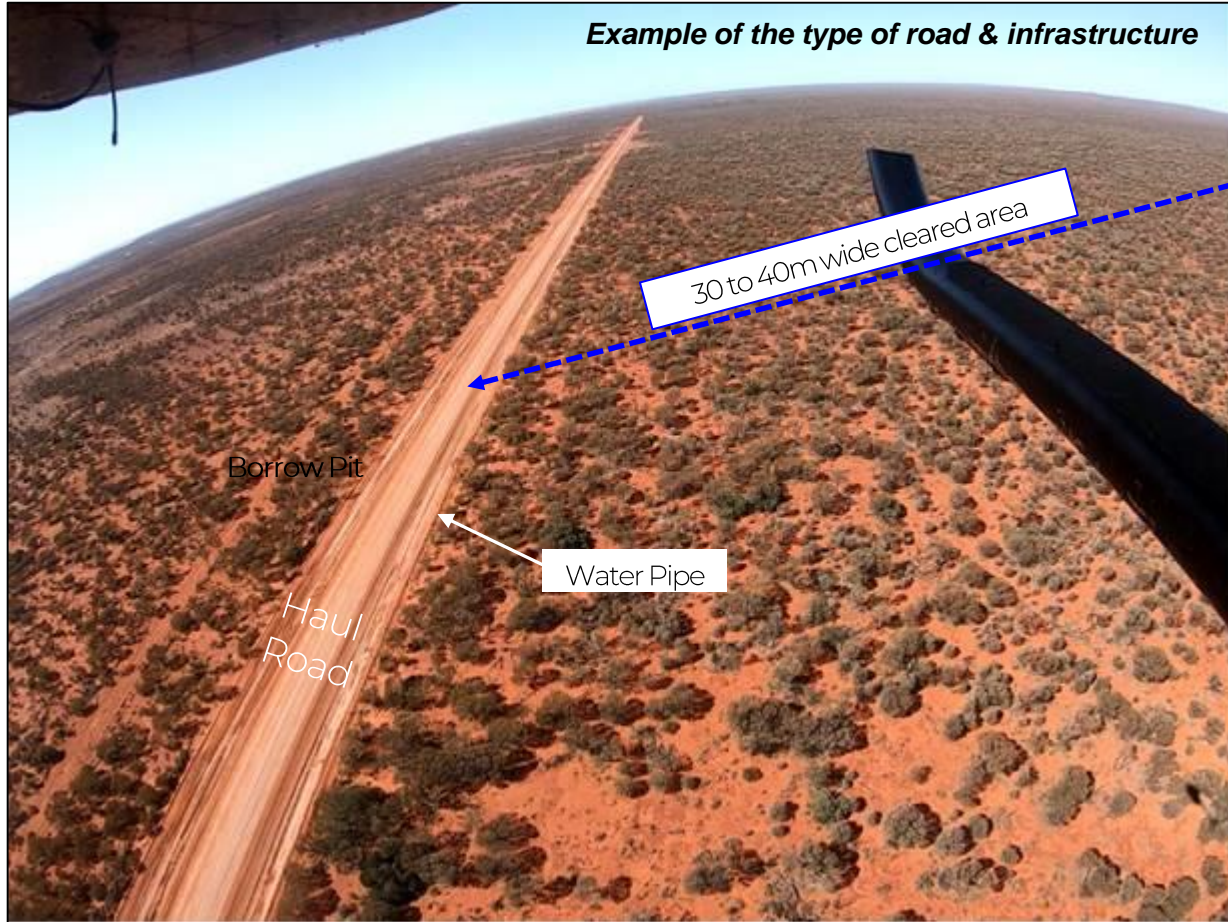
Our geographical footprint



- Murrin Murrin Operations consists of:
 - Nickel Cobalt Processing Plant
 - Murrin North & South Open Pit Mine Operations
- Murrin East
 - Nickel Cobalt Open Pit Mine
 - Located ~50km from Murrin Operations
- Irwin Hills Project
 - Brownfield & Exploration Site
 - Geology Drilling & Environmental Baseline Work Only to date
 - Prospective Deposits of Ni Co (laterite)
 - Minara in Scoping Studies to determine their feasibility for future mining
 - Located ~160km from Murrin Operations



- Irwin Hills Haul Road
 - Proposed haul road infrastructure would link Irwin Hills to Murrin East and North Operations. (via L39/300 or L39/298)
 - Primarily for road train haul truck access with payload capacities ranging from 90t to 350t.
 - Intended road would follow established guidelines and standards (our Murrin East Haul Road is an example).
 - Future Mining at Irwin would require a local camp to be established. One site being considered is on L39/304.



Quad Trailer Road Trains - nominally carry 350t of ore

Thank you.....

We appreciate the opportunity to meet with the Nyalpa Pirniku and we thank you for your time and consideration.

