

2<sup>nd</sup> August 2021

Heritage Operations  
Department of Planning, Lands and Heritage  
140 William Street  
PERTH WA 6000

To Whom it May Concern,

**RE: DPLH PLACE ID 157093 GNAMMA HOLE AT GNARABUP**

I am writing to clarify the boundary of DPLH Place ID 157093 as requested by Mr Shane Downs (Senior Planning Officer – Reform, Design and State Assessment) from DPLH.

Brad Goode & Associates were commissioned by Rowe Group, on behalf of 5 Start Margaret River Pty Ltd, to undertake a 'Due Diligence Risk Assessment Advice' report for a proposed hotel development at Gnarabup in the Shire of Augusta Margaret River in 2020.

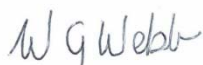
Following the submission of the draft Due Diligence report by Goode & Harris (2020) the Rowe Group requested a site inspection to identify the location of DPLH 'Lodged' Heritage Place ID 157093 Gnamma Hole that was recorded during a survey in 1999 by Roberts et al. from McDonald, Hales & Associates. The inspection was to assist in planning the resort development to avoid impact on the heritage place.

As such BGA archaeologist, Mrs Jacqueline Harris, visited Lot 503 Wallcliffe Road in Gnarabup on the 7 October 2020. The gnamma hole was located on a secondary 5m wide track at GPS coordinates 314789mE 6236306mN. The limestone gnamma hole measure 37cm wide (interior) in diameter, narrowing to 15cm wide. The hole extended to 25cm in depth. It contained a small amount of water that was relatively clean of debris. The limestone was a non-porous type and was relatively homogenous in appearance with one section smoother than the whole. There were no visible working of any edges and there was no lid in the vicinity. A search as made for associated artefacts, but none were located.

This location is some 15m NW of the DPLH grid reference and some 40m SE of the calculated position according to the initial location map. Comparing photographs from the Roberts et al. (1999) report, the location of the gnamma hole is on a similar low elevation in the landscape before the land rises in all directions so it is assumed that this is the same gnamma hole reported by Roberts et al. (ibid).

A second visit occurred on 19 October 2020 where Mrs Harris was accompanied by Dr Wayne Webb, as a representative of the Southwest Boojarah #2 Indigenous Land Use Agreement Group. Dr Webb inspected the gnamma hole and discussed its attributes and condition discussed on site with Mrs Harris and recommended a 7m radius extent around the gnamma hole, that includes the surrounding limestone platform, be determined as the heritage place boundary and an exclusion zone. Dr Webb advised this boundary would be adequate protection of this cultural feature under the Western Australian *Aboriginal Heritage Act 1972*.

Kind regards,



Dr Wayne Webb  
South West Boojarah #2 representative and Wadandi Pibelmen Traditional Owner

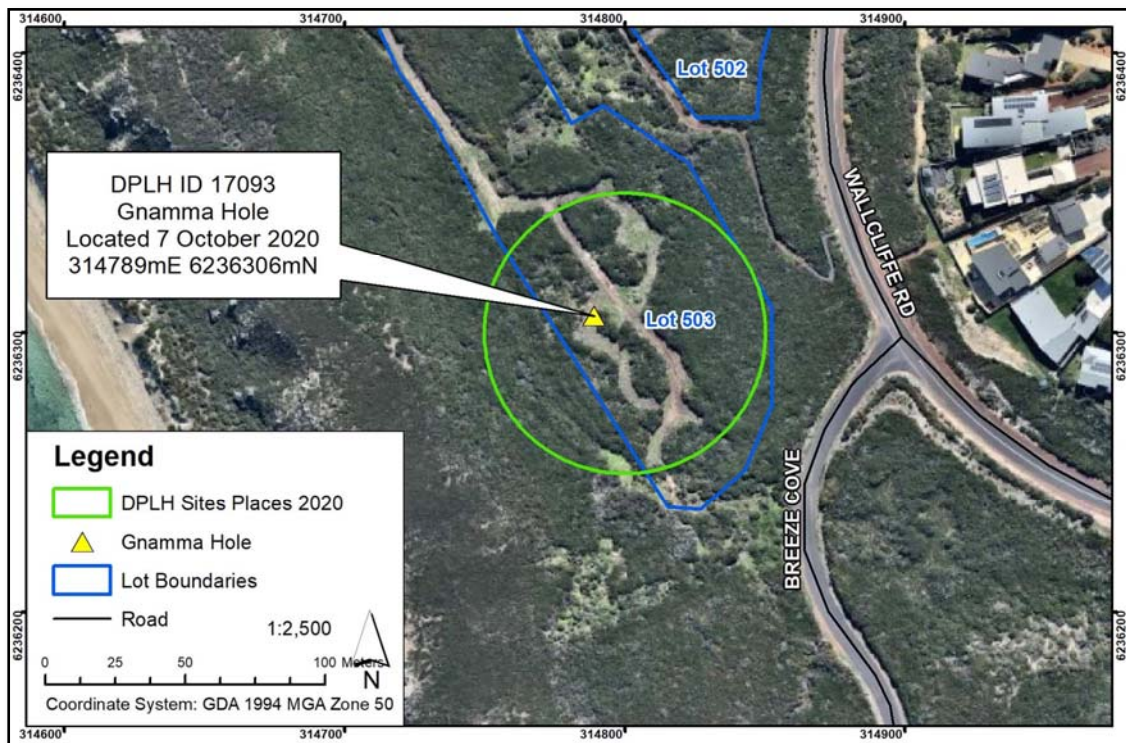


Figure 1: Location of DPLH Heritage Place ID 17093 Gnamma Hole from site inspection conducted on 7 October 2020.