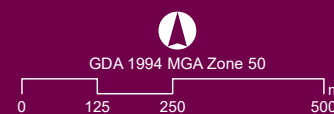


Figure D

Topography and geology

Document Path: G:\Jobs\C\_Jobs\C20078 - MRWA SR Bridge\Figures C20078-002\C20078-002\_G\_004\_FigD Topography and Geology\_200810.mxd



Job Number: C20078-002  
Doc Number: 004  
Date: 10.08.20  
Scale: 1:12,500 @ A3  
Created by: MA  
Source: Orthophoto - Landgate, Jan 2020







Figure E

Acid sulfate soil risk mapping

Document Path: G:\Jobs\C\_Jobs\C20078 - MRWA SR Bridge\Figures C20078-002\C20078-002\_G\_005\_FigE ASS Mapping\_200810.mxd



Job Number: C20078-002  
 Doc Number: 005  
 Date: 10.08.20  
 Scale: 1:10,000 @ A3  
 Created by: MA

Source: Orthophoto - Landgate, Jan 2020

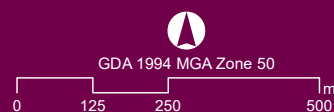






**Figure F**  
**Contaminated sites**

Document Path: G:\Jobs\C\_Jobs\C20078 - MRWA SR Bridge\Figures C20078-002\C20078-002\_G\_006\_FigF Contaminated sites\_200810.mxd

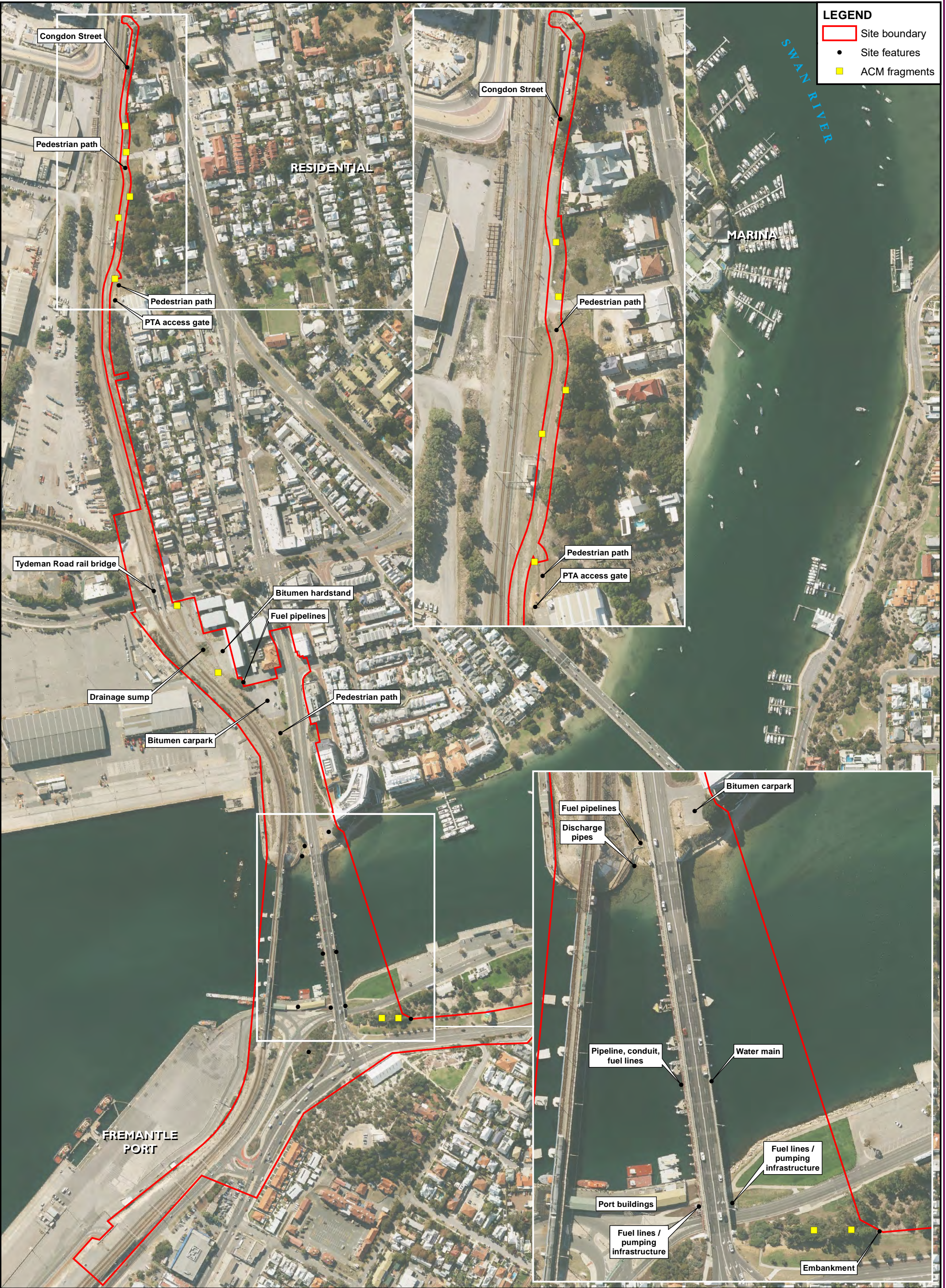


Job Number: C20078-002  
Doc Number: 006  
Date: 10.08.20  
Scale: 1:12,500 @ A3  
Created by: MA

Source: Orthophoto - Landgate, Jan 2020





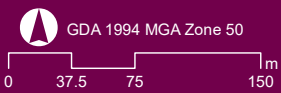


**Figure G**  
**Site features**





Figure H  
Proposed sampling locations



Job Number: C20078-002  
Doc Number: 008  
Date: 13.08.20  
Scale: 1:4,500 @ A3  
Created by: MA  
Source: Orthophoto - Landgate, Jan 2020





## Appendix A

### Certificate of Titles

## APPENDIX A: SITE LOT DETAILS

The following table presents the lot details and certificates of title for the site.

**Table A.1: Site lot details**

Reference Name	Swan River Crossing			
Address	Lot	Plan	Street/Road	Suburb
	500	59377	Stirling Hwy	Mosman Park
	507	59377	Irene St	North Fremantle
	5	26998	Congdon St	
	Unidentified land			
	66	5329		
	502	28235	Stirling Hwy	
	150	17633		
	2	D4767		
	1	D4767		
	P91	17633		
	13	13173		
	14	13173		
	Unidentified land			
	151	17633	Jackson St	
	Unidentified land			
	404	182261	Tydeman Rd	
	P Road Land ID No. 3886028			
	401	182212	Tydeman Rd	
	394	213630	Queen Victoria St	
	1908	D31903		
	395	213630		
	406	91139		
	P Road Land ID No. 3508756			
	P Road Land ID No. 3508759			
	300	49594	No address	
	302	49597	V Crown Land (Swan River / Bridge) Land ID No. 3877761	
	4565	220793	Port (Swan River / Bridge) Land ID No. 3033040	
	300	47450	Riverside Rd (Swan River)	East Fremantle
	2114	192891	Beach St	Fremantle
	2010	185898		
	301	49594	No address	
	P Road Land ID No. 3834477			
	1972	214292	Elder Pl	
	2158	58649	Phillimore St	
	76	D57658	Queen Victoria St	

## APPENDIX

	P Road Land ID No. 3886023			
	P Road Land ID No. 3864677			
	1941	213981	Beach St	
	Unidentified land			Fremantle / East Fremantle border
	P Road Land ID No. 3834339			East Fremantle
	P Road Land ID No. 3886026			
Certificate of Title	Lot	Volume	Folio	Current Owners
	500	LR3154	710	State of WA
	507	LR3154	717	
	5	795	106	
	66	1283	954	
	502	2219	133	WAPC
	150	2639	750	PTA
	2	1102	536	State of WA
	1	1102	536	
	91	1000	12	
	13	1096	138	
	14	1096	139	
	151	2655	122	
	404	LR3154	619	
	401	LR3148	764	
	394	LR3148	763	
	406	LR3137	945	
	300	LR3140	595	
	302	LR3140	594	
	4565	LR3117	615	
	300	LR3151	547	
	2114	LR3108	28	
	2010	LR3140	592	
	301	LR3140	596	
	1972	LR3128	856	
	2158	LR3159	719	
	76	1544	958	Major Holdings Pty Ltd
	1941	LR3037	561	State of WA

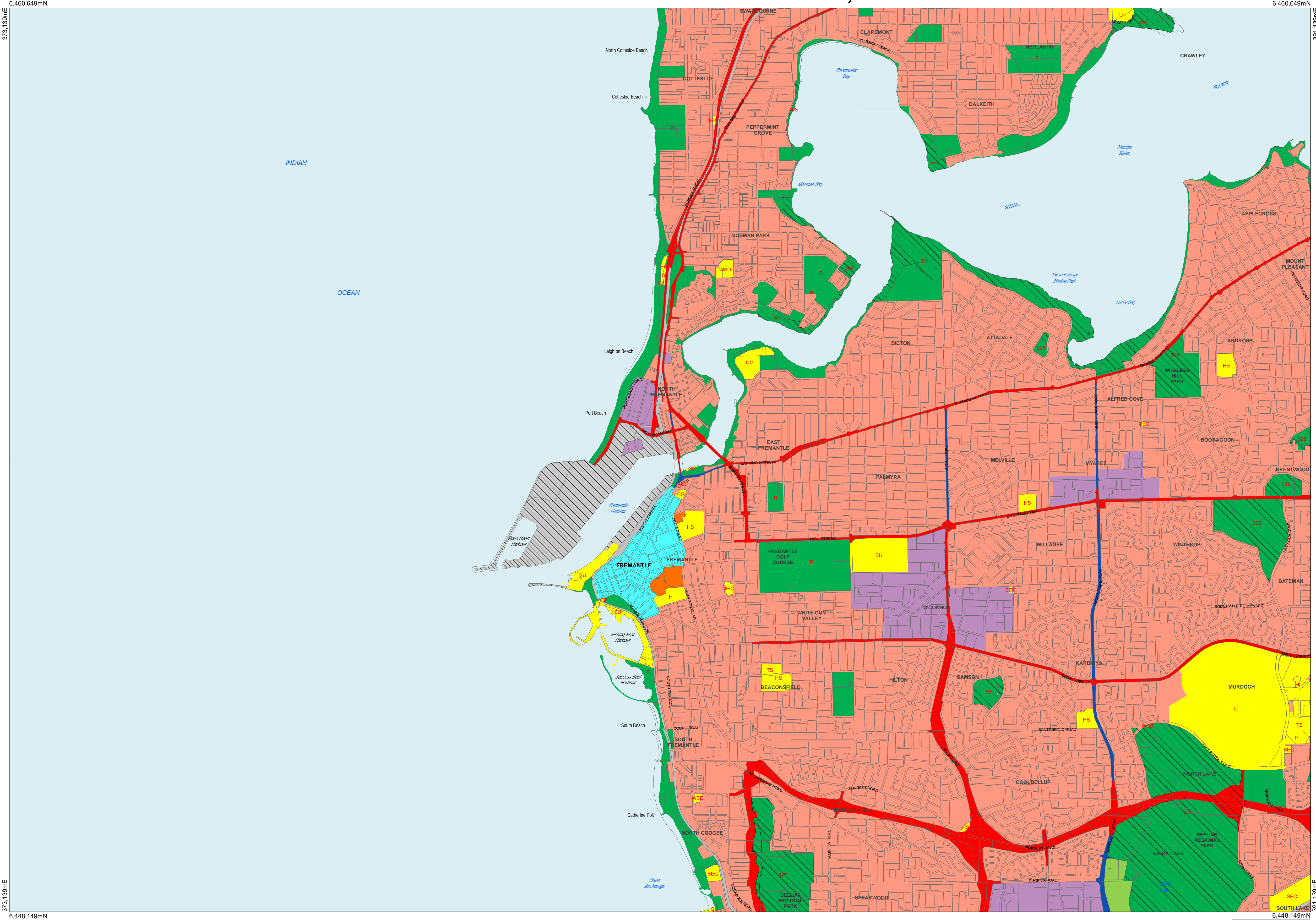


## Appendix B

### Town Planning



METROPOLITAN REGION SCHEME - Perth, Western Australia



Legend

Scheme boundary

Reserved lands

- Parks and recreation
- Restricted public access
- Railways
- Port installations
- State forests
- Civic and cultural
- Waterways
- Water catchments

Public purposes - denoted as follows:

- H Hospital
- HS High school
- TS Technical school
- CP Car park
- U University
- CG Commonwealth Government
- SEC State Energy Commission
- SU Special uses
- WSD Water Authority of WA
- P Prison

Reserved roads

- Primary regional roads
- Other regional roads

Zones

- Urban
- Urban deferred
- Central city area
- Industrial
- Special industrial
- Rural
- Rural - water protection
- Private recreation

Notice of delegation

- (Site No) Bush forever area

Redevelopment schemes

- Redevelopment scheme/act area

METROPOLITAN REGION SCHEME

This map has been derived from an electronic version of the scheme held and maintained by the Department of Planning, Lands and Heritage.

This map is one of a set of 38 which depicts the zones and reservations of the Metropolitan Region Scheme as adopted on 30 October 1963. The information shown is correct up to the date shown below as far as the Department and the Commission are aware.

Amended to: 9th July 2020

METROPOLITAN REGION SCHEME MAP 1:25000 MAP SERIES

MAP SHEET 19

MAP NAME: Fremantle

Important notes

This map series forms part of the Metropolitan Region Scheme (MRS), and should be read in conjunction with the Metropolitan Region Scheme Text (MRS Text).

Environmental condition areas are not shown on these maps; refer to the MRS Text for details of environmental conditions.

Redevelopment scheme areas are shown on these map, although they are not within the jurisdiction of the Western Australian Planning Commission. Refer to the relevant redevelopment authority's scheme and maps for details.

For Port Kennedy locality refer to the Port Kennedy Development Agreement Act 1992.

Production notes

Published by the Department of Planning, Lands and Heritage, Gordon Stephenson House, 140 William Street, Perth, WA 6000

The scheme is not intended to indicate the land use allocation under any local government provision.

© State of Western Australia. This map may not be reproduced wholly or in part without the written permission of the Department.

Data Sources

Cadastral data: generalised cadastre to show road casement and land parcels greater than 1 hectare. Generated from the Western Australian Land Information Authority Spatial Cadastral Database (SCDB) - permission no. SLIP 1096-2016-1

Technical notes

Horizontal datum - Geocentric datum of Australia 1994

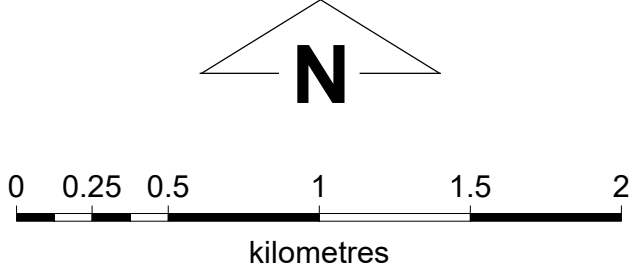
Grid base - Map Grid of Australia

Projection - Transverse Mercator, graphically projected in zone 50

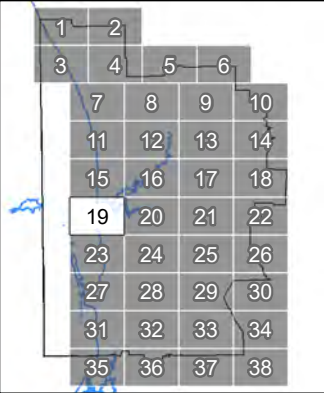
Contacts

Website - [www.dph.wa.gov.au](http://www.dph.wa.gov.au) - to access electronic copies of the MRS

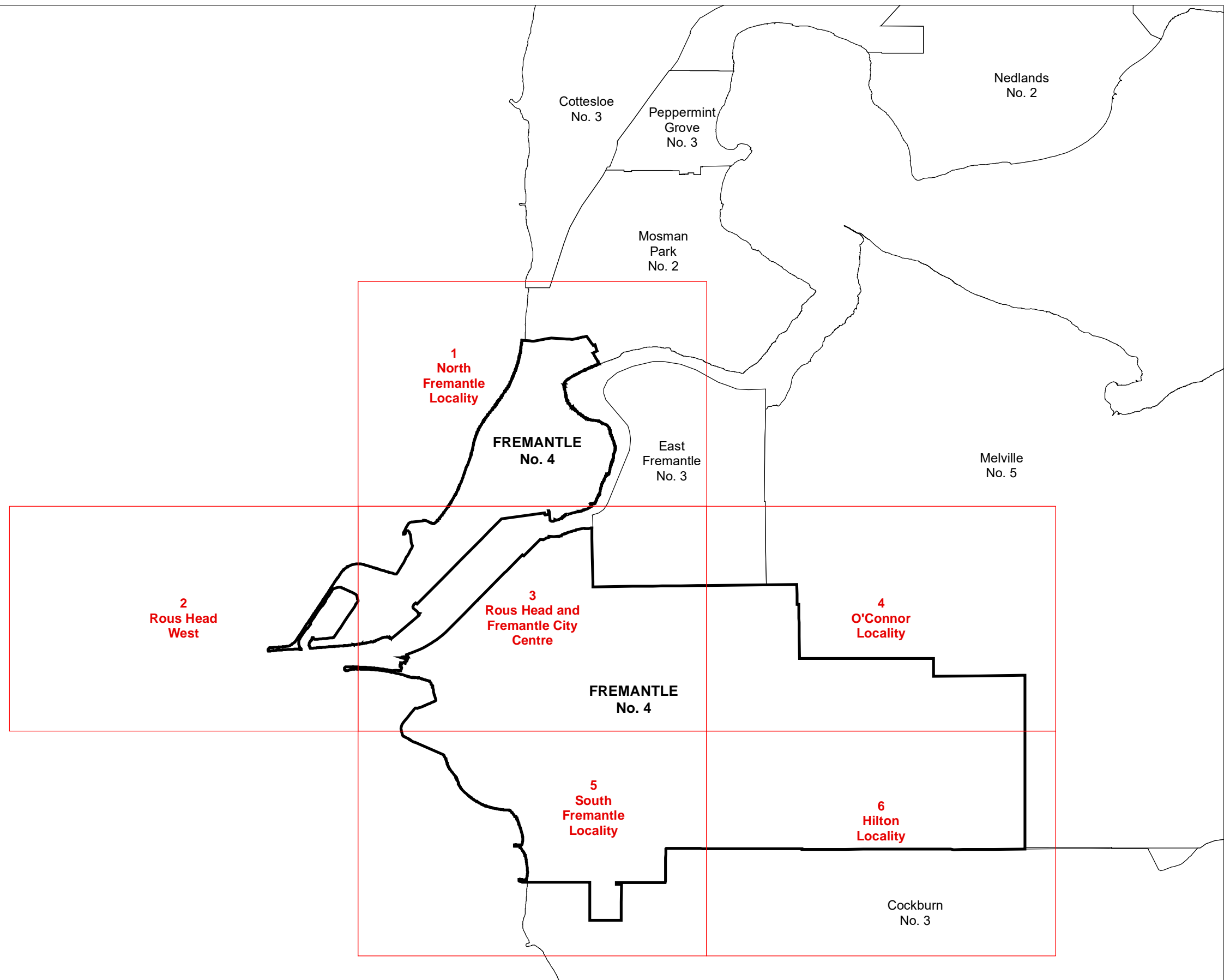
Email - [spatialdata@dph.wa.gov.au](mailto:spatialdata@dph.wa.gov.au) for digital data or for written permission



INDEX TO ADJOINING MAP SHEETS







Department of  
Planning

Produced by GeoSpatial Planning Support,  
Department of Planning, Perth WA

Whilst all care has been taken to accurately portray the  
current Scheme provisions, no responsibility shall be  
taken for any omission or errors in this documentation.

Consultation with the respective Local Government  
should be made to view a legal version of the Scheme.  
Please advise the Department of Planning of any omissions  
or errors in the document at [Spatialdata@planning.wa.gov.au](mailto:Spatialdata@planning.wa.gov.au)

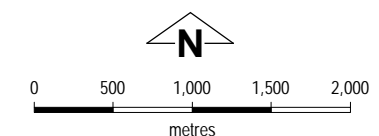
Base Information Supplied by the Western Australian  
Land Information Authority, LI 646-2014-3

## City of Fremantle

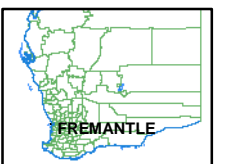
Town Planning Scheme No. 4

( District Scheme )

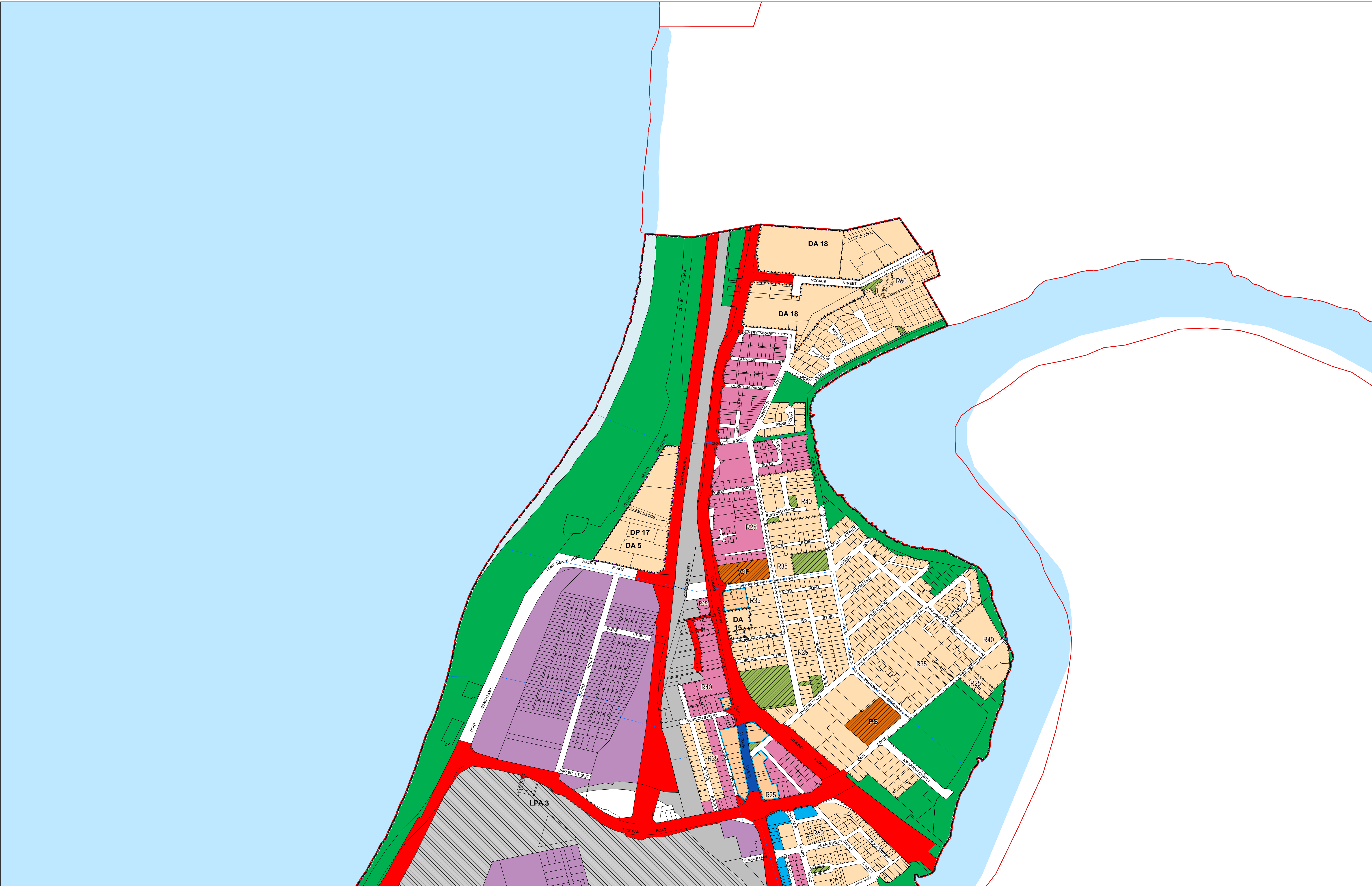
MAP SHEET INDEX



MAP OVERVIEW







LEGEND

REGION SCHEME RESERVES (MRS)

	Civic and Cultural		Public Purposes
	Other Regional Roads		Public Purposes - Car Park
	Parks and Recreation		Public Purposes - Commonwealth Government
	Parks and Recreation - restricted		Public Purposes - High School
	Port Installations		Public Purposes - Hospital
	Primary Regional Roads		Public Purposes - Prison
	Railways		Public Purposes - Special Uses
	State Forests		Public Purposes - State Energy Commission
	Waterways		Public Purposes - Technical School
	Water Catchments		Public Purposes - University
			Public Purposes - Water Authority of WA

LOCAL SCHEME RESERVES

	Community Facilities : Aged Persons		Community Facilities : Private Hospital
	Community Facilities : Community Facilities		Community facilities : Private Hospital/Aged Persons
	Community Facilities : High School		Open Space
	Community Facilities : Kindergarden		Public Utilities
	Community Facilities : Primary School		

LOCAL SCHEME ZONES

	City Centre		Local Centre
	Commercial		Mixed Use
	Development		Neighbourhood Centre
	Industrial		Residential

OTHER CATEGORIES

	Scheme Area Boundary
	Local Government Boundary
	R20 R Codes
	A1 Additional Uses
	SCA- Fremantle Port Buffer
	SCA 5.7 Special Control Area - General
	DA 1 SCA - Development Areas
	DP14 Development Plans
	LPA 1 SCA - Local Planning Areas
	No Zone
	Waterbodies

VERSION No 1



Department of Planning,  
Lands and Heritage

Whilst all care has been taken to accurately portray the current Scheme provisions, no responsibility shall be taken for any omission or errors in this documentation.

Consultation with the respective Local Government should be made to view a legal version of the Scheme. Please advise the Department of Planning, Lands and Heritage of any omissions or errors in the document at [Spatialdata@dph.wa.gov.au](mailto:Spatialdata@dph.wa.gov.au)

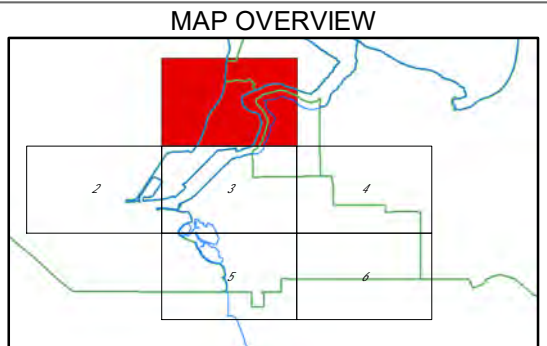
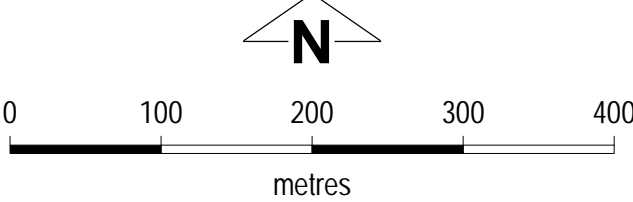
Produced by GeoSpatial Planning Support,  
Department of Planning, Lands and Heritage.

Base Information Supplied by the Western Australian  
Land Information Authority, SLIP 1096-2018-1

City of Fremantle

Town Planning Scheme No. 4

( District Scheme )



Authorised: T.Servaas

Plot Date: 29 October 2019

G.Gazette: Thursday, 8 March 2007

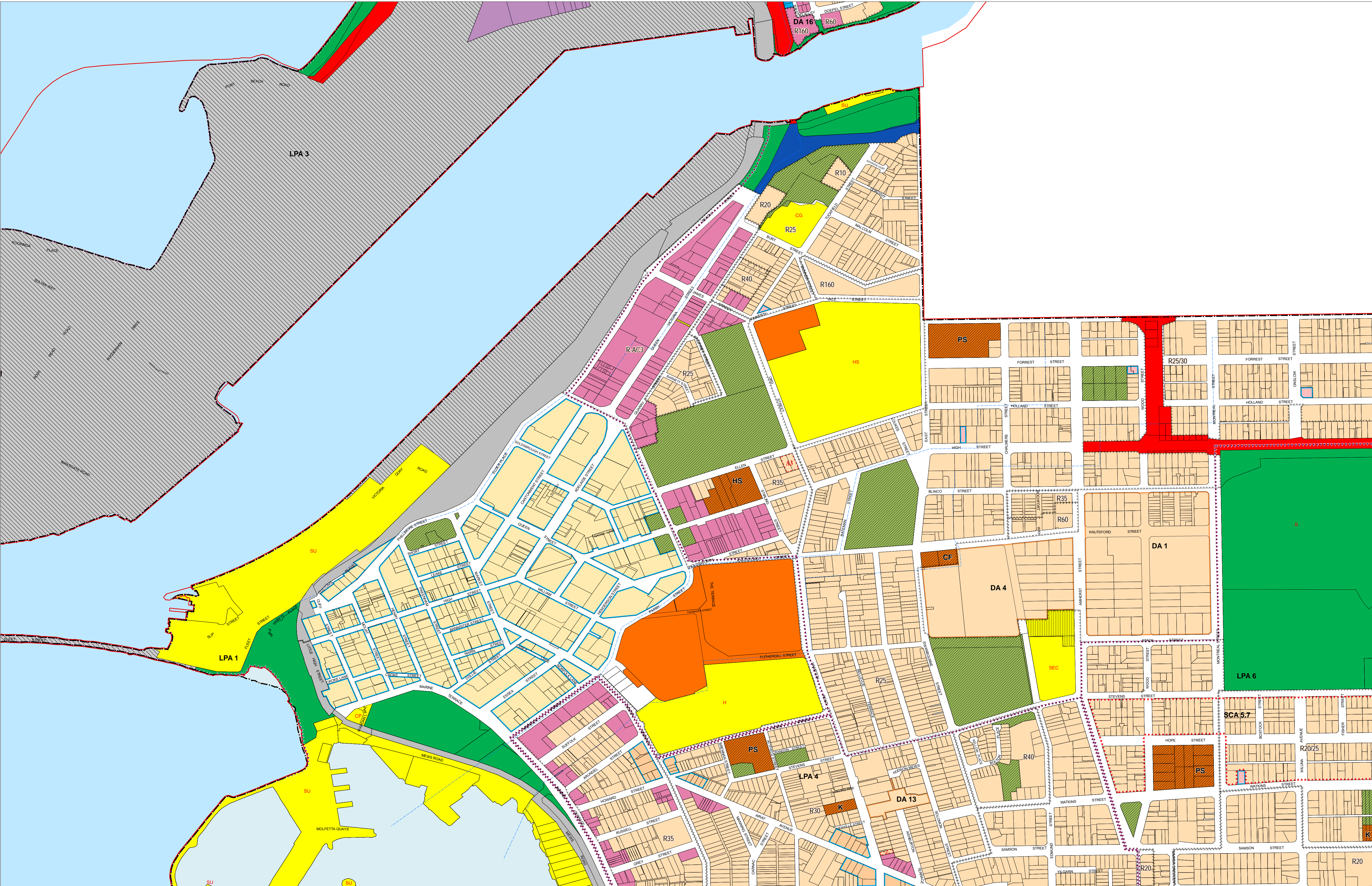
Town Planning Scheme Map No. 1 of 6  
MAP: North Fremantle Locality

City of Fremantle

Town Planning Scheme No. 4

( District Scheme )





## LEGEND

### REGION SCHEME RESERVES (MRS)

Civic and Cultural	Public Purposes
Other Regional Roads	Public Purposes - Car Park
Parks and Recreation	Public Purposes - Commonwealth Government
Parks and Recreation - restricted	Public Purposes - High School
Port Installations	Public Purposes - Hospital
Primary Regional Roads	Public Purposes - Prison
Railways	Public Purposes - Special Uses
State Forests	Public Purposes - State Energy Commission
Waterways	Public Purposes - Technical School
Water Catchments	Public Purposes - University
	Public Purposes - Water Authority of WA

### LOCAL SCHEME RESERVES

Community Facilities : Aged Persons	Community Facilities : Private Hospital
Community Facilities : Community Facilities	Community facilities : Private Hospital/Aged Persons
Community Facilities : High School	Open Space
Community Facilities : Kindergarden	Public Utilities
Community Facilities : Primary School	

### LOCAL SCHEME ZONES

City Centre	Local Centre
Commercial	Mixed Use
Development	Neighbourhood Centre
Industrial	Residential

### OTHER CATEGORIES

Scheme Area Boundary
Local Government Boundary
R20 R Codes
A1 Additional Uses
SCA - Fremantle Port Buffer
SCA 5.7 Special Control Area - General
DP14 Development Plans
LPA 1 SCA - Local Planning Areas
No Zone
Waterbodies

VERSION No 1



Department of Planning,  
Lands and Heritage

Whilst all care has been taken to accurately portray the current Scheme provisions, no responsibility shall be taken for any omission or errors in this documentation.

Consultation with the respective Local Government should be made to view a legal version of the Scheme. Please advise the Department of Planning, Lands and Heritage of any omissions or errors in the document at [Spatialdata@dph.wa.gov.au](mailto:Spatialdata@dph.wa.gov.au)

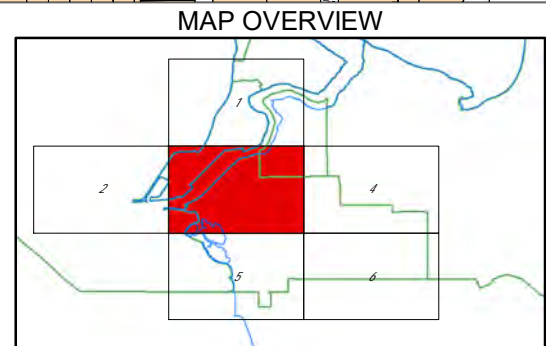
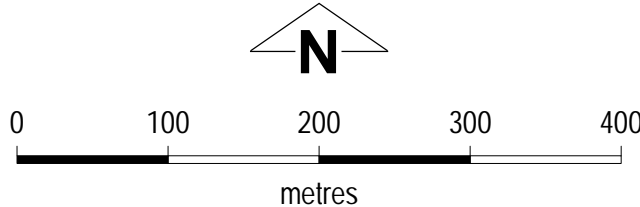
Produced by GeoSpatial Planning Support,  
Department of Planning, Lands and Heritage.

Base Information Supplied by the Western Australian  
Land Information Authority, SLIP 1096-2018-1

## City of Fremantle

Town Planning Scheme No. 4

( District Scheme )



Authorised: T.Servaas

Plot Date: 20 May 2020

G.Gazette: Thursday, 8 March 2007

Town Planning Scheme Map No. 3 of 6  
MAP: Rous Head and Fremantle City Centre

## City of Fremantle

Town Planning Scheme No. 4

( District Scheme )



**Appendix C**  
**Heritage**



## List of Registered Aboriginal Sites

### Search Criteria

2 Registered Aboriginal Sites in Custom search area - Polygon - 115.758143737581°E, 32.0424168395764°S (GDA94) : 115.758154466417°E, 32.0422349522455°S (GDA94) : 115.757682397631°E, 32.0423986508596°S (GDA94) : 115.757231786516°E, 32.0425259718015°S (GDA94) : 115.756770446566°E, 32.0425805378652°S (GDA94) : 115.755955055025°E, 32.042616915223°S (GDA94) : 115.755547359255°E, 32.0426623868998°S (GDA94) : 115.755300596026°E, 32.0427260472095°S (GDA94) : 115.754925086764°E, 32.0428624620098°S (GDA94) : 115.754592492846°E, 32.0430898195584°S (GDA94) : 115.754324271945°E, 32.0432717051907°S (GDA94) : 115.754034593371°E, 32.0435445329615°S (GDA94) : 115.753723457125°E, 32.0440356208999°S (GDA94) : 115.753498151568°E, 32.0444357646794°S (GDA94) : 115.75281150606°E, 32.0442084104738°S (GDA94) : 115.751813724307°E, 32.0450996357279°S (GDA94) : 115.751609876422°E, 32.0453269877199°S (GDA94) : 115.751073434619°E, 32.0450177888725°S (GDA94) : 115.751191451815°E, 32.0448904713965°S (GDA94) : 115.75134165552°E, 32.0449177537277°S (GDA94) : 115.751513316897°E, 32.0447904361126°S (GDA94) : 115.751459672717°E, 32.0447267772386°S (GDA94) : 115.752242877749°E, 32.0441993162938°S (GDA94) : 115.752886607913°E, 32.0437355119173°S (GDA94) : 115.753358676699°E, 32.0431625738546°S (GDA94) : 115.753530338076°E, 32.0420166869714°S (GDA94) : 115.753637626437°E, 32.0404342481705°S (GDA94) : 115.753659084109°E, 32.0392155697603°S (GDA94) : 115.75275786188°E, 32.0383970453034°S (GDA94) : 115.751835181979°E, 32.037360237153°S (GDA94) : 115.751878097323°E, 32.037360237153°S (GDA94) : 115.75164206293°E, 32.0363234172617°S (GDA94) : 115.752071216372°E, 32.0362324675883°S (GDA94) : 115.751792266635°E, 32.0353593461273°S (GDA94) : 115.751556232241°E, 32.0345407871963°S (GDA94) : 115.751534774569°E, 32.0334675544006°S (GDA94) : 115.751684978274°E, 32.0332310776867°S (GDA94) : 115.751792266635°E, 32.032776313059°S (GDA94) : 115.751792266635°E, 32.0323397368918°S (GDA94) : 115.75174935129°E, 32.0320486849573°S (GDA94) : 115.751684978274°E, 32.0316848687385°S (GDA94) : 115.751835181979°E, 32.0306297935305°S (GDA94) : 115.751942470339°E, 32.0302659716749°S (GDA94) : 115.751792266635°E, 32.0301568248364°S (GDA94) : 115.751878097323°E, 32.030011295516°S (GDA94) : 115.7520497587°E, 32.030138633684°S (GDA94) : 115.752135589388°E, 32.0302659716749°S (GDA94) : 115.751963928011°E, 32.0304660738743°S (GDA94) : 115.751835181979°E, 32.0317030595837°S (GDA94) : 115.751942470339°E, 32.0324306904316°S (GDA94) : 115.751921012667°E, 32.0329582191811°S (GDA94) : 115.751706435946°E, 32.0335221258632°S (GDA94) : 115.75174935129°E, 32.0345407871963°S (GDA94) : 115.752242877749°E, 32.0361960876936°S (GDA94) : 115.752586200503°E, 32.0373238577064°S (GDA94) : 115.752714946536°E, 32.0372874782454°S (GDA94) : 115.752822234896°E, 32.0376330825414°S (GDA94) : 115.75305826929°E, 32.0376876515215°S (GDA94) : 115.753187015322°E, 32.0380878230486°S (GDA94) : 115.753895118502°E, 32.0379604959343°S (GDA94) : 115.753744914797°E, 32.037360237153°S (GDA94) : 115.753980949191°E, 32.0373420474315°S (GDA94) : 115.755633189944°E, 32.0422167634926°S (GDA94) : 115.757843330172°E, 32.0419803093751°S (GDA94) : 115.757843330172°E, 32.0418166100129°S (GDA94) : 115.758143737582°E, 32.0417984211768°S (GDA94) : 115.758165195254°E, 32.0419803093751°S (GDA94) : 115.758293941287°E, 32.0420348757641°S (GDA94) : 115.758293941287°E, 32.0423804621392°S (GDA94) : 115.758143737581°E, 32.0424168395764°S (GDA94)

### Disclaimer

The *Aboriginal Heritage Act 1972* preserves all Aboriginal sites in Western Australia whether or not they are registered. Aboriginal sites exist that are not recorded on the Register of Aboriginal Sites, and some registered sites may no longer exist.

The information provided is made available in good faith and is predominately based on the information provided to the Department of Planning, Lands and Heritage by third parties. The information is provided solely on the basis that readers will be responsible for making their own assessment as to the accuracy of the information. If you find any errors or omissions in our records, including our maps, it would be appreciated if you email the details to the Department at [AboriginalHeritage@dplh.wa.gov.au](mailto:AboriginalHeritage@dplh.wa.gov.au) and we will make every effort to rectify it as soon as possible.

### South West Settlement ILUA Disclaimer

Your heritage enquiry is on land **within or adjacent to** the following Indigenous Land Use Agreement(s): Whadjuk People Indigenous Land Use Agreement.



On 8 June 2015, six identical Indigenous Land Use Agreements (ILUAs) were executed across the South West by the Western Australian Government and, respectively, the Yued, Whadjuk People, Gnaala Karla Booja, Ballardong People, South West Boojarah #2 and Wagyl Kaip & Southern Noongar groups, and the South West Aboriginal Land and Sea Council (SWALSC).

The ILUAs bind the parties (including 'the State', which encompasses all State Government Departments and certain State Government agencies) to enter into a Noongar Standard Heritage Agreement (NSHA) when conducting Aboriginal Heritage Surveys in the ILUA areas, unless they have an existing heritage agreement. It is also intended that other State agencies and instrumentalities enter into the NSHA when conducting Aboriginal Heritage Surveys in the ILUA areas. It is recommended a NSHA is entered into, and an 'Activity Notice' issued under the NSHA, if there is a risk that an activity will 'impact' (i.e. by excavating, damaging, destroying or altering in any way) an Aboriginal heritage site. The Aboriginal Heritage Due Diligence Guidelines, which are referenced by the NSHA, provide guidance on how to assess the potential risk to Aboriginal heritage.

Likewise, from 8 June 2015 the Department of Mines, Industry Regulation and Safety (DMIRS) in granting Mineral, Petroleum and related Access Authority tenures within the South West Settlement ILUA areas, will place a condition on these tenures requiring a heritage agreement or a NSHA before any rights can be exercised.

If you are a State Government Department, Agency or Instrumentality, or have a heritage condition placed on your mineral or petroleum title by DMIRS, you should seek advice as to the requirement to use the NSHA for your proposed activity. The full ILUA documents, maps of the ILUA areas and the NSHA template can be found at <https://www.wa.gov.au/organisation/departments/departments-of-the-premier-and-cabinet/south-west-native-title-settlement>.

Further advice can also be sought from the Department of Planning, Lands and Heritage at [AboriginalHeritage@dplh.wa.gov.au](mailto:AboriginalHeritage@dplh.wa.gov.au).

### Copyright

Copyright in the information contained herein is and shall remain the property of the State of Western Australia. All rights reserved.

### Coordinate Accuracy

Coordinates (Easting/Northing metres) are based on the GDA 94 Datum. Accuracy is shown as a code in brackets following the coordinates.



## List of Registered Aboriginal Sites

### Terminology (NB that some terminology has varied over the life of the legislation)

**Place ID/Site ID:** This is a unique ID assigned by the Department of Planning, Lands and Heritage to the place.

#### Status:

- **Registered Site:** The place has been assessed as meeting Section 5 of the *Aboriginal Heritage Act 1972*.
- **Other Heritage Place which includes:**
  - **Stored Data / Not a Site:** The place has been assessed as not meeting Section 5 of the *Aboriginal Heritage Act 1972*.
  - **Lodged:** Information has been received in relation to the place, but an assessment has not been completed at this *stage* to determine if it meets Section 5 of the *Aboriginal Heritage Act 1972*.

#### Access and Restrictions:

- **File Restricted = No:** Availability of information that the Department of Planning, Lands and Heritage holds in relation to the place is not restricted in any way.
- **File Restricted = Yes:** Some of the information that the Department of Planning, Lands and Heritage holds in relation to the place is restricted if it is considered culturally sensitive. This information will only be made available if the Department of Planning, Lands and Heritage receives written approval from the informants who provided the information. To request access please contact [AboriginalHeritage@dplh.wa.gov.au](mailto:AboriginalHeritage@dplh.wa.gov.au).
- **Boundary Restricted = No:** Place location is shown as accurately as the information lodged with the Registrar allows.
- **Boundary Restricted = Yes:** To preserve confidentiality the exact location and extent of the place is not displayed on the map. However, the shaded region (generally with an area of at least 4km<sup>2</sup>) provides a general indication of where the place is located. If you are a landowner and wish to find out more about the exact location of the place, please contact the Department of Planning, Lands and Heritage.
- **Restrictions:**
  - **No Restrictions:** *Anyone* can view the information.
  - **Male Access Only:** Only *males* can view restricted information.
  - **Female Access Only:** Only *females* can view restricted information.

**Legacy ID:** This is the former unique number that the former Department of Aboriginal Sites assigned to the place. This has been replaced by the Place ID / Site ID.

### Basemap Copyright

Map was created using ArcGIS software by Esri. ArcGIS and ArcMap are the intellectual property of Esri and are used herein under license. Copyright © Esri. All rights reserved. For more information about Esri software, please visit [www.esri.com](http://www.esri.com).

Satellite, Hybrid, Road basemap sources: Esri, DigitalGlobe, GeoEye, Earthstar Geographics, CNES/Airbus DS, USDA, USGS, AeroGRID, IGN, HERE, DeLorme, Intermap, INCREMENT P, NRCAN, Esri Japan, METI, Esri China (Hong Kong), Esri Korea, Esri (Thailand), MapmyIndia, NGCC, © OpenStreetMap contributors, and the GIS User Community.

Topographic basemap sources: Esri, HERE, DeLorme, Intermap, increment P Corp., GEBCO, USGS, FAO, NPS, NRCAN, GeoBase, IGN, Kadaster NL, Ordnance Survey, Esri Japan, METI, Esri China (Hong Kong), swisstopo, MapmyIndia, © OpenStreetMap contributors, and the GIS User Community.





## Aboriginal Heritage Inquiry System

### List of Registered Aboriginal Sites

ID	Name	File Restricted	Boundary Restricted	Restrictions	Status	Type	Knowledge Holders	Coordinate	Legacy ID
3536	SWAN RIVER	No	No	No Gender Restrictions	Registered Site	Mythological	*Registered Knowledge Holder names available from DAA	446787mE 6461614mN Zone 50 [Reliable]	S02548
3596	ROCKY BAY	Yes	Yes	No Gender Restrictions	Registered Site	Mythological, Named Place	*Registered Knowledge Holder names available from DAA	Not available when location is restricted	S02422

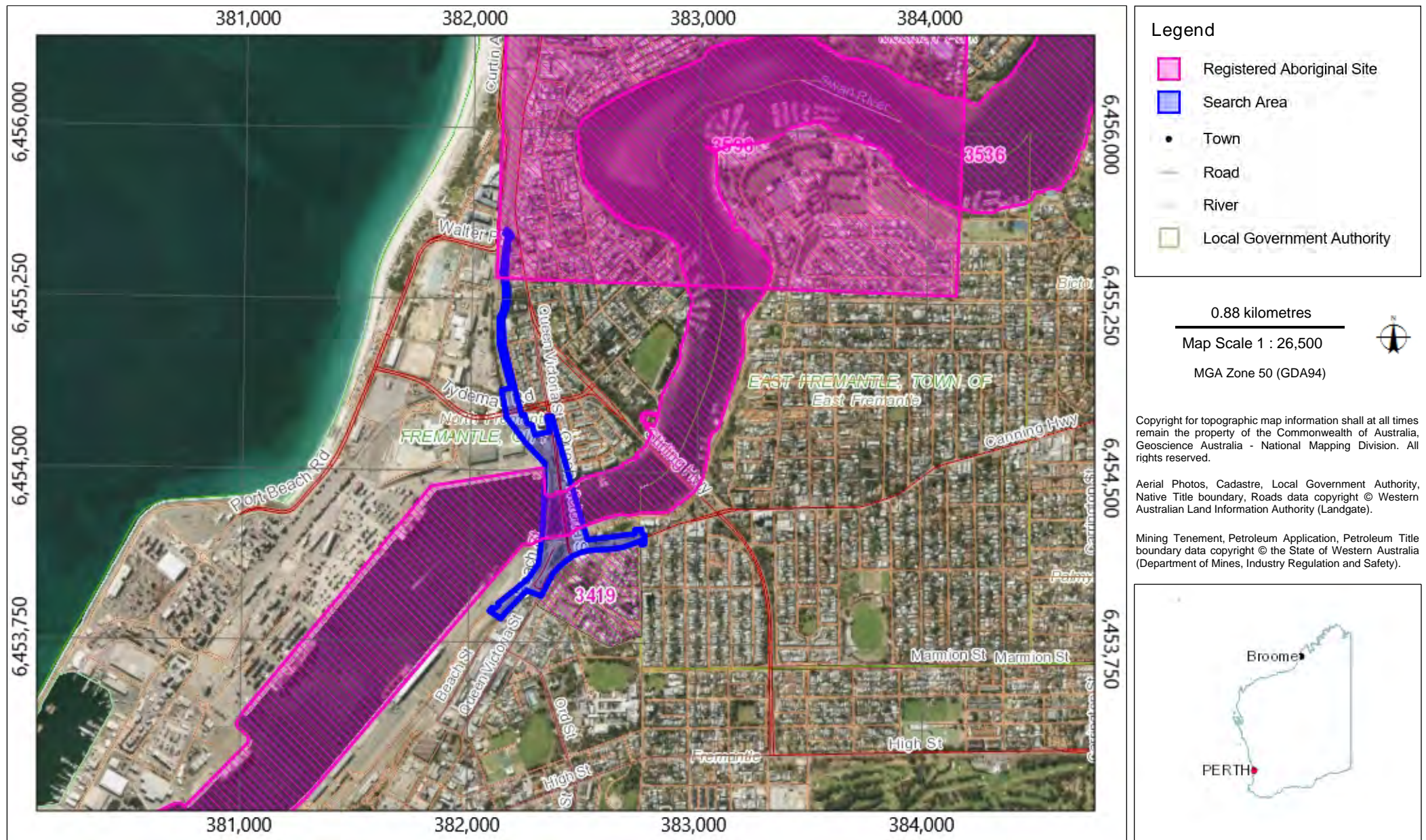




# Aboriginal Heritage Inquiry System

## Map of Registered Aboriginal Sites

For further important information on using this information please see the  
Department of Planning, Lands and Heritage's Disclaimer statement at  
<https://www.dplh.wa.gov.au/about-this-website>





## List of Other Heritage Places

### Search Criteria

1 Other Heritage Places in Custom search area - Polygon - 115.750693832328°E, 32.0453064496117°S (GDA94) : 115.752757633694°E, 32.0438151919736°S (GDA94) : 115.753143871792°E, 32.0433422913855°S (GDA94) : 115.753336990841°E, 32.0429057655974°S (GDA94) : 115.753615940579°E, 32.0402683780138°S (GDA94) : 115.753701771267°E, 32.0399591620794°S (GDA94) : 115.753615940579°E, 32.0393225377494°S (GDA94) : 115.753186787137°E, 32.0386859089925°S (GDA94) : 115.752457226285°E, 32.038122034111°S (GDA94) : 115.751766932029°E, 32.037288220569°S (GDA94) : 115.751852762718°E, 32.037288220569°S (GDA94) : 115.751552355308°E, 32.0361604501173°S (GDA94) : 115.751895678062°E, 32.0360876902563°S (GDA94) : 115.751487982292°E, 32.03455971982°S (GDA94) : 115.751423609276°E, 32.0336138205821°S (GDA94) : 115.751509439964°E, 32.0325223862433°S (GDA94) : 115.751681101341°E, 32.0320676180963°S (GDA94) : 115.751638185997°E, 32.0314127479971°S (GDA94) : 115.751766932029°E, 32.0305031984241°S (GDA94) : 115.751917135734°E, 32.0299756555327°S (GDA94) : 115.751809847374°E, 32.0298119347072°S (GDA94) : 115.751831305046°E, 32.0297027873276°S (GDA94) : 115.7521746278°E, 32.0300302290762°S (GDA94) : 115.751981508751°E, 32.0302485229249°S (GDA94) : 115.75187422039°E, 32.0306669180139°S (GDA94) : 115.751788389702°E, 32.0315764659609°S (GDA94) : 115.751852762718°E, 32.0321403811516°S (GDA94) : 115.751616728325°E, 32.0325769582692°S (GDA94) : 115.751552355308°E, 32.0337593441777°S (GDA94) : 115.751620160976°E, 32.03456881468°S (GDA94) : 115.752457010189°E, 32.0373336946151°S (GDA94) : 115.752650129238°E, 32.037297315158°S (GDA94) : 115.75277887527°E, 32.037715678042°S (GDA94) : 115.75307928268°E, 32.037715678042°S (GDA94) : 115.753250944057°E, 32.038170418139°S (GDA94) : 115.753358232418°E, 32.0381886076959°S (GDA94) : 115.753873216549°E, 32.0380794703003°S (GDA94) : 115.753765928188°E, 32.0376247297516°S (GDA94) : 115.754130708614°E, 32.0375701607339°S (GDA94) : 115.754280912319°E, 32.0380612807217°S (GDA94) : 115.754366743007°E, 32.0388434293376°S (GDA94) : 115.755672012259°E, 32.0422871684357°S (GDA94) : 115.757839237143°E, 32.0420507145001°S (GDA94) : 115.757839237143°E, 32.0418779208533°S (GDA94) : 115.758236204077°E, 32.041777882277°S (GDA94) : 115.75831130593°E, 32.0419415817084°S (GDA94) : 115.758515153815°E, 32.0418415432018°S (GDA94) : 115.758611713339°E, 32.0421962246866°S (GDA94) : 115.758279119422°E, 32.0422689796931°S (GDA94) : 115.758279119422°E, 32.0425690934837°S (GDA94) : 115.757892881323°E, 32.0426145651843°S (GDA94) : 115.757860694815°E, 32.0424508669564°S (GDA94) : 115.756862913062°E, 32.0425872821667°S (GDA94) : 115.755403791358°E, 32.0427055085178°S (GDA94) : 115.754127059867°E, 32.0434421461892°S (GDA94) : 115.753461872031°E, 32.0444970737655°S (GDA94) : 115.752914701392°E, 32.0443060963986°S (GDA94) : 115.751283918311°E, 32.0456611176712°S (GDA94) : 115.750693832328°E, 32.0453064496117°S (GDA94)

### Disclaimer

The Aboriginal Heritage Act 1972 preserves all Aboriginal sites in Western Australia whether or not they are registered. Aboriginal sites exist that are not recorded on the Register of Aboriginal Sites, and some registered sites may no longer exist.

The information provided is made available in good faith and is predominately based on the information provided to the Department of Planning, Lands and Heritage by third parties. The information is provided solely on the basis that readers will be responsible for making their own assessment as to the accuracy of the information. If you find any errors or omissions in our records, including our maps, it would be appreciated if you email the details to the Department at [AboriginalHeritage@dplh.wa.gov.au](mailto:AboriginalHeritage@dplh.wa.gov.au) and we will make every effort to rectify it as soon as possible.

### South West Settlement ILUA Disclaimer

Your heritage enquiry is on land within or adjacent to the following Indigenous Land Use Agreement(s): Whadjuk People Indigenous Land Use Agreement.



On 8 June 2015, six identical Indigenous Land Use Agreements (ILUAs) were executed across the South West by the Western Australian Government and, respectively, the Yued, Whadjuk People, Gnaala Karla Booja, Ballardong People, South West Boojarah #2 and Wagyl Kaip & Southern Noongar groups, and the South West Aboriginal Land and Sea Council (SWALSC).

The ILUAs bind the parties (including 'the State', which encompasses all State Government Departments and certain State Government agencies) to enter into a Noongar Standard Heritage Agreement (NSHA) when conducting Aboriginal Heritage Surveys in the ILUA areas, unless they have an existing heritage agreement. It is also intended that other State agencies and instrumentalities enter into the NSHA when conducting Aboriginal Heritage Surveys in the ILUA areas. It is recommended a NSHA is entered into, and an 'Activity Notice' issued under the NSHA, if there is a risk that an activity will 'impact' (i.e. by excavating, damaging, destroying or altering in any way) an Aboriginal heritage site. The Aboriginal Heritage Due Diligence Guidelines, which are referenced by the NSHA, provide guidance on how to assess the potential risk to Aboriginal heritage.

Likewise, from 8 June 2015 the Department of Mines, Industry Regulation and Safety (DMIRS) in granting Mineral, Petroleum and related Access Authority tenures within the South West Settlement ILUA areas, will place a condition on these tenures requiring a heritage agreement or a NSHA before any rights can be exercised.

If you are a State Government Department, Agency or Instrumentality, or have a heritage condition placed on your mineral or petroleum title by DMIRS, you should seek advice as to the requirement to use the NSHA for your proposed activity. The full ILUA documents, maps of the ILUA areas and the NSHA template can be found at <https://www.wa.gov.au/organisation/departments-of-the-premier-and-cabinet/south-west-native-title-settlement>.

Further advice can also be sought from the Department of Planning, Lands and Heritage at [AboriginalHeritage@dplh.wa.gov.au](mailto:AboriginalHeritage@dplh.wa.gov.au).

### Copyright

Copyright in the information contained herein is and shall remain the property of the State of Western Australia. All rights reserved.

### Coordinate Accuracy

Coordinates (Easting/Northing metres) are based on the GDA 94 Datum. Accuracy is shown as a code in brackets following the coordinates.



Terminology (NB that some terminology has varied over the life of the legislation)

Place ID/Site ID: This a unique ID assigned by the Department of Planning, Lands and Heritage to the place.

Status:

- Registered Site: The place has been assessed as meeting Section 5 of the Aboriginal Heritage Act 1972.
- Other Heritage Place which includes:
  - Stored Data / Not a Site: The place has been assessed as not meeting Section 5 of the Aboriginal Heritage Act 1972.
  - Lodged: Information has been received in relation to the place, but an assessment has not been completed at this stage to determine if it meets Section 5 of the Aboriginal Heritage Act 1972.

Access and Restrictions:

- File Restricted = No: Availability of information that the Department of Planning, Lands and Heritage holds in relation to the place is not restricted in any way.
- File Restricted = Yes: Some of the information that the Department of Planning, Lands and Heritage holds in relation to the place is restricted if it is considered culturally sensitive. This information will only be made available if the Department of Planning, Lands and Heritage receives written approval from the informants who provided the information. To request access please contact [AboriginalHeritage@dplh.wa.gov.au](mailto:AboriginalHeritage@dplh.wa.gov.au).
- Boundary Restricted = No: Place location is shown as accurately as the information lodged with the Registrar allows.
- Boundary Restricted = Yes: To preserve confidentiality the exact location and extent of the place is not displayed on the map. However, the shaded region (generally with an area of at least 4km<sup>2</sup>) provides a general indication of where the place is located. If you are a landowner and wish to find out more about the exact location of the place, please contact the Department of Planning, Lands and Heritage.
- Restrictions:
  - No Restrictions: Anyone can view the information.
  - Male Access Only: Only males can view restricted information.
  - Female Access Only: Only females can view restricted information.

Legacy ID: This is the former unique number that the former Department of Aboriginal Sites assigned to the place. This has been replaced by the Place ID / Site ID.

Basemap Copyright

Map was created using ArcGIS software by Esri. ArcGIS and ArcMap are the intellectual property of Esri and are used herein under license. Copyright © Esri. All rights reserved. For more information about Esri software, please visit [www.esri.com](http://www.esri.com).

Satellite, Hybrid, Road basemap sources: Esri, DigitalGlobe, GeoEye, Earthstar Geographics, CNES/Airbus DS, USDA, USGS, AeroGRID, IGN, HERE, DeLorme, Intermap, INCREMENT P, NRCAN, Esri Japan, METI, Esri China (Hong Kong), Esri Korea, Esri (Thailand), MapmyIndia, NGCC, © OpenStreetMap contributors, and the GIS User Community.

Topographic basemap sources: Esri, HERE, DeLorme, Intermap, increment P Corp., GEBCO, USGS, FAO, NPS, NRCAN, GeoBase, IGN, Kadaster NL, Ordnance Survey, Esri Japan, METI, Esri China (Hong Kong), swisstopo, MapmyIndia, © OpenStreetMap contributors, and the GIS User Community.





## Aboriginal Heritage Inquiry System

### List of Other Heritage Places

ID	Name	File Restricted	Boundary Restricted	Restrictions	Status	Type	Knowledge Holders	Coordinate	Legacy ID
21253	Mosman Park	No	No	No Gender Restrictions	Stored Data / Not a Site	Artefacts / Scatter, Ceremonial, Grinding Patches / Grooves, Historical, Mythological, Water Source	*Registered Knowledge Holder names available from DAA	382770mE 6456397mN Zone 50 [Reliable]	





# Aboriginal Heritage Inquiry System

## Map of Other Heritage Places

For further important information on using this information please see the  
Department of Planning, Lands and Heritage's Disclaimer statement at  
<https://www.dplh.wa.gov.au/about-this-website>

