



Mr Kees Visser  
Mining and Raw Materials Manager  
Simcoa Operations  
PO Box 1389  
BUNBURY WA 6231

### **SIMCOA OPERATIONS MOORA QUARRY – COOMBERDALE CHERT TEC**

I refer to your letter dated 11 June 2014 regarding the agreement for relinquishing Cairn Hill North and resource access north of Kiaka Road.

I can advise that the department is agreeable to the two requests that you have included in your letter of support. Specifically, the department will:

- meet with representatives of Simcoa on site, or where mutually agreed, to discuss practical conservation and environmental matters associated with flora, vegetation and other conservation matters annually, or as required; and
- attend a briefing of the EPA, if invited, on the mining and conservation issues in the area to the north of Kiaka Road.

The department will now progress this matter, initially through seeking the support of the Department of Mines and Petroleum.

I would like to thank Simcoa Operations for your cooperation in this matter to seek a mutually agreeable outcome to the issue of conservation and resource access at the Moora quarry operations.

Yours sincerely

Dr Ken Atkins  
Manager, Species and Communities Branch  
for Director General

25 June 2014



Government of **Western Australia**  
Department of **Mines, Industry Regulation and Safety**

Your ref:

Our ref: A2826/201901:23058

Enquiries: Mark FLEMING – 922 23624

Email: Mark.FLEMING@dmirs.wa.gov.au

Attention: Drew Harris

SIMCOA OPERATIONS PTY LTD  
973 Marriott Road  
WELLESLEY WA 6233

Dear Sir/Madam

**DBCA PROPOSED ACQUISITION OF 71HA OF LOT 52 FOR INCLUSION INTO THE CAIRN HILL NATURE RESERVE (R 47694)**

The Department of Biodiversity Conservation and Attractions has asked for the Minister for Mines and Petroleum's approval for a land tenure change under Section 16(3) of the *Mining Act 1978* to proposed land tenure Reserve for the purpose of Conservation of Flora and Fauna, under the management of Conservation Commission of WA with a reserve class of Class A for the parcel of land shown as FNA0014966 in TENGRAPH® and on the attached plan.

The proposal affects the following mining tenement(s) M70/191, M70/424.

DBCA are proposing a land exchange, whereby 71ha of Lot 52 owned by Gardiner, affecting both M70/191 and M70/424, will be added to the adjacent Cairn Hill Nature Reserve (R 47694). Gardiner will then be granted grazing access to Lot 4358 (57ha) to the east of Cairn Hill to offset the loss of the 71ha. DBCA has indicated that negotiations have been conducted with both Gardiner and Simcoa, with the latter supporting the land exchange proposal subject to "... a strategic outcome for resource access and conservation of the Coomberdale Chert TEC and associated Declared Rare Fauna can be established at the Moora mine site" (letter from Simcoa to the Department of Parks and Wildlife - 11 June 2014).

If the proposed reserve is created Section 24 of the *Mining Act 1978* will apply.

The Geoscience and Resource Strategy Division is assessing the impact that the proposal may have on access to potential or defined mineral resources and mining-related infrastructure within this tenement and the surrounding area.

If you have any concerns regarding the impact this proposal may have on such access, Mark FLEMING would appreciate your comments and relevant information by 13/02/2020. If no comments are received by this date, it may be assumed that your company has no concerns and the proposal will be assessed with the information on hand at the Department.

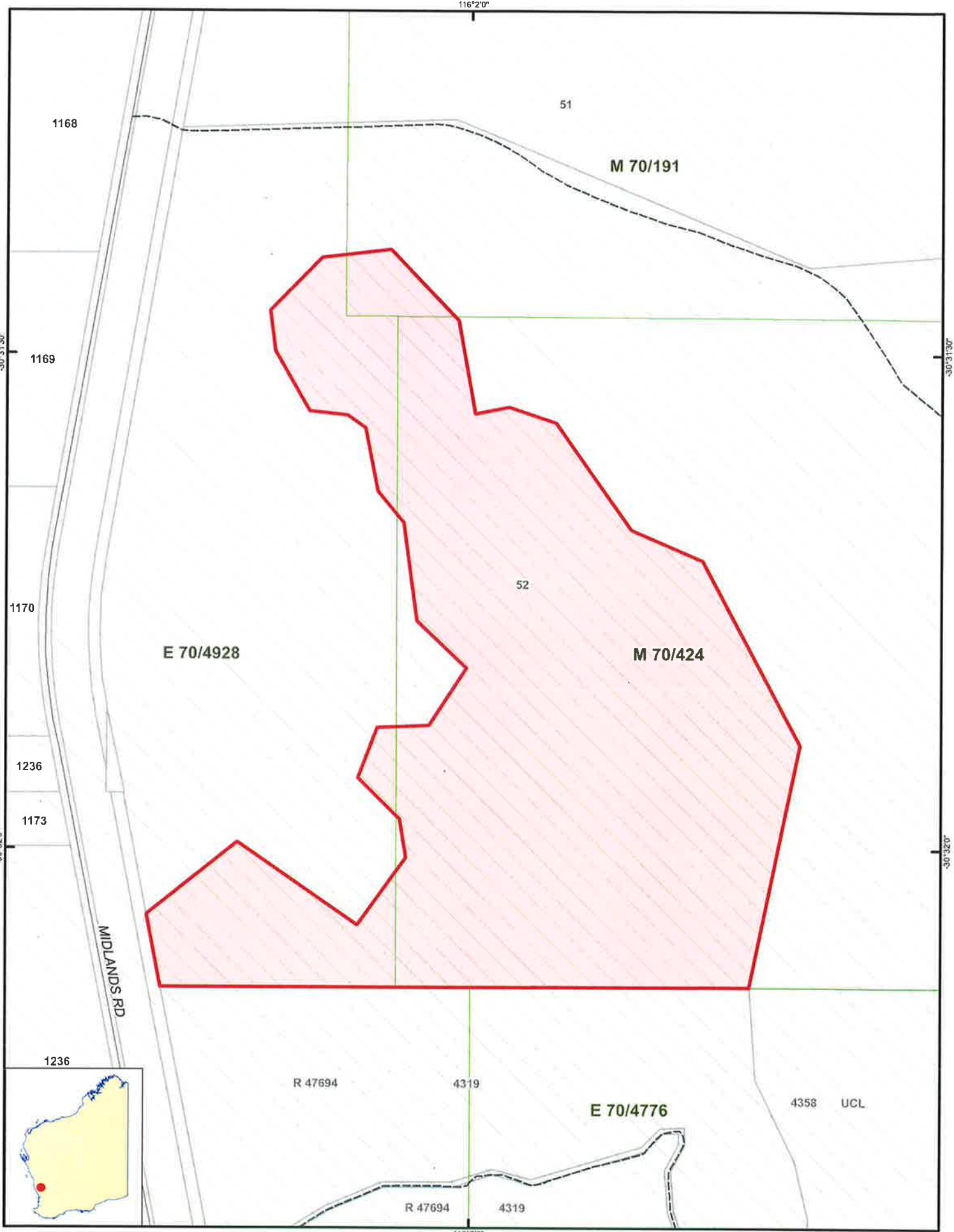
If you have concerns, please state them in your response. If you have no concerns, please respond with "no comments".

Please use the **Communications Manager** web page for your response. This can be accessed from the email message you received for A2826/201901:23058.

Yours sincerely

Jeffrey Haworth  
EXECUTIVE DIRECTOR  
GEOSCIENCE AND RESOURCE STRATEGY DIVISION

30 January 2020



- Legend**
- Proposal Area
  - Main Road
  - Track
  - Tenements - Live
  - Cadastre
  - Coastline



Government of Western Australia  
Department of Mines and Petroleum

Geological Survey of Western Australia



Scale: 1:9,059  
 0 90 180 Metres  
 Latitude/Longitude  
 GEOCENTRIC DATUM OF AUSTRALIA 1994  
 Map created: 22/01/2020, 02:46 PM

**Proposal**  
**Ref: A2826/201901:23058**  
 Centroid lat/long  
 -30.5310, 116.0341

406000

408000

6624000

6624000

6622000

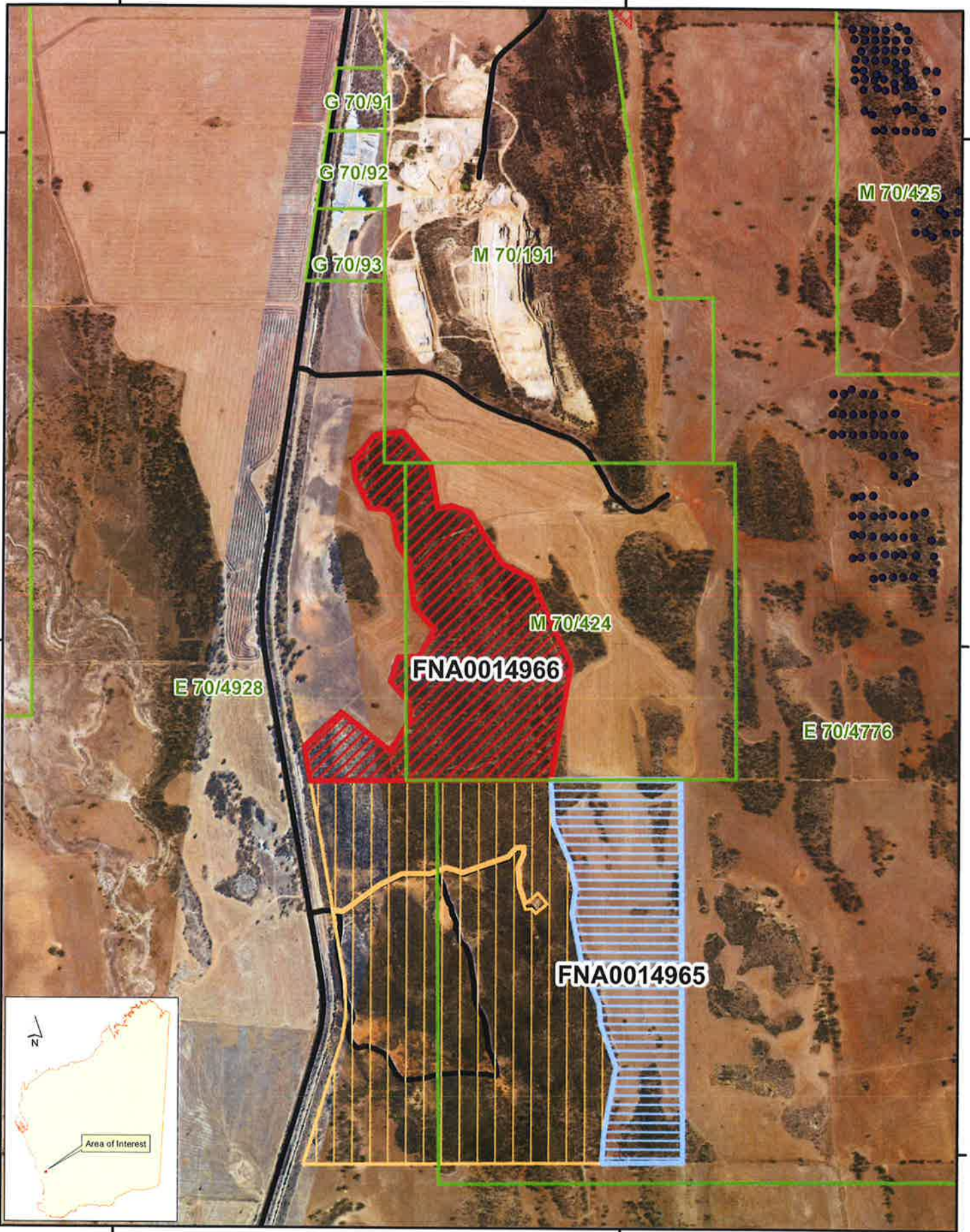
6622000

6620000




6620000

406000

408000



**Legend**

-  FNA0014965 Lot 4358 57ha
-  FNA0014966 71ha Part of Lot 52
-  CLASS 'A' NATURE RESERVE R 47694

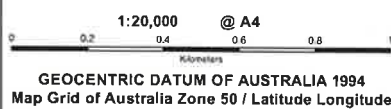
Data Source:

Date: 30 January 2020

Reference: A2825/001901



Government of Western Australia  
 Department of Mines, Industry Regulation and Safety



**DBCAs PROPOSED LAND EXCHANGE**

Cairn Hill, Shire of Moora

# Offsets Assessment Guide

For use in determining offsets under the Environment Protection and Biodiversity Conservation Act 1999  
2 October 2012

This guide relies on Macros being enabled in your browser.

Matter of National Environmental Significance	
Name	Coomberdale TEC
EPBC Act status	Endangered
Annual probability of extinction Based on IUCN category definitions	1.2%

Key to Cell Colours
User input required
Drop-down list
Calculated output
Not applicable to attribute

Impact calculator							
Impact calculator	Protected matter attributes	Attribute relevant to case?	Description	Quantum of impact	Units	Information source	
	<i>Ecological communities</i>						
	Area of community	Yes		Area	17.12	Hectares	
				Quality	4	Scale 0-10	
				Total quantum of impact	6.85	Adjusted hectares	
	<i>Threatened species habitat</i>						
	Area of habitat	No		Area			
				Quality			
				Total quantum of impact	0.00		
	Protected matter attributes	Attribute relevant to case?	Description	Quantum of impact	Units	Information source	
Number of features e.g. Nest hollows, habitat trees	No						
Condition of habitat Change in habitat condition, but no change in extent	No						
<i>Threatened species</i>							
Birth rate e.g. Change in nest success	No						
Mortality rate e.g. Change in number of road kills per year	No						
Number of individuals e.g. Individual plants/animals	No						

Offset calculator																			
Offset calculator	Protected matter attributes	Attribute relevant to case?	Total quantum of impact	Units	Proposed offset	Time horizon (years)	Start area and quality	Future area and quality without offset	Future area and quality with offset	Raw gain	Confidence in result (%)	Adjusted gain	Net present value (adjusted hectares)	% of impact offset	Minimum (90%) direct offset requirement met?	Cost (\$ total)	Information source		
	<i>Ecological Communities</i>																		
	Area of community	Yes	6.85	Adjusted hectares			Risk-related time horizon (max. 20 years)	20	Start area (hectares)	60	Risk of loss (%) without offset	30%	Risk of loss (%) with offset	10%					
							Future area without offset (adjusted hectares)	42.0	Future area with offset (adjusted hectares)	54.0	12.00	90%	10.80	8.51	6.81	99.39%	Yes		
							Time until ecological benefit	0	Start quality (scale of 0-10)	8	Future quality without offset (scale of 0-10)	6	Future quality with offset (scale of 0-10)	8	2.00		0.00	0.00	
	<i>Threatened species habitat</i>																		
	Area of habitat	No					Time over which loss is averted (max. 20 years)		Start area (hectares)		Risk of loss (%) without offset		Risk of loss (%) with offset						
							Future area without offset (adjusted hectares)	0.0	Future area with offset (adjusted hectares)	0.0									
							Time until ecological benefit		Start quality (scale of 0-10)		Future quality without offset (scale of 0-10)		Future quality with offset (scale of 0-10)						
	Protected matter attributes	Attribute relevant to case?	Total quantum of impact	Units	Proposed offset	Time horizon (years)	Start value	Future value without offset	Future value with offset	Raw gain	Confidence in result (%)	Adjusted gain	Net present value	% of impact offset	Minimum (90%) direct offset requirement met?	Cost (\$ total)	Information source		
Number of features e.g. Nest hollows, habitat trees	No																		
Condition of habitat Change in habitat condition, but no change in extent	No																		
<i>Threatened species</i>																			
Birth rate e.g. Change in nest success	No																		
Mortality rate e.g. Change in number of road kills per year	No																		
Number of individuals e.g. Individual plants/animals	No																		

Summary								
Summary	Protected matter attributes	Quantum of impact	Net present value of offset	% of impact offset	Direct offset adequate?	Cost (\$)		
						Direct offset (\$)	Other compensatory measures (\$)	Total (\$)
	Birth rate	0				\$0.00		\$0.00
	Mortality rate	0				\$0.00		\$0.00
	Number of individuals	0				\$0.00		\$0.00
	Number of features	0				\$0.00		\$0.00
	Condition of habitat	0				\$0.00		\$0.00
	Area of habitat	0				\$0.00		\$0.00
Area of community	6.848	6.81	99.39%	Yes	\$0.00	#DIV/0!	#DIV/0!	
					\$0.00	#DIV/0!	#DIV/0!	

# Offsets Assessment Guide

For use in determining offsets under the *Environment Protection and Biodiversity Conservation Act 1999*  
2 October 2012

This guide relies on Macros being enabled in your browser.

Matter of National Environmental Significance	
Name	Carnaby's Black Cockatoo
EPBC Act status	Endangered
Annual probability of extinction Based on IUCN category definitions	1.2%

Key to Cell Colours
User input required
Drop-down list
Calculated output
Not applicable to attribute

Impact calculator						
Protected matter attributes	Attribute relevant to case?	Description	Quantum of impact	Units	Information source	
<i>Ecological communities</i>						
Area of community	No		Area			
			Quality			
			Total quantum of impact	0.00		
<i>Threatened species habitat</i>						
Area of habitat	Yes		Area	15.58	Hectares	
			Quality	4	Scale 0-10	
			Total quantum of impact	6.23	Adjusted hectares	
<i>Threatened species</i>						
Protected matter attributes	Attribute relevant to case?	Description	Quantum of impact	Units	Information source	
Number of features e.g. Nest hollows, habitat trees	No					
Condition of habitat Change in habitat condition, but no change in extent	No					
Birth rate e.g. Change in nest success	No					
Mortality rate e.g. Change in number of road kills per year	No					
Number of individuals e.g. Individual plants/animals	No					

Offset calculator																			
Protected matter attributes	Attribute relevant to case?	Total quantum of impact	Units	Proposed offset	Time horizon (years)	Start area and quality	Future area and quality without offset	Future area and quality with offset	Raw gain	Confidence in result (%)	Adjusted gain	Net present value (adjusted hectares)	% of impact offset	Minimum (90%) direct offset requirement met?	Cost (\$ total)	Information source			
<i>Ecological Communities</i>																			
Area of community	No				Risk-related time horizon (max. 20 years)	Start area (hectares)	Risk of loss (%) without offset	Risk of loss (%) with offset											
					Time until ecological benefit	Start quality (scale of 0-10)	Future area without offset (adjusted hectares)	0.0	Future area with offset (adjusted hectares)	0.0									
							Future quality without offset (scale of 0-10)		Future quality with offset (scale of 0-10)										
<i>Threatened species habitat</i>																			
Area of habitat	Yes	6.23	Adjusted hectares		Time over which loss is averted (max. 20 years)	20	Start area (hectares)	55	Risk of loss (%) without offset	30%	Risk of loss (%) with offset	10%							
					Time until ecological benefit	0	Start quality (scale of 0-10)	8	Future area without offset (adjusted hectares)	38.5	Future area with offset (adjusted hectares)	49.5	11.00	90%	9.90	7.80	6.24	100.11%	Yes
							Future quality without offset (scale of 0-10)	6	Future quality with offset (scale of 0-10)	8	2.00	0.00	0.00						
<i>Threatened species</i>																			
Protected matter attributes	Attribute relevant to case?	Total quantum of impact	Units	Proposed offset	Time horizon (years)	Start value	Future value without offset	Future value with offset	Raw gain	Confidence in result (%)	Adjusted gain	Net present value	% of impact offset	Minimum (90%) direct offset requirement met?	Cost (\$ total)	Information source			
Number of features e.g. Nest hollows, habitat trees	No																		
Condition of habitat Change in habitat condition, but no change in extent	No																		
Birth rate e.g. Change in nest success	No																		
Mortality rate e.g. Change in number of road kills per year	No																		
Number of individuals e.g. Individual plants/animals	No																		

Summary							
Protected matter attributes	Quantum of impact	Net present value of offset	% of impact offset	Direct offset adequate?	Cost (\$)		
					Direct offset (\$)	Other compensatory measures (\$)	Total (\$)
Birth rate	0				\$0.00		\$0.00
Mortality rate	0				\$0.00		\$0.00
Number of individuals	0				\$0.00		\$0.00
Number of features	0				\$0.00		\$0.00
Condition of habitat	0				\$0.00		\$0.00
Area of habitat	6.232	6.24	100.11%	Yes	\$0.00	N/A	\$0.00
Area of community	0				\$0.00		\$0.00
					<b>\$0.00</b>	<b>\$0.00</b>	<b>\$0.00</b>