



APPENDIX K

**ENVIRONMENTAL
NOISE ASSESSMENT –
LOCKYER GAS
DEVELOPMENT
PROJECT (LLOYD
GEORGE ACOUSTICS
2023)**

Environmental Noise Assessment - Lockyer Gas Development Project

Lot 3558/25116 Midlands Road, Mount Horner WA

Doc Number: LGP-0000-EN-REP-000005
LGA Reference: 23078242-01B

Prepared for:
Mineral Resources

Doc Number: LGP-0000-EN-REP-000005

LGA LGA Reference: 23078242-01B

Lloyd George Acoustics Pty Ltd

ABN: 79 125 812 544

PO Box 717

Hillarys WA 6923

www.lgacoustics.com.au

Contacts	General	Daniel Lloyd	Terry George	Matt Moyle
E:	info@lgacoustics.com.au	daniel@lgacoustics.com.au	terry@lgacoustics.com.au	matt@lgacoustics.com.au
P:	9401 7770	0439 032 844	0400 414 197	0412 611 330
Contacts	Rob Connolly	Daryl Thompson	Hao Tran	Matt Nolan
E:	rob@lgacoustics.com.au	daryl@lgacoustics.com.au	hao@lgacoustics.com.au	matt.nolan@lgacoustics.com.au
P:	0410 107 440	0420 364 650	0438 481 207	0448 912 604

This report has been prepared in accordance with the scope of services described in the contract or agreement between Lloyd George Acoustics Pty Ltd and the Client. The report relies upon data, surveys, measurements and results taken at or under the particular times and conditions specified herein. Any findings, conclusions or recommendations only apply to the aforementioned circumstances and no greater reliance should be assumed or drawn by the Client. Furthermore, the report has been prepared solely for use by the Client, and Lloyd George Acoustics Pty Ltd accepts no responsibility for its use by other parties.

Date	Rev	Description	Author	Verified
02/10/23	0	Issued to Client	Daniel Lloyd	Terry George
30/11/23	A	Update to 250 TJ/d Plant	Daniel Lloyd	Terry George
08/12/23	B	Enclosure to compressors and engine	Daniel Lloyd	Terry George

CONTENTS

1. INTRODUCTION.....	1
2. CRITERIA.....	2
2.1. Regulations 7, 8 & 9.....	2
3. METHODOLOGY	4
3.1.1. Meteorological Conditions	4
3.1.2. Topographical Data.....	4
3.1.3. Ground Absorption	4
3.1.4. Source Sound Levels	5
4. RESULTS	6
5. RECOMMENDATIONS & CONCLUSION	9

List of Tables

Table 2-1 Adjustments Where Characteristics Cannot Be Removed	2
Table 2-2 Baseline Assigned Levels	3
Table 3-1: Modelling Meteorological Conditions	4
Table 3-2: Source Sound Power Levels, dB.....	5
Table 4-1: Predicted Noise Levels, dB(A)	6

List of Figures

Figure 1-1: Subject Site Location	1
Figure 4-1: Predicted L_{A10} Noise Levels dB.....	7
Figure 4-2: Predicted L_{A1} Noise Levels dB	8

Appendices

Appendix A – Processing Facility Layout

Appendix B – Terminology.....

1. INTRODUCTION

Lloyd George Acoustics was engaged by Mineral Resources to undertake an environmental noise assessment for a proposed 250 TJ/d gas processing facility to be located at Lot 3558/25116 Midlands Road, Mount Horner WA - refer *Figure 1-1 (source Google Earth)*.

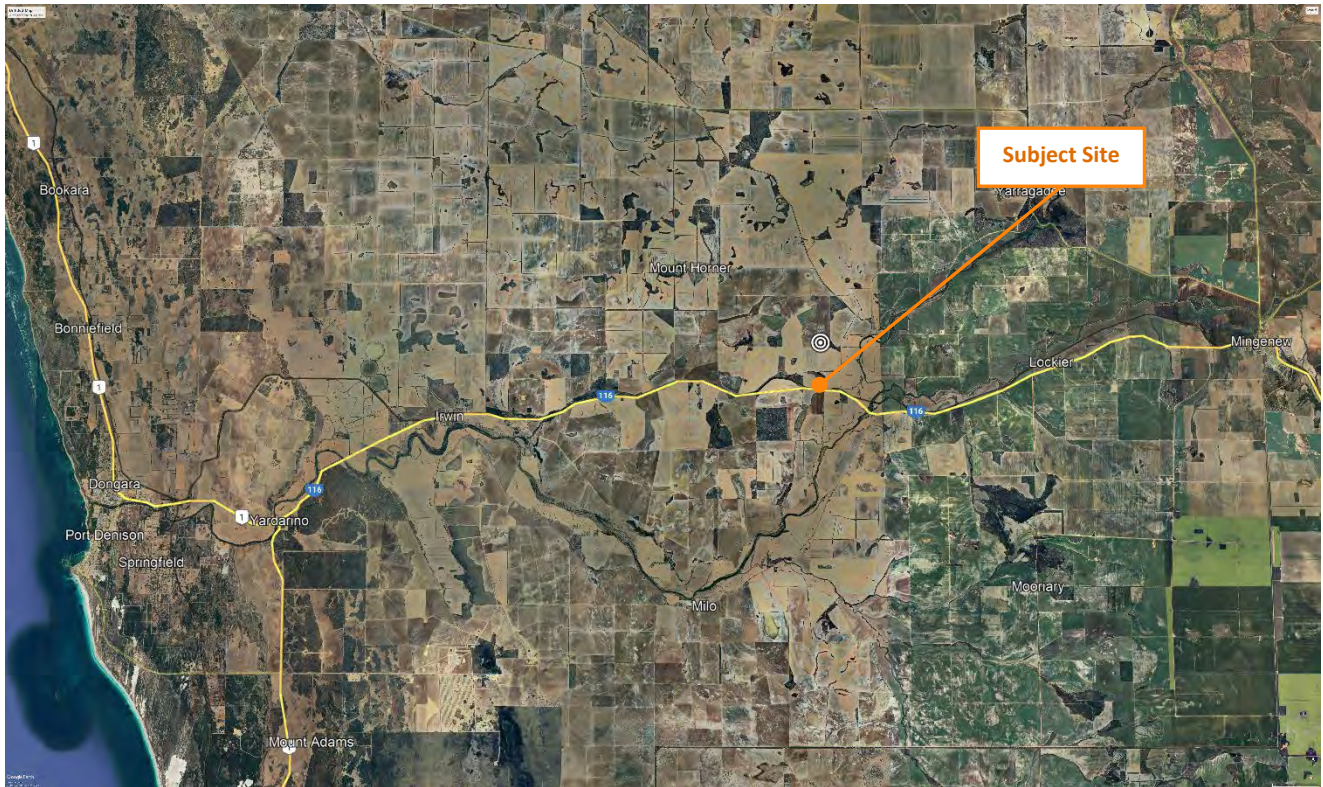


Figure 1-1: Subject Site Location

With regard to noise emissions, consideration is given to noise from the processing plant at neighbouring properties, and compared against the prescribed standards of the *Environmental Protection (Noise) Regulations 1997*.

Appendix B contains a description of some of the terminology used throughout this report.

2. CRITERIA

Environmental noise in Western Australia is governed by the *Environmental Protection Act 1986*, through the *Environmental Protection (Noise) Regulations 1997* (the Regulations).

2.1. Regulations 7, 8 & 9

This group of regulations provide the prescribed standard for noise as follows:

“7. Prescribed standard for noise emissions

- (1) *Noise emitted from any premises or public place when received at other premises –*
- (a) *must not cause, or significantly contribute to, a level of noise which exceeds the assigned level in respect of noise received at premises of that kind; and*
 - (b) *must be free of –*
 - (i) *tonality; and*
 - (ii) *impulsiveness; and*
 - (iii) *modulation,**when assessed under regulation 9.*
- (2) *For the purposes of subregulation (1)(a), a noise emission is taken to significantly contribute to a level of noise if the noise emission ... exceeds a value which is 5 dB below the assigned level at the point of reception.”*

Tonality, impulsiveness and modulation are defined in regulation 9. Under regulation 9(3), “Noise is taken to be free of the characteristics of tonality, impulsiveness and modulation if -

- (a) *the characteristics cannot be reasonably and practicably removed by techniques other than attenuating the overall level of noise emission; and*
- (b) *the noise emission complies with the standard prescribed under regulation 7(1)(a) after the adjustments in the table [Table 2-1] ... are made to the noise emission as measured at the point of reception.”*

Table 2-1 Adjustments Where Characteristics Cannot Be Removed

Where Noise Emission is Not Music*			Where Noise Emission is Music	
Tonality	Modulation	Impulsiveness	No Impulsiveness	Impulsiveness
+ 5 dB	+ 5 dB	+ 10 dB	+ 10 dB	+ 15 dB

* These adjustments are cumulative to a maximum of 15 dB.

The assigned levels (prescribed standards) for all premises are specified in regulation 8(3) and are shown in *Table 2-2*. The L_{A10} assigned level is applicable to noises present for more than 10% of a representative assessment period, generally applicable to “steady-state” noise sources. The L_{A1} is for short-term noise sources present for less than 10% and more than 1% of the time. The L_{Amax} assigned level is applicable for incidental noise sources, present for less than 1% of the time.

Table 2-2 Baseline Assigned Levels

Premises Receiving Noise	Time Of Day	Assigned Level (dB)		
		L _{A10}	L _{A1}	L _{Amax}
Noise sensitive premises: highly sensitive area ¹	0700 to 1900 hours Monday to Saturday (Day)	45 + influencing factor	55 + influencing factor	65 + influencing factor
	0900 to 1900 hours Sunday and public holidays (Sunday)	40 + influencing factor	50 + influencing factor	65 + influencing factor
	1900 to 2200 hours all days (Evening)	40 + influencing factor	50 + influencing factor	55 + influencing factor
	2200 hours on any day to 0700 hours Monday to Saturday and 0900 hours Sunday and public holidays (Night)	35 + influencing factor	45 + influencing factor	55 + influencing factor
Noise sensitive premises: any area other than highly sensitive area	All hours	60	75	80
Commercial Premises	All hours	60	75	80
Industrial and Utility Premises	All hours	65	80	90

1. *highly sensitive area* means that area (if any) of noise sensitive premises comprising —

- (a) a building, or a part of a building, on the premises that is used for a noise sensitive purpose; and
- (b) any other part of the premises within 15 metres of that building or that part of the building.

As all the land surrounding the proposed processing facility is rural and away from any commercial or industrial land uses, the influencing factor (IF), in relation to noise received at noise sensitive premises, has been calculated as 0 dB. Therefore, it is the baseline levels provided in *Table 2-2* that are applicable.

It must be noted the assigned levels above apply outside the receiving premises and at a point at least 3 metres away from any substantial reflecting surfaces.

The assigned levels are statistical levels and therefore the period over which they are determined is important. The Regulations define the Representative Assessment Period (RAP) as “*a period of time of not less than 15 minutes, and not exceeding 4 hours, determined by an inspector or authorised person to be appropriate for the assessment of a noise emission, having regard to the type and nature of the noise emission*”. An inspector or authorised person is a person appointed under Sections 87 & 88 of the *Environmental Protection Act 1986* and include Local Government Environmental Health Officers and Officers from the Department of Water Environmental Regulation. Acoustic consultants or other environmental consultants are not appointed as an inspector or authorised person. Therefore, whilst this assessment is based on a 4-hour RAP, which is assumed to be appropriate given the nature of the operations, this is to be used for guidance only.

3. METHODOLOGY

Computer modelling has been used to predict the noise emissions from the development to all nearby receivers. The software used was *SoundPLAN 9.0* with the CONCAWE algorithms selected, as they include the influence of meteorological conditions. Input data required in the model are listed below and discussed in *Section 3.2.1* to *Section 3.2.4*:

- Meteorological Information;
- Topographical data;
- Ground Absorption; and
- Source sound power levels.

3.1.1. Meteorological Conditions

Meteorological information utilised is provided in *Table 3-1* and is considered to represent worst-case conditions for noise propagation, which would occur during the night period. At wind speeds greater than those shown, sound propagation may be further enhanced, however background noise from the wind itself and from local vegetation is likely to be elevated and dominate the ambient noise levels.

Table 3-1: Modelling Meteorological Conditions

Parameter	Night (7.00pm to 7.00am) ²
Temperature (°C)	15
Humidity (%)	50
Wind Speed (m/s)	3
Wind Direction ¹	All
Pasquil Stability Factor	F

Notes:

1. The modelling package allows for all wind directions to be modelled simultaneously.
2. The conditions above are as defined in *Guideline: Assessment of Environmental Noise Emissions*; May 2021

3.1.2. Topographical Data

Topographical data was adapted from publicly available information (e.g. *Google*) in the form of spot heights and combined with the site plan.

3.1.3. Ground Absorption

The ground absorption has been assumed to be 0.0 (0%) for the processing area and 0.75 (75%) elsewhere, noting that 0.0 represents hard reflective surfaces such as water and 1.0 represents absorptive surfaces such as grass. Using a value of 75% allows for times after harvesting, where the ground may not be covered with crops (i.e. soft ground).

3.1.4. Source Sound Levels

The source sound power levels of the processing plant assumed in the modelling are provided in *Table 3-2*. The processing plant layout is provided in *Appendix A*.

Table 3-2: Source Sound Power Levels, dB

Description	Octave Band Centre Frequency (Hz)								Overall dB(A)
	63	125	250	500	1k	2k	4k	8k	
Amine Pumps	75	83	87	96	102	99	91	82	105
Compressor > 1750 KW (enclosed)	57	68	77	80	88	89	84	76	93
Condensation Cooler	89	97	96	97	95	93	88	71	103
Cooler Bed	84	92	91	92	90	88	83	66	98
Electric Pump	58	73	83	86	83	86	86	71	92
Inlet Cooler Fan	59	67	66	67	65	63	58	41	73
Inlet Separator				95					95
Methane Gas Flare Discharge	103	97	111	114	110	114	115		120
Methane Gas Flare Normal	76	70	84	87	83	87	88		93
Reciprocating Engines (enclosed)	64	71	78	83	90	89	79	71	93
Reflux Pumps	63	71	75	84	90	87	79	70	93
Slug Catcher				92					92
Engine Exhaust	72	76	73	76	80	80	71	58	85
Dew Point Controllers (JT Jet)				95					95
Launchers/Receivers				92					92
Workshop	46	61	73	89	92	93	88	76	97

The following is noted in relation to *Table 3-2*:

- Sound power levels provided by Mineral Resources;
- Modelling assumes all plant is operating simultaneously;
- The noise data for all sources representative of its L₁₀ level (except methane gas discharge);
- The methane gas discharge is representative of the L₁ level; and
- The assumed enclosures for the compressors and engine is to ensure compliance with occupational health and safety standards of 85 dB(A) at 1 metres. This assessment does not assume any specific design or use of the enclosures.

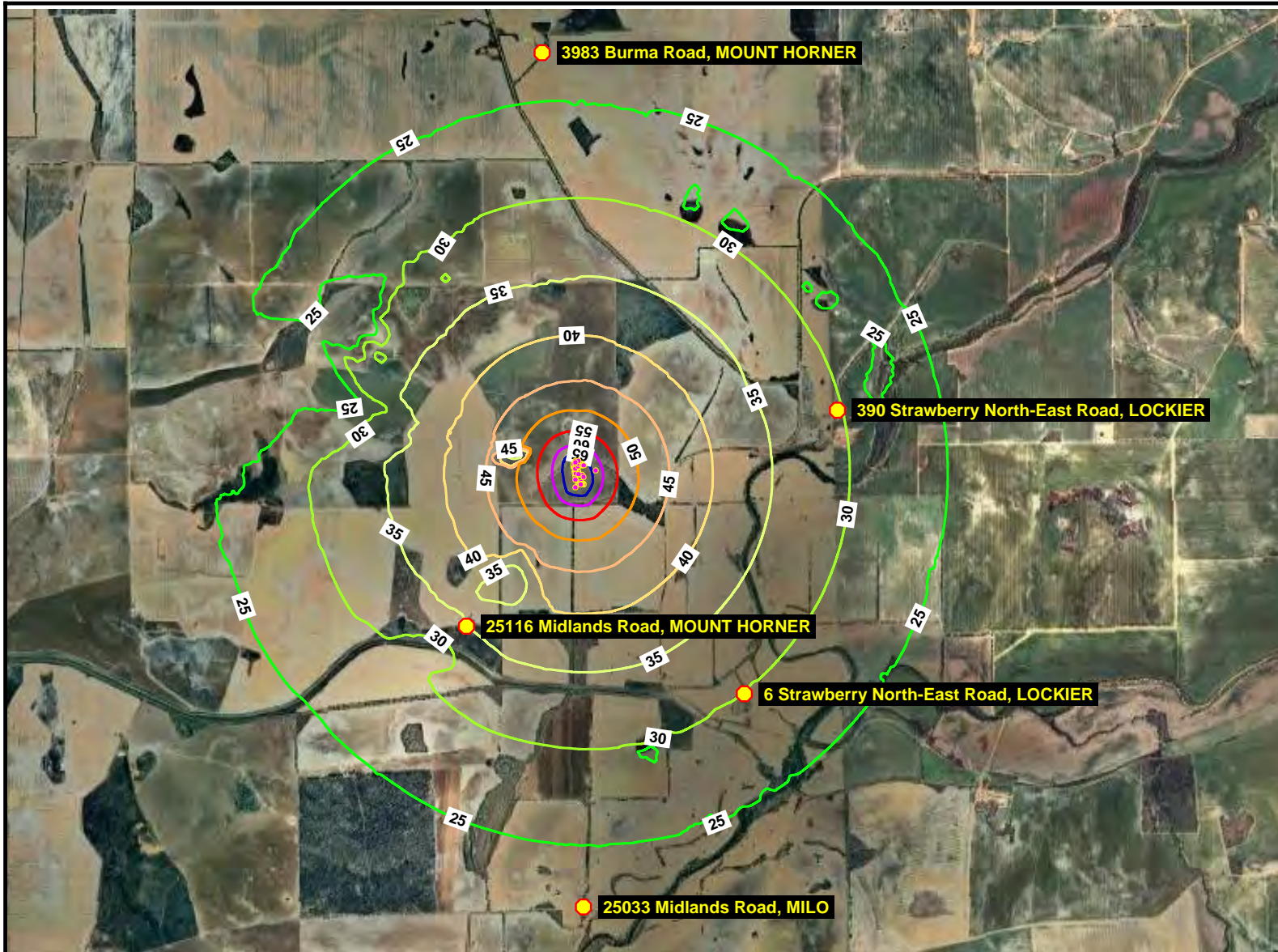
4. RESULTS

The noise levels were predicted for two scenarios, being the L_{A10} levels representative of normal operations and the L_{A1} level, being during a gas flare discharge. The results are presented in *Table 4-1* and *Figures 4-1 and 4-2* respectively.



Table 4-1: Predicted Noise Levels, dB(A)

Receiver	Predicted L_{A10} Noise Level dB	Controlling L_{A10} Criterion	Predicted L_{A1} Noise Level dB	Controlling L_{A1} Criterion	Comment
6 Strawberry North-East Road	30	35	34	45	Compliant with assigned levels at all times
390 Strawberry North-East Road, Lockier	30	35	35	45	Compliant with assigned levels at all times
3983 Burma Road, Mount Horner	23	35	27	45	Compliant with assigned levels at all times
25033 Midlands Road, Milo	22	35	27	45	Compliant with assigned levels at all times
25116 Midlands Road, Mount Horner	35	-	39	-	Premises on same property so Regulations do not apply

Figure 4-1

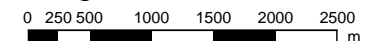


Signs and symbols

-  Sensitive Receiver
-  Noise Source



Length Scale



Lockyer Gas Processing Facility
Predicted L_{A10} Noise Levels from Processing Plant
Wind from All Directions

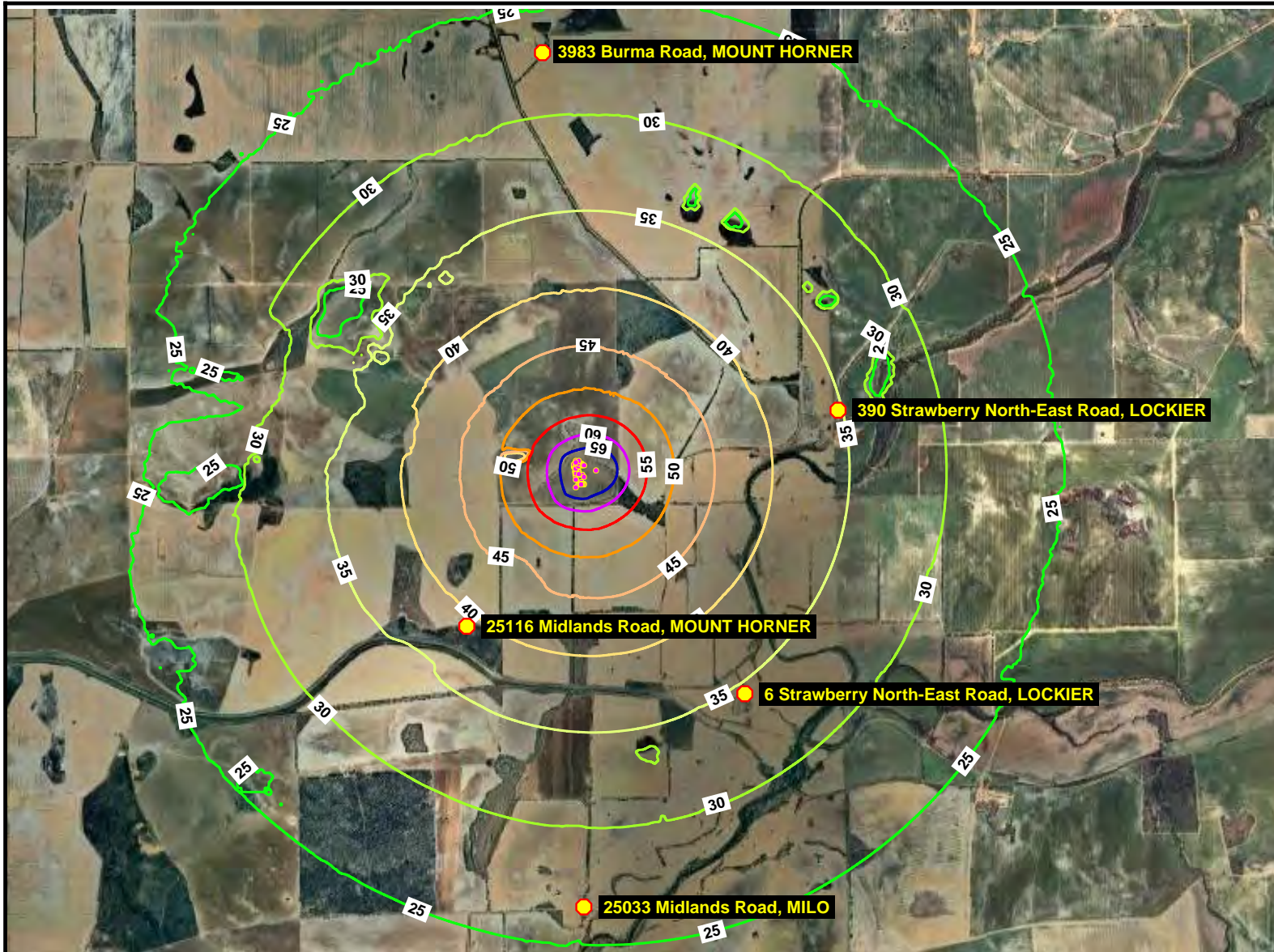
SoundPlan v8.2
CONCAWE Algorithms

8 December 2023





Lloyd George Acoustics
PO Box 717
HILLARYS WA 6923
(08) 9401 7770

Figure 4-2

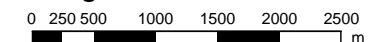


Signs and symbols

-  Sensitive Receiver
-  Noise Source



Length Scale



Lockyer Gas Processing Facility
Predicted L_{A1} Noise Levels from Processing Plant
Wind from All Directions

SoundPlan v8.2
CONCAWE Algorithms

8 December 2023

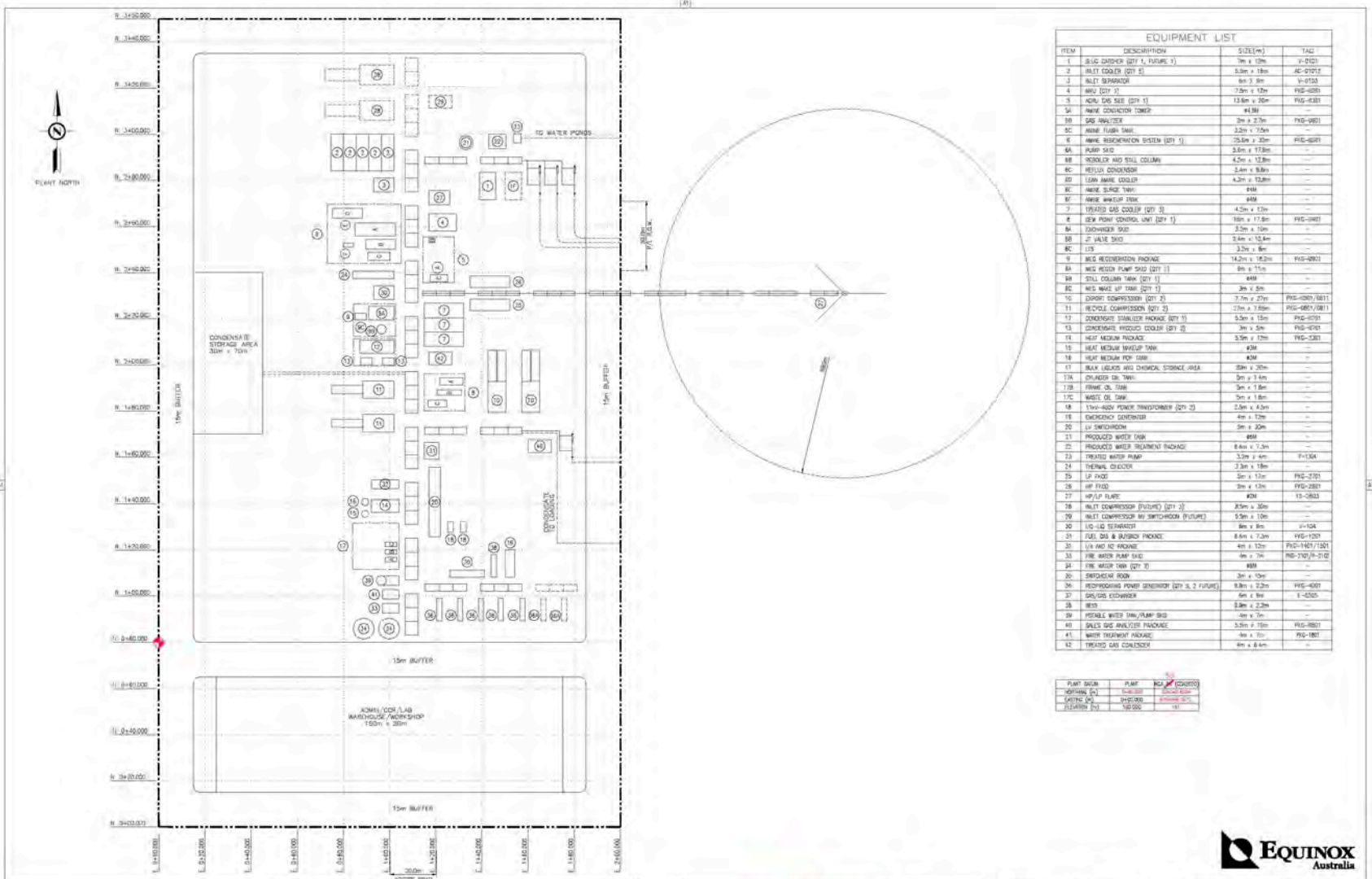


Lloyd George Acoustics
PO Box 717
HILLARYS WA 6923
(08) 9401 7770

5. RECOMMENDATIONS & CONCLUSION

The predicted noise levels presented in *Section 4*, shows that the noise levels from the Lockyer Gas Development Project can comply with the assigned levels prescribed within the *Environmental Protection (Noise) Regulations 1997*, at all adjacent noise sensitive premises.

Appendix A – Processing Facility Layout



ITEM	DESCRIPTION	SIZE(M)	TAG
1	SLUG CHOKER (QTY 1)	7m x 0.9m	Y-0101
2	BUILT COOLER (QTY 1)	3.5m x 1.8m	AC-0101
3	BUILT SEPARATOR	6m x 3.8m	Y-0103
4	MRU (QTY 2)	7.5m x 1.2m	FG-0201
5	ADM/CCS LAB (QTY 1)	15.0m x 3.0m	FG-0301
54	WAKE CONDENSER TOWER	4.8M	---
10	GAS ANALYZER	3m x 2.7m	FG-0601
6C	WAKE FLUSH TANK	3.2m x 7.0m	---
6	WAKE REGENERATION SYSTEM (QTY 1)	25.0m x 2.0m	FG-0201
6A	PUMP SKID	3.0m x 1.5m	---
18	RECOILER AND ROLL COLUMN	4.2m x 1.2m	---
8C	REFILL CONDENSER	2.4m x 8.8m	---
10	LEAN WAKE USULER	4.2m x 7.0m	---
8C	WAKE SUMP TANK	4M	---
17	WAKE SWEEP TANK	4M	---
7	TREATED GAS COOLER (QTY 2)	4.2m x 1.2m	---
8	SEV POINT CONTROL UNIT (QTY 1)	1.8m x 1.78m	FG-0401
8A	DOWNHOLE SKID	2.0m x 1.5m	---
18	LP WAKE SKID	3.0m x 1.5m	---
8C	ITS	3.2m x 8m	---
9	WGS REGENERATION PACKAGE	14.2m x 16.2m	FG-0901
8A	WGS REGEN PUMP SKID (QTY 1)	8m x 1.5m	---
8B	ROLL COLUMN TANK (QTY 1)	4M	---
8C	WGS WAKE UP TANK (QTY 1)	3m x 2.5m	---
10	DIPOUT COMPRESSOR (QTY 2)	7.7m x 2.7m	FG-0801/0811
11	RECYCLE COMPRESSOR (QTY 2)	7.7m x 2.8m	FG-0801/0811
17	DOWNHOLE STABILIZER PACKAGE (QTY 1)	3.5m x 1.5m	FG-0501
13	CONDENSATE RECYCLE COOLER (QTY 2)	3m x 3.5m	FG-0501
14	HEAT MEDIUM PACKAGE	3.5m x 1.7m	FG-0301
15	HEAT MEDIUM SWEEP TANK	4M	---
16	HEAT MEDIUM PIP. UPR.	4M	---
17	BULK BLENDING CHEMICAL STORAGE AREA	5m x 2.0m	---
17A	CHANGED OIL TANK	2m x 1.7m	---
17B	FRAME OIL TANK	2m x 1.8m	---
17C	WASTE OIL TANK	2m x 1.8m	---
18	11KV/400V POWER TRANSFORMER (QTY 2)	2.5m x 4.0m	---
19	EMERGENCY GENERATOR	4m x 1.5m	---
20	LV SWITCHROOM	2m x 2.0m	---
21	PRODUCED WATER TANK	4M	---
22	PRODUCED WATER TREATMENT PACKAGE	4.4m x 1.3m	---
23	TREATED WATER PUMP	3.5m x 4m	T-1304
24	THERMAL CHOKER	3.3m x 1.8m	---
25	LP FWD	2m x 1.2m	FG-0101
26	HP FWD	2m x 1.2m	FG-0201
27	HP/LP FLARE	4M	Y-0203
28	BUILT COMPRESSOR (FUTURE) (QTY 2)	4.5m x 3.0m	---
29	BUILT COMPRESSOR BY SMITHSON (FUTURE)	5.5m x 1.0m	---
30	LD-102 SEPARATOR	8m x 8m	Y-104
31	FLUE GAS & AIRFLOW PACKAGE	4.8m x 7.2m	FG-1201
32	LV/AC IN PACKAGE	4m x 1.2m	FG-1401/1401
33	FIRE WATER PUMP SKID	4m x 7m	FG-2101/2102
34	FIRE WATER TANK (QTY 2)	4M	---
36	SMOKER ROOM	2m x 1m	---
36	PROHIBITION POWER GENERATOR (QTY 2 FUTURE)	0.8m x 2.2m	FG-0301
37	GAS/CS EXHAUSTER	6m x 8m	Y-0205
38	WTS	0.8m x 2.2m	---
39	PORTABLE WATER TANK/PUMP SKID	4m x 2m	---
40	SULFUR DIOXIDE ANALYZER PACKAGE	3.5m x 1.7m	FG-0801
41	WATER TREATMENT PACKAGE	4m x 7m	FG-1801
42	TREATED GAS CONDENSER	6m x 8.4m	---

PLANT SCALE	PUMP	SCALE	SCALE
AS SHOWN	AS SHOWN	AS SHOWN	AS SHOWN
DATE	DATE	DATE	DATE

NO.	DESCRIPTION	DATE	BY	CHK
C	REV. SHEET FOR APPROVAL. ISSUED PROJECT WBS-01-01	13/07/2018	FW	
B	REV. SHEET FOR APPROVAL. ISSUED PROJECT WBS-01-01	14/09/2018	FW	B1
A	ISSUED FOR APPROVAL. ISSUED PROJECT WBS-01-01	06/09/2017	FW	
REV.	DESCRIPTION	DATE	BY	CHK



30 WALTERS DRIVE, COCKAYN PANG, TELEPHONE (08) 9326 3600
 WESTERN AUSTRALIA, 6257 WEB www.mr.com.au

SCALE	DATE	BY	CHK	DATE	BY	CHK
AS SHOWN	13/07/2018	FW				
DATE	DATE	DATE	DATE	DATE	DATE	DATE



Appendix B – Terminology

The following is an explanation of the terminology used throughout this report:

- **Decibel (dB)**

The decibel is the unit that describes the sound pressure levels of a noise source. It is a logarithmic scale referenced to the threshold of hearing.

- **A-Weighting**

An A-weighted noise level has been filtered in such a way as to represent the way in which the human ear perceives sound. This weighting reflects the fact that the human ear is not as sensitive to lower frequencies as it is to higher frequencies. An A-weighted sound level is described as L_A , dB.

- **Sound Power Level (L_w)**

Under normal conditions, a given sound source will radiate the same amount of energy, irrespective of its surroundings, being the sound power level. This is similar to a 1kW electric heater always radiating 1kW of heat. The sound power level of a noise source cannot be directly measured using a sound level meter but is calculated based on measured sound pressure level at known distances. Noise modelling incorporates source sound power levels as part of the input data.

- **Sound Pressure Level (L_p)**

The sound pressure level of a noise source is dependent upon its surroundings, being influenced by distance, ground absorption, topography, meteorological conditions etc. and is what the human ear actually hears. Using the electric heater analogy above, the heat will vary depending upon where the heater is located, just as the sound pressure level will vary depending on the surroundings. Noise modelling predicts the sound pressure level from the sound power levels taking into account ground absorption, barrier effects, distance etc.

- **L_{ASlow}**

This is the noise level in decibels, obtained using the A-frequency weighting and the S (slow) time weighting. Unless assessing modulation, all measurements use the slow time weighting characteristic.

- **L_{AFast}**

This is the noise level in decibels, obtained using the A-frequency weighting and the F (fast) time weighting. This is used when assessing the presence of modulation.

- **L_{APeak}**

This is the greatest absolute instantaneous sound pressure level in decibels using the A-frequency weighting.

- **L_{Amax}**

An L_{Amax} level is the maximum A-weighted noise level during a particular measurement.

- **L_{A1}**

The L_{A1} level is the A-weighted noise level exceeded for 1 percent of the measurement period and is considered to represent the average of the maximum noise levels measured.

- **L_{A10}**

The L_{A10} level is the A-weighted noise level exceeded for 10 percent of the measurement period and is considered to represent the “intrusive” noise level.

- **L_{A90}**

The L_{A90} level is the A-weighted noise level exceeded for 90 percent of the measurement period and is considered to represent the “background” noise level.

- **L_{Aeq}**

The equivalent steady state A-weighted sound level (“equal energy”) in decibels which, in a specified time period, contains the same acoustic energy as the time-varying level during the same period. It is considered to represent the “average” noise level.

- **One-Third-Octave Band**

Means a band of frequencies spanning one-third of an octave and having a centre frequency between 25 Hz and 20000 Hz inclusive.

- **Representative Assessment Period**

Means a period of time not less than 15 minutes, and not exceeding four hours, determined by an inspector or authorised person to be appropriate for the assessment of a noise emission, having regard to the type and nature of the noise emission.

- **L_{Amax} assigned level**

Means an assigned level, which, measured as a L_{ASlow} value, is not to be exceeded at any time.

- **L_{A1} assigned level**

Means an assigned level, which, measured as a L_{ASlow} value, is not to be exceeded for more than 1 percent of the representative assessment period.

- **L_{A10} assigned level**

Means an assigned level, which, measured as a L_{ASlow} value, is not to be exceeded for more than 10 percent of the representative assessment period.

- **Tonal Noise**

A tonal noise source can be described as a source that has a distinctive noise emission in one or more frequencies. An example would be whining or droning. The quantitative definition of tonality is:

- the presence in the noise emission of tonal characteristics where the difference between -
 - (a) the A-weighted sound pressure level in any one-third octave band; and
 - (b) the arithmetic average of the A-weighted sound pressure levels in the 2 adjacent one-third octave bands,

is greater than 3 dB when the sound pressure levels are determined as $L_{Aeq,T}$ levels where the time period T is greater than 10% of the representative assessment period, or greater than 8 dB at any time when the sound pressure levels are determined as $L_{A\ Slow}$ levels.

This is relatively common in most noise sources.

- **Modulating Noise**

A modulating source is regular, cyclic and audible and is present for at least 10% of the measurement period. The quantitative definition of modulation is:

- a variation in the emission of noise that —
 - (a) is more than 3 dB $L_{A\ Fast}$ or is more than 3 dB $L_{A\ Fast}$ in any one-third octave band; and
 - (b) is present for at least 10% of the representative assessment period; and
 - (c) is regular, cyclic and audible.

- **Impulsive Noise**

An impulsive noise source has a short-term banging, clunking or explosive sound. The quantitative definition of impulsiveness means:

- a variation in the emission of a noise where the difference between L_{Apeak} and L_{Amax} is more than 15 dB when determined for a single representative event.

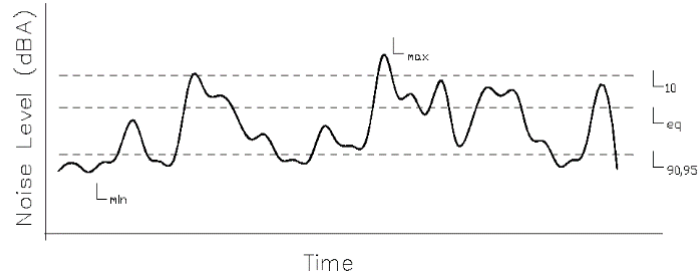
- **Major Road**

Is a road with an estimated average daily traffic count of more than 15,000 vehicles.

- **Secondary / Minor Road**

Is a road with an estimated average daily traffic count of between 6,000 and 15,000 vehicles.

- **Chart of Noise Level Descriptors**



- **Austrroads Vehicle Class**

VEHICLE CLASSIFICATION SYSTEM	
AUSTRROADS	
CLASS 1: LIGHT VEHICLES	
1	BIKE, CAR, VAN, MOTOR, TRUCK, OFF-HIGHWAY MOTOR, MOTORCYCLE
CLASS 2: HEAVY VEHICLES	
2	BIKE, TRUCK, TRUCK, TRUCK, TRUCK, TRUCK, TRUCK
CLASS 3: HEAVY VEHICLES	
3	TRUCK, TRUCK, TRUCK, TRUCK, TRUCK, TRUCK
4	TRUCK, TRUCK, TRUCK, TRUCK, TRUCK, TRUCK
5	TRUCK, TRUCK, TRUCK, TRUCK, TRUCK, TRUCK
6	TRUCK, TRUCK, TRUCK, TRUCK, TRUCK, TRUCK
7	TRUCK, TRUCK, TRUCK, TRUCK, TRUCK, TRUCK
8	TRUCK, TRUCK, TRUCK, TRUCK, TRUCK, TRUCK
9	TRUCK, TRUCK, TRUCK, TRUCK, TRUCK, TRUCK
CLASS 10: HEAVY VEHICLES AND ROAD TRAINS	
10	TRUCK, TRUCK, TRUCK, TRUCK, TRUCK, TRUCK
11	TRUCK, TRUCK, TRUCK, TRUCK, TRUCK, TRUCK
12	TRUCK, TRUCK, TRUCK, TRUCK, TRUCK, TRUCK

- **Typical Noise Levels**

