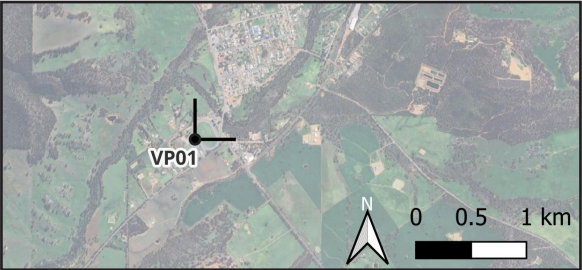


Figure 13: Viewpoint 1: North-easterly view from Williams Sports Pavilion, Williams

Notes:
Location: 33°1'53.796" S 116°52'34.836" E
View direction: Northeast
Distance to nearest turbine: ≈ 10.1 km
Elevation: 279.5 m

Photo taken at: 3:55 PM on the 27th of October 2023
Camera: Canon EOS 6D Mark II
Lens: Sigma 50mm f/1.4 DG JSM lens



Location reference map



Figure 14: Viewpoint 2: North-easterly view from Brooking Street, Williams

Notes:
Location: 33°1'33.912" S 116°52'53.256" E
View direction: Northeast
Distance to nearest turbine: ≈ 9.4 km
Elevation: 276.4 m

Photo taken at: 2:00 PM on the 26th of October 2023
Camera: Canon EOS 6D Mark II
Lens: Sigma 24mm f/1.4 DG JSM lens



Figure 15: Viewpoint 3: Northerly view from Munthoola Street, Williams

Notes:
Location: 33°1'14.028" S 116°53'8.76" E
View direction: North
Distance to nearest turbine: ≈ 8.8 km
Elevation: 288.5 m

Photo taken at: 2:13 PM on the 26th of October 2023
Camera: Canon EOS 6D Mark II
Lens: Sigma 24mm f/1.4 DG JSM lens



Location reference map



Figure 16: Viewpoint 4: North-easterly view from the Albany Highway, Williams

Notes:
Location: 33°0'42.702" S 116°52'2.76" E
View direction: Northeast
Distance to nearest turbine: ≈ 1.7 km
Elevation: 284.2 m

Photo taken at: 1:05 PM on the 26th of October 2023
Camera: Canon EOS 6D Mark II
Lens: Sigma 24mm f/1.4 DG JSM lens



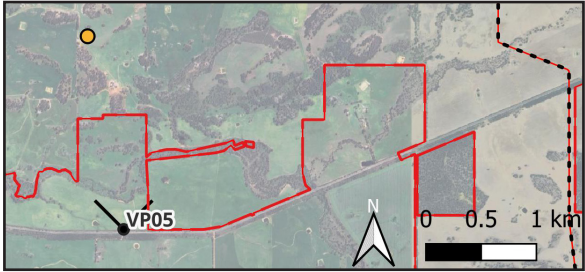
Location reference map



Figure 17: Viewpoint 5: Northerly view from Williams-Kondinin Road, Williams

Notes:
Location: 33°0'34.134" S 116°58'42.636" E
View direction: North
Distance to nearest turbine: ≈ 1.7 km
Elevation: 302.7 m

Photo taken at: 3:17 PM on the 26th of October 2023
Camera: Canon EOS 6D Mark II
Lens: Sigma 24mm f/1.4 DG JSM lens



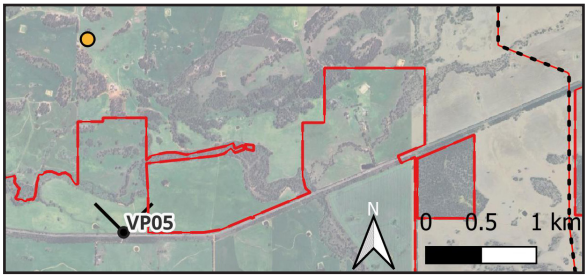
Location reference map



Figure 18: Viewpoint 5: Northerly view from Williams-Kondinin Road, Williams - 75° HFoV

Notes:
Location: 33°0'34.134" S 116°58'42.636" E
View direction: North
Distance to nearest turbine: ≈ 1.7 km
Elevation: 302.7 m

Photo taken at: 3:17 PM on the 26th of October 2023
Camera: Canon EOS 6D Mark II
Lens: Sigma 24mm f/1.4 DG JSM lens



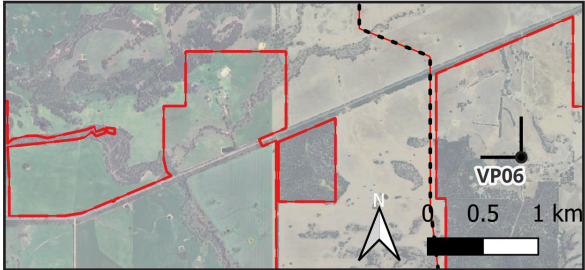
Location reference map



Figure 19: Viewpoint 6: North-westerly view from Geeralying Road, Dumberning

Notes:
Location: 33°0'17.01" S 117°1'49.848" E
View direction: Northwest
Distance to nearest turbine: ≈ 2.1 km
Elevation: 346.0 m

Photo taken at: 3:05 PM on the 26th of October 2023
Camera: Canon EOS 6D Mark II
Lens: Sigma 24mm f/1.4 DG JSM lens



Location reference map

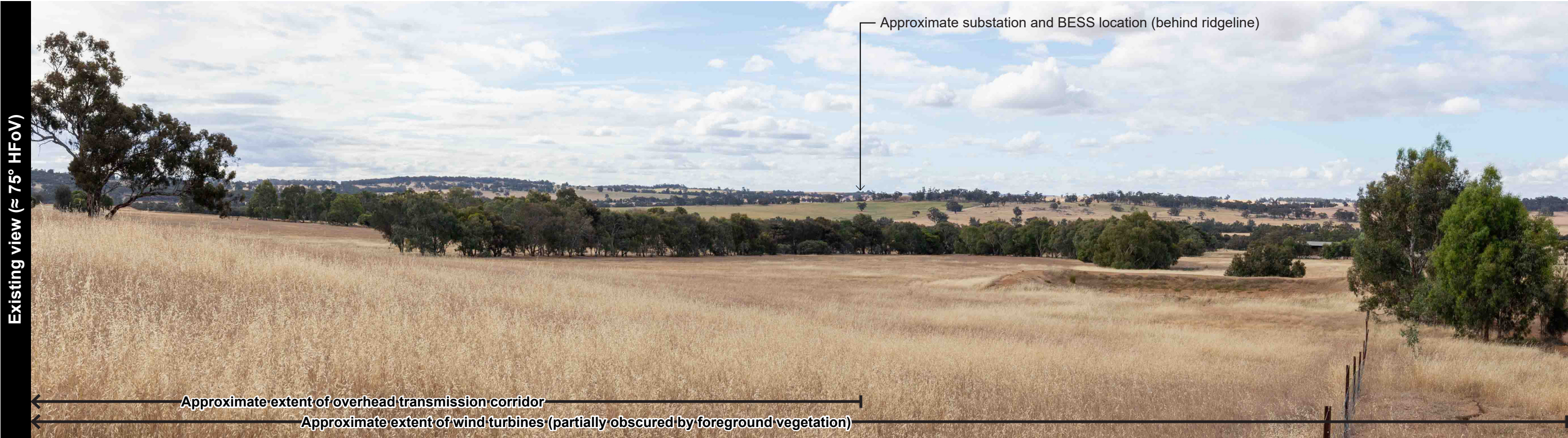
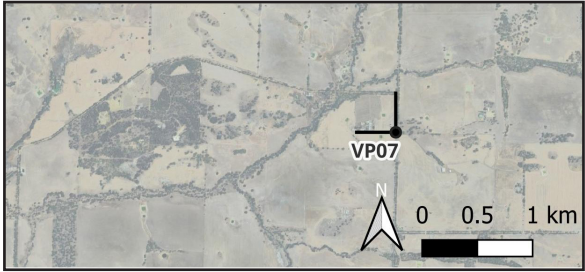


Figure 20: Viewpoint 7: North-westerly view from Tarwonga Road near Downterry Wines, Dumberning

Notes:

Location: 33°0'50.418" S 117°6'34.32" E
View direction: Northwest
Distance to nearest turbine: ≈ 7.9 km
Elevation: 344.3 m

Photo taken at: 5:57 PM on the 26th of October 2023
Camera: Canon EOS 6D Mark II
Lens: Sigma 50mm f/1.4 DG JSM lens



Location reference map

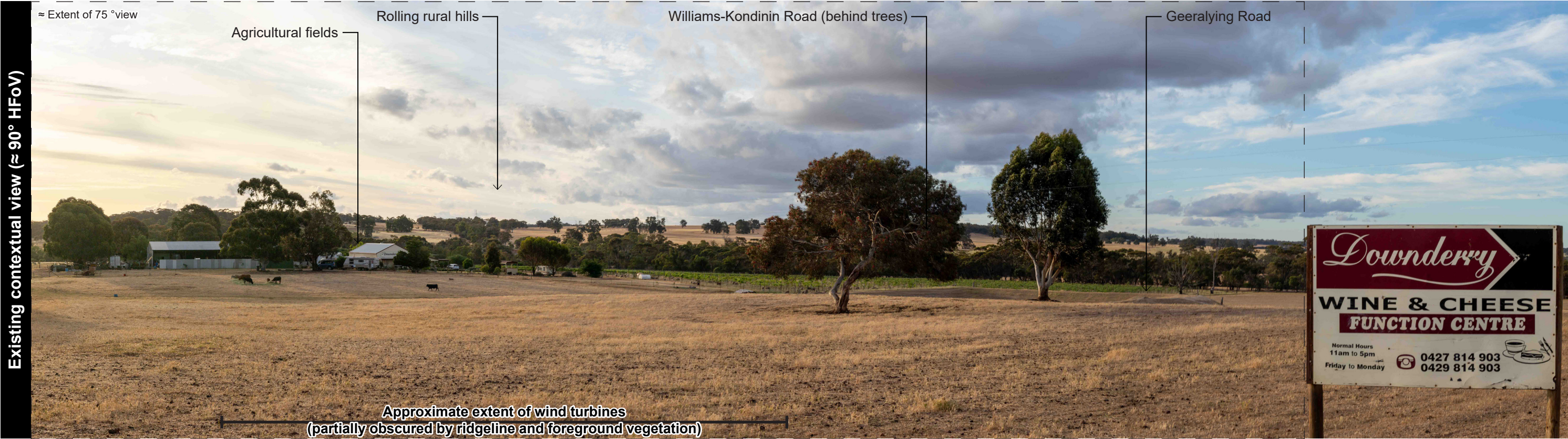


Figure 21: Viewpoint 8: Westerly view from Williams-Kondinin Road, Minigin

Notes:
Location: 32°58'28.404" S 117°4'50.46" E
View direction: West
Distance to nearest turbine: ≈ 4.3 km
Elevation: 372.7 m

Photo taken at: 08:29 AM on the 27th of October 2023
Camera: Canon EOS 6D Mark II
Lens: Sigma 50mm f/1.4 DG JSM lens



Location reference map



Figure 22: Viewpoint 9: Westerly view from Lions Lookout, Narrogin

Notes:

Location: 32°55'58.128" S 117°11'31.35" E
View direction: West
Distance to nearest turbine: ≈ 15.3 km
Elevation: 403.1 m

Photo taken at: 12:10 PM on the 27th of October 2023
Camera: Canon EOS 6D Mark II
Lens: Sigma 24mm f/1.4 DG JSM lens



Location reference map



Figure 23: Viewpoint 10: Westerly view from Wiese Road, Narrogin

Notes:
Location: 32°56'13.218" S 117°8'53.844" E
View direction: West
Distance to nearest turbine: ≈ 11.3 km
Elevation: 372.5 m

Photo taken at: 07:32 AM on the 27th of October 2023
Camera: Canon EOS 6D Mark II
Lens: Sigma 50mm f/1.4 DG JSM lens



Figure 24: Viewpoint 10: Westerly view from Wiese Road, Narrogin - 75° HFoV

Notes:
Location: 32°56'13.218" S 117°8'53.844" E
View direction: West
Distance to nearest turbine: ≈ 11.3 km
Elevation: 372.5 m

Photo taken at: 07:32 AM on the 27th of October 2023
Camera: Canon EOS 6D Mark II
Lens: Sigma 50mm f/1.4 DG JSM lens



Location reference map



Approximate extent of visible turbines



Figure 25: Viewpoint 11: Westerly view from the top of Yilliminning Rock, Boundain

Notes:
Location: 32°56'38.46" S 117°22'22.968" E
View direction: West
Distance to nearest turbine: ≈ 31.8 km
Elevation: 381.5 m

Photo taken at: 1:08 PM on the 27th of October 2023
Camera: Canon EOS 6D Mark II
Lens: Sigma 50mm f/1.4 DG JSM lens

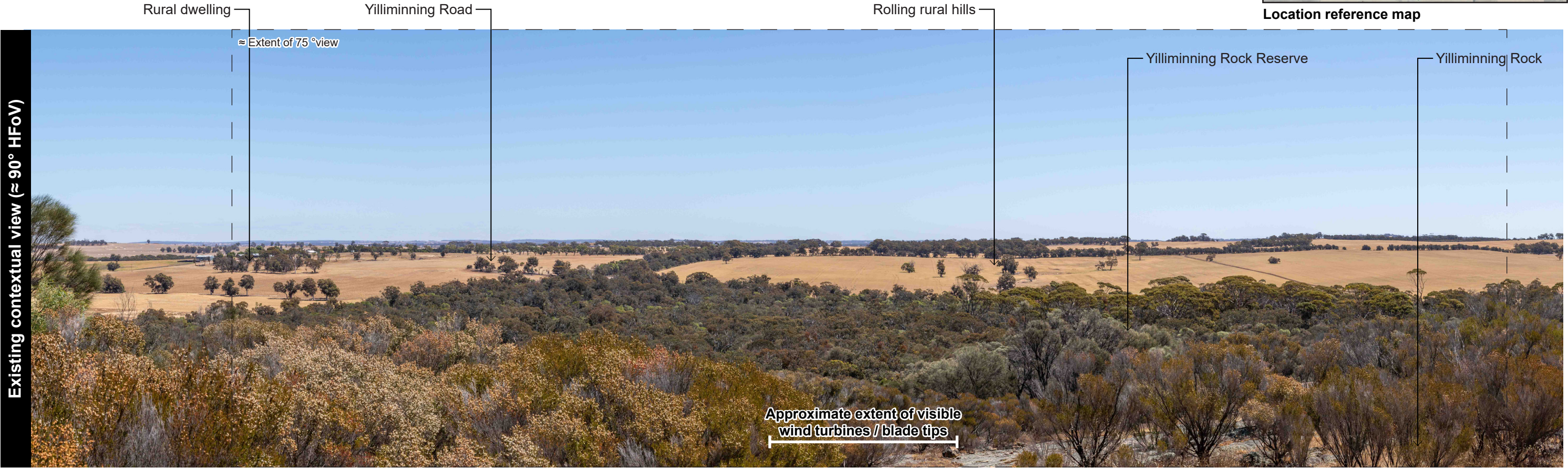
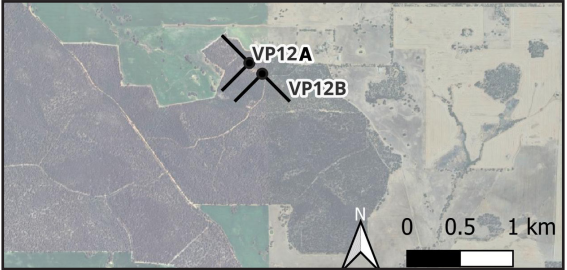


Figure 26: Viewpoint 12a: Westerly view from Contine Hill Lookout in Lol Gray State Forest, Minigin

Notes:
Location: 32°52'56.004" S 117°0'13.788" E
View direction: West
Distance to nearest turbine: ≈ 6.0 km (behind viewer)
Elevation: 429.1 m

Photo taken at: 11:31 PM on the 26th of October 2023
Camera: Canon EOS 6D Mark II
Lens: Sigma 24mm f/1.4 DG JSM lens



No visible turbines (wind turbines located behind viewer)

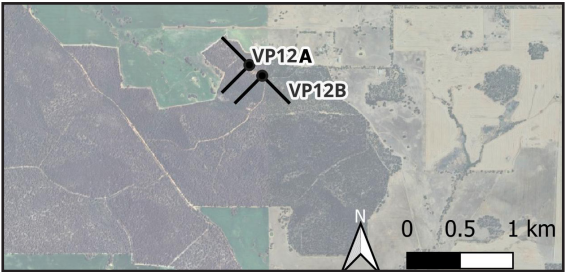


Figure 27: Viewpoint 12b: Southerly view from the Fire Tower Walk in Lol Gray State Forest, Minigin

Notes:

Location: 32°52'59.268" S 117°0'18.594" E
View direction: South
Distance to nearest turbine: ≈ 5.7 km
Elevation: 436.1 m

Photo taken at: 12:05 PM on the 26th of October 2023
Camera: Canon EOS 6D Mark II
Lens: Sigma 24mm f/1.4 DG JSM lens



Location reference map



Figure 28: Viewpoint 13: Southerly view from the Ochre Trail in Dryandra Woodland National Park, Williams

Notes:

Location: 32°47'50.232" S 116°56'33.828" E

View direction: South

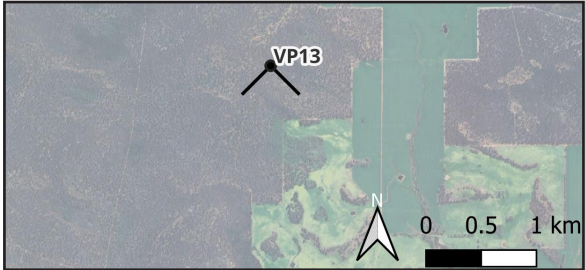
Distance to nearest turbine: ≈ 16.3 km

Elevation: 377.6 m

Photo taken at: 11:04 AM on the 28th of October 2023

Camera: Canon EOS 6D Mark II

Lens: Sigma 50mm f/1.4 DG JSM lens



Location reference map



Contine Hill

Dryandra Woodlands National Park

Approximate extent of wind turbines
(glimpsed view through vegetation)



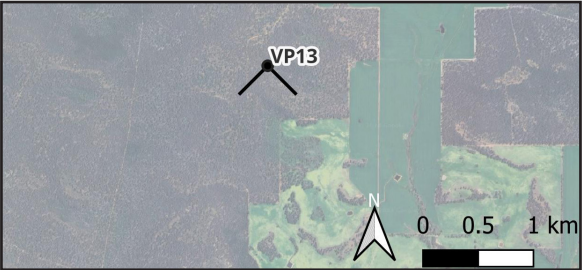
Inset Plan showing turbines evident through trees

Refer Inset Plan

Figure 29: Viewpoint 13: Southerly view from the Ochre Trail in Dryandra Woodland National Park, Williams - wireframe visualisation

Notes:
Location: 32°47'50.232" S 116°56'33.828" E
View direction: South
Distance to nearest turbine: ≈ 16.3 km
Elevation: 377.6 m

Photo taken at: 11:04 AM on the 28th of October 2023
Camera: Canon EOS 6D Mark II
Lens: Sigma 50mm f/1.4 DG JSM lens



Location reference map



Approximate extent of wind turbines
(shown in red behind vegetation)

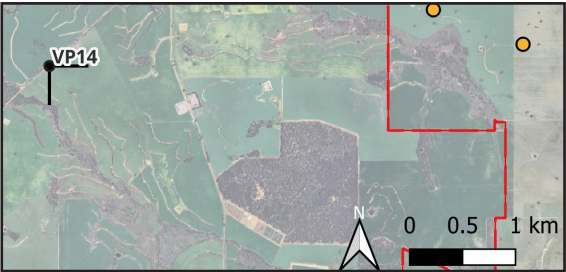


Note: Wireframe visualisation shows proposed turbines highlighted in red, as wind turbines are obscured from the view by foreground vegetation in this location. Some turbines would also be further obscured by intervening topography.

Figure 30: Viewpoint 14: South-easterly view from Clayton Road, Williams

Notes:
Location: 32°56'30.804" S 116°57'32.16" E
View direction: Southeast
Distance to nearest turbine: ≈ 3.6 km
Elevation: 314.2 m

Photo taken at: 10:39 AM on the 26th of October 2023
Camera: Canon EOS 6D Mark II
Lens: Sigma 24mm f/1.4 DG JSM lens



Location reference map



Existing contextual view (≈ 125° HFoV)

Approximate extent of wind turbines (partially obscured by foreground topography and vegetation)



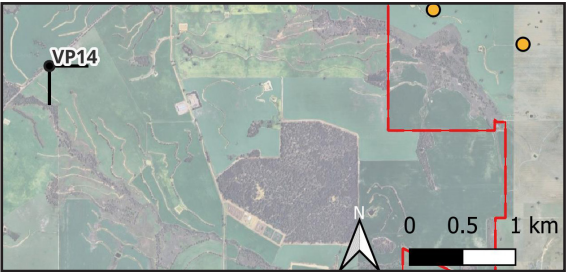
Visualisation (≈ 125° HFoV)

Figure 31: Viewpoint 14: South-easterly view from Clayton Road, Williams - 75° HFoV

Notes:

Location: 32°56'30.804" S 116°57'32.16" E
View direction: Southeast
Distance to nearest turbine: ≈ 3.6 km
Elevation: 314.2 m

Photo taken at: 10:39 AM on the 26th of October 2023
Camera: Canon EOS 6D Mark II
Lens: Sigma 24mm f/1.4 DG JSM lens



Location reference map



Wind turbines visible beyond extent of view to east and west



Figure 32: Viewpoint 15: South-westerly view from Cowcher Road, Minigin

Notes:
Location: 32°55'23.898" S 117°3'35.046" E
View direction: Southwest
Distance to nearest turbine: ≈ 4.6 km
Elevation: 348.7 m

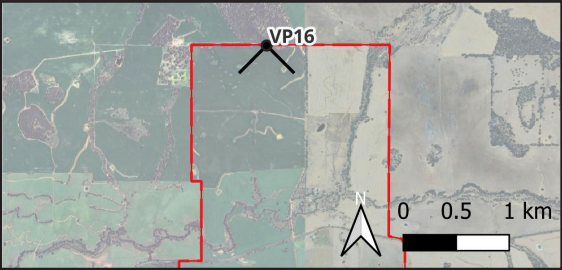
Photo taken at: 09:58 AM on the 27th of October 2023
Camera: Canon EOS 6D Mark II
Lens: Sigma 24mm f/1.4 DG JSM lens



Figure 33: Viewpoint 16: Southerly view from Curnows Road, Minigin

Notes:
Location: 32°54'12.9" S 117°0'7.554" E
View direction: South
Distance to nearest turbine: ≈ 3.7 km
Elevation: 353.5 m

Photo taken at: 11:09 AM on the 26th of October 2023
Camera: Canon EOS 6D Mark II
Lens: Sigma 24mm f/1.4 DG JSM lens



Location reference map



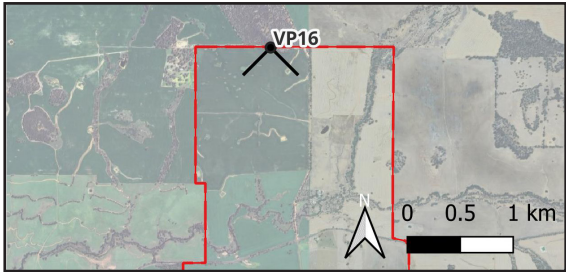
Approximate extent of wind turbines



Figure 34: Viewpoint 16: Southerly view from Curnows Road, Minigin - 75° HFoV

Notes:
Location: 32°54'12.9" S 117°0'7.554" E
View direction: South
Distance to nearest turbine: ≈ 3.7 km
Elevation: 353.5 m

Photo taken at: 11:09 AM on the 26th of October 2023
Camera: Canon EOS 6D Mark II
Lens: Sigma 24mm f/1.4 DG JSM lens



Location reference map



Existing view (≈ 75° HFoV)

Approximate extent of wind turbines

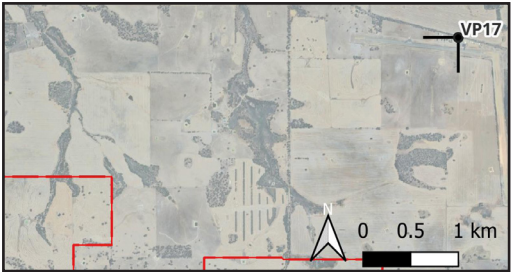


Visualisation (≈ 75° HFoV)

Figure 35: Viewpoint 17: South-westerly view from Clayton Road adjacent to Narrogin Aerodrome, Minigin

Notes:
Location: 32°55'33.456" S 117°4'43.65" E
View direction: Southwest
Distance to nearest turbine: ≈ 6.2 km
Elevation: 333.5 m

Photo taken at: 10:45 AM on the 27th of October 2023
Camera: Canon EOS 6D Mark II
Lens: Sigma 24mm f/1.4 DG JSM lens



Location reference map

