



# Sanjiv Ridge-Sparrow Stage 5 – PAF Material Management Plan

**Sparrow Pit**

26 November 2025



**Mine Earth**

Unit 1, 94 Forsyth Street  
 O'Connor WA 6163  
 Australia

T +61 8 9431 7318

info@mineearth.com.au  
 www.mineearth.com.au

Mine Earth Pty Ltd (ACN 141 633 696)  
 as a trustee for the  
 Mine Earth Unit Trust (ABN 15 751 863 093)

**Document Control**

Author	Checked	Distribution	Date	Version
D.Olafson H. McGill	V. Levy S.Mackenzie	L.Byrne	02/10/2025	Revision A
D.Olafson	G. Wesley	L.Byrne	26/11/2025	Revision 0

**Disclaimer, Confidentiality and Copyright Statement**

© Mine Earth. All rights reserved. No part of this work may be reproduced in any material form or communicated by any means without the permission of the copyright owner.

This document is confidential. Neither the whole nor any part of this document may be disclosed to any third party without the prior written approval of both Mine Earth and the recipient.

Mine Earth and their subconsultants undertook the work and prepared this document, in accordance with specific instructions from the recipient to whom this document is addressed, within the time and budgetary requirements of the recipient. The conclusions and recommendations stated in this document are based on those instructions and requirements, and they could change if such instructions and requirements change or are in fact inaccurate or incomplete.

Mine Earth has prepared this document using data, information and estimates supplied to Mine Earth by the recipient and other individuals and organisations, most of whom are referred to in this document. Where possible, throughout the document the source of data used has been identified. Unless stated otherwise, Mine Earth has not verified such data and information. Mine Earth does not represent such data and information as true or accurate, and disclaims all liability with respect to the use of such data and information. All parties relying on this document do so entirely at their own risk in the knowledge that the document was prepared using information that Mine Earth has not verified.

This document is intended to be read in its entirety, and sections or parts of the document should therefore not be read and relied on out of context.

The conclusions and recommendations contained in this document reflect the professional opinion of Mine Earth, using the data and information supplied. Mine Earth has used reasonable care and professional judgment in its interpretation and analysis of the data. The conclusions and recommendations must be considered within the agreed scope of work, and the methodology used to carry out the work, both of which are stated in this document.

This document was intended for the sole use of the recipient and only for the use for which it was prepared, which is stated in this document. Any representation in the document is made only to the recipient. Mine Earth disclaims all liability with respect to the use of this document by any third party, and with respect to the use of and reliance upon this document by any party, including the recipient for a purpose other than the purpose for which it was prepared.

# Contents

<b>1.</b>	<b>Introduction</b>	<b>4</b>
<b>2.</b>	<b>Key Documentation</b>	<b>6</b>
2.1	Regulatory requirements and guidelines	6
2.2	Data Inputs	6
<b>3.</b>	<b>Background</b>	<b>8</b>
3.1	Geology	8
3.1.1	Regional geology	8
3.1.2	Local geology	8
3.2	Climate	8
3.3	Mining method	8
3.4	Material geochemistry	8
3.4.1	Stage 5 geochemical waste rock characterisation study	8
3.4.2	Sulfur material location in the pits	9
3.4.3	Sulfur block model	9
<b>4.</b>	<b>Mine Waste Storage</b>	<b>12</b>
4.1	Waste Isolation Cell	12
<b>5.</b>	<b>Constraints, Risks and Actions</b>	<b>13</b>
<b>6.</b>	<b>Management Procedures</b>	<b>15</b>
6.1	PAF material management schedule	15
6.2	Material characterisation	15
6.3	Material placement	16
6.4	Cell design	16
6.4.1	WIC cells within the Sparrow Waste Dump	16
6.4.2	WIC Cells within Shark Gully Pit	17
6.5	Responsibilities	20
<b>7.</b>	<b>Forward Work Plan</b>	<b>21</b>

## Figures

Figure 1:	Location of Sparrow and Shark Gully pits	5
Figure 2:	Stage 5 sulfur distribution for the 2023 and 2024 drillholes, insert showing the position of the shale domain (in blue) and the stage 5 pit limit (in yellow)	10
Figure 3:	Stage 5 sulfur distribution in the block model (2021), plan view, showing the position of the shale domain (cd02 in blue), cd10 (shaley chert) & cd12 (BIF)	11
Figure 4:	Shark gully pit - schematic pit backfill design	18
Figure 5:	Sparrow WRD (SPL WD) - WIC conceptual design	19

## Tables

Table 1:	NAF and PAF % and quantities of waste material for Stage 5 Sparrow pit using the drilling database	9
Table 2:	Mining constraints, risks, actions	13
Table 3:	Scheduled Steps	15
Table 4:	Material classification, and management	16
Table 5:	Roles and Responsibilities	20

# 1. Introduction

Atlas Iron Pty Ltd operates the Sanjiv Ridge mine site (the Site) in the Pilbara region of Western Australia, approximately 240 km southeast of Port Hedland. The Sparrow open pit, currently mined above the water table, will be expanded through Stage 4 (above water table) and Stage 5 (extending below the water table).

The Stage 5 waste rock is mostly non-acid-forming (NAF), with 85.4% of intervals recorded in the drilling database containing less than 0.1% sulfur (S). The remaining material is conservatively classified as potentially acid forming (PAF), requiring appropriate management. Saline and neutral metalliferous drainage are not considered a risk. Shale is the primary source of existing and potential acidity, while other lithologies are NAF unless located near sulfur halos. The volume of PAF material requiring management in cells, based on the drilling database, is estimated at 396,463 bcm.

This PAF Material Management Plan (the Plan) has been prepared to guide waste rock sampling, geochemical characterisation, classification, handling, and disposal of PAF materials, for the Stage 5 expansion only. It also outlines the strategies that will be applied for the management of Stage 5 PAF material.

A risk-based approach has been used to develop this plan and the sulfur dataset collected during the preliminary and updated characterisation assessments was used as the geochemical basis. Detailed testing for waste rock extracted during both stages of mining will be ongoing and the outcomes will be used to refine the PAF material management plan as data becomes available.

The document is structured as follows:

- Section 2 – Key Documentation
- Section 3 – Background
- Section 4 – Mine Waste Storage
- Section 5 – Constraints, Risks and Actions
- Section 6 – Proposed Management Procedures
- Section 7 – Forward Work

The document considers:

- Waste rock characterisation program focussing on acid-forming material and associated testing regime.
- Roles and responsibilities.
- Handling, storage, and disposal/placement of reactive material that could generate AMD.
- Hold Point, Witness Point or Records to be developed during the implementation of the program by Atlas to achieve and demonstrate compliance with the approved plan.

The procedures presented in this document will require adjustment as the expansion of the mine progresses. Detailed working instructions based on the procedures detailed in Section 6 will need to be developed for operational purposes.

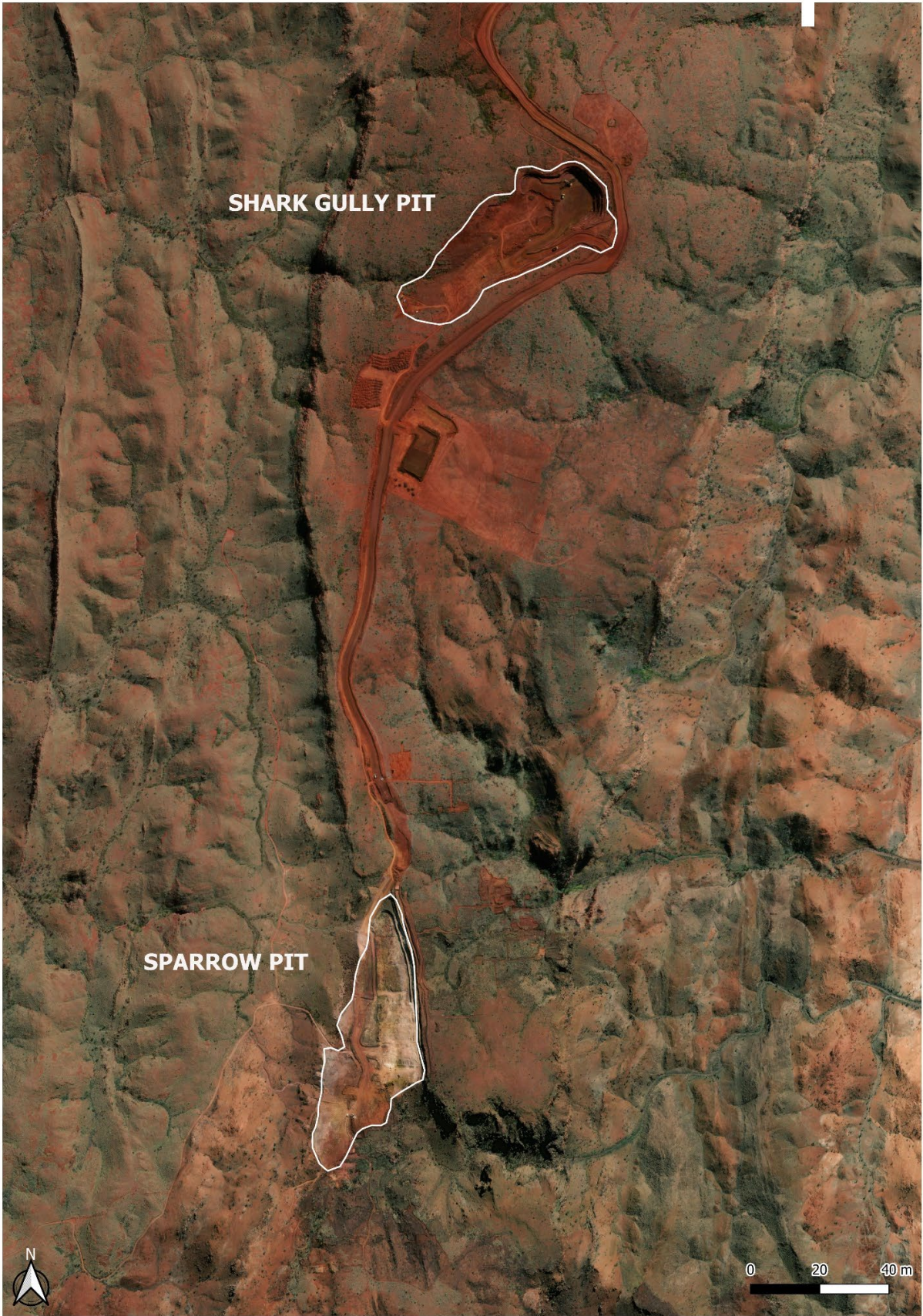


Figure 1: Location of Sparrow and Shark Gully pits

## 2. Key Documentation

### 2.1 Regulatory requirements and guidelines

The following regulatory requirements and guidelines have been considered in putting together this document:

- *Strategic Framework for Mine Closure*. Australian and New Zealand Minerals and Energy Council (ANZMEC) and the Minerals Council of Australia (MCA) 2000.
- *ARD Test Handbook. Project P387A. Prediction and Kinetic Control of Acid Mine Drainage*. Australian Minerals Industry Research Association (AMIRA), 2002.
- *Prediction Manual for Drainage Chemistry from Sulfidic Geological Material*. Mine Environment Neutral Drainage (MEND), 2009
- *Global Acid Rock Drainage (GARD) Guide*. The International Network for Acid Prevention (INAP), 2012 update.
- *Global Cover System Design, Technical Guidance Document*. The International Network for Acid Prevention (INAP), 2016.
- *Preventing Acid and Metalliferous Drainage*, Leading Practice Sustainable Development Program for the Mining Industry. Australian Government. Department of Foreign Affairs and Trade (DFAT), Australian Government, 2016.
- *Materials characterisation baseline data requirements for mining proposals*. Department of Mines and Petroleum (DMP), Government of Western Australia, 2016.
- *Rock Placement Strategies to Enhance Operational and Closure Performance of Mine Rock Stockpiles*. The International Network for Acid Prevention (INAP), 2020.
- *Guideline for preparing Mine Closure Plans*. Department of Energy, Mines, Industry Regulation and Safety (DEMIRS), Government of Western Australia, 2025
- *Guideline for preparing Mining Development and Closure Proposals*. Department of Energy, Mines, Industry Regulation and Safety (DEMIRS), Government of Western Australia, 2025.

### 2.2 Data Inputs

This plan has been informed by the following documentation:

- *Corunna Downs Project: Soil resource assessment and waste characterisation*. Report prepared for Atlas Iron Ltd. MWH, 2016.
- *Corunna Downs Project: Mining Proposal*. Perth: Atlas Iron Ltd. Atlas, 2017.
- *Corunna Downs Project - Waste Rock Geochemical Assessment*. Fremantle: Internal report prepared for Atlas Iron Limited. Mine Earth, 2018.
- *Corunna Downs Project: Mine Waste Characterisation*. Internal report prepared for Atlas Iron Ltd. Mine Earth, 2020.
- *Review of Waste Characterisation Requirements for the Runway South Pit Expansion*. Mine Earth, 2022.
- Current Atlas WRD and open pit design strings (As at 7/5/2024).
- *Sanjiv Ridge Stage 4- Waste Rock Assessment, Detailed geochemical Assessment*. Mine Earth, 2024.
- *Sanjiv Ridge Stage 4- PAF Material Management Plan*. Mine Earth, 2024.
- *Sanjiv Ridge Mine Closure Plan, 179-EN-PLN-0003 v7.0*. Atlas Iron, 2024.
- *Sanjiv Ridge Stage 5 - Waste Rock Geochemical Characterisation – Sparrow Pit Update*. Mine Earth, 2025.

- Recent drilling databases for the Sparrow (formerly Split Rock) project area, including data for iron and sulfur content, lithology, stratigraphy and rock quality designation (RQD).
- Mining surfaces for all planned pits, from Stage 3 to Stage 5:
  - spl\_pit\_u\_dc\_v5 (Sparrow Stage 3)
  - spl\_pit\_u\_bwt1\_v1 (Sparrow Stage 4)
  - spl\_bwt\_pit (Sparrow Stage 5)
- Mining surfaces for geological units and mineralisation
- Block model including data for iron, sulfur, lithology, stratigraphy and volume: spl\_202110

## 3. Background

### 3.1 Geology

#### 3.1.1 Regional geology

The Project is hosted by the Cleaverville Formation, part of the Gorge Creek Group located in the Coongan Greenstone Belt. The dominant lithologies at the Project are banded iron formation (BIF), chert and other sedimentary lithologies, including sandstones, siltstones and shales. The BIF rocks are associated with jaspillites and interbedded cherts. Shales can contain variable iron contents and can be sulfidic and carbonaceous below the weathering horizon (Atlas, 2017).

#### 3.1.2 Local geology

The iron ore mineralisation is distributed through most BIF units as goethitic or hematitic ironstone (with hypogene magnetite-martite mineralisation) and displays massive to vuggy textures. Silica leaching and supergene enrichment have further concentrated the ore mineralisation (Atlas, 2017).

The geology of the Sparrow deposit consists of westerly-dipping, sub-vertical beds of alternating BIF and chert, bounded on the east and west by shale. Several major shears converge at the deposit, resulting in high strain zones and hydrothermal brecciation (Atlas, 2024b).

### 3.2 Climate

The site lies within the Pilbara region, which experiences an arid tropical climate with predominantly summer rainfall and cyclonic events (Atlas, 2017). The Bureau of Meteorology (BoM) data for Marble Bar shows a mean monthly range for daily minimum temperature of 12-26°C and for daily maximum temperature of 27-42°C.

The long-term mean annual rainfall is approximately 394 mm, although substantial variation occurs. Mean monthly rainfall peaks during the summer months between January and March (up to 104 mm) and is lowest in spring. Average annual evaporation for the year is ~4,100 mm.

### 3.3 Mining method

Stage 5 operation will be mined using drill and blast (D&B). Once blasted, ore and waste rock will be loaded separately into haul trucks and transported to the run of mine (ROM) pad and WRLs respectively. From the ROM pad, ore will be crushed and screened onsite using a crushing and screening plant to produce lump and fines products. The processed product will be transported using road trains to Port Hedland for export.

### 3.4 Material geochemistry

#### 3.4.1 Stage 5 geochemical waste rock characterisation study

The Stage 5 waste rock characterisation has been undertaken across two studies, incorporating data from the drilling database and samples collected in 2023 and 2024 (Mine Earth, 2025). A summary of the findings is provided in Appendix A.

The Stage 5 pit contains predominantly material from the regolith, mineralisation and sedimentary lithological groups, with six individual lithologies each representing more than 5% of the intervals logged: goethite, hematite, hematite/goethite, chert, shale and BIF.

The primary sulfur-bearing lithology is shale, with sulfur concentrations ranging from <0.01% to 5.2% and a median sulfur content of 0.08%. Shale comprises ~12% of the total pit material and 26% of the waste material, though only 8% of the shale intervals have a sulfur content above the conservative cut-off value of 0.1% S

The distribution percentage of the total waste material is provided in Table 1 and indicates that approximately 85% of the intervals logged have a sulfur content below 0.1% S and can be classed as NAF. If a 0.1% S cut-off is applied, 15% of the total waste, representing over 1.5 million tons, can be classed as PAF and will require storage in PAF cells. The PAF material can be broken down into two sub-categories PAF-Low Capacity (PAF-LC) and PAF as shown in Table 1, with 59% of the PAF material being low capacity.

The final volumes/quantities of material to be stored and the timing of their extraction will be closely tied to mine scheduling.

**Table 1: NAF and PAF % and quantities of waste material for Stage 5 Sparrow pit using the drilling database**

Classification	%S	Stage 5 pit Waste Only		Management requirement
		%	tonnes	
NAF	<0.1%S	85.4%	6,844,533	NAF – no special management requirements (preferentially used in armouring and final outer rehab surfaces)
PAF-LC	0.1-0.3%S	4.5%	855,400	PAF - place within PAF encapsulation cells or in-pit disposal
PAF	>0.3%S	10.1%	602,987	

Note: Waste was considered at a cut off of Fe<45 %

### 3.4.2 Sulfur material location in the pits

Elevated zones of sulfur are concentrated along pit margins where shale lenses are developed. Figure 2 and Figure 3 show this distribution with elevated sulfur clustering in shale rich domains (cd02, cd10, cd12). These results reinforce that PAF waste is not disseminated uniformly, but instead occurs in discrete, lithologically-controlled bodies.

As the PAF material is concentrated in discrete zones, it will be carefully mapped and managed to ensure its controlled placement within designated waste encapsulation cells.

### 3.4.3 Sulfur block model

The existing sulfur block model dates back to 2021 and currently over-estimates the volume of sulfur. Further drilling is planned in 2026 to refine the model and, once completed, the block model will be updated with the data collected in 2024 and 2026 respectively. The sulfur block model will be used to refine domains of high sulfur, which will assist Operations with the management and scheduling of the waste rock.

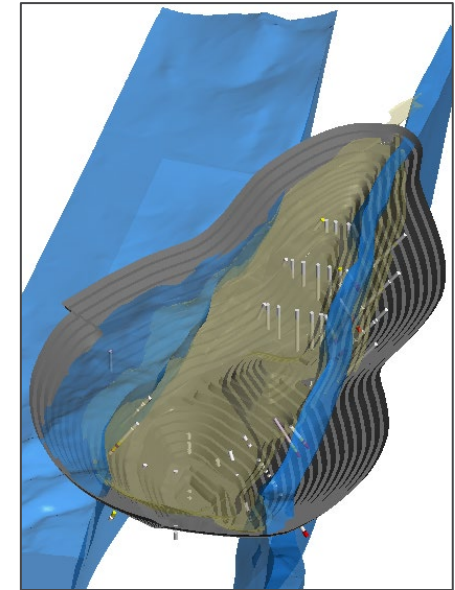
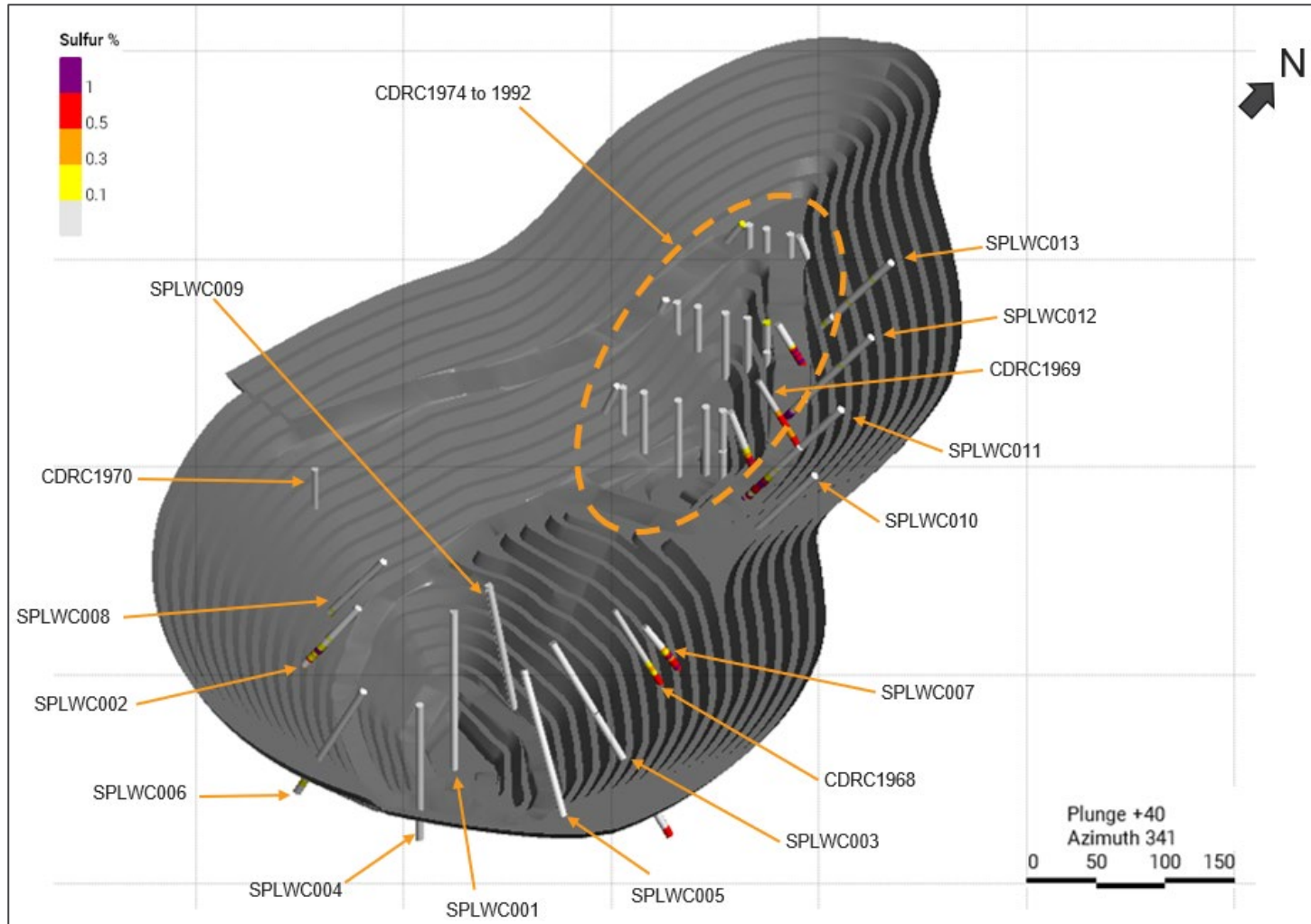


Figure 2: Stage 5 sulfur distribution for the 2023 and 2024 drillholes, insert showing the position of the shale domain (in blue) and the stage 5 pit limit (in yellow)

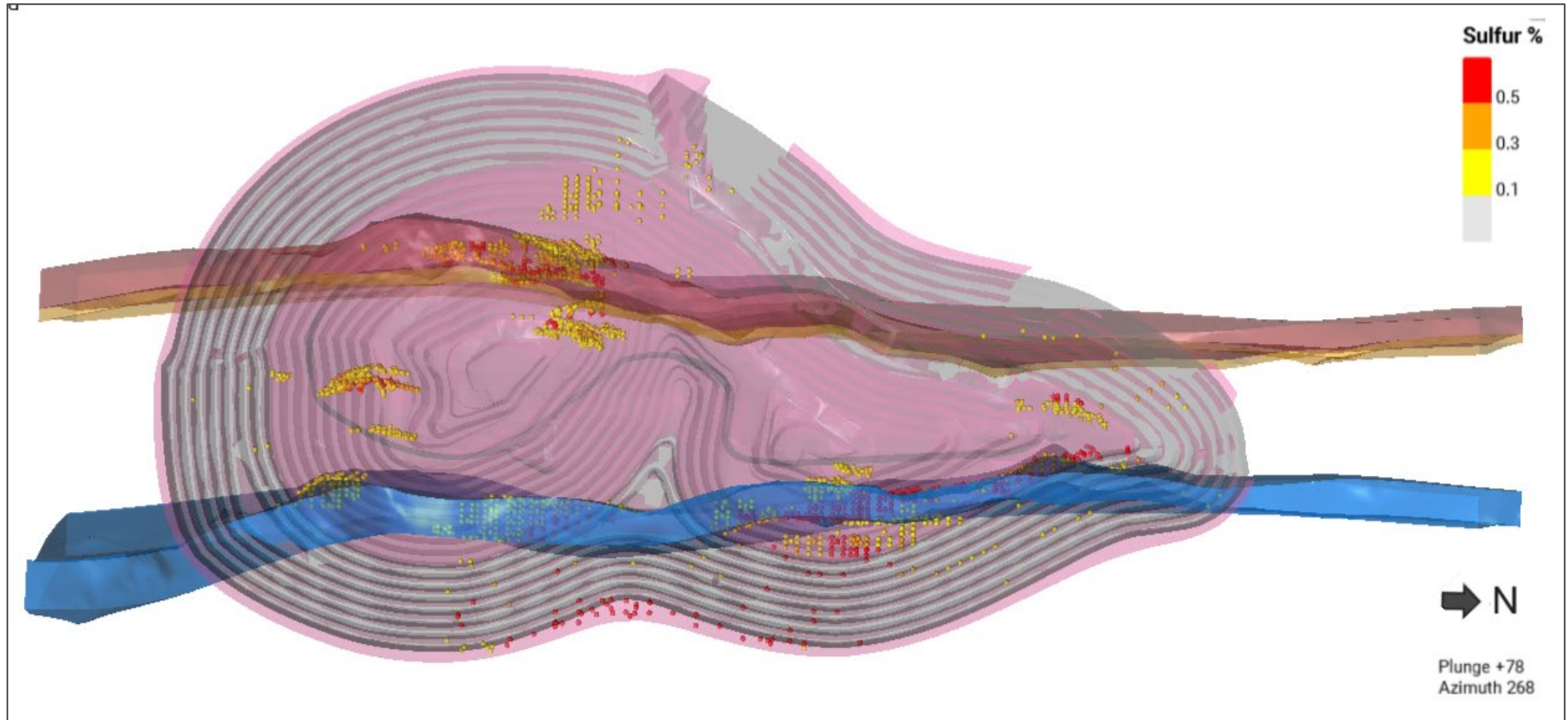


Figure 3: Stage 5 sulfur distribution in the block model (2021), plan view, showing the position of the shale domain (cd02 in blue), cd10 (shaley chert) & cd12 (BIF)

## 4. Mine Waste Storage

This section outlines the intended approach to waste management and presents the strategic framework for where and how different waste types will be placed during mining.

The management of waste material at Stage 5 is planned to ensure that potentially acid forming material (PAF) and other problematic materials are appropriately contained and do not present long-term environmental risks. The mine scheduling and waste placement strategy is designed to isolate PAF waste in engineered storage facilities while enabling the beneficial use of non-acid forming (NAF) waste for landforms and rehabilitations surfaces.

### 4.1 Waste Isolation Cell

The management of the PAF waste will be incorporated into mine scheduling by designing a network of Waste Isolation Cells (WICs) within the Sparrow Waste Dump (SPL WD), with additional storage capacity available in Shark Gully in-pit backfill. These WICs are intended to provide secure, long-term encapsulation of problematic material and ensure separation from surface exposure.

The preliminary SPL WD design provides approximately 2.5 Mm<sup>3</sup> of encapsulation capacity, with further contingency available in Shark Gully. This ensures that material identified as PAF during mining can be placed directly into engineered containment, to manage geochemical risk at source.

The SPL WD and Shark Gully in-pit dump disposal ensures isolation of PAF material from surface and subsurface water pathways, thus reducing the potential for acid generation and impacted run-off and seepage.

## 5. Constraints, Risks and Actions

At Sanjiv Ridge, waste rock removal follows the mining schedule defined by Atlas. Mine waste is transported by truck directly from the excavation area to the placement area. The constraints, risks, and actions for material management are presented in Table 2.

**Table 2: Mining constraints, risks, actions**

Constraints	Risk	Action
Problematic material needs to be transported to the correct emplacement area (WIC).	PAF material is left in the open and may represent a risk, e.g. PAF material may oxidise and generate AMD.	Coordinate with geologists and surveyors to ensure PAF material is identified before drill and blast (D&B) so that it can be cleared in a timely manner.  Update the sulfur block model regularly and define domains of high sulfur content that will guide operation in locating high sulfur content waste.
	Problematic material may not be identified and may be directed to an emplacement for inert materials.	Undertake regular sampling and validation testing of the waste material. The frequency of the validation is based on the volumes and types of material mined.
		Update the sulfur block model regularly and define domains of high sulfur content that will guide operation in locating high sulfur content waste.
		Develop reporting procedures and communication between the geologists and the truck fleet.
	Remove problematic material and place in the WIC.	
Cell sizing is too small.	Review sulfur content and cell sizing as mining progresses.	
Site needs to go into Care and Maintenance (C&M).	Problematic materials may be left unmanaged and may represent a risk, e.g. uncovered PAF material may oxidise and generate AMD; tip heads of exposed low stability materials may erode.	Develop a procedure to ensure waste rock is appropriately managed before C&M occurs. Prepare a C&M plan to identify specific risks and develop a mitigation strategy.
Problematic material needs to be stored safely.	WIC is poorly planned.	Develop cell design and ensure materials required to build the cell and cover the problematic material are set aside and available for use. Review WIC capacity and amend design as required based upon forecasted volumes of problematic wastes.
	AMD seepage leaks from the cell.	Conduct hydrological and hydrogeological studies (including

Constraints	Risk	Action
		<p>monitoring) to understand water movements.</p> <p>Develop a cover design for closure based upon locally available materials.</p> <p>Implement a quality program during WIC construction and cover works to ensure specifications are met.</p>
Stage 5 material is PAF.	Stage 5 material is excavated and misplaced.	Increase monitoring and material analysis when approaching the interface above/below water table, especially in the shale material.

## 6. Management Procedures

### 6.1 PAF material management schedule

The consecutive actions required to manage the material are presented in Table 3. The classification of the material should not be limited to inert or problematic but should also consider identifying materials for closure so that these can be stored adequately for future rehabilitation, including materials for the WIC cover, rock armour and final surface materials.

**Table 3: Scheduled Steps**

Action	Description
Collect samples (see Section 6.2)	Coordinate geochemical sampling with sampling for D&B so that material can be classed as inert or problematic material (or potentially beneficial materials such as armour or store and release cover material) ahead of excavation.
Analyse samples and classify materials (see Section 6.2)	Coordinate with local (e.g. onsite) laboratory to analyse for sulfur and classify material as inert or PAF.
Place materials (see Section 6.3)	Decide on emplacement location: WIC or in Shark Gully pit for material of concern, WRL for inert material, or dedicated stockpiles for closure materials. Coordinate with surveyors and truck fleet to place material adequately. Record placement and ensure surveys are updated.
Validate pit information and update block model information (pit, WIC and WRL)	Update the pit block model by refining geological and geochemical knowledge. Update sulfur block model and define domains of high sulfur content to be delineated on the ground. Consider updating WRL block models in planning for closure.
Update inventory	Update the resource and inventory spreadsheets. The inventory spreadsheet should include the LoM forecast for each geochemical category of material (inert, problematic), their potential use (oxide, armour and topsoil resources) and the emplacement (WIC, in-pit, WRLs).

### 6.2 Material characterisation

During operations, the material should be characterised to validate the findings of the geochemical studies and update the block model and the procedures if required. The sampling, analysis and quality program (SAQP) should consider:

- Regular S% monitoring on blasthole material using the mine site laboratory.
- Standard sampling frequency of one sample per ~400 m<sup>3</sup>.
- Standard analysis to include total sulfur (TS), pH<sub>1:2</sub>, electric conductivity (EC<sub>1:2</sub>) and net acid generation pH (NAGpH).
- Detailed geochemical characterisation to be undertaken on 1 in every 10 samples to increase the characterisation of the different lithologies.

## 6.3 Material placement

Table 4 provides guidance on the management of the material once it has been analysed and classified.

**Table 4: Material classification, and management**

Material	Sulfur Criteria	Management
Waste rock	<ul style="list-style-type: none"> <li>• NAF &lt;0.1%</li> <li>• PAF-LC 0.1%-0.3%</li> <li>• PAF &gt;0.3%</li> </ul>	<ul style="list-style-type: none"> <li>• Minimise exposure at outermost surface of final rehabilitated landform, due to physical instability.</li> <li>• NAF – used as basal layer and encapsulation ‘side walls’ of HC PAF cells</li> <li>• LC PAF - used as basal layer and encapsulation ‘side walls’ of HC PAF cells</li> <li>• HC PAF - placed in PAF encapsulation cells or in-pit</li> </ul>

## 6.4 Cell design

Problematic material including PAF waste and low-stability material, such as shale waste, will be contained within a WIC. The purpose of the WIC is to limit the exposure of the problematic material types to surface and subsurface water and therefore mitigate their potential impacts on the environment by erosion or affected seepage. Where there is adequate storage capacity, run-of-mine waste may also be placed within the WIC.

### 6.4.1 WIC cells within the Sparrow Waste Dump

A preliminary WIC design for SPL WD is presented in Figure 5. The WIC design includes the following features:

- A basal layer, with a minimum thickness of 2 m, constructed of run-of-mine NAF waste rock to restrict the potential for increased seepage inflows along the interface with natural ground.
- At closure a store-and-release cover system should be constructed over the WIC to limit net-percolation through the cover and seepage to the problematic material. The store and release cover should be designed to achieve a target net-percolation of <10%.
- Positioning of the WIC to limit the potential for future exposure by erosion.
- Where practicable, the WIC should not be placed beneath berm surfaces.
- Surface water runoff during operations to be contained on the WIC cell, and the top surface graded at closure with a minimum slope of 2% to limit the potential for net-percolation directly above the WIC and facilitate run-off and drainage retention / evapotranspiration in alternative areas.
- Waste placement by either paddock dumping and traffic compaction or by low <2 m thick tip heads, to ensure tight construction and reduce seepage potential within the WIC.
- The WIC should be designed with sufficient capacity for forecast problematic waste types (PAF waste and low stability waste) with an appropriate degree of contingency available. The WIC design may be amended throughout mining as certainty in volumes around problematic materials evolves. The WIC may be constructed in discontinuous layers if this improves the efficiency of mining operations.
- The final location of the WIC should be recorded in survey files and relevant construction records retained.

## 6.4.2 WIC Cells within Shark Gully Pit

An ideal pit backfill design for Shark Gully Pit is presented in Figure 4. The pit backfill design will incorporate the same PAF encapsulation principles applied to the WIC, with additional requirements specific to in-pit placement.

Key features:

- PAF material will not be placed in zones subject to fluctuating water tables, where cycles of wetting and drying could promote oxidation.
- PAF placed below the final water table (where available) will be maintained in a permanently saturated condition, well beneath the zone of seasonal fluctuation.
- Backfilling will be carried out in controlled lifts to reduce differential consolidation, minimise preferential flow pathways, and restrict seepage through the PAF.
- At closure, a store-and-release cover system will be constructed across the final surface to limit net-percolation and seepage to the problematic material. The store and release cover should be designed to achieve a target net-percolation of <10%.
- The final surface will be graded with a minimum slope of 2% to promote surface drainage, reduce infiltration, and minimise erosion risk, consistent with WIC encapsulation principles.
- Surface water management will ensure runoff is directed away from encapsulated PAF zones and onto stable, non-reactive surfaces.
- Backfill capacity and configuration will be planned to accommodate forecast PAF volumes with contingency for uncertainty.
- Construction records and survey data will document the location, extent, and encapsulation of PAF in the backfill for closure verification.

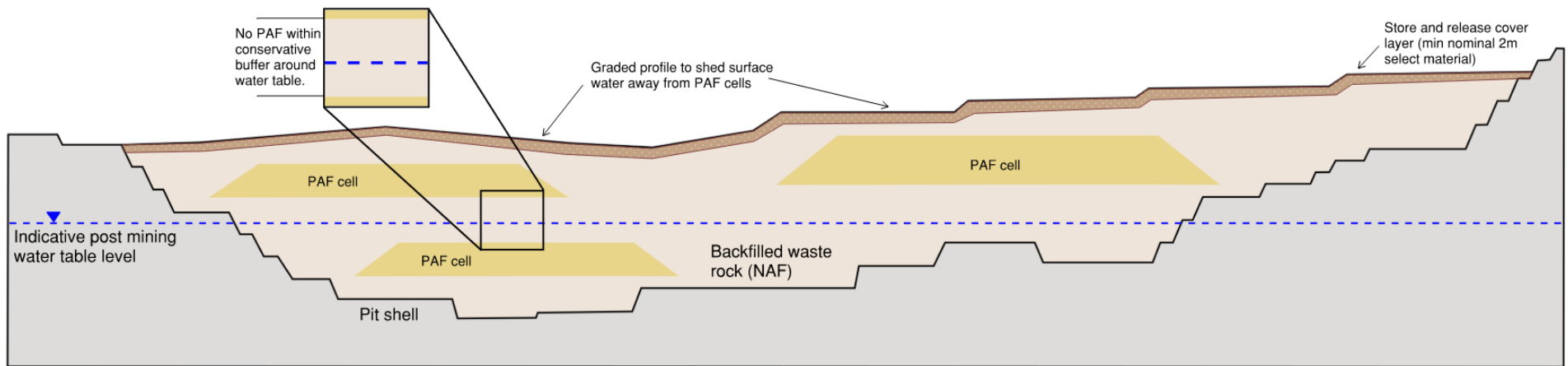


Figure 4: Shark gully pit - schematic pit backfill design.

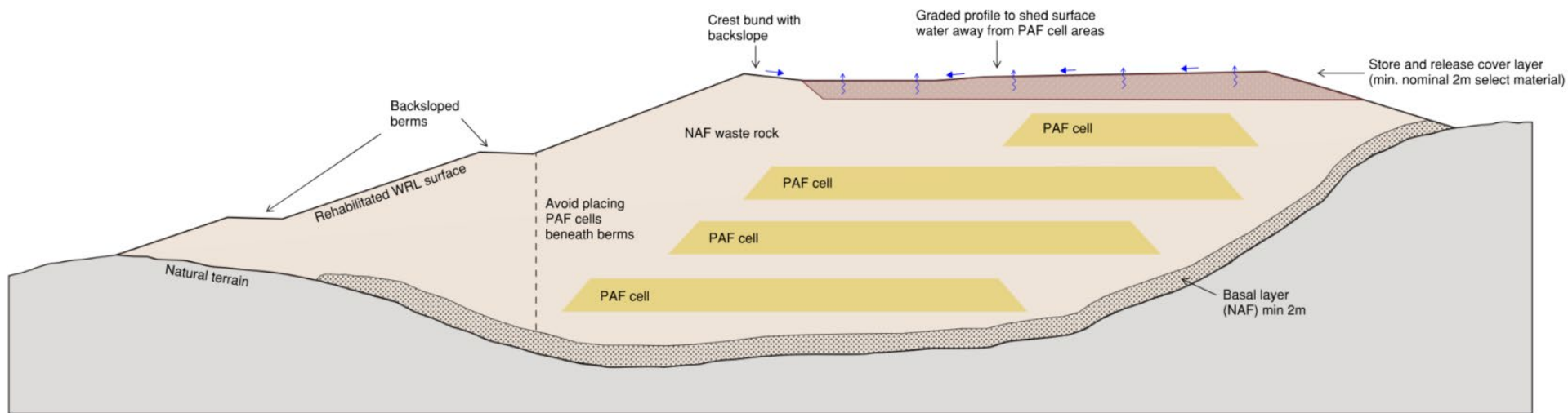


Figure 5: Sparrow WRD (SPL WD) - WIC conceptual design

## 6.5 Responsibilities

The responsibilities as defined by this Management plan are outlined in Table 5.

**Table 5: Roles and Responsibilities**

Role	Responsibility
Mine Manager	<ul style="list-style-type: none"> <li>• Implement the plan and ensure that systems exist and adequate resources are allocated to assist in the implementation of the Plan.</li> <li>• Ensure the management plan is reviewed yearly.</li> </ul>
Operational Manager	<ul style="list-style-type: none"> <li>• Ensure that the operational controls and monitoring activities are implemented, maintained and adequately resourced.</li> <li>• Ensure that appropriate records are maintained and made available as required.</li> <li>• Participate in regular reviews of the Plan and approve any changes to the Plan.</li> <li>• Ensure that the operational aspects of the Plan are consistent and compatible with other operational procedures and activities.</li> </ul>
Mine Planning	<ul style="list-style-type: none"> <li>• Ensure adequate scheduling to enable problematic waste to be disposed within the WIC and/or Shark Gully pit.</li> </ul>
Environmental Manager	<ul style="list-style-type: none"> <li>• Participate in meetings that relate to the Plan and provide advice on the environmental implications of any changes that may be proposed.</li> <li>• Be responsible for scheduling and implementing the environmental monitoring program, annual review, audits and inspections.</li> </ul>
Geology team	<ul style="list-style-type: none"> <li>• Organise for material sampling and, updates to the block model.</li> <li>• Tag problematic material in the block model.</li> </ul>
Environmental Specialist/closure specialist	<ul style="list-style-type: none"> <li>• Ensure the material analysis is undertaken and the material is classed.</li> <li>• Inform surveyors and truck fleet of placement.</li> </ul>
Surveyors	<ul style="list-style-type: none"> <li>• Record material movements.</li> <li>• Undertake surveys of WIC and stockpiles.</li> <li>• Document location of hostile materials.</li> </ul>
Operational Personnel	<ul style="list-style-type: none"> <li>• Apply the operational procedures developed to control environmental risks related to the plan.</li> </ul>

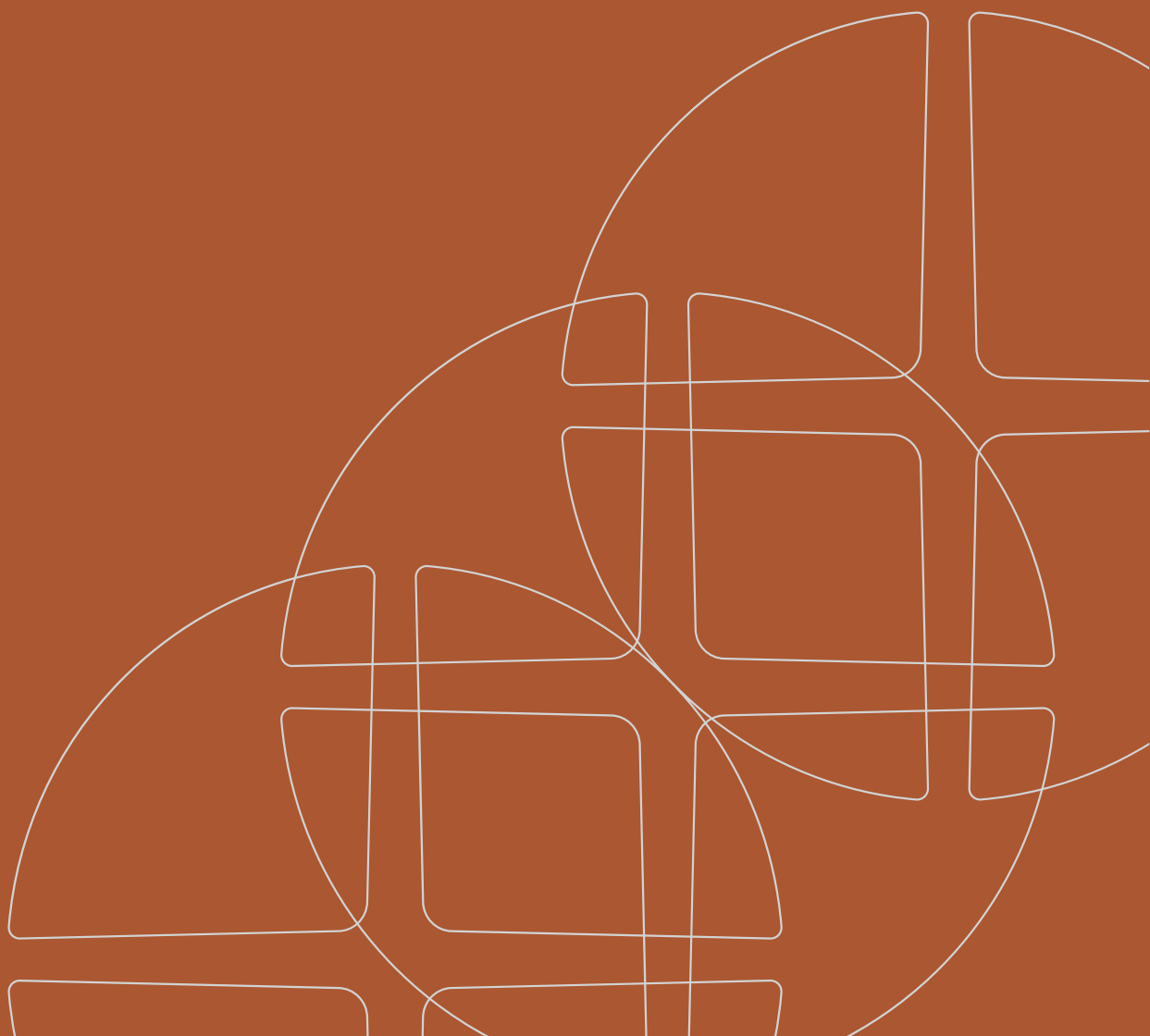
## 7. Forward Work Plan

The recommended forward work plan for PAF management is:

- Review and update the sulfur block model with 2024 and 2026 drilling to better guide management of the PAF material during operation
- Refine volumes of PAF material and location to assist with the cell design.
- Once relevant, as-mined waste volumes are available, prepare a design for the WIC and in-pit cover systems. This would include refinement of net percolation and other design requirements in response to the understanding of the risk posed by PAF waste within the WIC and shark gully pit, a sampling and analysis program targeted at potential cover materials and PAF waste, and vadose zone modelling to develop a preferred cover design.
- Develop a Sampling and Analysis Quality Plan, supported by adequate site procedures and making the most of bench blasting. This would ensure that the pit material is routinely analysed and classified.
- Develop adequate Standard Operating Procedures for each step identified in the schedule.

# Appendix A

## Geochemical Material Characterisation Summary



## A.1 Geochemical Material Characterisation Study

### A.1.1 Drilling Database Sulfur Assessment - Stage 5

The drilling database was assessed to determine the spatial coverage of drillholes across the deposit. The drilling database was “tagged” with the planned pit shells and only total sulfur content in the Waste (cut-off grade Fe 45%) was considered. The datasets for stage 5 are considered comprehensive across both pits and are presented as box and whisker plots for the major lithologies (>5%) in Figure A 1. Waste rock sulfur contents across lithologies for the Stage 5 pits are presented in Table A 1. The spatial distribution of the sulfur across the pits is presented in Figure A 2.

The data shows that 84.5% of the sulfur measurements for the Sparrow pit waste rock were less than 0.1% TS, a conservative cut-off value used in the absence of NAGpH and ANC measurements. The Sparrow pit figure (Figure A 2) shows that some areas of the pit are enriched in sulfur, in particular the edges of the pit, where shale is located.

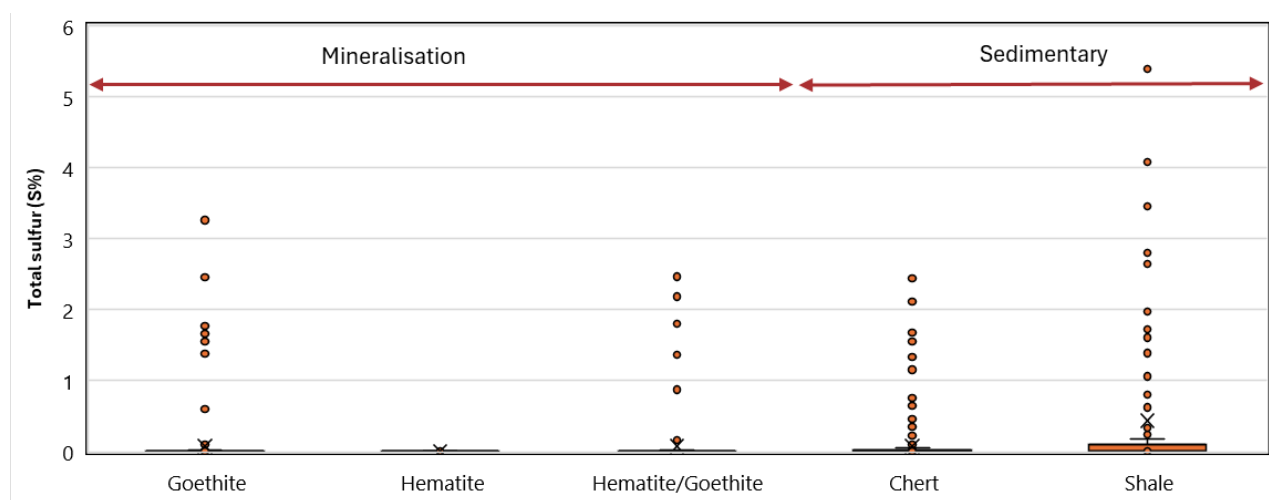


Figure A 1: Box and Whiskers plot for Sparrow, stage 5 data major lithologies

Table A 1: Waste rock sulfur content across lithologies for the Sparrow Stage 5 pit (major lithologies >5% in bold)

Group	Lithology	Total samples	Median S%	Maximum S%
Regolith	Clay	30	0.01	0.3
Mineralisation	<b>Goethite</b>	<b>253</b>	<b>0.007</b>	<b>3.3</b>
	<b>Hematite/Goethite</b>	<b>161</b>	<b>0.005</b>	<b>2.5</b>
	<b>Hematite</b>	<b>66</b>	<b>0.003</b>	<b>0.04</b>
Sedimentary	<b>Chert</b>	<b>370</b>	<b>0.003</b>	<b>2.4</b>
	<b>Shale</b>	<b>169</b>	<b>0.08</b>	<b>5.4</b>
	<b>Bif</b>	<b>38</b>	<b>0.001</b>	<b>0.5</b>
Igneous	Mafic	4	0.39	2
Veining	Quartz	8	0.08	2.7

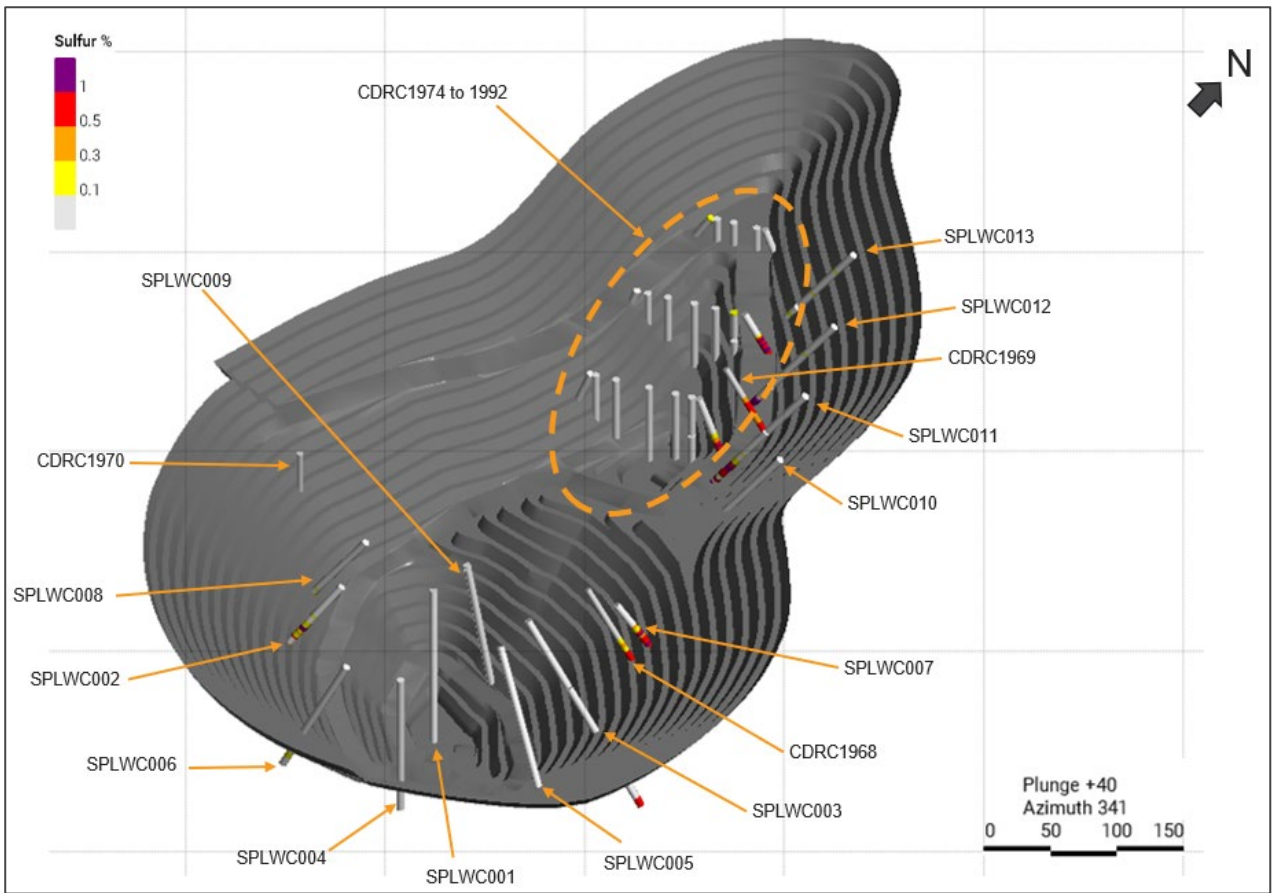


Figure A 2: Stage 5 sulfur distribution for the 2023 and 2024 drillholes, insert showing the position of the shale domain (in blue) and the stage 5 pit limit (in yellow)