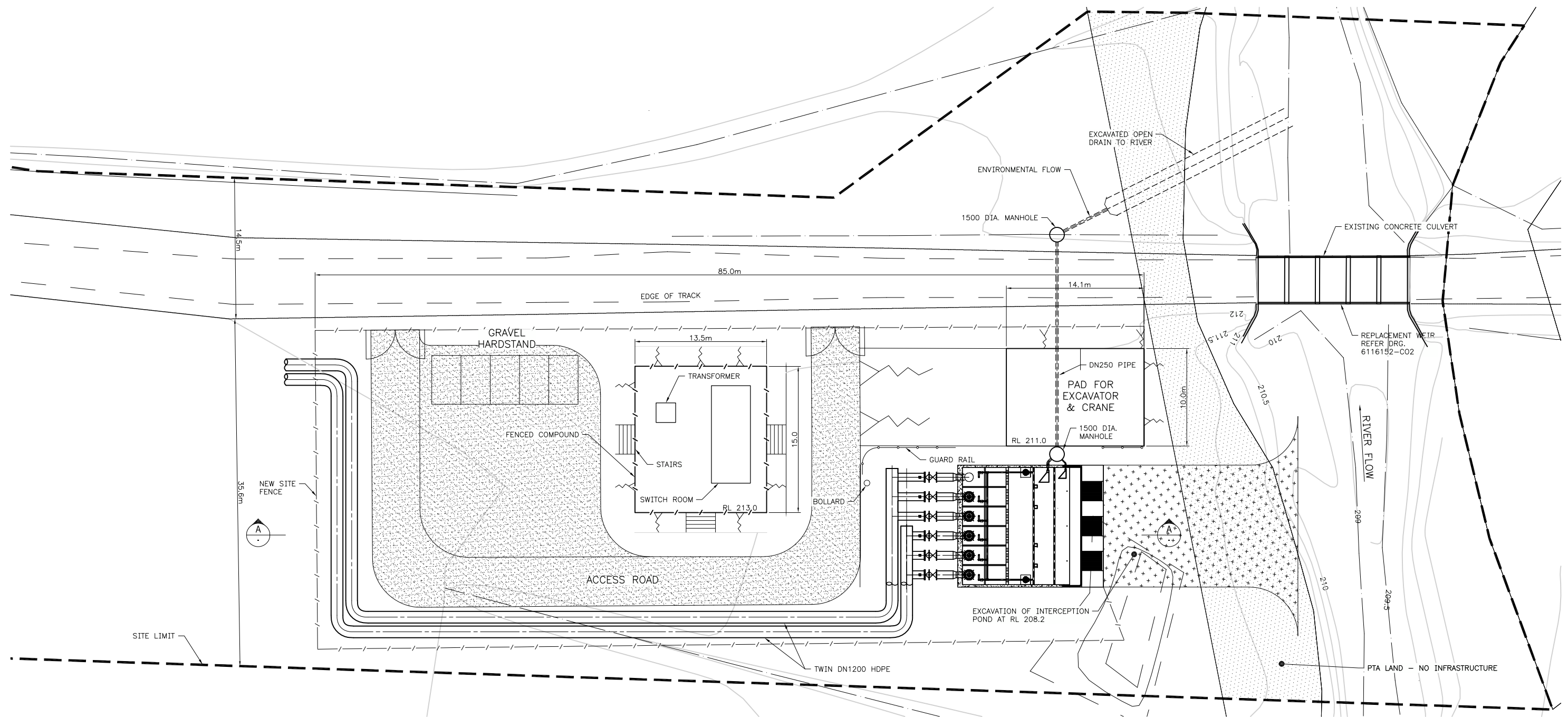


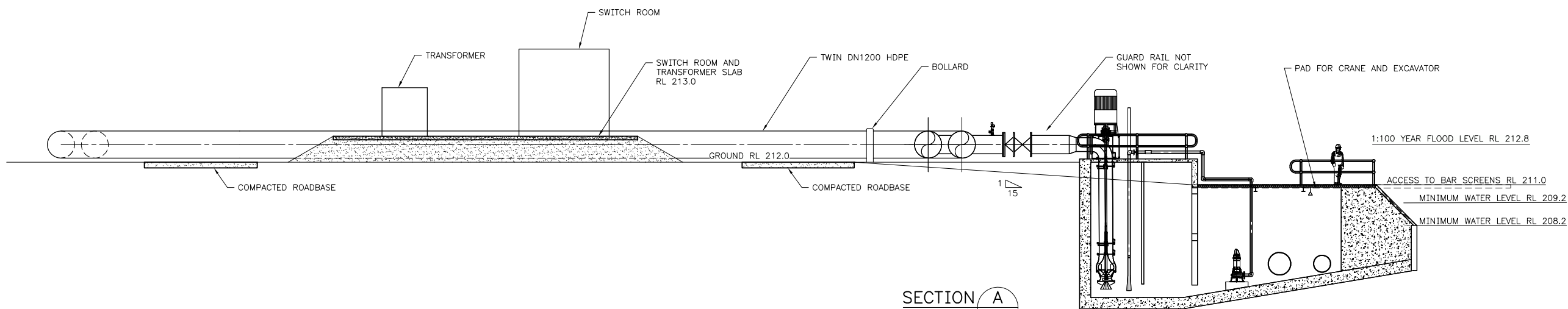
Myalup-Wellington Project Stage 1 (Above Dam Works)

EPA Referral Supporting Information, Appendix 2: Concept design drawings

- 1. Buckingham pump station – site layout / section*
- 2. Water treatment plant – site layout*
- 3. Water treatment plant – 3D rendering*
- 4. Land constraints and locations plan*



SITE PLAN
SCALE 1:200



SECTION A
SCALE 1:100

PRELIMINARY

C	ENVIROMENTAL DISCH. MODIFIED	MP	18-06-18
B	PUMP STATION STRUCT. MOVED	MP	12-06-18
rev	description	app'd	date

COLLIE WATER
WELLINGTON MYALUP
BUCKINGHAM PUMP STATION
SITE LAYOUT

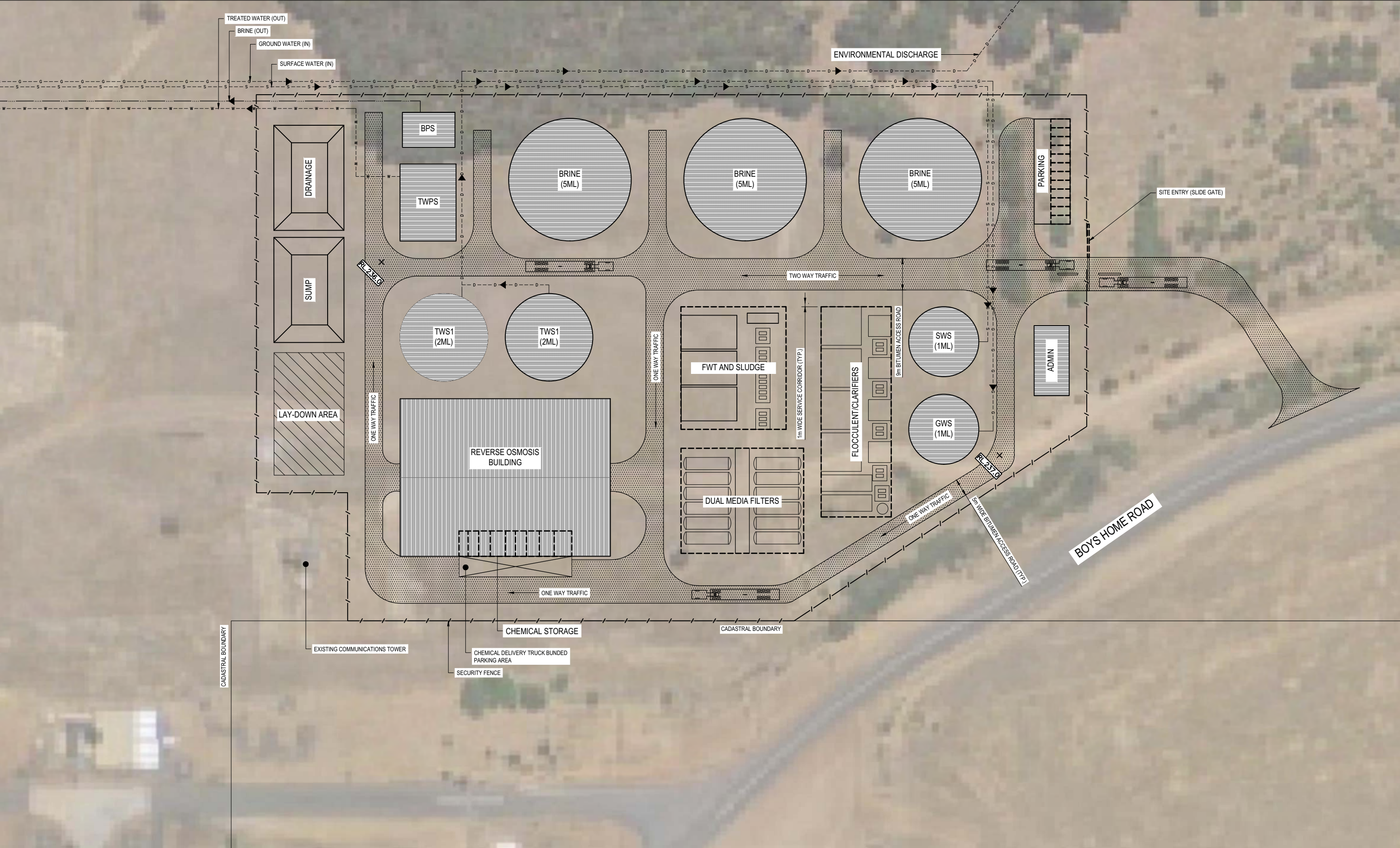


Level 10, 999 Hay Street Perth WA 6000
PO Box Y3106 Perth WA 6832 Australia
T 61 8 6222 8222 F 61 8 6222 8555
E permail@ghd.com.au W www.ghd.com

Conditions of Use: This document may only be used by GHD's client (and any other person who GHD has agreed can use this document) for the purpose for which it was prepared and must not be used by any other person or for any other purpose.

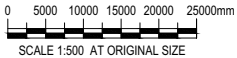
scale | **AS SHOWN** for A1 | job no. | 61-6135152
date | MARCH 2017 | rev no. | C

approved (PD) **SK002**



SITE PLAN
SCALE 1:500

A	ISSUED FOR CLIENT COMMENT	SMT			
No	Revision	Note: * indicates signatures on original issue of drawing or last revision of drawing	Drawn	Job Manager	Project Director



Level 10, 999 Hay Street Perth WA 6000
PO Box Y3106 Perth WA 6832 Australia
T 61 8 6222 8222 F 61 8 6222 8555
E permail@ghd.com.au W www.ghd.com

DO NOT SCALE

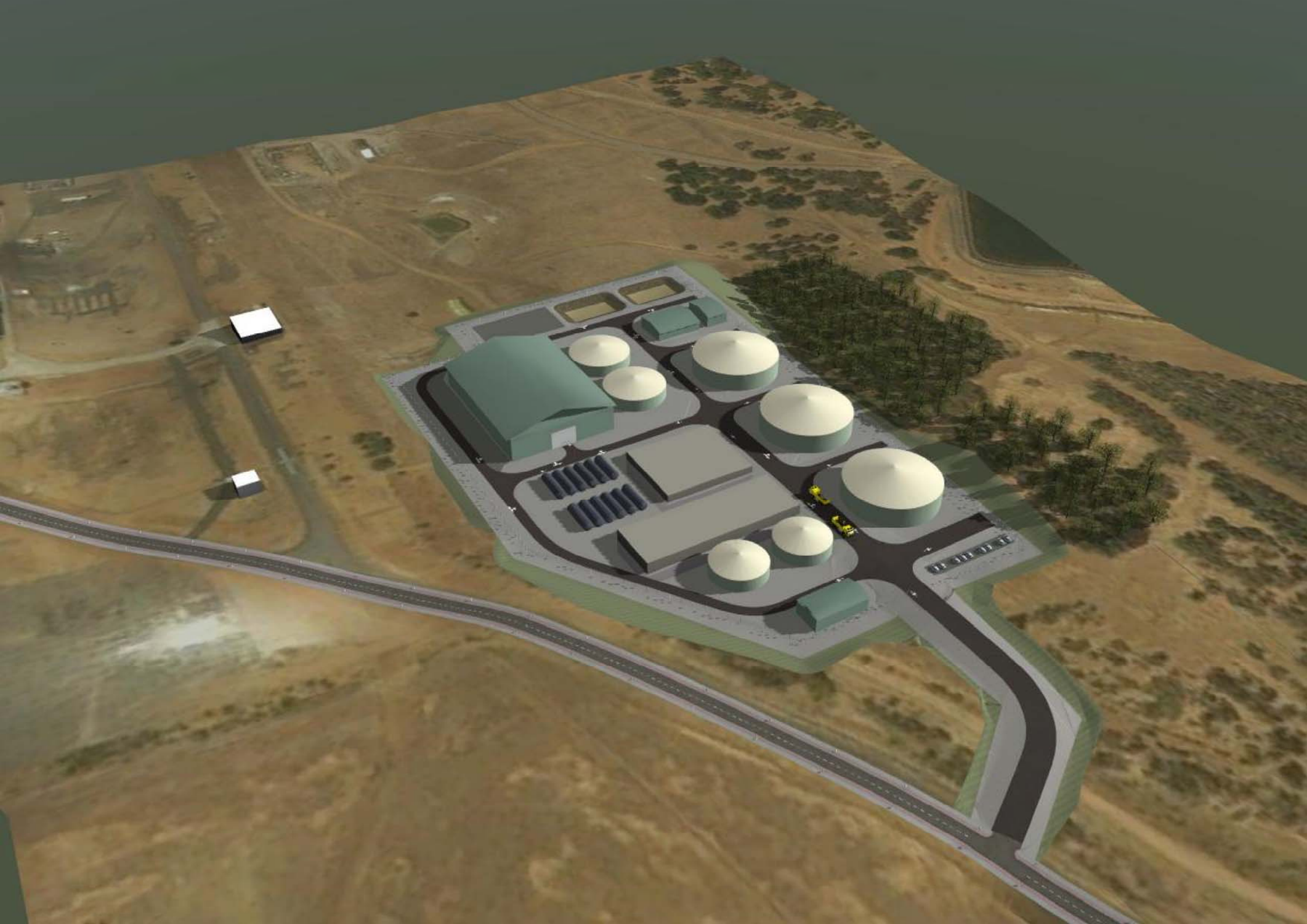
Conditions of Use.
This document may only be used by
GHD's client (and any other person who
GHD has agreed can use this document)
for the purpose for which it was prepared
and must not be used by any other
person or for any other purpose.

Drawn	S.TULLY	Designer	M.PARK
Drafting Check		Design Check	
Approved (Project Director)			
Date			
Scale	AS SHOWN		

This Drawing must not be
used for Construction unless
signed as Approved

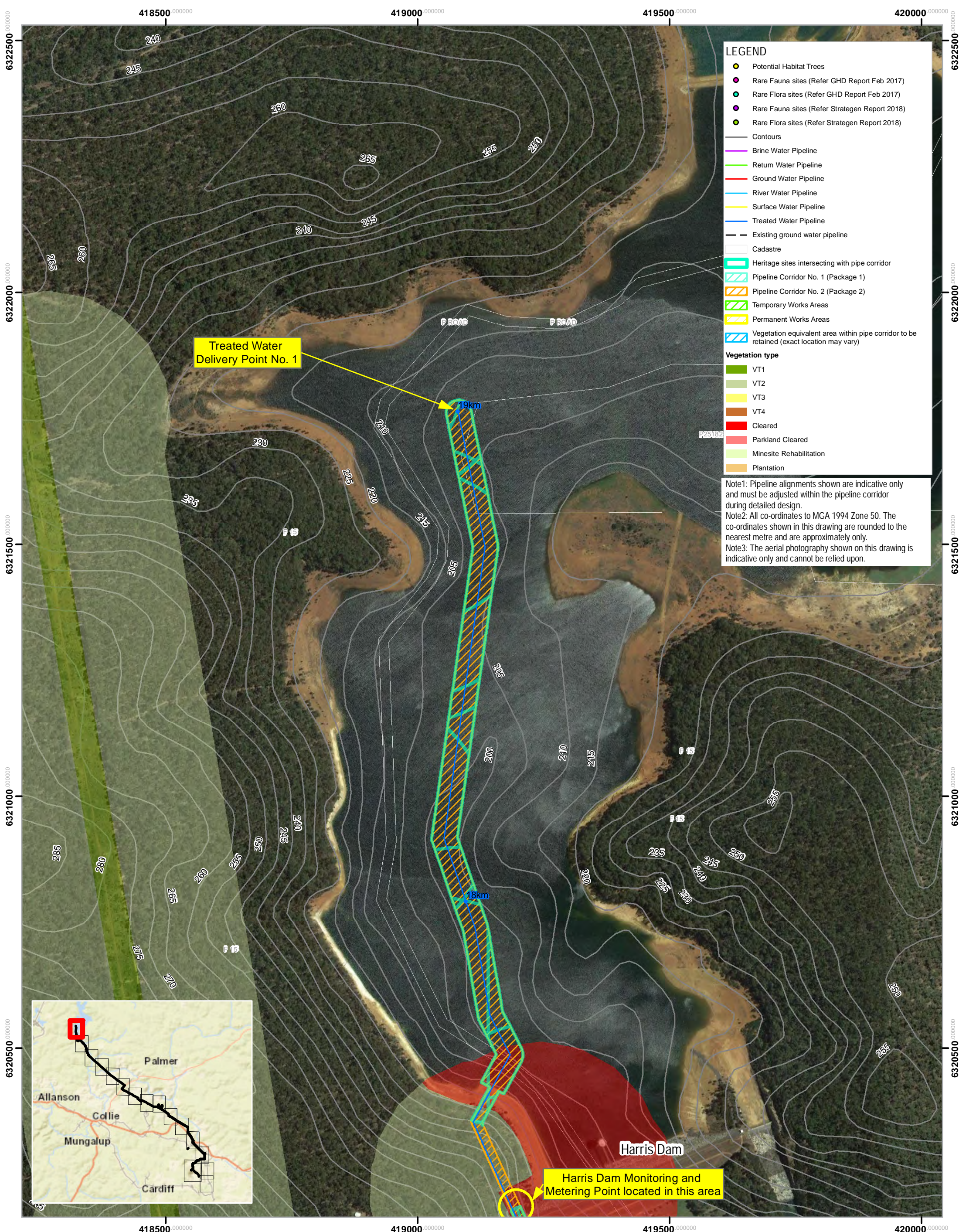
Client	COLLIE WATER		
Project	MYALUP WELLINGTON WATER FOR FOOD PROJECT		
Title	WELLINGTON WATER TREATMENT FACILITY SITE LAYOUT		
Original Size	A1	Drawing No:	61-37428-SK007
Rev:	1		











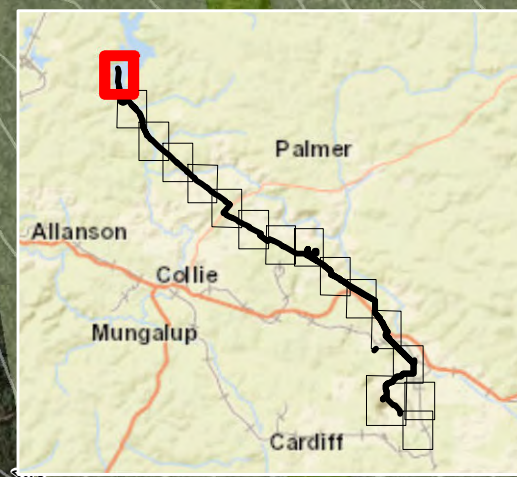
LEGEND

- Potential Habitat Trees
- Rare Fauna sites (Refer GHD Report Feb 2017)
- Rare Flora sites (Refer GHD Report Feb 2017)
- Rare Fauna sites (Refer Strategen Report 2018)
- Rare Flora sites (Refer Strategen Report 2018)
- Contours
- Brine Water Pipeline
- Return Water Pipeline
- Ground Water Pipeline
- River Water Pipeline
- Surface Water Pipeline
- Treated Water Pipeline
- Existing ground water pipeline
- Cadastre
- Heritage sites intersecting with pipe corridor
- Pipeline Corridor No. 1 (Package 1)
- Pipeline Corridor No. 2 (Package 2)
- Temporary Works Areas
- Permanent Works Areas
- Vegetation equivalent area within pipe corridor to be retained (exact location may vary)

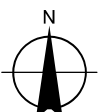
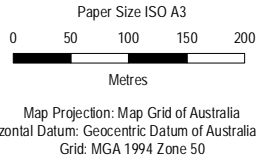
Vegetation type

- VT1
- VT2
- VT3
- VT4
- Cleared
- Parkland Cleared
- Minesite Rehabilitation
- Plantation

Note1: Pipeline alignments shown are indicative only and must be adjusted within the pipeline corridor during detailed design.
Note2: All co-ordinates to MGA 1994 Zone 50. The co-ordinates shown in this drawing are rounded to the nearest metre and are approximately only.
Note3: The aerial photography shown on this drawing is indicative only and cannot be relied upon.

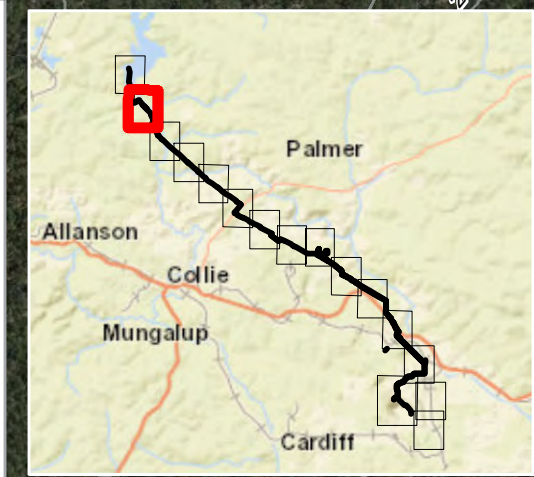
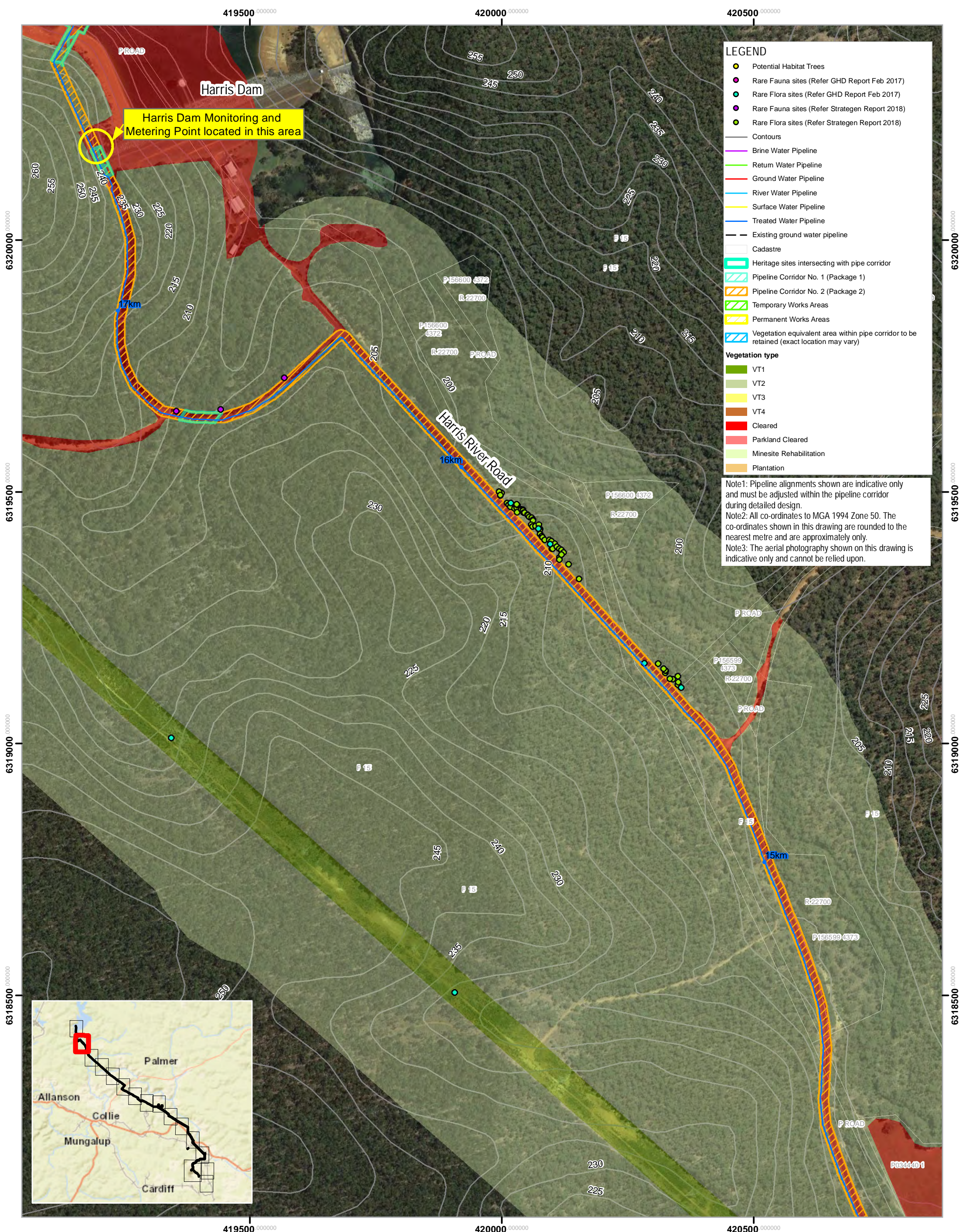


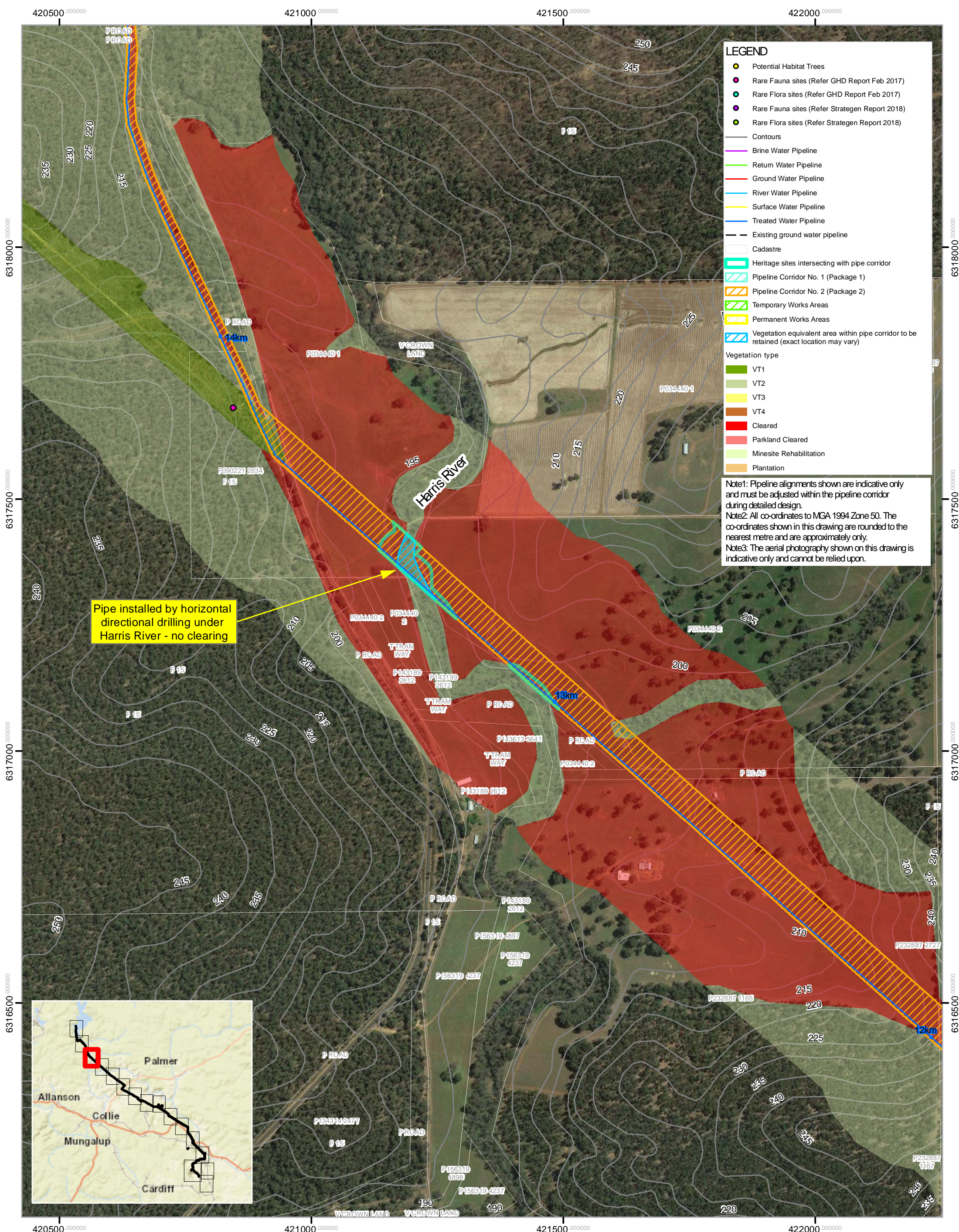
DRAFT



Myalup Wellington
Water for Food Project
Land Constraints and Locations Plan

Project No. 61-37428
Revision No. Draft 5
Date 19/12/2018
6137428-SK8.01





LEGEND

Potential Habitat Trees

Rare Fauna sites (Refer GHD Report Feb 2017)

Rare Flora sites (Refer GHD Report Feb 2017)

Rare Fauna sites (Refer Strategen Report 2018)

Rare Flora sites (Refer Strategen Report 2018)

Contours

Brine Water Pipeline

Return Water Pipeline

Ground Water Pipeline

River Water Pipeline

Surface Water Pipeline

Treated Water Pipeline

Existing ground water pipeline

Cadastre

Heritage sites intersecting with pipe corridor

Pipeline Corridor No. 1 (Package 1)

Pipeline Corridor No. 2 (Package 2)

Temporary Works Areas

Permanent Works Areas

Vegetation equivalent area within pipe corridor to be retained (exact location may vary)

Vegetation type

VT1

VT2

VT3

VT4

Cleared

Parkland Cleared

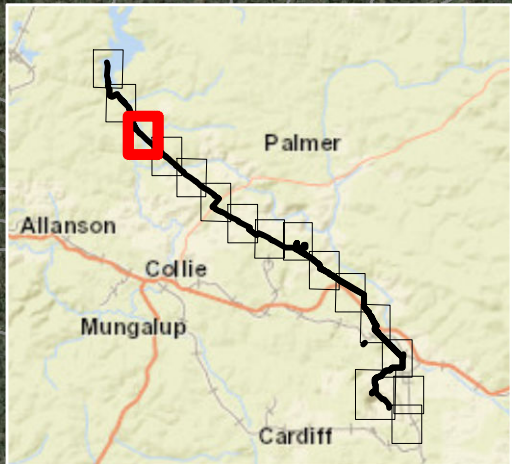
Minesite Rehabilitation

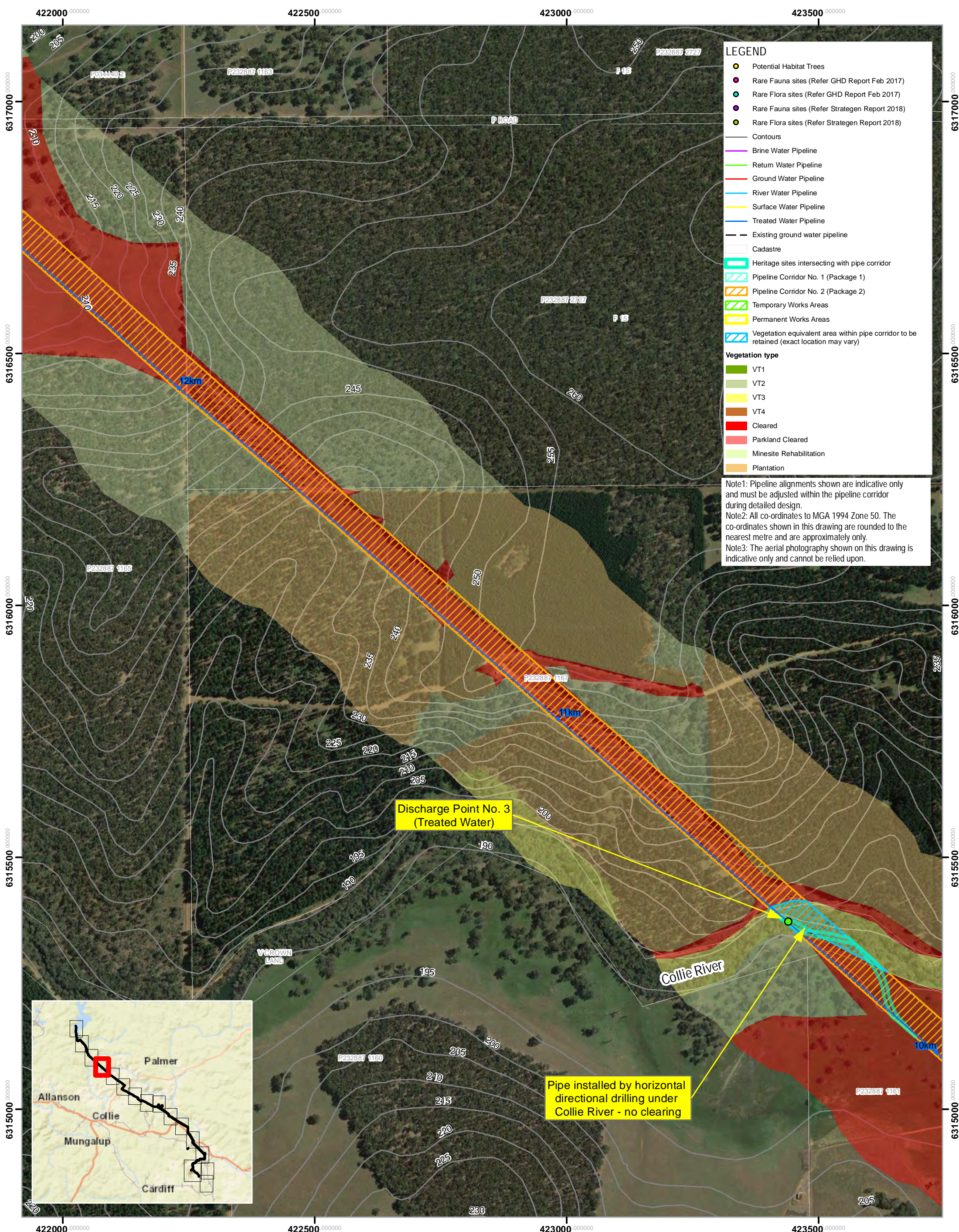
Plantation

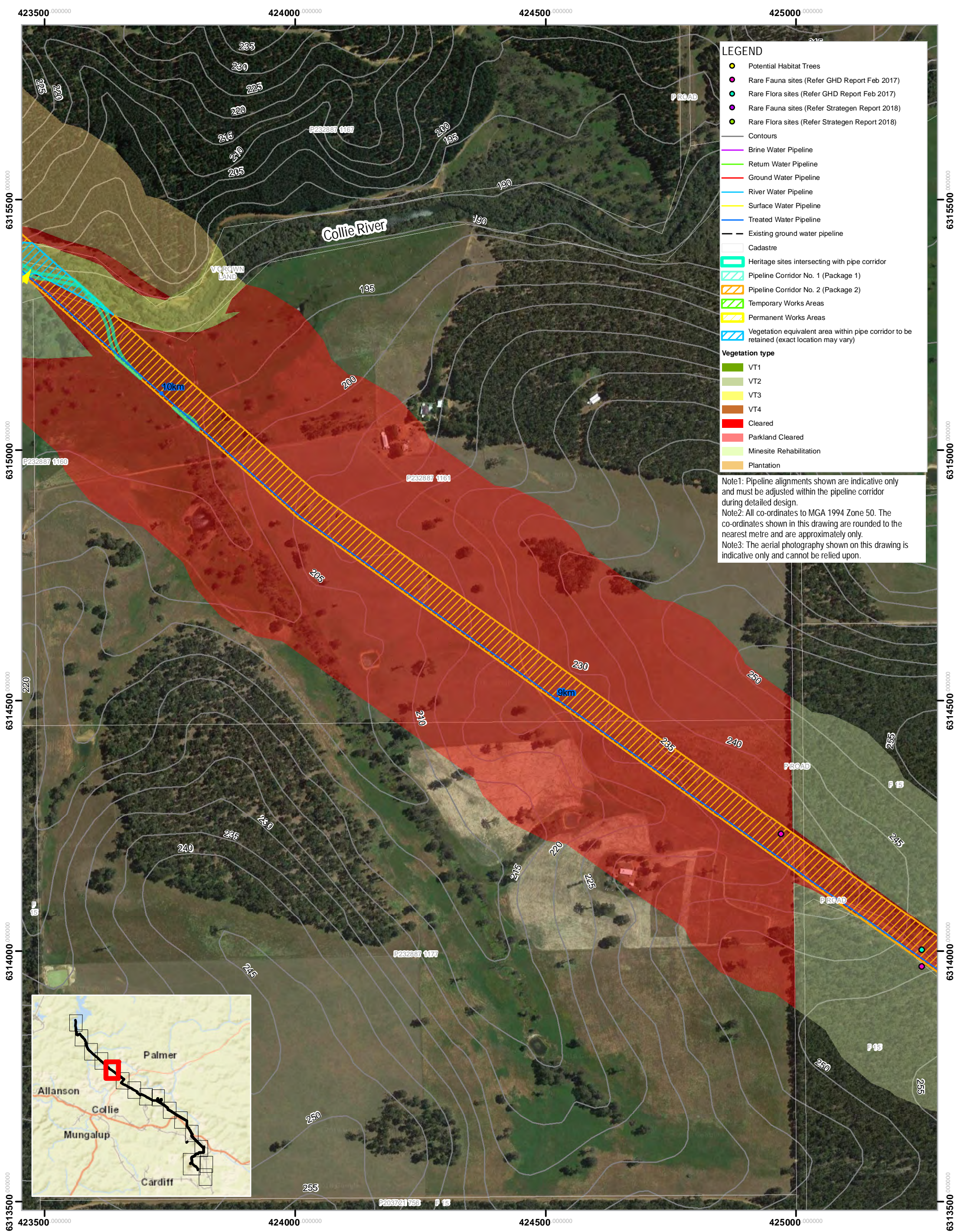
Note1: Pipeline alignments shown are indicative only and must be adjusted within the pipeline corridor during detailed design.

Note2: All co-ordinates to MGA 1994 Zone 50. The co-ordinates shown in this drawing are rounded to the nearest metre and are approximately only.

Note3: The aerial photography shown on this drawing is indicative only and cannot be relied upon.







LEGEND

- Potential Habitat Trees
- Rare Fauna sites (Refer GHD Report Feb 2017)
- Rare Flora sites (Refer GHD Report Feb 2017)
- Rare Fauna sites (Refer Strategen Report 2018)
- Rare Flora sites (Refer Strategen Report 2018)
- Contours
- Brine Water Pipeline
- Return Water Pipeline
- Ground Water Pipeline
- River Water Pipeline
- Surface Water Pipeline
- Treated Water Pipeline
- Existing ground water pipeline
- Cadastre
- Heritage sites intersecting with pipe corridor
- Pipeline Corridor No. 1 (Package 1)
- Pipeline Corridor No. 2 (Package 2)
- Temporary Works Areas
- Permanent Works Areas
- Vegetation equivalent area within pipe corridor to be retained (exact location may vary)

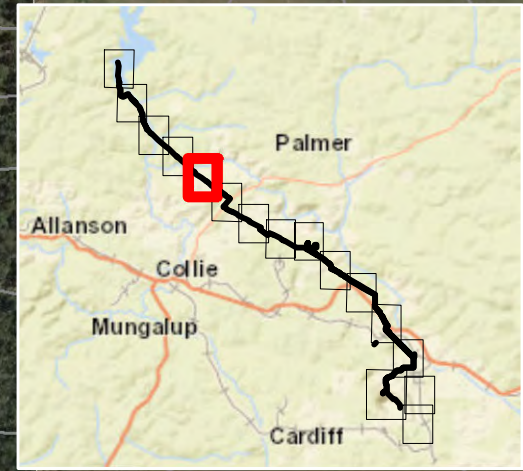
Vegetation type

- VT1
- VT2
- VT3
- VT4
- Cleared
- Parkland Cleared
- Minesite Rehabilitation
- Plantation

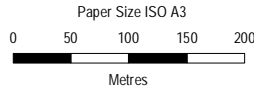
Note1: Pipeline alignments shown are indicative only and must be adjusted within the pipeline corridor during detailed design.

Note2: All co-ordinates to MGA 1994 Zone 50. The co-ordinates shown in this drawing are rounded to the nearest metre and are approximately only.

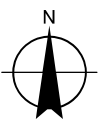
Note3: The aerial photography shown on this drawing is indicative only and cannot be relied upon.



DRAFT



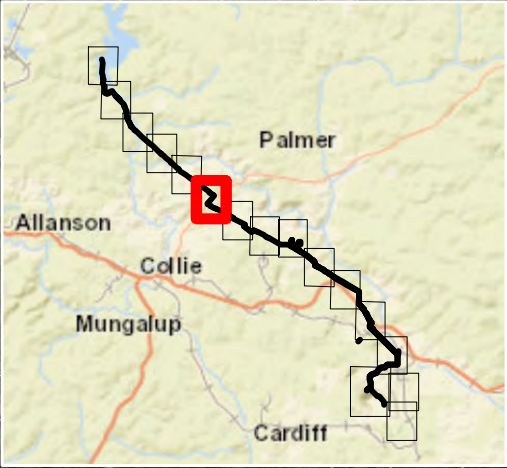
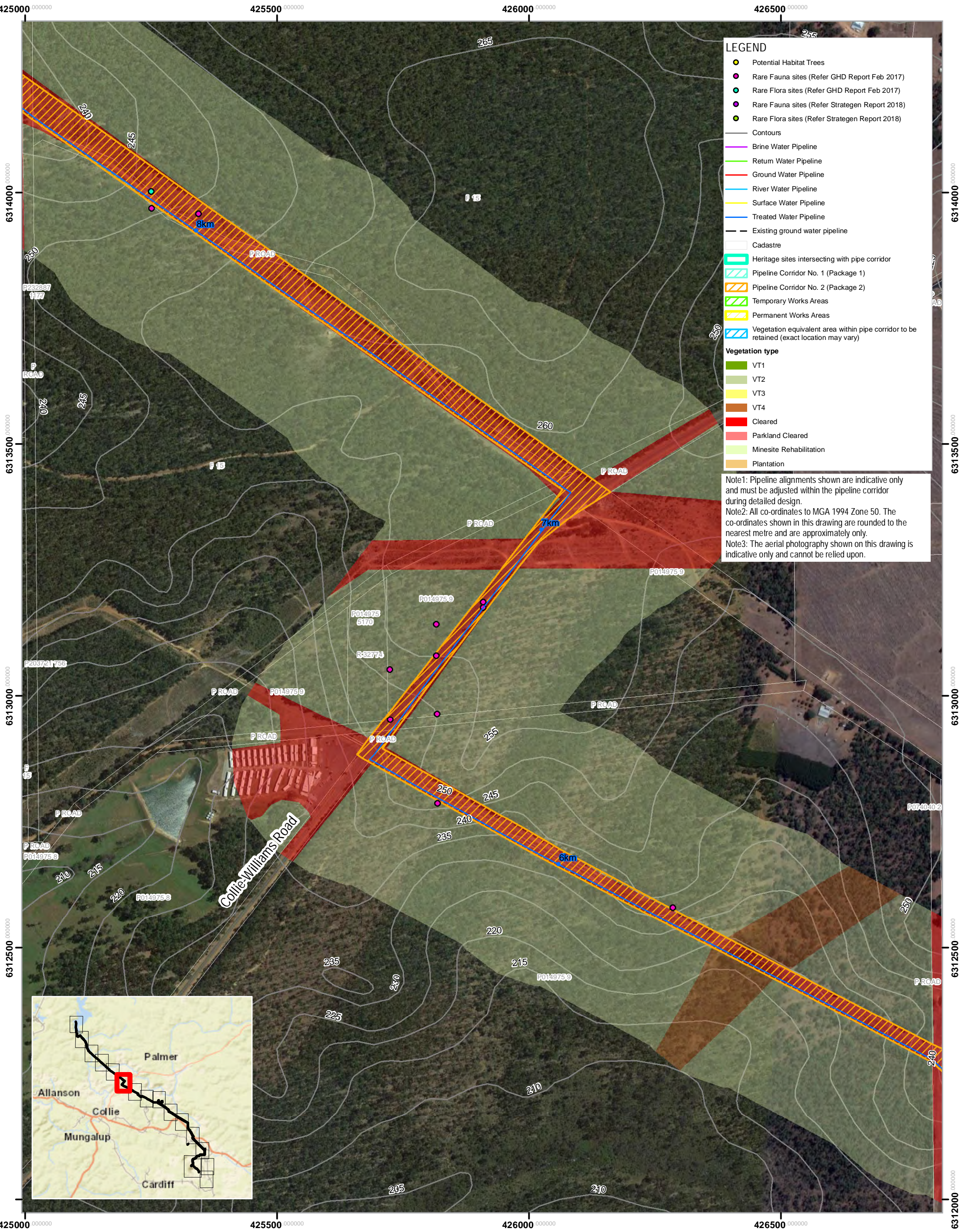
Map Projection: Map Grid of Australia
Horizontal Datum: Geocentric Datum of Australia 1994
Grid: MGA 1994 Zone 50



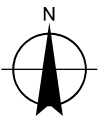
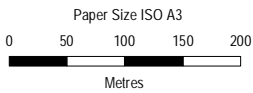
Myalup Wellington
Water for Food Project
Land Constraints and Locations Plan

Project No. 61-37428
Revision No. Draft 5
Date 19/12/2018

6137428-SK8.05



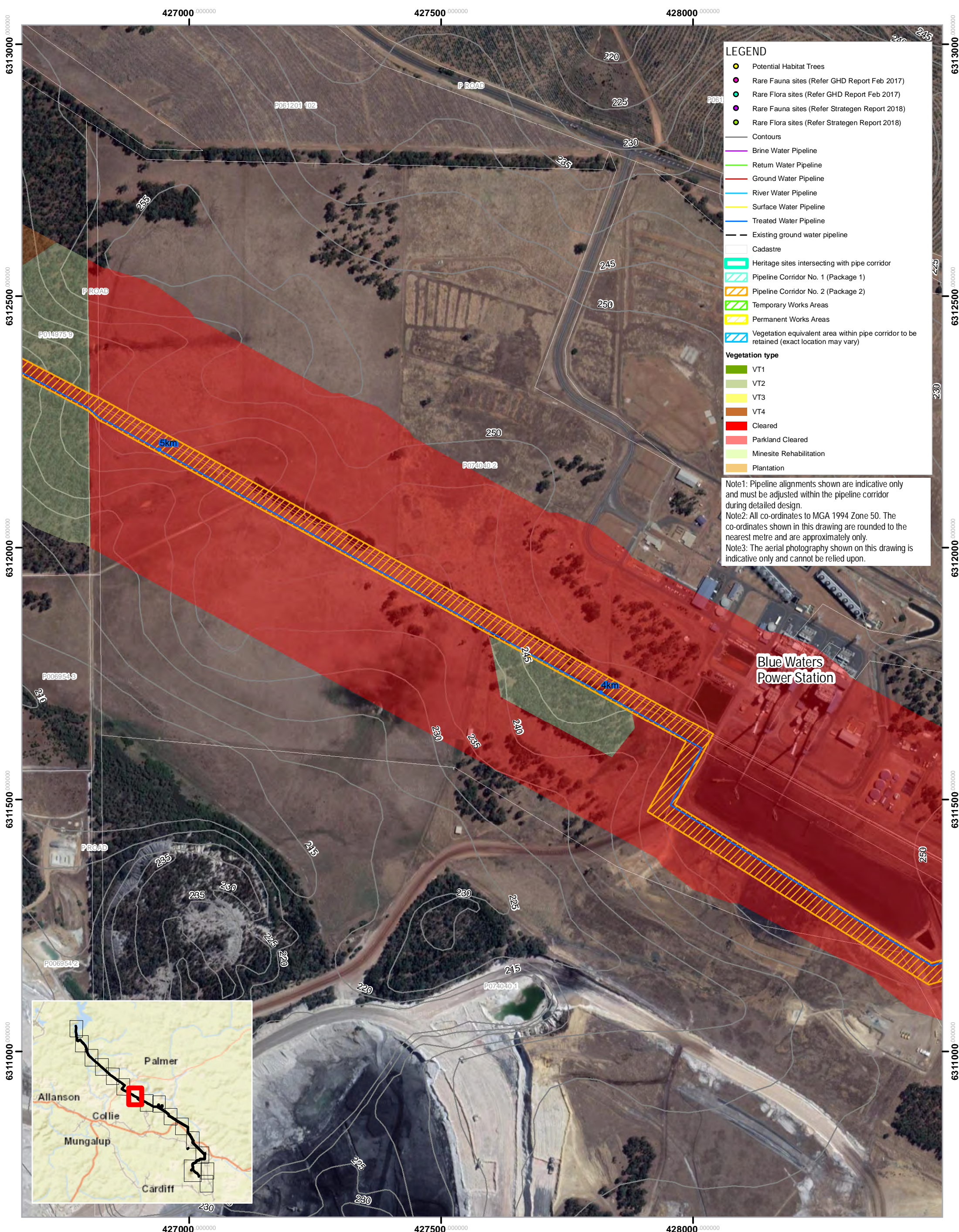
DRAFT



Myalup Wellington
Water for Food Project
Land Constraints and Locations Plan

Project No. 61-37428
Revision No. Draft 5
Date 19/12/2018

6137428-SK8.06



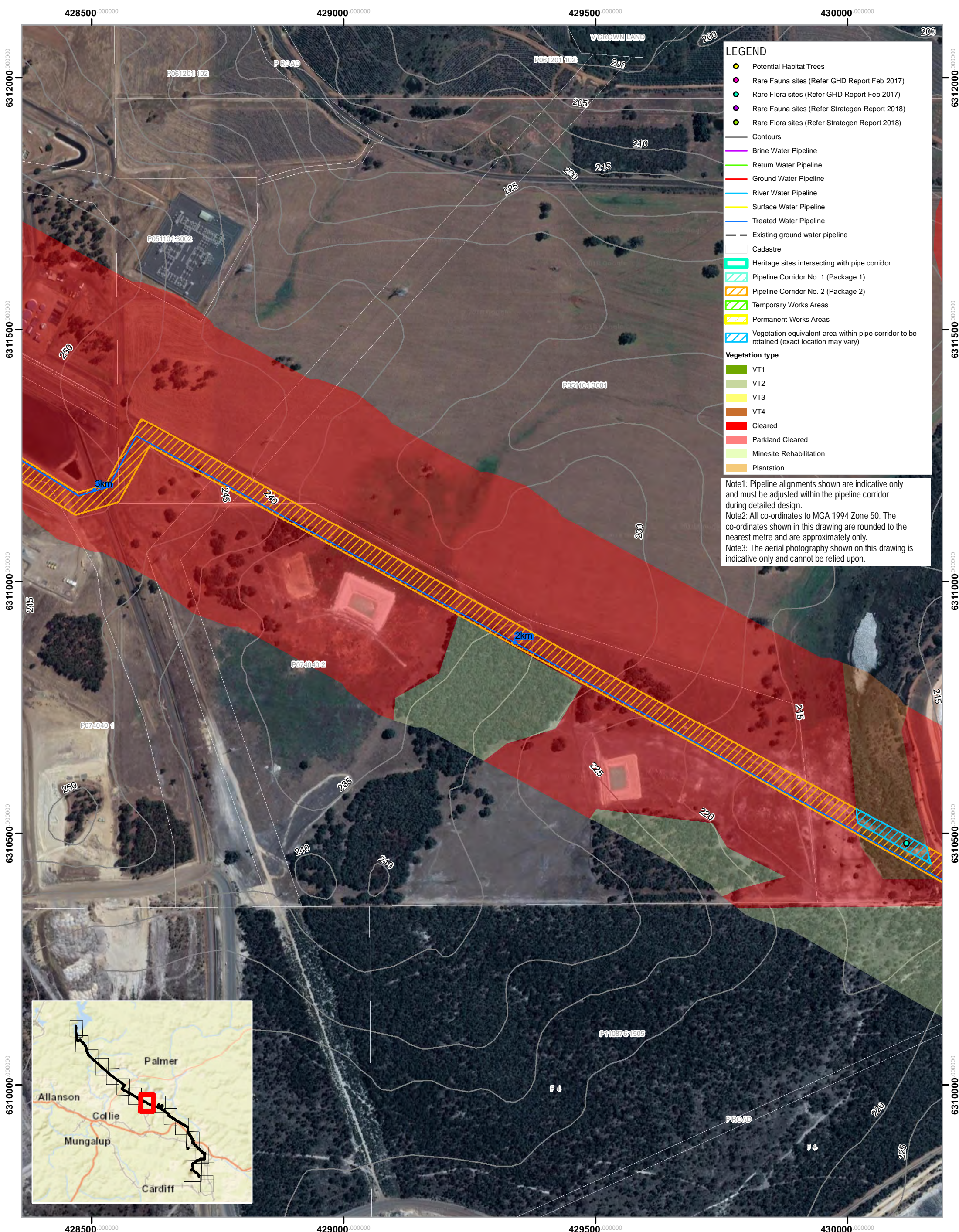
LEGEND

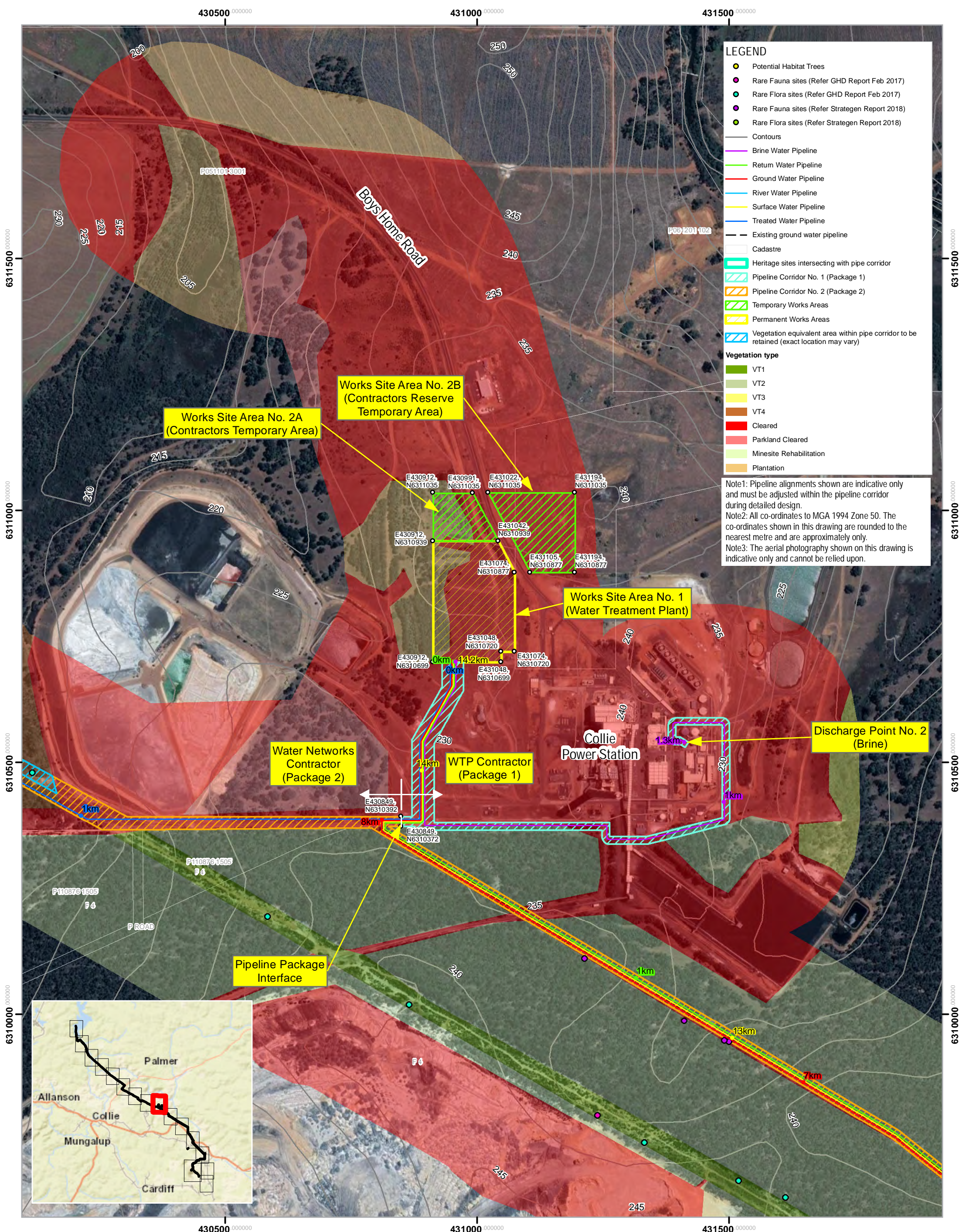
- Potential Habitat Trees
- Rare Fauna sites (Refer GHD Report Feb 2017)
- Rare Flora sites (Refer GHD Report Feb 2017)
- Rare Fauna sites (Refer Strategen Report 2018)
- Rare Flora sites (Refer Strategen Report 2018)
- Contours
- Brine Water Pipeline
- Return Water Pipeline
- Ground Water Pipeline
- River Water Pipeline
- Surface Water Pipeline
- Treated Water Pipeline
- Existing ground water pipeline
- Cadastre
- Heritage sites intersecting with pipe corridor
- Pipeline Corridor No. 1 (Package 1)
- Pipeline Corridor No. 2 (Package 2)
- Temporary Works Areas
- Permanent Works Areas
- Vegetation equivalent area within pipe corridor to be retained (exact location may vary)

Vegetation type

- VT1
- VT2
- VT3
- VT4
- Cleared
- Parkland Cleared
- Minesite Rehabilitation
- Plantation

Note1: Pipeline alignments shown are indicative only and must be adjusted within the pipeline corridor during detailed design.
Note2: All co-ordinates to MGA 1994 Zone 50. The co-ordinates shown in this drawing are rounded to the nearest metre and are approximately only.
Note3: The aerial photography shown on this drawing is indicative only and cannot be relied upon.





LEGEND

Potential Habitat Trees

Rare Fauna sites (Refer GHD Report Feb 2017)

Rare Flora sites (Refer GHD Report Feb 2017)

Rare Fauna sites (Refer Strategen Report 2018)

Rare Flora sites (Refer Strategen Report 2018)

Contours

Brine Water Pipeline

Return Water Pipeline

Ground Water Pipeline

River Water Pipeline

Surface Water Pipeline

Treated Water Pipeline

Existing ground water pipeline

Cadastre

Heritage sites intersecting with pipe corridor

Pipeline Corridor No. 1 (Package 1)

Pipeline Corridor No. 2 (Package 2)

Temporary Works Areas

Permanent Works Areas

Vegetation equivalent area within pipe corridor to be retained (exact location may vary)

Vegetation type

VT1

VT2

VT3

VT4

Cleared

Parkland Cleared

Minesite Rehabilitation

Plantation

Note1: Pipeline alignments shown are indicative only and must be adjusted within the pipeline corridor during detailed design.

Note2: All co-ordinates to MGA 1994 Zone 50. The co-ordinates shown in this drawing are rounded to the nearest metre and are approximately only.

Note3: The aerial photography shown on this drawing is indicative only and cannot be relied upon.

DRAFT

Map Projection: Map Grid of Australia
Horizontal Datum: Geocentric Datum of Australia 1994
Grid: MGA 1994 Zone 50

Myalup Wellington
Water for Food Project
Land Constraints and Locations Plan

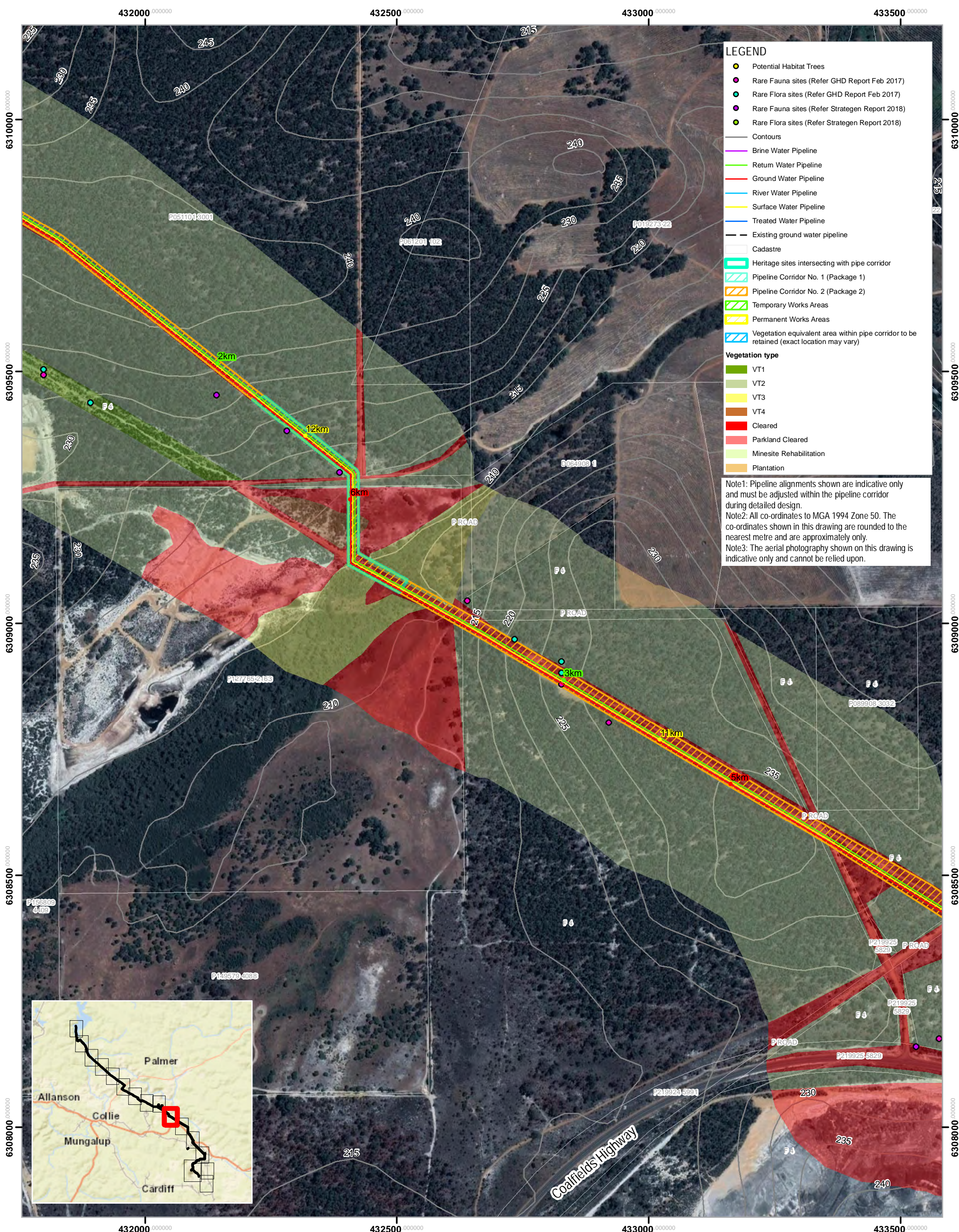
Project No. 61-37428
Revision No. Draft 5
Date 19/12/2018

6137428-SK8.09

G:\6137428\GIS\Map\Working\6137428_SK8_00_Land constraints plan_Draft5.mxd
Print date: 19 Dec 2018 - 10:45

Service Layer Credits: Sources: Esri, HERE, Garmin, USGS, Intermap, INCREMENT P, NRCan, Esri Japan, METI, Esri China (Hong Kong), Esri Korea, Esri (Thailand), NGCC, © OpenStreetMap contributors, and the GIS User Community

Created by: swoods



LEGEND

Potential Habitat Trees

Rare Fauna sites (Refer GHD Report Feb 2017)

Rare Flora sites (Refer GHD Report Feb 2017)

Rare Fauna sites (Refer Strategen Report 2018)

Rare Flora sites (Refer Strategen Report 2018)

Contours

Brine Water Pipeline

Return Water Pipeline

Ground Water Pipeline

River Water Pipeline

Surface Water Pipeline

Treated Water Pipeline

Existing ground water pipeline

Cadastral

Heritage sites intersecting with pipe corridor

Pipeline Corridor No. 1 (Package 1)

Pipeline Corridor No. 2 (Package 2)

Temporary Works Areas

Permanent Works Areas

Vegetation equivalent area within pipe corridor to be retained (exact location may vary)

Vegetation type

VT1

VT2

VT3

VT4

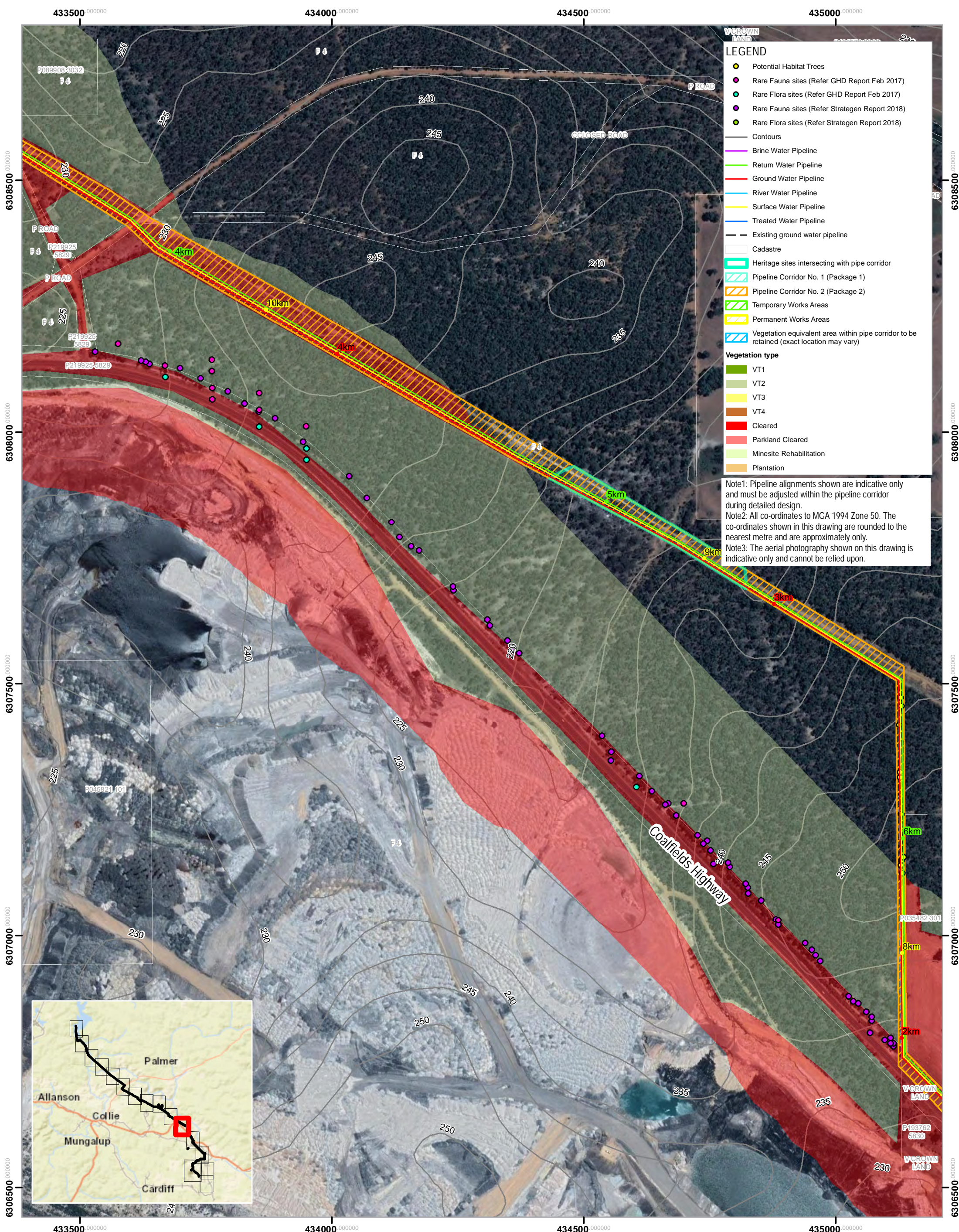
Cleared

Parkland Cleared

Minesite Rehabilitation

Plantation

Note1: Pipeline alignments shown are indicative only and must be adjusted within the pipeline corridor during detailed design.
Note2: All co-ordinates to MGA 1994 Zone 50. The co-ordinates shown in this drawing are rounded to the nearest metre and are approximately only.
Note3: The aerial photography shown on this drawing is indicative only and cannot be relied upon.



LEGEND

- Potential Habitat Trees
- Rare Fauna sites (Refer GHD Report Feb 2017)
- Rare Flora sites (Refer GHD Report Feb 2017)
- Rare Fauna sites (Refer Strategen Report 2018)
- Rare Flora sites (Refer Strategen Report 2018)
- Contours
- Brine Water Pipeline
- Return Water Pipeline
- Ground Water Pipeline
- River Water Pipeline
- Surface Water Pipeline
- Treated Water Pipeline
- Existing ground water pipeline
- Cadastre
- Heritage sites intersecting with pipe corridor
- Pipeline Corridor No. 1 (Package 1)
- Pipeline Corridor No. 2 (Package 2)
- Temporary Works Areas
- Permanent Works Areas
- Vegetation equivalent area within pipe corridor to be retained (exact location may vary)

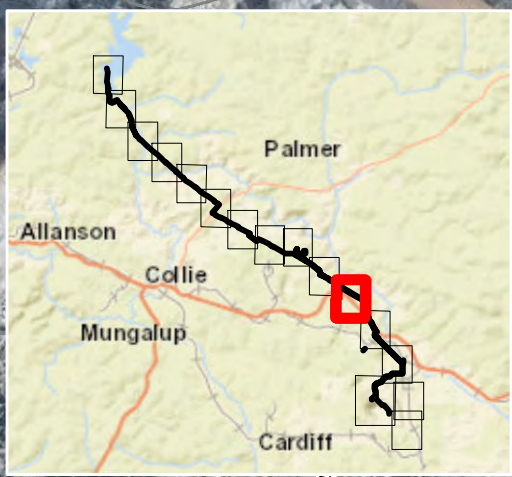
Vegetation type

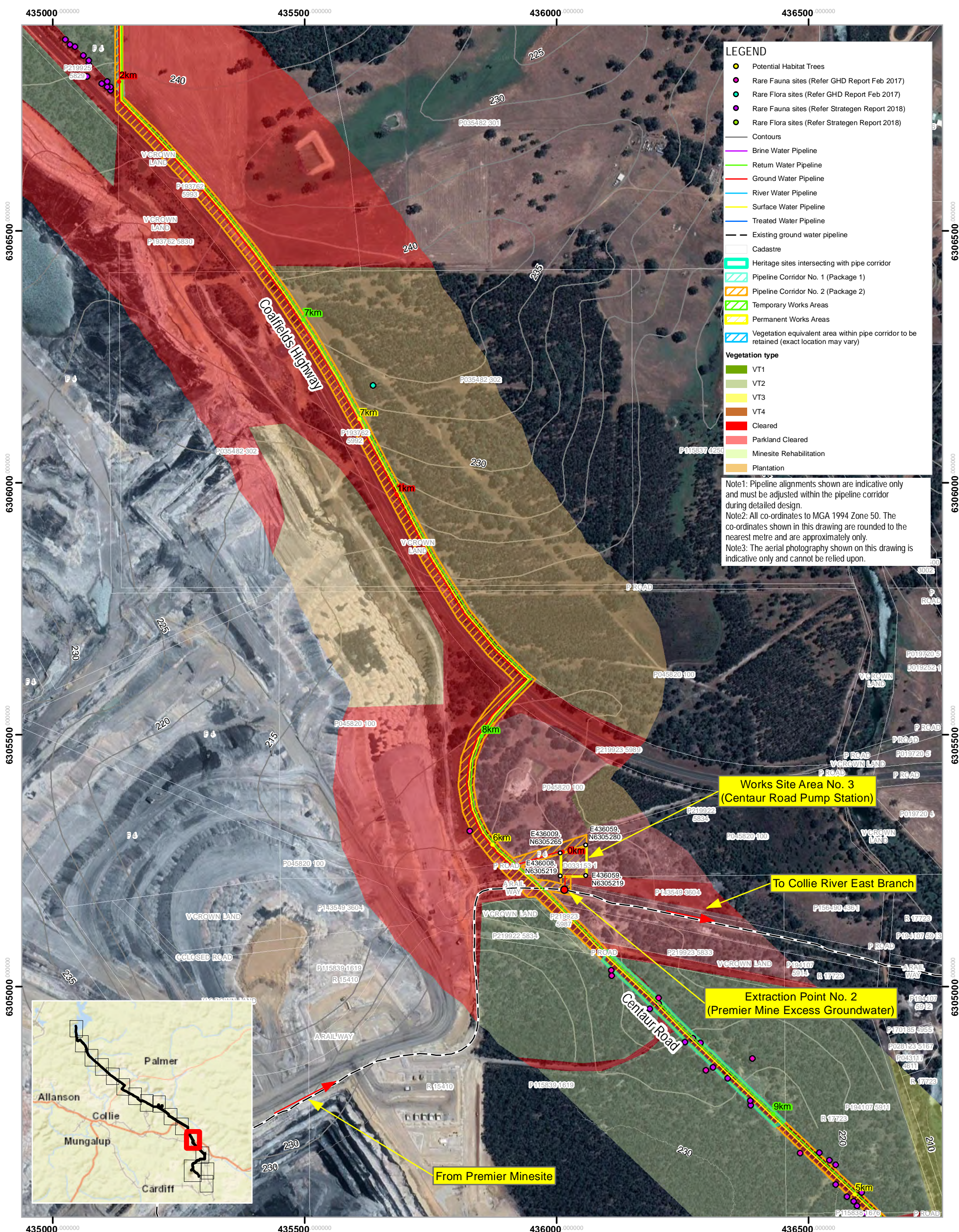
- VT1
- VT2
- VT3
- VT4
- Cleared
- Parkland Cleared
- Minesite Rehabilitation
- Plantation

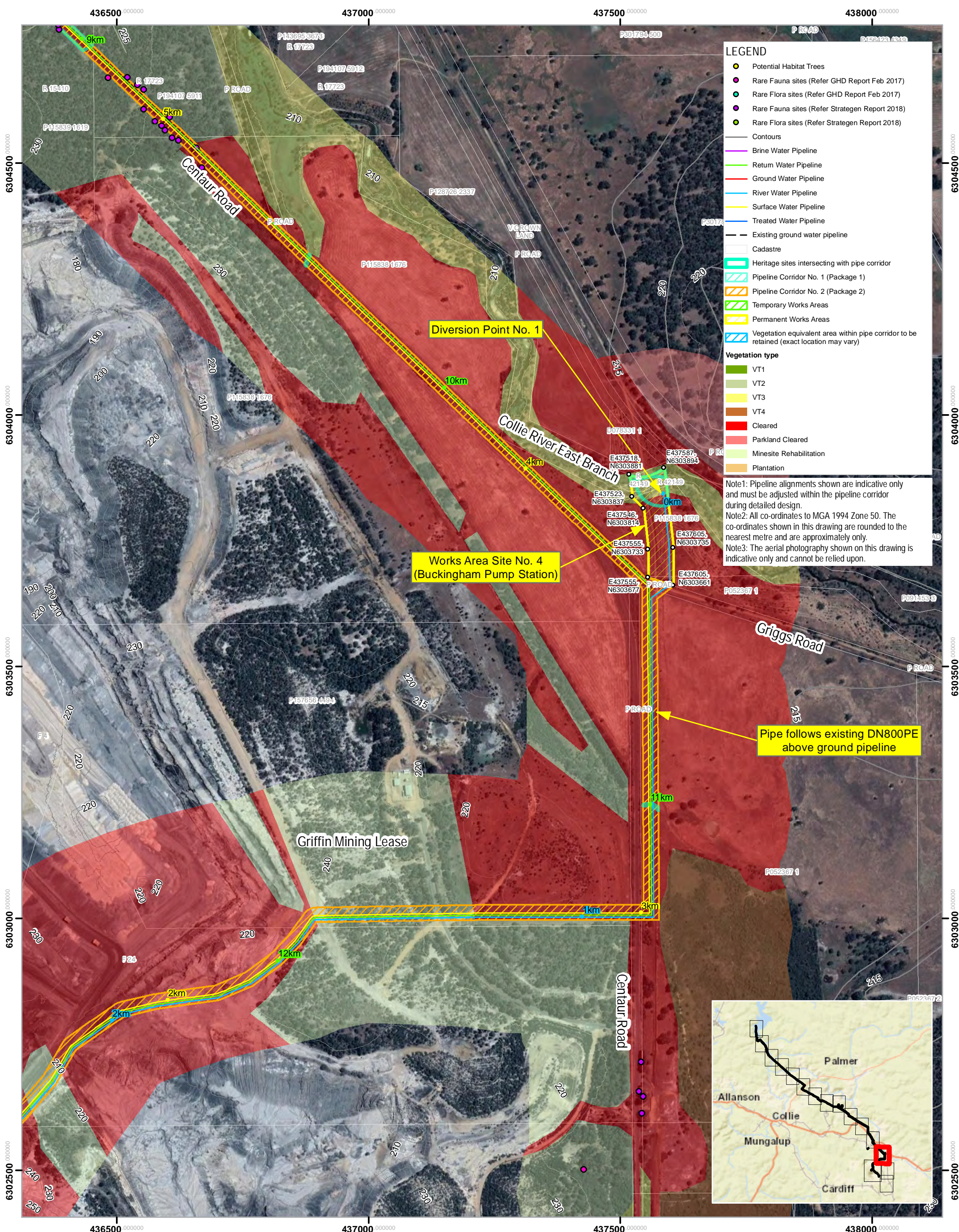
Note1: Pipeline alignments shown are indicative only and must be adjusted within the pipeline corridor during detailed design.

Note2: All co-ordinates to MGA 1994 Zone 50. The co-ordinates shown in this drawing are rounded to the nearest metre and are approximately only.

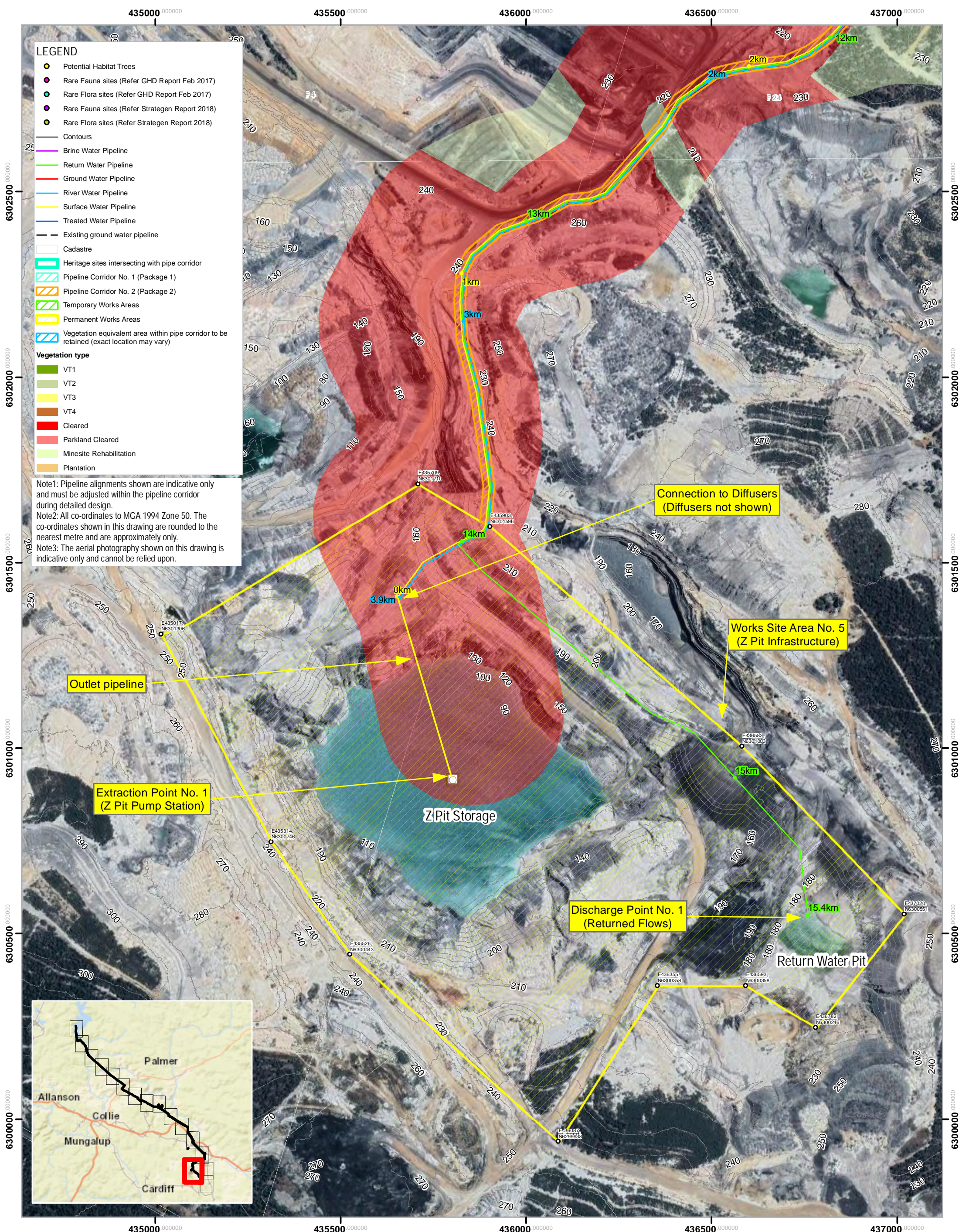
Note3: The aerial photography shown on this drawing is indicative only and cannot be relied upon.







Service Layer Credits: Sources: Esri, HERE, Garmin, USGS, Intermap, INCREMENT P, NRCan, Esri Japan, METI, Esri China (Hong Kong), Esri Korea, Esri (Thailand), NGCC, © OpenStreetMap contributors, and the GIS User Community



LEGEND

- Potential Habitat Trees
- Rare Fauna sites (Refer GHD Report Feb 2017)
- Rare Flora sites (Refer GHD Report Feb 2017)
- Rare Fauna sites (Refer Strategen Report 2018)
- Rare Flora sites (Refer Strategen Report 2018)
- Contours
- Brine Water Pipeline
- Return Water Pipeline
- Ground Water Pipeline
- River Water Pipeline
- Surface Water Pipeline
- Treated Water Pipeline
- Existing ground water pipeline
- Cadastre
- Heritage sites intersecting with pipe corridor
- Pipeline Corridor No. 1 (Package 1)
- Pipeline Corridor No. 2 (Package 2)
- Temporary Works Areas
- Permanent Works Areas
- Vegetation equivalent area within pipe corridor to be retained (exact location may vary)

Vegetation type

- VT1
- VT2
- VT3
- VT4
- Cleared
- Parkland Cleared
- Minesite Rehabilitation
- Plantation

Note1: Pipeline alignments shown are indicative only and must be adjusted within the pipeline corridor during detailed design.
Note2: All co-ordinates to MGA 1994 Zone 50. The co-ordinates shown in this drawing are rounded to the nearest metre and are approximately only.
Note3: The aerial photography shown on this drawing is indicative only and cannot be relied upon.

