














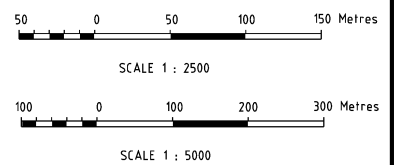


GENERAL NOTES

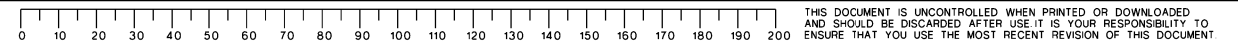
1. ALL LEVELS ARE METRIC AND TO AUSTRALIAN HEIGHT DATUM (AHD). HORIZONTAL GEODETIC DATUM TO YANDI MINE GRID

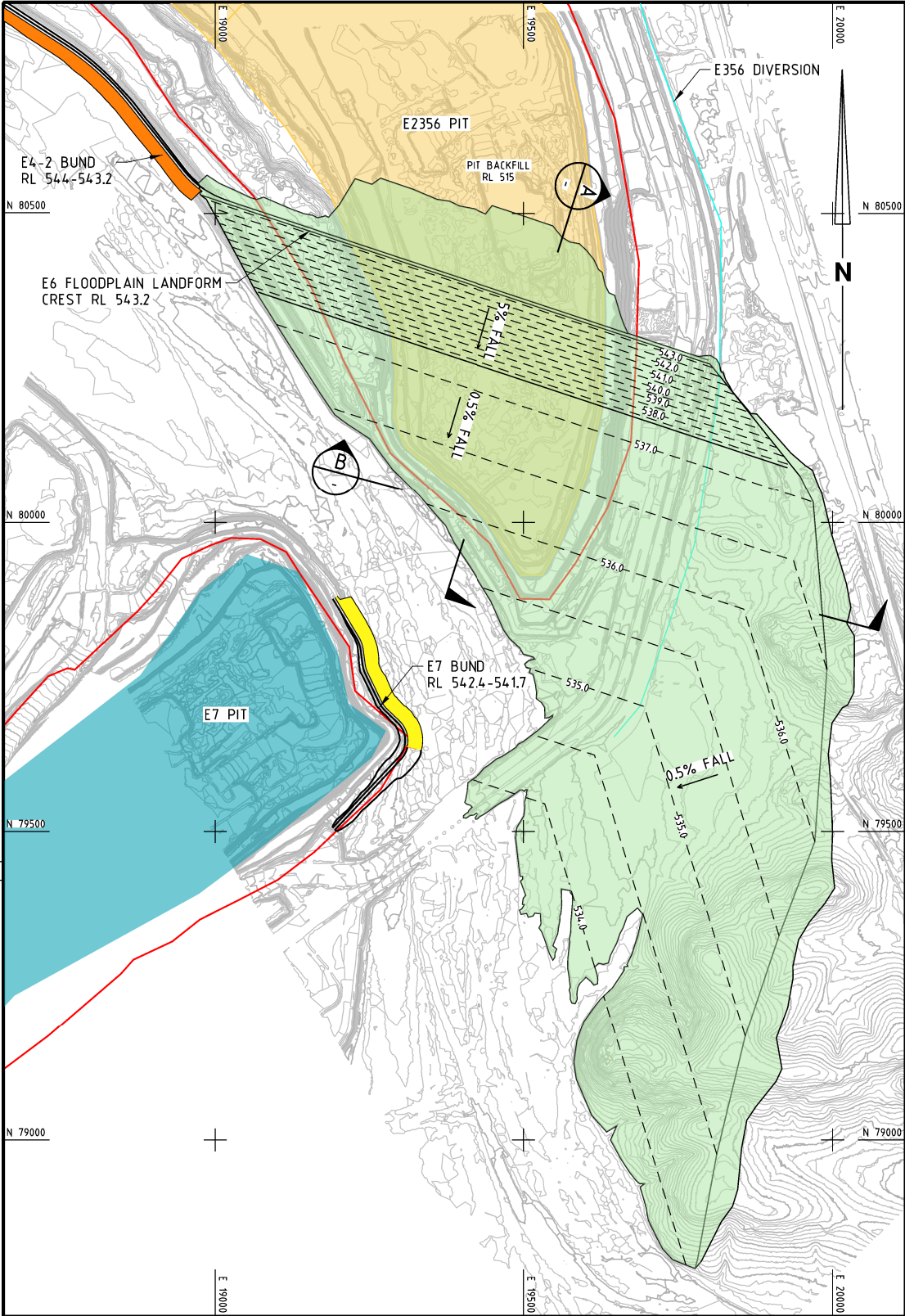
LEGEND

-  FLOOD CHANNEL
 FLOOD PROTECTION BUNDS
 DIVERSION DRAINS
 FACING CLASS ROCK PROTECTION
 LIGHT CLASS ROCK PROTECTION
 1/4 TONNE ROCK PROTECTION
 1/2 TONNE ROCK PROTECTION
 1.0 TONNE ROCK PROTECTION
 2.0 TONNE ROCK PROTECTION
 4.0 TONNE ROCK PROTECTION
 FLOODPLAIN LANDFORM
 PIT BACKFILL
 PIT LAKE
 TENEMENT BOUNDARY
 MINE PIT BOUNDARY

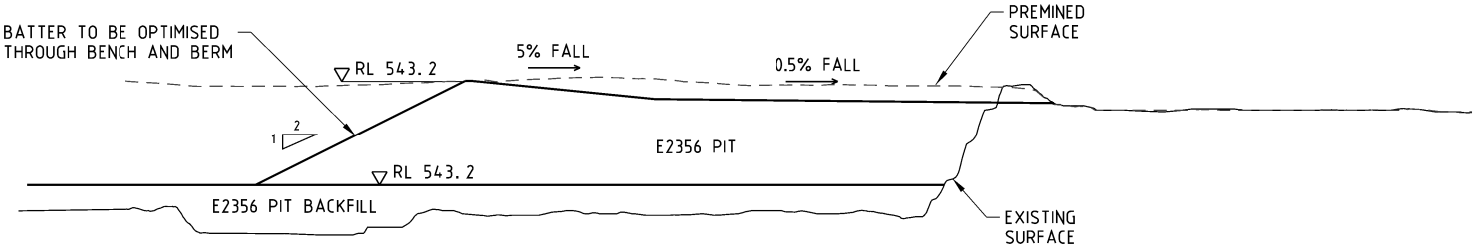
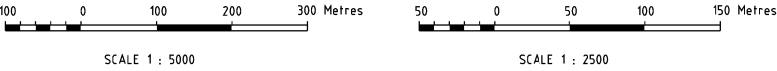


SURFACE WATER STRUCTURES GENERAL ARRANGEMENT - SHEET 2 OF 4	1200-C-15994
SURFACE WATER STRUCTURES SITE PLAN	1200-C-15992
CONTRACT NUMBER OR PURCHASE ORDER NUMBER	FX.00.015586
REFERENCE DOCUMENTS	DOC NO

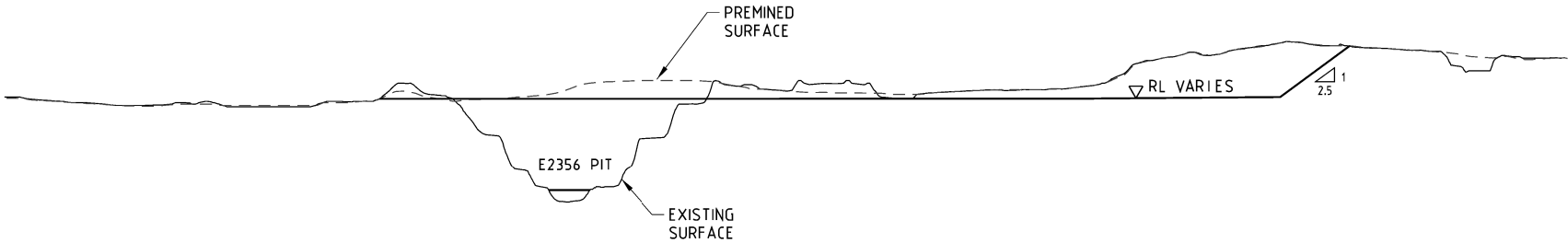
[illegible]



PLAN
SCALE 1:5000



SECTION A
SCALE 1:2500



SECTION B
SCALE 1:2500

GENERAL NOTES

1. ALL LEVELS ARE METRIC AND TO AUSTRALIAN HEIGHT DATUM (AHD). HORIZONTAL GEODETIC DATUM TO YANDI MINE GRID

LEGEND

FLOOD CHANNEL

FLOOD PROTECTION BUNDS

DIVERSION DRAINS

FACING CLASS ROCK PROTECTION

LIGHT CLASS ROCK PROTECTION

1/4 TONNE ROCK PROTECTION

1/2 TONNE ROCK PROTECTION

1.0 TONNE ROCK PROTECTION

2.0 TONNE ROCK PROTECTION

4.0 TONNE ROCK PROTECTION

FLOODPLAIN LANDFORM

PIT BACKFILL

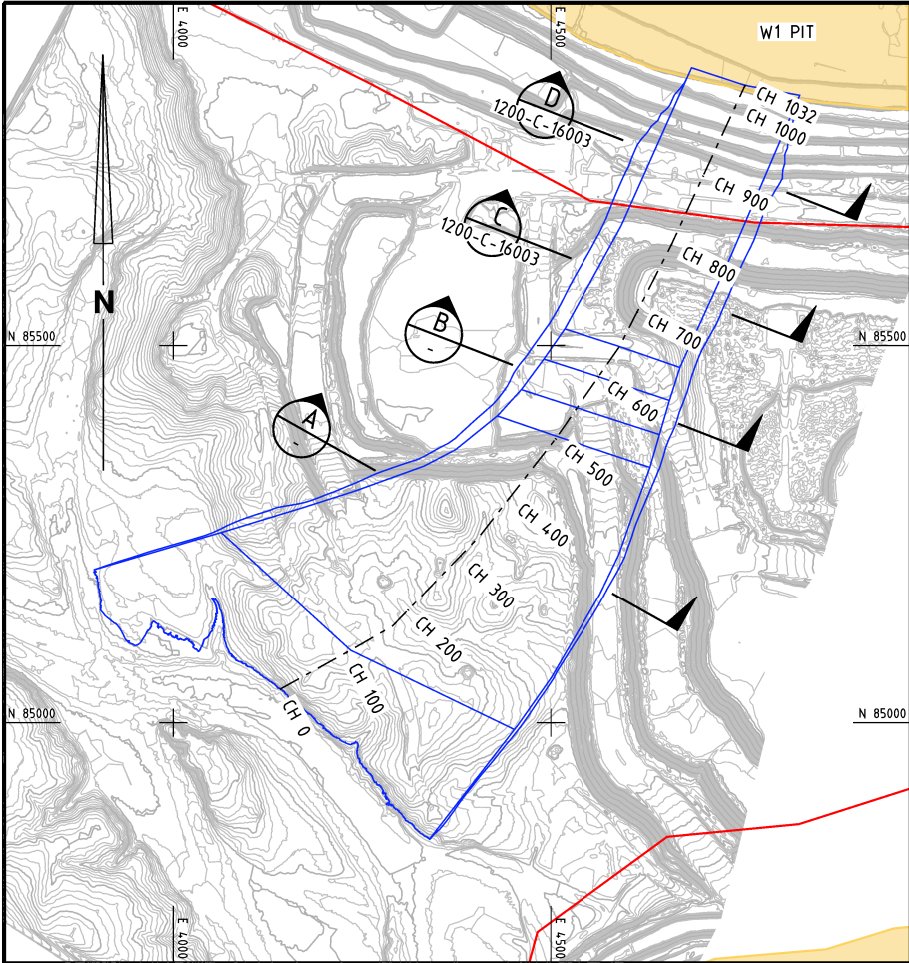
PIT LAKE

TENEMENT BOUNDARY

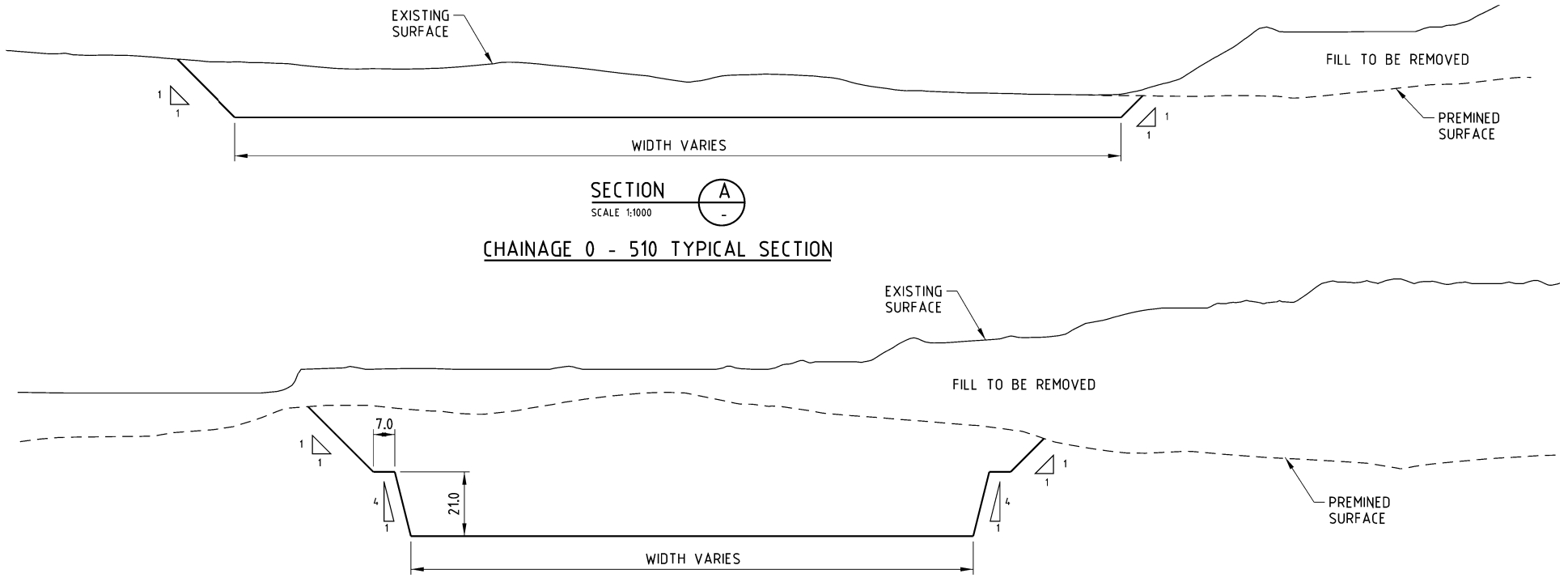
MINE PIT BOUNDARY

SURFACE WATER STRUCTURES GENERAL ARRANGEMENT - SHEET 4 OF 4	1200-C-15996
SURFACE WATER STRUCTURES SITE PLAN	1200-C-15992
CONTRACT NUMBER OR PURCHASE ORDER NUMBER	FX.00.0.15586
REFERENCE DOCUMENTS	DOC NO

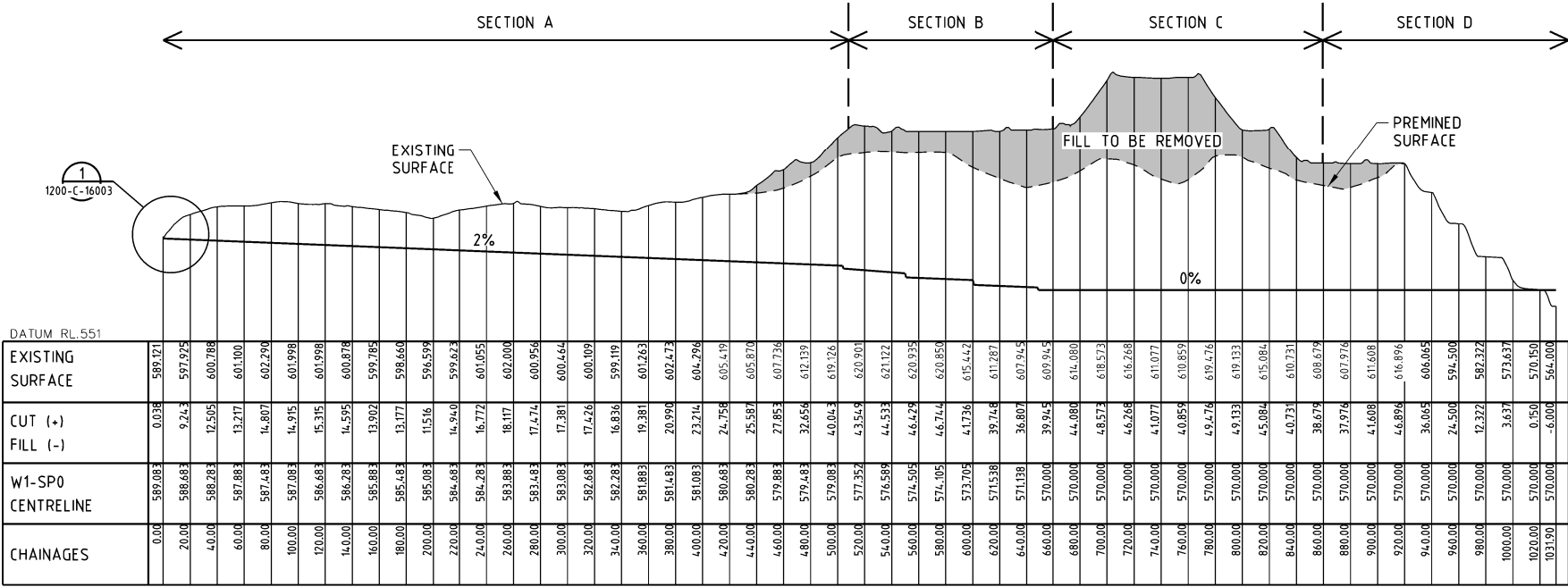
CONSTRUCTION AS-BUILT (RED INK)		COMMISSIONING AS-BUILT (BLUE INK)				BHPIO TO COMPLETE		BHPIO/REVIEWER TO COMPLETE		DESIGNER/CONTRACTOR TO COMPLETE		Worley		BHP Iron Ore Pty Ltd ABN 46 008 700 981		
COMPANY	SIGNATURE	COMPANY	SIGNATURE				DRAWING STATUS REVIEW	SIGNED	DATE	REV	COMPANY	BHP	COMPANY	WORLEY	STUDY PHASE WAO PROJECT - YANDI CLOSURE LANDFORM SURFACE WATER STRUCTURES E6 FLOODPLAIN LANDFORM	
NAME	PROJECT CODE	NAME	PROJECT CODE				INFORMATION ONLY				SIGNED		DESIGNED BY			
<input type="checkbox"/> DRAWING MARKED UP <input type="checkbox"/> NO CHANGE		<input type="checkbox"/> DRAWING MARKED UP <input type="checkbox"/> NO CHANGE					AS BUILT						DRAWN BY			
							CONSTRUCTION MAY PROCEED EXCEPT AS NOTED				THIS DRAWING HAS BEEN REVIEWED FOR GENERAL COMPLIANCE TO SCOPE AND COMPANY STANDARDS		CHECKED BY			
							REVISION	REVISION	REVISION	REVISION			DESIGN & HSEC APPROVED BY		SCALE AS SHOWN	A1 DRG. NO. 1200 - C - 16001 /B
							NO	DATE	REVISION COMMENT TO INCLUDE PROJECT CODE FOR ALL REVISIONS	NO	DATE	REVISION COMMENT TO INCLUDE PROJECT CODE FOR ALL REVISIONS				



PLAN
SCALE 1:5000

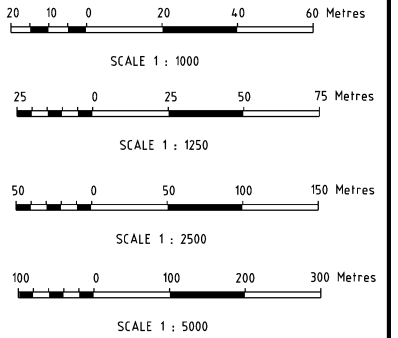


CHAINAGE 0 - 510 TYPICAL SECTION
CHAINAGE 510 - 660 TYPICAL SECTION



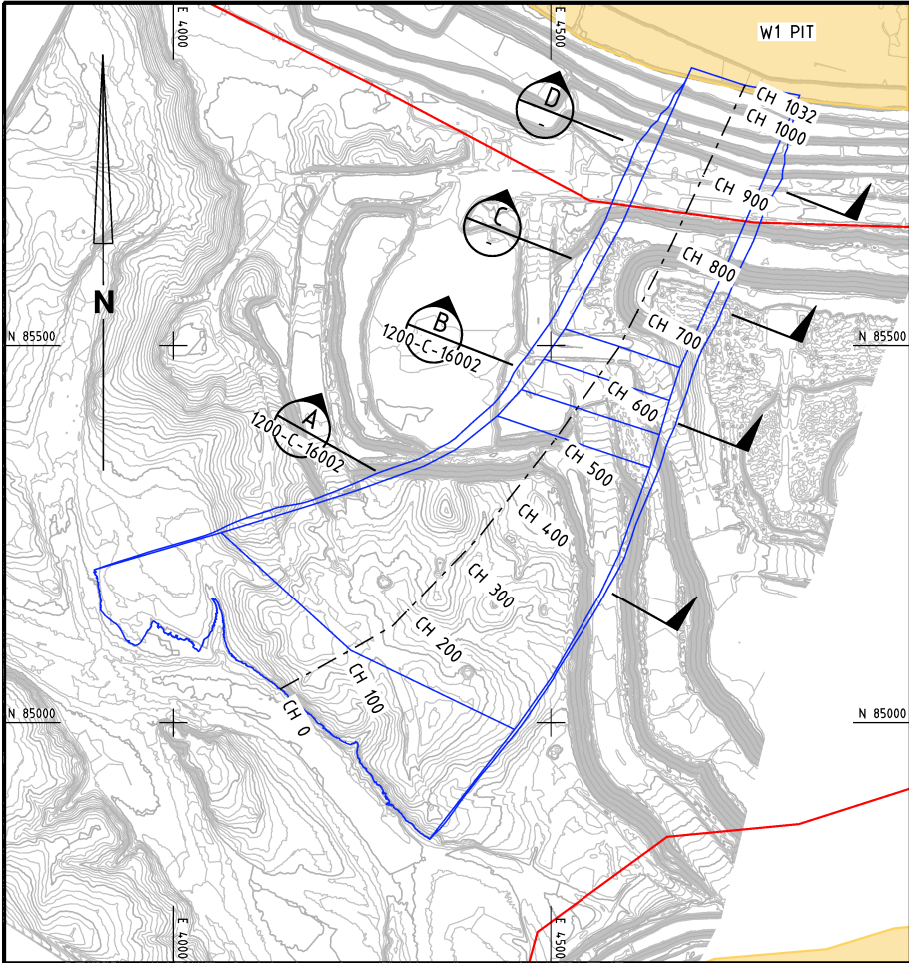
W1-SP0 FLOOD CHANNEL - LONG SECTION

HORIZONTAL SCALE 1:2500
VERTICAL SCALE 1:1250

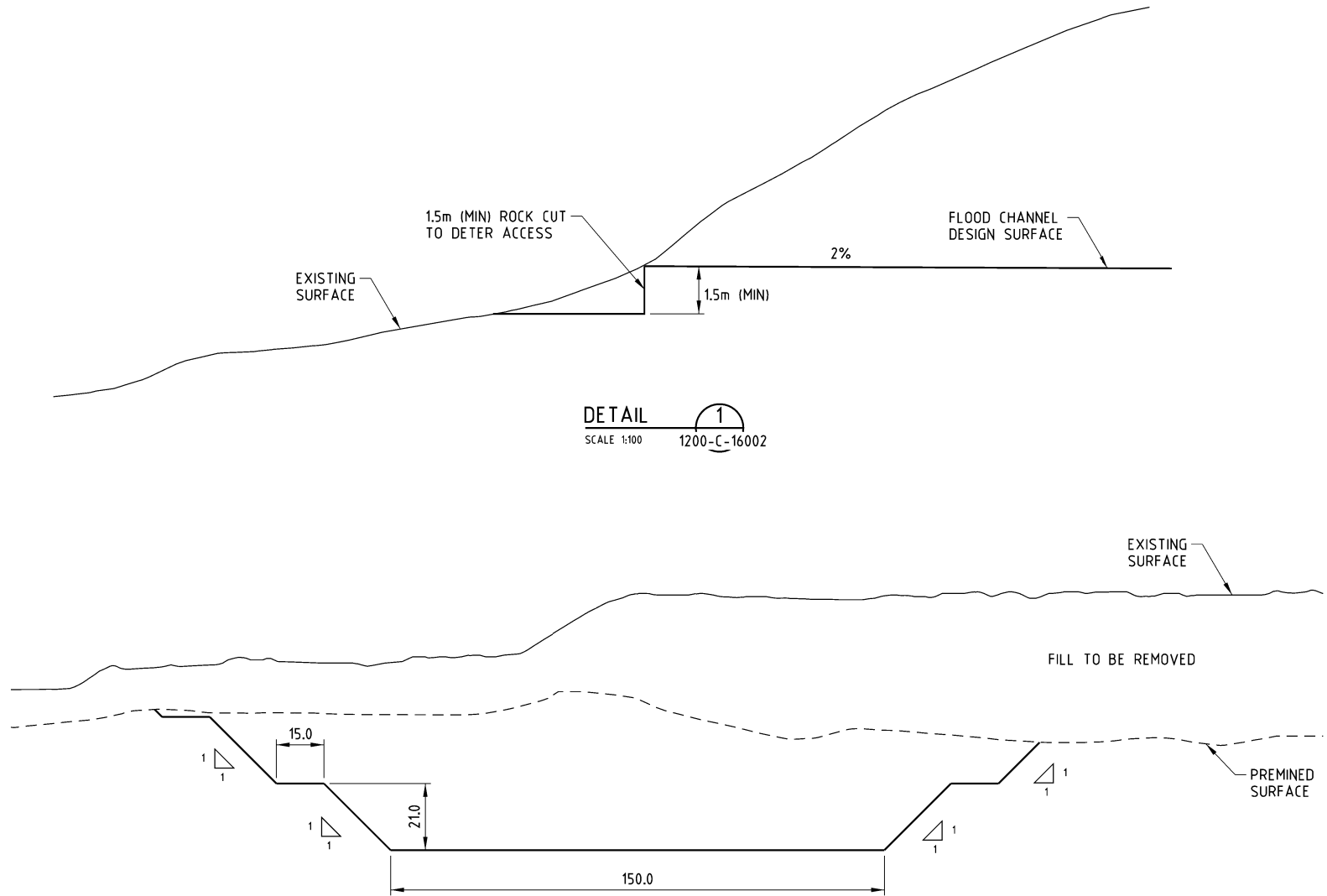


GENERAL NOTES	
1. ALL LEVELS ARE METRIC AND TO AUSTRALIAN HEIGHT DATUM (AHD), HORIZONTAL GEODETIC DATUM TO YANDI MINE GRID	
2. DIMENSIONS IN METRES UNLESS NOTED OTHERWISE	
LEGEND	
FLOOD CHANNEL FLOOD PROTECTION BUNDS DIVERSION DRAINS FLOODPLAIN LANDFORM PIT BACKFILL PIT LAKE TENEMENT BOUNDARY MINE PIT BOUNDARY	
SURFACE WATER STRUCTURES W1-SP0 FLOOD CHANNEL - SHEET 2 OF 2 SURFACE WATER STRUCTURES GENERAL ARRANGEMENT - SHEET 1 OF 4 SURFACE WATER STRUCTURES SITE PLAN	
CONTRACT NUMBER OR PURCHASE ORDER NUMBER	
REFERENCE DOCUMENTS	
DOC NO	

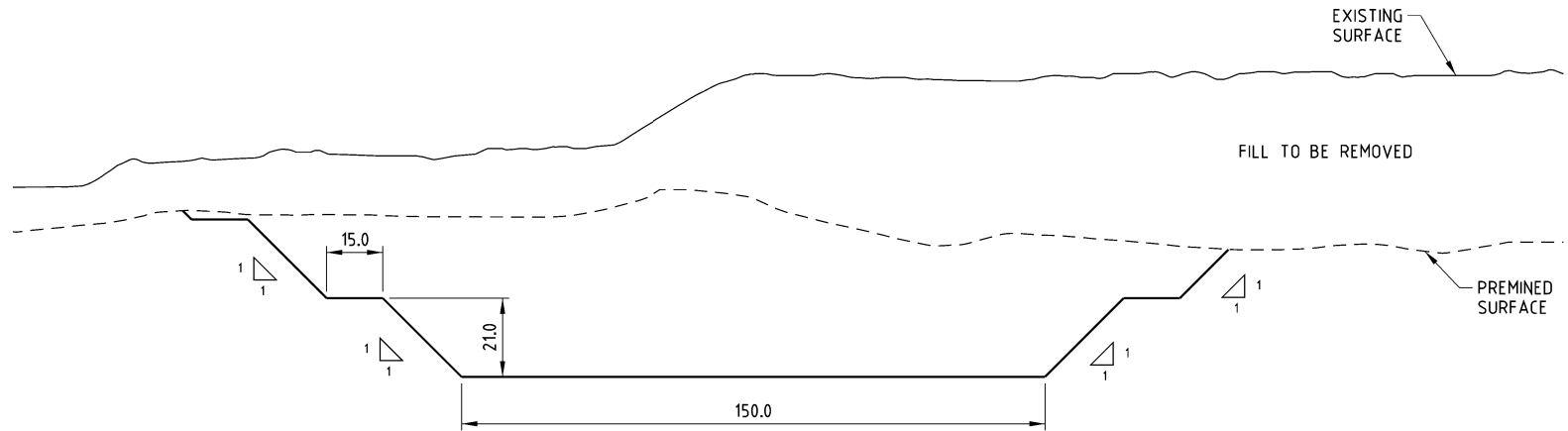
CONSTRUCTION AS-BUILT (RED INK)		COMMISSIONING AS-BUILT (BLUE INK)		BHPIO TO COMPLETE		BHPIO/REVIEWER TO COMPLETE		DESIGNER/CONTRACTOR TO COMPLETE		Worley		BHP Iron Ore Pty Ltd	
COMPANY		COMPANY		DRAWING STATUS REVIEW		COMPANY		COMPANY		Worley		STUDY PHASE	
SIGNATURE		SIGNATURE		INFORMATION ONLY		SIGNED		DESIGNED BY		Worley		WAIO PROJECT - YANDI CLOSURE LANDFORM	
NAME		NAME		AS BUILT		DATE		DRAWN BY		BHP		SURFACE WATER STRUCTURES	
PROJECT CODE		PROJECT CODE		CONSTRUCTION MAY PROCEED		REV		CHECKED BY		Worley		W1-SP0 FLOOD CHANNEL - SHEET 1 OF 2	
<input type="checkbox"/> DRAWING MARKED UP		<input type="checkbox"/> DRAWING MARKED UP		CONSTRUCTION MAY PROCEED EXCEPT AS NOTED				DESIGN & HSEC APPROVED BY		Worley		SCALE AS SHOWN	
<input type="checkbox"/> NO CHANGE		<input type="checkbox"/> NO CHANGE		REVISE AND RESUBMIT				THIS DRAWING HAS BEEN REVIEWED FOR GENERAL COMPLIANCE TO SCOPE AND COMPANY STANDARDS		Worley		A1 DRG. NO. 1200 - C - 16002 /B	
B 31.124 ISSUED FOR CLIENT REVIEW		A 24.124 ISSUED FOR INTERNAL REVIEW		REVISION		NO DATE		REVISION		Worley		ABN 46 008 700 981	
NO DATE		NO DATE		REVISION COMMENT TO INCLUDE PROJECT CODE FOR ALL REVISIONS		NO DATE		REVISION COMMENT TO INCLUDE PROJECT CODE FOR ALL REVISIONS		Worley			



PLAN
SCALE 1:5000

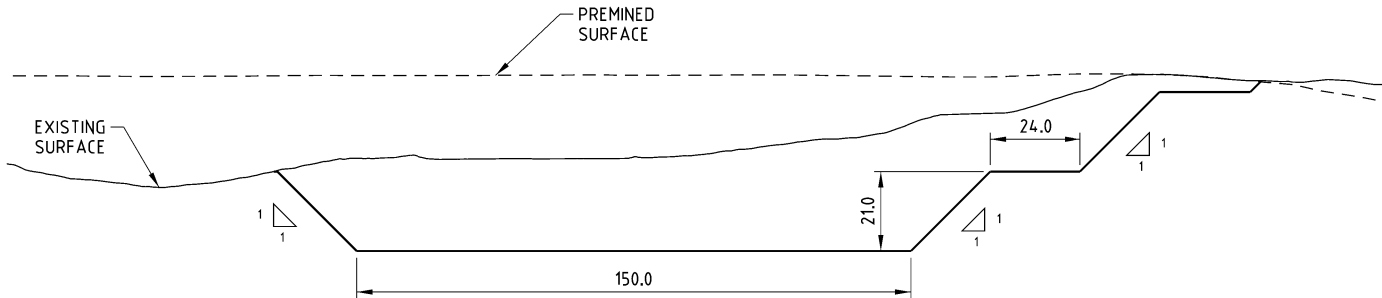


DETAIL
SCALE 1:100
1200-C-16002



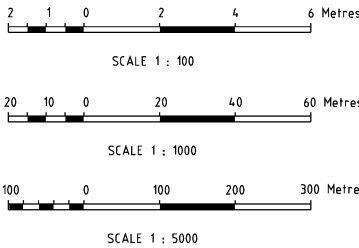
SECTION
SCALE 1:1000
C

CHAINAGE 660 - 860 TYPICAL SECTION



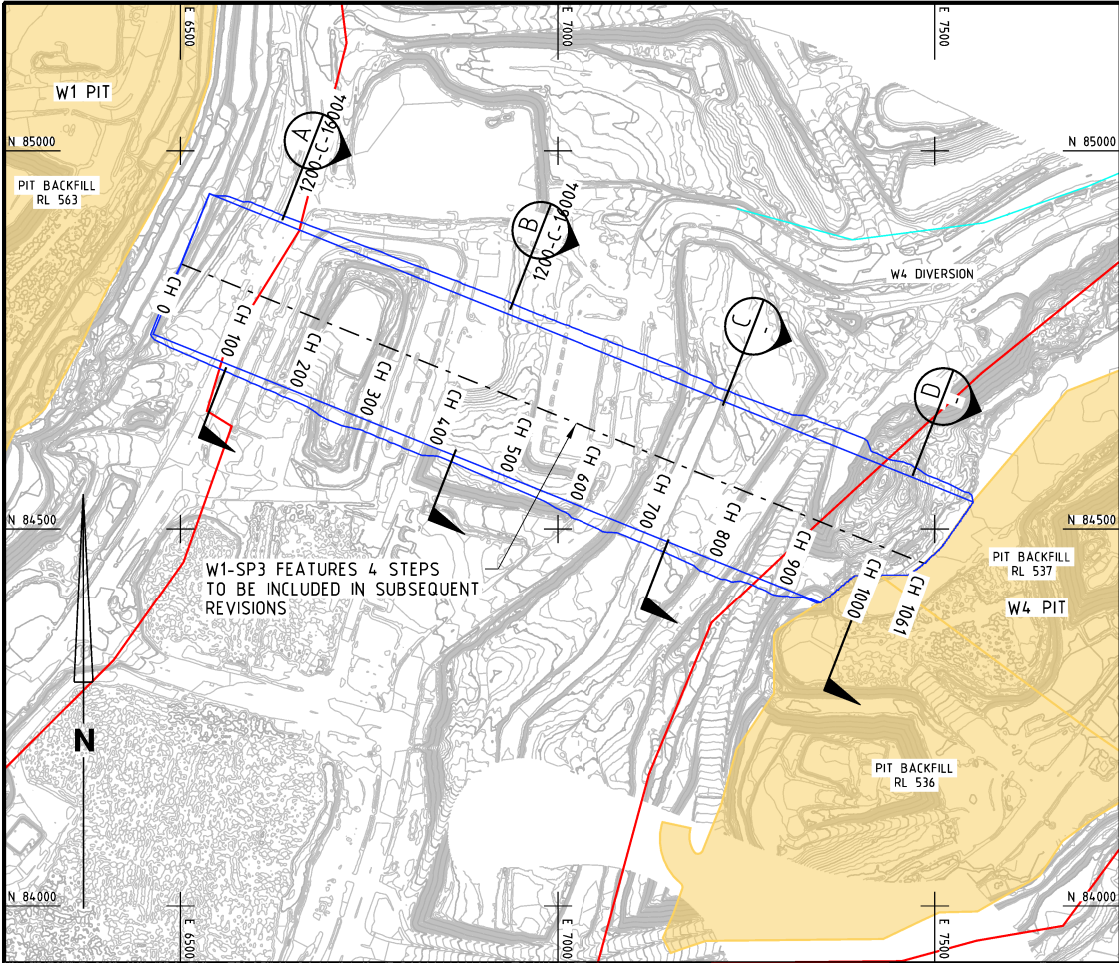
SECTION
SCALE 1:1000
D

CHAINAGE 860 - 1032 TYPICAL SECTION

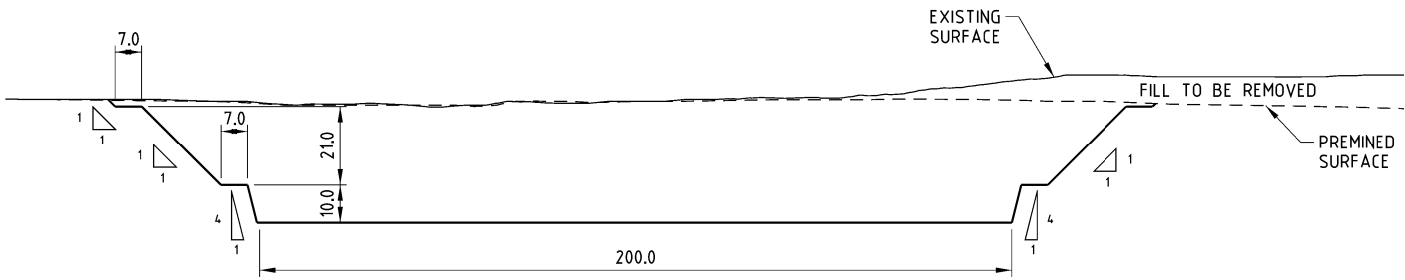


GENERAL NOTES			
1. ALL LEVELS ARE METRIC AND TO AUSTRALIAN HEIGHT DATUM (AHD). HORIZONTAL GEODETIC DATUM TO YANDI MINE GRID			
2. DIMENSIONS IN METRES UNLESS NOTED OTHERWISE			
LEGEND			
<div><div></div>FLOOD CHANNEL</div> <div><div></div>FLOOD PROTECTION BUNDS</div> <div><div></div>DIVERSION DRAINS</div> <div><div></div>FLOODPLAIN LANDFORM</div> <div><div></div>PIT BACKFILL</div> <div><div></div>PIT LAKE</div> <div><div></div>TENEMENT BOUNDARY</div> <div><div></div>MINE PIT BOUNDARY</div>			
		SURFACE WATER STRUCTURES W1-SP0 FLOOD CHANNEL - SHEET 1 OF 2	1200-C-16002
		SURFACE WATER STRUCTURES GENERAL ARRANGEMENT - SHEET 1 OF 4	1200-C-15993
		SURFACE WATER STRUCTURES SITE PLAN	1200-C-15992
		CONTRACT NUMBER OR PURCHASE ORDER NUMBER	FX.00.0.15586
		REFERENCE DOCUMENTS	DOC NO

CONSTRUCTION AS-BUILT (RED INK)		COMMISSIONING AS-BUILT (BLUE INK)								BHPIO TO COMPLETE		BHPIO/REVIEWER TO COMPLETE		DESIGNER/CONTRACTOR TO COMPLETE		<div><div><div><div><div><div></div><div>Worley</div><div>energy mining infrastructure</div></div><div><div>APPROVED</div><div>17 Jan 25</div></div><div><div>DESIGN NAME</div><div>120003</div></div><div><div>SCALE</div><div>A1</div></div></div></div></div><div><div><div></div><div>BHP</div><div>Iron Ore Pty Ltd</div></div><div>ABN 46 008 700 981</div></div></div>			
COMPANY		COMPANY									DRAWING STATUS REVIEW		SIGNED		DATE		REV		
SIGNATURE		SIGNATURE									INFORMATION ONLY		COMPANY		BHP		WORLEY		
NAME		NAME									AS BUILT		SIGNED						
PROJECT CODE		PROJECT CODE		B	31.124	ISSUED FOR CLIENT REVIEW						CONSTRUCTION MAY PROCEED							
<input type="checkbox"/> DRAWING MARKED UP		<input type="checkbox"/> DRAWING MARKED UP									CONSTRUCTION MAY PROCEED EXCEPT AS NOTED								
<input type="checkbox"/> NO CHANGE		<input type="checkbox"/> NO CHANGE		A	24.124	ISSUED FOR INTERNAL REVIEW						REVISE AND RESUBMIT						THIS DRAWING HAS BEEN REVIEWED FOR GENERAL COMPLIANCE TO SCOPE AND COMPANY STANDARDS	
				NO	DATE	REVISION TO INCLUDE PROJECT CODE FOR ALL REVISIONS				NO	DATE	REVISION TO INCLUDE PROJECT CODE FOR ALL REVISIONS							

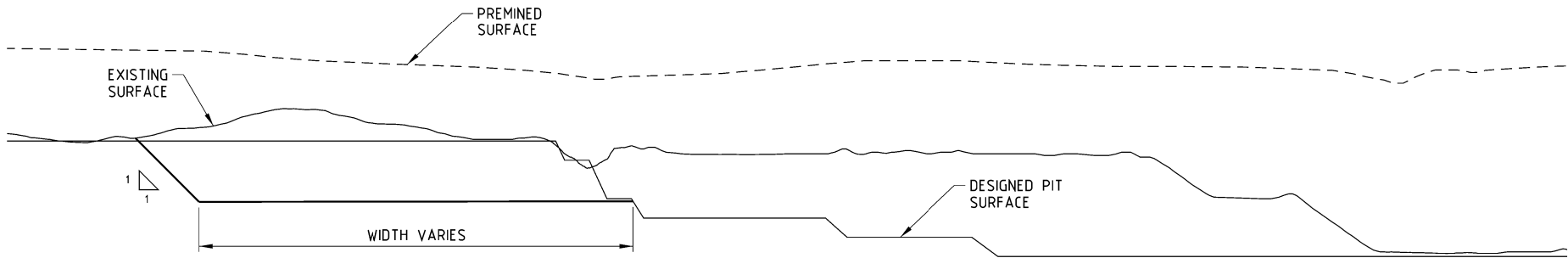


PLAN
SCALE 1:5000



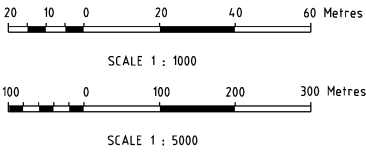
SECTION C
SCALE 1:1000

CHAINAGE 620 - 800 TYPICAL SECTION



SECTION D
SCALE 1:1000

CHAINAGE 800 - 1061 TYPICAL SECTION



GENERAL NOTES		
1. ALL LEVELS ARE METRIC AND TO AUSTRALIAN HEIGHT DATUM (AHD). HORIZONTAL GEODETIC DATUM TO YANDI MINE GRID		
2. DIMENSIONS IN METRES UNLESS NOTED OTHERWISE		
LEGEND		
FLOOD CHANNEL		
FLOOD PROTECTION BUNDS		
DIVERSION DRAINS		
FLOODPLAIN LANDFORM		
PIT BACKFILL		
PIT LAKE		
TENEMENT BOUNDARY		
MINE PIT BOUNDARY		
SURFACE WATER STRUCTURES W1-SP3 FLOOD CHANNEL - SHEET 1 OF 2		1200-C-16004
SURFACE WATER STRUCTURES GENERAL ARRANGEMENT - SHEET 1 OF 4		1200-C-15993
SURFACE WATER STRUCTURES SITE PLAN		1200-C-15992
CONTRACT NUMBER OR PURCHASE ORDER NUMBER		FX.00.0.15586
REFERENCE DOCUMENTS		DOC NO

CONSTRUCTION AS-BUILT (RED INK)		COMMISSIONING AS-BUILT (BLUE INK)		BHP TO COMPLETE		BHP/REVIEWER TO COMPLETE		DESIGNER/CONTRACTOR TO COMPLETE		Worley		BHP Iron Ore Pty Ltd	
COMPANY		COMPANY		DRAWING STATUS REVIEW		COMPANY		COMPANY		APPROVED		STUDY PHASE	
SIGNATURE		SIGNATURE		INFORMATION ONLY		SIGNED		DESIGNED BY		CHECKED		WAIO PROJECT - YANDI CLOSURE LANDFORM	
NAME		NAME		AS BUILT		DATE		DRAWN BY		DATE		SURFACE WATER STRUCTURES	
PROJECT CODE		PROJECT CODE		CONSTRUCTION MAY PROCEED		REV		CHECKED BY		DATE		W1-SP3 FLOOD CHANNEL - SHEET 2 OF 2	
<input type="checkbox"/> DRAWING MARKED UP		<input type="checkbox"/> DRAWING MARKED UP		CONSTRUCTION MAY PROCEED EXCEPT AS NOTED				DESIGN & HSEC APPROVED BY				SCALE AS SHOWN	
<input type="checkbox"/> NO CHANGE		<input type="checkbox"/> NO CHANGE		REVISE AND RESUBMIT				THIS DRAWING HAS BEEN REVIEWED FOR GENERAL COMPLIANCE TO SCOPE AND COMPANY STANDARDS				A1 DRG. NO. 1200 - C - 16005 /B	
B 31.124 ISSUED FOR CLIENT REVIEW		A 26.124 ISSUED FOR INTERNAL REVIEW		REVISION		REVISION							
NO DATE REVISION COMMENT TO INCLUDE PROJECT CODE FOR ALL REVISIONS		NO DATE REVISION COMMENT TO INCLUDE PROJECT CODE FOR ALL REVISIONS											



NOTE: THE DIVERSION WIDTH IS RESTRICTED BY
THE PIT EDGE AND TENEMENT BOUNDARY
* BATTER SLOPES ARE DEPENDANT ON LOCAL GEOLOGY

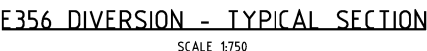


NOTE: THE DIVERSION ACTS AS A CUT-OFF DRAIN
AND THE CROSS SECTION SHOULD INCREASE
IN SIZE DOWNSTREAM

* BATTER SLOPES ARE DEPENDANT ON LOCAL GEOLOGY

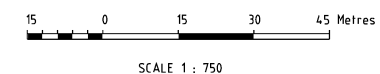


NOTE: THIS CROSS SECTION WIDTH ASSUMES
THE RAIL WILL BE REMOVED AT CLOSURE
* BATTER SLOPES ARE DEPENDANT ON LOCAL GEOLOGY



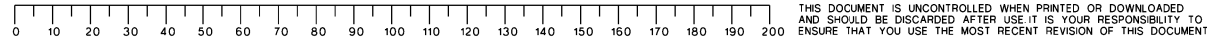
NOTE: THE DIVERSION ACTS AS A CUT-OFF DRAIN
AND THE CROSS SECTION SHOULD INCREASE
IN SIZE DOWNSTREAM

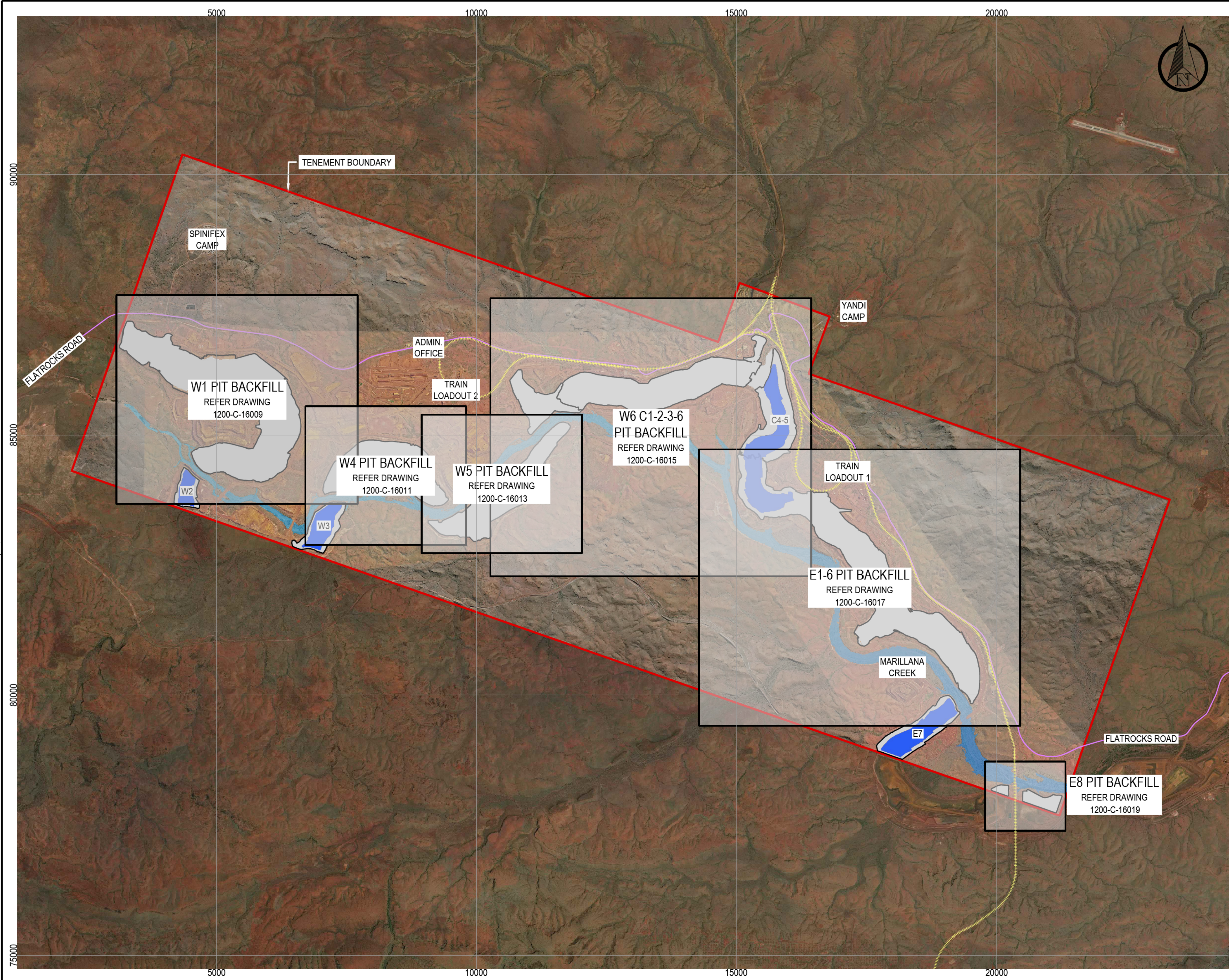
* BATTER SLOPES ARE DEPENDANT ON LOCAL GEOLOGY



SURFACE WATER STRUCTURES SITE PLAN	1200-C-15992
CONTRACT NUMBER OR PURCHASE ORDER NUMBER	F X.00.0.15586
REFERENCE DOCUMENTS	DOC NO

CONSTRUCTION AS-BUILT (RED INK)		COMMISSIONING AS-BUILT (BLUE INK)								BHP/IO TO COMPLETE			BHP/IO/REVIEWER TO COMPLETE			DESIGNER/CONTRACTOR TO COMPLETE			<div><div><div><div><div><div></div><div>Worley</div><div><small>energy mining infrastructure</small></div></div><div><small>DESIGN ENGINEERING CONSTRUCTION</small></div><div><small>IMPROVES 10 TIMES 20 YEARS</small></div></div></div><div><div><div></div><div>BHP</div></div></div></div><div>BHP Iron Ore Pty Ltd</div><div>ABN 46 008 700 981</div></div>		
COMPANY		COMPANY								<div>DRAWING STATUS REVIEW</div> <div>SIGNED</div> <div>DATE</div> <div>REV</div>			COMPANY BHP			COMPANY WORLEY			<div>STUDY PHASE</div> <div>WAIO PROJECT - YANDI CLOSURE LANDFORM</div> <div>SURFACE WATER STRUCTURES</div> <div>DIVERSION DRAINS - SHEET 1 OF 1</div>		
SIGNATURE		SIGNATURE								INFORMATION ONLY			SIGNED			DESIGNED BY					
NAME		NAME		B	12.2.24	ISSUED FOR CLIENT REVIEW - FX.00.0.15586					AS BUILT						DRAWN BY				
PROJECT CODE		PROJECT CODE		A	7.2.24	ISSUED FOR INTERNAL REVIEW					CONSTRUCTION MAY PROCEED						CHECKED BY				
<div><div><input type="checkbox"/> DRAWING MARKED UP</div><div><input type="checkbox"/> NO CHANGE</div></div>		<div><div><input type="checkbox"/> DRAWING MARKED UP</div><div><input type="checkbox"/> NO CHANGE</div></div>		NO	DATE	REVISION TO INCLUDE PROJECT CODE FOR ALL REVISIONS			NO	DATE	REVISION TO INCLUDE PROJECT CODE FOR ALL REVISIONS			THIS DRAWING HAS BEEN REVIEWED FOR GENERAL COMPLIANCE TO SCOPE AND COMPANY STANDARDS			DESIGN & HSEC APPROVED BY				
											REVISE AND RESUBMIT						SCALE AS SHOWN				
																	A1 DRG. NO. 1200 C 16007 /B				





NOTES

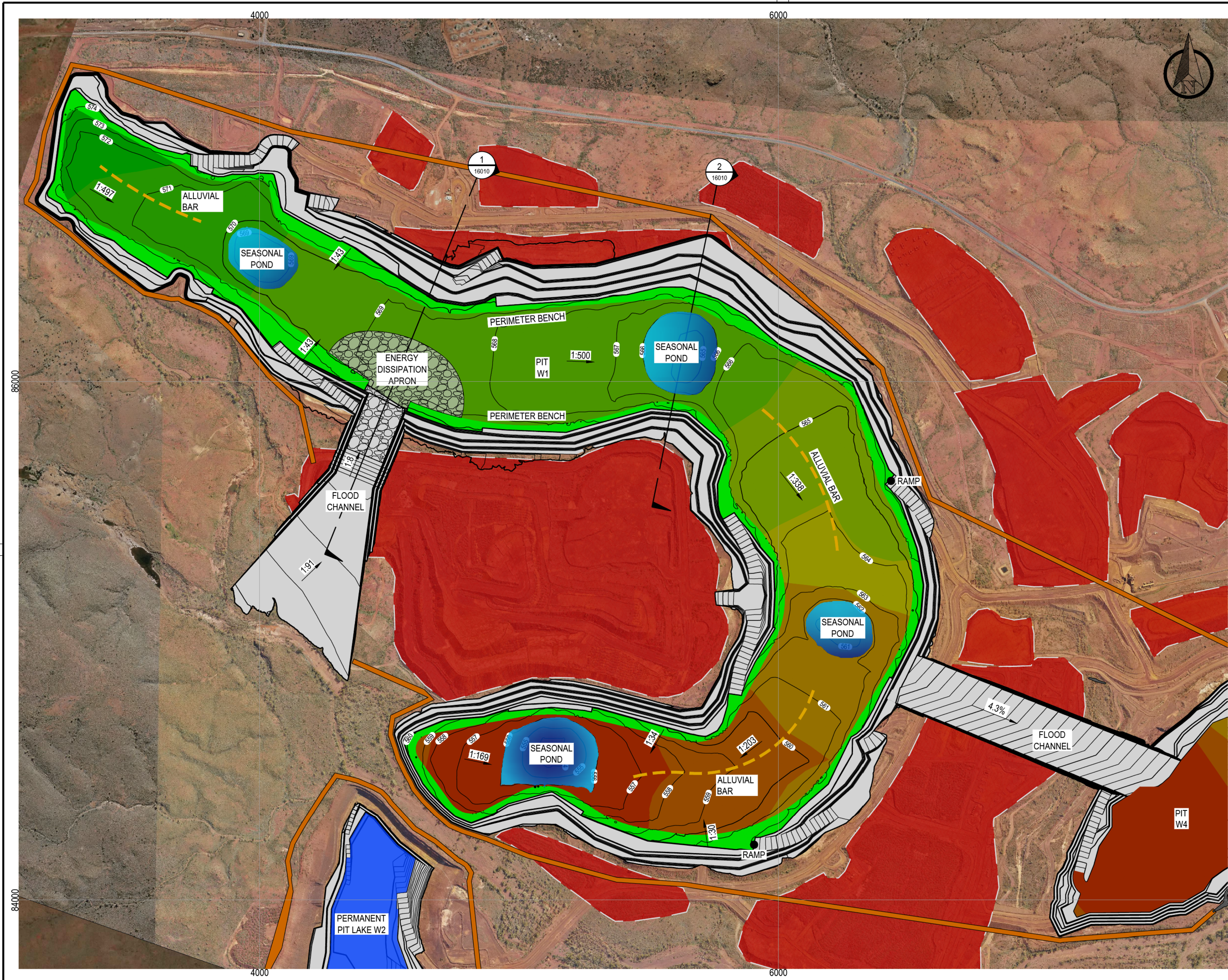
- 1. ALL UNITS IN METRES U.N.O.
- 2. COORDINATE SYSTEM: YANDI PROJECT GRID (YAN94)

LEGEND

- PIT SHELL
- PERMANENT PIT LAKE

YANDI CLOSURE LANDFORM E8 PIT BACKFILL LAYOUT	1200-C-16019
YANDI CLOSURE LANDFORM E1-6 PIT BACKFILL LAYOUT	1200-C-16017
YANDI CLOSURE LANDFORM W6 C1-2-3-6 PIT BACKFILL LAYOUT	1200-C-16015
YANDI CLOSURE LANDFORM W5 PIT BACKFILL LAYOUT	1200-C-16013
YANDI CLOSURE LANDFORM W4 PIT BACKFILL LAYOUT	1200-C-16011
YANDI CLOSURE LANDFORM W1 PIT BACKFILL LAYOUT	1200-C-16009
CONTRACT NUMBER OR PURCHASE ORDER NUMBER	
REFERENCE DOCUMENTS	DOC NO

CONSTRUCTION AS-BUILT (RED INK)		COMMISSIONING AS-BUILT (BLUE INK)				BHP TO COMPLETE		BHP/REVIEWER TO COMPLETE		DESIGNER/CONTRACTOR TO COMPLETE		Worley		BHP Iron Ore Pty Ltd A.B.N. 46 008 700 981	
COMPANY	SIGNATURE	NAME	PROJECT CODE				DRAWING STATUS REVIEW	SIGNED	DATE	REV	COMPANY	BHP/IO	COMPANY	ADVISIAN	STUDY PHASE
							INFORMATION ONLY						DESIGNED BY		WAIO PROJECT - YANDI CLOSURE LANDFORM
							AS BUILT						DRAWN BY		PIT BACKFILL AND LANDFORM DESIGN
							CONSTRUCTION MAY PROCEED						CHECKED BY		GENERAL ARRANGEMENT
							CONSTRUCTION MAY PROCEED EXCEPT AS NOTED						DESIGN & HSEC APPROVED BY		
							REVISE AND RESUBMIT								
THIS DRAWING HAS BEEN REVIEWED FOR GENERAL COMPLIANCE TO SCOPE AND COMPANY STANDARDS															
SCALE 1: 375000		A1		DRG. NO. 1200		C		16008		/B					

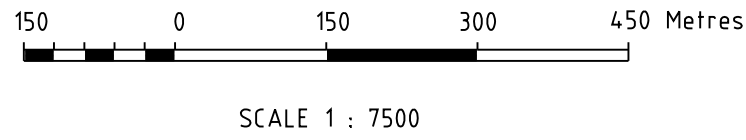


NOTES

- 1. ALL UNITS IN METRES U.N.O.
- 2. COORDINATE SYSTEM: YANDI PROJECT GRID (YAN94)

LEGEND

- PIT SHELL
- PIT BACKFILL
- SEASONAL POND
- PERMANENT PIT LAKE
- OSA RECLAMATION FOOTPRINT
- PERIMETER BENCH
- FLOOD BUND
- SAFETY BUND
- RIP-RAP
- ALLUVIAL BAR



YANDI CLOSURE LANDFORM E8 PIT BACKFILL LAYOUT	1200-C-16019
YANDI CLOSURE LANDFORM E1-6 PIT BACKFILL LAYOUT	1200-C-16017
YANDI CLOSURE LANDFORM W6 C1-2-3-6 PIT BACKFILL LAYOUT	1200-C-16015
YANDI CLOSURE LANDFORM W5 PIT BACKFILL LAYOUT	1200-C-16013
YANDI CLOSURE LANDFORM W4 PIT BACKFILL LAYOUT	1200-C-16011
YANDI CLOSURE LANDFORM PIT BACKFILL - GENERAL ARRANGEMENT	1200-C-16008
CONTRACT NUMBER OR PURCHASE ORDER NUMBER	
REFERENCE DOCUMENTS	DOC NO

CONSTRUCTION AS-BUILT (RED INK)		COMMISSIONING AS-BUILT (BLUE INK)				BHPIO TO COMPLETE		BHPIO/REVIEWER TO COMPLETE		DESIGNER/CONTRACTOR TO COMPLETE		Worley		BHP		BHP Iron Ore Pty Ltd A.B.N. 46 008 700 981																					
COMPANY	SIGNATURE	NAME	PROJECT CODE	DATE	REVISION	REVISION COMMENT TO INCLUDE PROJECT CODE FOR ALL REVISIONS	NO	DATE	REVISION	REVISION COMMENT TO INCLUDE PROJECT CODE FOR ALL REVISIONS	NO	DATE	DRAWING STATUS REVIEW	SIGNED	DATE	REV	INFORMATION ONLY	AS BUILT	CONSTRUCTION MAY PROCEED	CONSTRUCTION MAY PROCEED EXCEPT AS NOTED	REVISE AND RESUBMIT	COMPANY	BHPIO	SIGNED	THIS DRAWING HAS BEEN REVIEWED FOR GENERAL COMPLIANCE TO SCOPE AND COMPANY STANDARDS	COMPANY	ADVISIAN	DESIGNED BY	DRAWN BY	CHECKED BY	DESIGN & HSEC APPROVED BY	SCALE 1:7500	A1 DRG. NO. 1200 - C - 16009 /B				
B		07.12.23	ISSUED FOR CLIENT REVIEW																																		
A		20.11.23	ISSUED FOR INTERNAL REVIEW																																		
NO		DATE	REVISION																																		