

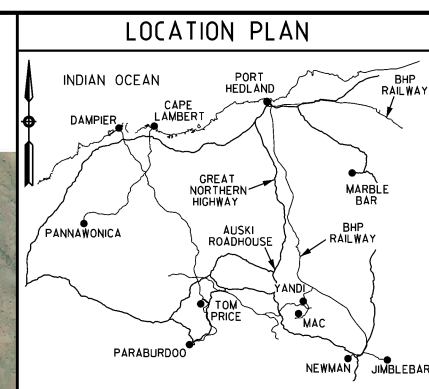
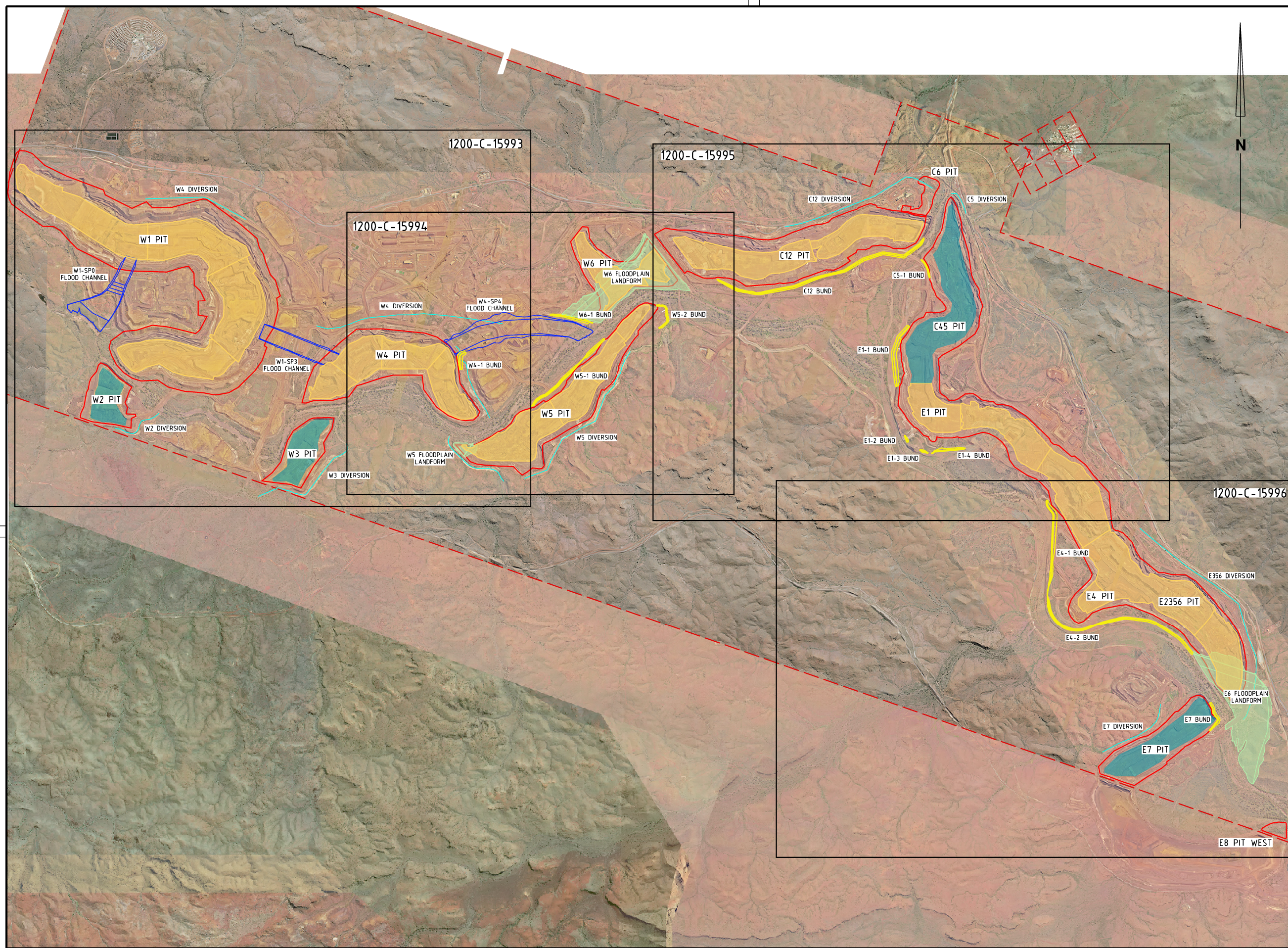


BHP Iron Ore Pty Ltd
Marillana Creek (Yandi) Closure Plan

Appendix P






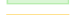




Appendix P Design drawings



GENERAL NOTES	
1.	ALL LEVELS ARE METRIC AND TO AUSTRALIAN HEIGHT DATUM (AHD). HORIZONTAL GEODETIC DATUM TO YANDI MINE GRID

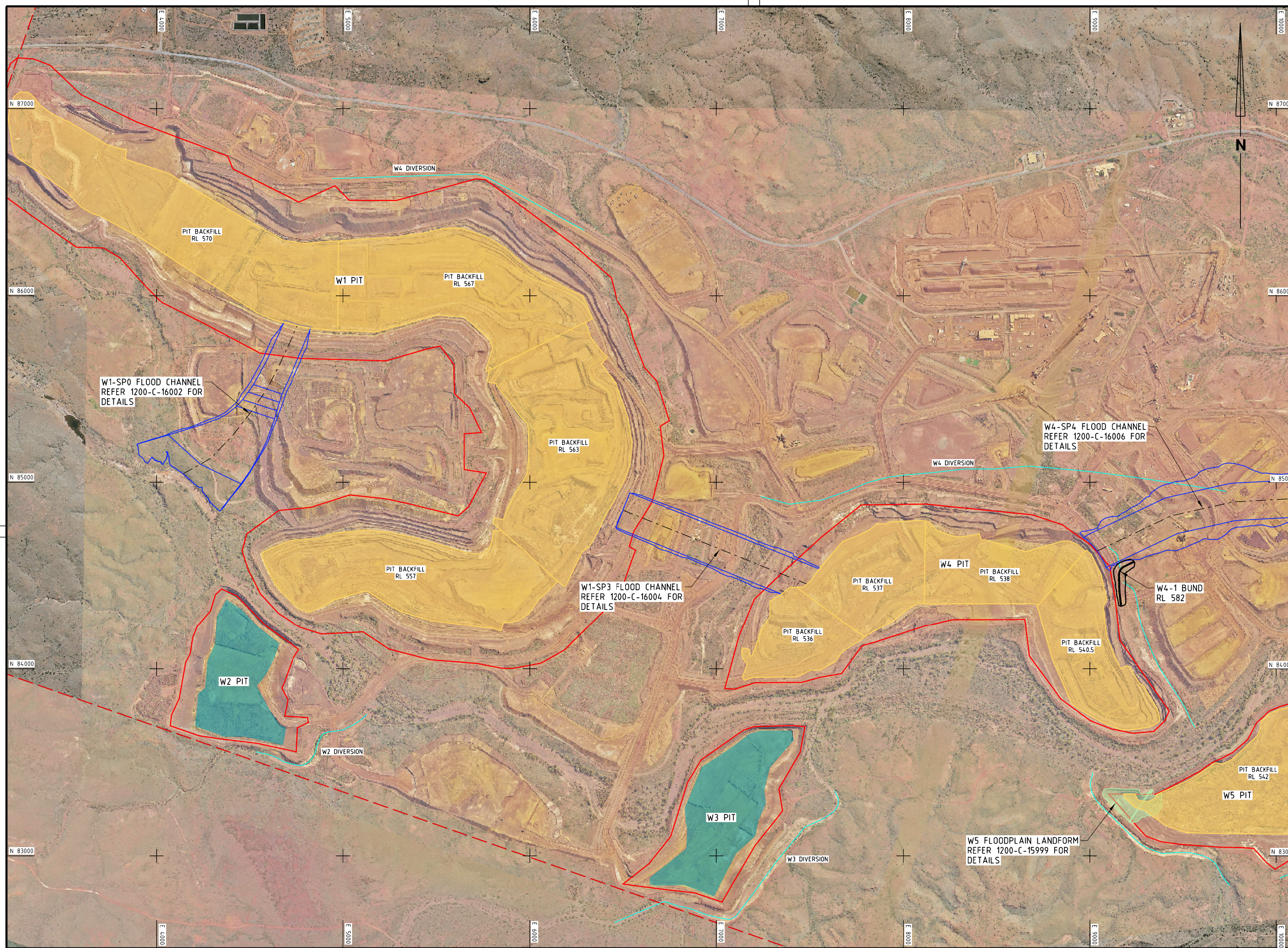
LEGEND

-  FLOOD CHANNEL
-  FLOOD PROTECTION BUNDS
-  DIVERSION DRAINS
-  FLOODPLAIN LANDFORM
-  PIT BACKFILL
-  PIT LAKE
-  TENEMENT BOUNDARY
-  MINE PIT BOUNDARY

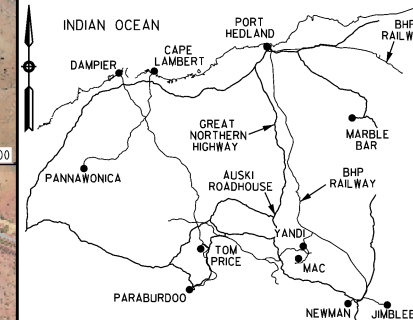


SURFACE WATER STRUCTURES GENERAL ARRANGEMENT - SHEET 4 OF 4	1200-C-15996
SURFACE WATER STRUCTURES GENERAL ARRANGEMENT - SHEET 3 OF 4	1200-C-15995
SURFACE WATER STRUCTURES GENERAL ARRANGEMENT - SHEET 2 OF 4	1200-C-15994
SURFACE WATER STRUCTURES GENERAL ARRANGEMENT - SHEET 1 OF 4	1200-C-15993
CONTRACT NUMBER OR PURCHASE ORDER NUMBER	F.X.00.0.15586
REFERENCE DOCUMENTS	DOC NO

CONSTRUCTION AS-BUILT (RED INK)		COMMISSIONING AS-BUILT (BLUE INK)					BHP TO COMPLETE			BHP/REVIEWER TO COMPLETE			DESIGNER/CONTRACTOR TO COMPLETE			<div><div><div><div><div><div></div><div>Worley</div><div></div></div><div><div></div><div></div><div></div></div><div><div></div><div></div><div></div></div></div><div><div>APPROVED</div><div>31 Jan 24</div></div><div><div>CHECKED NAME</div><div>2nd Stage OK</div></div></div></div><div><div><div><div></div><div>BHP</div><div></div></div></div></div><div>BHP Iron Ore Pty Ltd</div><div>ABN 66 006 700 981</div></div>		
COMPANY _____		COMPANY _____					<div>DRAWING STATUS REVIEW</div> <div>SIGNED DATE REV</div>			<div>COMPANY</div> <div>BHP</div>			<div>COMPANY</div> <div>WORLEY</div>			<div><div><div><div></div><div>BHP</div><div></div></div></div></div>		
SIGNATURE _____		SIGNATURE _____					INFORMATION ONLY _____						DESIGNED BY _____					
NAME _____		NAME _____		B 31.124 ISSUED FOR CLIENT REVIEW			AS BUILT _____			SIGNED _____			DRAWN BY _____					
PROJECT CODE _____		PROJECT CODE _____		A 16.124 ISSUED FOR INTERNAL REVIEW			CONSTRUCTION MAY PROCEED _____			THIS DRAWING HAS BEEN REVIEWED FOR GENERAL COMPLIANCE TO SCOPE AND COMPANY STANDARDS			CHECKED BY _____					
<div><div><div><div></div><div>DRAWING MARKED UP</div><div></div></div><div><div></div><div>NO CHANGE</div><div></div></div></div></div>		<div><div><div><div></div><div>DRAWING MARKED UP</div><div></div></div><div><div></div><div>NO CHANGE</div><div></div></div></div></div>		NO DATE REVISION REVISION COMMENT TO INCLUDE PROJECT CODE FOR ALL REVISIONS			NO DATE REVISION REVISION COMMENT TO INCLUDE PROJECT CODE FOR ALL REVISIONS			CONSTRUCTION MAY PROCEED EXCEPT AS NOTED _____			DESIGN & HSEC APPROVED BY _____			SCALE 1: 25,000		
										REVISE AND RESUBMIT _____						A1 DRG.NO. 1200 C 15992 /B		








LOCATION PLAN

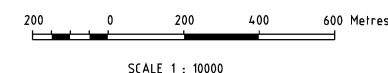


GENERAL NOTES

1. ALL LEVELS ARE METRIC AND TO AUSTRALIAN HEIGHT DATUM (AHD). HORIZONTAL GEODETIC DATUM TO YANDI MINE GRID

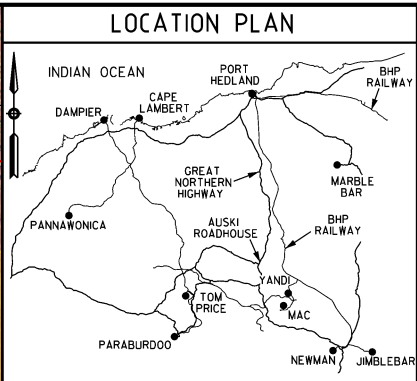
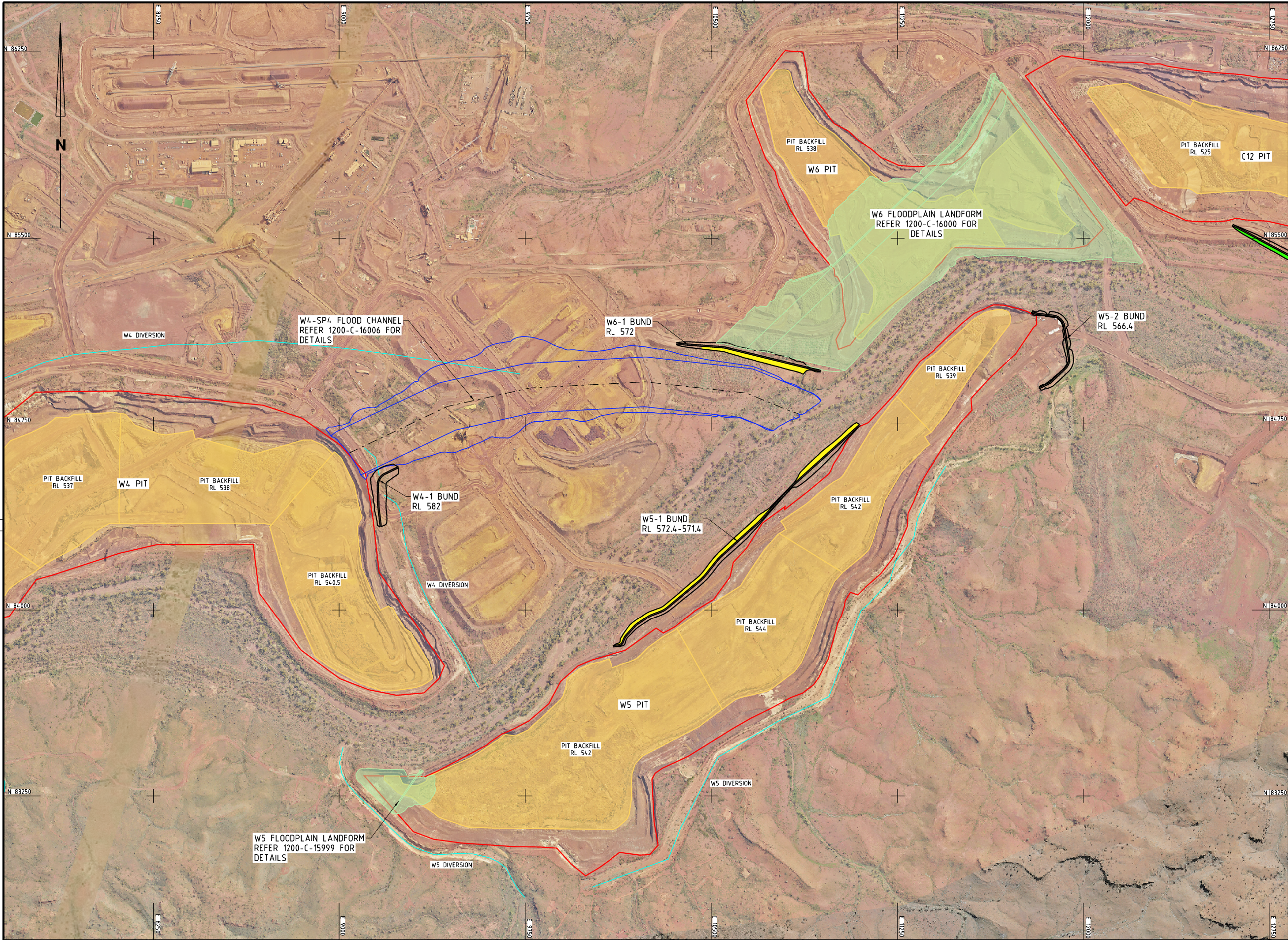
LEGEND

-  FLOOD CHANNEL
 FLOOD PROTECTION BUNDS
 DIVERSION DRAINS
 FACING CLASS ROCK PROTECTION
 LIGHT CLASS ROCK PROTECTION
 1/4 TONNE ROCK PROTECTION
 1/2 TONNE ROCK PROTECTION
 1.0 TONNE ROCK PROTECTION
 2.0 TONNE ROCK PROTECTION
 4.0 TONNE ROCK PROTECTION
 FLOODPLAIN LANDFORM
 PIT BACKFILL
 PIT LAKE
 TENEMENT BOUNDARY
 MINE PIT BOUNDARY



SURFACE WATER STRUCTURES FLOOD BUND TYPICAL SECTIONS - SHEET 1	1200-C-15997
SURFACE WATER STRUCTURES FLOOD BUND TYPICAL SECTIONS - SHEET 2	1200-C-15998
SURFACE WATER STRUCTURES W5 FLOODPLAIN LANDFORM	1200-C-15999
SURFACE WATER STRUCTURES W4-SP4 FLOOD CHANNEL	1200-C-16006
SURFACE WATER STRUCTURES W1-SP3 FLOOD CHANNEL	1200-C-16004
SURFACE WATER STRUCTURES W1-SP0 FLOOD CHANNEL	1200-C-16002
SURFACE WATER STRUCTURES SITE PLAN	1200-C-15992
CONTRACT NUMBER OR PURCHASE ORDER NUMBER	FX.00.0.15586
REFERENCE DOCUMENTS	DOC NO

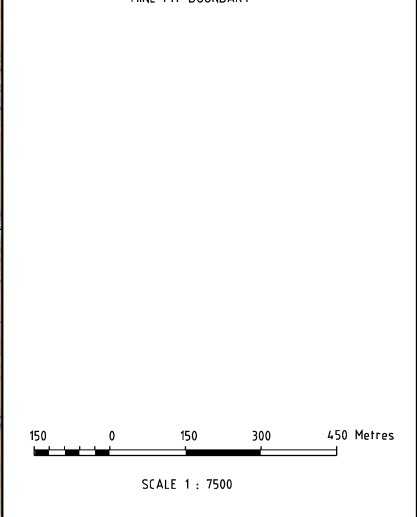
[illegible]



GENERAL NOTES

1. ALL LEVELS ARE METRIC AND TO AUSTRALIAN HEIGHT DATUM (AHD). HORIZONTAL GEODETIC DATUM TO YANDI MINE GRID

- LEGEND**
- FLOOD CHANNEL
 - FLOOD PROTECTION BUNDS
 - DIVERSION DRAINS
 - FACING CLASS ROCK PROTECTION
 - LIGHT CLASS ROCK PROTECTION
 - 1/4 TONNE ROCK PROTECTION
 - 1/2 TONNE ROCK PROTECTION
 - 1.0 TONNE ROCK PROTECTION
 - 2.0 TONNE ROCK PROTECTION
 - 4.0 TONNE ROCK PROTECTION
 - FLOODPLAIN LANDFORM
 - PIT BACKFILL
 - PIT LAKE
 - TENEMENT BOUNDARY
 - MINE PIT BOUNDARY



SURFACE WATER STRUCTURES FLOOD BUND TYPICAL SECTIONS - SHEET 1	1200-C-15997
SURFACE WATER STRUCTURES FLOOD BUND TYPICAL SECTIONS - SHEET 2	1200-C-15998
SURFACE WATER STRUCTURES W6 FLOODPLAIN LANDFORM	1200-C-16000
SURFACE WATER STRUCTURES W5 FLOODPLAIN LANDFORM	1200-C-15999
SURFACE WATER STRUCTURES W4-SP4 FLOOD CHANNEL	1200-C-16006
SURFACE WATER STRUCTURES SITE PLAN	1200-C-15992
CONTRACT NUMBER OR PURCHASE ORDER NUMBER	FX.00.D.15586
REFERENCE DOCUMENTS	DOC NO

CONSTRUCTION AS-BUILT (RED INK)		COMMISSIONING AS-BUILT (BLUE INK)		BHPIO TO COMPLETE		BHPIO/REVIEWER TO COMPLETE		DESIGNER/CONTRACTOR TO COMPLETE		Worley		BHP Iron Ore Pty Ltd	
COMPANY	SIGNATURE	COMPANY	SIGNATURE	DRAWING STATUS	REVIEW	SIGNED	DATE	REV	COMPANY	SIGNED	DATE	DESIGNED BY	DATE
NAME	PROJECT CODE	NAME	PROJECT CODE	AS BUILT	CONSTRUCTION MAY PROCEED	CONSTRUCTION MAY PROCEED	EXCEPT AS NOTED	REVISE AND RESUBMIT	THIS DRAWING HAS BEEN REVIEWED FOR GENERAL COMPLIANCE TO SCOPE AND COMPANY STANDARDS	WORLEY		DRAWN BY	
<input type="checkbox"/> DRAWING MARKED UP	<input type="checkbox"/> NO CHANGE	<input type="checkbox"/> DRAWING MARKED UP	<input type="checkbox"/> NO CHANGE	NO	DATE	REVISION	REVISION COMMENT TO INCLUDE PROJECT CODE FOR ALL REVISIONS	NO	DATE	REVISION	REVISION COMMENT TO INCLUDE PROJECT CODE FOR ALL REVISIONS	NO	DATE
B 31.124 ISSUED FOR CLIENT REVIEW		A 23.124 ISSUED FOR INTERNAL REVIEW											
SCALE 1: 7,500		A1 DRG. NO. 1200 - C - 15994 /B											