

## APPENDIX 3: PROPOSAL CONTENT DOCUMENT

# Template

## Proposal Content Document

**Table 1:** General proposal content description

<b>Proposal title</b>	Yalyalup Mineral Sands Project
<b>Proponent name</b>	Doral Mineral Sands Pty Ltd
<b>Short description</b>	The proposal includes the expansion of a mineral sands mine including mine pits with dewatering to facilitate dry mining techniques. Existing processing facilities, services and support infrastructure will be utilised. Mine voids will be progressively backfilled with sand and clay tailings and rehabilitated to pre-disturbance landuse (i.e. pasture).

**Table 2:** Proposal content elements

Proposal element	Location / description	Existing Proposal extent, capacity or range	Proposed Amendment (Content of S40AA)	Combined extent, capacity or range
<b>Physical elements</b>				
Mine elements including: <ul style="list-style-type: none"> <li>• Open pits</li> <li>• Roads</li> <li>• Laydown</li> <li>• Overburden stockpiles</li> <li>• Topsoil stockpiles</li> </ul>	Figure 1-2	Disturbance area of no more than 451.33ha, which includes no more than 2.72ha of native vegetation.	Additional disturbance area of 844.92ha, which includes up to 9.83ha of native vegetation to be cleared.	Combined disturbance area of up to 1,296.25ha with no more than 12.55ha of native vegetation.
Processing elements including: <ul style="list-style-type: none"> <li>• Ore stockpiles</li> <li>• Wet concentrator</li> <li>• Process water dam</li> </ul>			No change	
Infrastructure elements: <ul style="list-style-type: none"> <li>• Supporting infrastructure</li> <li>• Buildings</li> </ul>			No change	
<b>Operational elements</b>				

Proposal element	Location / description	Existing Proposal extent, capacity or range	Proposed Amendment (Content of S40AA)	Combined extent, capacity or range
Plant processing limit		Processing of ore to produce 1,085,000 tonnes of heavy mineral concentrate over life of mine	Processing of ore to produce ~1,300,000 tonnes of heavy mineral concentrate over life of mine	Processing of ore to produce ~2,385,000 tonnes of heavy mineral concentrate over life of mine
Groundwater abstraction for water supply		Up to 1.6GL per annum from the Yarragadee aquifer	No change	Up to 1.6GL per annum from the Yarragadee aquifer
<b>Proposal elements with greenhouse gas emissions</b>				
Operation elements:				
Scope 1	Mobile plant and equipment: 9,000 t Co <sub>2</sub> -e		No change	
Scope 2	Electricity use: 13,000 t Co <sub>2</sub> -e		No change	
<b>Rehabilitation</b>				
Progressive rehabilitation will be undertaken over the life of the mine.				
<b>Commissioning</b>				
N/A				
<b>Decommissioning</b>				
3 years after completion of mining				
<b>Other elements which affect extent of effects on the environment</b>				
Proposal time*	Maximum project life	5 years	10 years	15 years

\* Proponents should only provide realistic timeframes to avoid unnecessary change to proposal applications at referral (section 38C), assessment (section 43A) or post assessment (section 45C).

**Legend**

**Ministerial Statement 1168**

- Approved Yalyalup Development Envelope
- Approved Disturbance Area
- Approved Mining Area

**Section 40AA Request**

- Proposed Development Envelope

**Proposed Disturbance Area**

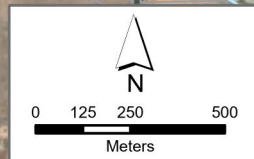
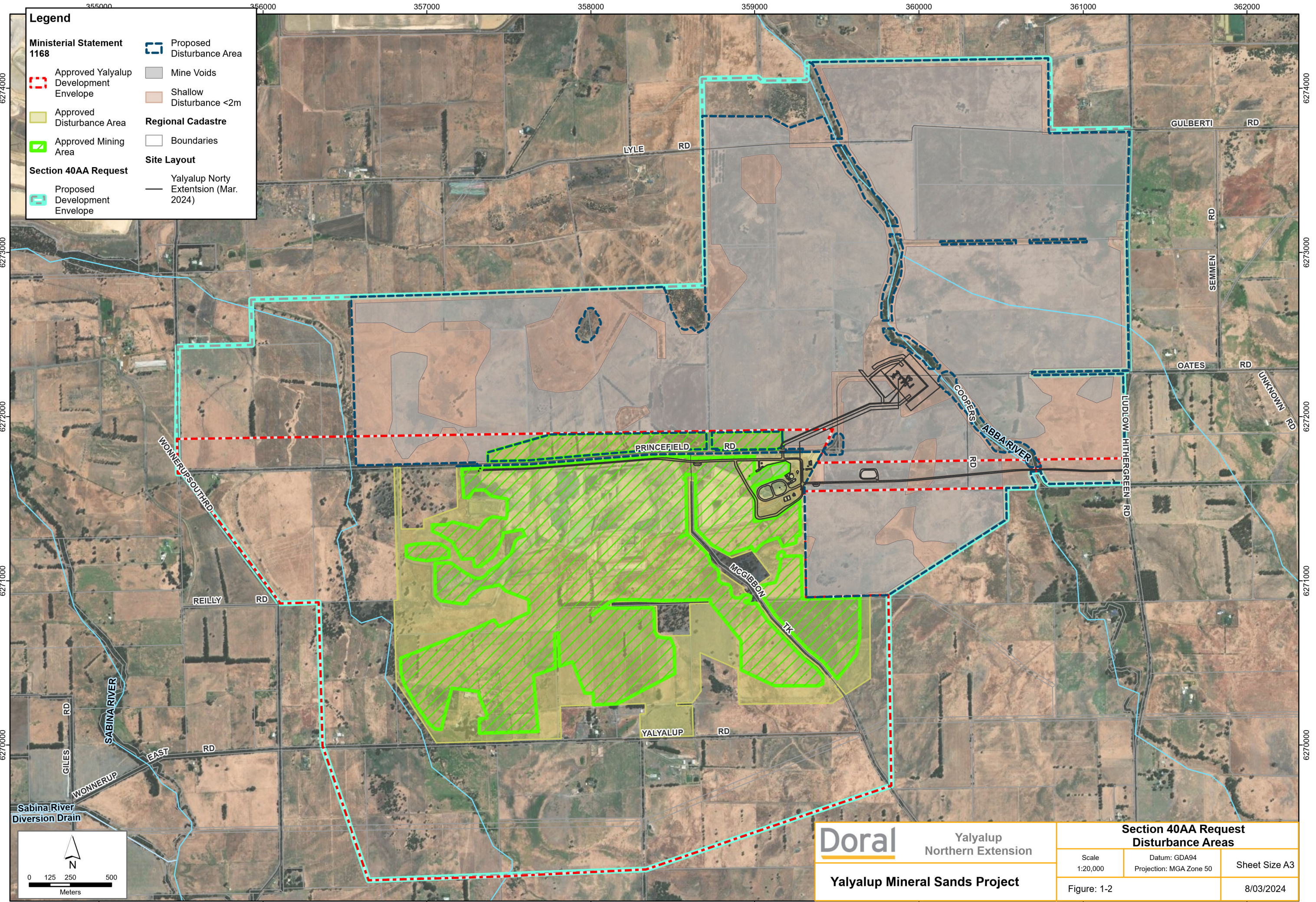
- Mine Voids
- Shallow Disturbance <2m

**Regional Cadastre**

- Boundaries

**Site Layout**

- Yalyalup Norty Extension (Mar. 2024)



**Doral** Yalyalup Northern Extension

**Yalyalup Mineral Sands Project**

Section 40AA Request Disturbance Areas		
Scale 1:20,000	Datum: GDA94 Projection: MGA Zone 50	Sheet Size A3
Figure: 1-2		8/03/2024