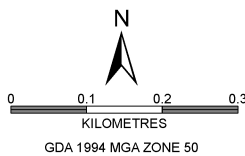


- Legend**
- Development Envelope (5,557 ha)
  - Indicative Footprint (2,360 ha)
  - ▲ Roost (cave) for Ghost Bat *Macroderma gigas* (EPBC-V, BC-V)
  - Mining Exclusion Zone - 100m Radius and Gorge/Gully Fauna Habitat
  - Blast Management Zone - 500m Radius
  - Conceptual Infrastructure Layout
  - Mine Pit
  - Stockpile



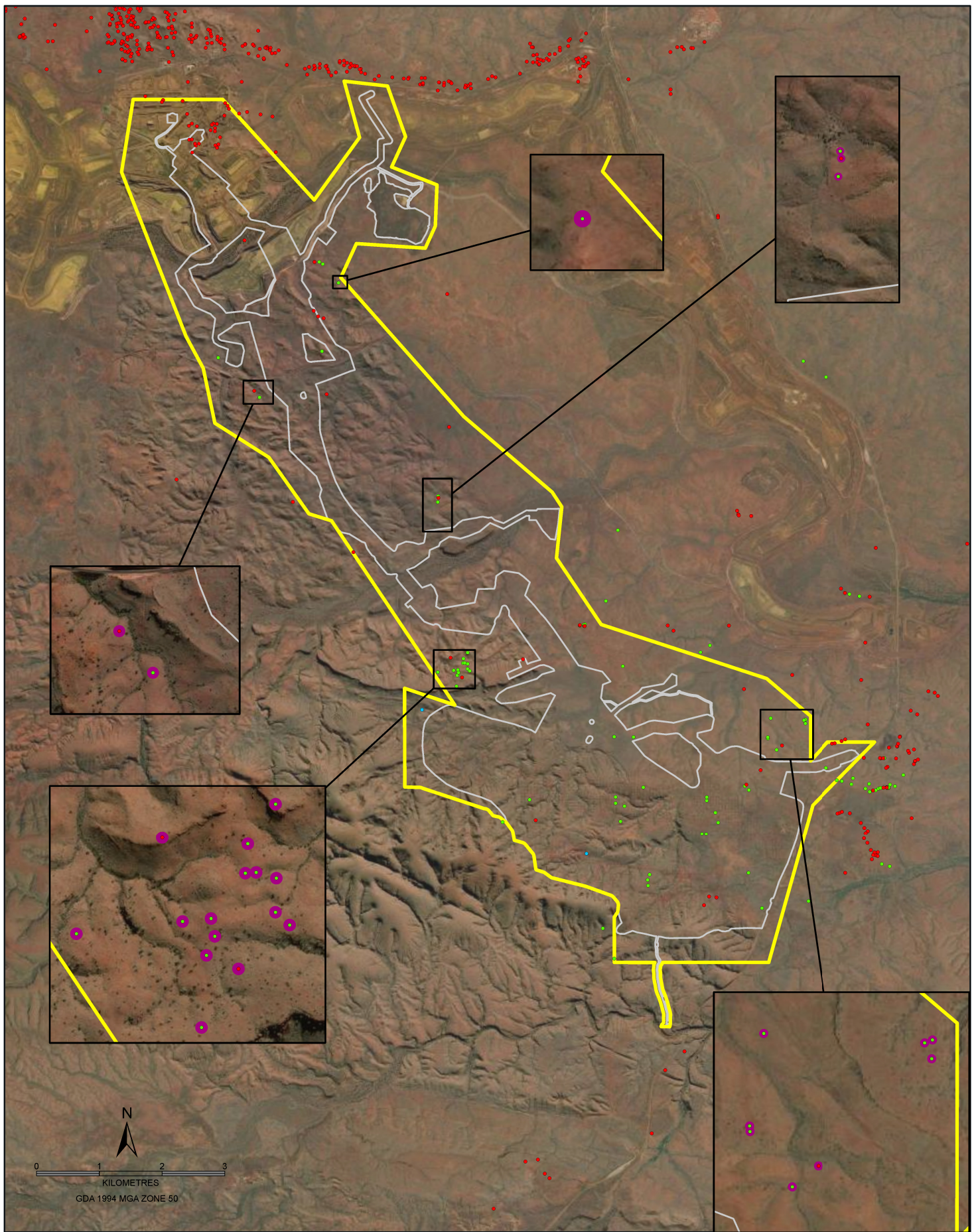
**BHP**

**PUBLIC**

**MINISTERS NORTH  
MANAGEMENT OF CATEGORY 3  
GHOST BAT CAVES**

**WAIO- PLANNING, TECHNICAL & ENVIRONMENT**

SCALE @ A4:	1:10,000	REQUESTOR:	PROJECTS	FIGURE:	1-5
DATE:	15/09/2025	PREPARED:	GEOMATICS	NO:	A1317-014 RevH
		REVIEWED:			



**Legend**

- Development Envelope (5,557 ha)
- Indicative Footprint (2,360 ha)
- Western Pebble-mound Mouse 10m Avoidance Area

**Western Pebble-mound Mouse Records**

- Individual (alive)
- Mound (active)
- Mound (inactive / recently inactive)

**BHP**

**PUBLIC**

**MINISTERS NORTH  
WESTERN PEBBLE-MOUND  
MOUSE RECORDS**

WAIO PLANNING, TECHNICAL & ENVIRONMENT

SCALE @ A4:	1:80,000	REQUESTOR:	PROJECTS	FIGURE:	<b>1-6</b>
DATE:	15/09/2025	PREPARED:	GEOMATICS	NO:	<b>A1317-058_RevE</b>
		REVIEWED:			



**Coordinates (MGA Zone 50 K):**  
 716963 mE, 7476116 mN

**Entrance:** Wide open entrance  
 (3.5 m high x 2.5 m wide)

**Orientation:** East

**Internal:** Four internal chambers  
 (Main chamber 2.5 m high x 7 m  
 wide x 25 m deep, first right  
 chamber 1.8 m high x 2 m wide  
 x 18 m deep, second right  
 chamber 2 m high x 2 m wide  
 x 6+ m deep, End chamber 5+ m  
 high x 6 m wide x 6 m deep with  
 a continued cavity 5+ m deep  
 x 0.3 m high)

**Notes:** Three constrictions with  
 no observable end.

**Conditions:** Ghost bats  
 previously recorded, Ghost Bat  
 scat recorded (50-100), bat  
 smell, raised humidity,  
 microbats present

**Figure 1-7: Ghost Bat Category 3 Roost CMN-02 (Photograph and Description)**

Source: Astron Environmental (2025)



**Coordinates (MGA Zone 50 K):**  
 717230 mE, 7475451 mN

**Entrance:** Narrow entrance  
 (1.3 m high x 2 m wide)

**Orientation:** South-east

**Internal:** One internal chamber;  
 1.9 m high x 5 m wide x 12 m  
 deep

**Conditions:** Ghost Bat scats  
 present (50-100), bat smell,  
 raised humidity,  
 microbats present.

**Figure 1-8: Ghost Bat Category 3 Roost CMNY-05 (Photograph and Description)**

Source: Astron Environmental (2025)