

Legend

- | | | |
|---------------------------------|---------------------------|----------------------|
| Development Envelope (5,557 ha) | Cleared/ Disturbed | Minor Drainage Line |
| Indicative Footprint (2,360 ha) | Drainage Area/ Floodplain | Mulga Woodland |
| Surface Water Features | Gorge/ Gully | Sand Plain |
| Bat Cave Sites | Hardpan Plain | Sandy/ Stony Plain |
| Habitat Type | Hillcrest/ Hillslope | Stony Plain |
| Basalt Outcrops | Ironstone Outcrops | Undulating Low Hills |
| Boulders/ Rockpiles | Major Drainage Line | Wetland |
| Breakaway/ Cliff | Medium Drainage Line | |

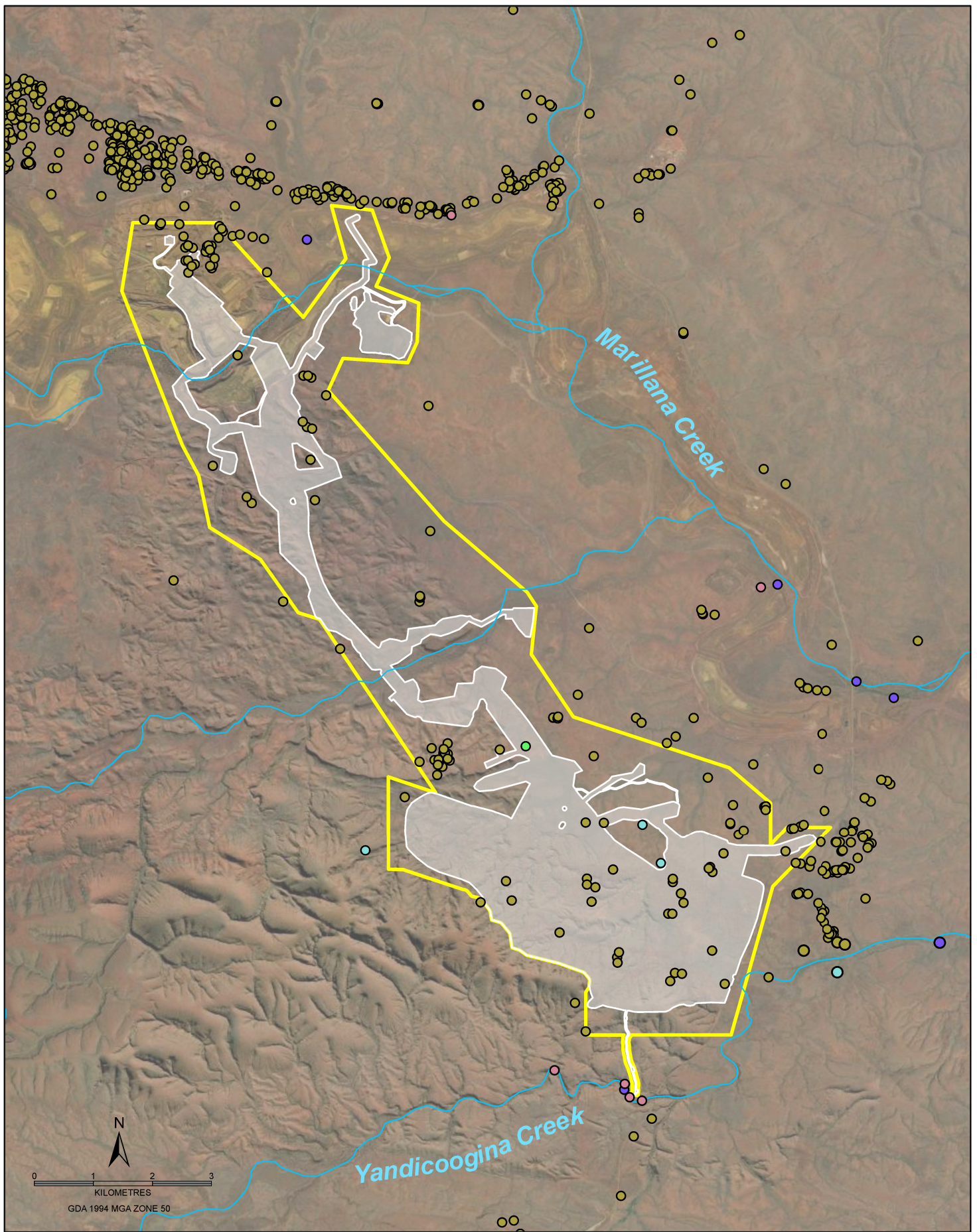


PUBLIC

**MINISTERS NORTH
FAUNA HABITAT**

WAIO PLANNING, TECHNICAL & ENVIRONMENT

SCALE @ A4: 1:80,000 REQUESTOR: PROJECTS FIGURE: 1-3
 DATE: 15/09/2025 PREPARED: GEOMATICS
 REVIEWED: NO: A1317-037 RevG



Legend

- Development Envelope (5,557 ha)
- Indicative Footprint (2,360 ha)
- Watercourse

BC Act and DBCA Priority Listed Vertebrate Taxa

- *Dasyurus hallucatus* (Endangered)
- *Liasis olivaceus subsp. barroni* (Vulnerable)
- *Macroderma gigas* (Vulnerable)
- *Falco peregrinus* (Other Specially Protected Fauna)
- *Pseudomys chapmani* (P4)

BHP

PUBLIC

**MINISTERS NORTH
CONSERVATION SIGNIFICANT
FAUNA**

WAIO PLANNING, TECHNICAL & ENVIRONMENT

SCALE @ A4: 1:85,000 REQUESTOR: PROJECTS FIGURE: 1-4
 DATE: 15/09/2025 PREPARED: GEOMATICS
 REVIEWED: NO: **A1317-038 RevG**