



# Ministers North

## Derived Proposal Ministerial Statement 1105

### Proposal Content Document

September 2025  
Version 1.0

#### Document amendment record

Version	Section/page	Version description	Key changes	Date
0a	All	Draft for internal review	N/A	
1	All	Final revision submitted to EPA	N/A	15/09/2025

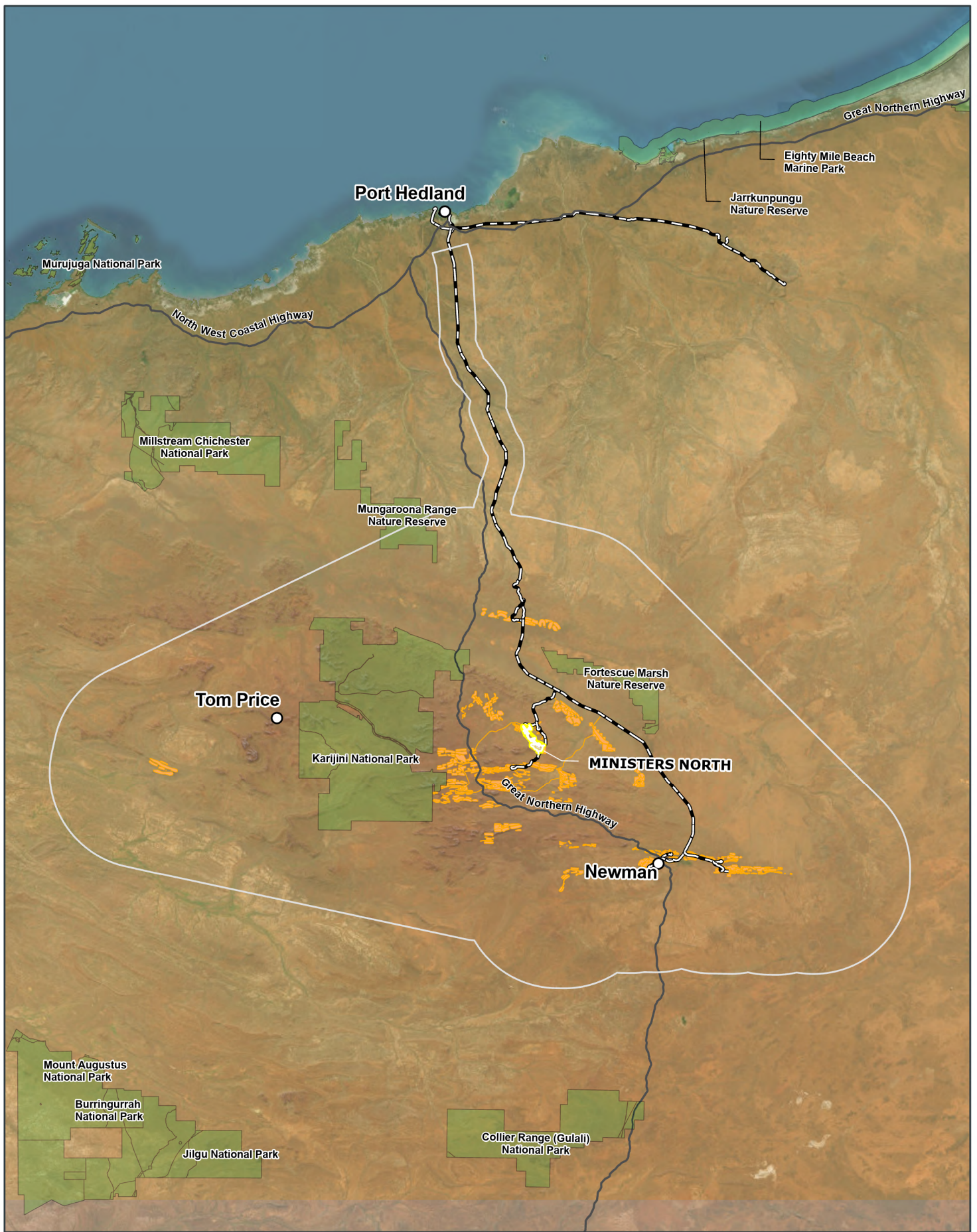
**Table 1: General proposal content description**

<b>Proposal title</b>	Ministers North (Derived Proposal)
<b>Proponent name</b>	BHP Iron Ore Pty Ltd
<b>Short description</b>	<p>The Proposal is for iron ore mining operations at Ministers North, as a Derived Proposal considered as part of the BHP Pilbara Expansion Strategic Proposal under the Ministerial Statement 1105 approval (Figure 1).</p> <p>The Derived Proposal comprises a Development Envelope of 5,556.6 hectares (ha) and an Indicative Footprint of up to 2,360 ha with clearing of up to 1,848 ha of native vegetation.</p> <p>The location and extent of the Derived Proposal is identified by Figure 2. The Derived Proposal is located approximately 15 km south-east of BHP's existing Yandi Mining Operations (Yandi).</p> <p>The Derived Proposal includes the following main elements and activities:</p> <ul style="list-style-type: none"> <li>• Above water table mining in open mine pits</li> <li>• Stockpiling of ore on a Run of Mine (RoM) pad prior to transport of ore to Yandi</li> <li>• A Central Overburden Storage Area (OSA) and in-pit backfilling of the mine pits</li> <li>• Infrastructure corridor connecting Ministers North to Yandi</li> <li>• A new primary crusher at Yandi to accommodate the Brockman-type ore supply</li> <li>• Mine access roads and tracks to connect various mining infrastructure</li> <li>• Borrow pits, laydown areas, stockpiles (topsoil, subsoil, vegetation)</li> <li>• Surface water management infrastructure</li> <li>• Water supply pipelines (including requirement for pump stations and turkey's nests)</li> <li>• Ground disturbance and earthworks</li> <li>• Drilling and blasting</li> <li>• Associated infrastructure to support the mine construction and operation, including but not limited to administration, workshops, warehouse/storage, vehicle parking, vehicle and equipment wash-down, fuel and explosives storage, power generation and transmission lines, services infrastructure, pipelines, wastewater treatment, and communications.</li> <li>• Rehabilitation and decommissioning activities.</li> </ul>

**Table 2: Proposal content elements**

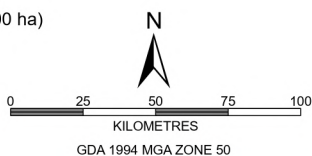
Proposal element	Location / description	Maximum extent, capacity or range
<b>Physical elements</b>		
Mine and associated infrastructure for construction and operation	Figure 2	Indicative Footprint of up to 2,360 ha, including up to 1,848 ha of native vegetation clearing, within a 5,556.6 ha Development Envelope.
<b>Operational elements</b>		
Production capacity (crushed ore)		Up to 25 million tonnes per annum (Mtpa)
Overburden storage (ex-pit storage)		Up to 30 Mtpa, cumulative of 160 Mt.
Water supply		Water supply will be sourced from other users including BHP operations and third parties.
Max pit depth (at closure)		569mAHD (minimum 5m separation from groundwater table)
<b>Proposal elements with greenhouse gas emissions</b>		
<b>Peak emissions</b>		
Mining and associated activities (including land use change)	Scope 1 – 123,524 t CO <sub>2</sub> -e annual emissions (maximum)	
Electricity demand	Scope 1 – 31,288 t CO <sub>2</sub> -e annual emissions (maximum)	
Rail transport	Scope 1 – 38,052 t CO <sub>2</sub> -e annual emissions (maximum)	
Electricity demand <sup>1</sup>	Scope 2 – Nil	
Downstream emissions (including port, iron ore shipping and steel making)	Scope 3 – 27,075,066 t CO <sub>2</sub> -e annual emission (maximum)	
<b>Annual average emissions</b>		
Mining and associated activities (including land use change)	Scope 1 – 101,735 t CO <sub>2</sub> -e annual emissions (average) for a total of 1,538,460 t CO <sub>2</sub> -e over the operational life of the Derived Proposal	
Electricity demand	Scope 1 – 25,226 t CO <sub>2</sub> -e annual emissions (average) for a total of 378,388 t CO <sub>2</sub> -e over the operational life of the Derived Proposal	
Rail transport	Scope 1 – 30,691 t CO <sub>2</sub> -e annual GHG emissions (average) for a total of 460,358 t CO <sub>2</sub> -e over the operational life of the Derived Proposal	
Downstream emissions (including port, iron ore shipping and steel making)	Scope 3 – 21,837,456 t CO <sub>2</sub> -e annual GHG emissions (average) for a total of 327,561,834 t CO <sub>2</sub> -e over the operational life of the Derived Proposal	
<b>Rehabilitation</b>		
Rehabilitation (as a component of mine closure) will be undertaken for all cleared land areas excluding the pit voids at closure (which are unable to be rehabilitated due to the consolidated rock substrate). Rehabilitation works will be completed progressively where practicable.		
<b>Commissioning</b>		
Commissioning will be undertaken in accordance with the requirements of approvals under the <i>Environmental Protection Act 1986</i> .		
<b>Decommissioning</b>		
Mine closure for the Derived Proposal will be implemented in accordance with a Mine Closure Plan (MCP). The overarching implementation objective of the MCP is to ensure the site is decommissioned and rehabilitated to be safe, stable and non-polluting and in an ecologically appropriate and sustainable manner to allow for a post-mining land use.		

<sup>1</sup> In the context of BHP's Strategic Assessment boundary, emissions which occur outside of the Development Envelope associated with Yarnima Power Station and Rail transport operations are identified as Scope 1 emissions



**Legend**

- Development Envelope (5,557 ha)
- Indicative Footprint (2,360 ha)
- Strategic Proposal Area (7,650,074 ha)
- Strategic Proposal Full Conceptual Development Scenario (98,500 ha)
- Conservation Area
- Townsite
- Major Roads
- Rail (BHP)



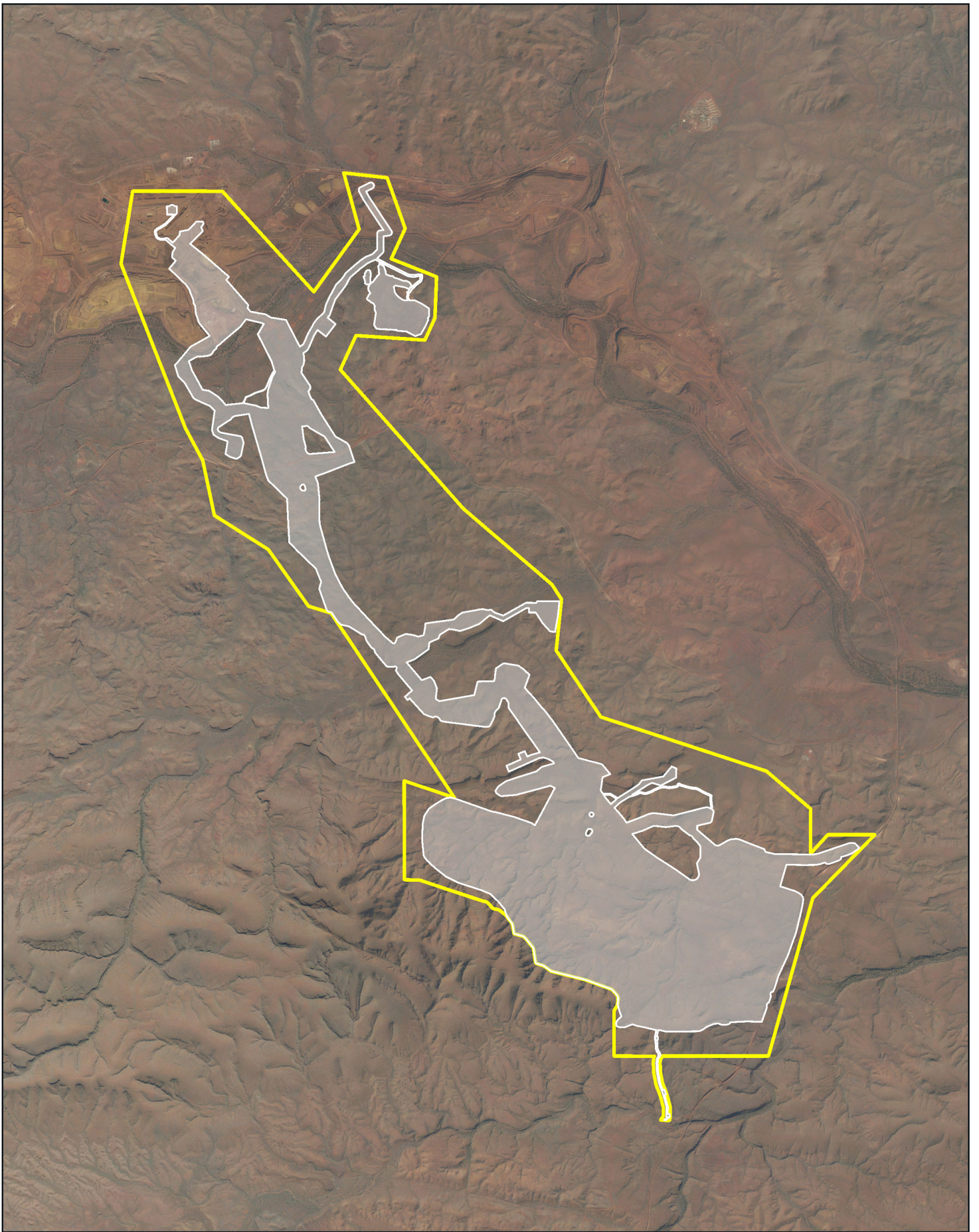
**BHP**

**PUBLIC**

**MINISTERS NORTH  
STRATEGIC PROPOSAL AND  
MINISTERS NORTH DERIVED PROPOSAL**

**WAIO PLANNING, TECHNICAL & ENVIRONMENT**

SCALE @ A4:	1:2,607,553	REQUESTOR:	PROJECTS	FIGURE:	<b>1</b>
DATE:	27/08/2025	PREPARED:	GEOMATICS	NO:	<b>A1317-007 RevF</b>
		REVIEWED:			



**Legend**

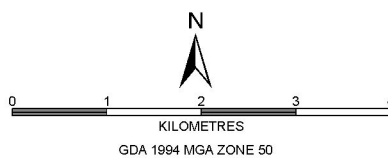
- Development Envelope (5,557 ha)
- Indicative Footprint (2,360 ha)

**BHP**

**PUBLIC**

**MINISTERS NORTH  
DEVELOPMENT ENVELOPE  
AND INDICATIVE FOOTPRINT**

**WAIO PLANNING, TECHNICAL & ENVIRONMENT**



SCALE @A4:	1:80,000	REQUESTOR:	PROJECTS	FIGURE:	2
DATE:	27/05/2025	PREPARED:	GEOMATICS	NO:	A1317-001 RevD
		REVIEWED:			