



Southdown Joint Venture (SDJV)
Southdown Magnetite Mine
Pre-referral Stakeholder and Community
Engagement Report

December 2022

Table of Contents

Executive Summary	2
Project Background	2
Stakeholder and Community Engagement Process	2
Key Findings	3
Next Steps	4
Introduction	5
Policy Context.....	5
Purpose of this Report.....	6
Project Background	7
Project Overview.....	7
Project Stages and Timeframes	7
Project Components	7
Community Context	9
Social Risks and Opportunities	10
Stakeholder Identification and Analysis	11
Stakeholder and Community Engagement	13
Engagement Purpose and Objectives	13
Level of Engagement.....	14
Stakeholder and community engagement approach	15
Stakeholder and Community Feedback	25
Evaluation	35
Community Drop-in Information Sessions	35
Continuous Improvement.....	35
Next Steps	37

Appendix A – Stakeholder and Community Engagement Plan

Appendix B – Stakeholder and Community Engagement Register

Prepared by	Vivian Warren
Reviewed by	Glenda Stirling, Michael Everitt
Date	December 2022
Version	Final

Executive Summary

Project Background

The Southdown Magnetite Project is a joint venture between Grange Resources (70%) and SRT Australia Pty Ltd (30%) – this partnership is known as the Southdown Joint Venture (SDJV).

Grange Resources Limited (Grange), on behalf of SDJV, is proposing to develop the Southdown Magnetite Project which involves the construction and operation of an open pit magnetite mine located approximately 90 kilometres east-northeast of Albany, and 10 kilometres south-west of Wellstead in the Great Southern region of Western Australia.

Planning and preparation for the Southdown project has spanned a number of years. The project completed a Definitive Feasibility Study (DFS) in 2012 and was granted environmental approvals by the Western Australian government under the *Environmental Protection Act 1986* (EP Act) and by the federal government under the *Environment Protection and Biodiversity Conservation Act 1999* (EPBC Act).

Since these approvals were granted, Grange completed an updated Pre-Feasibility Study (PFS) in February 2022. The PFS proposed a scaled project start-up development option based on a nominal production rate of 5 million tonnes per annum (Mtpa) of magnetite concentrate, largely within the area that has already obtained environmental approvals for development. Grange announced that it would proceed with a Definitive Feasibility Study (DFS) for the 5 Mtpa option, with technical studies completed in late 2022. These project modifications require further environmental approvals under the EP Act and possibly the EPBC Act, including a new environmental approval for the transshipping component of the project to be obtained by the Southern Ports Authority.

Stakeholder and Community Engagement Process

A stakeholder and community engagement process was designed to inform stakeholders and the community of the proposed modifications to the project and provide an opportunity to provide feedback, ask questions, raise issues or opportunities and have their feedback considered. The engagement process considered the needs of the identified stakeholders and community members, was informed by previous rounds of engagement and feedback and underpinned by the International Association for Public Participation's (IAP2) [Core Values](#) and [Public Participation Spectrum](#).

The stakeholder and community engagement process involved:

- Having a presence in the local community with a project office in Albany;
- Information sessions at Manypeaks, Wellstead and Albany;
- Meeting with local landowners and sensitive receptors surrounding project infrastructure;
- Aboriginal Traditional Owner engagement to provide an update on the project and conduct ethnographic and archaeological heritage surveys;

- Working group with key state and local government agencies;
- Meetings with local government elected members, local and federal members of parliament, and special interest groups;
- Letters, emails and phone calls to stakeholders and community members;
- Attendance at local technical forums:
- Investment in community initiatives and attendance at community events; and
- A range of communications including regular updates on the project webpage, media articles, social media, letterbox drops and a series of information sheets.

Key Findings

Overall, stakeholders and the community are supportive of the project and the potential economic development it may bring to the local area and the region. Community members have requested information about opportunities to work and/or provide services for the mine. Questions and concerns related primarily to areas such as environmental approvals, direct impacts on landowners, water supply and transshipping as follows:

- **Mine site** – Concerns raised by some immediate neighbours surrounding the mine site about dust, noise, property values, and environmental impacts and requested information about the extent of impacts and mitigation measures. The project team will be meeting with landowner in December 2022 and early 2023 to discuss the outcomes of the impact studies, answer questions and discuss mitigation measures in greater detail. These will be reported in the assessment phase report. One resident leasing SDJV property would like to know if their lease will be extended.
- **Port operations** – Concerns raised by some immediate neighbours surrounding the Port operations about dust, noise and odour impacts on their properties and requested information about the proposed mitigation measures. Landowners have been encouraged to contact the Project Office to discuss any concerns in greater detail. Further information about the impact studies will be provided in the next round of engagement and reported in the assessment phase report. Residents would like to be kept informed of additional detail about the design of the vessels used for transshipping and how the transfer of product would occur. Further descriptions, images, and example videos will be compiled to provide further detail.
- **Groundwater** – Concerns raised by some about the impact of groundwater abstraction on the environment and surface aquifers. Detailed studies and core samples were used to demonstrate the minimal impacts on the environment as a result of groundwater extraction. Further, meetings will be held with local landowners to discuss the studies, management measures and any issues or concerns in greater detail and reported in the assessment phase report.
- **Borefields**– Concerns have been raised about biosecurity issues with accessing properties and risk of fires from Borefield powerlines. In response to these concerns,

SDJV have committed to bury new powerlines and include biosecurity measures in access agreements.

- **Aboriginal Heritage** – Ongoing engagement with SWALSC, Albany Heritage Reference Group and Aboriginal Traditional Owners throughout the life of the project, including ethnographic and archaeological surveys. Additional Aboriginal ethnographic and archaeological surveys have been scheduled for January and February 2023 to cover changes to the mine site layout, minor changes to associated pipelines and roads, the proposed borefield disturbance footprint, and the realignment of some sections of the slurry / return water pipeline corridor, and new slurry emergency storage area, pump station and pipelines connecting to the approved slurry and return water pipelines. Consultation will be ongoing, including with the new regional corporation under the South West Land Settlement once the new group is established.

An updated report will be issued for the environmental assessment phase to outline the additional engagement undertaken, the feedback received and actions taken in response to stakeholder and community feedback.

Next Steps

The outcomes of this report will be used to guide project decision-making to manage the known or perceived social and community impacts of the project and enhance the opportunities and benefits.

The SDJV will continue to liaise closely with all stakeholders, authorities, and the local community during the next phase of the project and will continue to adapt the engagement strategy to respond to the needs of stakeholders and the community.

Introduction

The Southdown Magnetite Project is a joint venture between Grange Resources (70%) and SRT Australia Pty Ltd (30%) – this partnership is known as the Southdown Joint Venture (SDJV).

Grange Resources Limited (Grange), on behalf of SDJV, is proposing to develop the Southdown Magnetite Project which involves the construction and operation of an open pit magnetite mine located approximately 90 kilometres east-northeast of Albany, and 10 kilometres south-west of Wellstead in the Great Southern region of Western Australia.

Planning and preparation for the Southdown project has spanned a number of years. The project completed a Definitive Feasibility Study (DFS) in 2012 and was granted environmental approvals by the Western Australian government under the *Environmental Protection Act 1986* (EP Act) and by the federal government under the *Environment Protection and Biodiversity Conservation Act 1999* (EPBC Act).

Since these approvals were granted, Grange completed an updated Pre-Feasibility Study (PFS) in February 2022. The PFS proposed a scaled project start-up development option based on a nominal production rate of 5 million tonnes per annum (Mtpa) of magnetite concentrate, largely within the area that has already obtained environmental approvals for development. Grange announced that it would proceed with a Definitive Feasibility Study (DFS) for the 5 Mtpa option, with technical studies completed in late 2022. These project modifications require further environmental approvals under the EP Act and possibly the EPBC Act, including a new environmental approval for the transshipping component of the project to be obtained by the Southern Ports Authority.

A key commitment of Grange's Environment, Social and Governance (ESG) Framework is to work with stakeholders and the community in the planning, implementation and operation of its projects as well as delivering community benefits, including employing local people to work and service the mine, supporting local and regional economic development and investing in community initiatives.

Policy Context

Grange is committed to engaging with stakeholders and the community to ensure there is awareness of proposed and existing operations and methods in place for stakeholders to raise any issues or concerns with projects, and proactive engagement is undertaken to build relationships, address concerns and document interactions.

The [Environmental Protection Authority](#) (EPA) also requires proponents to engage with stakeholders and community members that may be impacted or interested in a project as part of the environmental approvals process. The application should demonstrate that adequate and appropriate engagement has been conducted leading up to its submission and how this engagement will continue to be undertaken throughout the life of the project. It is important to note that the objective of the EPA is to protect the environment, which includes the potential impacts on human health and social surroundings. Furthermore, the engagement undertaken for the EPA referral will be expanded to assist with addressing the stakeholder engagement requirements for obtaining secondary approvals from the

Department of Mines, Industry Regulation and Safety (DMIRS). It will also contribute to the overall engagement of the project as it progresses through its different phases.

Further, the EPBC Act approval process can include a public comment period that requires the proponent to address submissions as part of the assessment process.

Purpose of this Report

This Stakeholder and Community Engagement Report outlines the stakeholder and community engagement activities undertaken to update the community on the project, inform them of the proposed modifications, and obtain their feedback on the project's design.

The report outlines the following:

- Engagement purpose and objectives;
- Engagement and communication process implemented; and
- Key findings of the engagement process and how the feedback has shaped and/or influenced the project.

The report provides a snapshot of the stakeholder and community engagement process undertaken, and the feedback received to date for the environmental referral process. Stakeholder and community engagement will continue throughout the life of the project, including the environmental approvals and assessment process. An updated report will be issued for the environmental assessment phase to outline the additional engagement undertaken, the feedback received and actions taken in response to stakeholder and community feedback.

The outcomes of this report will be used to guide project decision-making to manage the known or perceived social and community impacts of the project and enhance the opportunities and benefits. It will also be used to inform the stakeholder and community engagement for the project, including outreach and community investment, moving forward.

Project Background

Project Overview

The Southdown Magnetite Project involves the construction and operation of an open pit magnetite mine located approximately 90 kilometres east-northeast of Albany, and 10 kilometres south-west of Wellstead in the Great Southern region of Western Australia.

The Southdown magnetite deposit is approximately 12 kilometres long, with 6 kilometres of this included in the current study. It contains over 1.2 billion tonnes of high-quality mineral resources, including 388 million tonnes (Mt) of ore reserves. The magnetite ore will be mined, crushed, ground, screened and magnetically separated to produce a magnetite concentrate. With an initial mine life of 28 years, it is anticipated that around 5 Mt of magnetite concentrate will be exported to international markets each year.



Project Stages and Timeframes

The stages and timeframe for the project are outlined in the table below.

Project Stages	Indicative timing
Exploration	Complete
Environmental approvals	Q1 2024
Pre-Feasibility (PFS – plus or minus 30% accuracy)	Complete – Feb 2022
Definitive Feasibility (DFS – 10 to 15% accuracy)	2022
Planning and design	2022 – 2023
Construction	2024 – 2025
Operations	28 years
Decommissioning, closure and post-closure monitoring and maintenance	Following mine closure

Project Components

The Southdown Magnetite Project is proposed to be a pit-to-port operation involving:

	The construction and operation of an open cut magnetite mine and concentrator for producing magnetite concentrate at the mine site, near Wellstead.
	A 110km underground slurry pipeline to transport the magnetite concentrate from the mine site to the Port of Albany.



Once the slurry reaches the Port, it will be dewatered and stored in a storage shed ready for shipping.



The recycled water from the dewatering process will be pumped back to the mine site in a return water pipeline following the same alignment as the slurry pipeline.



When the concentrate is ready for shipping, it will be loaded on to a smaller transshipping vessel (TSV) via conveyors and a shiploader and transported by the TSV to be loaded onto larger vessels in King George Sound. This process is known as transshipping.



Water for the construction and operation of the mine is anticipated to be sourced from a mix of recycled wastewater from the Water Corporation's Wastewater Treatment Plant, pit dewatering water, rainfall harvesting and groundwater from local borefields proposed at Wellstead and Manypeaks.



Electricity will be supplied to the mine via a transmission line from Collie to the mine site to connect to the SWIS to access a component of renewable energy. The transmission line is being explored by Alinta, who will lead and manage all landowner access agreements, broader communications and engagement and environmental approvals associated with the electricity supply.

Construction

Construction is expected to take 18-24 months to complete. Activities will be undertaken across all project areas according to a detailed schedule to be developed by the responsible contractor. The construction activity will result in traffic increases in the area due to workforce movement and truck delivery of materials and equipment.

Operation

The project will operate 24 hours per day, 365 days per year. A workforce of around 300 people (to be determined during the study period) will operate the mine, processing and export facilities. Water supply and pipelines will be monitored and maintained as required. Traffic will reduce substantially from the construction phase, with routine workforce movement, mostly on a roster basis, and routine deliveries of consumables.

Community Context

Wellstead

The mine site will be located approximately 90 kilometres east-northeast of Albany, and 10 kilometres south-west of Wellstead in the Great Southern region of Western Australia. A groundwater borefield is also proposed in this area.

Wellstead is a small Western Australian rural town located within the local government area of the City of Albany in the Great Southern Region. It is located approximately 381 km from the WA capital city of Perth and 100 km from Albany. Wellstead covers an area of 431.839 square kilometres and has a recorded population of 78 residents, with 47% male and 52% females and a median age of 39 (according to the ABS state suburb, 2021).

Key industries of employment for the Wellstead community include agriculture, forestry and fishing, and retail trade. (ABS Community Profile, 2021). The areas surrounding Wellstead produce wheat and other cereal crops.

Wellstead has the following community facilities:

- Wellstead Community Resource Centre - a not-for-profit, community-managed organisation servicing the rural community by providing workshops, job and training opportunities. Wellstead General Store
- “The Whisper” Coffee Shop
- Wellstead Bush Park Camp spot
- Wellstead Primary School
- CBH receival point

Manypeaks

A borefield to obtain some of the water required for use on the mine site is proposed for the Manypeaks Area.

Manypeaks is a town located 434 km south-east of Perth and 38 km north-east of Albany in the Great Southern region of Western Australia. The township is on the South Coast Highway close to the intersection with Howie Road. The closest towns to Manypeaks are on the South Coast Highway, Albany to the south-west and Wellstead to the east.

It has a recorded population of 149 people, with a median age of 38. Key industries of employment for the Manypeaks community include agriculture, forestry and fishing, health care/social assistance and construction (ABS Community Profile, 2021).

Manypeaks has the following community facilities:

- Manypeaks Store
- Manypeaks Primary School
- Manypeaks Community and Recreation Centre
- Proctor Oval

Albany

Once the concentrate reaches the Port of Albany via the slurry pipeline, it will be filtered and stored ready for shipping. The excess water will be pumped back to the mine site in a return water pipeline. The project is proposing the use of transshipment to export the concentrate product. This involves a smaller transshipment vessel loaded at Berth 5, which then transports and loads the product onto a cape size vessel anchored in King George Sound.

The facilities proposed to be established at the existing Berth 5 at Albany Port to enable these operations to include administration buildings, a dewatering plant, concentrate storage, and above water ship loading facilities. The existing approval for these same facilities at Berth 7 will be retained to cater for potential future project expansion.

Albany is a port city in the Great Southern region in the Australian state of Western Australia, 418 kilometres southeast of Perth, in the local government area of the City of Albany. The city centre is at the northern edge of Princess Royal Harbour, which is part of King George Sound. The central business district is bounded by Mount Clarence to the east and Mount Melville to the west. (Wikipedia, 2022).

Albany has a recorded 38,753 residents, with around 51% male and 49% female at a median age of 45. Key industries of employment for the Albany community include construction, agriculture, fishing and forestry, retail trade and manufacturing. (ABS Community Profile, 2021).

Social Risks and Opportunities

A thorough review of previous stakeholder and community engagement and lessons learnt was undertaken as a first step in identifying the potential social risks and opportunities with the proposed modifications to the project. The project was originally assessed by the EPA and approved by the Minister for the Environment in 2009 under the EP Act with stakeholder consultation undertaken during this process.

Following a desktop review and with consideration of the findings, a social risks and opportunities assessment was undertaken as part of the engagement planning for the environmental approvals process (refer to Appendix A). A summary of the key social risks and management measures is outlined below:

- Ensuring the community is provided with information to prevent misinformation or a lack of understanding about the project and environmental assessment process and legislation.
- Coordinating the stakeholder and community engagement process for the Southern Ports Authority transshipping component of the project and all other components of the SDJV project.
- Provide sufficient information and opportunities for asking questions and discussing issues or concerns to increase community, stakeholder and political support and confidence in the project.
- Proactively engage Aboriginal Traditional Owners and knowledge holders to identify and manage Aboriginal heritage. *This will be undertaken by an Aboriginal Engagement and Heritage consultant and reported in the Aboriginal Heritage report.*

- During construction of the mine site and associated infrastructure, mitigate the potential impacts on neighbours, local residents and through traffic on the South Coast Highway and other local roads.
- During the operation of the mine minimise visual impacts, dust emissions, noise and vibration.
- Landowner access to the slurry and return water pipelines registered easement area during construction will be negotiated. Once construction is complete the landowner will have access to the full area for farming activities with restriction on any construction over the registered easement.
- Landowners and surrounding farmers in the vicinity of the borefields may be concerned that the drawdown of water by SDJV could lead to environmental impacts and a lack of available water for their crops and trees.
- Stakeholder concerns regarding the impact on the environment of project changes, leading to community outrage and environmental activism against the project.

A summary of the key opportunities identified was:

- Supporting local and regional economic development and investing in community initiatives.
- Supporting Aboriginal engagement and employment opportunities.
- Employing local people to work and service the mine.

The primary management strategy for managing the risks and enhancing opportunities was the design and implementation of a proactive stakeholder and community engagement strategy. Stakeholder and community feedback has informed project decisions to avoid or minimise potential adverse impacts to stakeholders and the community and enhance/further define opportunities wherever possible. Some examples include:

- Reconfiguring the proposed borefield layouts after taking into account landowner preferences
- Adjustment of alignment of borefield pipelines to adhere with landowner preferences
- Siting of the proposed accommodation village to enhance the amenity of the village itself, and ensure it's on property already owned by SDJV

Stakeholder Identification and Analysis

A thorough identification process was undertaken to understand the stakeholders and community members potentially interested or impacted by the project, the reason for their interest and what matters most to them. Stakeholders that may be able to add value to the project due to their tacit knowledge, differing perspectives, connection to the community or any other reason were also identified.

The stakeholder matrix mapped the following for both internal and external stakeholders:

- Stakeholder type (i.e., State Government, Environmental Group)

- Stakeholder group (i.e., Environmental Protection Authority, Wellstead Progress Association)
- The reason for their interest in the Project
- The level of interest and influence on the Project
- A summary of the proposed engagement and communication methods relevant to that stakeholder.

The stakeholder and community members with the highest level of interest in the project were identified as:

- The City of Albany, the locality of Wellstead, and other surrounding regional communities
- Community members in the immediate surrounds of the mine site and associated project infrastructure (slurry and return water pipelines, bore fields, Port of Albany operations and transhipping, and 3rd party powerline)
- The population within the local shires who may benefit from economic development opportunities and/or be impacted by the construction and operations of the project
- Aboriginal groups with an interest in native title, cultural heritage and economic development
- Environmental and other special interest groups with an interest in the environmental impacts of the project
- Regulators and other state government agencies
- Shareholders interested in maintaining the reputation of the organisation
- Local and regional media.

For the detailed stakeholder identification and analysis refer to the Stakeholder and Community Engagement Plan, Section 3 – Stakeholder Analysis in Appendix A.

Stakeholder and Community Engagement

An engagement process was designed to best meet the needs of the identified stakeholders and community members, using methods that would most enable their participation. The engagement process has comprised the following steps:

- Conducting a desktop review and discussions with project team members to understand the background of the project and past engagement undertaken and community feedback;
- Detailed understanding of the local and regional communities in which the project and associated infrastructure will be constructed and operated;
- Understanding the project stages and timeframe, including elements of the project that stakeholders and the community can influence;
- Conducting a thorough stakeholder identification and analysis process, including identification of sensitive receptors adjacent to the mine;
- Conducting a social risk and opportunity analysis, including an outrage assessment;
- Determining the most appropriate engagement methods to engage the identified stakeholders and community members;
- Engaging with stakeholders and the community including providing information about the project;
- Documenting the engagement activities undertaken, the feedback received and the response to the feedback;
- Providing feedback to the community about the response to the feedback including any changes to project decisions; and
- Reviewing the engagement process at key intervals to ensure it continues to meet the needs of stakeholders and the community.

The Stakeholder and Community Engagement Plan (Appendix A) was informed by previous rounds of engagement and feedback and underpinned by the International Association for Public Participation's (IAP2) [Core Values](#) and [Public Participation Spectrum](#). Throughout 2022, the plan was maintained as a living document and evolved in response to emerging information and community feedback.

Engagement Purpose and Objectives

The purpose of the stakeholder and community engagement strategy during the project development phase was to enable individuals, groups and agencies potentially interested or affected by the project to provide feedback, ask questions, raise issues or opportunities and have their feedback considered. This assists in proactively identifying and managing potential issues or opportunities as early as possible in the project.

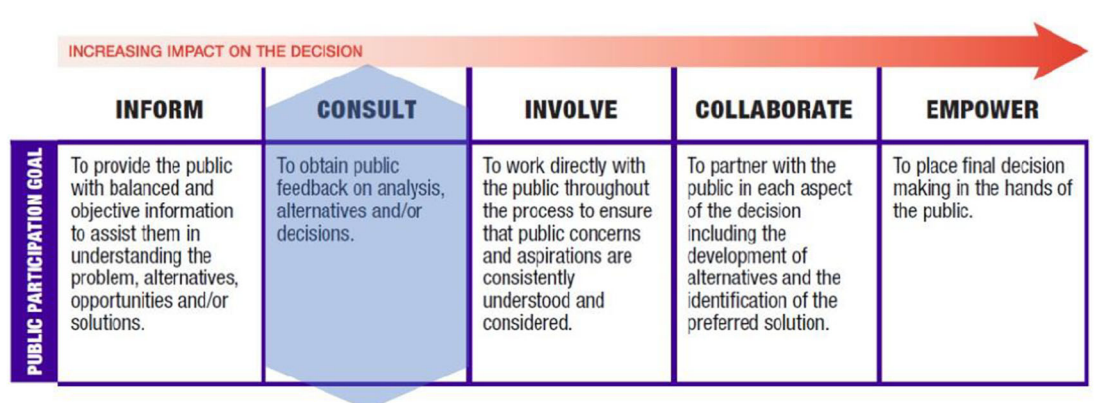
Specifically, the engagement process aimed to:

- Provide stakeholders and the community with an update on the project and keep them updated as the project progresses;
- Update targeted stakeholders on the relevant science before conducting field studies (such as, expected groundwater drawdown levels, noise, dust and visual studies at Albany Port);
- Negotiate land access agreements and Albany Port approvals;
- Align the approach for engagement between the different project components;
- Obtain input to the environmental primary and secondary approvals, including mine closure;
- Understand and mitigate potential social risks and enhance opportunities;
- Maintain a strong relationship with stakeholders and the community;
- Support the Southern Ports Authority in their engagement with stakeholders and the community for the transhipping component of the project; and
- Actively listen and respond to stakeholder and community feedback.

Level of Engagement

IAP2's Public Participation Spectrum outlines five levels for engaging the community and stakeholders, from simply informing them about a project (inform) to delegating the decision to them (empower).

Given the level of interest and impact of the project on stakeholders, and the purpose for engaging them, the overall level of engagement on the IAP2 Public Participation Spectrum that is most suitable is 'Consult'.



Source: IAP2 Public Participation Spectrum <https://iap2.org.au/resources/spectrum/>

Stakeholder and community engagement approach

The following table outlines the activities that were undertaken to engage stakeholders and the community during the PFS, DFS and as a key input to the environmental approvals for the proposed modifications to the Southdown Magnetite project. The key activities for engaging with stakeholders and the community has involved:

Timing	Method	Description	Purpose	Stakeholders
Ongoing – Monday to Friday business hours	Project Office in Albany	The project office was established in Albany for the duration of the project with dedicated Community Liaison Officers to allow stakeholders and community members to find out more about the project, ask questions or discuss any issues or concerns. Community members can drop in anytime during business hours from Monday to Friday without making an appointment (open door). The details of the site office are listed in the white pages. This provides a single point of contact for the project.	<ul style="list-style-type: none"> • Ensure there is a local presence • Provide opportunities for stakeholders and the local community to meet with the project team and learn more about the project. 	The Project Office received an average of 15 visits, calls and emails per week from local community members, businesses and stakeholder organisations.
Mar to Nov 22	Proposed Borefield - landowner meetings	Meetings were conducted with landowners within the borefields investigation areas to keep landowners informed of the project and provide opportunities for asking questions or discussing any issues or concerns. These meetings also focused on obtaining approval for land access, bore testing, exploring willingness to have the proposed borefields on their property and discussing the results of technical studies.	<ul style="list-style-type: none"> • Gain approval for additional bore testing on their site • Explore willingness to have borefields on their property • Inform landowners of the results of technical studies and provide opportunities for asking questions • Initiate discussions to obtain land tenure for borefields 	12 landowners were engaged (potential landowner site locations). 3 of these 12 properties have been identified as proposed borefields locations.

Timing	Method	Description	Purpose	Stakeholders
Sep to Oct 2022	Meetings with residents immediately surrounding the mine site	Meet with residents immediately surrounding the mine site to provide an update on the project and discuss changes to the mine site layout.	<ul style="list-style-type: none"> • Provide an update on the project • Discuss changes to the mine site boundary and layout 	Meetings with four residents immediately surrounding the mine site to provide an update on the project.
Dec 2022		Meet with sensitive receptors surrounding the mine site to discuss dust and noise studies undertaken. The Program Director, Dust and Noise expert, and Community Engagement Specialist will attend landowner meetings.	<ul style="list-style-type: none"> • Discuss impact assessment and provide landowners with an opportunity to ask questions and discuss any issues or concerns 	<p>Extended an invitation to the 13 sensitive receptors surrounding the mine site to meet and discuss dust and noise modelling.</p> <p>Met with four sensitive receptors surrounding the mine to provide an update on the project and discuss impact assessments.</p>
Feb 2022	Presentation to Port Community Consultative Committee (PCCC)	The SPA has a Port Community Consultative Committee (PCCC) which includes Port neighbours as representatives. A presentation about the project was made to the PCCC to provide an update on the project and provide an opportunity to ask questions and discuss any concerns.	<ul style="list-style-type: none"> • Provide an update on the project • Provide an opportunity to ask questions and discuss any concerns 	Members of PCCC – Southern Ports operates the PCCC in Albany consisting of members from the local community, the local Shire and City representatives and an elected independent Chair.
Dec 2022	Letterbox drop to residents near the Port	The Project Information Sheet and Transhipping Information Sheet were letterbox dropped to residents in the Port Buffer Zone, including Goode Beach and nearby	<ul style="list-style-type: none"> • Ensure residents surrounding the Port were aware of the project 	36 letterbox drops were made to residents surrounding the Port.

Timing	Method	Description	Purpose	Stakeholders
		<p>Albany residents and outlined contact details for further details and discussion about the project.</p> <p>Port neighbour visited the Project Office to discuss proposed operations at the Port. SDJV encouraged the resident to nominate for the PCCC and she subsequently advised that she had nominated and joined the committee.</p>	and provided details about how to find out more information and get in touch with the project team	Some immediate residents are also members of the PCCC.
<p>Oct 2021 Jan, Feb, May, Sep, and Oct 2022 Ongoing moving forward</p>	Southern Ports Authority meetings (and ongoing contact via phone and email)	Meetings with the Southern Ports Authority to discuss the project design and align the engagement process for the landside activities led by Grange and the transhipping activities led by SPA, in close partnership with Grange.	<ul style="list-style-type: none"> • Discuss proposed operations at the Port of Albany and transhipping • Progress all aspects of the Port component of the project including landside (Grange is the proponent) and waterside (SPA is the proponent). • Align stakeholder and community engagement for all components of the project. 	Southern Ports Authority – weekly meetings.
Nov 2022	Wellstead Whisper Notices	<p>Provided project updates via the Wellstead Whisper and encouraged the community to find out more about the project via the project office, phone/email and website. Invited the community to the information sessions.</p> <p>BBQ cards were also made available at the Wellstead Community Resource Centre, Albany Library and other local facilities.</p>	<ul style="list-style-type: none"> • Provide a project update • Invite the community to the information sessions 	50 Wellstead residents and businesses.
Oct 2022	Albany Advertiser Adverts	Invited the community to attend the information sessions.	<ul style="list-style-type: none"> • Provide a project update • Invite the community to the information sessions 	Albany and the region – average readership of

Timing	Method	Description	Purpose	Stakeholders
				more than 20,000 people.
Sep 2021 to Dec 2022	BBQ cards	Distributed BBQ cards to the public to inform them of the project and provide contact details to learn more about the project. These were distributed by project team members and contractors that interfaced with the public.	<ul style="list-style-type: none"> • Provide an overview of the project and contact details to find out more 	<p>500 cards have been distributed to consultants and contractors to hand out to landowners and community members when interfacing with the community about the project.</p> <p>Cards have been handed out at stakeholder meetings and events and left at local community facilities.</p>
Dec 2021 May 2022	Great Southern Development Commission Southdown Working Group (GSDC SWG)	<p>A working group made up of key government agencies was formed, and is coordinated by the Great Southern Development Commission, to ensure that key stakeholder organisations are informed of the project and have opportunities for providing input. Grange convenes meetings and presents to the group at key project milestones. Additionally, Grange has met with individual stakeholder organisations in between meetings as required to discuss specific details of the project or to inform the agency's staff of the project.</p> <p>The Great Southern Development Commission Southdown Working Group is made up of the following key agencies:</p> <ul style="list-style-type: none"> • Albany Chamber of Commerce and Industry 	<ul style="list-style-type: none"> • Provide regular updates on the project to key stakeholder organisations and obtain input on the project design 	Two meetings with the GSDC SWG made up of 13 key local and state government agencies with an interest/impact on the project.

Timing	Method	Description	Purpose	Stakeholders
		<ul style="list-style-type: none"> • City of Albany • Department of Biosecurity, Conservation and Attractions • Department of Jobs, Tourism, Science and Innovation • Department of Planning Lands and Heritage • Department of Transport • Department of Water and Environmental Regulation Development WA • Grange Resources • Great Southern Development Commission • Main Roads WA • Shire of Jerramungup • Southern Ports Authority • Water Corporation 		
Oct to Nov 2022	Briefings to Politicians	Emails and letters were sent to the Labor Member for Albany and the Federal member for O'Connor to provide an update on the project and offer a project briefing.	<ul style="list-style-type: none"> • Ensure local, state and federal elected members are informed of the project and have an opportunity to learn more about the project and ask questions 	Labor member for Albany and Federal Member for O'Connor. Briefing provided to the Labor Member for Albany.
Nov 2022	Community drop-in information sessions (Wellstead, Manypeaks and Albany)	<p>Three community drop-in information sessions were convened in Wellstead (where the mine site will be located), Manypeaks (where the groundwater extraction is proposed) and Albany (where the port operations and transhipping will occur).</p> <p>The session involved displays covering the different elements of the project, manned by relevant project team members including:</p>	<ul style="list-style-type: none"> • Provide stakeholders and the community with an opportunity to learn more about the project. Each session will involve displays covering the different elements of the project and speaking with 	A total of 23 community members attended the Wellstead Information Session, 5 people attended the Manypeaks Information session, and 20 attended the Albany session.

Timing	Method	Description	Purpose	Stakeholders
		<ul style="list-style-type: none"> About the project Mining magnetite process Potential mine site layout Water supply Transshipping Environmental approvals Working with the community including heritage <p>Participants were encouraged to complete a Community Feedback Form to indicate their level of satisfaction with the information session, their sentiments towards to project and any other comments they would like to make. Refer to a summary of the feedback in the Evaluation section of the report.</p>	project staff and consultants.	
Aug 2021 to Dec 2022	Stakeholder meetings	<p>Meetings were held with key government agencies, including the Department of Biodiversity Conservation and Attractions (DBCA), the Department of Water and Environmental Regulations (DWER), the City of Albany, Southern Ports Authority, the Department of Transport, Main Roads WA, the Water Corporation, and Western Power to obtain input to the project design and environmental approvals.</p> <p>Please note that decision-making authorities (such as Federal, State and Local Government statutory bodies working under the various Acts and Regulations) have been included in the Environment section.</p>	<ul style="list-style-type: none"> Inform stakeholders about the proposed modifications to the project Collect feedback regarding the proposed project 	Over 20 meetings were held with the following stakeholder organisations including: DBCA (Oct 2021, Apr, Jul and Aug 2022), DWER (Oct 2021), City of Albany (Mar and May 2022), Southern Ports Authority / Department of Transport (weekly), Main RoadsWA (June 2022 and as required), Department of Jobs, Tourism, Science and Innovation (Aug 2021, March and October 2022), Water

Timing	Method	Description	Purpose	Stakeholders
				Corporation (fortnightly during 2022), Western Power (Dec 2021, May, June, Nov 2022), Albany Chamber of Commerce and Industry CEO (Aug 2022), Port Community Consultation Committee (Feb 2022).
Ongoing	Aboriginal Traditional Owner Engagement	Email and phone communication with SWALSC and meetings with local Traditional Owners and Wagyl Kaip and Southern Noongar claimants to discuss the project and arrange ethnographic and archaeological heritage surveys for the project infrastructure. <u>Please note:</u> for more information about Aboriginal engagement and heritage, please refer to the Aboriginal Heritage report.	<ul style="list-style-type: none"> • Liaise with SWALSC and engage local Traditional Owners to provide an update on the project and conduct ethnographic and archaeological heritage surveys as required. 	South West Land and Sea Council (SWALSC). Traditional Owners - representatives of the Wagyl Kaip and Southern Noongar claimants.
May 2022	City of Albany meetings and presentations	Meetings were held with City of Albany staff and elected members to update them on the project, inform them of the engagement process and encourage participation in the information sessions.	<ul style="list-style-type: none"> • Ensure local council (staff and elected members) are informed of the project and engagement opportunities 	City of Albany CEO, Mayor, Deputy Mayor and 9 other elected members, plus the elected members' secretary
Sep 2022	Community events and technical forums	Participate in technical and community events to discuss the project and provide people with an opportunity to ask questions and discuss any concerns and opportunities. Some of the events identified include: <ul style="list-style-type: none"> • Groundwater forum (late Sep 22) 	<ul style="list-style-type: none"> • Participate in local initiatives and connect with local stakeholders and the community to build relationships and inform people of the project. 	The Groundwater Forum was attended by industry stakeholders, special interest groups, environmental groups, and the Wellstead community.

Timing	Method	Description	Purpose	Stakeholders
Ongoing	Community investment	Sponsoring community events such as the Wellstead Preharvest Sundowner and sports competitions such as the Southdown Shield Golf Competition.	<ul style="list-style-type: none"> Invest in local initiatives to strengthen the communities where SDJV will live and operate. 	Wellstead Community Resource Centre and Green Range Country Club
Communications				
Jul 2022 Oct 2022 Nov 2022	Grange Corporate Website – project webpage updates	Update the Grange project webpage to provide up-to-date information on the project, invite the public to attend an information session and outline the next steps in the project. For more information, visit www.grangeresources.com.au/operations/southdown .	Provide up-to-date information about the project Inform the public of engagement opportunities	Broader public
Oct 2022	Information Sheets	A series of information sheets was created to provide stakeholders and the community with detailed information about the project modifications. The information sheets included: <ul style="list-style-type: none"> General Project Overview Slurry and Return Water Pipelines Transshipping Mining Magnetite at Southdown Environmental Approvals Mine Closure Water Supply (including an insert with maps outlining the Manypeaks and Wellstead borefields) To view the information sheets, please visit www.grangeresources.com.au/operations/southdown .	Provide up-to-date information about the project modifications	Broader public
Oct 2022	Community drop-in information session Posters	A series of posters was created to display at the community drop-in sessions as follows: <ul style="list-style-type: none"> Welcome poster Southdown Magnetite Project poster 	Provide up-to-date information about the project modifications	Broader public

Timing	Method	Description	Purpose	Stakeholders
		<ul style="list-style-type: none"> • Mine to Metal Process poster • Value of Iron Ore Products poster • Potential Mine Site Layout poster • Conceptual Production Bore Design poster • Manypeaks poster • Wellstead poster • Regional Hydro poster • Transshipping poster • Environmental Approvals Proposed Project Changes poster • EP Act Assessment Process and Opportunities for Community Input poster • Existing Environmental Approvals poster • Environmental Approvals Mine Closure poster • Other Environmental Approvals poster • Working with the Community poster <p>To view the posters, please visit www.grangeresources.com.au/operations/southdown</p>		
Nov 2022	SPA social media and email to stakeholders	<p>A Facebook post ran over the weekend of the 5 Nov 2022 to inform SPA stakeholders of the Southdown Magnetite project community drop-in information sessions and encourage them to participate.</p> <p>An email to the following SPA stakeholders was sent to encourage stakeholders to participate in the information session:</p> <ul style="list-style-type: none"> • Our Port Community Consultation Committee Chair and Members (7 people) • Albany Bulk Handling • Albany Chip Terminal • Albany Plantation Export Company • Albany Tug Services • Ampol 	Inform SPA stakeholders of the information sessions and encourage them to participate.	SPA stakeholders

Timing	Method	Description	Purpose	Stakeholders
		<ul style="list-style-type: none"> • Australian Bulk Stevedoring • AustSand Mining • CBH Group • Stevens Bulk Services • Svitzer Australasia • Australian Bluegum Plantations • CBH Group 		

Stakeholder and Community Feedback

The feedback received throughout the engagement process has been summarised in the table below and is presented alongside the SDJV's response. A detailed stakeholder interactions register is outlined in Appendix B.

Engagement activity	Stakeholder and Community Participation	Feedback summary	SDJV response and actions
Albany Project Office	An average of 15 enquiries per week. One letter was written to Grange from a Port residential neighbour.	<ul style="list-style-type: none"> • Most enquiries are from businesses seeking work with the SDJV. • Port neighbour was invited to the office, updated on the project, invited to the community drop-in information sessions, and encouraged to join the PCCC, which they then did. 	Provided project information, encouraged to continue to look at the project website and contact the Project Office anytime with queries. Encouraged to join PCCC, which she did.
Meetings with Landowners (Mine Site)	Met with 4 immediate neighbours in Oct 2022.	<ul style="list-style-type: none"> • Interested in project progress; whether SDJV will purchase their properties; one resident was concerned about dust, and one wants to continue to lease SDJV property. 	<p>SDJV to meet with the resident to outline the results of dust and noise modelling and discuss any concerns and mitigations.</p> <p>The SDJV requires further investigation before determining if any surrounding properties need to be acquired.</p> <p>SDJV will respond to requests for an extension of the lease when available areas of the property are known.</p>

Engagement activity	Stakeholder and Community Participation	Feedback summary	SDJV response and actions
	<p>Met with four sensitive receptors immediately surrounding the mine site on 15 Dec 2022. Dust and noise expert, Program Manager and Community Engagement Specialist attended meetings. The meetings provided an update on the project, outlined the dust and noise modelling results for resident properties, explained the dust and noise mitigation that will be implemented to prevent impacts, and explained we will meet again with a further project update in February/March 2023.</p>	<p>A summary of the key points raised during the resident meetings is outlined below:</p> <ul style="list-style-type: none"> • Two sensitive receptors are generally supportive of the project. • One of the landowners was concerned about the potential impact of their crop spraying on nearby project infrastructure and asked about the potential impact of the mine site on property values. • A question was raised about the visual impact of the waste rock areas from the highway and landowner properties. • One landowner was concerned about the placement of the powerline for the project (being led by Alinta) and wanted to know where the power poles would be placed on their property. They want to be able to provide input to the poles placement. Landowner was also concerned about the potential impact on their neighbours property and advised they would support their neighbours if they will were to be negatively impacted. • One of the landowners was tired of the duration of the project and wanted to be able to make some firm decisions about their property and business. They explained they had been waiting for some years to make decisions about their property and business due to the pending 	<p>A list of key actions emerged from the meetings including:</p> <ul style="list-style-type: none"> • Email landowners to thank them for meeting as well as advise we will follow up any questions and actions. • Follow up actions and respond to landowners regarding questions raised – visual impacts, impact on property prices, impact on local workers, alternative to reversing beacons, etc. • Notify landowners when the environmental referral has been submitted to the EPA. • Meet again with sensitive receptors in February / March 2023 to provide a project update. • Hold community catch-up sessions at the Wellstead Community Resource Centre.

Engagement activity	Stakeholder and Community Participation	Feedback summary	SDJV response and actions
		<p>decision about the Grange project. In particular they are concerned about the impact of the project on their business and would like Grange to lead in discussions about options moving forward.</p>	<ul style="list-style-type: none"> • Explore the opportunity of using the back waste rock dump first to minimise the visual impact from the Highway and the impacts on neighbouring properties. • Conduct further dust modelling in specific locations.
<p>Meetings with Landowners (Borefields)</p>	<p>5 different landowners, multiple phone calls and in-person meetings during 2021/22.</p>	<ul style="list-style-type: none"> • Concerns about fire being caused in tree plantation by borefield power lines • Protection of biosecurity if Foot and Mouth Disease gets into Australia • Queries about groundwater replenishment • Manypeaks locals are concerned about groundwater extraction having vegetation impacts • Requests for a map showing the marked locations of the borefield(s) on the property(ies). 	<p>Commitment to bury new powerlines with tree plantations.</p> <p>Biosecurity concerns form part of the access agreement.</p> <p>Environmental impact assessments are part of the ongoing assessments being carried out, and this information will be provided to landowners.</p> <p>Any maps requested have been provided.</p>
<p>Meetings with Landowners</p>	<p>36 letterbox drops were made to residents surrounding the Port.</p>	<ul style="list-style-type: none"> • One port neighbour visited the Project Office to discuss the proposed operations at the Port. SDJV encouraged the resident to nominate to 	<p>Information sheets were delivered to immediate port neighbours and residents of</p>

Engagement activity	Stakeholder and Community Participation	Feedback summary	SDJV response and actions
(Port)	<p>One Port neighbour visited the Project Office.</p> <p>Some immediate residents are also members of the PCCC.</p>	<p>the PCCC, and they subsequently advised they had nominated and joined the committee.</p> <ul style="list-style-type: none"> • Three phone calls and emails were received following the letter drop in December 2022. Residents were interested in additional information about the project. Raised concerns about the potential dust, noise and odour from the Port operations. Enquired about the mitigation measures to be implemented to prevent impacts on surrounding residents. 	<p>Goode Beach to ensure they were informed of the project and proposed operations at the Port, including Transshipping.</p> <p>Provided information about the project including the impact assessment outcomes for the Port residents.</p> <p>Resident would like to be kept informed of additional detail about the design of the vessels used for transshipping and how the transfer of product would occur. Further descriptions, images, and example videos will be compiled to provide further detail.</p>
Meetings with key stakeholders	<p>Over 20 meetings were held with the following stakeholder organisations:</p> <ul style="list-style-type: none"> • DBCA (Oct 2021, Apr, Jul and Aug 2022) • DWER (Oct 2021) 	<ul style="list-style-type: none"> • Request for ongoing updates at various regular intervals, as identified by individual stakeholders • Clarity requested on proposed clearing areas • Request for continued collaboration and engagement • Concerns raised by some about groundwater abstraction impacts 	<p>SDJV meet with individual stakeholders as required for the project. This includes regular weekly, fortnightly or monthly meetings with the City of Albany, Southern Ports Authority / Department</p>

Engagement activity	Stakeholder and Community Participation	Feedback summary	SDJV response and actions
	<ul style="list-style-type: none"> • The City of Albany elected members – presentation to elected members in May 2022. • Meeting with City of Albany Mayor, Deputy Mayor and CEO – March 2022. Monthly planning meetings • Southern Ports Authority / Department of Transport – Ongoing, weekly • Main Roads WA – June 2022, and held as required • Department of Jobs, Tourism, Science and Innovation – Aug 2021, March and October 2022. • Water Corporation fortnightly during 2022. • Western Power – Dec 2021, May, June, and Nov 2022. • Albany Chamber of Commerce and Industry CEO –August 2022. <p>Port Community Consultation Committee –presentation in February 2022.</p>		<p>of Transport, Water Corporation and Western Power.</p> <p>Meetings are held with other stakeholder organisations at key milestones to provide an update on the project and obtain feedback including: DBCA, DWER, City of Albany elected members, Main Roads WA, Department of Jobs, Tourism, Science and Innovation, and Albany Chamber of Commerce and Industry.</p> <p>Stakeholders are also notified of upcoming community engagement activities and updates to project information.</p>
Southern Ports Authority meetings	Weekly meetings (and ongoing contact via phone and email) with the Southern Ports Authority to	<ul style="list-style-type: none"> • Ongoing project development including land access, engineering, marine safety, commercial etc 	Combined Stakeholder and Community Engagement Plan developed to cover the

Engagement activity	Stakeholder and Community Participation	Feedback summary	SDJV response and actions
	<p>discuss the project design and align the engagement process for the landside activities being led by Grange and the transshipping activities being led by SPA, in close partnership with Grange.</p>	<ul style="list-style-type: none"> • Discuss proposed operations at the Port of Albany and transshipping • Progress all aspects of the Port component of the project including landside (Grange is the proponent) and waterside (SPA is the proponent). • Align stakeholder and community engagement for all components of the Ports component of the project. 	<p>whole SDJV project including the land and water side of the Port operations (SPA is the proponent for the transshipping component). SPA review and approve all Ports related communications.</p> <p>Weekly meetings and workshops review the safe and efficient operation of the port, and have influenced the choice of anchorages to use, the location of facilities at berth 5, interactions with port traffic moving past berth 5, and access to services around the location.</p>
<p>Great Southern Development Commission Southdown Working Group (GSDC SWG)</p>	<p>Two meetings with the Great Southern Development Commission Southdown Working Group made up of 13 key local and state government agencies with an interest/impact on the project.</p>	<ul style="list-style-type: none"> • Meetings are held on a required basis. Dec 2021 and May 2022 meetings have been held during the PFS and DFS phases since early 2021. 	<p>These meetings often are information sharing sessions where members ask questions. Detailed feedback about the project is received in stakeholder meetings with each of these agencies.</p>

Engagement activity	Stakeholder and Community Participation	Feedback summary	SDJV response and actions
<p>Community Drop-In Information Sessions</p>	<p>Community members who attended the sessions were encouraged to discuss any questions or concerns with team members. Before leaving, community members were asked to complete a community feedback survey (90% completion rate). Team members covering seven displays were asked to fill out a short debrief form summarising the key questions, issues and opportunities raised. Both the community feedback survey and the team member debrief summary were examined to identify consistent trends and themes.</p> <p>The information sessions were attended by:</p> <ul style="list-style-type: none"> Wellstead – 23 attended and 22 completed the feedback form. Manypeaks – 5 attended and 4 completed the feedback form. 	<ul style="list-style-type: none"> Satisfaction with the information sessions was very high across the three sites, with 84% (36) of people saying they were either 'Very satisfied' or 'Satisfied'. 12% (5) were 'Neither satisfied nor dissatisfied', 5% (2) were 'Dissatisfied', and no one was 'Very dissatisfied'. Most participants stayed a minimum of 45 minutes and some well over an hour. People that attended were engaged, asked lots of questions and looked at every station. Overall support for the Southdown Magnetite project was high, with most community members explaining that the project will offer considerable economic benefits to the region. Wellstead was associated with the highest percentage of the concerned sentiments related to the potential direct impacts of the mine on landowners including dust, noise, property values, and environmental impacts. Other concerns raised at the information sessions were associated with groundwater supply and the impacts of transshipping on residents immediately surrounding the Port. Team member debrief summaries revealed similar trends to the community feedback survey. Team members reported that questions and concerns related primarily to areas such as environmental approvals, direct impacts on landowners, water supply and transshipping. 	<p>SDJV conducted a debrief session with the project team on 22 Nov 2022 to discuss the information sessions and any follow-up actions required. The following captures the key actions in response to the feedback received at the Community Drop-in Information Sessions:</p> <ul style="list-style-type: none"> Distributed the series of information sheets to local community venues following the Community Drop-in Information Session Update the project webpage to summarise the outcomes of the workshop and upload the information sheet series on the project webpage Offer all sensitive receptors (via letter, email and phone) opportunities to meet

Engagement activity	Stakeholder and Community Participation	Feedback summary	SDJV response and actions
	<ul style="list-style-type: none"> Albany – 20 attended and 17 completed the feedback form. 		<p>with the project team and technical experts to discuss the impact studies undertaken and the key outcomes.</p> <ul style="list-style-type: none"> Provide regular updates to local residents that registered to attend the information sessions and by having a regular story in local communication channels including the Wellstead Whisper and Albany Advertiser.
Community events and technical forums	Wetland Summit 2022	<ul style="list-style-type: none"> SDJV project team members and consultants attended the Albany Sandplain and Wetland Summit in Oct 2022. 	SDJV didn't present but attended to gain an insight into the wider academic research and in field learnings of the engaged landowners.
Briefing to politicians	Letters were sent to the Labor Member for Albany and the Federal Member for O'Connor to provide an update on the project and offer a project briefing.	<ul style="list-style-type: none"> Labor Member for Albany accepted the offer of a briefing delivered on November 22. Feedback was positive, with the local member supportive and interested in the Project. 	Committed to supplying the Labor Member for Albany with information sheets after the community drop-in information session days, which has been done.

Engagement activity	Stakeholder and Community Participation	Feedback summary	SDJV response and actions
Albany DBCA/ DWER	Update meetings in 2021 and 2022	<ul style="list-style-type: none"> • 2021 – Even though proposed borefield areas are not proclaimed under the RIWI Act, DWER advised the EPA will consult them for their advice regarding these areas. • 2022 – Meeting to occur on 7 Dec. The outcomes will be reported in the assessment phase report. 	Committed to H3 type reports for the proposed borefields. SDJV actions in response to Dec 2022 meeting will be reported in the assessment phase report.
Meetings with Traditional Owners	<p>Email and phone communication with SWALSC and meetings with local Traditional Owners and Wagyl Kaip and Southern Noongar claimants to discuss the project and arrange ethnographic and archaeological heritage surveys for the project infrastructure.</p> <p><u>Please note:</u> for more information about Aboriginal engagement and heritage, please refer to the Aboriginal Heritage report.</p>	<ul style="list-style-type: none"> • Numerous heritage surveys and studies have been conducted to determine if the changes to the project will affect Aboriginal heritage sites or places. The original surveys were carried out in 2005 and covered the mine site slurry / return water pipeline and a loading facility at Albany Port. When changes were made to the layout of infrastructure and the alignment of pipelines, additional surveys were conducted in 2011 and 2012. • In November 2014, a Community Participation Agreement (CPA) was signed by the South West Aboriginal Land and Sea Council (SWALSC) and representatives of the Wagyl Kaip and Southern Noongar claimants and the SDJV. The signing of the CPA was the culmination of a number of years of engagement between all parties. The objective of the CPA 'establishes a community partnership to assist in the achievement of employment outcomes for Noongar people, particularly Local Noongar People'. The aims of the CPA include the SDJV developing 	<p>A Community Partnership Committee will be formed to ensure the objectives and outcomes of the CPA are achieved.</p> <p>Due to new legislation being enacted, the CPA is in the process of being transferred to the new representative body.</p> <p>Additional Aboriginal ethnographic and archaeological surveys have been scheduled for January and February 2023 to cover changes to the mine site layout, minor changes to associated pipelines and roads, the proposed borefield disturbance</p>

Engagement activity	Stakeholder and Community Participation	Feedback summary	SDJV response and actions
		<p>employment training packages and training targets for Noongar people.</p> <ul style="list-style-type: none"> • During the years that the Southdown Project had reduced in activity, SDJV refrained from contacting stakeholders if there wasn't an update or a new message. • There was a need to confirm the Traditional Owner list provided by SWALSC for upcoming surveys. SDJV liaised with SWALSC requesting them to liaise with the Albany Heritage Reference Group (AHRG) to confirm the list. SDJV would accept whichever list was provided. Both parties confirmed the final list, and the archaeology and anthropology studies were carried out in July 2022. Further studies will be undertaken in January and February 2023. 	<p>footprint, and the realignment of some sections of the slurry / return water pipeline corridor, and new slurry emergency storage area, pump station and pipelines connecting to the approved slurry and return water pipelines.</p> <p>A project update will be made to the AHRG once the new TO group is established.</p>
Other Engagement	<p>A range of communications were undertaken to inform the community of the project including:</p> <ul style="list-style-type: none"> • SPA social media • Media advert 	<ul style="list-style-type: none"> • Three advertisements in the Albany Advertiser leading up to the Community Drop-in Information Sessions to encourage the community to attend a session and find out more about the project. 	<p>Some people who attended the drop-in days advised that they knew about them because of the advertisements.</p>

Evaluation

The stakeholder and community engagement process was evaluated by:

- Collecting stakeholder and community feedback about the engagement process at the community drop-in information sessions; and
- Conducting a continuous improvement workshop at key milestones to reflect on stakeholder and community feedback and identify opportunities for improvement.

Community Drop-in Information Sessions

The evaluation of the engagement process has shown that:

- 84% (34) of participants said they were 'Very satisfied' or 'Satisfied' with the community drop-in information sessions, 12% (5) were 'Neither satisfied nor dissatisfied', 5% (2) were 'Dissatisfied' and no-one was 'Very dissatisfied'.
- Some verbatim comments to explain why participants were satisfied with the session included:
 - *I learnt a lot, plenty of information.*
 - *Good info, great people.*
 - *Props were provided and everything was clear and well explained.*
 - *It covers all aspects of the project and very informative.*
 - *Straight forward answers, everyone was friendly.*
 - *Very informative, easy to understand, as a local it's great to be updated on the project.*
 - *Lots of information that was very well presented. Fantastic to be able to chat to the experts' 1 on 1.*
 - *We received answers on all our queries.*
 - *Everyone was happy to provide information, answer questions satisfactorily and take a long as it takes to answer my questions.*
 - *Professionals who know their stuff.*
 - *Specialists that I spoke to were very knowledgeable regards the project.*
 - *Extremely well organised. Great, engaging presenters and informative useful hand-outs.*
 - *Enjoyed the pleasant informative atmosphere.*
- Participants who reported that they were 'neither satisfied nor dissatisfied' with the information session provided this rating because they needed more information about the potential impacts of the project.
- Participants who were dissatisfied with the information session explained that they would have preferred a sit-down workshop with the ability to ask questions and hear comments from other community members.

Continuous Improvement

The project team met on 22 November 2022 to debrief on the community drop-in information session and identify strengths and opportunities for improving stakeholder and community engagement moving forward.

The key lessons learnt included:

- The information sessions were well presented with plenty of engaging information for the community. Community members stayed for a long time, asked lots of questions and visited all the information stations.
- The community provided feedback that project team members were friendly, had undertaken extensive research and took the time needed to answer all questions. Team members could convey extensive research and detailed information in a user-friendly format.
- Provided core samples of the bore that were tactile and engaging for community members.
- It was identified that additional information about Aboriginal heritage, transshipping, and the potential impacts on landowners surrounding the mine and the transshipping operations would be beneficial moving forward.
- In the next phase of the engagement process, additional and broader communications will be implemented to raise awareness of the project in Albany and across the region.
- Regular communications will be undertaken in the Wellstead area to ensure that stakeholders and the community feel informed of the project at every step of the way.
- Meetings will be held with landowners immediately surrounding the mine site and the transshipping operation to discuss the impact studies, ensure landowners are informed of the project's potential impacts and have an opportunity to ask questions and discuss concerns.

A stakeholder and community engagement strategy for the next phase of the project will be developed in January 2023. It will incorporate and respond to the community feedback throughout this engagement process and lessons learnt.

Next Steps

The SDJV will continue to liaise closely with all stakeholders, authorities, and the local community during the next phase of the project and will continue to adapt the engagement strategy to respond to the needs of stakeholders and the community. As a minimum, continuing engagement will involve the following:

- **Sensitive receptor meetings** – Meetings with sensitive receptors surrounding the mine site to provide an update on the project and discuss the results of the impact studies.
- **Heritage** – A project update will be offered to the new regional corporation to be formed under the South West Land Settlement as the representative body of the recognised local Traditional Owners. Additional Aboriginal ethnographic and archaeological surveys have been scheduled for January and February 2023 to cover changes to the project.
- **Aboriginal Participation** – A Community Partnership Committee will be formed to ensure the objectives and outcomes of the CPA are achieved as set out in the CPA.
- **Proposed Borefield landowner meetings** – Meetings with Borefield landowners and surrounding residents to discuss the groundwater science and provide opportunities to ask questions.
- **Information sessions (to be confirmed)** – Conduct a further round of information sessions in early 2023 to provide the community with additional opportunities to learn about the project, meet the team, ask questions and discuss the project.
- **Stakeholder meetings** – Convene a Great Southern Development Commission Southdown Working Group meeting, present to the City of Albany elected members and continue to meet with the regulator and other government agencies to provide an update on the project.
- **Communications** – Provide updates to stakeholders and the community using a variety of communication methods including the project webpage, letters and emails, media releases, local publications and member networks such as the Wellstead Whisper and the Albany Project Office.

A thorough engagement planning process will be undertaken to design a fit-for-purpose engagement strategy for the next phase of the project. The strategy will consider the specific needs of stakeholders and the community, including feedback received during the most recent engagement process and reflections from the continuous improvement workshop.

Further, the EP Act process for the assessment and approval of the Revised Proposal components of the project includes the following formal engagement opportunities:

- An opportunity to comment on the Referral documents submitted by Grange to the EPA – this is a 7 day public consultation period managed by the EPA.
- A potential opportunity for public review of the Environmental Review Document prepared by Grange and provide a submission to the EPA. The decision on whether there is to be a public review period and the length of this period is determined by the

EPA and advised at the time the EPA makes a decision on whether the Revised Proposal requires assessment under S.38 of the EP Act.

- An opportunity to submit an appeal to the EPA's Report and Recommendations on the Revised Proposal when it is released by the EPA – any appeals submitted are considered by the Minister for the Environment, on the advice of the Appeals Convenor, before the Minister makes a decision on whether to approve the Revised Proposal and what conditions to impose on it through the approval.

Appendix A – Stakeholder and Community Engagement Plan

SOUTHDOWN MAGNETITE PROJECT

Stakeholder and Community Engagement Plan

Definitive Feasibility (DFS) and environmental approvals

Last Updated:
November 2022

Please note that the Stakeholder and Community Engagement Plan is a working document. It will be reviewed and updated at key project milestones to ensure it meets the stakeholder and community needs for each phase of the project and remains responsive to emerging information and feedback.

Prepared by	Vivian Warren
Reviewed by	Glenda Stirling, Michael Everitt
Date	November 2022
Version	2

Table of Contents

1.	Purpose and Scope	1
1.1	Policy context	1
2.	Project and Environmental Approvals Overview.....	2
2.1	Existing Project Environmental Approvals.....	2
2.2	Pre-Feasibility Study 2022 – changes and implications for existing environmental approvals	4
2.3	Project Components	11
2.4	Project Stages and Timeframe.....	14
2.5	Lessons Learned	14
3.	Stakeholder analysis	16
3.1	Social risk and opportunities	25
3.2	Outrage Assessment.....	30
4.	Engagement Approach	31
4.1	Engagement Purpose and Objectives.....	31
4.2	Level of Engagement	31
4.3	Engagement Action Plan.....	32
4.4	Evaluation	36

1. PURPOSE AND SCOPE

The Stakeholder and Community Engagement Plan outlines the strategy for engaging with stakeholders and the community about the change in scope to the proposed Southdown Magnetite Project as part of the environmental approvals process.

The Plan covers:

- relevant background information,
- an overview of the local and regional community in which the project will operate,
- the negotiables and non-negotiables of the project,
- stakeholder mapping and analysis,
- a preliminary assessment of the social risks and opportunities with the project and management measures,
- proposed engagement processes for the life of the mine and resources required to deliver the process,
- evaluation measures to assess the effectiveness of stakeholder and community engagement at the end of this phase of engagement (to inform the following phases of engagement).

1.1 Policy context

As part of Grange's Safety and Environment Management System (SEMS 10), Grange is committed to engaging with stakeholders and the community to ensure there is awareness of proposed and existing operations, methods in place for stakeholders to raise any issues or concerns with projects, and proactive engagement is undertaken to build relationships, address concerns and document interactions.

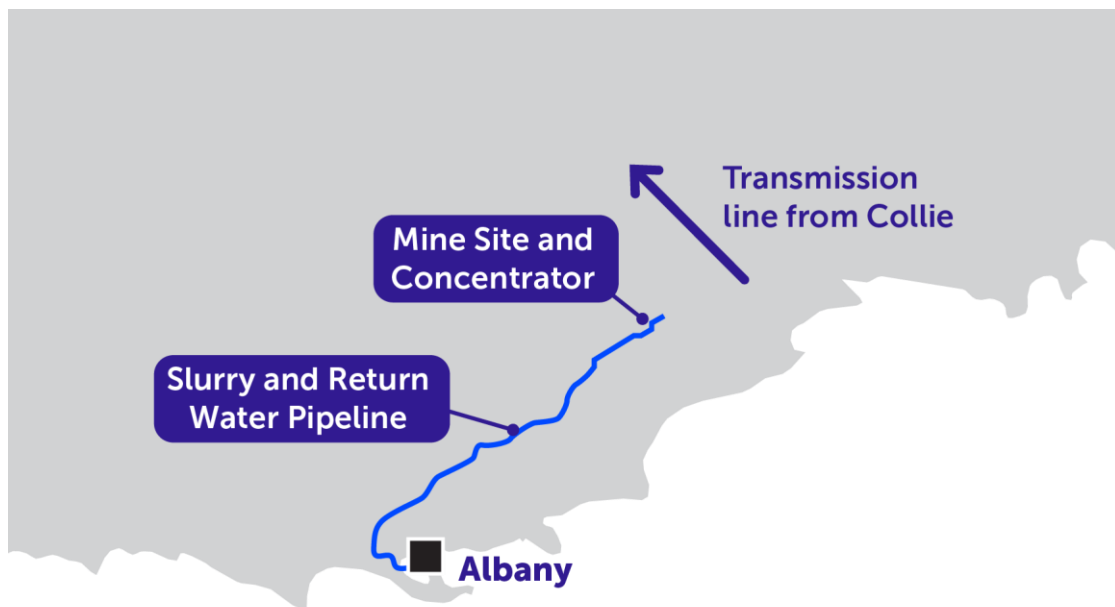
The EPA also requires proponents to engage with stakeholders and community members that may be impacted or interested in a project as part of the environmental approvals process. The application should demonstrate that adequate and appropriate engagement has been conducted leading up to its submission and how this engagement will continue to be undertaken throughout the life of the project. It is important to note that the objective of the EPA is to protect the environment, which includes the potential impacts on human health and social surroundings. Furthermore, the engagement undertaken for the EPA referral will also fulfil the requirement of secondary approvals for the Department of Mines, Industry Regulation and Safety (DMIRS), and will also contribute to the overall engagement for the project as it progresses through its different phases.

Further, the EPBC Act approval process can include a public comment period that requires the proponent to address submissions as part of the assessment process.

2. PROJECT AND ENVIRONMENTAL APPROVALS OVERVIEW

Grange Resources Limited (Grange), on behalf of the Southdown Joint Venture (SDJV) (Grange 70% and SRT Australia Pty Ltd 30%), proposes to develop a magnetite mine (the Southdown Magnetite Project) as part of the Albany Iron Ore Project, in the Wellstead area east of Albany.

The Project involves the construction and operation of an open pit magnetite mine and concentrator located approximately 90 kilometres (km) east north-east of Albany, and 10 km south-west of Wellstead in the Great Southern region of Western Australia, and pipelines for ore slurry transport and return water, connecting the mine site and new port loading facilities in the Albany Port. Power supply is expected to be delivered via a new transmission line from Collie to connect to the South West Interconnected System (SWIS). Water supply is expected to be sourced from recycled water from Water Corporation, and from groundwater sources in the region.



2.1 Existing Project Environmental Approvals

The project already has a number of Western Australian and Federal environmental approvals. These approvals and the elements of the project included within each approval under state and federal laws are summarised in Table 1 and Table 2 respectively.

Table 1: Existing Western Australian State Environmental Approvals for the Southdown Magnetite Project and Albany Port Expansion	
Approval	SDJV project elements included in the approval
Ministerial Statement (MS) 816 (as extended by MS 987, MS 1145) and as amended by Section 45C	Project as described in the Albany Iron Ore Project Public Environmental Review (PER), Southdown Magnetite Proposal published 2007, S45C Change to Proposal Applications, 2010 and 2011 and subsequent Ministerial Statements of Approval including:

Approval	SDJV project elements included in the approval
applications in 2010 and 2011, granted under the <i>Environmental Protection Act 1986</i> (EP Act) to Grange Resources Ltd.	<ul style="list-style-type: none"> • 45 Mtpa open pit magnetite mine and associated infrastructure; • slurry and return water pipelines between the mine and Albany Port; • water supply of not more than 4 GL/a (majority from recycled or treated wastewater sources); • accommodation village; and • dewatering plant, concentrate storage and above water ship loading facilities at Albany Port on already approved reclaimed land (Berth 7). <p>This approval will expire 25 November 2024 unless the project is substantially commenced, or an extension is sought.</p>
MS 904 (as extended by MS1061) granted under EP Act to Grange Resources Ltd.	<p>12 L/a Desalination Plant and associated pipelines to supply water to the mine site as described in the <i>Cape Riche Seawater Desalination Plant</i> PER published in 2011 and subsequent Ministerial Statements of Approval.</p> <p>This approval will expire 19 July 2022, and an extension application is in progress under S46 of the EP Act.</p>
MS 846 (as extended by MS 1004, MS1193) granted under EP Act to Albany Port Authority – now Southern Ports Authority (SPA).	<p>Albany Port Expansion Project as described in the <i>Albany Port Expansion Proposal</i> PER published in 2007 including:</p> <ul style="list-style-type: none"> • 12Mm³ dredging; • land reclamation to construct Berth 7 and construction of Berth including piling activities; and • deepening widening and extending existing channel to allow entry of Cape Size vessels to the Port. <p>This approval will expire 22 June 2027 unless the project is substantially commenced, or an extension is sought.</p>

Approval	SDJV Project elements included in the approval
EPBC 2011/6053 granted under the <i>Environment Protection and Biodiversity Conservation Act 1999</i> (EPBC Act) to Grange Resources Ltd.	<p>Project as described in the original project referral and the Summary Report for assessment of the Southdown Magnetite Project under the Environment Protection Biodiversity Conservation Act 1999 published in 2018 including:</p> <ul style="list-style-type: none"> • 10 Mtpa open pit magnetite mine and associated infrastructure; • borefield for construction water supply to the mine from the Wellstead Aquifer investigation area; • slurry and return water pipelines between the mine site and the Albany Port; • dewatering plant, concentrate storage and above water ship loading facilities at Albany Port on already approved reclaimed land; and

Approval	SDJV Project elements included in the approval
	<ul style="list-style-type: none"> desalination plant at Cape Riche to supply approximately 12 GL/a of water to the mine site and associated pipelines and transmission lines connecting the two. This approval will expire 31 December 2050 unless the project is substantially commenced or an extension is sought.
EPBC 2011/6066 granted under the EPBC Act to Western Power	<p>Construction and operation of a 330 kV transmission line between Muja Power Station and the mine.</p> <p>This approval will expire 31 March 2062 unless the project is substantially commenced or an extension is sought.</p>
EPBC 2006/2540 granted under the EPBC Act to Albany Port Authority - now SPA	<p>Albany Port Expansion including:</p> <ul style="list-style-type: none"> 12Mm³ dredging; land reclamation to construct Berth 7 and construction of Berth including piling activities; and deepening widening and extending existing channel to allow entry of Cape Size vessels to the Port. <p>This approval will expire 31 December 2025 unless the project is substantially commenced or an extension is sought.</p>
Sea Dumping permit (SD2020/3995) granted to Albany Port Authority under <i>Environment Protection (Sea Dumping) Act 1981</i> granted to Albany Port Authority.	<p>Albany Port Expansion – disposal of dredged material at sea.</p> <p>This approval will expire on 31 December 2025.</p>

2.2 Pre-Feasibility Study 2022 – changes and implications for existing environmental approvals

Grange is considering changes to the project that would result in a proposal design that is different to that assessed and approved under the EP Act and the EPBC Act as outlined in the tables above. These changes will require an amendment to existing environmental approvals, and in some cases new environmental approvals. Project changes identified during this PFS phase are outlined in Table 3.

Table 3 Project changes identified during the PFS phase

Project Aspect	Project Description	Change from Current Approval
Mine	Conventional drill/blast, load/haul open cut operation, excavating ~45 million tonnes per annum.	Same, reduction in mining rate, longer mine life to 28 years.
Processing	Concentrator using dry grinding, magnetic separation, flotation, and fine	Similar footprint and impact, relocated closer to the open pit,

Project Aspect	Project Description	Change from Current Approval
	grinding to produce 5 million tonnes per annum of iron ore as magnetite concentrate.	with reduction in processing rate to produce 5mtpa concentrate. Dry grinding technology has been adopted to reduce water and power demand.
Concentrate Transport	Concentrate is transported to the Albany Port in slurry form via a 110km buried pipeline.	Same footprint, injection point for RWTP water into return line. Assessing location of an emergency slurry storage area possibly at RWTP site.
Port Facilities	A filtration plant located at the Port will dewater the slurry to prepare the concentrate for export. Filtered water will be returned to the process plant via a return water pipeline buried in the same alignment as with the slurry pipeline.	Additional facilities on new location on existing Port land. Similar infrastructure with reduced capacity to handle 5mtpa, on smaller land area between existing operations.
Shipping	Concentrate will be loaded offshore onto Cape Size vessels in King George Sound using a transshipment vessel for export to overseas steel mills.	Change from direct loading at Berth 7 to using transshipment in King George Sound from Berth 5.
Power Supply	Early works have commenced for a 280km transmission line to connect to the SWIS at Collie based on the 2012 route developed with Western Power.	Intent is to use the same route and existing EPBC approval if possible. Proponent to now be Alinta in place of Western Power.
Water Supply	Water will be obtained from a variety of sources:	Moving from a single desalination plant under MS904 to recycled and groundwater from different locations.
	Recycled Water Treatment Plant – (RWTP) from Water Corporations Tree Farm	No change, contributes to use of recycled and treated wastewater (MS816)
	Groundwater - proposed borefields near Many Peaks and Wellstead South, and pit dewatering bores on site..	Additional water source and some vegetation clearing (MS816)
Tailings Management	Rejected waste materials from the concentrator will be managed by co-disposal with mine waste rock in dedicated management facilities on site using the footprint of the previously approved Tailing Storage Facility (TSF) and waste rock dumps. Dry grit and wet tails to be conveyed and trucked to the waste rock dump for co-disposal with mine waste. Sulphide rich tails from the	Tailings storage facility will change to a co-disposed waste rock dump with the same footprint and height. An additional waste rock dump on Lot 6842 will be added to accommodate any gap in capacity before the mine pit is available for backfill.

Project Aspect	Project Description	Change from Current Approval
	flotation circuit will be stored in a lined tailing storage facility.	
Accommodation Camp	Planned to accommodate 850 during construction, 250 during operation, with 100 additional construction rooms retained for shutdown.	Reduction in capacity, relocated on to land already owned by the SDJV
Mine Access Road	Access to the site will be from Gnowellen Rd.	. Gnowellen road will be upgraded for the increased traffic and the intersection with the South Coast Highway will be upgraded, resulting in some clearing to allow for widening.

Amendments to existing environmental approvals or new environmental approvals required as a result of these PFS changes are summarised in Table 4.

Table 4: Primary environmental approvals required for project changes

Key matters needing approval	Primary Environmental Approvals Required / Responsibility	Rationale	Risks of not amending the existing approval or seeking a new approval
<ul style="list-style-type: none"> • Vegetation clearing for: <ul style="list-style-type: none"> – access road intersection with South Coast Highway and along Gnowellen Rd – groundwater bore field infrastructure – Slurry dump zone – Revised alignment of the slurry / return water pipeline in Chester Pass Road area – Relocated pump station for return water pipeline • Changes to existing conditions of approval in MS816 	<p>State – Section (S) 38 MS816 Revised Proposal assessment under EP Act / Grange</p>	<p>The State approval (MS816) limited water use to mainly recycled water from the Albany Treatment Plant, and only up to a total of 4@ GL/a. The State approval (MS904) provided approval for the construction and operation of the Cape Riche Desalination Plant. The use of an alternative water source requires assessment, and it is likely that the EPA would provide an opportunity for the public to comment on use of water from a groundwater aquifer, particularly given there is no other government assessment/approval process for this action. Other changes required to MS816 (e.g. changes to vegetation clearing limits and existing conditions such as Condition 8-1 Acid Rock Drainage management) would also be addressed in this assessment.</p>	<p>The project would be non-compliant with the approval granted under MS816. This is a prosecutable offence under the EP Act.</p>
	<p>Commonwealth – new EPBC Act approval required / Grange</p>	<p>Commonwealth approval (EPBC 2011/6053) granted in 2020 allowed for the use of Wellstead Aquifer for construction water supply (up to 5 Gl/a) and the Cape Riche desalination plant.</p> <p>A proposal to source water from elsewhere (and other changes) would require a review of potential to impact on MNES, and referral to DAWE for a decision on whether assessment under the EPBC Act is required. The legal firm Herbert Smith Freehills (HSF) recommends that all change be referred, even if only to secure a ‘not a controlled action’ decision. Such a decision is a useful compliance risk mitigation tool. If assessment is required, it would be conducted as a new assessment as there is no legal avenue for variation of an EPBC Act approval due to proposal design changes post original approval.</p>	<p>The project would potentially be non-compliant with the EPBC Act. This is a prosecutable offence under the EPBC Act.</p>

Table 4: Primary environmental approvals required for project changes			
Key matters needing approval	Primary Environmental Approvals Required / Responsibility	Rationale	Risks of not amending the existing approval or seeking a new approval
(e.g. Condition 8-1 Acid Rock Drainage) <ul style="list-style-type: none"> • New / additional groundwater supply source and increase in total water limit for the project • Changes to Key Characteristics Table (e.g. removing individual footprint limits) 			
Additional filtration, storage and ship loading facilities at Berth 5, Albany Port (additional to Berth 7 approval – must be maintained for potential future project expansion)	State – include in the S38 Revised Proposal for MS816 changes above / Grange	EPA has advised it prefers that all changes to MS816 be considered as one package for assessment (that is, a Revised Proposal under S38 of the EP Act).	The project would be non-compliant with the approval granted under MS816. This is a prosecutable offence under the EP Act.
	Commonwealth – Include in EPBC referral for potential impacts to port-related marine activities	Assessment of this project element under the EPBC Act may not trigger a controlled action if the referral demonstrates no additional risks/impacts to MNE associated with the use of Berth 5 as well as Berth 7. HSF advises that all project changes be referred as an ‘action’ under the EPBC Act for a formal decision on whether assessment is required.	The project would potentially be non-compliant with the EPBC Act. This is a prosecutable offence under the EPBC Act.

Table 4: Primary environmental approvals required for project changes			
Key matters needing approval	Primary Environmental Approvals Required / Responsibility	Rationale	Risks of not amending the existing approval or seeking a new approval
Transshipping operations and creation of Jetty at Berth 5 and any construction required at offshore shipping transfer (marine facilities including any piling at Berth 5)	State – New S38 Proposal assessment under EP Act / SPA	Existing approval MS846 allows for the creation of a new Berth 7 for use of Cape Vessels. Berth 5 and trans shipping are not contemplated in this approval. SPA has advised that it is willing to be proponent of a new approval under Pat IV of the EP Act, and that it does not want to amend the existing MS846 approval. Accordingly, a new referral under S38 of the EP Act is proposed. <i>This position is currently under review by Grange. These proposal elements may be included within the MS816 Revised Proposal with Grange as proponent.</i>	The project would be non-compliant with the approval granted under MS846. This is a prosecutable offence under the EP Act.
	Commonwealth – New EPBC assessment / SPA	Existing approval EPBC 2006/2540 allows for the creation of a new Berth 7 and for use of Cape Vessels. Berth 5 and trans shipping are not contemplated in this approval. SPA has advised that it is willing to be proponent of a new approval under the EPBC Act. This could potentially be undertaken as a bilateral assessment with the above EP Act assessment.	The project would potentially be non-compliant with the EPBC Act. This is a prosecutable offence under the EPBC Act.
Overhead transmission line from Muja to Mine Site	State – EP Act approval (Parts IV and V) / Alinta Energy	Grange has selected Alinta Energy to build, own and operate this infrastructure to supply power to the mine site, and to obtain all necessary approvals. Alinta has confirmed that the EPA’s original decision that a Part IV assessment is not required is still valid (based on the exact same proposal being implemented with only a change in proponent), and that it will be required to obtain Part V Native Vegetation Clearing Permit for the alignment.	The project would be non-compliant under the EP Act.
	Commonwealth – EPBC Act transfer of existing approval from Western Power to	Grange has selected Alinta Energy to build, own and operate this infrastructure, and to obtain all necessary approvals. Alinta Energy plans to have the approval granted to Western Power under the EPBC Act transferred to it.	The project would potentially be non-compliant with the EPBC Act. This is a prosecutable offence under the EPBC Act. There is a

Table 4: Primary environmental approvals required for project changes			
Key matters needing approval	Primary Environmental Approvals Required / Responsibility	Rationale	Risks of not amending the existing approval or seeking a new approval
	Alinta Energy / Alinta Energy		risk that DAWE may not agree to transfer the approval from Western Power to Alinta Energy.

2.3 Project Components

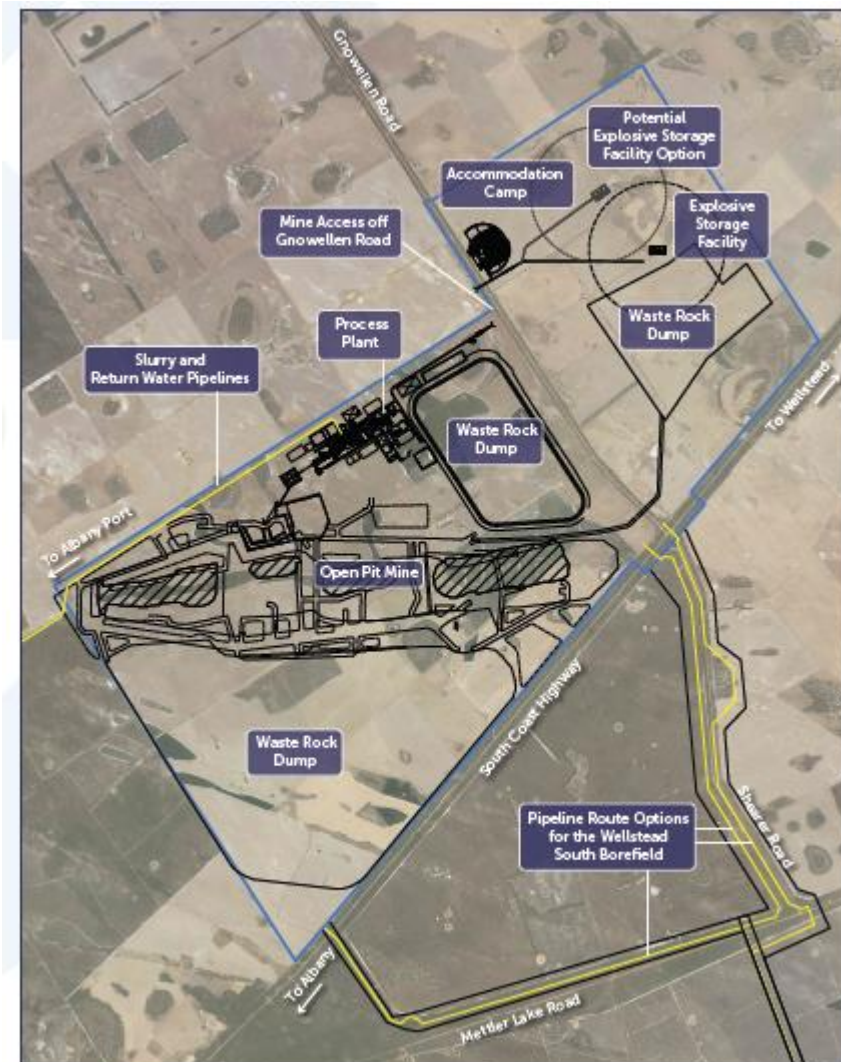
2.3.1 Mine Site

Wellstead is a small Western Australian rural town located within the local government area of the City of Albany in the Great Southern Region. It is located approximately 381 km from the WA capital city of Perth and 100 km from Albany.

Wellstead covers an area of 431.839 square kilometres and has a recorded population of 80 residents (according to the ABS state suburb).

Wellstead has the following community facilities:

- Wellstead Community Resource Centre
- Wellstead General Store
- “The Whisper” Coffee Shop
- Wellstead Bush Park Camp spot
- Wellstead Primary School
- CBH receival point



Proposed Mine Site Layout 2022

Neighbours, local residents and through traffic on the South Coast Highway and other local roads may experience increased dust emissions, noise and vibration from machinery, increased traffic up to the site entrance, and visual impact from structures, modified land forms, dust and intermittent blasting fumes.

2.3.2 Slurry Pipeline

During installation of the pipeline landowners and immediate neighbours may experience noise, dust, vibration, increased local traffic and visual disturbance. Landowner access to the easement area during construction will be negotiated. Once construction is complete the landowner will have access to the full area for farming activities with restriction on any construction over the easement.

2.3.3 Borefields

Development of the mine will involve dewatering to enable safe mining of the identified magnetite deposit, a portion of which is located below the regional watertable. The Project previously proposed and was granted approvals for the construction and operation of a desalination plant near Cape Riche and infrastructure corridor to provide a reliable and independent water supply for the mine and its associated activities. However, there were significant costs associated with this option. The Project is now exploring the option of sourcing water from borefields and will be submitting an application for environmental approvals in Q4 2022.

2.3.4 Port facilities

Once the concentrate reaches the Port, it will be filtered and stored ready for shipping. The excess water will be pumped back to the mine site in a return pipeline.

Landside

MS816 provides approval for the following facilities at Albany Port Berth 7:

- Administration buildings
- Dewatering plant
- Concentrate storage; and
- Above water ship loading facilities.

The Revised Proposal for MS816 will seek approval for these same facilities to also be established at the existing Berth 5 at Albany Port.

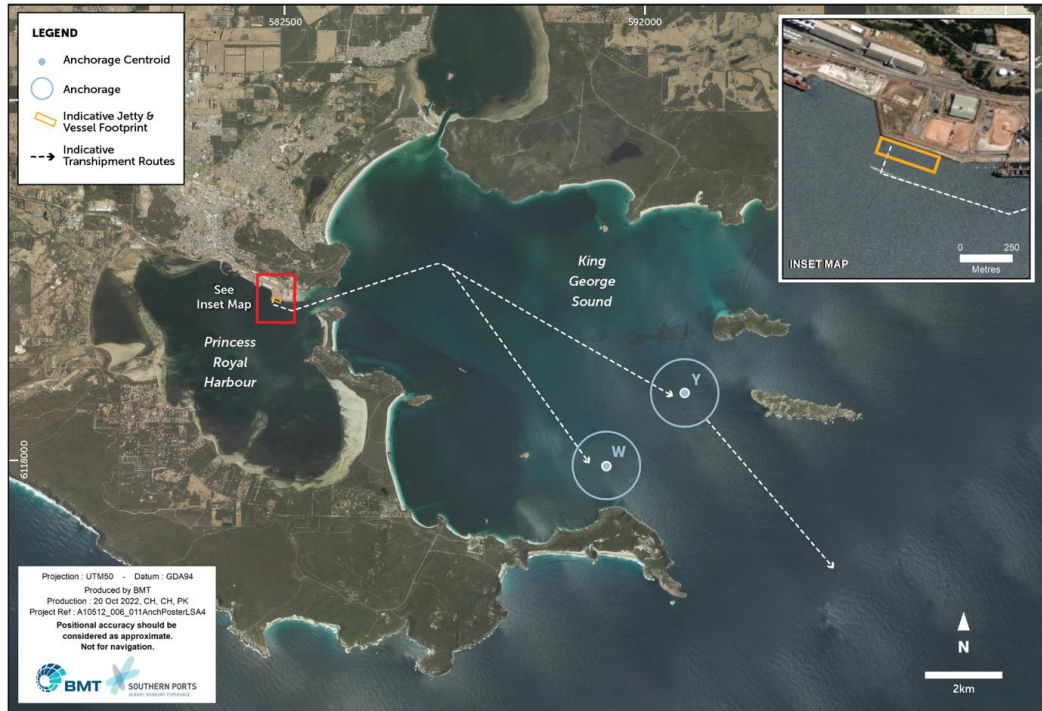


Technical studies being undertaken include Noise, Air Quality, Visual Impact and Marine assessment for potential spillages during transshipping vessel loading activities at berth.

Waterside

The project is assessing the use of transshipment to export the concentrate product.

A transshipment vessel would be loaded at Berth 5, and will then travel to a cape size vessel anchored in King George Sound for transfer of the concentrate.¹ This would be additional to the area with current environmental approval for shipping (Berth 7). Technical studies being undertaken include Underwater Noise Assessment, Airborne Noise Assessment, Air Quality Assessment, Visual Impact Assessment, Benthic Habitat, Marine Fauna, Greenhouse Gas Emissions, and Stakeholder Consultation.



2.3.5 Transmission line

A transmission line is required to provide power to the mine site. The transmission line is being explored by Alinta and they will be leading and managing all landowner access agreements and broader communications and engagement. Alinta's intention is to use the same alignment as that defined by Western Power previously and which currently has *Commonwealth EPBC Act 1999* approval. This alignment does not yet have *Western Australian EP Act 1986* approval.

2.3.6 Construction

Construction is expected to take 18-24 months to complete. Activities will be undertaken across all areas of the project according to a detailed schedule to be developed by the responsible contractor. This will result in traffic increases in the area due to workforce movement and delivery of materials and equipment by trucks.

2.3.7 Operations

The project will operate 24 hours per day, 365 days per year. A workforce of around 300 people (to be determined during the study period) will operate the mine, processing and export facilities. Water supply, power supply and pipelines will be monitored and maintained as required. Traffic will reduce substantially

¹ Z and D were the original locations proposed for anchoring the cape size vessels, however were moved to W and Y in response to an assessment of the potential social impacts and in consultation with SPA.

from the construction phase, with routine workforce movement, mostly on a roster basis, and routine deliveries of consumables.

2.3.8 Employment

The project will employ an estimated 850 people during construction and provide ongoing work for up to 250 once fully operational. It will seek to recruit locally, providing the project with some insulation from the skills shortages affecting other areas of Western Australia and will not be dependent on a fly-in, fly-out workforce.

2.4 Project Stages and Timeframe

The stages and timeframe for the Southdown Magnetite Project is outlined in the table below.

Table 5 Project Stages and Timeframes

Project Stages	Indicative timing
Exploration	Complete
Environmental Approvals	Q1 2024
Pre-Feasibility (PFS – plus or minus 30% accuracy)	Complete – Feb 2022
Definitive Feasibility (DFS – 10 to 15% accuracy)	2022
Planning and design	2022 – 2023
Construction	2024 – 2025
Operations	28 years
Decommissioning, Closure and Post-closure monitoring and maintenance	Following mine closure

2.5 Lessons Learned

In 2017, Grange Resources Limited (Grange) went above the mandatory requirements to ensure stakeholders were aware of the opportunity to provide public comment on the proposed Southdown Magnetite Project under the *Environment Protection and Biodiversity Conservation Act 1999* (EPBC Act). This included additional written notification of the public comment period to all landowners along the proposed pipeline routes, relevant government departments, interested environmental groups, and elected politicians for the local electorates, totalling 99 recipients. A notice of the public comment period was published in the West Australian, the Albany Advertiser and Wellstead Whisper prior to the public comment period commencing. Further, extensive stakeholder engagement was undertaken to provide updates on the Project, the EPBC Act process, the findings of impact assessments and mitigation measures. This included meetings with interested environmental groups and government departments and a presentation to the Wellstead Progress Association.

The key issues raised during the consultation and public submission process on the EPBC Act assessment and approval process are summarised below:

- Landowners and the community would like the timing of the engagement and public comment period to be considerate of the busiest farming periods and allow for sufficient time to consider and respond to information.

- Concerns regarding the extraction of groundwater in the Wellstead aquifers for water supply to the mine site. There is insufficient understanding of the vegetation community/hydrology relationship well enough in the south coast region to allow extraction of shallow groundwater in Wellstead aquifers for the project.
- Concerns about the impact of extracting groundwater on other species of national significance (apart from the Carnaby Cockatoo) including; the Vulnerable Forest Red-tailed Black-Cockatoo, Karrak (*Calyptorhynchus banksii naso*), Baudin's Cockatoo, (*Calyptorhynchus baudinii*), Malleefowl (*Leipoa ocellata*) and the Endangered Australasian Bittern (*Botaurus poiciloptilus*) (has been recorded in Mettlers Lake Nature Reserve in the past) are other faunal MNES that need to be considered.
- Concerns about the impact of the mine site and proposed extraction aquifers on native vegetation and Threatened Ecological Community (TEC), the Proteaceae Dominated Kwongan Shrublands of the south east coastal floristic province and WA Priority Ecological Community (PEC) made up of Flat Topped Swamp Yate (*Eucalyptus occidentalis*).
- Concerns about the impact of using groundwater on the native vegetation communities, landform, soils, soil moisture profiles and water tables.
- Concerns about the lack of research and potential impact to the ecology of Wellstead District; Cordinup Creek, Wilyun Creek, Eyre River (including Windy Windy Creek and the Pallinup River Catchment) as a result of using groundwater.
- Concerns that the flora surveys were conducted prior to a Threatened Ecological Community (TEC) being listed.
- Concerns about the impact of mine and infrastructure development on habitat for other nationally listed threatened species including the critically endangered Western ring tailed possum (*Pseudochierus occidentalis*) and the Vulnerable Noisy scrub bird (*Atrichornis clamosus*).
- Concerns about the impact of the proposed road diversion of Gnowellen Road on bushland, significant floral corridor between the Stirling Range National Park and the Cape Riche coastal reserve and Threatened Ecological Community (TEC), the Proteaceae Dominated Kwongan Shrublands of the southeast coastal floristic province.

All of the submissions received were adequately addressed and none required amendments to the Project.

3. STAKEHOLDER ANALYSIS

The following stakeholders and community members have been identified as likely to be impacted or have an influence on the mining approvals, operations or closure of the Southdown Magnetite Project.

Table 7: Southdown Magnetite Project Stakeholder Matrix

STAKEHOLDER MATRIX					
Stakeholder Type	Stakeholder Group	Reason for interest	Level of Interest**	Level of Influence**	Engagement and Comms Methods
Politician	Leader of the Opposition		Medium	Medium	Letter/email, information sheet and briefing (if requested)
Politician	Minister for Mines and Petroleum; Energy		High	High	Letter/email, information sheet and briefing (if requested)
Politician	Warren-Blackwood MP		Medium	Low	Letter/email, information sheet and briefing (if requested)
Politician	Minister for Water, Forestry, Youth		High	High	Letter/email, information sheet and briefing (if requested)
Politician	Shadow Minister for Mines and Petroleum		Medium	Medium	Letter/email, information sheet and briefing (if requested)
Politician	Premier of WA		Medium	High	Letter/email, information sheet and briefing (if requested)
Politician	Minister for Transport; Planning; Ports. Responsible for granting approval to the project for the Port Lease and Access Licence under the <i>Port Authorities Act 1999</i>		High	High	Letter/email, information sheet and briefing

STAKEHOLDER MATRIX					
Stakeholder Type	Stakeholder Group	Reason for interest	Level of Interest**	Level of Influence**	Engagement and Comms Methods
Politician	Minister for Environment; Climate Action. Responsible for granting approval for the Revised Proposal under the EP Act 1986.		High	High	Via approvals process
Politician	Albany MP		High	Low	Letter/email, information sheet and briefing (if requested)
Politician	Minister for Aboriginal Affairs. Responsible for granting approval to disturb any Aboriginal Heritage site impacted by the project under Aboriginal Heritage Act 1972 (or its new version currently before parliament).		High	High	Via approvals process
Politician	South West Region MLCs		Medium	Medium	Letter/email, information sheet and briefing (if requested)
Politician	South West Region MLC Minister for Agriculture and Regional Development		High	High	Letter/email, information sheet and briefing
Politician	Federal Minister for the Environment		Medium	High	Via approvals process (EPBC Act 1999)
Politician	Federal Member for O'Connor		High	Medium	Letter/email, information sheet and briefing (if requested)
Directly impacted landowners	Borefield landowners	Property access and infrastructure installation required	High	High	In person meetings, legal documents, letter / information sheet, invitation to Info Session
Directly impacted landowners	Borefield landowners no longer required	Previous potential borefield area	Medium	Low	Letter / information sheet, invitation to Info Session

STAKEHOLDER MATRIX					
Stakeholder Type	Stakeholder Group	Reason for interest	Level of Interest**	Level of Influence**	Engagement and Comms Methods
Indirectly impacted landowners	Borefield neighbours (all borefields)	Perceived impacts on properties / district due to borefields	High	Medium	Attendance at Progress Assoc meetings (and similar); Letter / information sheet, invitation to Info Session
Local Government	City of Albany CEO	Project would have impacts on usage of local govt provided infrastructure, plus healthcare, schools, housing, etc	High	High	In person meetings, inclusion in GSDC SDWG
Local Government	City of Albany Elected Members	Project would have impacts on usage of local govt provided infrastructure, plus healthcare, schools, housing, etc	High	High	Elected member briefings, site tour
Local Government	Shire of Jerramungup staff CEO	Project would have impacts on usage of local govt provided infrastructure, plus healthcare, schools, housing, etc	High	Medium	Inclusion in GSDC SDWG
Local Government	Shire of Jerramungup Elected Members	Project would have impacts on usage of local govt provided infrastructure, plus healthcare, schools, housing, etc	High	Medium	In person briefings as required
State Government	Dept of Biodiversity Conservation and Attractions (previously DPaW - Albany)	Regulator	High	High	In person meetings, ongoing consultation and updates
State Government	Dept of Jobs, Tourism, Science and Innovation (previously Dept. of State Development (DSD))	Interested in development	Medium	Medium	In person meetings, inclusion in GSDC SDWG
State Government	Dept. of Primary Industries and Regional Development (previously Ag Dept)	Interested in impact of development on recreational and commercial fishing	Medium	Medium	In person meetings

STAKEHOLDER MATRIX					
Stakeholder Type	Stakeholder Group	Reason for interest	Level of Interest**	Level of Influence**	Engagement and Comms Methods
State Government	Great Southern Development Commission Albany including Southdown Working Group	Interested in and helps facilitate regional development	High	Medium	Direct ongoing engagement plus SDWG meetings
State Government	Great Southern Institute of Technology	Training requirements for future construction and project employees	Medium	Low	Invitation to information session
State Government	Main Roads Department (Perth and Albany)	Direct impacts (slurry pipeline crossings for example) as well as increased road traffic	High	High	In person meetings, legal agreements
State Government	Southern Ports Authority (SPA) (was Albany Port Authority)	PCo – proponent for marine side Albany Port components under EP Act and EPBC Act for existing project, and potential proponent, or key stakeholder for Revised MS816 Proposal which includes transhipping from Berth 5. Regulator (<i>Port Authorities Act 1999</i> approvals)	High	High	Meetings, in person and online, emails, formal agreements
State Government	Water Corporation (Perth and Albany)	Direct impacts (RWTP for example) as well as increased population impacts on facilities	High	High	Meetings, in person and online, emails, formal agreements
State Government	Western Power (Perth and Albany)	Direct impacts (borefield power for example)	Medium	High	Meetings, in person and online, emails, formal agreements
Directly impacted landowners	Slurry pipeline alignment landowners	Infrastructure to be installed on their properties	High	High	Registered Easement Deeds plus ongoing communications with Community Liaison Mgr
Directly impacted landowners	Desal pipeline alignment landowners	Infrastructure to be installed on their properties	High	High	Registered Easement Deeds plus ongoing

STAKEHOLDER MATRIX					
Stakeholder Type	Stakeholder Group	Reason for interest	Level of Interest**	Level of Influence**	Engagement and Comms Methods
					communications with Community Liaison Mgr
Directly impacted landowners	Residents surrounding the Southern Ports (Goode Beach Community)	Potential visual, noise, dust impacts of operations at the Port	High	Medium	Letter / information sheet, invitation to Info Session
SPA Leaseholders	SPA leaseholders (marine and lease holders)	Interest in the project overall and potential impacts on their business / operation	High	Medium	Letter / information sheet, invitation to Info Session through SPA channels
Local community	Local communities especially Wellstead	Project site in local area	High	Medium	Community meetings; information in Wellstead Whisper
Local community	Wellstead Progress Association (Wellstead) and Manypeaks Progress Association	Project site in local area	High	Medium	In person meetings
Local community	Wellstead Community Resource Centre	Project site in local area	High	Medium	Via Wellstead Progress Assoc
Heritage	Native title holders, Traditional Owners	Potential impacts on heritage areas	High	High	In person meetings, presentations at working group meetings, Community Participation Agreement
Heritage	South West Aboriginal Land and Sea Council (SWALSC)	Potential impacts on heritage areas	High	High	In person meetings, presentations at working group meetings, Community Participation Agreement
Heritage	Albany Heritage Reference Group	Potential impacts on heritage areas	High	High	In person meetings, presentations at working group meetings,

STAKEHOLDER MATRIX					
Stakeholder Type	Stakeholder Group	Reason for interest	Level of Interest**	Level of Influence**	Engagement and Comms Methods
Environmental Groups	BirdLife Australia	Potential impacts on Carnaby's Cockatoo foraging sites	High	High	In person meetings and consultation
Environmental Groups	Bush Heritage	Potential impacts on remnant vegetation and native animals	High	High	In person meetings and consultation
Environmental Groups	Carnaby's Black Cockatoo Recovery Panel	Potential impacts on Carnaby's Cockatoo foraging sites	High	High	In person meetings and consultation
Environmental Groups	Gondwana Link	Potential impacts on remnant vegetation and native animals	High	High	In person meetings and consultation
Environmental Groups	Greening Australia	Potential impacts on remnant vegetation and native animals	High	High	In person meetings and consultation
Environmental Groups	Wildflower Society of WA (Perth and Albany)	Potential impacts on remnant vegetation	Medium	Medium	In person meetings and consultation
Environmental Groups	Conservation Council of WA	Potential impacts on land and marine environment	High	Medium	Invite to information session
Environmental Groups	Commercial Fishing Industry Associations	Potential impacts on commercial fishing	Medium	Low	Presentation to members, Invitation to Information Session
Environmental Groups	South Coast Purse Seine, Estuary	Potential impacts on land and marine environment	Medium	Low	Presentation to members, Invitation to Information Session
Environmental Groups	Recfishwest	Potential impacts on recreational fishing	Medium	Low	Presentation to members, Invitation to Information Session
Environmental Groups	Aquaculture Council WA	Potential impacts on land and marine environment	Medium	Low	Presentation to members, Invitation to Information Session
Special Interest Groups	Albany Dredging Reference Group	Potential impacts on marine environment	Medium	Medium	Invite to information session

STAKEHOLDER MATRIX					
Stakeholder Type	Stakeholder Group	Reason for interest	Level of Interest**	Level of Influence**	Engagement and Comms Methods
Special Interest Groups	Albany Chamber Commerce of Industry	Economic development opportunities resulting from the project	High	Medium	Presentation to members, Invitation to Information Session
Special Interest Groups	Whale Watching Industry	Interest in the impact of the project on operations	High	Low	Invitation to Information Sessions
Shareholders	Grange local shareholders (advocates / supporters)	Interested in seeing project proceed to raise share price	High	Low	Via Grange shareholder processes
Directly impacted landowners	Landowners / occupiers: Diproses, Geoff Hall, ENTS, FPC?	Currently have farming / tree operations on SDJV owned property – would have to vacate	High	Low	Direct communication – phone, email, legal agreements
Regulator	Environmental Protection Authority	<ul style="list-style-type: none"> - Regulatory assessment under Part IV of EP Act of potential impacts of the Revised Proposal on Flora, Vegetation, Fauna (terrestrial and subterranean), Groundwater Dependent Ecosystems, Inland Waters, Greenhouse Gases, Air Quality, Social Surroundings (noise), marine environmental quality, marine fauna. - Regulatory assessment of compliance with conditions of existing approvals 	High	High	Emails, meetings, letters, submission of documentation for assessment.
Regulator	Department of Water and Environmental Regulation	- Provision of advice to the EPA in its assessment of impacts of the Revised Proposal on biological factors and social surroundings/human health.	High	High	Emails, meetings, letters, submission of application(s)

STAKEHOLDER MATRIX					
Stakeholder Type	Stakeholder Group	Reason for interest	Level of Interest**	Level of Influence**	Engagement and Comms Methods
		<ul style="list-style-type: none"> - Regulatory assessment of applications under Part V of the EP Act for Works Approvals and Licences for the project (e.g assessment and management of air quality, noise, surface water drainage) - Regulator for <i>Waterways Conservation Act 1976</i> and issuer of dredging license for existing approvals 			
Regulator	Department of Biodiversity Conservation and Attractions	<ul style="list-style-type: none"> - Provision of advice to the EPA in its assessment of impacts of the Revised Proposal on biological factors and on conservation estate. - Regulatory assessment and approval of permits required for the project under the <i>Biodiversity Conservation Act 2020</i>. - Involvement in identification and acquisition of Biodiversity Offset Sites to meet existing and potentially new conditions of approval for the project. 	High	High	Emails, Meetings, Letters, submission of application(s)
Regulator	Department of Agriculture, Water and Environment (Commonwealth)	<ul style="list-style-type: none"> - Regulatory assessment and approval of Revised Proposal elements focused on potential impacts to Matters of National Environmental Significance 	High	High	Emails, meetings, letters, submission of application

STAKEHOLDER MATRIX					
Stakeholder Type	Stakeholder Group	Reason for interest	Level of Interest**	Level of Influence**	Engagement and Comms Methods
		- Regulatory approval of compliance with existing conditions of approval, and potentially new conditions of approval.			
Regulator	Department of Transport	Manage and regulate recreational boating and water use	Medium	High	Emails, meetings, letters, submission of application
Regulator	Dept of Mines, Industry Regulation and Safety	Regulatory assessment and approval of Mining Proposal and Mine Closure Plan and Project Management Plan.	High	High	Emails, meetings, letters, submission of application
Regulator	Dept of Planning, Lands and Heritage	Processing of Heritage and Planning approvals	High	High	Emails, meetings, letters, submission of application
Regulator	Dept of Health	Regulatory assessment and approvals for project including for Recycled Waste Water Treatment Plant, Sewerage facilities at mine site etc	High	High	Emails, meetings, letters, submission of application
Media	The West Australian	State media	Low	Low	Media releases
Media	Albany Advertiser	Local media, local interest	Medium	Low	Media releases, interviews
Media	Wellstead Whisper	Covers local project area	High	Low	Media releases, articles
Media	ABC Great Southern	Covers Great Southern region	Medium	Medium	Interviews
Utility	Alinta – electricity provider	Proposed transmission line constructor	High	High	Direct engagement via legal documents
Utility	Water Corporation	Covered above	Medium	Medium	GSSDC

*Contact the Relationship Manager or Community Relations Team to identify the relationship owners for key stakeholders.

SCALE: **Low = low level of interest, impact or influence on the project, **Medium** = medium level of interest, impact or influence on the project and **High** = high level of interest, impact or influence on the project

3.1 Social risk and opportunities

The social risks and opportunities for the project were identified based on a desktop review of existing information and project team knowledge and experience with stakeholders and the community. All social impacts were assessed for significance based on a likelihood / consequence matrix, described in the tables below.

Table 8: Consequence rating

Rating	Positive	Negative
Major	Long lasting positive social change affecting large number of stakeholders across local and regional area. Strongly evidenced and broadly shared community aspiration.	Long lasting negative social change affecting large numbers of stakeholders, across local and across local and area. Very broad and intense community concern, third party action, ministerial action, widespread negative media.
Moderate	Positive social change affecting some stakeholders in local and regional area for long durations (more than one year). Generally aligned with community aspiration.	Negative social change affecting stakeholders in local and regional area for long durations (more than one year). Some evidence of community concern. Adverse comment from key decision makers / ministers, negative media.
Minor	Positive social change affecting small number of stakeholders for short duration. Limited evidence of alignment with community aspiration.	Negative social change affecting small number of stakeholders. Short duration and evidence of limited community concern. Adverse comments by stakeholder organisations.
Negligible	Negligible social change. No recorded community aspiration.	Negligible social change. No recorded community concern.

Table 9: Likelihood rating

Rating	Description
Almost certain	Above 90% likelihood of occurring during the project
Likely	Between 75% and 90% likelihood of occurring during the project
Moderately likely	Between 25% and 75% likelihood of occurring during the project
Unlikely	Less than 25% likelihood of occurring during the project

Table 10: Impact significant matrix

		Consequence			
		Negligible	Minor	Moderate	Major
Likelihood	Almost certain	Medium	High	Very high	Very high
	Likely	Medium	Medium	High	Very high
	Moderately likely	Low	Medium	Medium	High
	Unlikely	Low	Low	Medium	Medium

The social risk assessment captured in the table below details potential social risks associated with the project, identifies the consequence and likelihood of the risk prior to and post the implementation of mitigation/management strategies.

Table 11: Southdown Magnetite Project Social Risk Assessment

No.	Social risk / opportunity description	Pre Mitigation			Potential Mitigation / Management Strategy	Post Mitigation		
		Consequence (1-5)	Likelihood (A-E)	Risk Rating		Consequence (1-5)	Likelihood (A-E)	Risk Rating
1	EPA’s publication of SDJV’s application for environmental approval of project amendments is the first time the community learns of changes in scope of the project, causing opposition and backlash for the project.	Major	Almost certain	VERY HIGH	Prepare and implement a stakeholder engagement plan before, during and after environmental referral to update the community on the project, outline project modifications and provide opportunities for questions and discussions of issues or concerns. Respond to community issues or concerns wherever possible in the project design.	Minor	Moderately likely	MEDIUM
2	Alienation of potential borefield landowners because the first time they are aware that their land is being considered for a borefield is in the published referral to the EPA. Could result in the loss of the potential borefield area(s).	Major	Likely	VERY HIGH	Complete the necessary work to identify potential borefield locations. Identify and engage with landowners to reach an agreement regarding land access for bore testing and siting prior to referring the project for environmental approvals.	Minor	Moderately likely	MEDIUM

No.	Social risk / opportunity description	Pre Mitigation			Potential Mitigation / Management Strategy	Post Mitigation		
		Consequence (1-5)	Likelihood (A-E)	Risk Rating		Consequence (1-5)	Likelihood (A-E)	Risk Rating
3	Landowners and surrounding farmers in the vicinity of the borefields may be concerned that the drawdown of water by SDJV could lead to a lack of available water for their crops and trees.	Moderate	Almost certain	VERY HIGH	Prepare scientific explanation/ presentation to landowners and farmers to demonstrate that the water drawn down by SDJV would not have any adverse impacts on their crops.	Minor	Moderately likely	MEDIUM
4	The broader community are misinformed about the change in scope of the project via landowners who are consulted regarding individual borefields.	Moderate	Almost certain	VERY HIGH	SDJV conduct wider community communications and engagement in parallel with landowner negotiations	Minor	Moderately likely	MEDIUM
5	Stakeholder concerns regarding the impact on the environment of project changes, leading to community outrage and environmental activism against the project.	Moderate	Almost certain	VERY HIGH	Ensure there is sufficient technical information available to address potential concerns and to discuss and alleviate these.	Minor	Almost certain	HIGH
6	The EPA considers that SDJV has not conducted sufficient engagement regarding the change in scope to the project and request additional engagement, delaying the approvals process.	Moderate	Likely	HIGH	Proactively engage and document stakeholder and community activities including feedback received and how it has been responded to. Include these details in the EPA Approvals documentation.	Minor	Unlikely	LOW
7	There is insufficient supporting technical information to alleviate potential community and stakeholder concern resulting in backlash.	Moderate	Almost certain	VERY HIGH	Conduct the necessary assessments and obtain technical information to respond to potential concerns.	Minor	Moderately likely	MEDIUM

No.	Social risk / opportunity description	Pre Mitigation			Potential Mitigation / Management Strategy	Post Mitigation		
		Consequence (1-5)	Likelihood (A-E)	Risk Rating		Consequence (1-5)	Likelihood (A-E)	Risk Rating
				HIGH	Provide the project team with community feedback to consider and incorporate in project decisions.			
8	Alienation of Southern Ports Authority if amendments related to transshipping, the usage of alternate port land and development of filtration and material handling infrastructure have been submitted to the EPA before agreements are in place with SDJV.	Moderate	Likely	HIGH	Allow the time needed to engage the SDJV to reach agreement with Southern Ports regarding the Southdown Transshipping Project before referring the project amendments to the EPA. Obtain extension of MS846 prior to submission of amended/new referrals.	Minor	Unlikely	LOW
9	Community concerns regarding noise, dust and visual impacts associated with the operations shifting to Berth 5 at Albany Port and potential cumulative impact during the transition of operations to Berth 7 in future for project expansion.	Moderate	Almost certain	VERY HIGH	Build a strong relationship with the Southern Ports Authority and provide information and support it requires to engage its stakeholders and communities in this component of the project.	Moderate	Likely	HIGH
10	A lack of coordination between the SPA and Grange in managing the engagement for the transshipping components (landside and waterside) may confuse the community.	Moderate	Likely	MEDIUM	Work closely with the SPA to develop a coordinated engagement plan for the transshipping elements of the project and regular communications during the implementation of the engagement approach.	Minor	Unlikely	LOW

No.	Social risk / opportunity description	Pre Mitigation			Potential Mitigation / Management Strategy	Post Mitigation		
		Consequence (1-5)	Likelihood (A-E)	Risk Rating		Consequence (1-5)	Likelihood (A-E)	Risk Rating
11	Community outrage and opposition may lead to a lack of political support for the project (at a local and state level).	Major	Moderately likely	HIGH	Take the time needed to engage early with stakeholders and the community. Obtain the necessary information required to address concerns and ensure SDJV are the primary source of information about the project.	Minor	Unlikely	LOW
12	Potential Aboriginal heritage issues with the change in scope to the project.	Moderate	Likely	MEDIUM	Employ an Aboriginal Heritage Consultant to carry out heritage surveys and engage the appropriate stakeholders to address and resolve any Aboriginal Heritage matters that arise.	Minor	Likely	MEDIUM
13	Securing the provision of electricity including all landowner access and approvals in time for the project start date. Risk of poorly managed engagement with stakeholders.	Major	Almost certain	VERY HIGH	Work closely with Alinta to stay informed of how they engage with stakeholders and the community to deliver electricity for the project.	Moderate	Likely	HIGH

3.2 Outrage Assessment

The following outrage assessment has been undertaken using Peter Sandman’s Outrage Risk Factors to understand the potential for outrage.

Table 12: Outrage Assessment

Peter Sandman’s Outrage Triggers	Potential risk of triggering outrage		
	Low	Med	High
Is it voluntary or coerced?		Med	
Is it natural or industrial?			High
Is it familiar or exotic?		Med	
Is it not memorable or memorable?		Med	
Is it not dreaded or dreaded?		Med	
Is it chronic or catastrophic?	Low		
Is it knowable or not knowable?			High
Is it controlled by me or by others?			High
Is it fair or unfair?			High
Is it morally irrelevant or morally relevant?	Low		
Can I trust you or not?		Med	
Is the process responsive or unresponsive?	Low		

Source: Sandman, P. M. (1993). *Responding to community outrage: Strategies for effective risk communication*. AIHA

4. ENGAGEMENT APPROACH

4.1 Engagement Purpose and Objectives

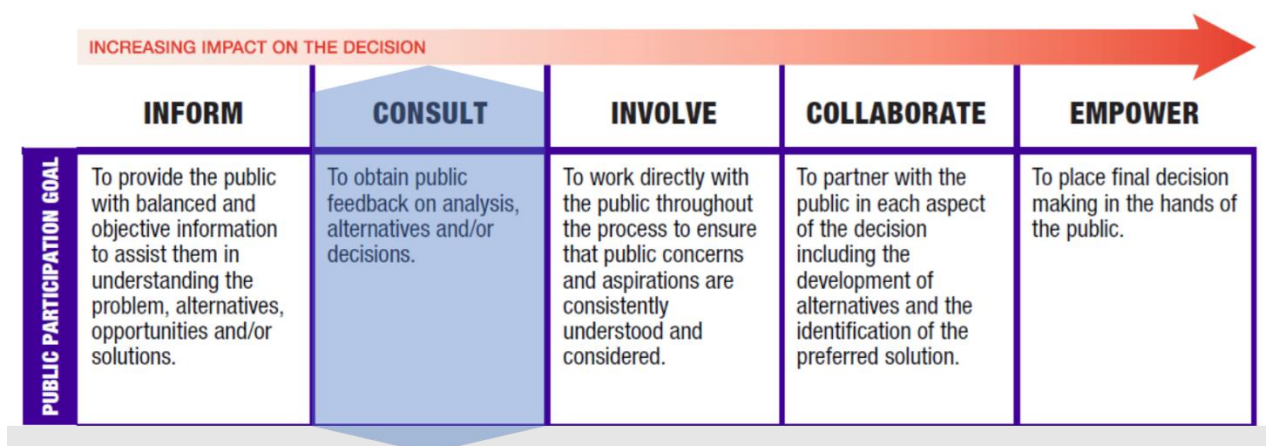
The purpose of the stakeholder and community engagement strategy is to enable individuals, groups and agencies potentially interested or affected by the project to provide feedback, ask questions, raise issues or opportunities and have their feedback considered.

Specifically, the engagement process aims to:

- Provide stakeholders and the community with an update on the project and keep them updated as the project progresses;
- Update targeted stakeholders on the relevant science before conducting field studies (such as, expected ground water drawdown levels, noise, dust and visual studies at the port);
- Negotiate land access agreements and Port approvals;
- Align the approach for engagement between the different project components;
- Obtain input to the environmental and secondary approvals, including mine closure;
- Understand and mitigate potential social risks and enhance opportunities;
- Maintain a strong relationship with stakeholders and the community;
- Support the Southern Ports Authority in their engagement with stakeholders and the community for the transhipping component of the project; and
- Actively listen and respond to stakeholder and community feedback.

4.2 Level of Engagement

IAP2's Public Participation Spectrum outlines five levels for engaging the community and stakeholders from simply informing them about a project (inform), to delegating the decision to them (empower). The overarching level of engagement for this project and the public participation goal and promise to the public for that level.



4.3 Engagement Action Plan

The following table outlines the activities that will be undertaken to engage stakeholders and the community during the pre-feasibility, feasibility and environmental approvals phases for the Southdown Magnetite project.

Timing	Method	Description	Stakeholders
Ongoing – Monday to Friday business hours	Project Office in Albany	Project office established in Albany to allow stakeholders and community members to find out more about the project, ask questions or discuss any issues or concerns. Members of the community can drop in at any time during business hours from Monday to Friday without making an appointment (open door). The details of the site office are listed in the white pages. This provides a single point of contact for the project.	<ul style="list-style-type: none"> Local community members and businesses Stakeholder organisations
Mar to Nov 2022	Borefield landowner meetings	Meet with landowners within the Borefield investigation areas to gain approval for additional bore testing on their site and explore willingness to have borefields on their property. Update landowners on the negligible expected groundwater draw down as a result of the bore abstracting groundwater from the lower aquifer. Following this, obtain tenure for borefields within the next 6-12 months.	<ul style="list-style-type: none"> Landowners within the Borefield investigation areas (approximately 6 landowners)
Sep to Oct 2022	Mine site immediate resident meetings	Meet with immediate residents surrounding the mine site to provide an update on the project, discuss the mine site configuration, answer questions and discuss any issues or concerns.	<ul style="list-style-type: none"> Immediate residents surrounding mine site
Oct 2021 Jan 2022 X 2 Feb 2022 X 2 May 2022 Ongoing moving forward	Southern Ports Authority meetings (and ongoing contact via phone and email)	Meet with the Southern Ports Authority to discuss the project design and align the engagement process for the landside activities being led by Grange and the transshipping activities being led by Grange with SPA as the partner and proponent of the transshipping capital approvals.	<ul style="list-style-type: none"> Southern Ports Authority
Dec 2021 to Dec 2022	Stakeholder meetings	Meet with key government agencies (DBCA and DWER), City of Albany, Southern Ports Authority / Department of Transport, Main RoadsWA, Water Corporation, and Alinta to obtain input to the project design and environmental approvals.	<ul style="list-style-type: none"> DBCA DWER City of Albany

Timing	Method	Description	Stakeholders
			<ul style="list-style-type: none"> • Southern Ports Authority / Department of Transport • Great Southern Development Commission • Main RoadsWA • Department of Jobs, Tourism, Science and Innovation • Water Corporation • Western Power / Alinta • Albany Chamber of Commerce and Industry • Port Community Consultation Committee
31 May 2022 2 Nov 2022 for local member	City of Albany meetings and presentations	Present to the City of Albany elected members to provide an update on the project and answer questions / discuss feedback.	<ul style="list-style-type: none"> • City of Albany staff and elected members
Ongoing	Alinta engagement oversight	Oversee the engagement and communications undertaken by Alinta for the transmission line and obtain regular feedback on progress and any potential issues, concerns or opportunities.	<ul style="list-style-type: none"> • Alinta
First week Dec 2021	GSDC Working Group meeting	Meet with the Great Southern Development Commission Working Group to provide an update on the project and obtain input to the project design, mine closure and environmental approvals.	<ul style="list-style-type: none"> • GSDC Working Group
May 2022		Meet with the Great Southern Development Commission Working Group to provide an update on the project, with a focus on the land and water side Ports activities.	<ul style="list-style-type: none"> • GSDC Working Group

Timing	Method	Description	Stakeholders
Oct to Nov 2022	Briefing to Politicians	Send an email / letter and offer a briefing to federal, state and local politicians. Work with the SPA to provide relevant information to brief the Minister about the project.	<ul style="list-style-type: none"> Local members – MLA, MLC and Federal Ministerial briefing through the Ports
Nov 2022	Community drop-in information sessions (Wellstead, Manypeaks and Albany)	<p>Convene three community drop-in information session near the mine site (Wellstead), where the proposed groundwater extraction may occur (Manypeaks) and the transshipping activities (Albany Port) to provide stakeholders and the community with an update on the project, the proposed modifications to the project and provide an opportunity to ask questions and provide feedback.</p> <p>The session will involve displays covering the different elements of the project, staffed by relevant project team members. Stakeholders and the community will be able to visit the displays that they are most interested in and ask questions / obtain additional information. We will also ask community members to complete a Community Feedback Form to document their sentiments towards the project and provide feedback on the project.</p>	<ul style="list-style-type: none"> Landowners The broader community and businesses Key stakeholder and community groups (including members of the former Albany Dredging Reference Group and the Marine Energy Renewables Centre)
Ongoing	Aboriginal Traditional Owner Engagement	Liaise with SWALSC and engage local Traditional Owners to provide an update on the project and conduct ethnographic and archaeological heritage survey as required.	<ul style="list-style-type: none"> South West Land and Sea Council (SWALSC) Traditional Owners - representatives of the Wagyl Kaip and Southern Noongar claimants
Ongoing	Community events and technical forums	<p>Participate in technical and community events to discuss the project and provide people with an opportunity to ask questions or discuss any issues, concerns and opportunities. Some of the events identified include:</p> <ul style="list-style-type: none"> Groundwater forum (Oct 2022) Wellstead Preharvest Sundowner (late Sept 22) Others as they arise. 	<ul style="list-style-type: none"> Industry stakeholders Special interest groups Environmental groups Wellstead community

Timing	Method	Description	Stakeholders
Ongoing	Community investment	Sponsoring community events such as the Wellstead Preharvest Sundowner and sports competitions such as the Southdown Shield Golf Competition.	<ul style="list-style-type: none"> Local groups to the mine site
Jul 2022 Oct 2022 Nov 2022	Grange Corporate Website – project webpage update	Update the Grange project webpage to provide up to date information on the project and the next steps.	<ul style="list-style-type: none"> Broader public
Nov 2022	Wellstead Whisper Project Update	<p>Provide project updates via the Wellstead Whisper, encourage the community to find out more about the project via the project webpage, project office and communications and invite the community to attend the drop-in information sessions.</p> <p>Make BBQ cards available at the Wellstead Community Resource Centre, Albany Library and other local facilities.</p>	<ul style="list-style-type: none"> Wellstead residents and businesses
Oct 2022	Local newspaper adverts	Publish adverts in the local newspaper to advise the community of the community drop-in information sessions and invite them to attend.	<ul style="list-style-type: none"> Albany Advertiser Broader public
Sep 2021 to Dec 2022	BBQ cards	Distribute BBQ cards to the public to inform them of the project and provide contact details to learn more about the project. These will be distributed by project team members and contractors that interface with the public and available at local community facilities.	<ul style="list-style-type: none"> Broader public Landowners contacted by contractors undertaking investigations
Oct 2022	Information sheets	Create a series of information sheets to provide stakeholders and the community with detailed information about the project.	<ul style="list-style-type: none"> Public
Oct 2022	Posters	Create a series of posters to display at the community drop-in information sessions to provide simple and graphic information about the project to stakeholders. These will be complimented by detailed information sheets for further information.	<ul style="list-style-type: none"> Public
Ongoing	SPA social media	Provide regular project updates, when appropriate, via the SPA social media and the Ports Newsletter (TBC).	<ul style="list-style-type: none"> Public

For more information about engagement with SWALSC, Aboriginal elders and Traditional Owners, please refer to the Aboriginal Heritage report.

4.4 Evaluation

The stakeholder and community engagement process will be evaluated as follows:

- Collect stakeholder and community feedback about the engagement process at all community engagement activities / events as well as obtaining informal feedback when interacting with key stakeholders (and making notes of these);
- Responding to engagement feedback on an ongoing basis (via anecdotal and formal feedback methods) and refining the engagement approach to best respond to stakeholder and community needs; and
- Conducting a continuous improvement workshop at key milestones of the project to reflect on stakeholder and community feedback and identify opportunities for improvement.

**Appendix B – Stakeholder and Community
Engagement Register**

Southdown Magnetite Project - Stakeholder and Community Interactions Register (STAKEHOLDERS DE-IDENTIFIED)

This spreadsheet presents the community and stakeholder engagement and communication activities undertaken during the PFS and pre-referral phase of the Southdown Magnetite Project. It provides an overview of feedback received, Grange's response to the feedback, and the outcomes/resolution following the engagement.

Date	ID	Event type (i.e. Phone call in/meeting/Email out)	Description	Project attendees	Key information provided to stakeholders	Feedback summary (i.e. Borefields, land access, project update)	Stakeholder feedback (comments / concerns)	Stakeholder/Grange response, action, commitments and outcome(s)
22/7/2021	1	Meeting	Pre-Referral Meeting for MS816	Sameer Chhikara, Michael Everitt, Geoffrey Han, Nick Eveleigh (Rockwater), Caroline La Fontaine (Quessentia) and Jackie Boyer (Quessentia)	Presentation provided to regulator on potential changes to the project, seeking feedback on potential assessment processes and survey methodologies. Initial discussion around maintaining power supply as a separate approval.	Project requirements	EPA welcomed early approach, consensus that ARI approach is best with referral around Q2 2022. Advice that power would not be separated from the project, but case can be presented to the EPA Chair for consideration. Survey methodologies can be provided to EPA for review.	Welcomed advice and will arrange for methodologies to be submitted, with no further action at this stage
28/7/2021	2	Meeting	Meeting to obtain updates on Noongar Standard Heritage Agreement (and related) processes	Michael Everitt, Glenda Stirling (phone)	ME provided project background and update to new SWALSC lawyer, and asked for advice on new system and how to proceed through it	Project requirements	Advised new system not yet fully bedded down and that stakeholder has been tasked with assisting new ILUA groups form, and to assist with progressing NSHAs and providing advice in the meantime	SDJV to submit request for new NSHA over project areas not yet covered by a NSHA. No further action at this stage
10/08/2021	3	Meeting	Initial meeting with new Great Southern Development Corporation CEO	Glenda Stirling	Project history including GSDC Southdown Working Group role, current project status, provided some Fact Sheets for information	project update	Asked for project history and current status. Asked that Grange keeps in touch regarding timing of reconvening the GSDC SDWG	Glenda Stirling confirmed that Grange would keep in touch re Project generally, and SDWG specifically. They thanked Glenda for the update
10/08/2021	4	Meeting	Update for Dept of Jobs, Tourism and Science	Honglin Zhao, Michael Everitt, Dean Wang	Project background, overview of current work, discussion on interactions with government	Project Update	Requested contacts at EPA from recent meeting	ME provided attendance list from EPA meeting, and we gave our thanks
24/8/2021	5	Meeting	Attended Infrastructure WA stakeholder update	Glenda Stirling	Foundations for a Stronger Tomorrow' brochure - draft for public comment	project update	None directed at Grange / SDJV	Infrastructure WA continues to develop their State Infrastructure Strategy - aiming at 2042(!)
25/8/2021	6	Meeting	Informal meeting with SPA CEO	Sameer Chhikara	Project update, Port land access query, SPA proponency	project update	SPA CEO understood concerns raised by SC. Advised EOI should be responded to by SPA by mid Sept. SDJV to provide draft letter to SPA re proponency of Southdown Transshipping Project. See email from SC dated 25/08/2021	GS has requested Allens to draft proponency letter to SPA. Other actions depend on outcomes of EOI progress.
25/8/2021	7	Meeting	Initial briefing for Albany DBCA representative	Michael Everitt	Advice that we have commenced a PFS, working toward spring surveys, and want to meet during September for a detailed briefing	project update	Welcomed the heads up, recommended arranging the meeting promptly	Agreed to email stakeholders next week to check availability. They welcomed the approach and catch up
30/8/2021	8	Meeting	Informal meeting with City of Albany CEO (Impromptu meeting at local Covid vacc clinic)	Glenda Stirling	General conversation about the project (and other things) whilst in waiting room after COVID needle	project update	Asked about Project progress	GS advised we will make a meeting with City of Albany, probably within next 6 weeks approximately. No further action at this stage
2-3/09/2021	9	Meeting	Landowner meetings - Potential borefields	Glenda Stirling, Sameer Chhikara	Information about potential requirement for a borefield and a general project update	Project update / Borefields	<p>Landowners noted:</p> <ul style="list-style-type: none"> - A property may be listed for sale within the near future - That they would contact Grange should they wish to sell. - If there were opportunities for the broader community (students) to be involved in the spring surveys process for training/learning purposes - Permission was granted, subject to the approval of the property leasee - That no clearing of trees would not be accepted and that some areas of conservation/protection areas exist - Specifications regarding the type and scale of any infrastructure - The risk of fire to one property was significant and having access to a water source for fire fighting was supported - Requests for financial compensation including land - Concerns about third party access to the properties - A property has 6 Profit a'Prendres on it. 	Grange to amend borefield layouts to clarify/show infrastructure footprint and scale of proposed vegetation clearing required. Supplied updated plans and proposal to landowners (including details of operational requirements), as requested/agreed.
10/06/2021	10	Email in	Email from DWER re 'artesian' clarification	Peter de Broekert	Information about licensing requirements if water was defined as artesian	Borefields	Confirmation from Department of Water Environment Regulation that proposed bores are NOT within aquifers that are defined as artesian and therefore don't require a groundwater licence. Info fed back to stakeholders.	Peter de Broekert advised that DWIR advice shows licensing not required
8/09/2021	11	Email out	Submission of survey methodologies for EPA feedback	Caroline La Fontaine	Provision of four surveys methodologies for EPA Feedback. Methodologies for GDE, Stygofauna, Botanical and Fauna	Borefields	Query from stakholder regarding proposed areas cleared. sent 23/09/2021	Response sent Helen Buttersworth at EPA 23/9/2021. Advice included that the OTSF will not be included in the upcoming Revised Proposal application. Email dated 23/9/21 from Helen Butterworth outlining feedback from Terrestrial Ecosystem Branch. E mail indicated all borefield investigation areas require flora survey.
10/09/2021	12	Phone call out	Permission to access land for survey	Glenda Stirling	Detail of survey process and equipment involved access required and names of surveyors given to landowners	Land Access	Access granted except in one case	Existing landowner relationships so sentiment was largely positive and access was given in most cases. One landowner declined due to philosophical views on farming practices and feeling impinged upon by other activities in the area and therefore doesn't want to provide access for this survey
13/9/2021	13	Meeting	2021-2022 Great Southern Budget Briefing	Glenda Stirling	Premier Mark MacGowan presented budget briefing	Project Awareness	Nothing in relation to Grange or Albany Port	Not available
20/09/2021	14	Meeting	Progress Lots 60/61 EOI at Albany Port	Sameer Chhikara, Michael Everitt, Glenda Stirling	EOI submitted to Albany Port 25th June 2021	Albany Port	Asked for further explanation of SDJV's commercial proposals in EOI	Various options discussed, Grange to consider key milestones to demonstrate progress as conditions for a lease. South Down joint Venture /SPA committed to discussing further
21/9/2021	15	Phone call out	Return call to landowner	Glenda Stirling	Status of groundwater exploration. Glenda Stirling also seeking information on Manypeaks Progress Assoc.	Groundwater availability	A landowner mentioned that the issue of using groundwater was raised a year ago at a 2020 Manypeaks Progress Assoc meeting and locals were upset (post Geddes water drilling) however we don't know the detail of why they were upset because we were not there but may assume it is the concern of environmental impacts.	Provided Manypeaks PGA contact details to Glenda Stirling S. GS committed to including Manypeaks PGA in stakeholder engagement. CM very appreciative of update and phone call and thanked GS
22/9/2021	16	Email out	Formal SDJV letter	Honglin Zhao, Atsushi Koga	Letter requesting Southern Ports Authority (SPA) to confirm they will be Transshipping proponent	Transshipping	Will respond asap	A further request made, and as of 9/8/22 is still being followed up. Stakeholder response unavailable

Southdown Magnetite Project - Stakeholder and Community Interactions Register (STAKEHOLDERS DE-IDENTIFIED)

This spreadsheet presents the community and stakeholder engagement and communication activities undertaken during the PFS and pre-referral phase of the Southdown Magnetite Project. It provides an overview of feedback received, Grange's response to the feedback, and the outcomes/resolution following the engagement.

Date	ID	Event type (i.e. Phone call in/meeting/Email out)	Description	Project attendees	Key information provided to stakeholders	Feedback summary (i.e. Borefields, land access, project update)	Stakeholder feedback (comments / concerns)	Stakeholder/Grange response, action, commitments and outcome(s)
10/07/2021	17	Email out	Outlining historic approvals in relation to power supply	Caroline La Fontaine	Email outlining historic approvals strategy will be applied for transmission line, with Alinta as proponent rather than WP. Attached Alinta business case demonstrating SDJV 'foundation' customer only	Power supply	Thank you for update email dated 22/10/2021	Alinta to contact EPA directly going forward
19/10/2021	18	Meeting	Progress meeting	Glenda Stirling	Project background / current progress	project update	Agreement to continue to work together for upcoming stakeholder engagement	Thanks for meeting. No further action required at this stage
19/10/2021	19	Meeting	GSDC Meeting	Glenda Stirling	Purpose of requested GSDC SDWG meeting - Dec 2021	Project update	To update GSDC Officer on Project progress and seek his advice on when to have SDWG meeting	Grange committed to provide requested details. They will send invitation to SDWG members once content is provided.
22/10/2021	20	Meeting	Environmental approvals meeting with SPA	Glenda Stirling, Caroline La Fontaine, Jackie Boyer	Update on environmental approvals for all present.	Approvals	Agreement for meetings/ Significant Issues Workshop to progress environmental approvals. SPA feedback that current BMT modelling issues will delay approvals.	GS will advise
22/10/2021	21	Meeting	Progress meeting	Glenda Stirling, Caroline La Fontaine, Jackie Boyer, Peter de Broekert	Update on Southdown Project, planned spring surveys, water supply investigations	project update	DBCA/DWER appreciated the updated. Asked that we share spring survey methodologies with them. Provided information on DBCA/DWER data available that may assist surveys and assessments.	Followed up by email re DBCA/DWER data
11/10/2021	22	Email out	Request for information	Jackie Boyer	Following up on potential data sources from DWER that could be used in assessment work for Southdown Project Provided the following: Southdown Project presentation; GDE Survey and Mapping; shape files of project footprint; RIWI bed and banks permit requirements & methodologies for tech studies on aquatic fauna studies.	Request for information	Stakeholder provided 'healthy rivers assessment methodology.'	Information received and thanks given
1/11/2021	23	Phone call out	Landowner calls for survey access	Glenda Stirling	Requests for access to their land for the purpose of conducting five different Environmental surveys. Provided details of the surveyor, and the process involved, for each of these different survey's : Acid Sulfate Soils; Aquatic Fauna; Flora (Mala/Damian); Terrestrial Fauna; Heritage. We explained the process in terms of how they would be undertaken walking? looking? note taking? picture taking? instrumentation? Digging?).	Land Access	Out of the 120 landowners contacted only 2 landowners denied access for the following reasons : A- They have experienced too many different projects encroaching on their land and business over the past few years, and don't want any more encroachment. B- This landowner is philosophically opposed to mining (and modern farming techniques) of the environment impact	To ask if they needed any further information for them to agree, and then to respect their decision. We will keep them informed and involved. Landowner B came to the project update community drop in session.
14/12/2021	24	Meeting	Project update	Glenda Stirling, Mike Everitt, Bridget Williams-Stephens, Caroline La Fontaine, Jackie Boyer, Viv Warren	Project update presentation 'Southdown Project Overview Dec 2021 GSDC'	project update	They want the project to proceed for the benefits it will provide to the broader community	Questions raised answered at meeting. Further updates will be provided as project progresses. Stakeholders encouraged to contact project office whenever they need more information or clarification
23/12/2021	25	Phone call in	Phone contact about land impact by L70/185	Mike Everitt	Advice that we have no interest in parts of L70/185 that lie over Lot7018, general discussion on water supply and impacts, community info, potential revegetation areas and seeking input from landowner	project update	Appreciated feedback, welcomed written confirmation on Lot7018. Looks forward to info on groundwater for community.	Mike emailed brief summary advising no interest in Lot 7018. Provided summary to Glenda, suggest to follow up with him re mine closure when that progresses. The e-mail was gratefully received by stakeholder
18/1/22	26	Workshop	JV Marine Risk Assessment Workshop	Glenda Stirling, Sameer Chhikara	Facilitated workshop, SDJV gave Project update and shipping information	A feasible way forward, re anchorage location, seems to have been found	See minutes from meeting 'Southdown project marine risk assessment TalkBook - 180122'	Agreement to progress on anchorages presented to and supported by Harbour Master who committed to assisting progress of the project
7/02/2022	27	Meeting	Update GSDC staff member filling in for a representative on leave	Glenda Stirling	Project background	project update	Appreciated meeting and update	No response from Grange required action at this stage. The update was appreciated by the stakeholder
23/02/2022	28	Meeting	Project update to SPA PCCC	Glenda Stirling	Project update	project update	Comments from stakeholders expressed interest and support	Committed to continue to engage
3/03/2022	29	Donation	Donation to Wellstead P&C for Footy Tipping Comp	Glenda Stirling / Karl Rost organised	\$50 Voucher	Community contribution	Wellstead P&C were very appreciative	Consideration given to repeating at a later date. This contribution was noted in the Wellstead Whisper 2/3/22
4/03/2022	30	Meeting	Project update	Mike Everitt	Project Update presentation (based on GSDC Jan version)	project update	Appreciated meeting and update. JTSI who attended the GSDC meeting recommended other staff also have a walk through. He advised the project would be suitable for possible State Significance once more commitment is made by project.	Forwarded on copy of presentation, made slight updates to GSDC version to bring up to date, nothing substantial. To send details on the MS846 extension of term being held up in EPA. The department of Jobs Tourism Science and Innovation (JSTI) recommended that we meet for an update every 6 months or so . They will look into MS846 but noted as that as Southern Ports Authority is the proponent that it requires proper channels of communication.
29/03/22	31	Meeting	Project update	Glenda Stirling/Bridget Williams-Stephens	Project update	project update	Very much appreciated the update .	Grange committed to keep in touch and respond to requests for further updates
22/03/22	32	Email out	To share announcement from Australian Securities Exchange (ASX)	ASX ANNOUNCEMENT	ASX ANNOUNCEMENT	ASX ANNOUNCEMENT	N/A	N/A
25/03/22	33	Email out	Project update	Glenda/Bridget	Project update information	request to use habitat map for research	Information received is sufficient for their needs- thank you	None required
29/03/22	34	Meeting	Project update	Glenda Stirling/Bridget W-Stephen	Update on Southdown Project	Project update	Very positive response from CEO and Mayor & Deputy Mayor. Keen to be involved. meet every 2 months.	Commitment made for continued engagement.
29/03/22	35	Meeting	Landowner meeting to gain commitment for borehole	Glenda Stirling, Bridget W-Stephen	Borehole location and project update	Boreholes /land access/project update	Very positive response. Feels that the project will be good for Albany's economic development.	Commitment made for ongoing conversations.
4/12/2022	36	Email out	Induction with ABP	Bridget W-Stephen	Heritage survey prep	Essential for project attendee to gain land access safely to help conduct survey	Induction passed successfully	Commitment made in line with implementing due diligence.

Southdown Magnetite Project - Stakeholder and Community Interactions Register (STAKEHOLDERS DE-IDENTIFIED)

This spreadsheet presents the community and stakeholder engagement and communication activities undertaken during the PFS and pre-referral phase of the Southdown Magnetite Project. It provides an overview of feedback received, Grange's response to the feedback, and the outcomes/resolution following the engagement.

Date	ID	Event type (i.e. Phone call in/meeting/Email out)	Description	Project attendees	Key information provided to stakeholders	Feedback summary (i.e. Borefields, land access, project update)	Stakeholder feedback (comments / concerns)	Stakeholder/Grange response, action, commitments and outcome(s)
4/12/2022	37	Meeting	DWG file creation for Fact Sheet	Bridget W-Stephen	Shared mapping information to inform creation of user friendly pictorial fact sheets	Create customer friendly fact sheet with simple pleasing maps	N/A	user friendly information sheets created for distribution to stakeholders
4/11/2022	38	Meeting	Borefield Landowner Access	Glenda Stirling, Sameer Chhikara	Borehole location and project update	To gain agreement for access.	Happy to sign access with some amendments	Committed to make amendments and landowner is happy to sign once amendments are made.
4/11/2022	39	Meeting	Borefield Access	Glenda Stirling, Sameer Chhikara	Borehole location and project update	To gain agreement for access. Forwarding information to their hierarchy for comment and decision making	They will forward info to their head office in Melbourne. They were very busy. This is not their core business and they would get to it in weeks or months	We said we were very appreciative of them forwarding it on and would await their response
4/11/2022	40	Email out	Alignment of Stakeholder engagement plan with SPA	Glenda Stirling	Stakeholder document	To align engagement	Comments received from SPA and verified,	Commitment to incorporate feedback into Grange documents
5/09/2022	41	Email in	Port property owner concerned about proposal	Glenda Stirling	Contacted to organise to meet to discuss concerns.	Project overview, dust emissions, visual impact, and proposed mitigation measures	Property owner concerned that there may be dust from the transshipping loading process and that new infrastructure may impact her view	Meeting with Glenda and Bridget on 7/6/22. Commitment made to respond to any further questions from her or her neighbours . Said she appreciated us having contacted her . After the meeting on 7/6/2022 she said she now has a better understanding and will pass the information onto her neighbours too.
5/10/2022	42	Meeting	Enquiry & Information	Glenda Stirling/Bridget W-Stephen	Project update (verbal)	Local Government approvals required/process we need to be aware of	Strategic: Offered to arrange a City of Albany liaison group to meet periodically. Operational: Suggests involvement of Environmental Health Officers in early development plans for the mine camp	Meet new liaison/engagement group hosted by COA, in June. Source early camp development plans and send to Tom.
5/10/2022	43	Meeting	Enquiry & Information	Glenda Stirling	Project update (verbal)	Compare dates of COA major events, with project plans	Very pleased to have the opportunity to share information and compare notes.	Future engagement through COA Liaison group to check on any clashes with project activity
5/10/2022	44	Meeting	Confirmation of their new boundaries related to easements	Glenda Stirling/Bridget W-Stephen	Clarified reason for the meeting	To confirm their revised plans for the bypass and check whether they impede project activity /slurry pipeline	Main roads reps appeared to appreciate having the meeting and thanked us. They said that "there would be no impediment to main roads plans or projects, from Grange project. none that couldn't be dug up easily anyway"	Committed to regular engagement through Great Southern Development Corporation SDC or as required.
17/5/22	45	Email in	Change to primary lead of liaison group at City of Albany(COA)	Glenda Stirling/Bridget W-Stephen	Date of next meeting- invitation	Project Update and collaborative work	Name of Lead Contact for liaison meeting at COA provided	Meeting arranged for 14/6/22
17/5/22	46	Phone call in	Enquiry & Information	Glenda Stirling	Relevant project update	Project Update	Will come back to Grange if more info required	
17/5/2022	47	Email in	Potential Albany events clashing with project activities	Glenda Stirling/Bridget W-Stephen	Project update and potential key dates where collaboration might be possible	Project update	Very appreciative of contact and committed their help and support	Committed to regular update and collaborative work where relevant
19/5/22	48	Email out	Proactive contact with sensitive receptor	Bridget W-Stephen	Invitation to meeting to discuss project	Sensitive receptor (visual/noise)	Resident is very happy to be involved in any way that is helpful. Grange committed to keep in touch and update as and when required	Not Available
19/5/22	49	Phone call in	Slurry pipeline landowner enquiry	Glenda Stirling / Karl Rost	Information on slurry pipeline easement width and licensed area width	Project update	Landowner was seeking clarification on easement width on her property and what she was permitted to do on the easement	Karl called her back and explained the 10 metre easement area and the further 15 metre licensed area and the possible infrastructure start time of 2-3 years. Mailed stakeholder some fact sheets on magnetite and slurry pipeline. Karl was thanked for the update.
19/5/22	50	Phone call in	Local Elder expressing concern with survey member list	Glenda Stirling	The list of survey people was provided by key stakeholder, Grange not involved in selection of members	Anthropological Surveys	Concerned that there are 2 lists of people chosen to do the Anthropological surveys, and that they do not represent local families who have lived on the land for centuries . Asks that the surveys are delayed until this is resolved.	Meeting arranged with stakeholder concerned. Glenda Stirling also called Joe Mattner (Heritage consultant) to discuss and sent out email to Joe and Paul Greenfield (Archaeologist) who will be leading the survey team, asking for advice. Outcome - new list issued reducing the numbers to make 1 list and making it representative of local families and the survey went ahead).
19/5/22	51	Meeting	Engagement planning meeting with SPA	Michael Everitt, Glenda Stirling, Karl Ro	Agreed SDIV to lead engagement even though SPA will be proponent	Joint engagement strategy	New Regional Manager at Southern Ports to commence 18th July and will be included possibly lead their stakeholder engagement alongside Grange.	Plan to meet up with new Regional Manager as soon as possible following start date, to update him/her on the project and their proponent role . The outcome was that we met and Paul McSweeney the new Regional manager will be the main contact for the joint engagement strategy between Grange SJV and Southern Port Authority.
19/5/22	52	Meeting	Meeting with lawyers to discuss implications of harvesting pines on site	Michael Everitt, Glenda Stirling, Karl Ro	Grange query is what implications this has on env approvals	Allens understands issues including risk of 'commencing action' and will investigate	Advised that they should be able to harvest pines reasonably soon (starting this winter) if Grange agrees to novate the Profit a Prendre. Stakeholder will investigate forestry exemptions as it's ENTs that wants to harvest and it's a commercial plantation	Will await feedback. Stakeholder will investigate and respond to Grange in due course
24/5/22	53	Phone call in	Job opportunity enquiry	Glenda Stirling	Relevant project information	project overview	Contact details left with Glenda	no relevant action to be taken at this stage
24/5/22	54	Phone call in	Job Opportunity enquiry	Glenda Stirling	Relevant project information	project overview	Contact details left with Glenda	no relevant action to be taken at this stage
24/5/22	55	Email in	Information about an engagement forum	Glenda Stirling	Thank you for sending through the information	Engagement opportunity	Keen to promote collaborative engagement	Requested date & time & venue and make up of group and await invitation to the meeting in September.
24/5/22	56	Phone call out	To connect with a local resident of Goode Beach who is also considered a community leader, and offer to meet with him	Glenda Stirling/Bridget W-Stephen	Project update and offered to meet with him	Project update	The homeowner overlooks the harbour and during our update, at his house, we discussed our concerns with him and his wife, about potential visual impact of a cap sized vessel being anchored out in the ocean directly opposite his house and therefore opposite the Goode Beach community . He said that the anchorage is far too far away, that they couldn't even see the QEII vessel when it was out there, so that we should be reassured that neither the transshipping vessel, nor the cape sized vessel will have an adverse visual impact. He is very happy and willing to continue to support our community engagement	Resident was offered a meeting and invited us to go to his home overlooking King George Sound at Goode Beach. So he and his wife hosted the meeting at their house. The Southdown Project Director, Southdown Managers & Southdown Engagement staff attended. We Committed to continue engagement and invited him to the project update community Drop in sessions. He hoped to come but was unable to attend.

Southdown Magnetite Project - Stakeholder and Community Interactions Register (STAKEHOLDERS DE-IDENTIFIED)

This spreadsheet presents the community and stakeholder engagement and communication activities undertaken during the PFS and pre-referral phase of the Southdown Magnetite Project. It provides an overview of feedback received, Grange's response to the feedback, and the outcomes/resolution following the engagement.

Date	ID	Event type (i.e. Phone call in/meeting/Email out)	Description	Project attendees	Key information provided to stakeholders	Feedback summary (i.e. Borefields, land access, project update)	Stakeholder feedback (comments / concerns)	Stakeholder/Grange response, action, commitments and outcome(s)
24/5/22	57	Phone call out	Seek permission for land access	Bridget W-Stephen	Existing relationship with these landowners, so simple call, to introduce new engagement staff working for Grange, and seek permission to access land for survey purposes	Seek access for archaeological/anthropological survey	Access granted	Informed by e-mail
24/5/22	58	Phone call out	Seek permission for land access	Bridget W-Stephen	Existing relationship with these landowners, so simple call, to introduce new engagement staff working for Grange, and seek permission to access land for survey purposes	To seek access for archaeological /anthropological survey	Access granted	Informed by e-mail
24/5/22	59	Meeting	Concerns raised by local Elder re planned heritage surveys	Bridget W-Stephen Glenda Stirling	Listened; Described process project has taken with key stakeholders	Seeking a collaborative way forward that works for all, each recognising responsibilities	Suggests we postpone any project update session with the Heritage group until the anthropological survey group members have been confirmed.	Contact project's Heritage Consultant to liaise with SWALSC if appropriate. Committed to continued connection between local Elder and project as required.
25/5/22	60	Meeting	Meeting to respond to landowner concerns	Glenda Stirling/ Bridget W-Stephen	Project update	Landowner seeking clarity	Their flower business requires 5-6 yr planting process. They need to build more sheds they want clarity on land purchase	Grant & Michael to visit on Wednesday 1st June. The landowners are looking forward to the meeting .
25/5/22	61	Meeting	Borefields update	Glenda Stirling/Bridget W-Stephen	Update re-borehole location and discussed the function of monitoring bores	Borefields	Say they appreciate being kept informed	Committed to keep the landowners updated, and respond to requests to do so
25/05/22	62	Meeting	Project update and enquiry about any new sensitive receptors	Glenda Stirling/Bridget W-Stephen	Project Update	project update & new sensitive receptors	No new sensitive receptors; heard radio program and asking why Grange was not available for comment	Explained that Grange Head Office was not available - no 'green light' given at that point. Feedback to Grange head office made.
31/5/2022	63	Meeting	Port User Meeting	Grant Bramich, Mike Everitt	No input required, presence only	SPA staff mentioned SDN as part of operation several times	Good to hear several staff mention the project by name in a positive light	Thanked stakeholders post meeting
31/5/2022	64	Meeting	GSDC SDWG Update	Grant Bramich, Mike Everitt	Study (project) update presentation Southdown Project Overview 31 May 2022 GSDC v11.pptx	project information and update	A range of questions raised from the floor and online	
31/5/22	65	Meeting	Project update for Local Councillors	Grant Bramich, Michael Everitt, Bridget	<p>Questions were answered as they were asked. Project timeline?- Q4-25 for first ore on ship. Pipeline, labourforce numbers required?- 300 plus in shifts when operational</p> <p>Anchorage and loading mechanisms?, diagram of anchorages shown, closed self loading mechanisms planned to be used.</p> <p>De-salination? - If we expand we will need Power ? Alinta,</p> <p>Capex estimations?, \$80 per ton</p> <p>Life of the mine? 28yrs,</p> <p>Water availability? Waste water to be made available, groundwater, Desal possibly, need 5.3GL/a.</p> <p>Any approvals required from Council?, environmental health for the build of the village that we know of so far</p> <p>Regarding the 2026 bi-centenary could we be a partner for community outcomes and sponsorship purposes? Glenda Stirling /Bridget Williams meeting with the council's planners regularly to keep track of this as we go forward.</p>	project information and update	Very appreciative and excited for Albany. Many insightful questions on - Project timeline, Pipeline, labourforce numbers required, Anchorages and loading mechanisms, De-salination, Power accessibility, Capex estimations Life of the mine, Water availability , Any approvals required from Council, Link to 2026 bi-centenary could we be a partner for community outcomes and sponsorship purposes.	All questions were answered by Project Director Grant and Project Manager Mike . Commitment to ongoing updates and liaison with elected members and officers. The Mayor, the CEO of the Council, and all of the 12 Elected members in attendance gave full and unreserved support for the project. The Mayor's last words were " "we all think it is great ...now just get on and do it !!!"
1/06/2022	66	Meeting	Visit landowner to hear concerns	Grant Bramich, Michael Everitt	Broad verbal update on progress of project, listen to concerns for business planning. GB advised he will discuss with MD and maintain communications with the family. They were very appreciative of the visit and look forward to further feedback updates and meetings.	Discussion on project update	Concerned on timing to make business decisions, welcomed greater clarity around plans. Advised they need to make business decisions to proceed with new plantings which take a minimum of 6 years to produce. Need to know timeframes of when dust generation may impact their flower crops and when (if) Grange will purchase their property. They will need proceeds of sale to purchase replacement land and looking for agreement on a path forward	GB advised he will discuss with MD and maintain communications with the family. They were very appreciative of the visit and look forward to further feedback updates and meetings.
1/06/2022	67	Meeting	Meet staff and view facilities	Grant Bramich, Michael Everitt	General discussion on timing of the project and potential short term use of facilities to host site visits, meetings. Staff provided a tour and noted capacity to cater.	General update and interest in holding information sessions there or at hall	Welcome providing facilities and assisting with organising and catering as required. Thanked staff and will maintain communications	Thanked staff and will maintain communications
1/06/2022	68	Meeting	Visit to meet landowner	Grant Bramich, Michael Everitt	General verbal discussion on progress of the project. GB advised we will maintain communications and review the agreement before the end of the year.	General update on timing and activities	Welcomed making contact and noted expiry of desal option agreement later in year. Noted expiry of desal option agreement at end of year and interest to align future lease payments to land values.	Will maintain communication and initiate discussion on option deed in due course
1/06/2022	69	Meeting	Visit to meet landowner	Grant Bramich, Michael Everitt	General verbal discussion on progress of the project. GB advised we will maintain communications.	General update on timing and activities	Welcomed making contact and reinforced support of project. No specific concerns raised.	Will maintain communications
7/06/2022	70	Phone call out	Heritage survey progress	Bridget W-Stephen	Information update	Heritage Survey List	Key stakeholder to create a new list -via new cultural team to be elected on 11th June	Liaise again in 2 weeks time. Local Elders are very pleased with this decision. Project update offered for heritage group as planned. We will await feedback about a date for this.
7/06/2022	71	Phone call out	Joint engagement with port	Bridget W Stephen	Approach to demonstrate landowner perspective/visual impact & joint meeting arrangements	Visual impact perspective	Not available	Joint meeting with coastal landowner Tues. 14th tbc
13/6/22	72	Meeting	Offsets Discussion	Michael Everitt, Caroline La Fontaine, J	Spreadsheet containing proposed offset sites	Offset sites required for existing Commonwealth approval	Difficult to find appropriate sites within 20km of mine site	DBCA confirmed it is undertaking and assessment of Grange's "high priority targets" and will update DBCA's site specific comments in the spreadsheet

Southdown Magnetite Project - Stakeholder and Community Interactions Register (STAKEHOLDERS DE-IDENTIFIED)

This spreadsheet presents the community and stakeholder engagement and communication activities undertaken during the PFS and pre-referral phase of the Southdown Magnetite Project. It provides an overview of feedback received, Grange's response to the feedback, and the outcomes/resolution following the engagement.

Date	ID	Event type (i.e. Phone call in/meeting/Email out)	Description	Project attendees	Key information provided to stakeholders	Feedback summary (i.e. Borefields, land access, project update)	Stakeholder feedback (comments / concerns)	Stakeholder/Grange response, action, commitments and outcome(s)
14/6/22	73	Meeting	Joint engagement with Port	Paul Mackey, Glenda Stirling, Bridget W	Information about the project	Insights into Engagement approach best used for Goode Beach residents	Very positive. Anticipate it to be of low concern to majority of Goode Beach residents. Will support engagement of local members of parliament	Continue to keep local stakeholder informed. Local stakeholder invited us to his property to view the anchorages and assess visual impact.
14/6/22	74	Workshop	COA Bi-centenary planning workshop	Glenda Stirling, Bridget W-Stephen	Contact details	Example of style of engagement workshop	Welcomed to attend	Observation of a style of engagement workshop and venue
21/6/22	75	Email in	Engagement with Goode Beach resident	Bridget W Stephen, Glenda Stirling, Pau	Visual impact concerns	Visibility of Anchorages	Resident proposed an engagement approach based upon his experience of working within this community and his vast experience of community engagement strategy	Email of appreciation and acknowledgement. Commitment from resident for continued community engagement advice and support
21/6/22	76	Email in	Cultural Survey	Glenda Stirling	Cultural Survey	Evidence of any aboriginal cultural material	No evidence of any aboriginal cultural material at bore locations in Wellstead / Manypeaks or tree farm. Not surveyed ethnographically. Won't matter if locations are disturbed as Bore's located in areas already disturbed.	Key stakeholder informed. No further feedback from stakeholder.
28/6/22	77	Phone call out	Botanical Survey Prep	Bridget W Stephen	Dates of proposed botanical survey on their land	Survey evidence of any remnant native vegetation changes	Approval granted in all cases	Contact details and notes for access sent to consultants. All landowners are content except 1 who wants to re-negotiate the terms of her easement. Glenda Stirling will follow up.
28/6/22	78	Phone call out	Archaeological Survey Prep'	Bridget W Stephen	Dates of proposed archaeological survey on their land	Survey evidence of anything of archaeological significance	Approval granted in all cases	Contact details and notes for access sent to Archaeologist. All landowners spoken to are content. One request for a copy of the resulting report noted on file.
7/04/2022	79	Meeting	Offsets Discussion	Caroline La Fontaine, John Morrell		DBCA internal consultation	DBCA regions yet to confirm responses	Because of lack of feedback from DBCA regions DBCA has yet provided feedback on Grange's "high priority targets"
7/06/2022	80	Email out	Offset Information	Caroline La Fontaine	Revised Offset Register			
18/7/22	81	Meeting	Offsets Discussion	Caroline La Fontaine, John Morrell	Updated version of Grange proposed sites spreadsheet	DBCA internal consultation	DBCA has additional prospective sites	Grange pointed out that sites BDG&E were favoured because they represent Commonwealth's requirements and are within 20km of mine, columns to be added indicating reasons why properties are not prospective and mining tenure, DBCA to investigate additional sites.
26/7/22	82	Meeting	Planning issues discussed	Glenda Stirling	The City of Albany plan for projects all year, we felt it important to link up, share information about key dates and topics to look for potential for collaborating on engagement with shared stakeholders, and avoiding any clashes	Project information sharing and collaborative working with local government where applicable and relevant	Appreciated meeting and opportunity to comment and discuss provision/sharing of information(for example slurry pipeline shape files following this meeting). This was largely an introduction and rapport building meeting. We agreed it will be useful to meet every 2 months to compare project timelines, look for opportunities to collaborate on engagement activities, and avoid project clashes.	Slurry Pipe shape file sent to COA. The info provided will begin ongoing two monthly meeting schedule planned and agreed to begin with.
26/7/22	83	Phone call out	To gain land access	Bridget W Stephen	Purpose for needing access	Land Access for botanical survey	Land access granted	Surveyor notified that Botanical survey can go ahead
26/7/22	84	Email out	Response to request for funding help	Bridget W Stephen	Stage and scope of project	Funding request	Appreciated the call back and understands we are not a hot prospect for them	Committed to e-mailing head office with information
2/08/2022	85	Meeting	Port resident with concerns/queries	Glenda Stirling, Bridget W-Stephen	A full project update was given to resident, referring to the presentation the Director had given to the GSDC. This answered her questions regarding timeline and emissions for the time being. We took two questions on notice	Residential concerns re impact of the project	Concerns raised: The Economic, social and environmental impact of the infrastructure development. Wanted information on the proposed timeline for the construction and operation of the port; The likely emissions from the port in terms of dust, noise and smell; the mitigation measures to be put in place for the above. She also would like any other information we can give her about the project. Raised about dust and noise impacts. Resident joined the port consultative committee following Glenda's recommendation.	Answers to the two 'on notice' questions re port monitoring equipment storage & storm water management. Questions taken on notice on 2/8/22, were answered by e-mail to the resident, on 9/8/22. Saying: Re Monitoring equipment- That level of detail has not been decided upon yet however the locations will be determined in line with the Australian Standards and regulatory requirements subject to an appropriate assessment. Re Storm water management - A good question thank you, at the appropriate point in the project technical consultants for the land side tasks (as opposed to water side) must be able to answer in line with all regulatory requirements. Our broad understanding is that there will be 2 streams of stormwater with the majority to be harvested as a sustainable source and returned to the mine for re-use. Some minor sources will be dealt with in situ via regulatory approved designs.
2/08/2022	86	Meeting	Engagement & relevant project update	Glenda Stirling, Bridget W-Stephen	Forestry considerations, viability and opportunities	Environmental & commercial	Appreciated and valued the engagement	Engagement to continue
9/08/2022	87	Email out	Community Support	Glenda Stirling	\$500 donation for a community event	Community Support	Appreciated the financial support	No response from Grange required, they appreciated the support. At the Wellstead Project update Community drop in session Nov 2022, a local person mentioned this donation and acknowledged that it was a sign of the good that the project could do for the community..
9/08/2022	88	Meeting	Project Briefing	Glenda Stirling	Full Project briefing	Full project briefing	Committed to including project updates in their newsletters about project community networking events; and hosting a business breakfast.	Thanked the stakeholder
9/08/2022	89	Meeting	Discuss proposed borefield	Glenda Stirling, Karl Rost	First meeting. Drove to farm to discuss proposed borefields and to supply a copy of a draft of the access agreement. Probable lease terms and conditions.	Borefields, land access	Positive feedback offered. Supportive of a borefield being established on his property, will read access agreement and discuss	Grange committed to make contact for further discussions. Landowner e-mailed on 10/8 that he wanted his lawyers to review at Grange's expense. Glenda requested a cost estimate for that.
15/8/22	90	Meeting	DBCA provided feedback on sites	Caroline La Fontaine, John Morrell		Existing and new offset sites	DBCA interested in progressing additional sites	DBCA provided feedback on existing sites and presented a number of potential additional sites within and outside 20km range
16/8/22	91	Email in	DBCA provided feedback on sites	Anne Greig	Offset site information (mapping / spreadsheet)	Existing and new offset sites	DBCA interested in progressing additional sites	DBCA sent updated table with feedback on existing sites and information on a number of potential additional sites within and outside 20km range
17/8/2022	92	Email out	Land access for ethnographic survey	Bridget W Stephen, Paul Greenfield	Date and time and duration of anticipated survey, what the survey comprises of.	Desalination pipeline land access	Access granted	Committed to arrive before lunch on 24/8/22, Stakeholder flexible and doesn't mind what time.
18/8/2022	93	Meeting	Proposed bore fields and monitoring wells	Glenda Stirling, Karl Rost,	Supplied a draft copy of access agreement and an information sheet explaining the monitoring bores	Borefields access/monitoring	Positive feedback offered. Requires a biosecurity clause/further ground water info on replenishment. Landowner continues to be supportive of the project generally, and committed to continuing discussions about establishing a borefield on his property.	Grange reps to visit stakeholder for further ground water discussion, internal discussion on biosecurity issues

Southdown Magnetite Project - Stakeholder and Community Interactions Register (STAKEHOLDERS DE-IDENTIFIED)

This spreadsheet presents the community and stakeholder engagement and communication activities undertaken during the PFS and pre-referral phase of the Southdown Magnetite Project. It provides an overview of feedback received, Grange's response to the feedback, and the outcomes/resolution following the engagement.

Date	ID	Event type (i.e. Phone call in/meeting/Email out)	Description	Project attendees	Key information provided to stakeholders	Feedback summary (i.e. Borefields, land access, project update)	Stakeholder feedback (comments / concerns)	Stakeholder/Grange response, action, commitments and outcome(s)
22/8/2022	94	Email out	DBCA Landowner approaches	John Morrell	Request to contact landowners about sites	13 potential offset sites	not available	DBCA requested and subsequently agreed (email of 22/8/22 from DBCA) to contact owners of 13 potential offset sites
24/8/2022	95	Email in	Request from Alinta Energy to review their new website in relation to the project	Glenda Stirling	Alinta's Website draft reviewed and edited	Energy Supply for the project	Alinta asked Grange to review the wording prior to it being published	Grange reviewed the draft and offered some revised wording. Stakeholder response unavailable
7/08/2022	96	Meeting	Waterbore and monitoring bore locations	Karl Rost, Bob Kinnell, Wade driller	Bore locations and access requirements	Borefields /land access	Appreciative of Grange's discussion on the lay of the areas ground water and was happy for things to move forward in regards to monitoring bores and access gate from neighbouring property.	Grange will now go ahead with the monitoring bore installation and talk toneighbour in regards to access gate y
7/09/2022	97	Meeting	Waterbore and monitoring bore locations	Karl Rost, Bob Kinnell, Wade driller	Bob Kinnell spoke to landowners regarding bore locations and land access requirements, explained about separated aquifers in the area	Borefields, land access	Questions regarding the separated aquifers. Christine Metcalfe spoke of some locals been unsure of the borefields effect on ground water, Karl Rost explained how the Community dropin sessions would work and how there would be an opportunity to answer any of the locals questions on all facets of the project. Landowner was happy for the monitoring bores to go ahead	Waiting for block to dry out, encouraged landowner to attend dropin session to view drill samples showing aquifer separation
7/09/2022	98	Meeting	Landowner permission to install gate	Karl Rost, Bob Kinnell, Wade driller	Meet with plantation representative at the gate he showed Bob Kinnell and the driller to the bore locations	Borefields, land access	Representative was happy to show them around	Waiting on landowner approval to drill
9/09/2022	99	Phone call out	Landowner permission to install gate	Karl Rost, Lach Macfarlane	Providing information to make it clear where the gate is proposed to be. Seeking permission to install a 3m gate to allow the drill rig to gain access to the neighbouring property	Borefields	Happy for the gate to be installed.	The installation of a 3m gate will be organised by Grange, keeping landowner informed of progress and date of installation.
12/09/2022	100	Phone call out	Provide update and get permission to enter Lot	Michael Everitt	Update on general timing and study progression, consideration of locating some infrastructure on Lot, site visits occurring	Lot 6842	Very happy to provide access, keen for project to proceed	Glenda will be visiting the site with a GHD engineer today
6/09/2022	101	Meeting	Site visit to peg Southdown monitoring bore locations and identify location of shallow piezo's, and update landowner	Bob Kinnell Hydro Geologist GHD engin	Bob explained in detail how the make up of aquafa's and the hydrogeological system. Glenda described water balance information which is still being calculated	Borefields and project update	Appreciated being able to meet up with us and the detailed explanation because he is going through the process of understanding it all. He said he likes to know the detail, and would like a map of the borefield when all in position	Thanks given to landowner for showing his interest and coming (half an hour distance) to meet us. Grange committed to ongoing liaison and Bob committed to send him a map of the eventual borefield.
6/09/2022	102	Meeting	Meet with Energy Policy WA to discuss power requirements	Grant Bramich, Geoffrey Han, Mike Eve	Discussion on power demand and project timing, general project update and discussion around timely progression with WP	Power Supply	Appreciated meeting and receiving an update	EPWA will feed this into a project reviewing total power demand to guide policy on sourcing and distributing energy
12/09/2022	103	Phone call out	Contact to arrange access for a visit to provide brief update	Mike Everitt	Project is progressing, some unidentified elements may come onto Lot, will have several visits to access the property	Land Access	Welcomed the contact, no issues with access, keen to see the project progress. Restated interest in purchasing any parts of Lot we would not use.	Thanked for access and advised we are looking to lock in a new GA over next few weeks and will discuss then the longer term outlook.
15/9/2022	104	Phone call out	Contact to arrange a meeting	Mike Everitt	Project is progressing and it is time to meet to provide an update	Land Access	Welcomed the contact and opportunity to meet, keen to see project go ahead, happy to meet in Albany in the next few weeks	Mike to confirm potential dates with Sameer and advise stakeholder to lock in a time.
2/09/2022	105	Email out	Project presentation for Dept Jobs, Tourism, Science and Innovation	Geoffrey Han	Company and Project background information, current status, Project schedule, request for assistance from Government	Project background	JTSI acknowledged the receipt of the presentation and forwarded to Major Project office to arrange meeting with Grange	A face to face meeting has been arranged with JTSI representative on Tuesday, 25/10/2022.
16/09/2022	106	Workshop	Attended Western Power SWIS Demand Assessment public forum	Geoffrey Han	WP presented the current power demand of the SWIS network and potential future requirement. Four resource companies also presented their road map to decarbonisation and power demand by 2030.	Power demand of SWIS	No particular comments. It's a public forum.	Grange team to continue work with Alinta and Wester Power to sort out the powerline corridor.
28/9/2022	107	Meeting	Project presentation and update for GSDC	Honglin Zhao, Dean Wang, Grant Brami	Project update presentation including current status (used JTSI presentation)	Continued support from GSDC	No concerns. Offered to follow up JTSI	Fact sheets emailed to GSDC (GSDC circulated to SDWG). GSDC offered the assistance of their accommodation specialist.
28/9/2022	108	Meeting	Port Tour	Honglin Zhao, Dean Wang, Grant Brami	SDIV given Port tour by SPA	Port	SPA committed to assisting project however possible	Thanks given to Port Authority for providing the tour
3-5/10/2022	109	Workshop	Albany Sandplain & Wetlands Forum 2022	Michael Everitt, Glenda Stirling, Bridget	SDIV members attended forum to gain information, learn of concerns	Borefields	Grange / SDIV commended for 'good data'. Groundwater extraction is a complex matter and it is difficult to fully understand the expert scientists who present at events like these	Grange team to workshop internally and with GHD & Rockwater to develop easy to understand explanations about groundwater extraction.
5/10/2022	110	Meeting	Update new GA neighbours	Michael Everitt, Sameer Chhikara	Project progress update. Current Sensitive Receptor work being undertaken	Project update	Understood our optimised project may not require 2 northern lots immediately, borefield pipeline needed.	GRL to provide finalised layout when ready and initiate discussions to secure access for eastern lots and pipeline routes
6/10/2022	111	Meeting	Update new GA neighbours	Michael Everitt, Glenda Stirling	Project progress update. Current Sensitive Receptor work being undertaken	Project update	Want clarity and certainty from SDIV about what will happen to their property and will SDIV purchase it	Advised DFS scheduled to be completed Feb / Mar 2023 which should give clarity
6/10/2022	112	Meeting	Update new GA neighbours	Michael Everitt, Glenda Stirling	Project update including new GA layout which means another property will be a neighbour	Project update	Stakeholder reconfirmed they decided years ago to be project supporters. Advised that the Project employing farm workers will be a concern raised by other farmers	Advised of drop-in days. Stakeholder advised they're unlikely to attend prior to February due to harvest and harvest preparation
6/10/2022	113	Meeting	Update new GA neighbours	Michael Everitt, Glenda Stirling	Project update including new GA layout which means another property will be a neighbour	Project update	Mainly worried about how much of the property he won't have access to anymore	ME/GS committed to re-engaging with neighbouring property once final GA known
30/09/2022	114	Email out	Southdown Magnetite Project Update info sheet	Glenda Stirling	Southern Magnetite Project Update Info Sheet for distribution	Project update info sheet	GSDC most happy to distribute to their members on our behalf.	GS thanked GSDC for distributing
14/10/2022	115	Email out	compliance audit Review - MS 904	Michael Everitt, Merrillyn Barnes	Compliance audit review of the desal plant MS 904	Audit review	N/A	N/A
18/10/2022	116	Letter out	Posted personalised invitations to attend Community Project Update drop in sessions	Grant Bramwich, Michael Everitt, Geoff	Information sheet and letter inviting and describing the event	Project info and update	N/A	Letters posted. Event being created. Further outcome unavailable
18/10/2022	117	Email in	Congratulatory personalised letter from local business	Glenda Stirling	Telephone call to thank them.	Project celebration letter	Congratulatory letter following the chamber of commerce briefing	Telephoned and informed of project update community sessions
18/10/2022	118	Email in	Chamber of Commerce update circular	Glenda Stirling	Project Update	Project Update	Letter of congratulations received	Thanks given to Chamber of Commerce. Commitment given to continue engagement

Southdown Magnetite Project - Stakeholder and Community Interactions Register (STAKEHOLDERS DE-IDENTIFIED)

This spreadsheet presents the community and stakeholder engagement and communication activities undertaken during the PFS and pre-referral phase of the Southdown Magnetite Project. It provides an overview of feedback received, Grange's response to the feedback, and the outcomes/resolution following the engagement.

Date	ID	Event type (i.e. Phone call in/meeting/Email out)	Description	Project attendees	Key information provided to stakeholders	Feedback summary (i.e. Borefields, land access, project update)	Stakeholder feedback (comments / concerns)	Stakeholder/Grange response, action, commitments and outcome(s)
24/10/2022	119	Email in	Request for Great Southern Development Commission to share project information	Glenda Stirling	Information sheet and letter inviting members to the project update drop in sessions on behalf of Grange	Project update drop in sessions	Great Southern Development Commission (GSDC) have forwarded a letter and info sheet inviting people to attend the project update drop in sessions. 38 letters sent on Grange's behalf. Very happy to promote this event on our behalf to all their members, and encourage their members to pass it on.	Thanks given to GSDC
25/10/2022	120	Phone call in	Enquiry about the project update drop in sessions	Glenda	Enquiring about project update drop in sessions and whether they have to book	Project Update drop in session	Asking if they need to book	Advised no need to book just pop in. NB Prepare information available about potential jobs related to mine in the future
20/10/2022	121	Email out	Request for Western Power to share project information	Geoffrey Han	Information sheet and letter inviting members to the project update drop in sessions on behalf of Grange	Project Update drop in session	N/A	Encouraged Western Power to distribute to colleagues
20/10/2022	122	Email out	Request for Alinta Energy to share project information	Geoffrey Han	Information sheet and letter inviting members to the project update drop in sessions on behalf of Grange	Project Update drop in session	N/A	Encouraged Alinta Energy stakeholders to distribute to colleagues
24/10/2022	123	Email out	Request for SPA to inform their stakeholders about the project update drop in sessions	Glenda Stirling	Information sheet and letter inviting members to the project update drop in sessions on behalf of Grange	Project Update drop in session	Non available prior to drop in sessions	Prepare for project update community drop in -sessions
20/10/2022	124	Email out	Invitation to come for a 1-1 project update	Glenda Stirling	Invitation to meet for a 1-1 project update	Project update	No response	
20/10/2022	125	Phone call out	Tried calling landowner twice regarding signing of s29 form	Karl Rost	N/A - no answer	Land access	N/A - no answer	Will try again in a few days
27/10/2022	126	Phone call out	Rang landowner regarding community sessions/bore fields draft agreement	Karl Rost	Reminded landowner of drop in dates, mentioned drill core sampels and asked if he has had a chance to have a look over the draft agreement.	Borefields/project update	He will try to attend the Manypeaks dropin session	We might need to take core samples to him if he doesnt attend dropin session.
27/10/2022	127	Phone call out	Rang landowner again regarding community sessions/S29 form.	Karl Rost	Reminded landowner of drop in dates and discussed S29 form.	Borefields	Would prefer to fill in S29 form once draft agreement has been finalised, he will be attending Wellstead dropin session.	We will leave S29 form until draft agreement has been finalised.
31/10/22	128	Email out	Project update Community drop in sessions	Sam Wright, Glenda Stirling	Project Update Drop in Sessions: Dates and times and locations and key information about what will be offered advertised on Grange website	Project Update	N/A	Information included on the Grange Resources website
20/10/22	129	Email out	Project update Community drop in sessions	Glenda Stirling	Project Update Drop in Sessions: Dates and times and locations and key information about what will be offered	Project Update	N/A	Commitment to run the drop in sessions
20/10/22	130	Email in	Local Traditional Owner responding to invitation to attend the drop in sessions	Glenda Stirling	Project Update Drop in Sessions invitation: Dates and times and locations and key information about what will be offered	Project update	None Available	Commitment to run the drop in sessions
1/11/2022	131	Email in	Resident of Port Area in Albany, responding to invitation to attend the drop in information session about the project	Bridget Williams- Stephen	Invitation to the Project Update Drop in Sessions : Dates and times and locations and key information about what will be offered	Invitation to the Project Update Drop in Sessions : Dates and times and locations and key information about what will be offered	Unable to attend but would like to receive all the information from the session, and thanks us for the invitation	Arranged to supply the information by hard copy and e-mail and photo's- if available
1/11/2022	132	Email out	Resident of goode Beach and CEO of local environmental organisation. Invited to attend the project update info sessions	Bridget Williams- Stephen	Invitation to the Project Update Drop in Sessions : Dates and times and locations and key information about what will be offered	project update	Unavailable	none available
1/11/2022	133	Email in	Response from archaeologist to invitation to attend the project update drop in sessions	Glenda Stirling	Invitation to the Project Update Drop in Sessions : Dates and times and locations and key information about what will be offered	project update	Paul is unable to attend because he will be away	Thanked Paul for getting back to us
1/11/2022	134	Email out	Resident and lead officer for the Many Peaks Progress Association. Invited to attend the project update info session in Many Peaks next week	Bridget Williams-Stephen	Invitation to the Project Update Drop in Sessions : Dates and times and locations and key information about what will be offered	project update	Unavailable	None Available
1/11/2022	135	Phone call out	Local Elder invited to attend the project update info sessions	Bridget Williams-Stephen	Invitation to the Project Update Drop in Sessions : Dates and times and locations and key information about what will be offered	project Update	Thanks for invitation...will hope to attend at least one session, and will forward the invitation to other interested parties within the Noongar community.	None Available
20/10/22	136	Email out	Labour Member for Albany invited to attend the project update information Sessions	Glenda Stephen	Invitation to the Project Update Drop in Sessions : Dates and times and locations and key information about what will be offered	Project Update	Generic response from her office thanking us for the information	None Available
27/10/2022	137	Email in	Wellstead Progress Association	Glenda Stephen	Invitation to the Project Update Drop in Sessions : Dates and times and locations and key information about what will be offered	Project Update	Krystle is the secretary of the progress association in Wellstead, she contacted us to tell us that she will forward the information and invitation, on to all progress association members.	None Available
20/10/22	138	Email in	Water Corporation Invited to attend the project update info sessions	Glenda Stirling	Invitation to the Project Update Drop in Sessions : Dates and times and locations and key information about what will be offered	Project Update	The information will be circulated	None Available
11/10/2022	139	Email in	Invitation to attend the project info drop in sessions	Geoffrey Han	The preferred option plan for power to the mine site	Power supply to the project	Enquiring about what the plans are for Power supply to the mine	Hope to introduce Mr Zhao to Western Power's senior management at a suitable time
25/10/2022	140	Meeting	JTSI Update	Honglin Zhao, Steven Phan, Grant Bram	Project update presentation provided prior, discussion on key aspects of port, power and approvals	Potential assistance for the project	JTSI will provide written advice on how they can best assist the project within government within 2-3 weeks	Their time and support was welcomed, looking forward to advice
6/11/2022	141	Email out	Mine site layout update	Mike Everitt	Update on mine site layout including new WRD 3	Project Update	None available yet	Further information will be provided as available, feedback requested
6/11/2022	142	Email out	Mine site layout update	Mike Everitt	Update on mine site layout including new WRD 3	Project Update	None available yet	Further information will be provided as available, feedback requested
6/11/2022	143	Email out	Mine site layout update	Mike Everitt	Update on mine site layout including new WRD 3	Project Update	None available yet	Further information will be provided as available, feedback requested
3/11/2022	144	Email in	Response to invitation to attend the project update info sessions	Glenda Stirling	Invitation to the Project Update Drop in Sessions : Dates and times and locations and key information about what will be offered	Project Update	Thanks, and letting us know they will attend. They had already seen the advert .	Committed to continue to provide information and request feedback
3/11/2022	145	Email out	Advert in local press re project update drop in sessions	Glenda Stirling	Advertisement for the Project Update Drop in sessions	Project Update	unavailable	Assess efficacy of advert through feedback

Southdown Magnetite Project - Stakeholder and Community Interactions Register (STAKEHOLDERS DE-IDENTIFIED)

This spreadsheet presents the community and stakeholder engagement and communication activities undertaken during the PFS and pre-referral phase of the Southdown Magnetite Project. It provides an overview of feedback received, Grange's response to the feedback, and the outcomes/resolution following the engagement.

Date	ID	Event type (i.e. Phone call in/meeting/Email out)	Description	Project attendees	Key information provided to stakeholders	Feedback summary (i.e. Borefields, land access, project update)	Stakeholder feedback (comments / concerns)	Stakeholder/Grange response, action, commitments and outcome(s)
11/08/2022	146	Phone call out	Enquiry re project update drop in session	Glenda Stirling	Project update drop in session information	Project update	Enquiring as to whether they need to book in	The nature of a Drop-in described and invited to come at anytime during the 2 hour session without the need to book
8/11/2022	147	Email out	Website update on the project	Mike Everitt	Factsheets on key parts of the project	project update	The community drop in days will offer fact sheet handouts on key parts of the project - project overview, the mining process, Water Supply, Transshipping, Environmental Approvals, Working with the community. Each of these will be posted on the main Grange Website open to the public.	Commitment made to post on the website
5/11/2022	148	Email out	Project Update Community Drop in invitation	Jo Mills	Project Update Community Drop in Session information and invitation	Project Update	Informing a stakeholder of the Port about the upcoming project update community drop in session	Demonstrating collaborative engagement between Grange and Southern Port Authority
5/11/2022	149	Email out	Project Update Community Drop in invitation	Jo Mills	Project Update Community Drop in Session information and invitation	Project Update	Informing a stakeholder of the Port about the upcoming project update community drop in session	Demonstrating collaborative engagement between Grange and Southern Port Authority
5/11/2022	150	Email out	Project Update Community Drop in invitation	Jo Mills	Project Update Community Drop in Session information and invitation	Project update	Informing a stakeholder of the Port about the upcoming project update community drop in session	Demonstrating collaborative engagement between Grange and Southern Port Authority
5/11/2022	151	Email out	Project Update Community Drop in invitation	Jo Mills	Project Update Community Drop in Session information and invitation	Project update	Informing a stakeholder of the Port about the upcoming project update community drop in session	Demonstrating collaborative engagement between Grange and Southern Port Authority
5/11/2022	152	Email out	Project Update Community Drop in invitation	Jo Mills	Project Update Community Drop in Session information and invitation	Project update	Informing a stakeholder of the Port about the upcoming project update community drop in session	Demonstrating collaborative engagement between Grange and Southern Port Authority
5/11/2022	153	Email out	Project Update Community Drop in invitation	Jo Mills	Project Update Community Drop in Session information and invitation	Project update	Informing a stakeholder of the Port about the upcoming project update community drop in session	Demonstrating collaborative engagement between Grange and Southern Port Authority
5/11/2022	154	Email out	Project Update Community Drop in invitation	Jo Mills	Project Update Community Drop in Session information and invitation	Project update	Informing a stakeholder of the Port about the upcoming project update community drop in session	Demonstrating collaborative engagement between Grange and Southern Port Authority
5/11/2022	155	Email out	Project Update Community Drop in invitation	Jo Mills	Project Update Community Drop in Session information and invitation	Project update	Informing a stakeholder of the Port about the upcoming project update community drop in session	Demonstrating collaborative engagement between Grange and Southern Port Authority
5/11/2022	156	Email out	Project Update Community Drop in invitation	Jo Mills	Project Update Community Drop in Session information and invitation	Project update	Informing a stakeholder of the Port about the upcoming project update community drop in session	Demonstrating collaborative engagement between Grange and Southern Port Authority
5/11/2022	157	Email out	Project Update Community Drop in invitation	Jo Mills	Project Update Community Drop in Session information and invitation	Project update	Informing a stakeholder of the Port about the upcoming project update community drop in session	Demonstrating collaborative engagement between Grange and Southern Port Authority
5/11/2022	158	Email out	Project Update Community Drop in invitation	Jo Mills	Project Update Community Drop in Session information and invitation	Project update	Informing a stakeholder of the Port about the upcoming project update community drop in session	Demonstrating collaborative engagement between Grange and Southern Port Authority
5/11/2022	159	Email out	Project Update Community Drop in invitation	Jo Mills	Project Update Community Drop in Session information and invitation	Project update	Informing a stakeholder of the Port about the upcoming project update community drop in session	Demonstrating collaborative engagement between Grange and Southern Port Authority
10/11/2022	160	Phone call in	Employment inquiry	Glenda Stirling	Project status	Project status	Community member inquiring when construction is proposed to commence as interested in employment	Provided project status update. Invited him to Drop-in Day
10/11/2022	161	Phone call out	Remind borefield landowner of Drop in day	Glenda Stirling	Reminded landowner that Drop-in day was occurring	Drop in day reminder	No reply	Message left reminding landowner that Drop-in Day was occurring and that drill core was present for viewing with Hydrogeologist on site to explain
14/11/2022	162	Email out	Posted water and environmental Info sheets. NOT EMAIL	Glenda Stirling	Provided further information sheets to stakeholder	Provision of project information	Mail out - no reply expected	Provision of information to potential borefield landowner
14/11/2022	163	Phone call out	Answered question from drop-in day	Glenda Stirling	Answered question raised regarding length of time borefield proposed to be used (continuously)	Answered question	Stakeholder appreciated the call	Stakeholder not concerned about ongoing use of borefield, just curious if it was short term or long term use (long term)
15/11/2022	164	Meeting	Drop in visit to Wellstead Resource Centre	Glenda Stirling and Bridget Williams-Su	Information Fact Sheets from Project Update Community Drop in session	Project Update	The Resource Centre asked if they could have copies of what was available at the project update community drop-in sessions, to offer to the community.	Fact sheets offered at the drop in sessions dropped off for on-going engagement of the community- people who were unable to attend one of the sessions.
9/11/2022	165	Information sessions	Project Update Community Drop in Session at Wellstead	Mike Everitt, Bob Kinnell, Caroline La F	Detailed information and relevant specialists available to speak on the following parts of the project: Project Overview:From Mine to metal-magnetite mining process ; Environmental Approvals; Transshipping;Water Supply; Slurry and Return Water Pipeline; Community benefits , Heritage considerations, and potential jobs; Mine Closure information sheet	Project Update 1-1 with every person who attended		Refer to summary in Engagement Report
10/11/2022	166	Information sessions	Project Update Community Drop in Session at Manypeaks	Mike Everitt, Bob Kinnell, Caroline La F	Detailed information and relevant specialists available to speak on the following parts of the project: Project Overview:From Mine to metal-magnetite mining process ; Environmental Approvals; Transshipping;Water Supply; Slurry and Return Water Pipeline; Community benefits , Heritage considerations, and potential jobs; Mine Closure information sheet	Project Update 1-1 with every person who attended		Refer to summary in Engagement Report
11/11/2022	167	Information sessions	Project Update Community Drop in Session at Albany	Mike Everitt, Bob Kinnell, Caroline La F	Detailed information and relevant specialists available to speak on the following parts of the project: Project Overview:From Mine to metal-magnetite mining process ; Environmental Approvals; Transshipping;Water Supply; Slurry and Return Water Pipeline; Community benefits , Heritage considerations, and potential jobs; Mine Closure information sheet	Project Update 1-1 with every person who attended		Refer to summary in Engagement Report

Southdown Magnetite Project - Stakeholder and Community Interactions Register (STAKEHOLDERS DE-IDENTIFIED)

This spreadsheet presents the community and stakeholder engagement and communication activities undertaken during the PFS and pre-referral phase of the Southdown Magnetite Project. It provides an overview of feedback received, Grange's response to the feedback, and the outcomes/resolution following the engagement.

Date	ID	Event type (i.e. Phone call in/meeting/Email out)	Description	Project attendees	Key information provided to stakeholders	Feedback summary (i.e. Borefields, land access, project update)	Stakeholder feedback (comments / concerns)	Stakeholder/Grange response, action, commitments and outcome(s)
15/12/2022	168	Meeting	Meeting with sensitive receptors surrounding the mine site to provide an update on the project, discuss dust and noise studies, and provide an opportunity to discuss any questions or concerns.	Michael Everitt, Vivian Warren (Engagement Consultant, Viv Warren Consulting), James Forrest (Air and Noise Specialist, GHD)	Provide an update on the project, outlined the dust and noise modelling results for their properties, explained the dust and noise mitigation that will be implemented to prevent impacts, and explained we will visit them again following the Board meeting in February/March 2023.	Dust and noise impacts on sensitive receptors surrounding mine site	A summary of the key points raised during the resident meetings is outlined below: <ul style="list-style-type: none"> •Two sensitive receptors are generally supportive of the project. •One of the landowners was concerned about the potential impact of their crop spraying on the accommodation camp and asked about the potential impact of the mine site on property values. •A question was raised about the visual impact of the waste rock areas from the highway and landowner properties. •One landowner was concerned about the placement of the powerline for the project (being led by Alinta) and wanted to know where the power poles would be placed on their property. They want to be able to provide input to the poles placement. Landowner was also concerned about the potential impact on their neighbours property and advised they would support their neighbours if they will were to be negatively impacted. One of the landowners was tired of the duration of the project and wanted to be able to make some firm decisions about their property and business. They explained they had been waiting for some years to make decisions about their property and business due to the pending decision about the Grange project. In particular they are concerned about the impact of the project on their business and would like to relocate their home as they do not want to live close to a mine site. They would like Grange to lead in putting an offer together and putting something on the table as soon as possible. 	A list of key actions emerged from the meetings including: <ul style="list-style-type: none"> •Email landowners to thank them for meeting as well as advise we will follow up any questions and actions. •Follow up actions and respond to landowners regarding questions raised – visual impacts, impact on property prices, impact on local workers, alternative to reversing beacons, etc. •Notify landowners when the environmental referral has been submitted to the EPA. •Meet again with sensitive receptors in February / March 2023 to provide a project update. •Hold community catch-up sessions at the Wellstead Community Resource Centre. •Explore the opportunity of using the back waste rock dump first to minimise the visual impact from the Highway and the impacts on neighbouring properties. Conduct further dust modelling in specific locations.