

Figure 28: Viewpoint 7: Northerly view from Dandaragan Road between Gillingara Road and Rows Road, Yathroo - existing view and visualisation ($\approx 75^\circ$ HFoV) - 1 of 3



Existing view ($\approx 75^\circ$ HFoV)

Adjoins Figure 29 (refer next page)



Visualisation ($\approx 75^\circ$ HFoV)

Adjoins Figure 29 (refer next page)

Figure 29: Viewpoint 7: Northerly view from Dandaragan Road between Gillingara Road and Rows Road, Yathroo - existing view and visualisation ($\approx 75^\circ$ HFoV) - 2 of 3

Adjoins Figure 28 (refer previous page)



Adjoins Figure 30 (refer next page)



Adjoins Figure 28 (refer previous page)



Adjoins Figure 31



Figure 30: Viewpoint 7: Northerly view from Dandaragan Road between Gillingara Road and Rows Road, Yathroo - existing view ($\approx 75^\circ$ HFoV) - 3 of 3

Adjoins Figure 29 (refer previous page)



Existing view ($\approx 75^\circ$ HFoV)

Figure 31: Viewpoint 7: Northerly view from Dandaragan Road between Gillingara Road and Rows Road, Yathroo - visualisation ($\approx 75^\circ$ HFoV) - 3 of 3

Adjoins Figure 29 (refer previous page)



Visualisation ($\approx 75^\circ$ HFoV)

Figure 32: Viewpoint 8: Westerly view from Rowses Road near intersection of Scenic Drive, Yathroo - existing view and visualisation

Notes:
Camera: Canon EOS 6D Mark II
Lens: Sigma 24mm f/1.4 DG JSM lens



Key plan

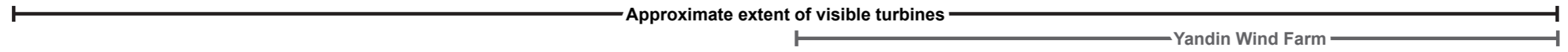
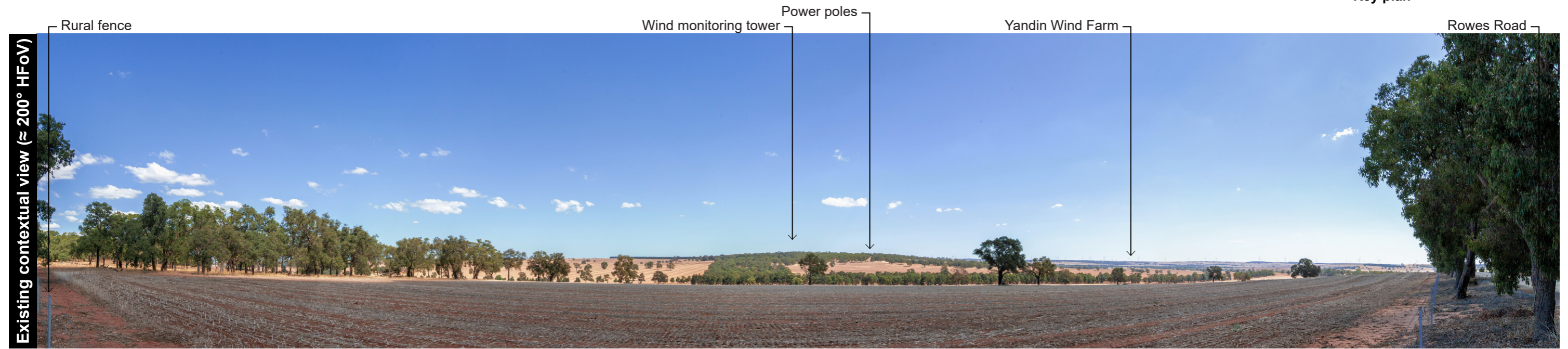


Figure 33: Viewpoint 8: Westerly view from Rowses Road near intersection of Scenic Drive, Yathroo- existing view and visualisation ($\approx 75^\circ$ HFoV) - 1 of 2



Adjoins Figure 34 (refer next page)



Adjoins Figure 34 (refer next page)

Figure 34: Viewpoint 8: Westerly view from Rowses Road near intersection of Scenic Drive, Yathroo - existing view and visualisation ($\approx 75^\circ$ HFoV) - 2 of 2

Adjoins Figure 33 (refer previous page)



Existing view ($\approx 75^\circ$ HFoV)

Adjoins Figure 33 (refer previous page)



Visualisation ($\approx 75^\circ$ HFoV)

Figure 35: Viewpoint 9A: Southerly view from Dandaragan Community Recreation Centre, Dandaragan - existing view and visualisation

Notes:

Camera: Canon EOS 6D Mark II
 Lens: Sigma 50mm f/1.4 DG JSM lens

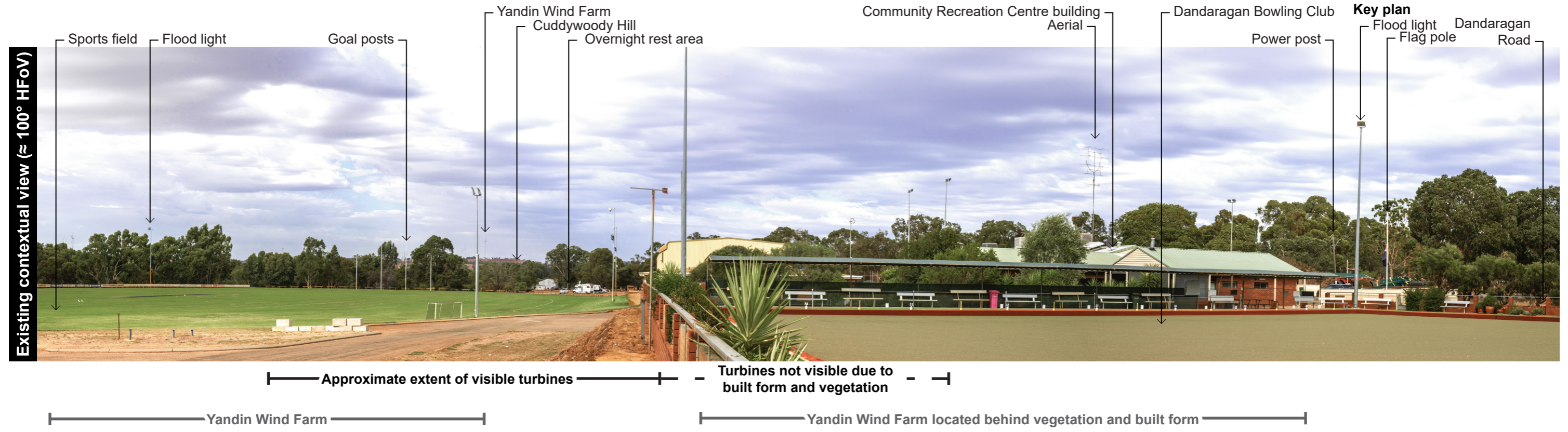
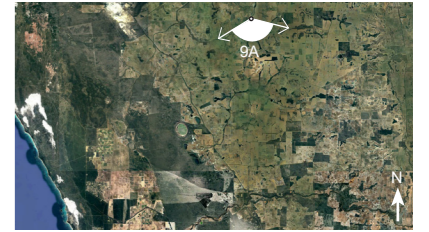


Figure 36:Viewpoint 9A: Southerly view from Dandaragan Community Recreation Centre, Dandaragan - existing view and visualisation ($\approx 75^\circ$ HFoV) - 1 of 1

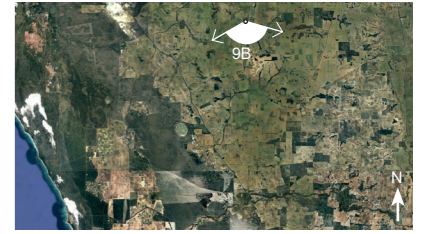


Figure 37: Viewpoint 9B: Southerly view from end of Camm Road, Dandaragan - existing view

Notes:

Camera: Canon EOS 6D Mark II

Lens: Sigma 50mm f/1.4 DG JSM lens



Key plan

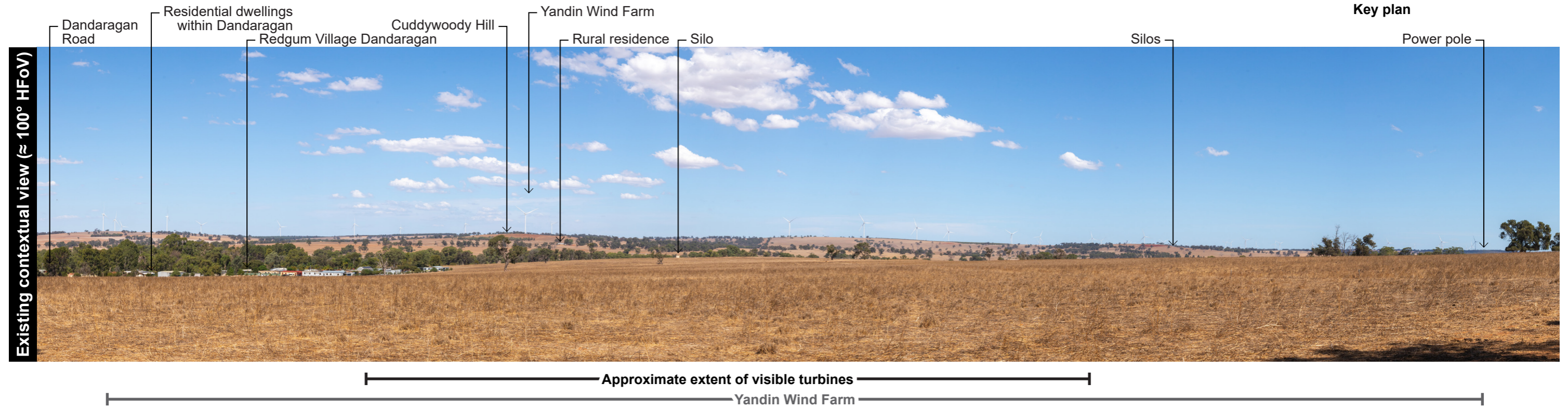
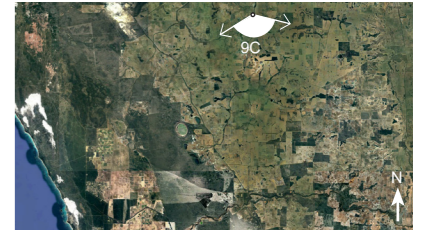


Figure 38: Viewpoint 9C: Southerly view from Dandaragan Road, Dandaragan - existing view

Notes:

Camera: Canon EOS 6D Mark II

Lens: Sigma 24mm f/1.4 DG JSM lens



Key plan

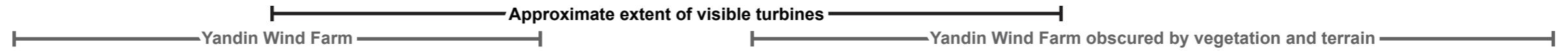
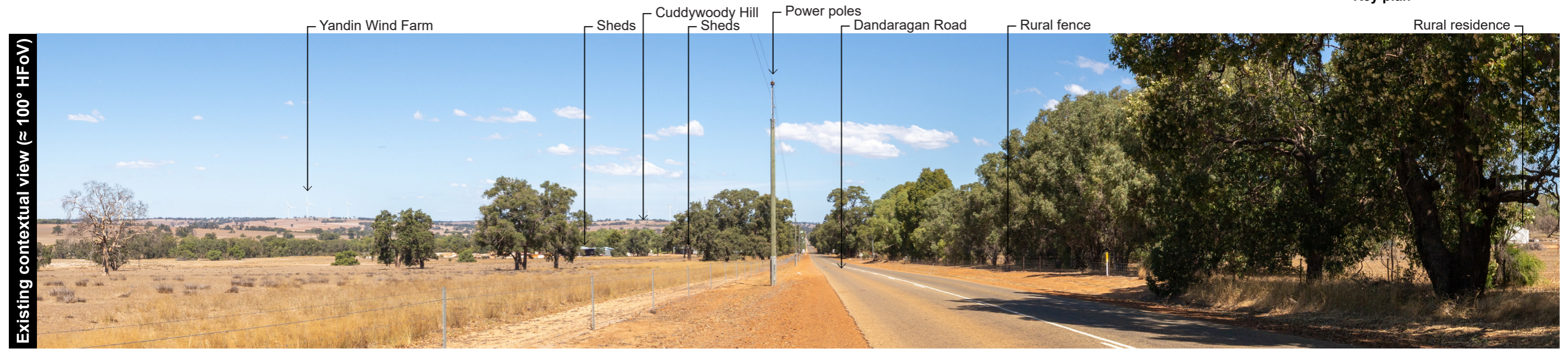


Figure 39: Viewpoint 10: Southwesterly view from Rowes Road, Dandaragan - existing view

Notes:

Camera: Canon EOS 6D Mark II

Lens: Sigma 50mm f/1.4 DG JSM lens



Key plan



Rowes Road

Rural fence

Yandin Wind Farm

Approximate extent of visible turbines

Yandin Wind Farm



Existing view (≈ 75° HFoV)

Figure 40: Viewpoint 11: Northwesterly view from Boundary Road, Yathroo - existing view

Notes:

Camera: Canon EOS 6D Mark II

Lens: Sigma 50mm f/1.4 DG JSM lens



Key plan



Figure 41: Viewpoint 12: Northwesterly view from Mogumber Road West, Red Gully - existing view

Notes:

Camera: Canon EOS 6D Mark II

Lens: Sigma 50mm f/1.4 DG JSM lens



Key plan

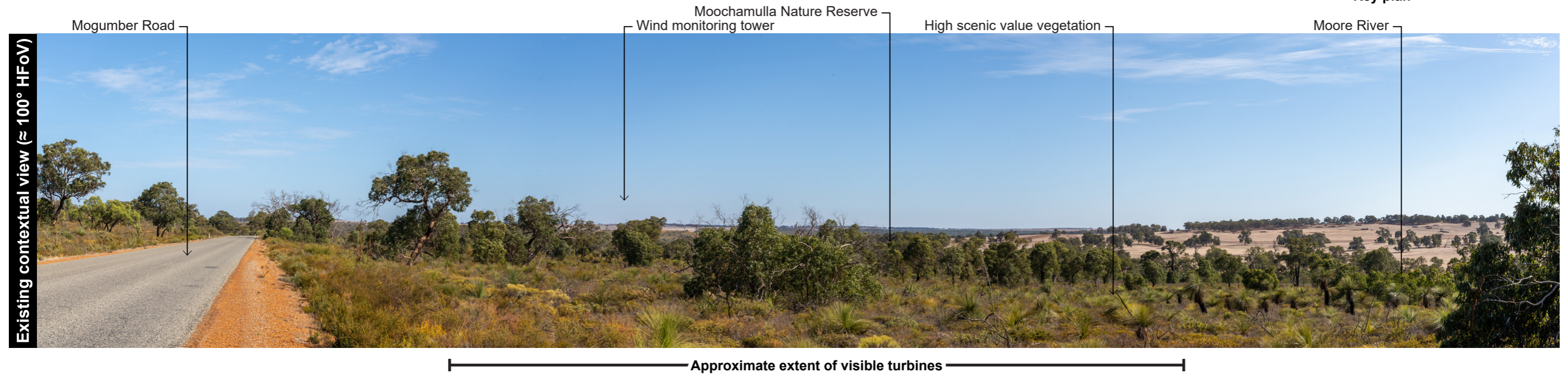


Figure 42: Viewpoint 13: Northeasterly view from Orange Springs Road, Moore River National Park - existing view

Notes:

Camera: Canon EOS 6D Mark II

Lens: Sigma 50mm f/1.4 DG JSM lens



Key plan



Approximate extent of turbines (behind vegetation)

Yandin Wind Farm behind vegetation



Figure 43: Viewpoint 14A: Easterly view from Indian Ocean Drive roadside rest area, Nilgen - existing view

Notes:

Camera: Canon EOS 6D Mark II

Lens: Sigma 50mm f/1.4 DG JSM lens



Key plan

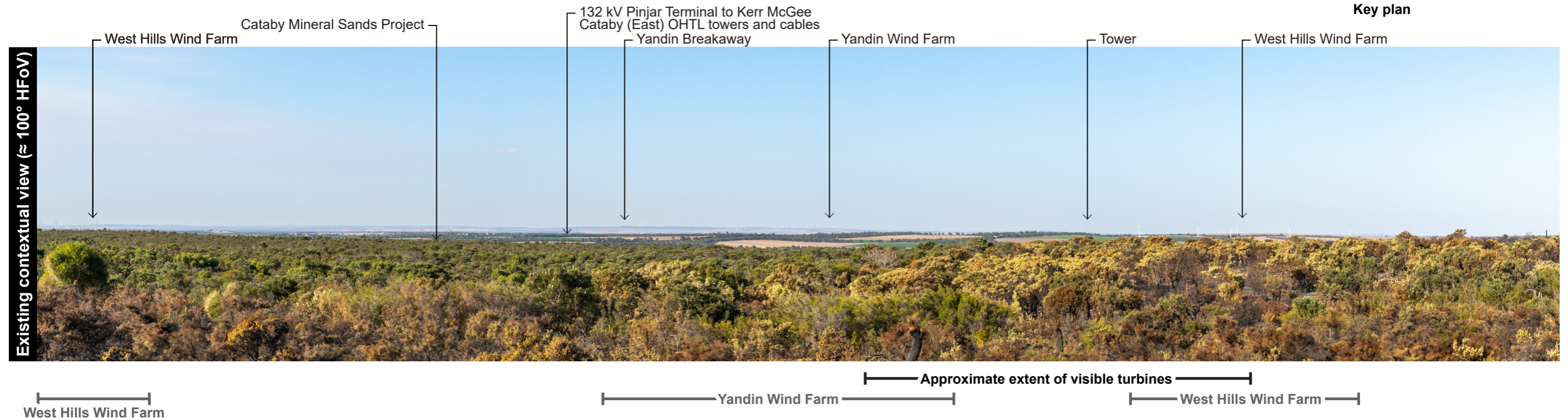


Figure 44: Viewpoint 14B: Easterly view from Nilgen Wildflower Walk, Nilgen - existing view

Notes:

Camera: Canon EOS 6D Mark II

Lens: Sigma 50mm f/1.4 DG JSM lens



Key plan



West Hills Wind Farm

Yandin Wind Farm

Approximate extent of visible turbines

West Hills Wind Farm

