

## Map Index



STRATEGEN  
info@strategen.com.au  
www.strategen.com.au

**Scale**  
0 10 20  
Kilometres

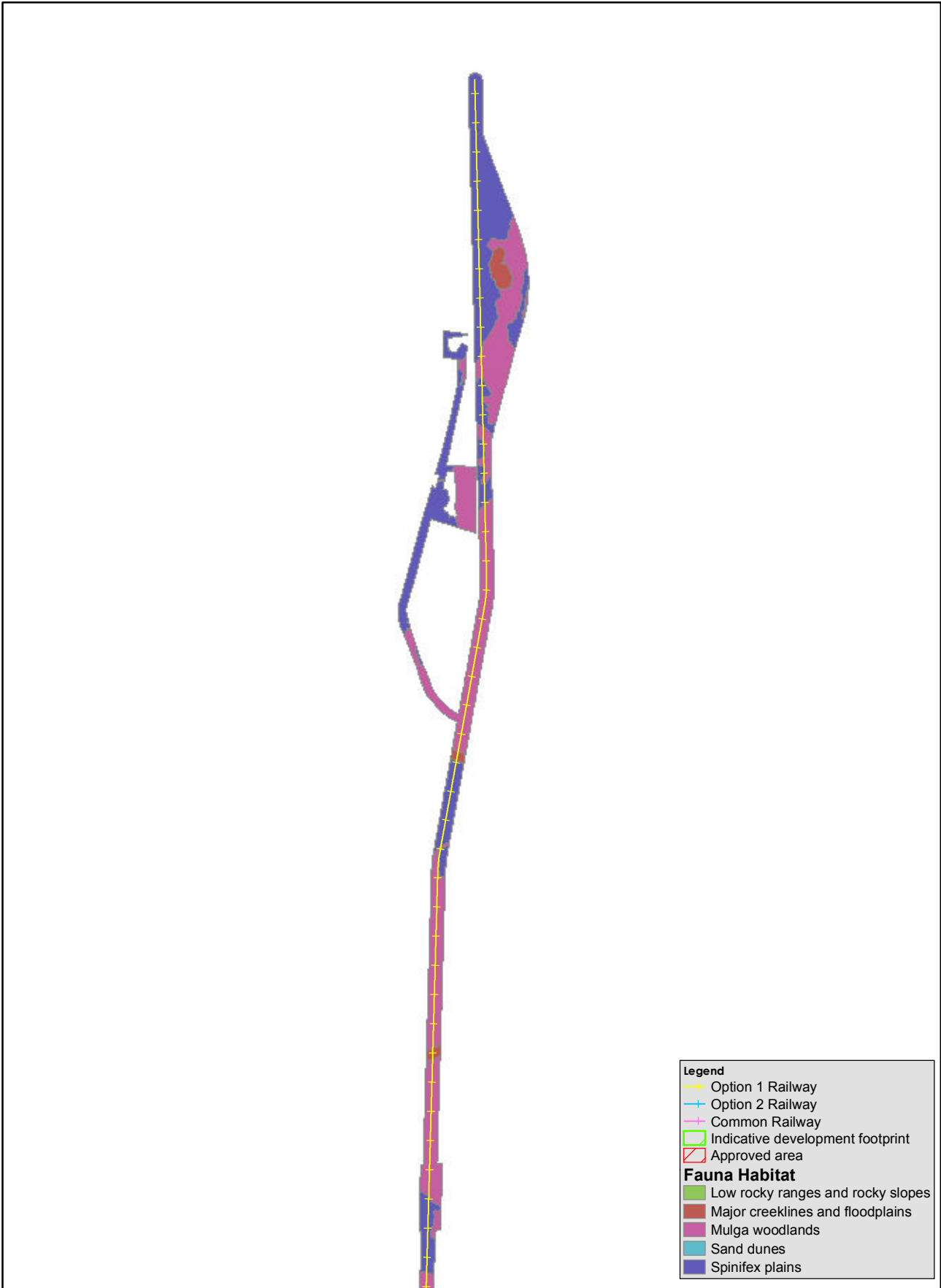


1:1,000,000  
at A4

Coordinate System: GDA 1994 MGA Zone 50  
Date: 8/08/2011  
Author: atomeo  
Path: Q:\Consult\2011\FER\FER11068.01\Projects\Environ\_Approv\_Mine\_Rail\Appendix\_22\_Mapbook\_Index.mxd

Source: Data recieved from Client.  
Fauna Habitat data recieved from Phoenix.  
Note that positional errors may occur in some areas

**Legend**  
 Option 1 Railway  
 Option 2 Railway  
 Common Railway  
 Indicative development footprint  
 Approved area  
 Mapsheet Index



**Legend**

- Option 1 Railway
- Option 2 Railway
- Common Railway
- Indicative development footprint
- Approved area

**Fauna Habitat**

- Low rocky ranges and rocky slopes
- Major creeklines and floodplains
- Mulga woodlands
- Sand dunes
- Spinifex plains

Map 1: fauna habitat mapping

STRATEGEN  
info@strategen.com.au  
www.strategen.com.au

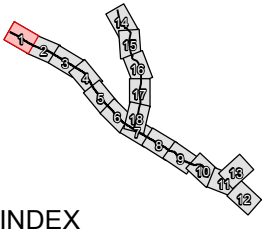
**Scale**

0 2 4  
Kilometres

1:80,000  
at A4

Coordinate System: GDA 1994 MGA Zone 50  
Date: 8/08/2011  
Author: atomeo  
Path: Q:\Consult\2011\FER\FER11068.01\Projects\Environ\_Approv\_Mine\_Rail\Appendix\_22\_Mapbook.mxd

Source: Data recieved from Client.  
Fauna Habitat data recieved from Phoenix.  
Note that positional errors may occur in some areas



INDEX

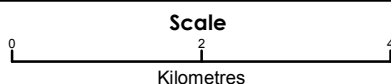


- Legend**
- Option 1 Railway
  - Option 2 Railway
  - Common Railway
  - Indicative development footprint
  - Approved area
- Fauna Habitat**
- Low rocky ranges and rocky slopes
  - Major creeklines and floodplains
  - Mulga woodlands
  - Sand dunes
  - Spinifex plains

Map 2: fauna habitat mapping



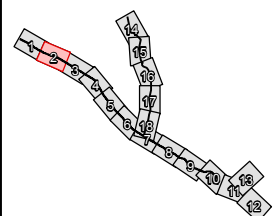
STRATEGEN  
info@strategen.com.au  
www.strategen.com.au



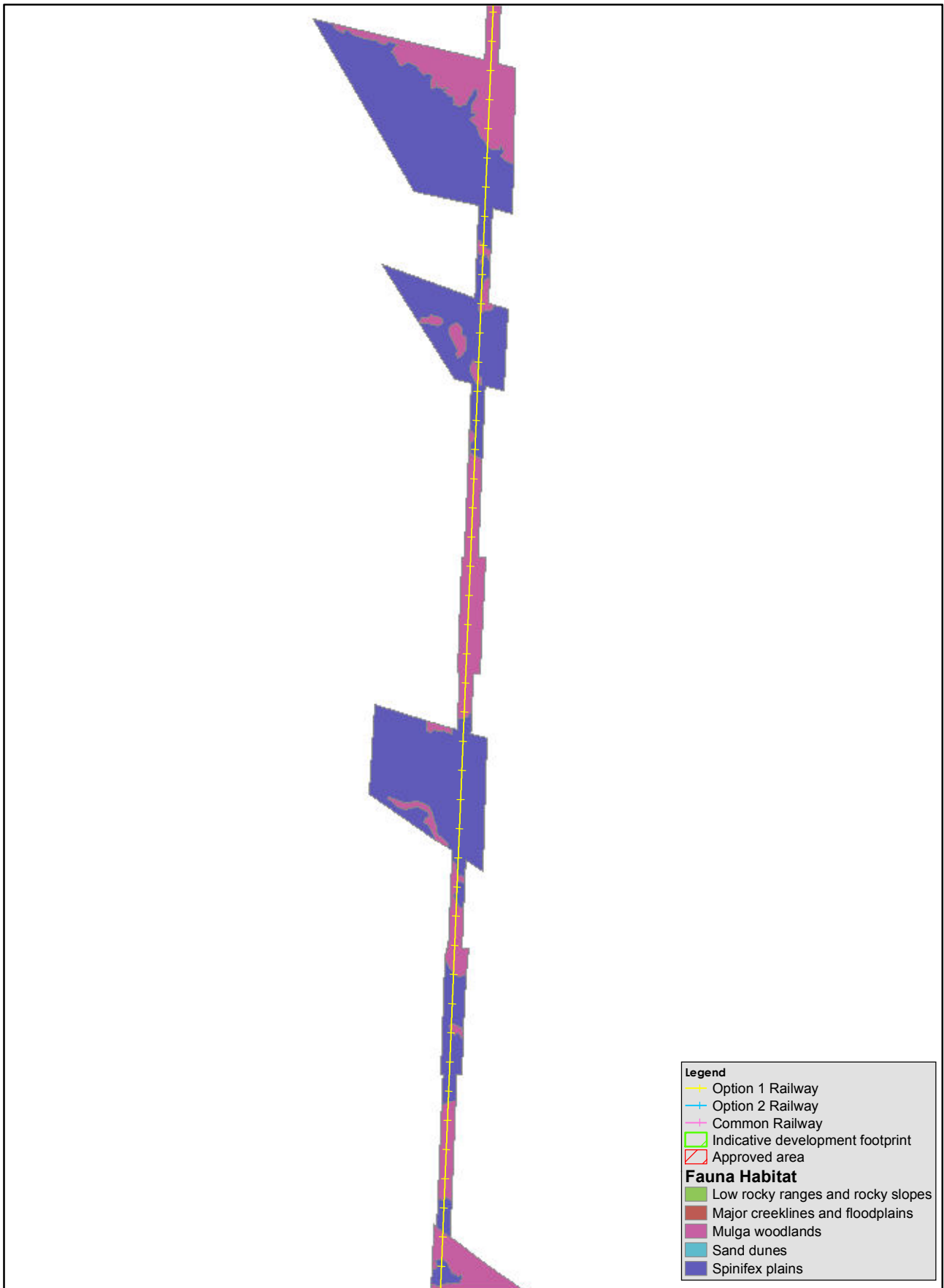
1:80,000  
at A4

Coordinate System: GDA 1994 MGA Zone 50  
Date: 8/08/2011  
Author: atomeo  
Path: Q:\Consult\2011\FER\FER11068.01\Projects\Environ\_Approv\_Mine\_Rail\Appendix\_22\_Mapbook.mxd

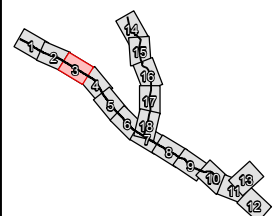
Source: Data recieved from Client.  
Fauna Habitat data recieved from Phoenix.  
Note that positional errors may occur in some areas

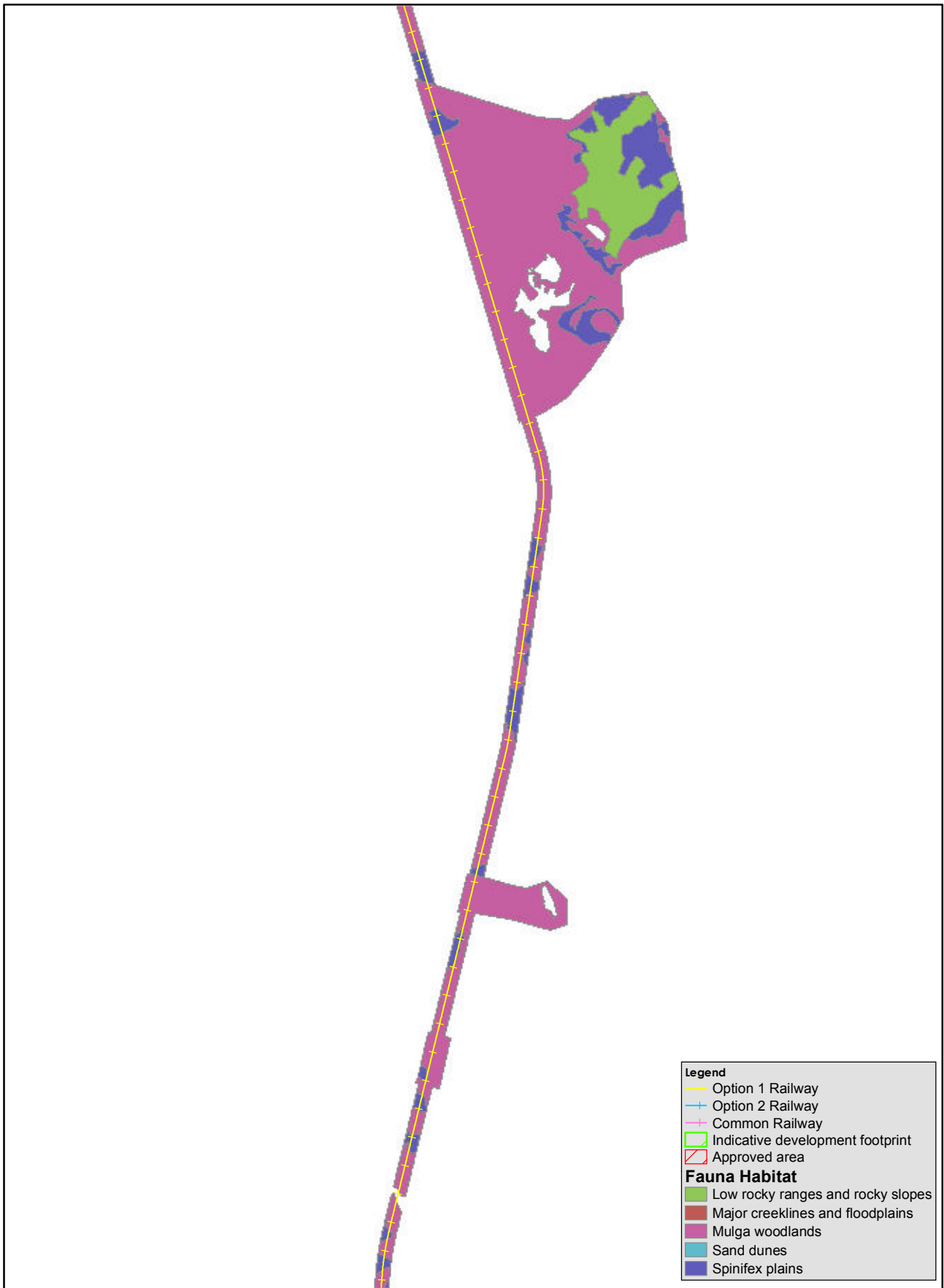


INDEX



Map 3: fauna habitat mapping



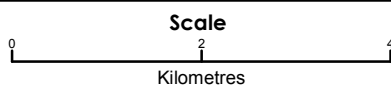


- Legend**
- Option 1 Railway
  - Option 2 Railway
  - Common Railway
  - Indicative development footprint
  - Approved area
- Fauna Habitat**
- Low rocky ranges and rocky slopes
  - Major creeklines and floodplains
  - Mulga woodlands
  - Sand dunes
  - Spinifex plains

Map 4: fauna habitat mapping



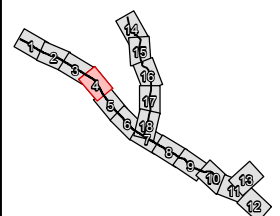
STRATEGEN  
info@strategen.com.au  
www.strategen.com.au



1:80,000  
at A4

Coordinate System: GDA 1994 MGA Zone 50  
Date: 8/08/2011  
Author: atomeo  
Path: Q:\Consult\2011\FER\FER11068.01\Projects\Environ\_Approv\_Mine\_Rail\Appendix\_22\_Mapbook.mxd

Source: Data recieved from Client.  
Fauna Habitat data recieved from Phoenix.  
Note that positional errors may occur in some areas



INDEX

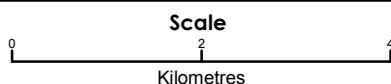


- Legend**
- Option 1 Railway
  - Option 2 Railway
  - Common Railway
  - Indicative development footprint
  - Approved area
- Fauna Habitat**
- Low rocky ranges and rocky slopes
  - Major creeklines and floodplains
  - Mulga woodlands
  - Sand dunes
  - Spinifex plains

Map 5: fauna habitat mapping



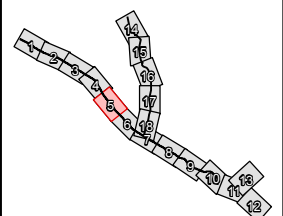
STRATEGEN  
info@strategen.com.au  
www.strategen.com.au



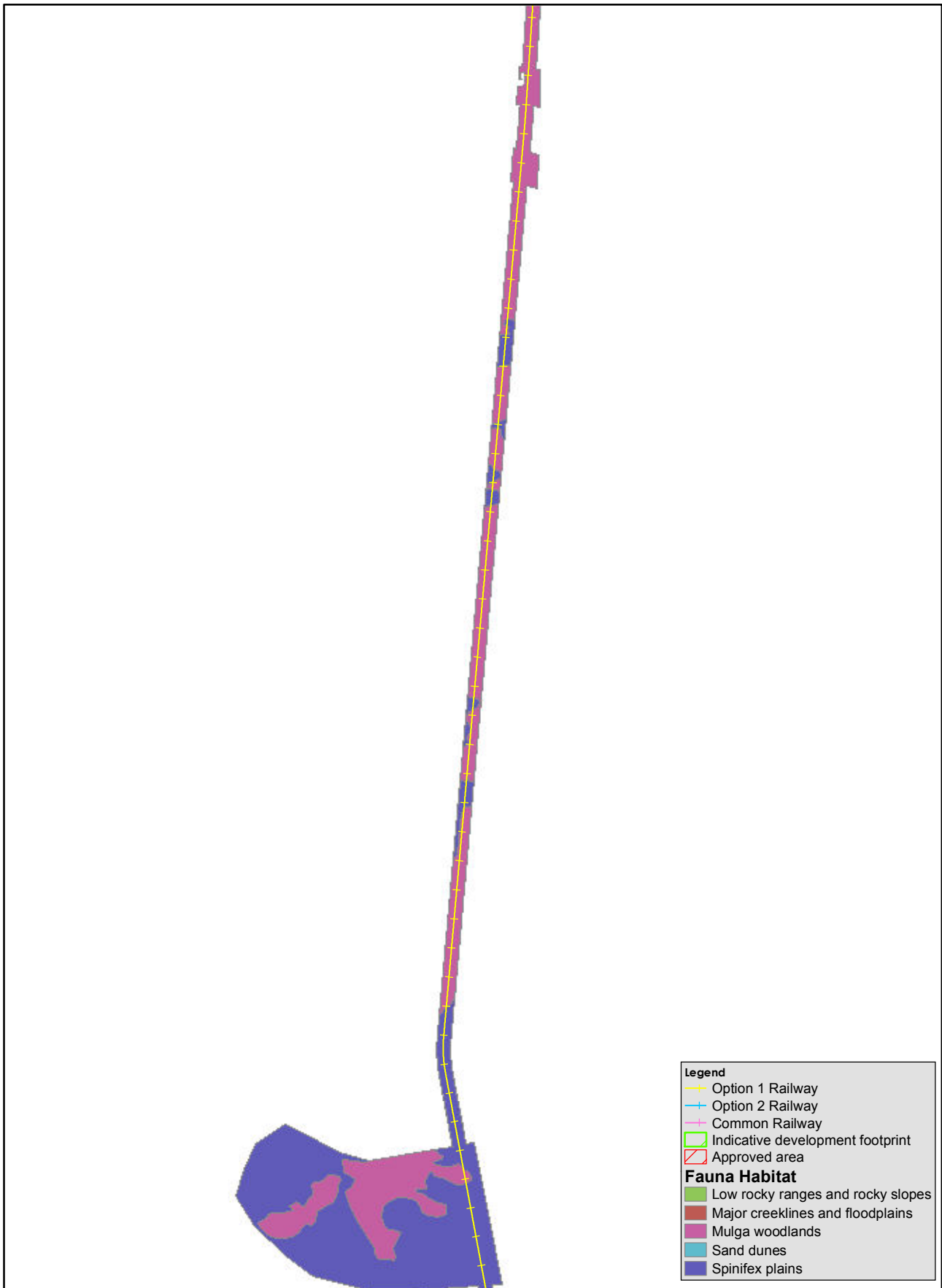
1:80,000  
at A4

Coordinate System: GDA 1994 MGA Zone 50  
Date: 8/08/2011  
Author: atomeo  
Path: Q:\Consult\2011\FER\FER11068.01\Projects\Environ\_Approv\_Mine\_Rail\Appendix\_22\_Mapbook.mxd

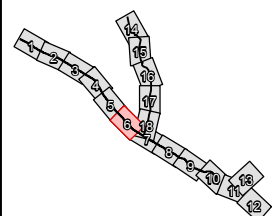
Source: Data recieved from Client.  
Fauna Habitat data recieved from Phoenix.  
Note that positional errors may occur in some areas

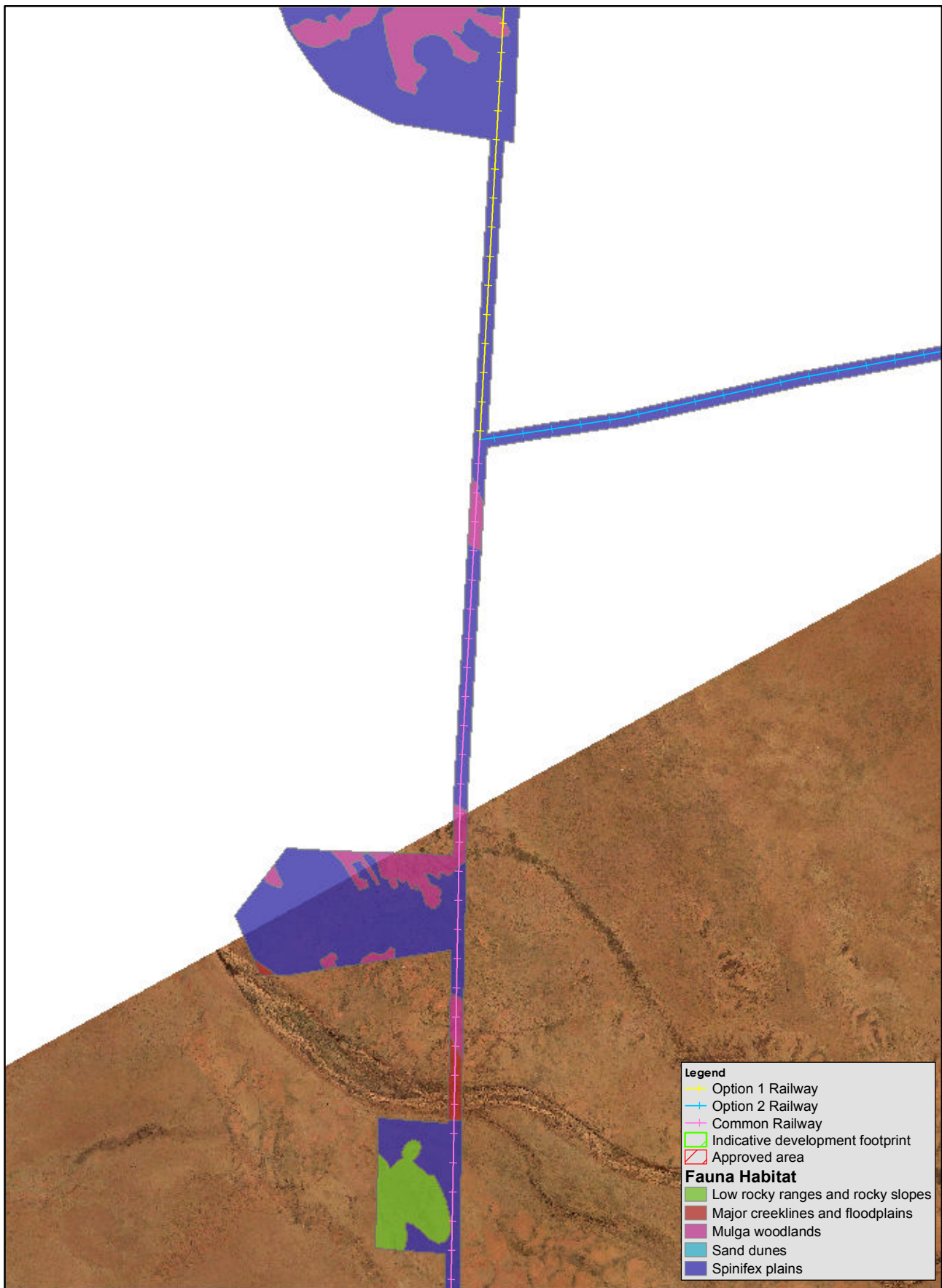


INDEX

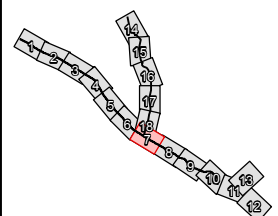


Map 6: fauna habitat mapping

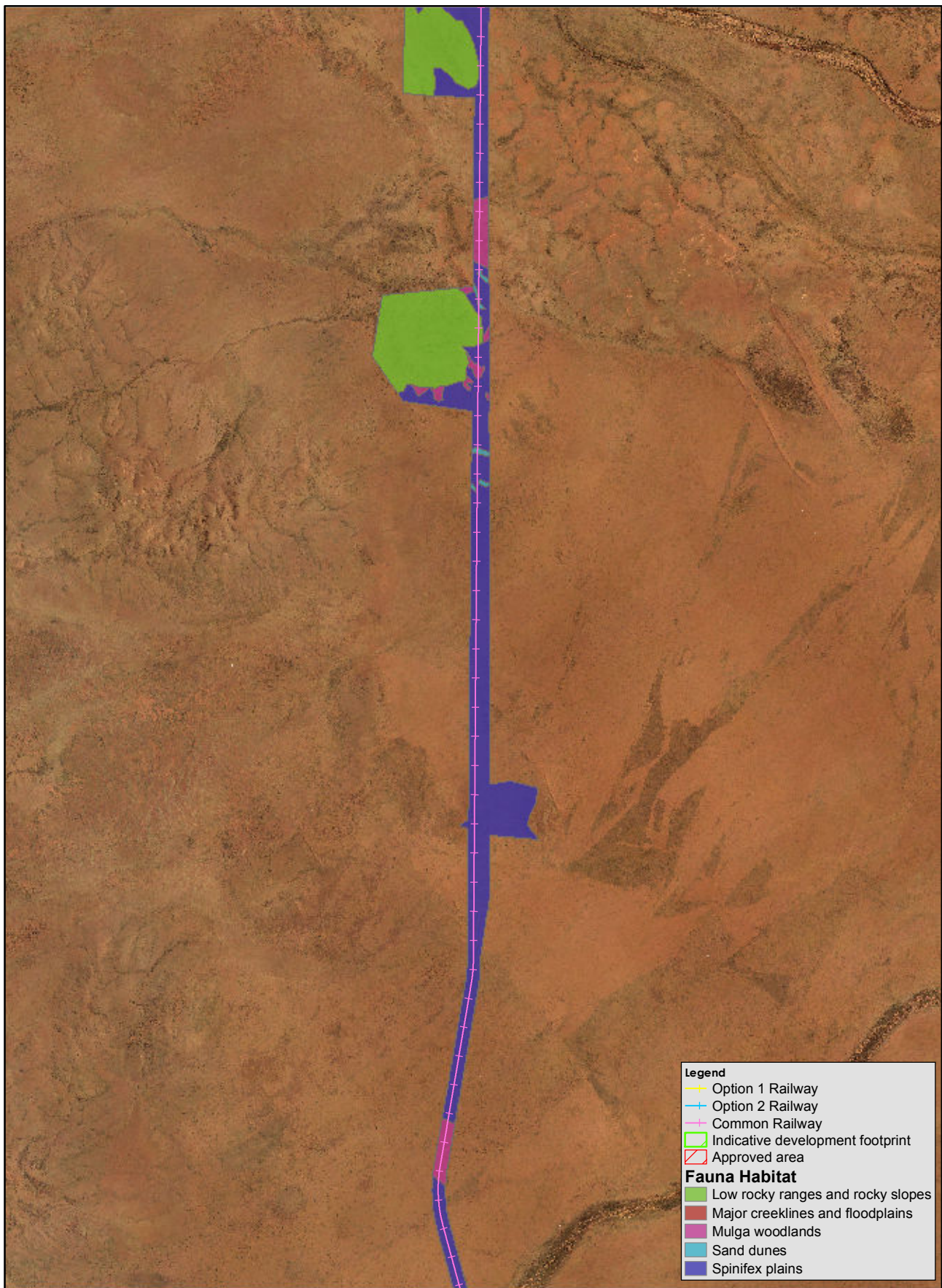




Map 7: fauna habitat mapping





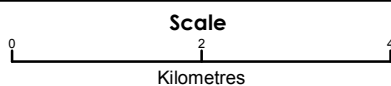


- Legend**
- +— Option 1 Railway
  - +— Option 2 Railway
  - +— Common Railway
  - Indicative development footprint
  - Approved area
- Fauna Habitat**
- Low rocky ranges and rocky slopes
  - Major creeklines and floodplains
  - Mulga woodlands
  - Sand dunes
  - Spinifex plains

Map 8: fauna habitat mapping



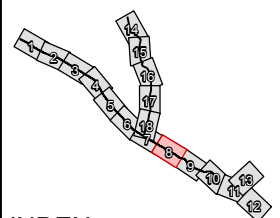
STRATEGEN  
info@strategen.com.au  
www.strategen.com.au



1:80,000  
at A4

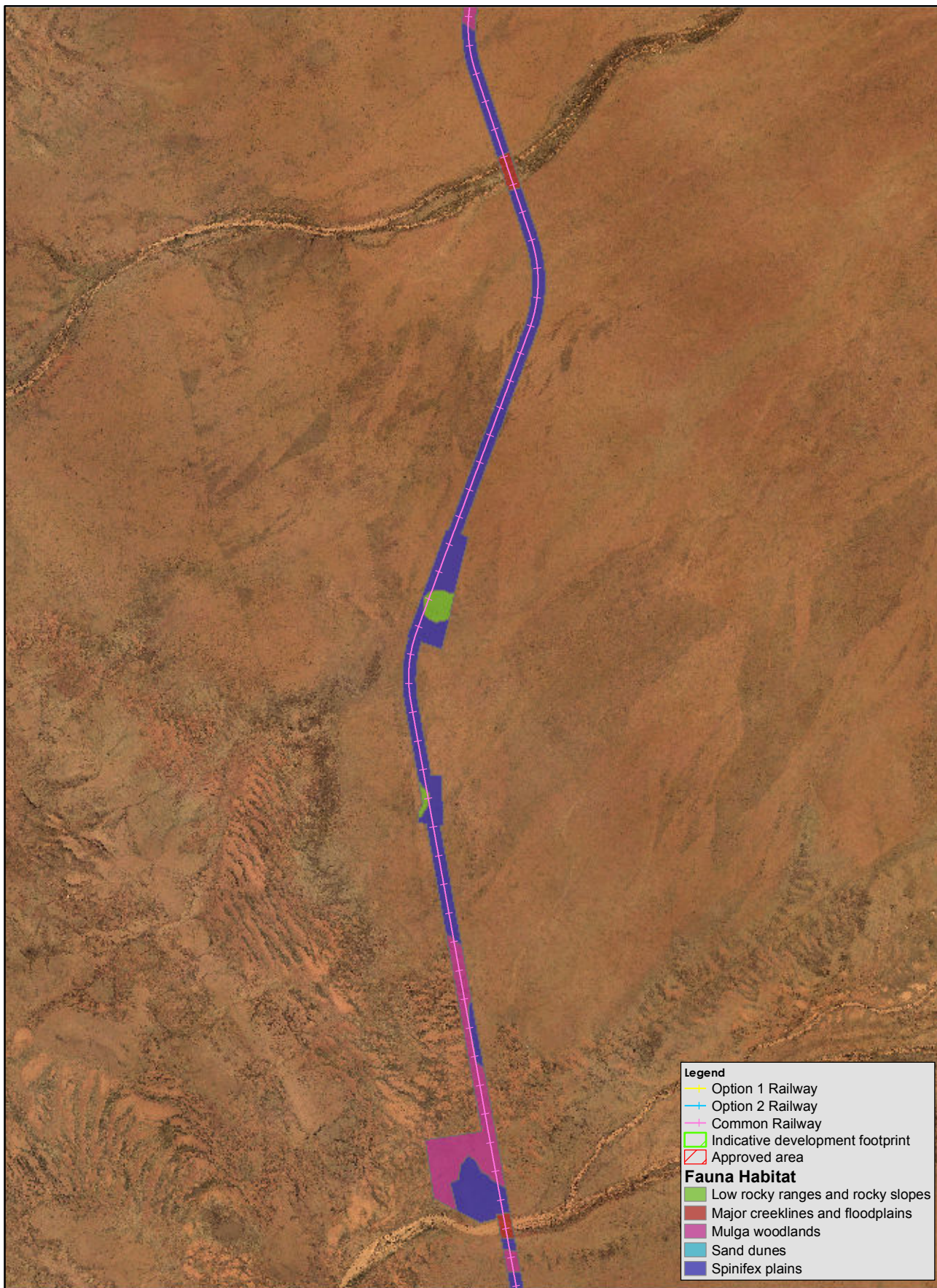
Coordinate System: GDA 1994 MGA Zone 50  
Date: 8/08/2011  
Author: atomeo  
Path: Q:\Consult\2011\FER\FER11068.01\Projects\Environ\_Approv\_Mine\_Rail\Appendix\_22\_Mapbook.mxd

Source: Data recieved from Client.  
Fauna Habitat data recieved from Phoenix.  
Note that positional errors may occur in some areas

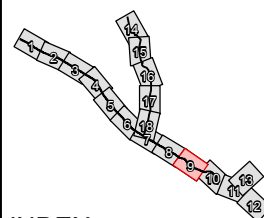


INDEX

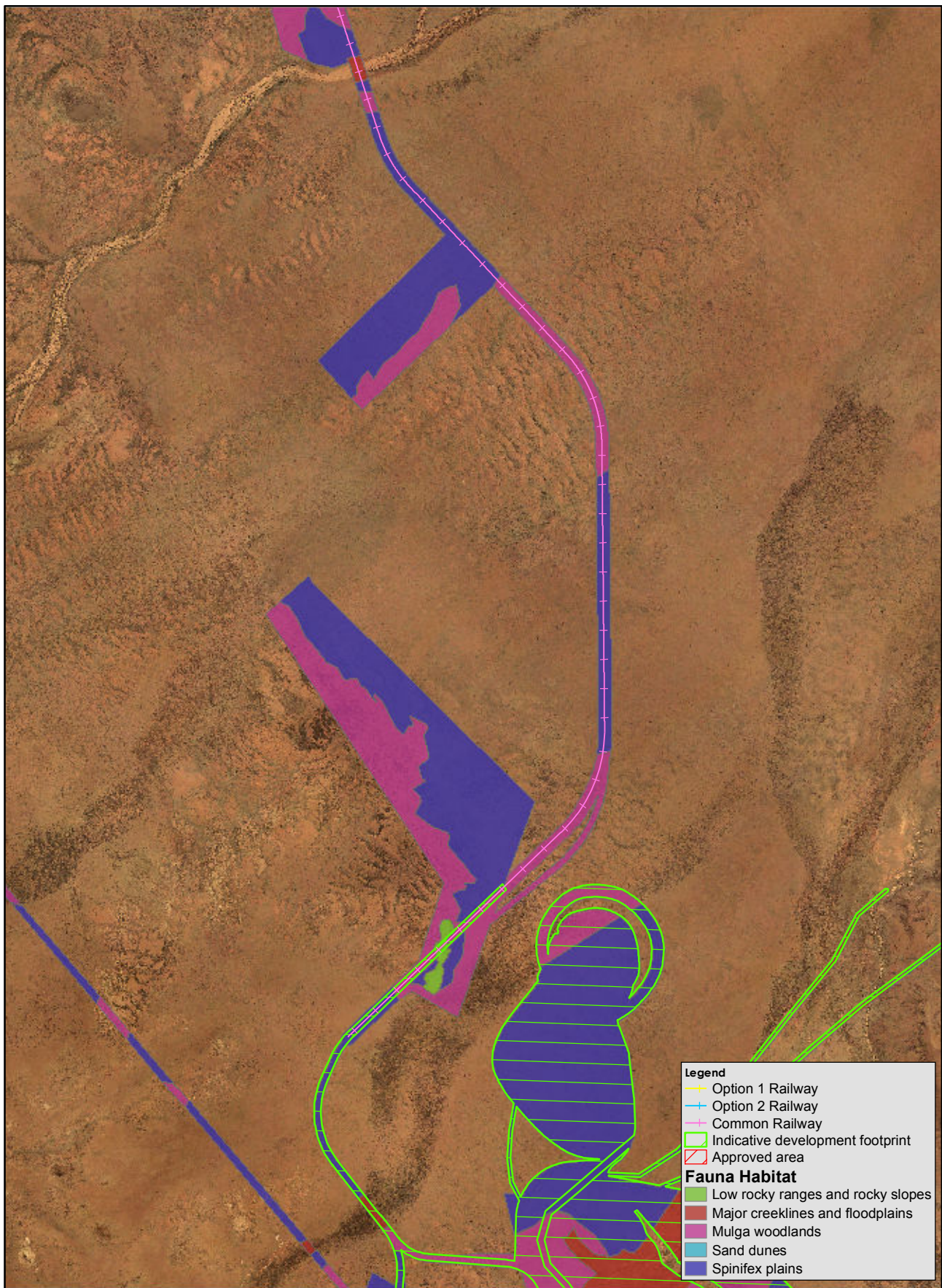




Map 9: fauna habitat mapping

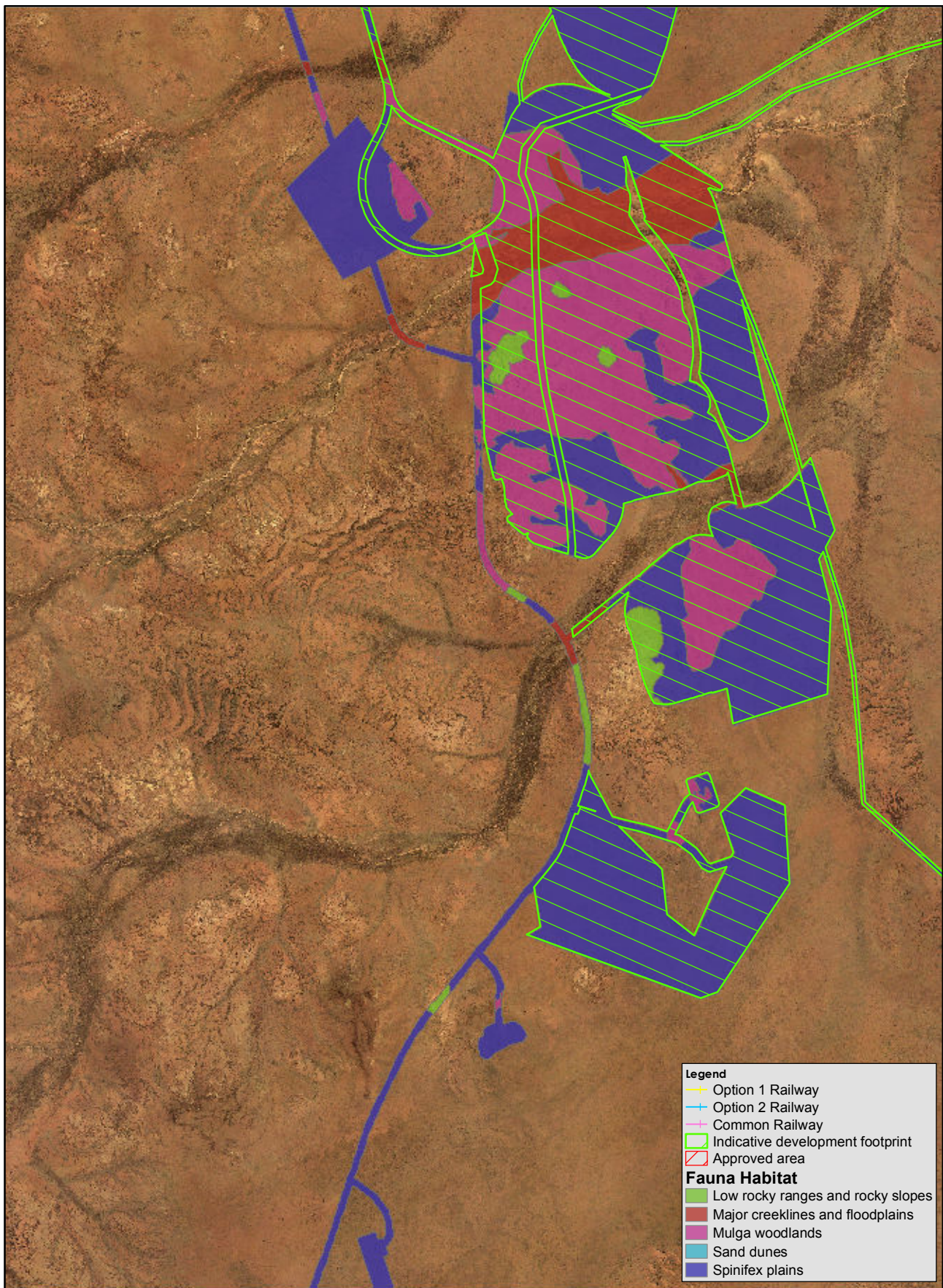






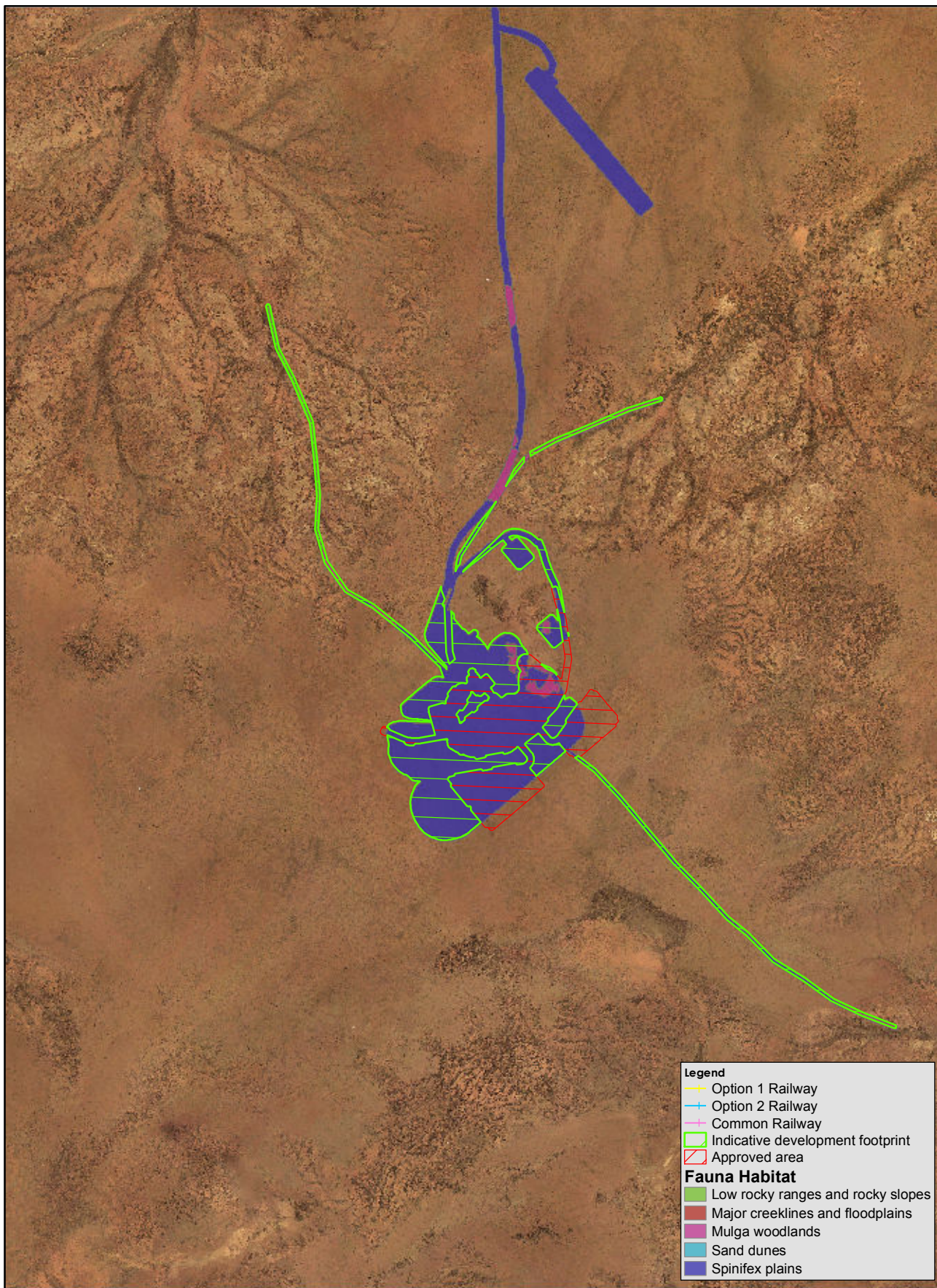
Map 10: fauna habitat mapping





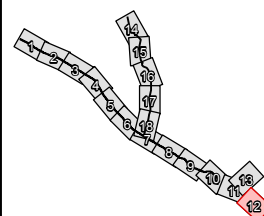
Map 11: fauna habitat mapping



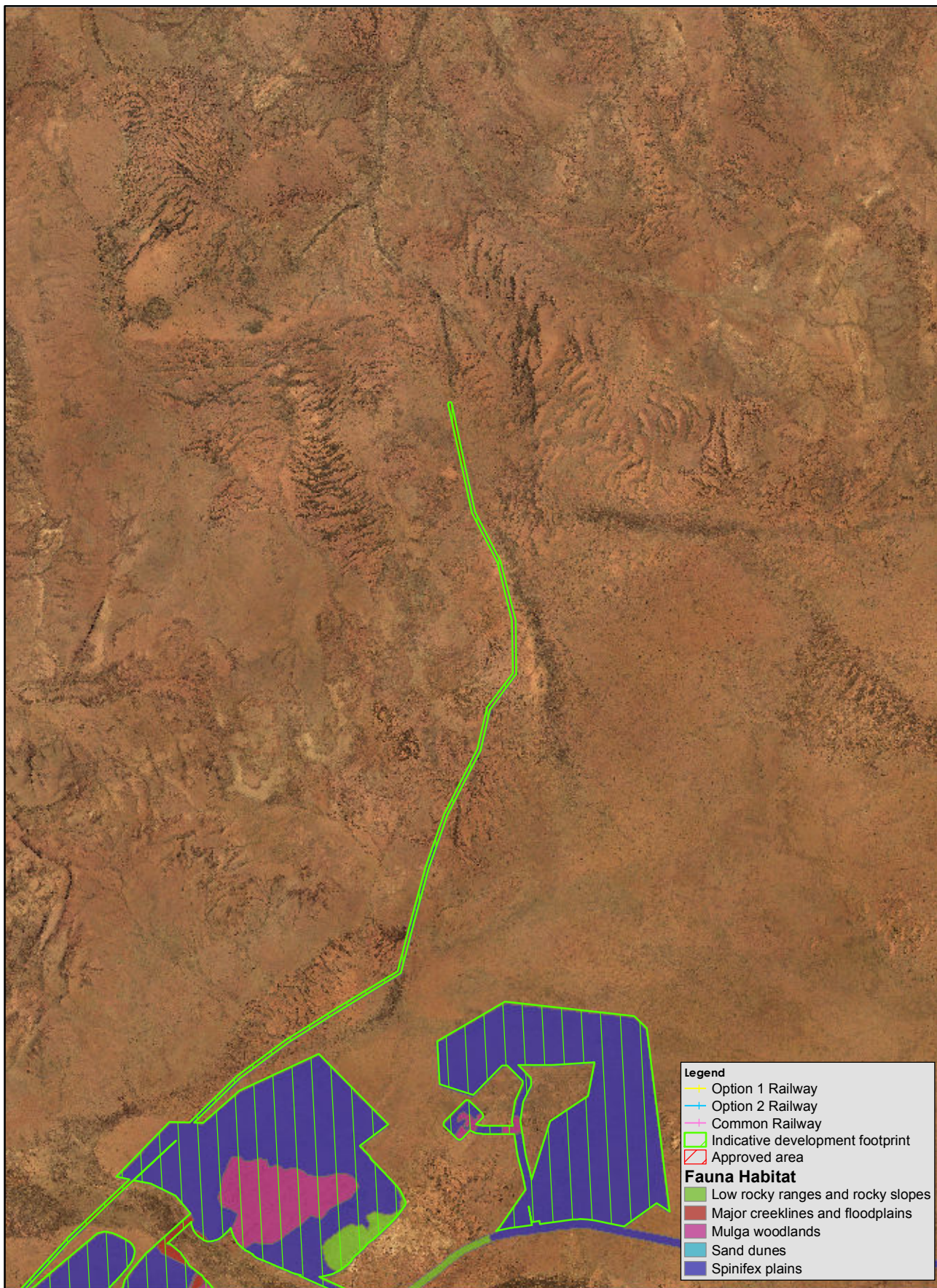


- Legend**
- Option 1 Railway
  - Option 2 Railway
  - Common Railway
  - Indicative development footprint
  - Approved area
- Fauna Habitat**
- Low rocky ranges and rocky slopes
  - Major creeklines and floodplains
  - Mulga woodlands
  - Sand dunes
  - Spinifex plains

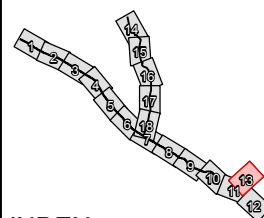
Map 12: fauna habitat mapping







Map 13: fauna habitat mapping



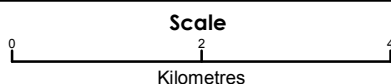


- Legend**
- Option 1 Railway
  - Option 2 Railway
  - Common Railway
  - Indicative development footprint
  - Approved area
- Fauna Habitat**
- Low rocky ranges and rocky slopes
  - Major creeklines and floodplains
  - Mulga woodlands
  - Sand dunes
  - Spinifex plains

Map 14: fauna habitat mapping



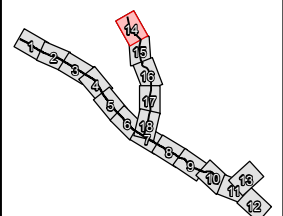
STRATEGEN  
info@strategen.com.au  
www.strategen.com.au



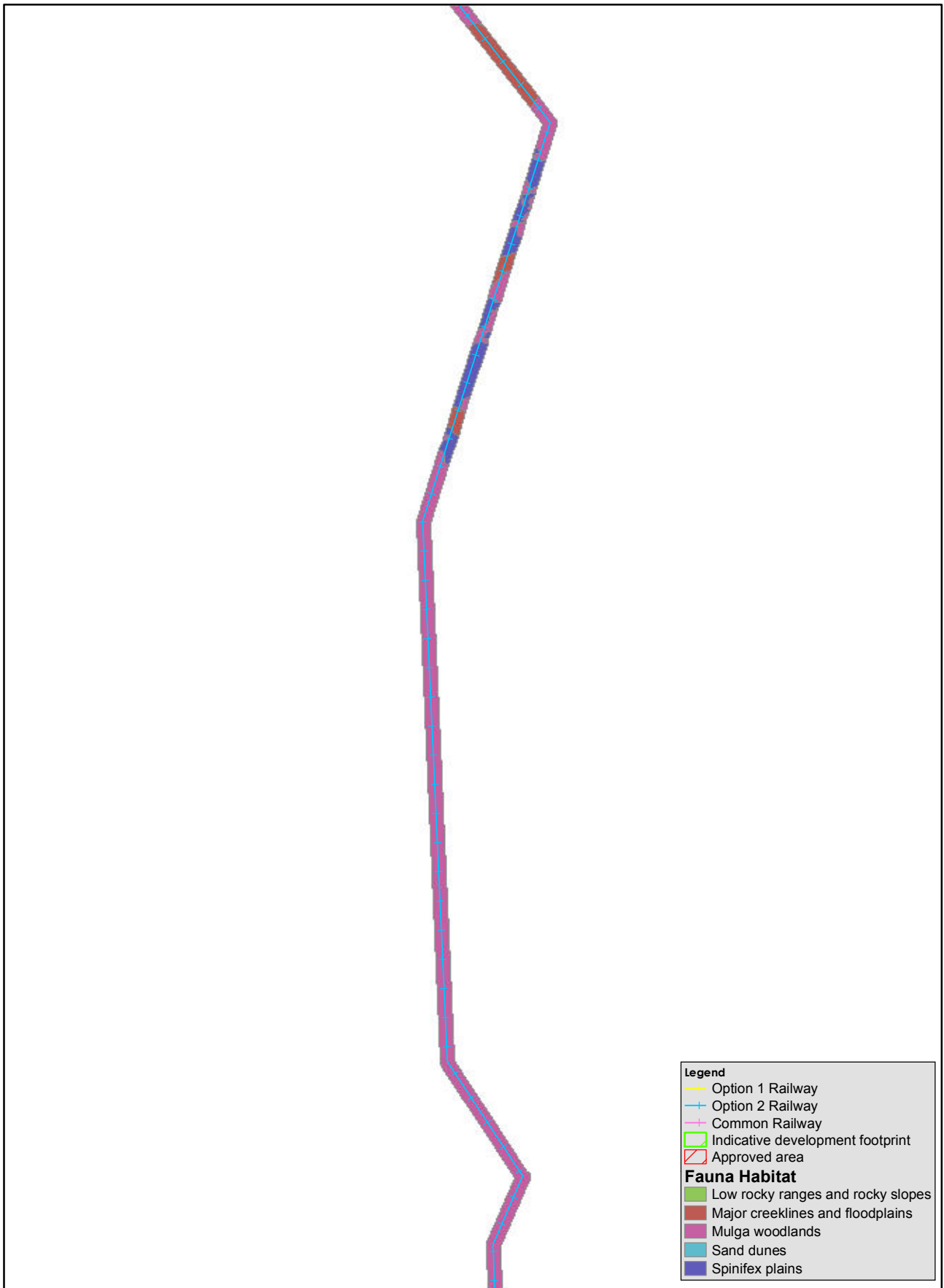
1:80,000  
at A4

Coordinate System: GDA 1994 MGA Zone 50  
Date: 8/08/2011  
Author: atomeo  
Path: Q:\Consult\2011\FER\FER11068.01\Projects\Environ\_Approv\_Mine\_Rail\Appendix\_22\_Mapbook.mxd

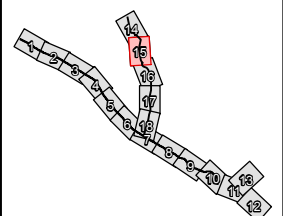
Source: Data recieved from Client.  
Fauna Habitat data recieved from Phoenix.  
Note that positional errors may occur in some areas



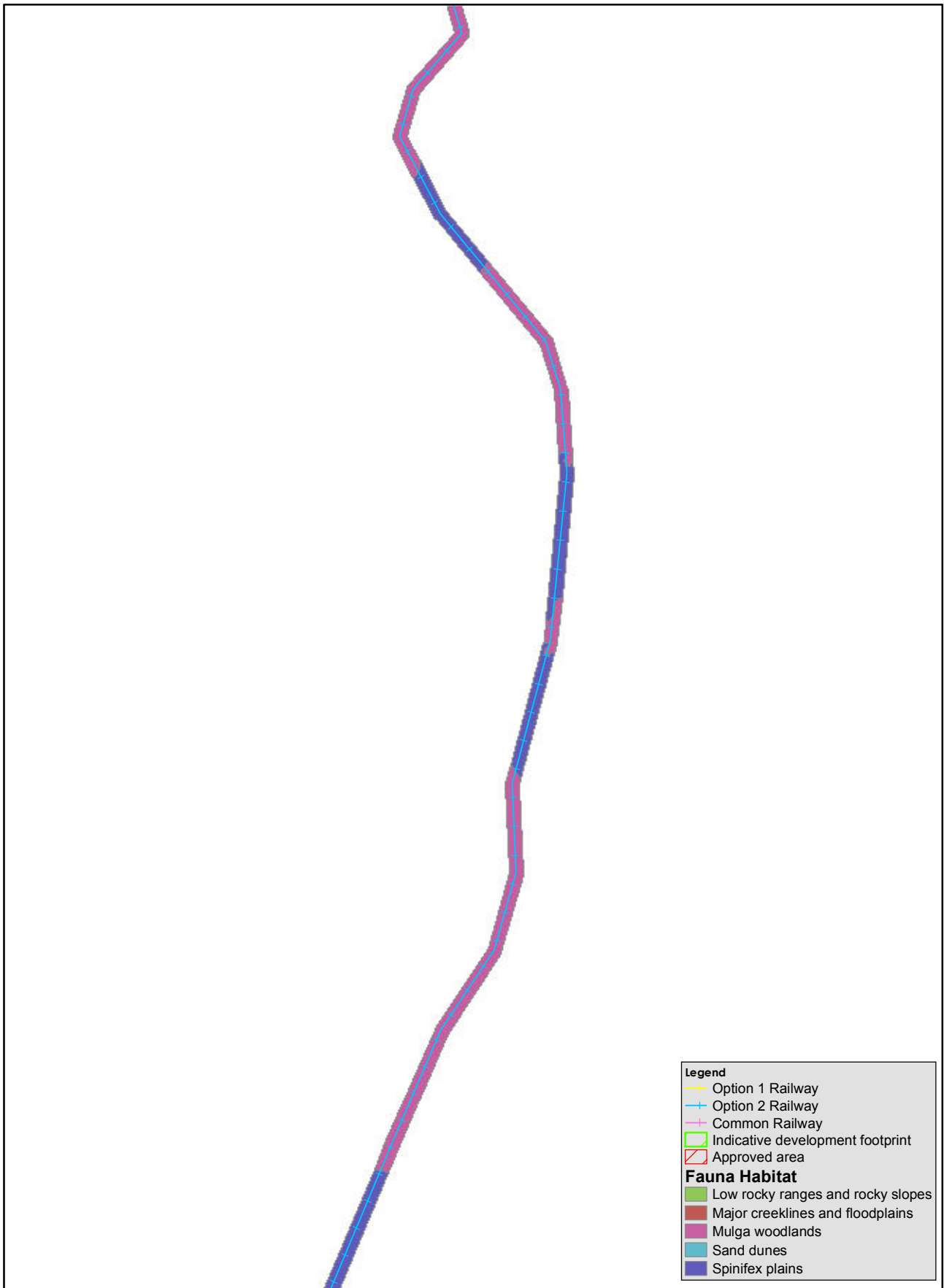
INDEX



Map 15: fauna habitat mapping

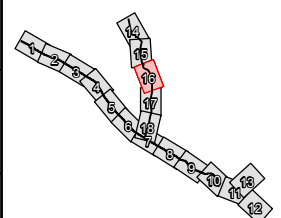






- Legend**
- Option 1 Railway
  - Option 2 Railway
  - Common Railway
  - Indicative development footprint
  - Approved area
- Fauna Habitat**
- Low rocky ranges and rocky slopes
  - Major creeklines and floodplains
  - Mulga woodlands
  - Sand dunes
  - Spinifex plains

Map 16: fauna habitat mapping

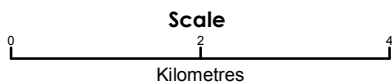




Map 17: fauna habitat mapping



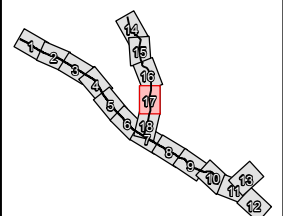
STRATEGEN  
info@strategen.com.au  
www.strategen.com.au



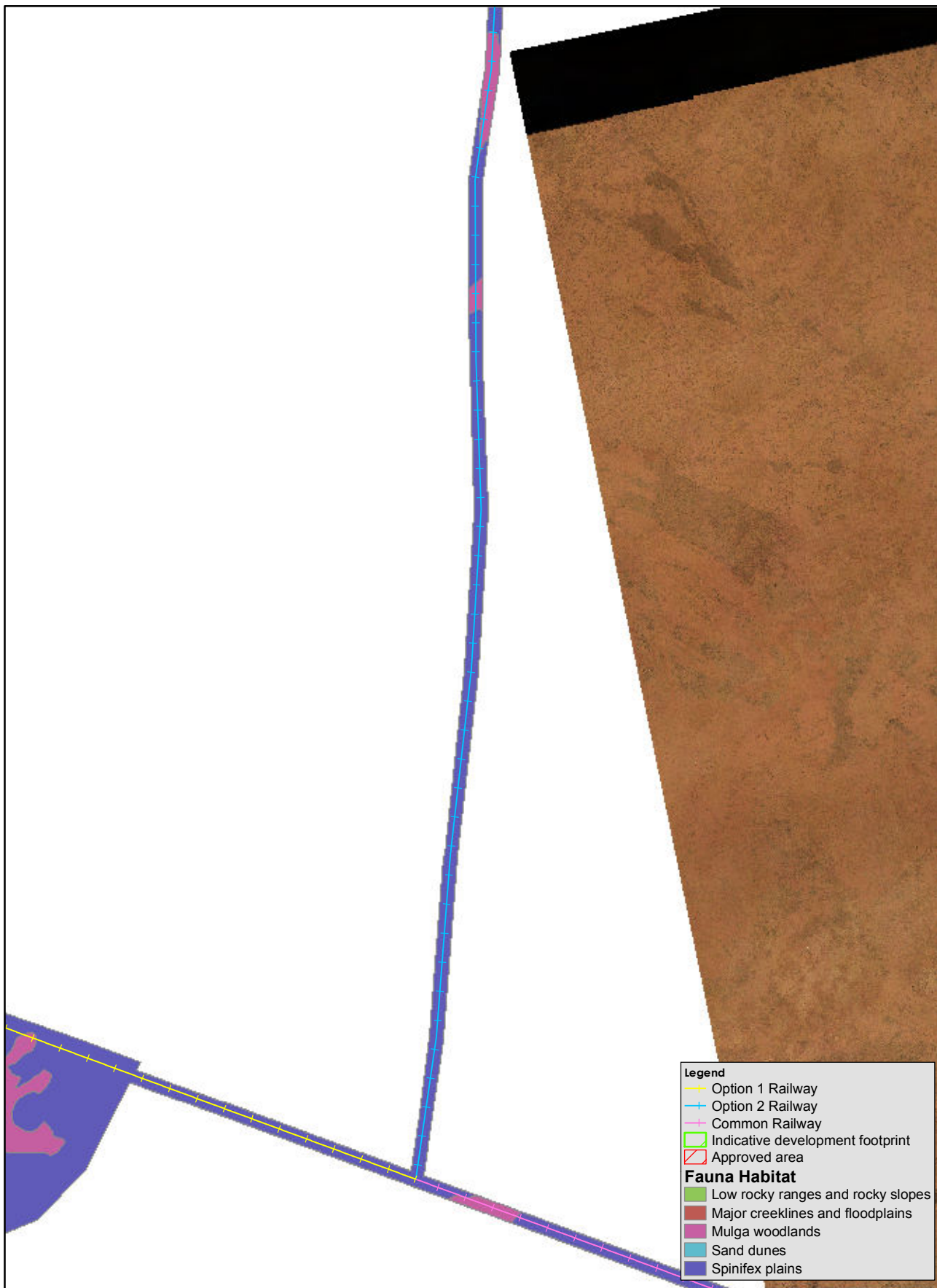
1:80,000  
at A4

Coordinate System: GDA 1994 MGA Zone 50  
Date: 8/08/2011  
Author: atomeo  
Path: Q:\Consult\2011\FER\FER11068.01\Projects\Environ\_Approv\_Mine\_Rail\Appendix\_22\_Mapbook.mxd

Source: Data recieved from Client.  
Fauna Habitat data recieved from Phoenix.  
Note that positional errors may occur in some areas



INDEX



Map 18: fauna habitat mapping