

# Template

## Proposal Content Document

**Table 1:** General proposal content description

<b>Proposal title</b>	Fimiston Gold Mine Operations Extension (Stage 3) and Mine Closure Planning Revised Proposal: Fimiston South Project
<b>Proponent name</b>	Kalgoorlie Consolidated Gold Mines
<b>Short description</b>	<p>The proposal is to mine a cutback of the existing Fimiston Open Pit, with associated life of mine tailings deposition, waste capacity and associated infrastructure.</p> <p>The proposal includes, but is not limited to:</p> <ul style="list-style-type: none"> <li>• Increase in the Mine Development Envelope</li> <li>• Cutback of the Fimiston Open Pit</li> <li>• Modifying the Environmental Noise Bund</li> <li>• Additional tailings capacity</li> <li>• Additional waste rock dump capacity</li> <li>• Additional infrastructure areas (topsoil storage, roads, pipeline corridors)</li> <li>• Infrastructure to manage surface water</li> </ul>

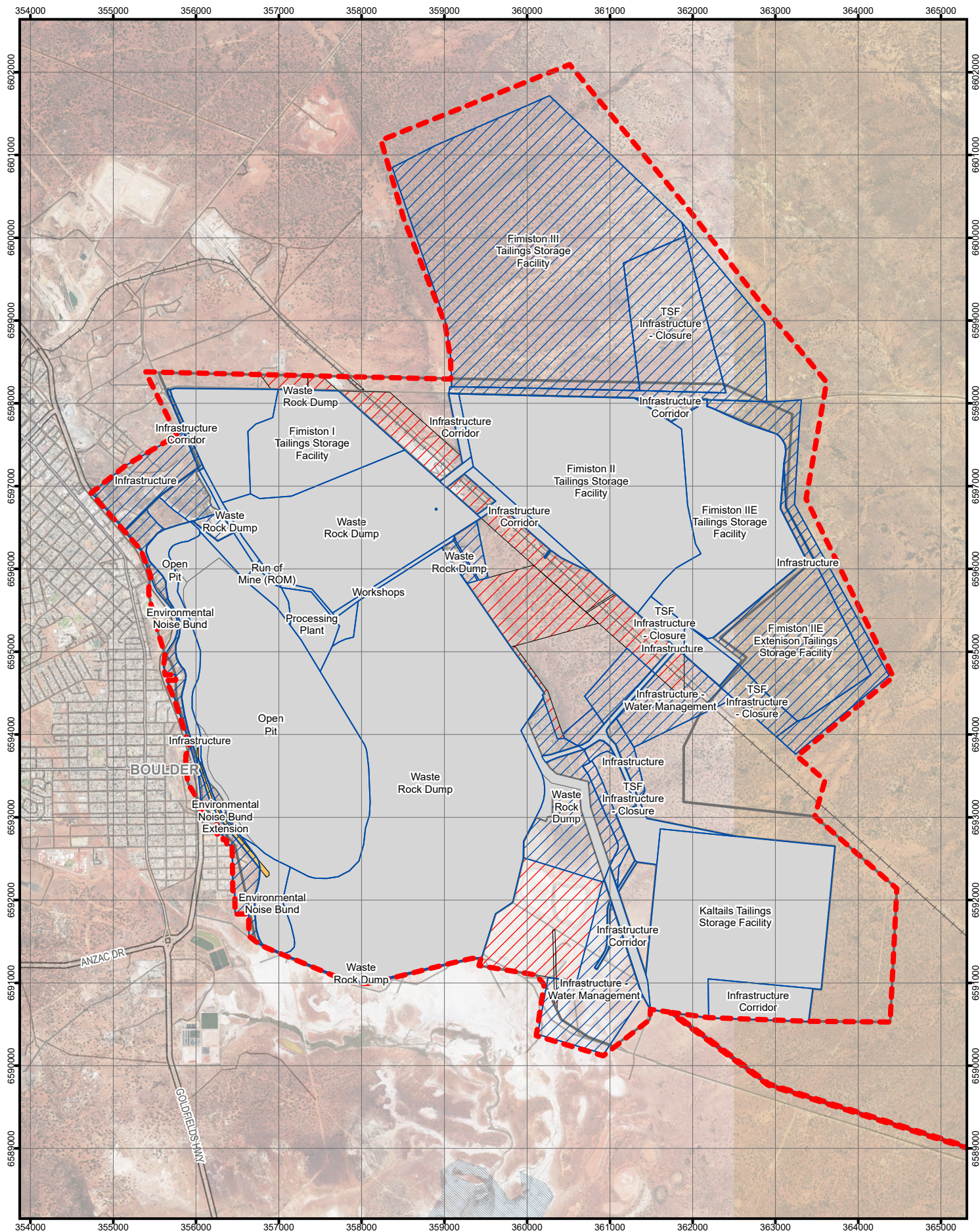
**Table 2:** Proposal content elements

Proposal element	Location / description	Existing Proposal extent, capacity or range	Proposed maximum extent, capacity or range	Combined Max extent, capacity or range
<b>Physical elements</b>				
Mine Development Envelope, including: <ul style="list-style-type: none"> <li>• Fimiston Open Pit</li> <li>• Environmental Noise Bund</li> <li>• Waste rock dumps (including stockpiles)</li> <li>• Tailings Storage Facilities</li> <li>• ROM and processing plant</li> <li>• Infrastructure corridors and workshop area</li> </ul>	Figure 3	Clearing of up to 3,973 ha** within the Development Envelope of 5,914 ha.  ** Currently approved MS782 has 3,973 ha in the documentation, but 3,857 ha in the spatial data	Additional clearing of 1,868 ha, of which 1,580 ha is native vegetation.	Clearing of up to a total of 5,841 ha within the Development Envelope of 7,795 ha.

Proposal element	Location / description	Existing Proposal extent, capacity or range	Proposed maximum extent, capacity or range	Combined Max extent, capacity or range
• Managed Aquifer ReInjection (MAR) within existing Kaltails Supply Borefield				
<b>Construction elements-</b> not applicable				
<b>Operational elements</b>				
Fimiston Open Pit footprint spatial limit	Figure 3	Clearing up to 535 ha within Development Envelope	Additional clearing of 39 ha	Clearing up to 574 ha within Development Envelope
Environmental Noise Bund footprint spatial limit	Figure 3	Clearing up to 110 ha within Development Envelope	Reduction of 5ha	Clearing up to 105ha within Development Envelope
<b>Greenhouse gas emissions</b>				
Peak annual average (2024-26)				
Scope 1	Mining and Processing Operations	Scope 1 + 2 Approximately 440,800 tonnes per year of carbon dioxide equivalent (CO2-e)	Approximately 237,300 tonnes per year of carbon dioxide equivalent (CO2-e)	Approximately 414,600 tonnes per year of carbon dioxide equivalent (CO2-e)
Scope 2	Electricity use		Approximately 177,300 tonnes per year of carbon dioxide equivalent (CO2-e)	
Annual average life of mine (2024-2034)				
Scope 1	Mining and Processing Operations		Approximately 235,200 tonnes CO <sub>2</sub> e	Approximately 235,200 tonnes CO <sub>2</sub> e
Scope 2	Electricity use		Approximately 19,800 tonnes CO <sub>2</sub> e	Approximately 19,800 tonnes CO <sub>2</sub> e
<b>Total (based on annual average Scope 1 and Scope 2) 11 yrs life of mine (2024-2034)</b>				

Proposal element	Location / description	Existing Proposal extent, capacity or range	Proposed maximum extent, capacity or range	Combined Max extent, capacity or range
Approximately 2,804,100 tonnes CO <sub>2</sub> e			Approximately 2,804,100 tonnes CO <sub>2</sub> e	Approximately 2,804,100 tonnes CO <sub>2</sub> e

<b>Commissioning – not applicable</b>			
Not applicable. Fimiston is currently operational.			
<b>Rehabilitation and closure</b>			
Progressive rehabilitation will be undertaken over the life of mine. Areas disturbed through implementation of this proposal will be designed to be safe and non-polluting and will meet the closure objectives documented in the Mine Closure Plan			
<b>Other elements which affect extent of effects on the environment</b>		<b>Existing LOM</b>	<b>Proposed LOM</b>
Proposal time*	Estimated project life	2027	2034



PROJECT ID 60607697  
 CREATED BY FLETTN  
 APPROVED BY DUNLOPM  
 LAST MODIFIED 22 AUG 2022

**AECOM**  
 www.aecom.com

Datum: GDA 1994 MGA Zone 51

1:60,000  
 (when printed at A4)

0 200 400 600 800 metres

Data sources:  
 Base Data: (c) Based on information provided by and with the permission of the Western Australian Land Information Authority trading as Landgate (2010)  
 Service Layer Credits: Landgate, Subscription, Imagery/WANow  
 World Terrain Base: Esri, HERE, Garmin, FourSquare, METI/NASA, USGS

**LEGEND**

- - - Proposed Mine Development Envelope
- Current EPA Approved Boundary
- Tenements held by others
- Proposed New Disturbance Area
- Approved Disturbance Area
- Proposed Noise Bund Construction

**Indicative Site Layout**

**KALGOORLIE CONSOLIDATED GOLD MINES**  
**FIMISTON GOLD MINE OPERATIONS EXTENSION (STAGE 3) AND MINE CLOSURE PLANNING REVISED PROPOSAL**

**Figure 3**