

# Orebody 29/30/35 Significant Amendment Proposal Content Document

**November 2024**  
**Version 1**

## Document amendment record

Version	Version description	Key changes	Date
0	Draft Version for Traditional Owner Review	Original document	22/8/2024
1	Final version as part of the EPA referral of the Orebody 29/30/35 Significant Amendment	Minor editorial updates	5/11/2024

## Introduction

BHP has prepared the Proposal Content Document for the Combined Proposal (Approved Proposal and Significant Amendment), consistent with the EPA's *Instructions: How to identify the content of a Proposal* (EPA 2024b) (the instructions).

As required by the Instructions, amendments to the existing General proposal description of the Approved Proposal are summarised below and the consolidated, updated General proposal description for the Combined Proposal is presented in Table 1. The proposal elements and amendments which have the potential to have a significant effect on the environment are quantified in Table 2.

## Summary of proposal content amendments

### *Proponent name*

- Amended from BHP Billiton Iron Ore Pty Ltd to BHP Iron Ore Pty Ltd.

### *Short description*

- include specific activities and elements of the Approved Proposal, consistent with the Instructions
- include the construction of a pipeline from the mine to Ophthalmia Dam.

**Table 1: General proposal content description**

<b>Proposal title</b>	Orebody 29/30/35
<b>Proponent name</b>	BHP Iron Ore Pty Ltd
<b>Short description</b>	<p>The Proposal is to construct and operate the Orebody 29/30/35 mine, located approximately 7 kilometres (km) west-south-west of Newman in the Shire of East Pilbara (Figure 1).</p> <p>The Proposal includes, but is not limited to the following activities and elements:</p> <ul style="list-style-type: none"> <li>• mine pit excavation above and below the water table</li> <li>• groundwater abstraction to dewater mine deposits and for water supply</li> <li>• dewatering, water supply and surplus water infrastructure including bores and pipelines</li> <li>• surplus water management and discharge of surplus water to Ophthalmia Dam</li> <li>• mineral waste management including overburden storage areas.</li> </ul> <p>The Proposal is located within a 1,346 hectare (ha) Development Envelope and will require the clearing of up to 116 ha of native vegetation.</p> <p>Existing approved facilities at Mt Whaleback will be used to support the proposal, including processing facilities, machinery fleet, support services and facilities and overburden storage areas (OSAs) for waste rock.</p>

Table 2: Proposal content elements

Element	Location / description	Existing proposal maximum extent, capacity or range (Approved Proposal)	Proposed amendment extent, capacity or range (the Proposal – Significant Amendment)	Combined maximum extent, capacity or range (Amended Proposal)
<b>Physical elements</b>				
Mine elements, including: Open pits Overburden Storage Area (OSA)	Figure 2	<b>Part IV approved (MS963)</b> Development Envelope of 456 ha  <b>Part V approved (Native Vegetation Clearing Permit (NVCP 5617/6))</b> Clearing of 2010.3 ha of native vegetation within the NVCP boundary	Clearing of 116 ha of native vegetation  Additional Development Envelope area of 890 ha	Clearing of up to 116 ha of native vegetation within a 1,346 ha Development Envelope
<b>Operational elements</b>				
Groundwater abstraction	Figure 2	<b>Part IV approved (MS963)</b> Groundwater abstraction of up to 8 GL/a	Additional groundwater abstraction for mine pit dewatering of up to 16.5 GL/a	Groundwater abstraction of up to 24.5 GL/a
Surplus water management – discharge to Ophthalmia Dam	Figure 2	<b>Part IV approved (MS963)</b> Discharge of up to 8 GL/a	Additional discharge of up to 12.8 GL/a	Discharge of up to 20.8 GL/a
Mine voids and pit lakes	Figure 2	Not specified	No change	Option for open voids and formation of pit lakes
Ore processing		Not specified, not assessed under Part IV  <b>Part V approved</b> Mt Whaleback/Orebody 29/30/35 Part V L4503/1975/14 Processing or beneficiation of metallic or non-metallic ore of 80 Million tonnes per annum (Mtpa)	No change	Up to 80 Mtpa

Element	Location / description	Existing proposal maximum extent, capacity or range (Approved Proposal)	Proposed amendment extent, capacity or range (the Proposal – Significant Amendment)	Combined maximum extent, capacity or range (Amended Proposal)
<b>Greenhouse Gas Emissions</b>				
<b>Peak annual</b>				
Scope 1	Diesel consumption and land clearing (mining)	Not specified; not assessed under Part IV	48,649 tCO <sub>2</sub> -e per annum (2028)	Up to 119,091 tCO <sub>2</sub> -e per annum (2028)
Scope 1	Electricity demand <sup>1</sup>	Not specified; not assessed under Part IV	14,285 tCO <sub>2</sub> -e per annum (2043)	Up to 24,618 tCO <sub>2</sub> -e per annum (2030)
Scope 1	Rail iron ore transport (including rail and port) <sup>1</sup>	Not specified; not assessed under Part IV	17,992 tCO <sub>2</sub> -e per annum (2043)	Up to 33,022 tCO <sub>2</sub> -e per annum (2030)
Scope 3	Downstream emissions (including port, iron ore shipping and steel making)	Not specified; not assessed under Part IV	12,988,954 tCO <sub>2</sub> -e per annum (2043)	24,193,467 tCO <sub>2</sub> -e per annum (2030)
<b>Annual average life of mine<sup>2</sup></b>				
Scope 1	Diesel consumption and land	Not specified; not assessed under Part IV	-2,601 tCO <sub>2</sub> -e per annum (Decrease in Scope 1 emissions)	Up to 47,870 tCO <sub>2</sub> -e per annum

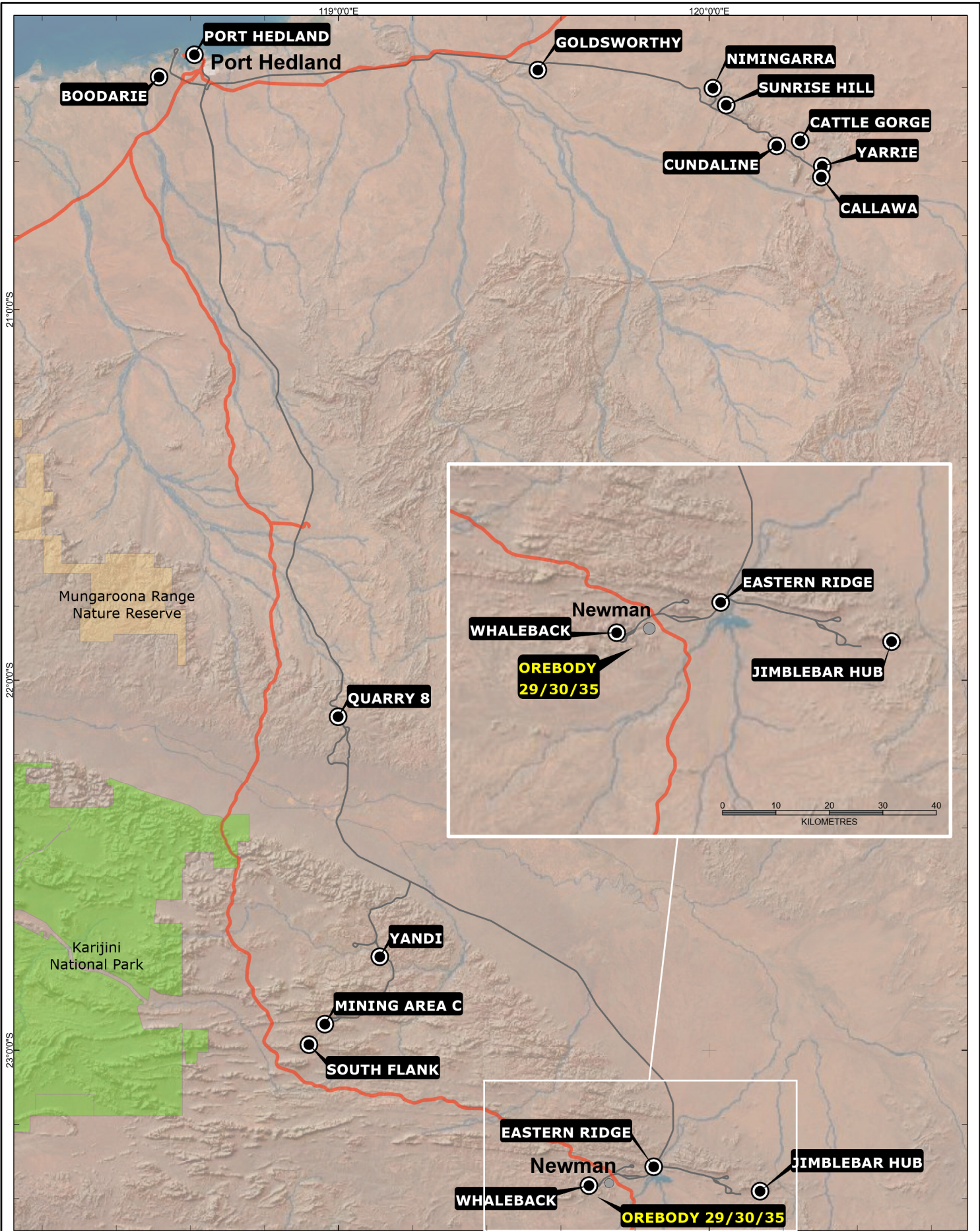
<sup>1</sup> In the context of BHP's Regional GHG Management Plan, emissions which occur outside of the Development Envelope associated with Yarnima Power Station and Rail transport operations, these are identified as Scope 1 emissions. Although these emissions are from sources outside of the Development Envelope for the Proposal, they occur within BHP's Regional GHGMP boundary. BHP takes a regional approach to the management of GHG emissions, and as such these emissions are classified as Scope 1.

<sup>2</sup> Annual excludes periods of relatively low emissions from land-use change after cessation of mining activity to better represent average operational emissions of mining activity. For the Proposal and the Amended Proposal, the average is over FY2025 to FY2049.

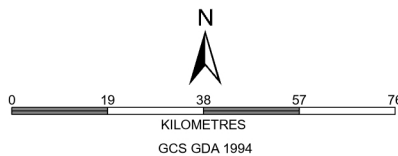
Element	Location / description	Existing proposal maximum extent, capacity or range (Approved Proposal)	Proposed amendment extent, capacity or range (the Proposal – Significant Amendment)	Combined maximum extent, capacity or range (Amended Proposal)
	clearing (mining)			
Scope 1	Electricity demand <sup>1</sup>	Not specified; not assessed under Part IV	712 tCO <sub>2</sub> -e per annum	Up to 10,336 tCO <sub>2</sub> -e per annum
Scope 1	Rail iron ore transport <sup>1</sup>	Not specified; not assessed under Part IV	0 tCO <sub>2</sub> -e per annum	Up to 13,332 tCO <sub>2</sub> -e per annum
Scope 3	Downstream emissions (including port, iron ore shipping and steel making)	Not specified; not assessed under Part IV	0 tCO <sub>2</sub> -e per annum	9,787,488 tCO <sub>2</sub> -e per annum
<b>Total (based on annual average Scope 1)<sup>2</sup> – 25 year life of mine</b>			-1,889 tCO <sub>2</sub> -e (Decrease in Scope 1 emissions to life of mine by 25 years)	71,538 tCO <sub>2</sub> -e (25 years life of mine)
<b>Other elements which affect extent of effects on the environment</b>				
Maximum project life		Not specified; not assessed under Part IV	Additional 5 years of operations	Total estimated mine life of 50 years from the date of issue of the statement, including: <ul style="list-style-type: none"> <li>construction and mine operation: 40 years<sup>3</sup></li> <li>decommissioning and closure: 10 years</li> </ul>
<b>Commissioning</b>				

<sup>3</sup> Dewatering for BWT mining is planned for 40 years, but additional time is required for other elements and activities associated with the Combined Proposal.

Element	Location / description	Existing proposal maximum extent, capacity or range (Approved Proposal)	Proposed amendment extent, capacity or range (the Proposal – Significant Amendment)	Combined maximum extent, capacity or range (Amended Proposal)
Commissioning of the additional dewatering infrastructure will be undertaken subject to the operational elements above				
<b>Rehabilitation and closure</b>				
Progressive rehabilitation will be undertaken, where practicable, when disturbed areas are no longer required for operations. Any permanent pit lake that forms following the permanent cessation of dewatering (if backfilling above the water table cannot be achieved) will be designed and managed to be safe and non-polluting.				



- BHP mine
- National Park
- Nature Reserve
- Highway
- Rail



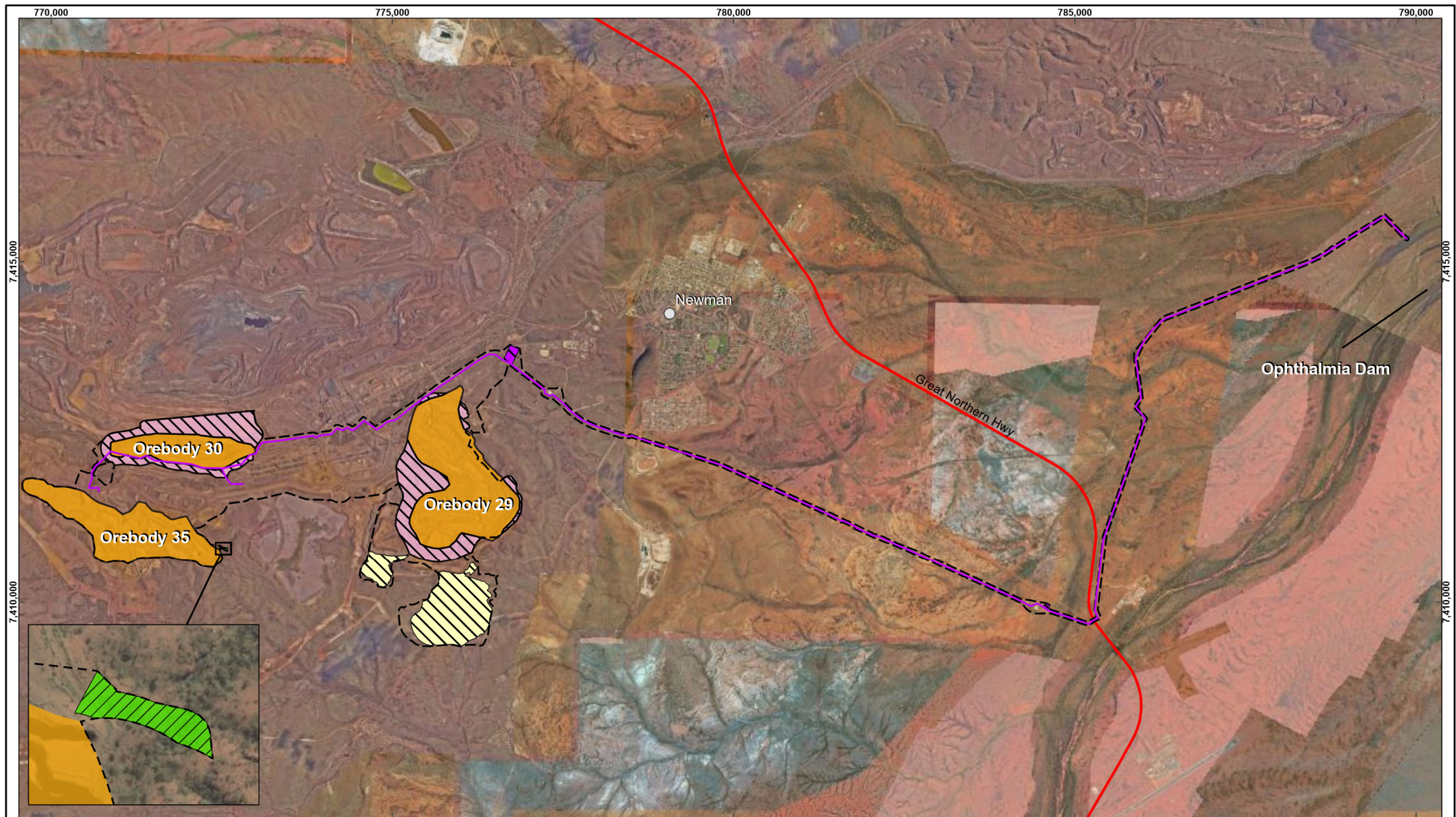
**BHP**

**PUBLIC**

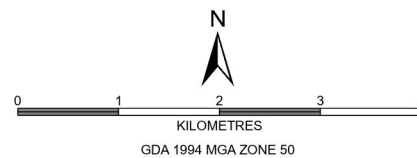
## OREBODY 29/30/35 SIGNIFICANT AMENDMENT Regional Location

PLANNING & STANDARDS - IRON ORE

SCALE @A4:	1:1,500,000	PREPARED:	GEOMATICS	FIGURE:	1
DATE:	5/08/2024	REQUESTOR:	ENV. APPROVALS	NO:	A929_042E



- Pipeline and Laydown Areas
- Development Envelope
- Indicative Footprint
- Ministerial Statement 963
- Pit Expansion
- OSA
- OB35 ramp
- Highways



**BHP**

**PUBLIC**

**OREBODY 29/30/35  
SIGNIFICANT AMENDMENT**  
Development Envelope  
and Indicative Footprint  
**PLANNING & STANDARDS - IRON ORE**

SCALE @ A4:	1:75,000	PREPARED: GEOMATICS	FIGURE: 2
DATE:	21/11/2024	REQUESTOR: ENV. APPROVALS	

NO: **A929\_041G**