

Proposal Content Document

Table 1: General proposal content description

Proposal title	Waitsia Gas Project Stage 2
Proponent name	AWE Perth Pty Ltd
Short description	The Waitsia Gas Project Stage 2 is a conventional gas proposal located about 16 km east-south-east of the Dongara-Port Denison town sites. The proposal includes the construction and operation of a 91.25 Petajoules per annum gas plant and related infrastructure.

Table 2: Proposal content elements

Proposal element	Location / description	Existing Proposal maximum extent, capacity or range	Proposed amendment	Combined maximum extent, capacity or range
Physical elements				
Gas plant and associated infrastructure	Figure 1	Clearing of no more than 16.5 ha of native vegetation within a 409.25 ha development envelope	Increase in the extent of the development envelope	Clearing of no more than 16.5 ha of native vegetation within a 580.9 ha development envelope
Gas production wells	Figure 1	Up to 8 (including 2 existing)	Increase in the maximum number of gas production wells	Up to 19
Production formation water disposal wells	Figure 1	Up to 3	No change	Up to 3
Disturbance footprint	Figure 1	Up to 397.75 ha within the 409.25 ha	Increase in the extent of the disturbance footprint	Up to 479.2 ha within the 580.9 ha development envelope
Construction elements				
Not applicable	-	-	-	-

Proposal element	Location / description	Existing Proposal maximum extent, capacity or range	Proposed amendment	Combined maximum extent, capacity or range
Operational elements				
Gas production facility capacity	Figure 1	Up to 250 Terajoules per day	Annualisation of capacity	Up to 91.25 Petajoules per annum
Gas extraction method	-	Conventional	No change	Conventional
Greenhouse gas emissions				
Construction				
Scope 1	-	Clearing of vegetation: < 3,500 tonnes CO ₂ -e	No change	Clearing of vegetation: < 3,500 tonnes CO ₂ -e
Operations				
Scope 1	-	Up to 300,000 tonnes CO ₂ -e per annum	No change	300,000 tonnes CO ₂ -e per annum
Scope 2	-	None	No change	None
Rehabilitation				
Following completion of construction, partial rehabilitation of the disturbance required for construction of the Waitsia-03 flowline. The proposed amendment will not result in further disturbance in the Waitsia-03 flowline corridor.				
Commissioning				
Commissioning of the production facility will be undertaken subject to the operational limits above				
Decommissioning				
Isolation of productive formations from other formations Cutting off well heads below ground level Removal of production facility infrastructure except where landowner consent is given for infrastructure to remain in place				
Other elements which affect extent of effects on the environment				
Proposal time*				
Maximum project life	-	30 years	No change	30 years

Proposal element	Location / description	Existing Proposal maximum extent, capacity or range	Proposed amendment	Combined maximum extent, capacity or range
Construction phase	-	3 years	Increase in construction time	5 years
Operations phase	-	20 years	No change	20 years
Decommissioning phase	-	Progressive decommissioning of areas that are no longer required	No change	Progressive decommissioning of areas that are no longer required

** Proponents should only provide realistic timeframes to avoid unnecessary change to proposal applications at referral (section 38C), assessment (section 43A) or post assessment (section 45C).*

308000

310000

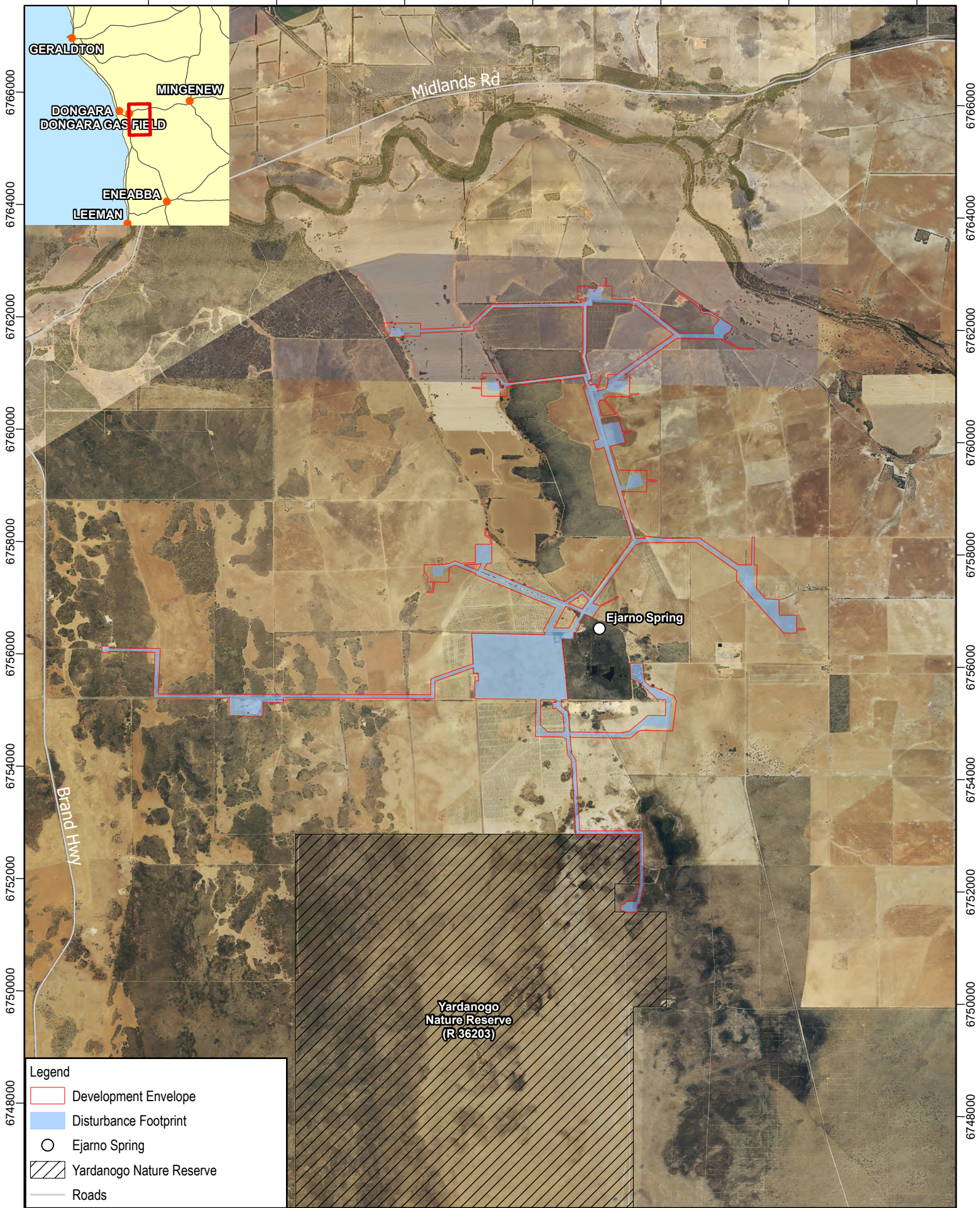
312000

314000

316000

318000

320000



Legend

- Development Envelope
- Disturbance Footprint
- Ejarno Spring
- Yardanogo Nature Reserve
- Roads



MITSUI E&P
Australia

DISCLAIMER: All information within this document may be based on external sources. SLR Consulting Pty Ltd makes no warranty regarding the data's accuracy or reliability for any purpose.

N
0 1.3 2.6
Km

Coordinate System: GDA2020

Scale: 1:85,000 at A4

Project Number: 5345

Date Drawn: 24-Nov-2023

Drawn by: JH

Reviewed by: FB

Service Layer Credits:
Landgate / SLIP

AWE Perth Pty Ltd
Watsia Gas Project Stage 2:
Proposal Content Document

Development Envelope and
Disturbance Footprint

FIGURE 1