

Proposal Content Document

Table 1: General proposal content description

Proposal title	Browns Range Rare Earths Project
Proponent name	Northern Minerals Limited
Short description	A rare earth elements (REE) mine and ore processing facility at Browns Range, approximately 160 (km) southeast of Halls Creek in the Shire of Halls Creek.

Table 2: Proposal content elements

Proposal element	Location / description	Maximum extent, capacity or range
Physical elements		
Mine pits and underground operations, infrastructure area and haul road.	Figure 1	Clearing of not more than 841 ha of vegetation within the development envelope of 4,753 ha.
Construction elements		
Water Abstraction	N/A	Not defined
Operational elements		
Water abstraction from borefield	N/A	Up to 1.3 GL/year
Mine dewatering (cumulative across all deposits)	N/A	Up to 0.79 GL/year
Proposal elements with greenhouse gas emissions		
Construction elements:		
Scope 1	<u>Land use change – vegetation clearing:</u> approximately 89,852 t CO ₂ -e <u>Power and Mobile Plant average per annum:</u> 19,397 t CO ₂ -e (58,191 t CO ₂ -e total) <u>Total Scope 1 Emissions:</u> 148,042 t CO ₂ -e	
Scope 2	None	

Proposal element	Location / description	Maximum extent, capacity or range
Scope 3	<u>Inputs - people movement, diesel deliveries and construction freight:</u> approximately 7,195 t CO ₂ -e per annum <u>Outputs - people movement, waste removal:</u> approximately 1,977 t CO ₂ -e per annum <u>Total Scope 3 Emissions:</u> 9,172 t CO ₂ -e per annum	
Operation elements:		
Scope 1	<u>Power generation:</u> average 10,559 t CO ₂ -e per annum <u>Mobile Plant:</u> average 7,110 t CO ₂ -e per annum <u>Totals:</u> Average: 17,669 t CO ₂ -e per annum Maximum per annum: 52,610 t CO ₂ -e Total: 176,689 t CO ₂ -e	
Scope 2	None	
Scope 3	<u>Inputs - people movement, diesel deliveries and general freight:</u> approximately 3,043 t CO ₂ -e per annum <u>Outputs - people movement, product transport, waste removal:</u> approximately 5,345 t CO ₂ -e per annum <u>Total:</u> 8,388 t CO ₂ -e per annum	
Rehabilitation		
Rehabilitation and closure will include progressive rehabilitation of disturbed areas and backfill to above the pre-mining groundwater level if further investigation to the end of Year 3 of the mining operation does not encounter additional mineable mineral resources.		
Commissioning		
Commissioning of processing facility to be undertaken subject to operational limits above.		
Decommissioning		
Removal of all process related infrastructure following cessation of operations (excluding periods of care and maintenance).		
Other elements which affect extent of effects on the environment		
Proposal time	Maximum project life	14 years
	Construction phase	2.5 years
	Operations phase	10 years
	Decommissioning phase	1.5 years

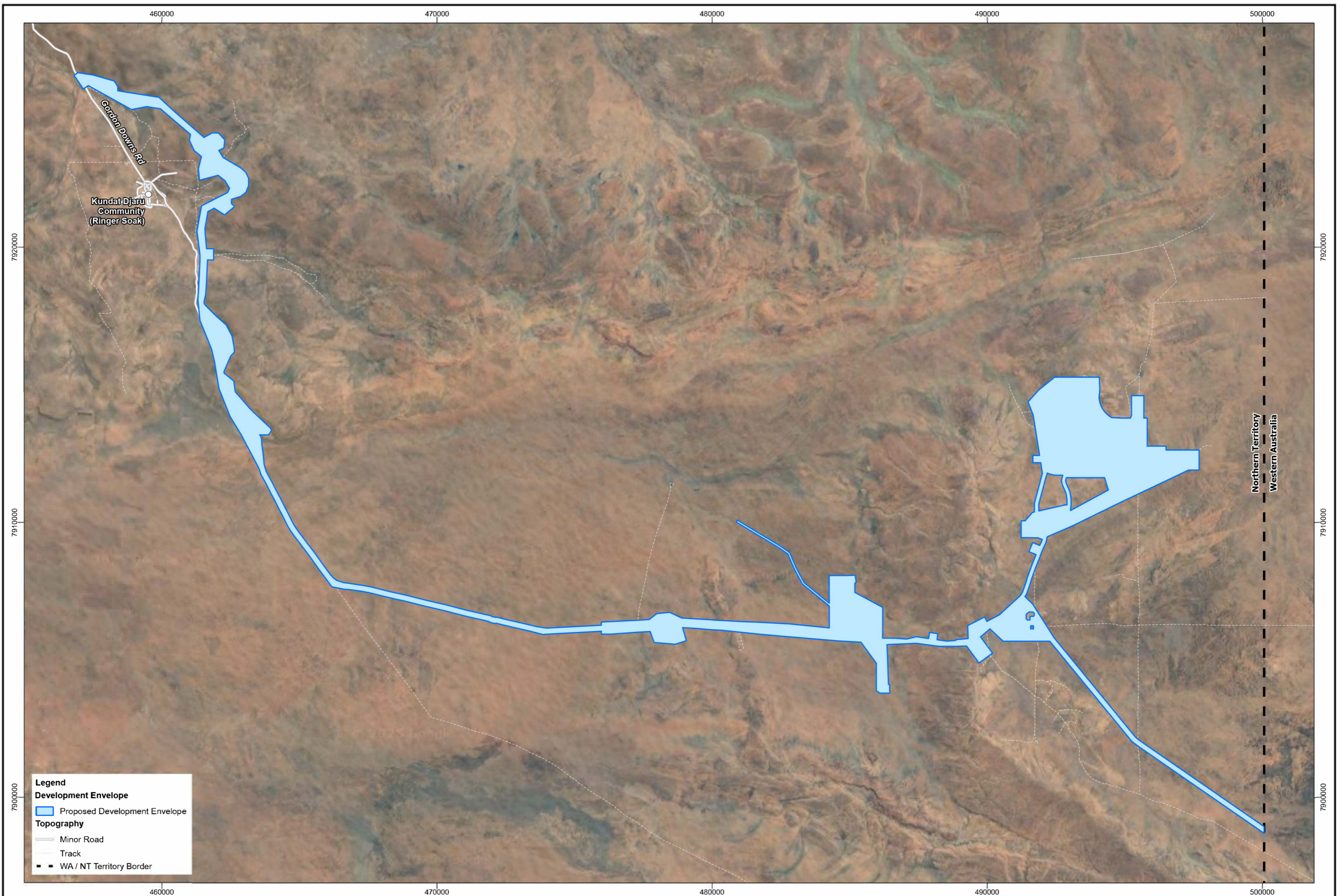


Figure 1: Development Envelope Boundary



0 1 2km
Scale: 1:125,000
MGA94 (Zone 52)



**Browns Range Project
Development Envelope
Overview**

Figure: a2969_S45c_AltAcc_F004_10_DE_PCP		
Author: J. Mahony	Date: 11/12/2025	Page: A3
Drawn: CAD Resources www.cadresources.com.au		Rev: A