

Template

Proposal Content Document

Table 1: General proposal content description

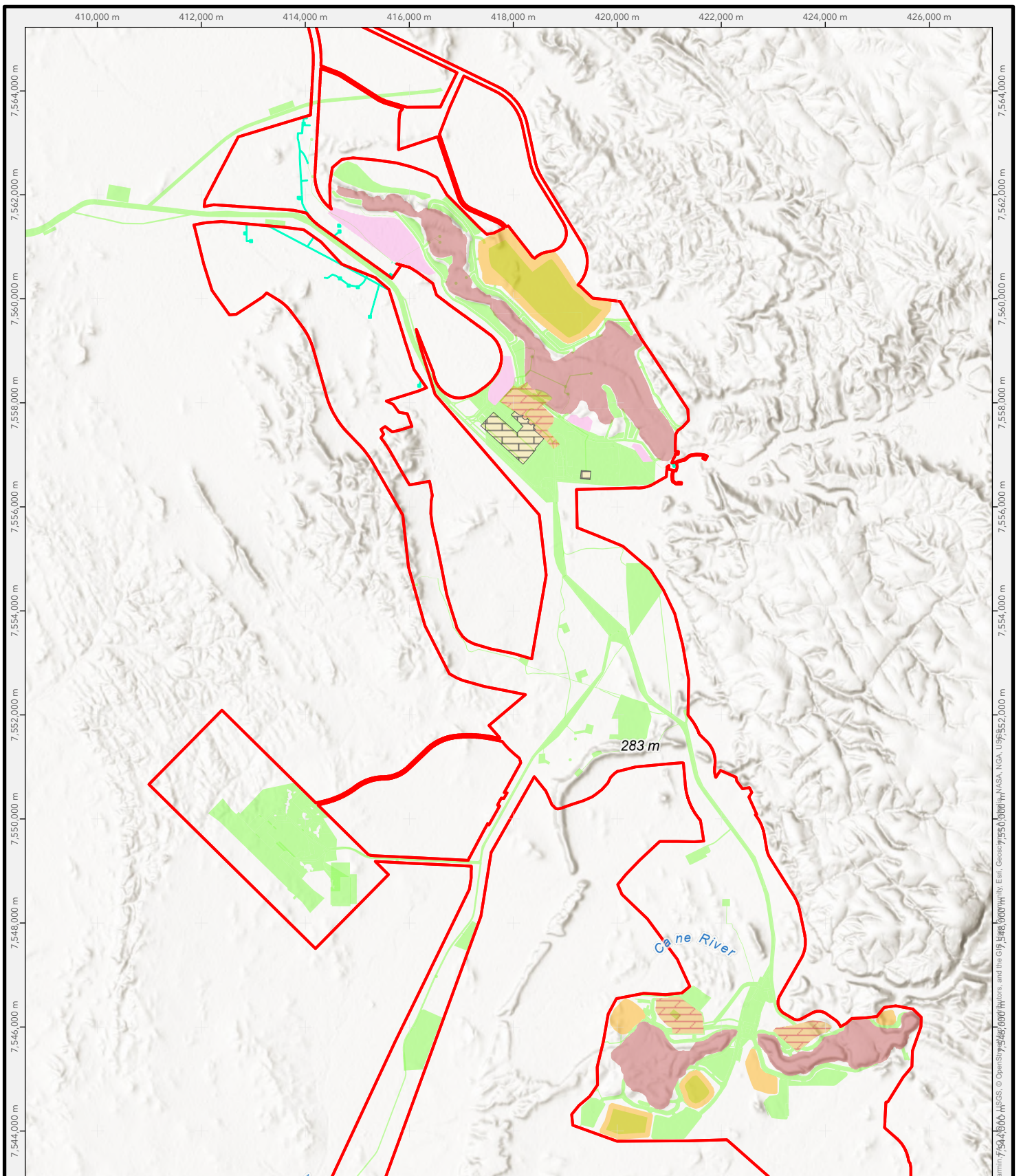
Proposal title	West Pilbara Iron Ore Project - Stage 1 Mine Area
Proponent name	Co-proponents: Onslow Iron Pty Ltd (ACN 649 012 395) and API Management Pty Ltd (ACN 112 677 595)
Short description	<p>The development of eight iron ore deposits at five locations, between 35 and 85 km south of Pannawonica. The eight deposits are Kens Bore, Upper Cane, Cardo Bore East, Cardo Bore North, Cochrane, Jewel, Catho Well, and Trinity Bore.</p> <p>The Proposal includes development of mining and other infrastructure, including mine pits, waste rock landforms, stockpiles, processing facilities, water diversion structures, borrow pits, roads, services, utilities, processing facilities and dewatering facilities.</p> <p>The Proposal is located within a 16,053 hectare (ha) Development Envelope and will require the clearing of up to 5445 ha of native vegetation.</p>

Table 2: Proposal content elements

Proposal element	Location / description	Maximum extent, capacity or range
Physical elements		
Mine elements, including: <ul style="list-style-type: none">• Open pits• Haul roads• Waste rock landforms• Topsoil stockpiles	Figure 2.1	Clearing of no more than 5445 ha within a 16,053 ha Mine Development Envelope.
Processing elements, including: <ul style="list-style-type: none">• Ore stockpiles• Crushing plant• Processing plant		
Infrastructure elements, including: <ul style="list-style-type: none">• Accommodation• Supporting infrastructure• Ancillary buildings		

Operational elements		
Indirect vegetation disturbance from sheetflow shadow		Indirect disturbance of not more than 110 ha of any significant vegetation community, including Mulga vegetation, considered to be highly reliant on surface water sheetflow.
Groundwater abstraction for water supply and mine dewatering		Abstraction of no more than 5 gigalitres per annum (GL/a)
Discharge of excess water		Discharge of no more than 1.5 GL/a
Overburden material management		Pits will be backfilled above the pre-mining water table
Commissioning		
Commissioning of the processing facility subject to operational limits above.		
Rehabilitation		
Progressive rehabilitation will be undertaken over the life of the mine with rehabilitation of pits commencing within one year of pit closure. Areas disturbed through implementation of this Proposal will be designed to be safe and non-polluting and will be constructed so that their final shape, size, stability, and ability to support local native vegetation are comparable to natural landforms in the area.		
Other elements which affect extent of effects on the environment		
Proposal time	Maximum project life - up to 2052	

Note that based on recent announcements from the WA State Government regarding management of greenhouse gases being a Federal Government issue, the above table does not include greenhouse gas emissions as a Proposal Element.



Legend

- MS1027/MS1203 Development Envelope
- Waste dump or overburden stockpile (class 1)
- MinRes Approval Details (Areas)**
- Other mining activities
- Key Mine Activities**
- Low-grade ore stockpile (class 1)
- Indicative Disturbance
- Mining void (with a depth of at least 5 metres)
- above ground water level
- Plant site
- Run-of-mine pad



INDICATIVE MINE SITE LAYOUT

0 1 2 3 4 km

Scale @ A4: 1:100,000
GDA2020 MGA Zone 50

L003_Layout_Final_A4PH_Rev1

Drawn By: nic.flett

Reviewed By: Annabelle McGuiness 5/12/2025



Figure: **2-1**

Disclaimer: This product is for informational purposes and may not have been prepared for or be suitable for legal, engineering, or surveying purposes.

MRL: Environmental Compliance and Systems 2021, Sources: Esri, TomTom, Garmin, 7544600, USGS, © OpenStreetMap contributors, and the GIS User Community, NASA, NGA, USGS, 7552000, 7554000, 7556000, 7558000, 7560000, 7562000, 7564000