

# Roy Hill Revised Proposal - MS 1189

## Proposal Content Document

**Table 1:** General proposal content description

<b>Proposal title</b>	<b>Revised Proposal for the Roy Hill Iron Ore Mine</b>
<b>Proponent name</b>	Roy Hill Iron Ore Pty Ltd
<b>Short description</b>	The revised proposal is to mine and process Iron Ore and to develop and operate associated infrastructure 110 km north of Newman in the Pilbara region of Western Australia.

**Table 2:** Proposal content elements

<b>Element</b>	<b>Location and description</b>	<b>Maximum extent, capacity or range</b>
<b>Physical elements</b>		
Disturbance Footprint	Figures 1a and 1b	No more than 17,395 ha
Location of Disturbance Footprint	Figures 1a and 1b	<p>Within the development envelope</p> <p>Not within the Flora Exclusion Area</p> <p>Not within the Ghost Bat Exclusion Area</p> <p>Not within the Heritage Exclusion Area except for the purposes of:</p> <ul style="list-style-type: none"> <li>• An access road/haulage road</li> <li>• Rehabilitation of existing disturbed areas</li> <li>• Environmental monitoring activities</li> </ul> <p>Not within the sheet flow buffer area except for the purpose of South-West Injection Borefield infrastructure</p>
Overburden	N/a	3,330 Mt overburden to be used as pit infill, used for construction of infrastructure and stored in out of pit dumps
In-pit tailings storage facilities	Figure 3	Only in mine pits shown in Figure 3
Borefields	Figure 2	Within the indicative borefield envelopes shown in Figure 2
Surface Water Diversion structures	N/a	Permanent surface water diversion structures, rather than reinstatement of creeks following backfill of mine pits and decommissioning of mine infrastructure.

Element	Location and description	Maximum extent, capacity or range
Evaporation ponds and SWIB recharge basins	Figure 4	Avoid the drainage lines (watercourse) shown in Figure 4
<b>Operational elements</b>		
Ore Acceptance (External Ore)	N/a	Iron ore from the Pilbara, Western Australia
Mineral resources	N/a	1 Bt Marra Mamba Ore, 1 Bt Detrital Ore
Depth of pits	N/a	No more than 120 m below ground level
Mine pit dewatering volumes	N/a	No more than 626 GL
Excess water used for dust suppression	N/a	No more than 7.4 GL per annum
Disposal of excess water to evaporation ponds	N/a	No more than 540 ha
Excess water disposal by reinjection basins, and aquifer injection at: <ul style="list-style-type: none"> <li>• South-West Injection borefield</li> <li>• Remote MAR borefield</li> <li>• Southern borefield</li> <li>• Stage 1 borefield</li> <li>• Mine borefield</li> </ul>	Figure 2 Figures 1a and 1b	No more than 508 GL
Volume of water supply from Southern Borefield	N/a	No more than 150 GL
<b>Greenhouse gas emissions</b>		
Average annual emissions		
Scope 1		450,000 tCO <sub>2</sub> equivalent per annum
Scope 2		288,000 tCO <sub>2</sub> equivalent per annum
Scope 3		N/a
Life of mine emissions (2023-2032)		
Scope 1		4.39 MtCO <sub>2</sub> -e
Scope 2		3.17 MtCO <sub>2</sub> -e
Scope 3		N/a

Element	Location and description	Maximum extent, capacity or range	
<b>Rehabilitation</b>			
<p>After completion of activities, rehabilitation of cleared and disturbed areas will be undertaken to meet closure criteria in accordance with the Mine Closure Plan.</p> <p>Where practicable, progressive rehabilitation will be undertaken over the life of the mine.</p> <p>Areas disturbed through the implementation of the Proposal will be designed to be safe and non-polluting and will be constructed so the final shape, size, stability, are comparable with the natural landforms in the area.</p>			
<b>Commissioning</b>			
<p>Commissioning of the infrastructure and operational elements will be undertaken subject to the operational limits above.</p>			
<b>Decommissioning</b>			
<p>Mine infrastructure and landforms will be decommissioned in accordance with the Mine Closure Plan, this will include permanent surface water diversions.</p>			
<b>Other elements which affect extent of effects on the environment</b>			
Proposal time	Maximum project life/ life of mine	2032	No change

ROY HILL OPERATIONS

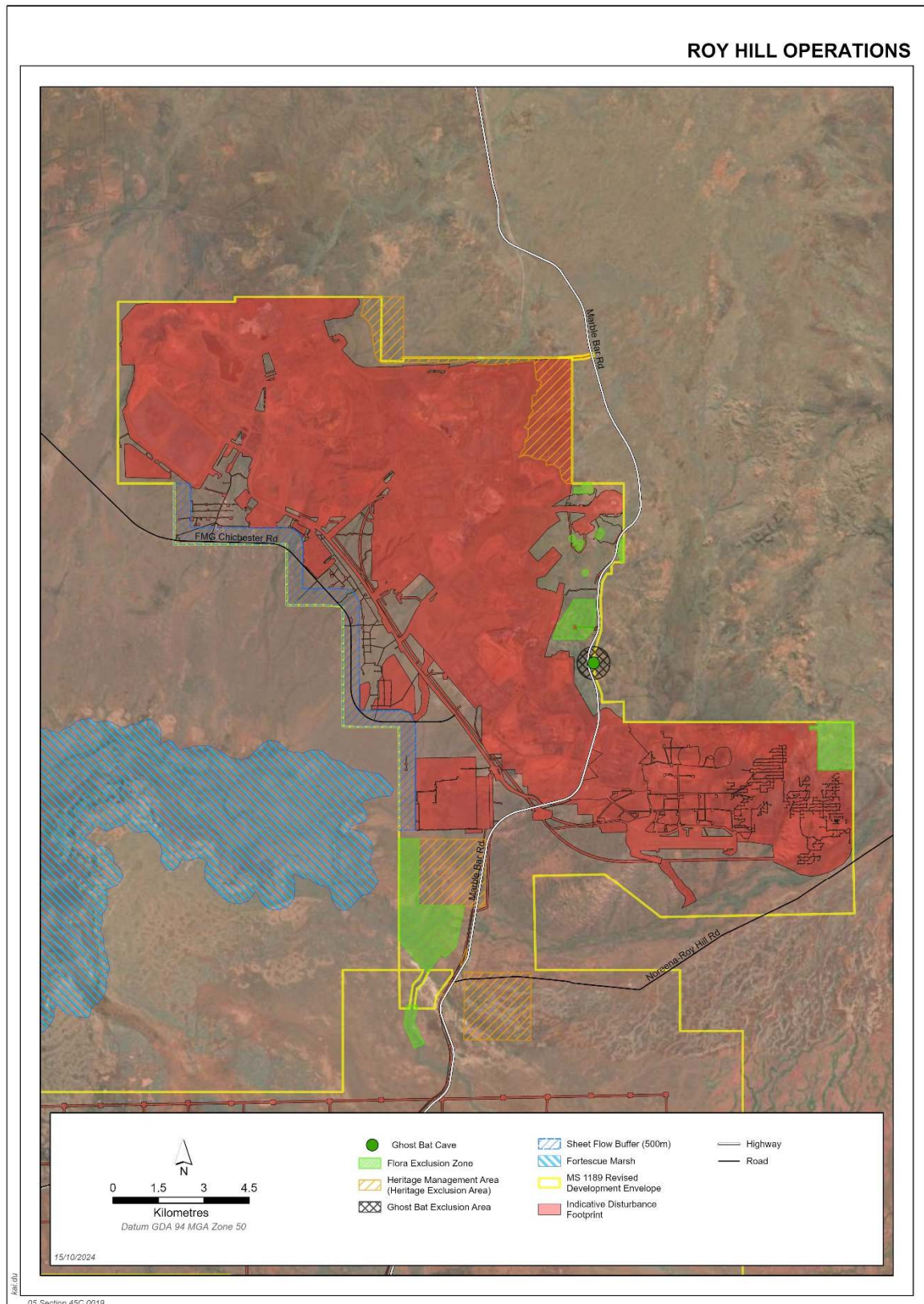
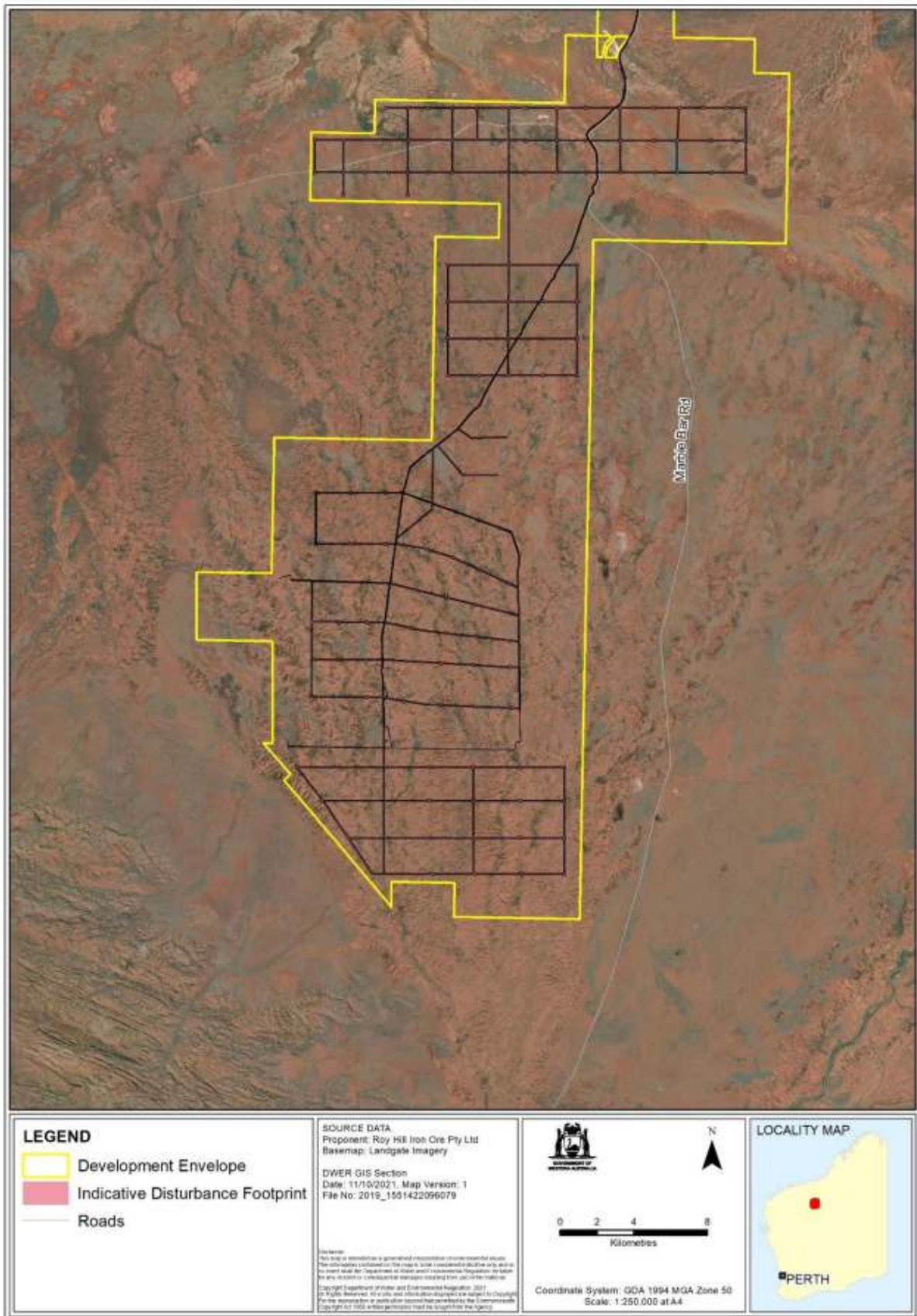
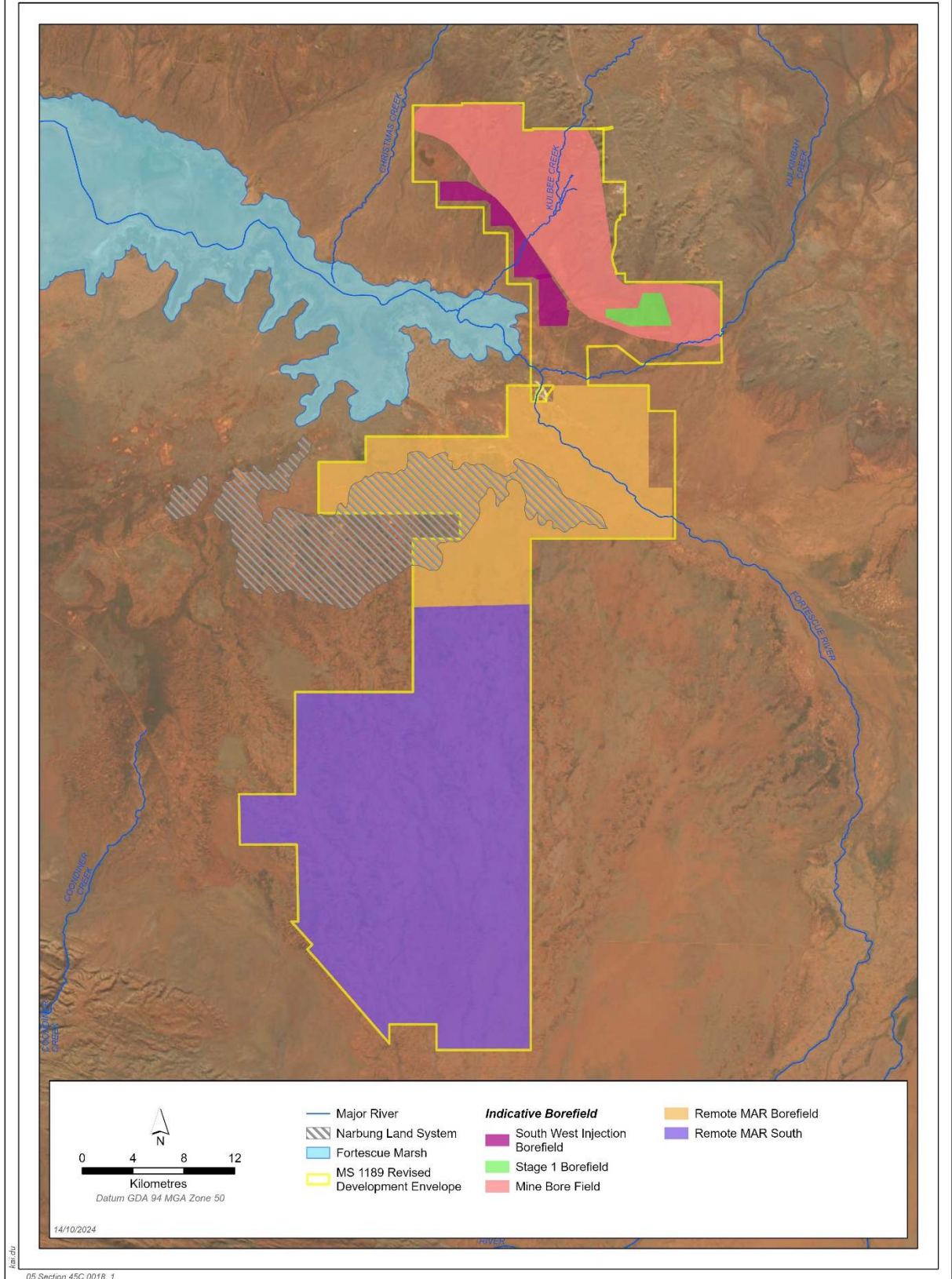


Figure 1a: Development Envelope (North)



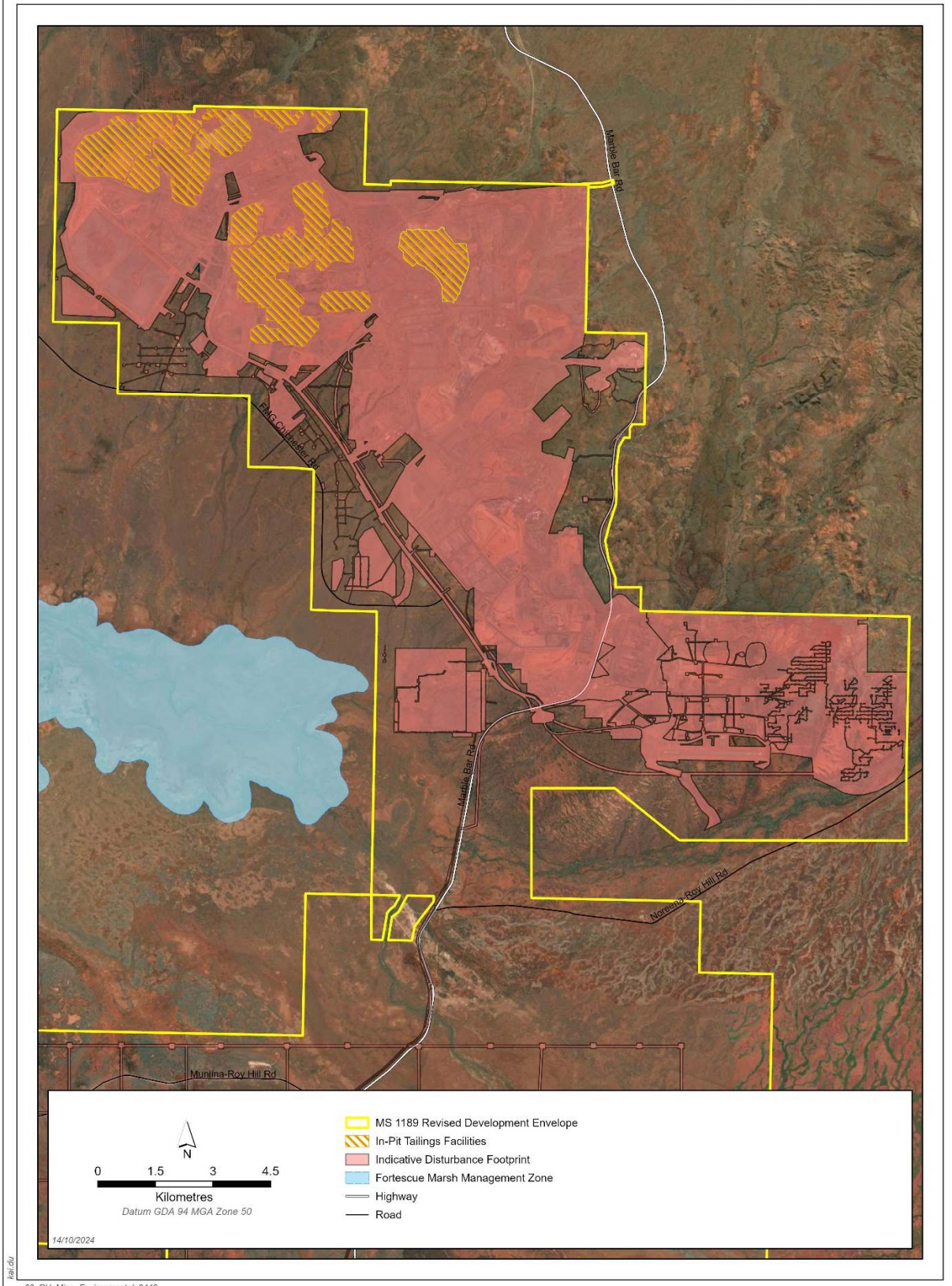
**Figure 1b: Development Envelope (South)**

# ROY HILL OPERATIONS

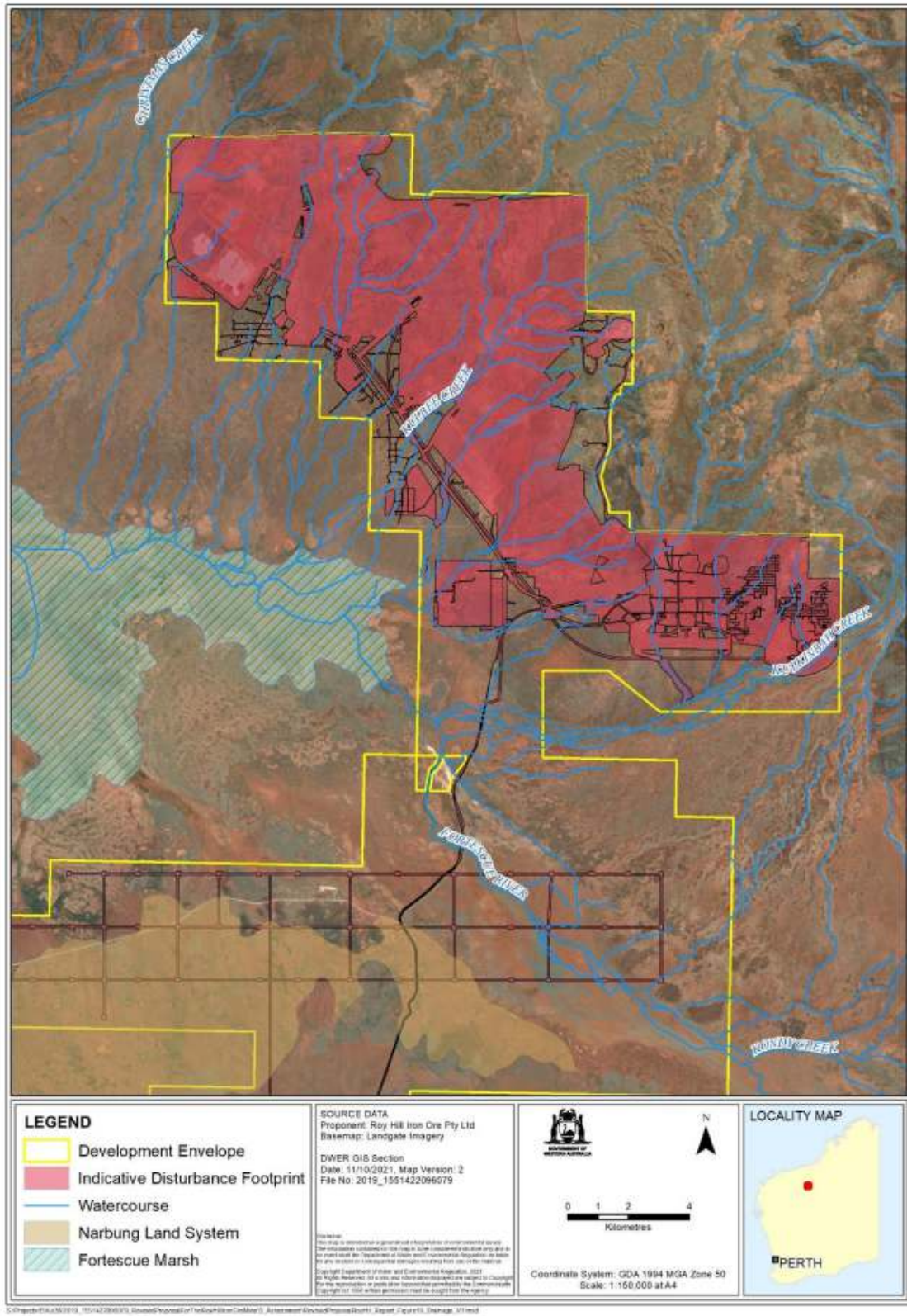


**Figure 2: Indicative borefield envelopes**

# ROY HILL OPERATIONS



**Figure 3: Indicative In-pit tailings storage facilities**



**Figure 4: Drainage line (watercourse) avoidance – Evaporation pond and recharge basins**

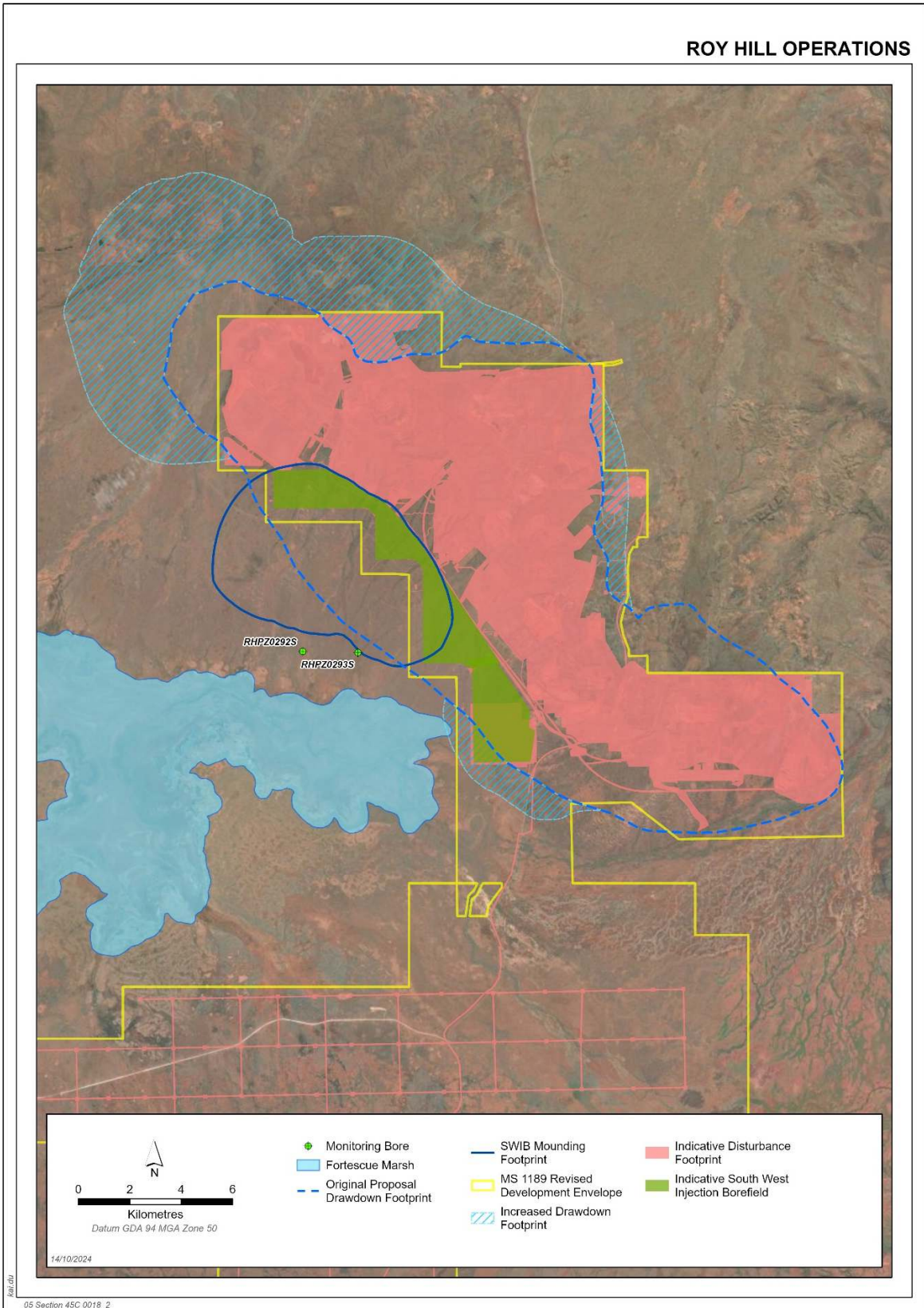


Figure 5: Regional monitoring bores RHPZ0292S and RHPZ0293S

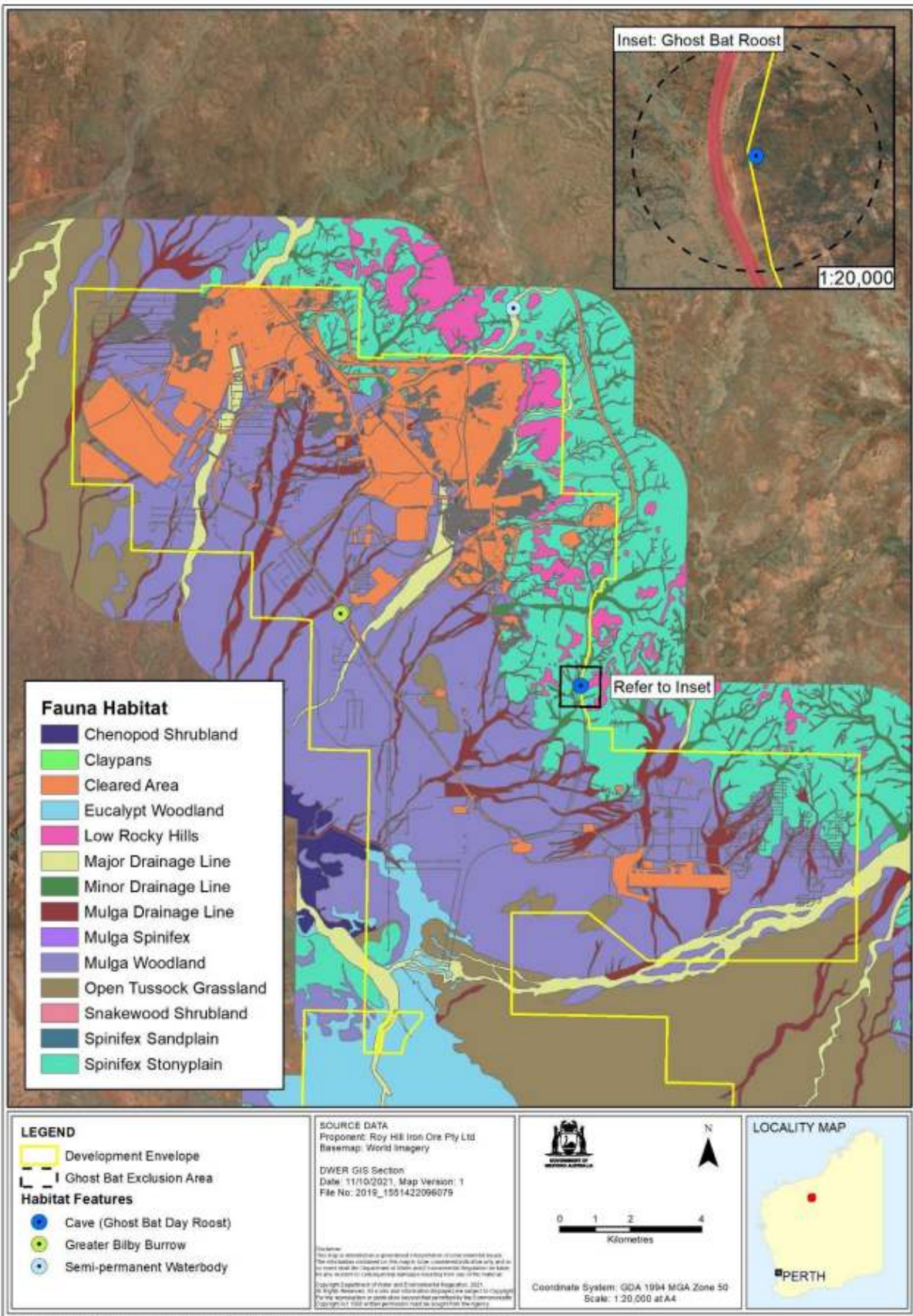


Figure 6(a): Fauna habitats (development envelope north)

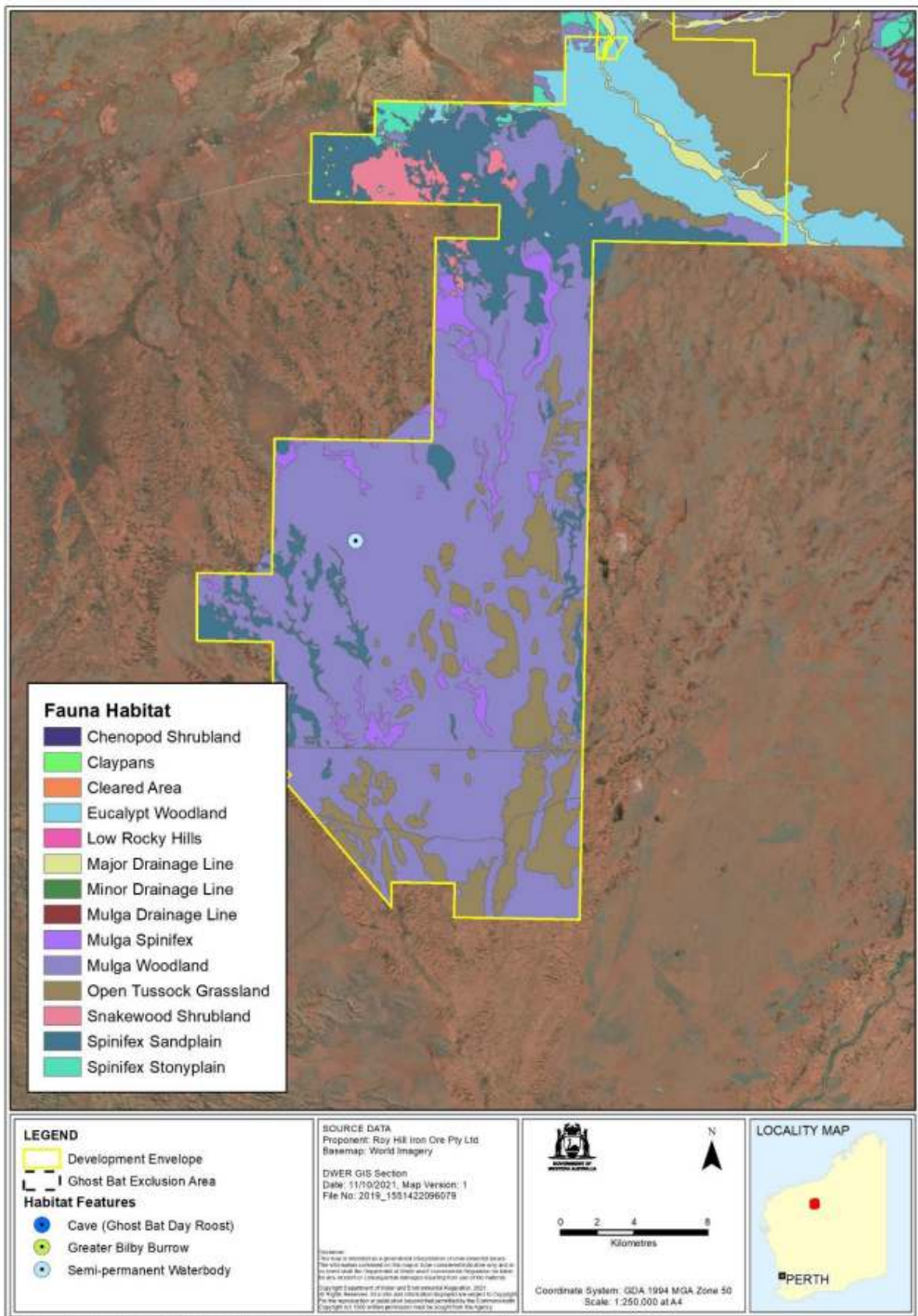
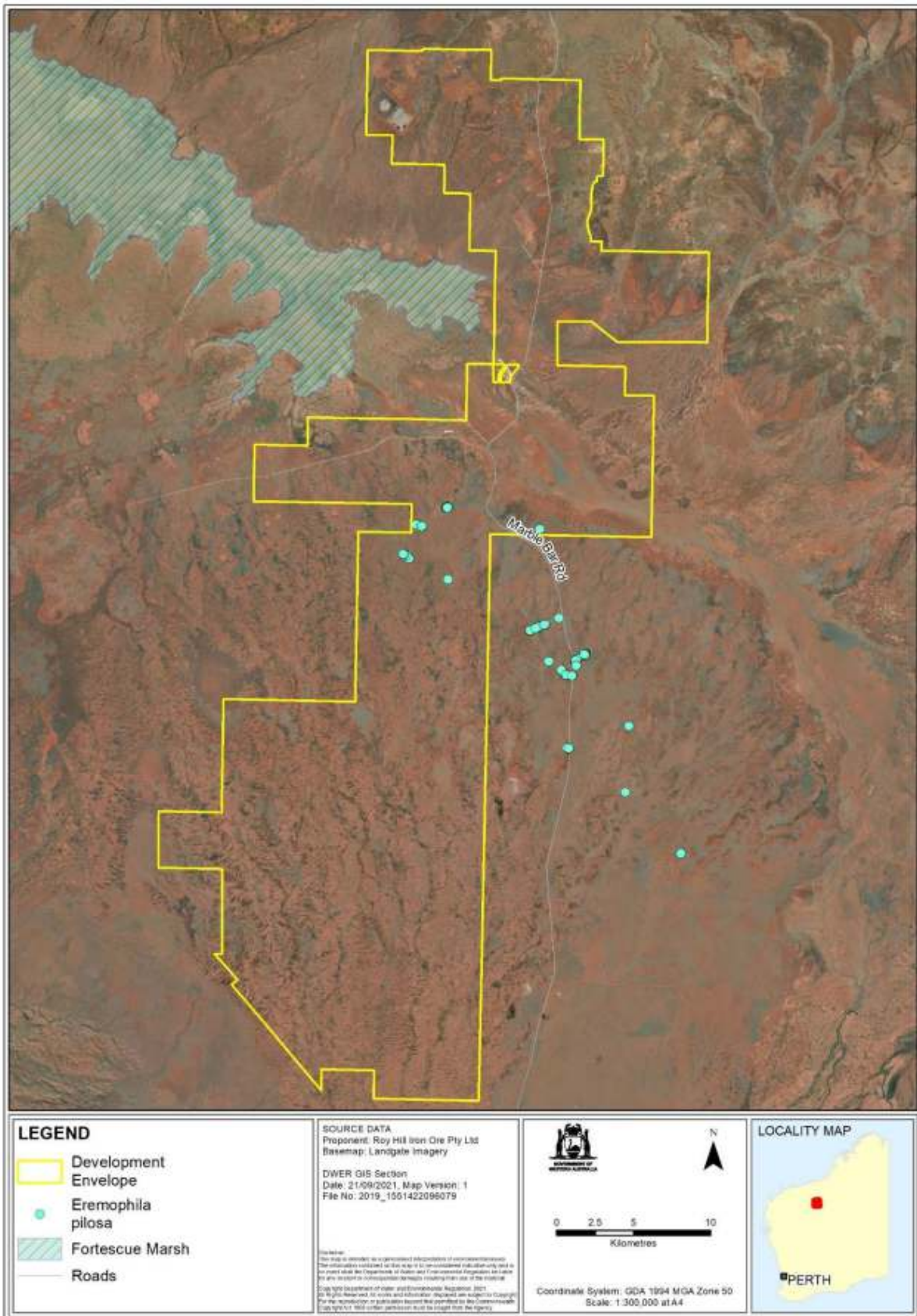


Figure 6(b): Fauna habitats (development envelope south)



**Figure 7: Local records extent - *Eremophila pilosa***