

Template

Proposal Content Document

Table 1: General proposal content description

Proposal title	Greenbushes Lithium Mine: Waste Rock Landforms, Salt Water Gully Dam and additional clearing for infrastructure.
Proponent name	Talison Lithium Australia Pty Ltd
Short description	Expansion of the existing Greenbushes lithium operations to incorporate the S2 WRL, S8 WRL, SWG Dam and additional mine infrastructure.

Table 2: Proposal content elements

Proposal element	Location/ description	Existing proposal extent, capacity or range	Referred proposal extent, capacity or range	Proposed amendments	Total proposal extent, capacity or range
Physical elements					
<p>Existing mine infrastructure, including:</p> <p>Waste rock landforms</p> <p>Water storage dams</p> <p>Open pits and haul roads</p> <p>Tailings storage facilities</p> <p>Ore stockpiles and ROM pad</p> <p>Crushing and processing plants</p> <p>Linear infrastructure corridors (mine access road, powerline, pipeline and road corridors).</p> <p>Explosives storage and handling infrastructure</p> <p>Workers' Village</p>	<p>Figures 1-1, 1-2, 1-3 and 1-4.</p>	<p>Clearing of no more than 350ha of native vegetation within a development envelope of 1,989 ha.</p>	<p>Clearing of no more than 512 ha of native vegetation and up to 29 ha of previous mine disturbance and rehabilitated areas within a DE of 2,826 ha</p>	<p>The originally referred DE has been corrected to 2,824 ha to align with the spatial data provided at referral.</p> <p>There is a reduction in clearing of native vegetation of 4 ha. The amendment results in:</p> <ul style="list-style-type: none"> • A decrease of previous mine disturbance and rehabilitation areas to be cleared to 28 ha. • A reduction of 33 ha in the overall DE 	<p>Clearing of no more than 508 ha of native vegetation and up to 59 ha of previous mine disturbance and rehabilitated areas within a DE of 2,791ha.</p>

Proposal element	Location/ description	Existing proposal extent, capacity or range	Referred proposal extent, capacity or range	Proposed amendments	Total proposal extent, capacity or range
Mine services area (existing mine infrastructure)	Figure 1-5 and 1-6.			Talison is increasing the clearing of previous mine disturbance and rehabilitation areas that relate to the MSA to ensure that MS1111 accurately captures all land clearing already completed, as well as future clearing required for the proposed expansion. This includes an increase of 31 ha in areas of previously disturbed by mining and rehabilitation activities	
Waste rock landforms (S2 & S8)	Figure1-7.			<p>The reduced size of SWG Dam enables a small increase in the footprint of the S8 WRL. S2 increases due to the removal of the mixed use area element. Changes to footprint include</p> <ul style="list-style-type: none"> • S2 WRL increases by 60.5 ha 	

Proposal element	Location/ description	Existing proposal extent, capacity or range	Referred proposal extent, capacity or range	Proposed amendments	Total proposal extent, capacity or range
				<ul style="list-style-type: none"> S8 WRL increases by 2 ha No change to overall disturbance footprint for this element 	
Saltwater gully dam	Figure 1-8.			Reduction of dam area to avoid heritage identified by Wagyl Kaip survey in November 2025. Reduction of 3 ha of native vegetation clearing and reduction 4 ha of previous mine disturbance and rehabilitation areas	
Southampton and Austins dams	Figures 1-3 and 1-9.			<p>2 ha reduction in clearing of native vegetation and 1 ha reduction in clearing of previously rehabilitated areas.</p> <p>Dam raise clearing reduces by 3 ha in total.</p> <p>11.75 ha reduction to the DE.</p>	

Proposal element	Location/ description	Existing proposal extent, capacity or range	Referred proposal extent, capacity or range	Proposed amendments	Total proposal extent, capacity or range
Water management infrastructure	Figure 1-4.			No change to footprint.	
Supporting infrastructure corridors	Figure 1-4.			No change to footprint.	
CGP4 Infrastructure	Figure 1-4.			No change to footprint. Reference to workshops and laydown have been removed. The overall disturbance footprint remains unchanged.	
Rehabilitation material stockpile (RMS) area	Figures 1-4 and 1-10.			1 ha increase in the clearing of native vegetation. Note: This figure excludes the clearing of plantation associated with the expansion of the RMS area.	
Mixed use area	N/A			Removal of this proposal element as it will be part of the S2 WRL. No change to clearing disturbance	
Cemetery	Figure 1-2 and 1-3.			4 ha reduction DE to excise the cemetery	

Proposal element	Location/ description	Existing proposal extent, capacity or range	Referred proposal extent, capacity or range	Proposed amendments	Total proposal extent, capacity or range
Mine lookout	Figure 1-2 and 1-3.			0.25 ha increase to DE to include lookout, no additional clearing required.	
Hester Brook buffer	Figure 1-3.			17.5 ha reduction in DE to maintain a 50m buffer along the length of Hester Brook registered heritage site	
Operational Elements					
Damming and abstraction of surface water for mine site water supply.	Figures 1-1, 1-2, 1-4 and 1-8.	N/A	Abstraction of up to 1 GL/a from Saltwater Gully Dam.	No change.	Abstraction of up to 1 GL/a from Saltwater Gully Dam.
Waste Rock Landform Construction		Waste Rock Landform height of 330 m AHD and area of 355 ha.	WRL height of 330 m AHD and area of 727 ha (includes existing Floyds WRL, S2 WRL and S8 WRL).	Increase of WRL footprint by 63 ha, including removal of mixed use element and larger S8 footprint	WRL height of 330 m AHD and area of 790 ha (includes existing Floyds WRL, S2 WRL and S8 WRL).
Processing Throughput		Processing capacity up to 9.5 Mtpa ore.	Processing capacity of 9.5 Mtpa ore and up to 2.1 Mtpa recovered tailings.	No Change	Processing capacity of 9.5 Mtpa ore and up to 2.1 Mtpa recovered tailings.
Tailings Deposition		Up to 9.5Mtpa	Up to 11.6 Mtpa	No Change	Up to 11.6 Mtpa

Proposal elements with greenhouse gas emissions		
Operation elements: Peak annual average		
Scope 1	Maximum Capacity annual GHG Emissions for 2028: 193,075 tCO2-e	
Scope 2	Maximum Capacity annual Electricity use: 62,060 tCO2-e	
Scope 3	Peak emissions (expected) 2040: 1,719,106 tCO2-e	
Operation elements: Annual average life of mine		
Scope 1	Fuel and Land Clearing: 166,382 tCO2-e per year.	
Scope 2	Electricity use: 60,134 tCO2-e per year.	
Scope 3	Battery manufacture: 1,423,928 tCO2-e per year.	
Total (based on annual average Scope 1 and Scope 2) – 25-year life of mine		
Existing Operation	Proposal	Combined Total
5,368,852 tCO2-e of Scope 1 and Scope 2 emissions over the life of mine.	Increase in Scope 1 and Scope 2 emissions by 520,549 tCO2-e over the life of mine.	5,889,401 tCO2-e of Scope 1 and Scope 2 emissions over the life of mine.

Rehabilitation and Closure
Progressive rehabilitation will be undertaken over the life of mine. Areas disturbed through implementation of this proposal will be designed to be safe and non-polluting at all stages of

construction, and final landform design will promote establishment of native vegetation to support conservation significant species.		
Other elements which affect extent of effects on the environment		
Proposal Time*	Maximum project life	To 2049
	Construction phase	~1 Year
	Operations phase	~21 Years
	Decommissioning phase	~2 Years

** Proponents should only provide realistic timeframes to avoid unnecessary change to proposal applications at referral (section 38C), assessment (section 43A) or post assessment (section 45C).*

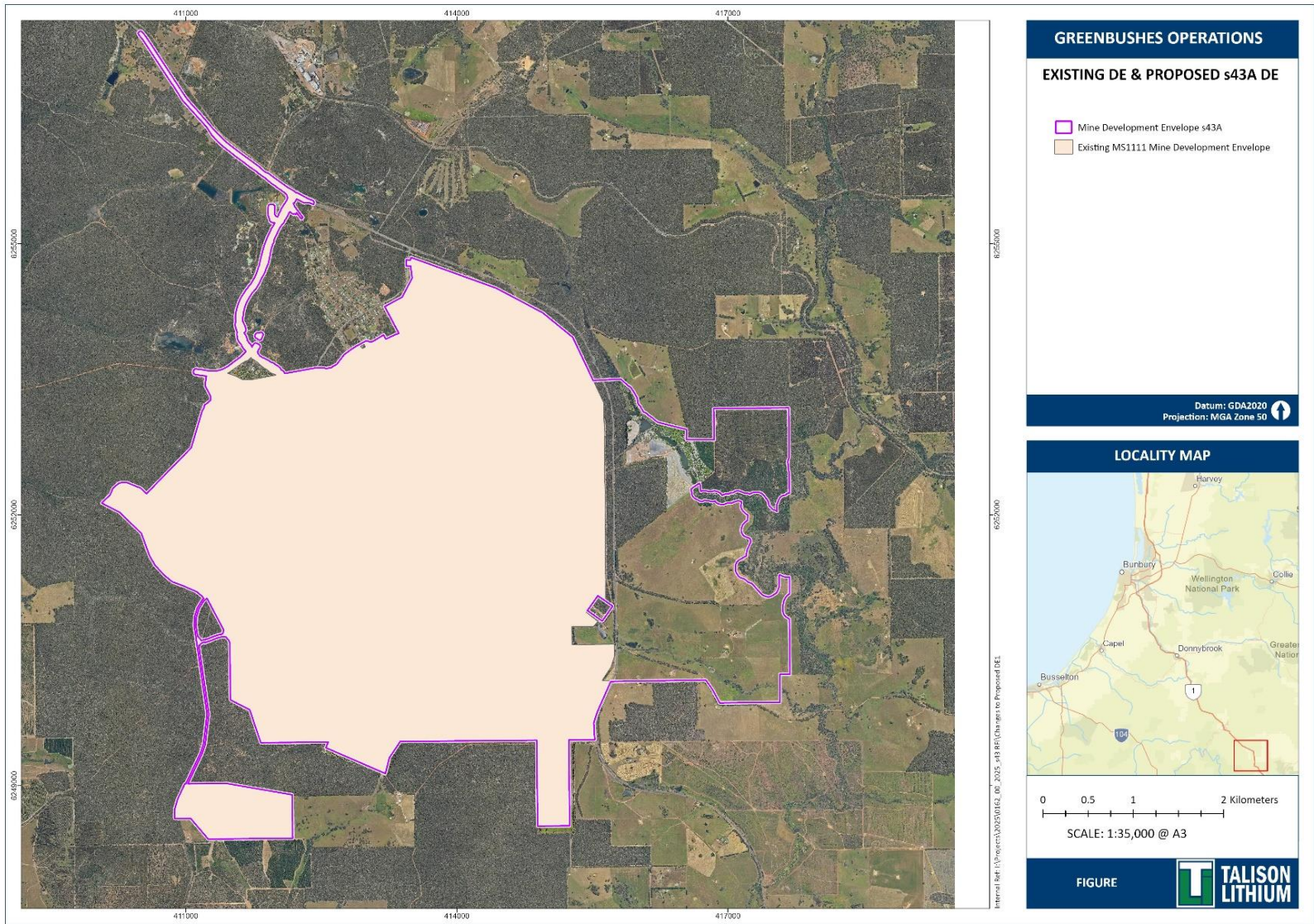


Figure 1-1: Existing and Proposed MDE

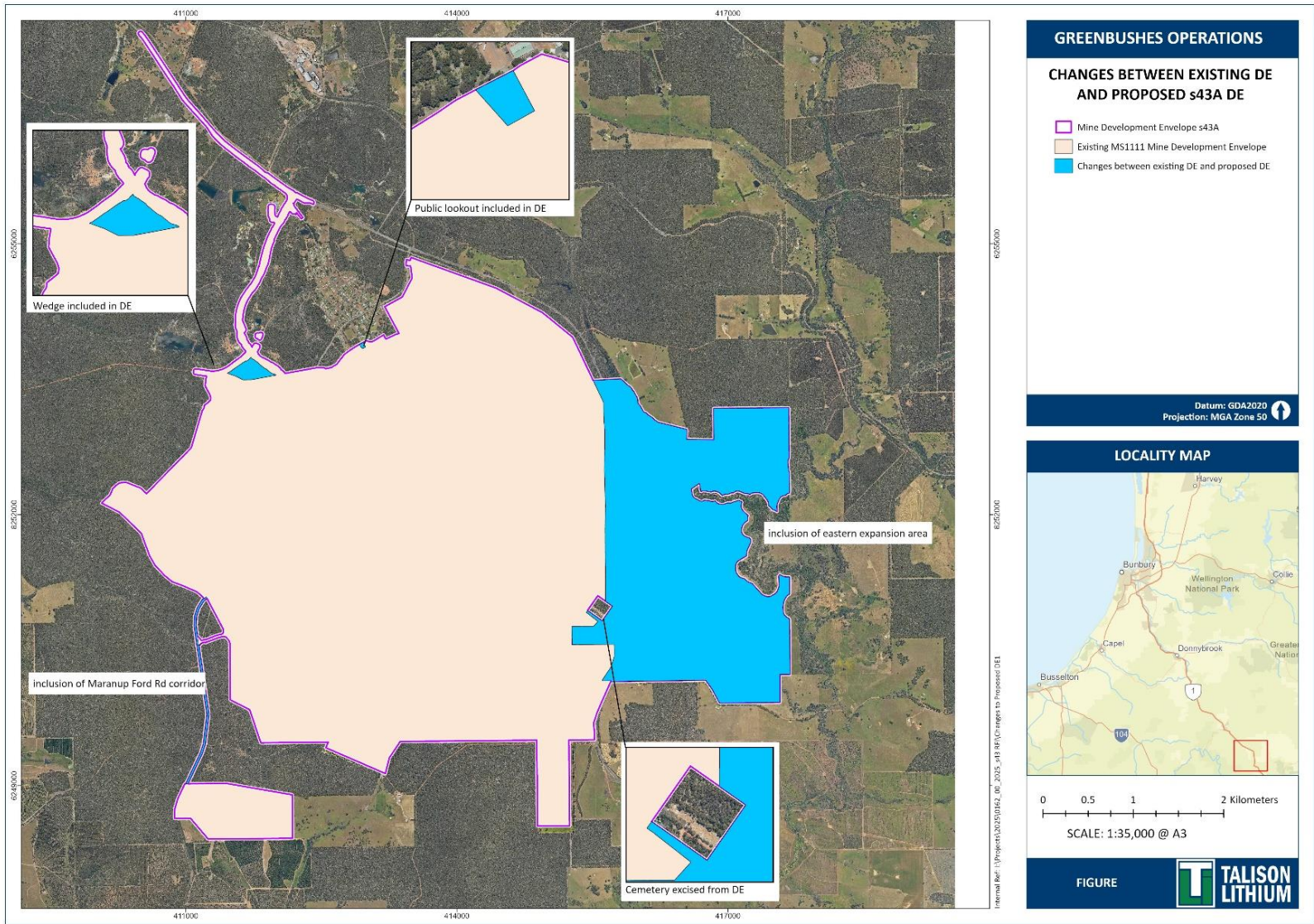


Figure 1-2: Changes between existing DE and Proposed s43A DE

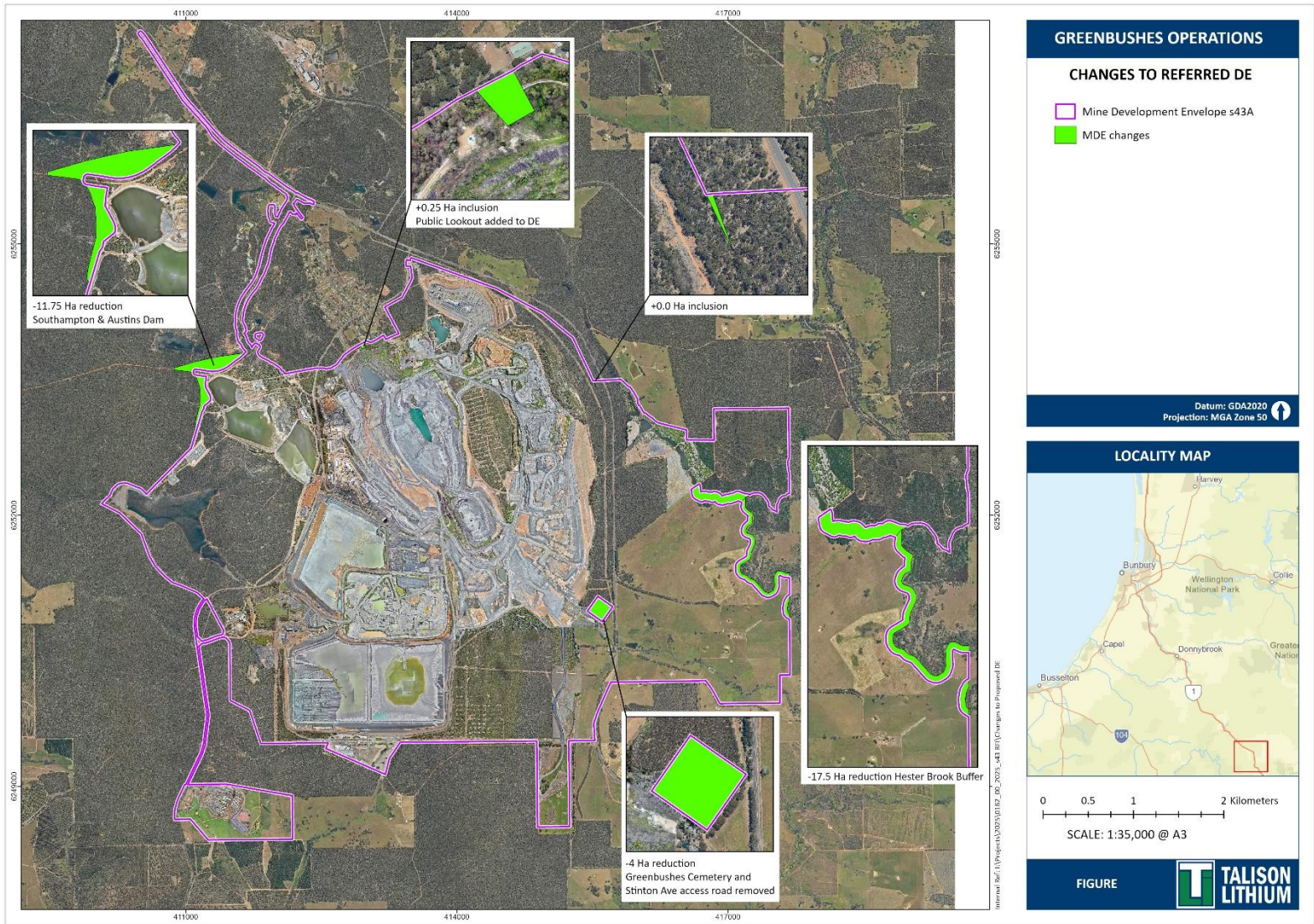


Figure 1-3 Changes to referred DE

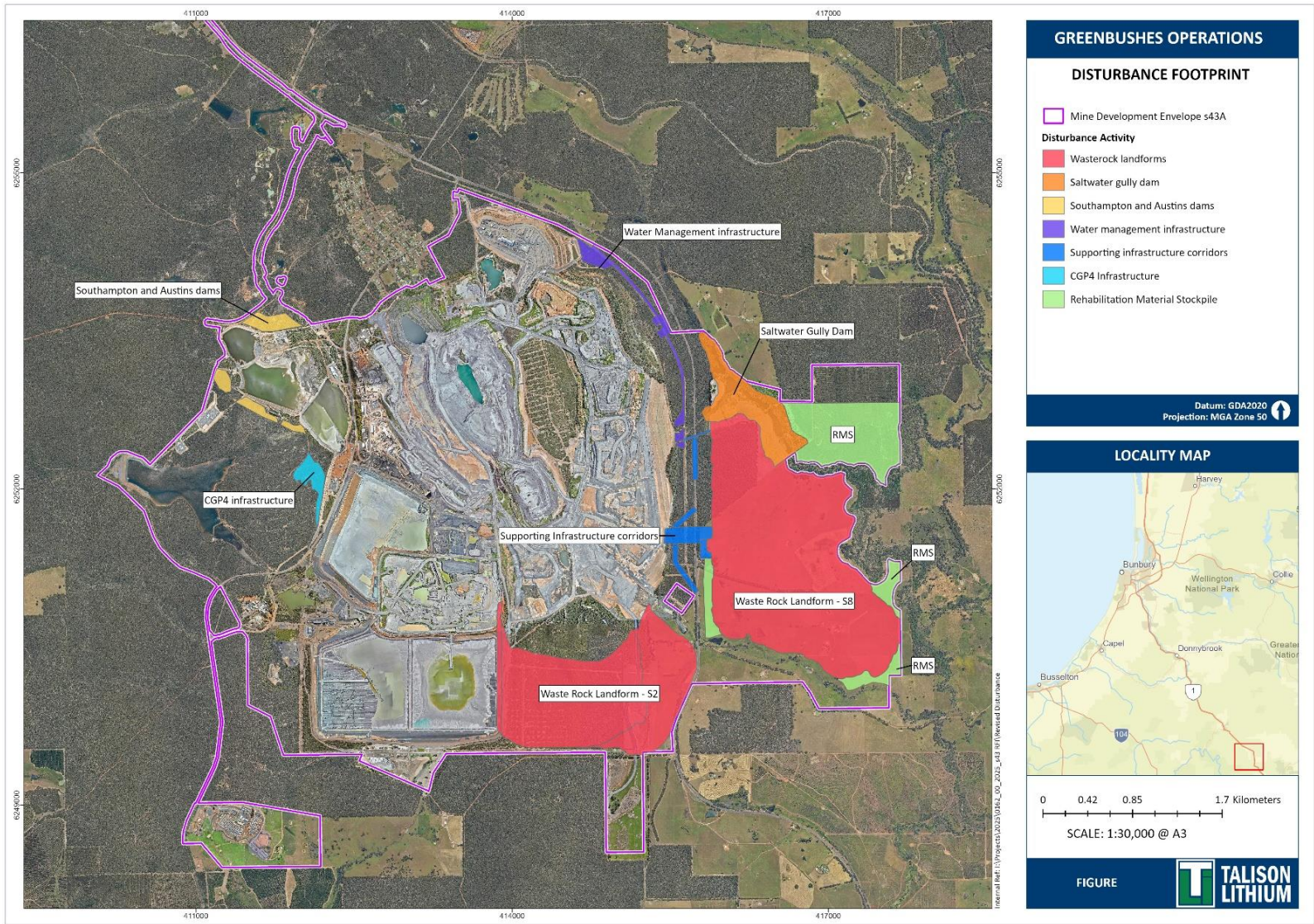


Figure 1-4: Proposed Disturbance Footprint

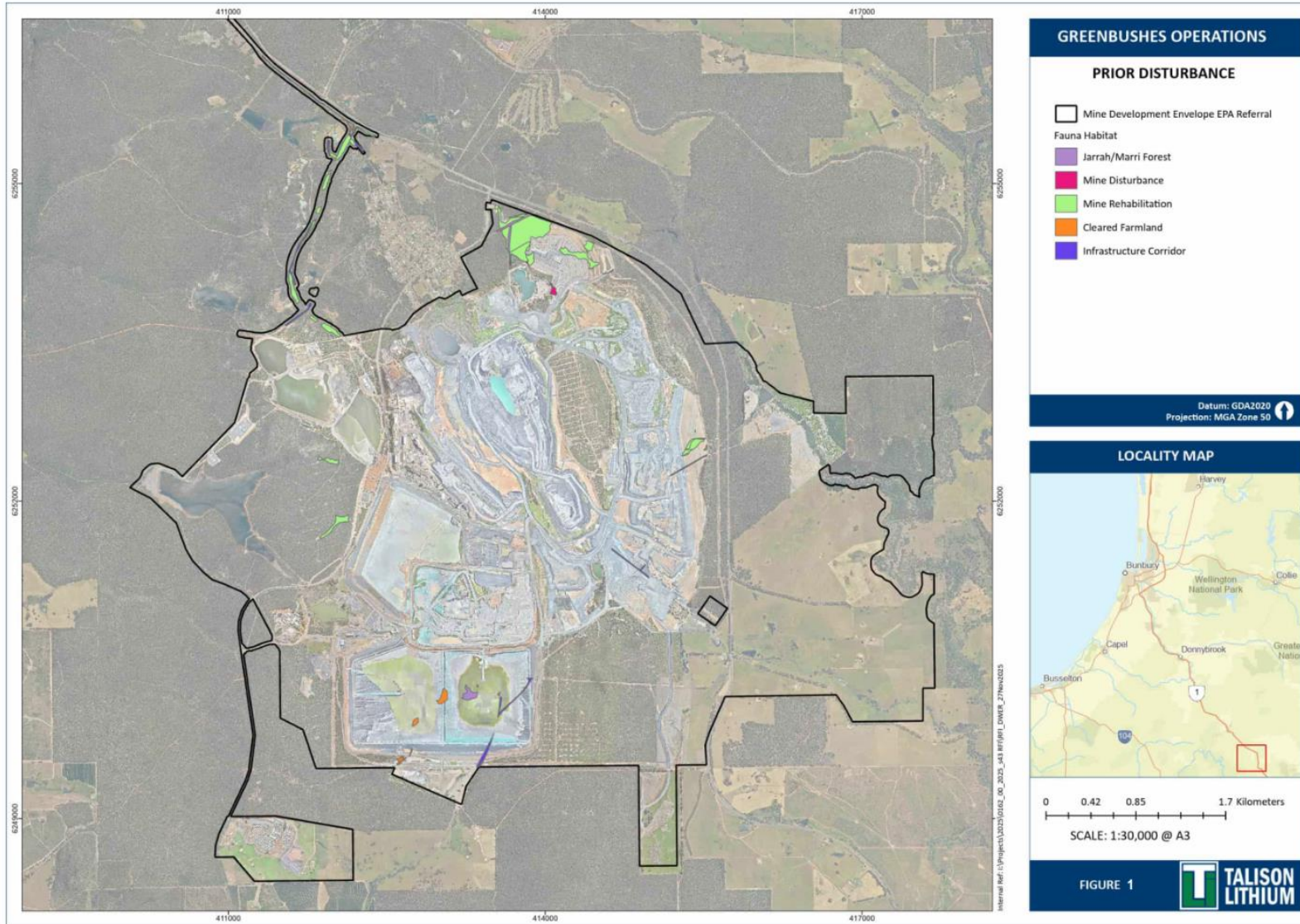


Figure 1-5: Prior disturbance of 31ha of Previous Mine Disturbance and Rehabilitation Areas

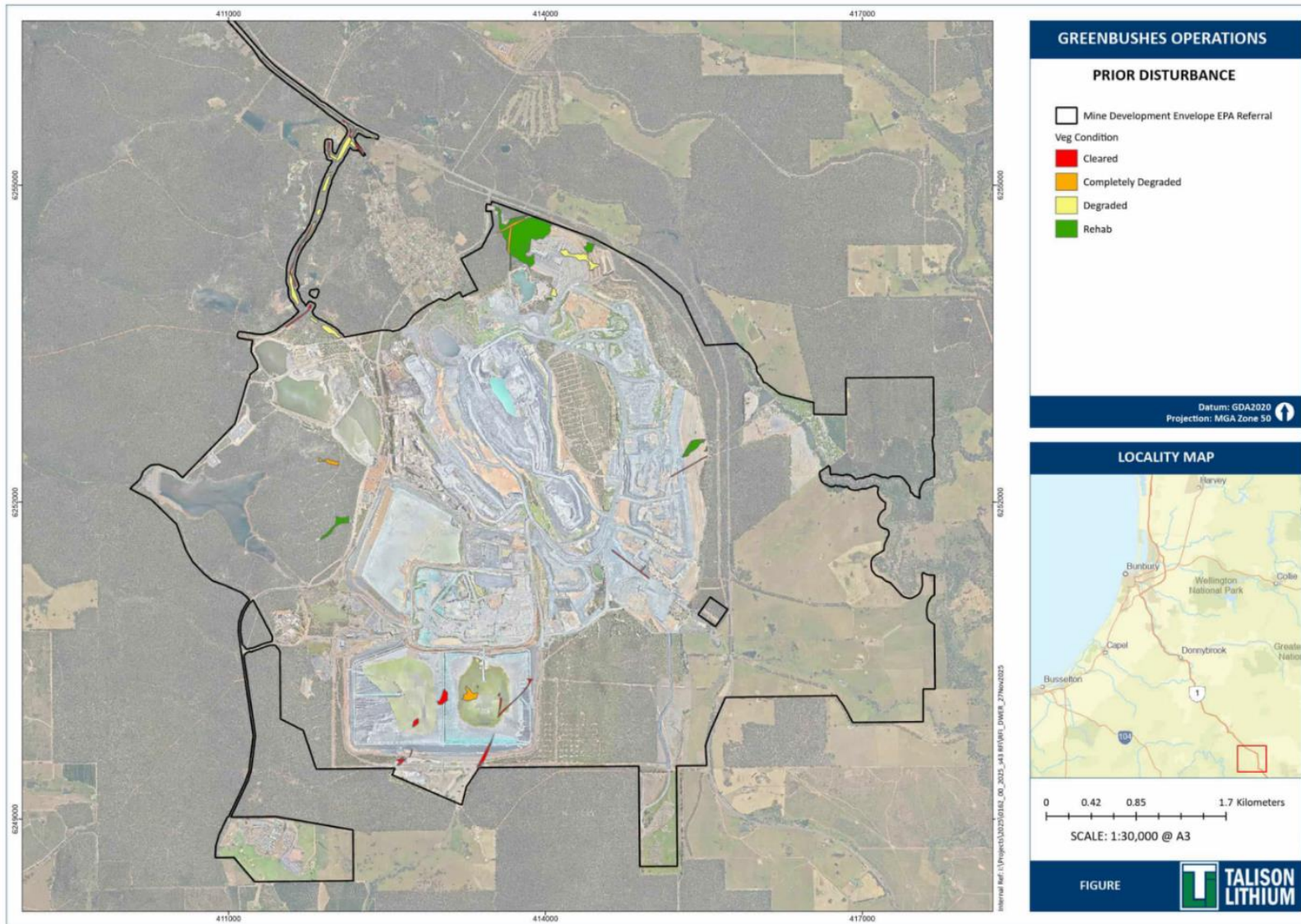


Figure 1-6: Vegetation condition of prior disturbed of 31ha of Previous Mine Disturbance and Rehabilitation Areas

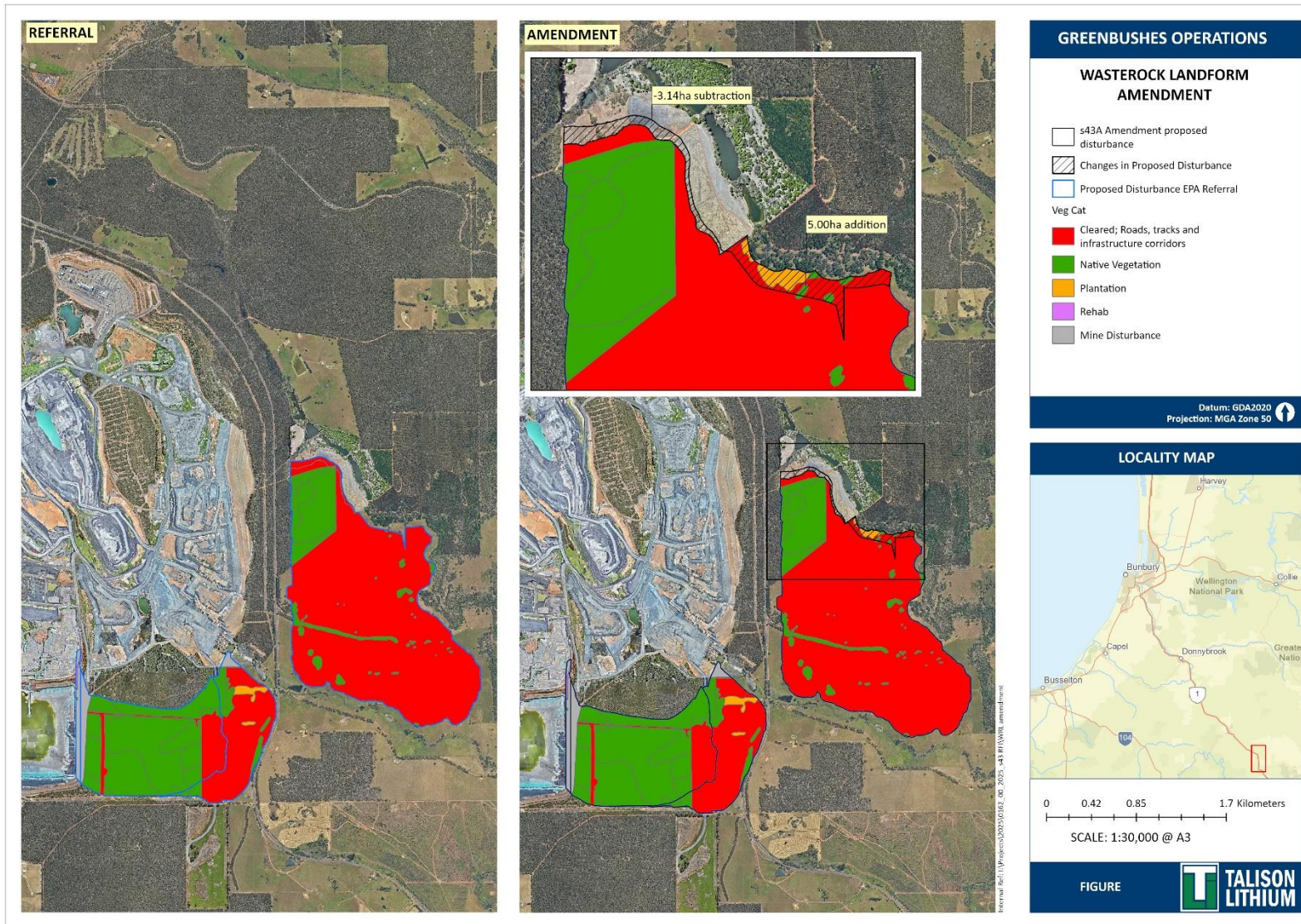


Figure 1-7: Proposed Changes to WRL S2 and S8

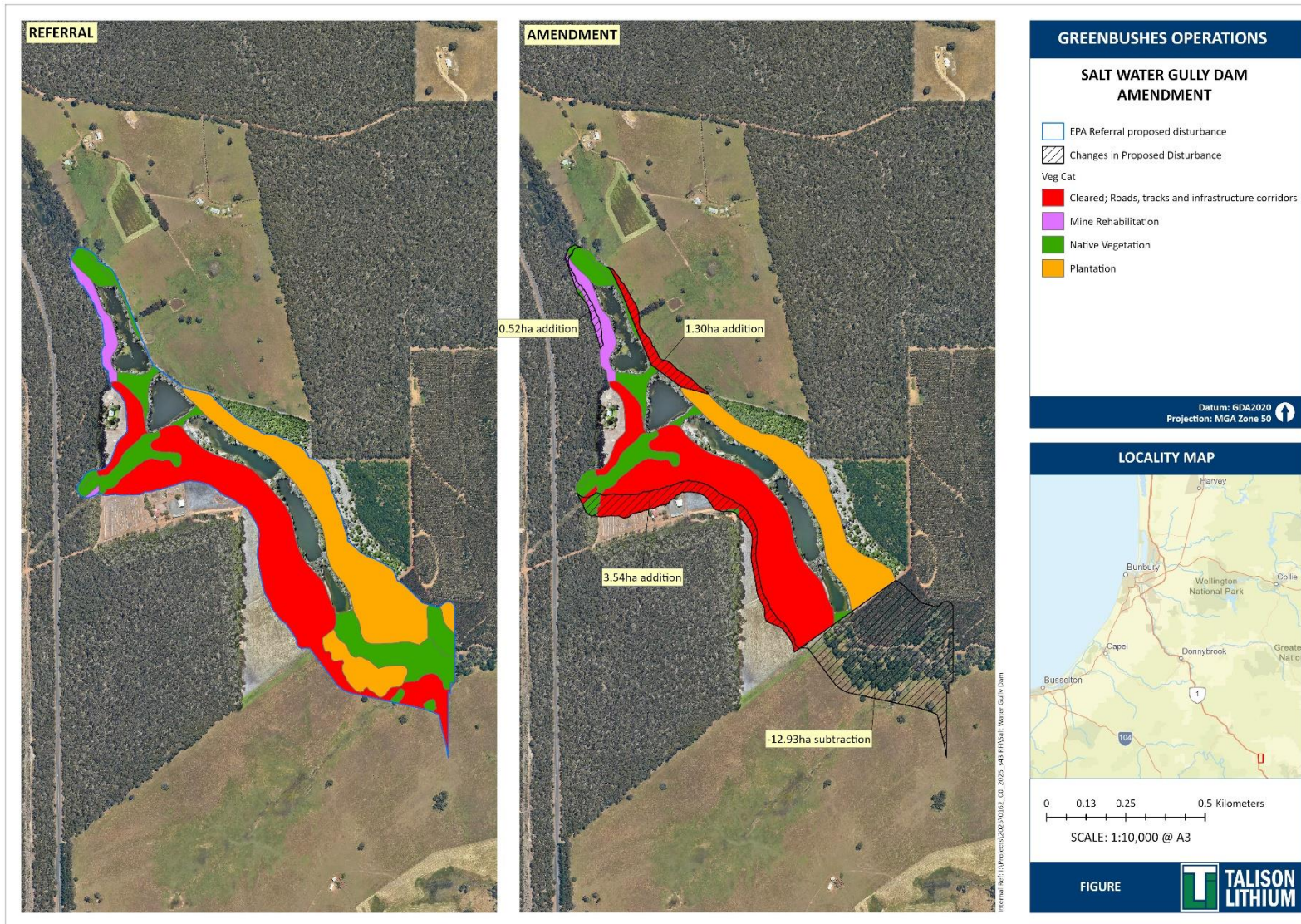


Figure 1-8: Salt Water Gully Dam Changes

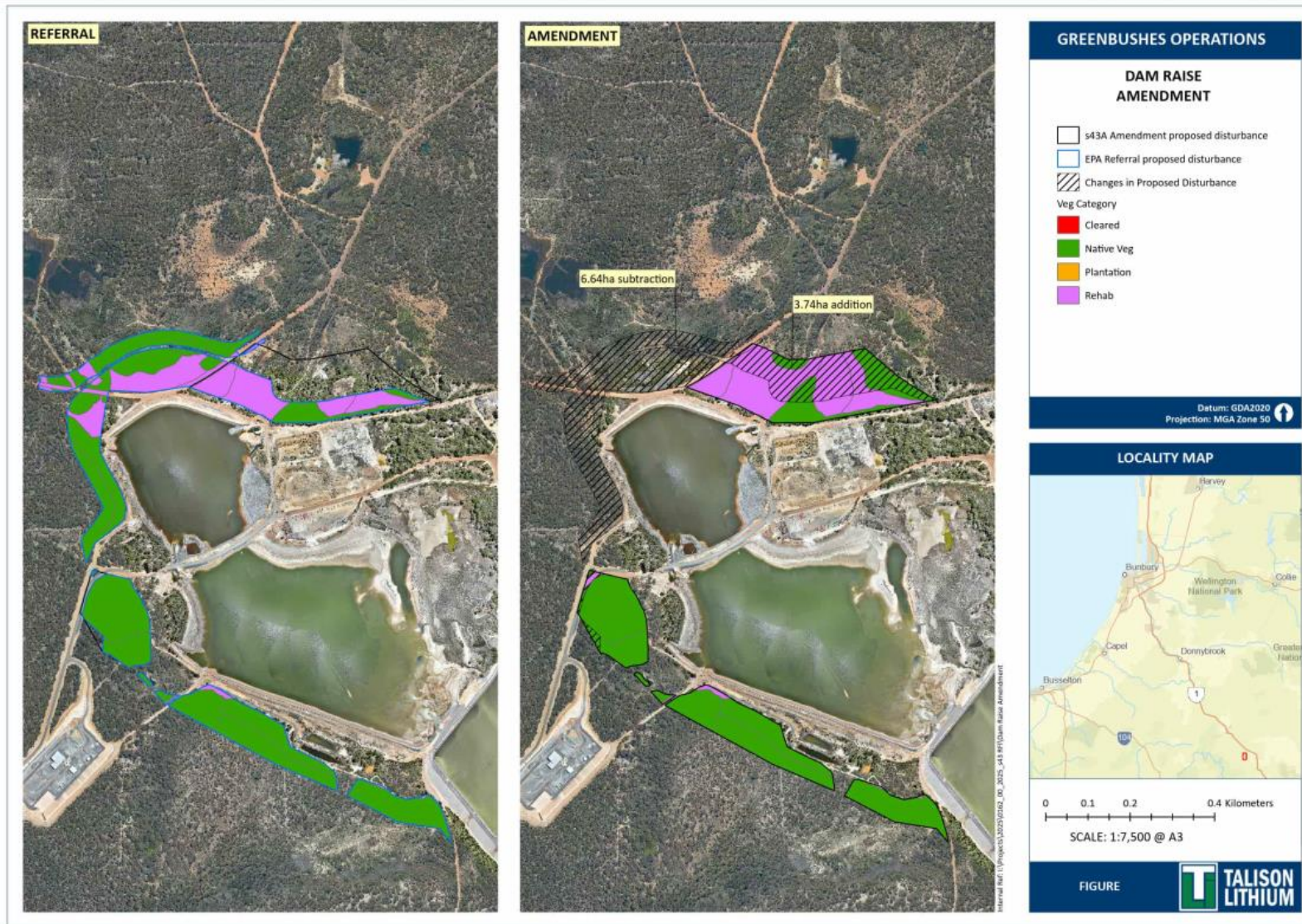


Figure 1-9: Dam Raise Amendment

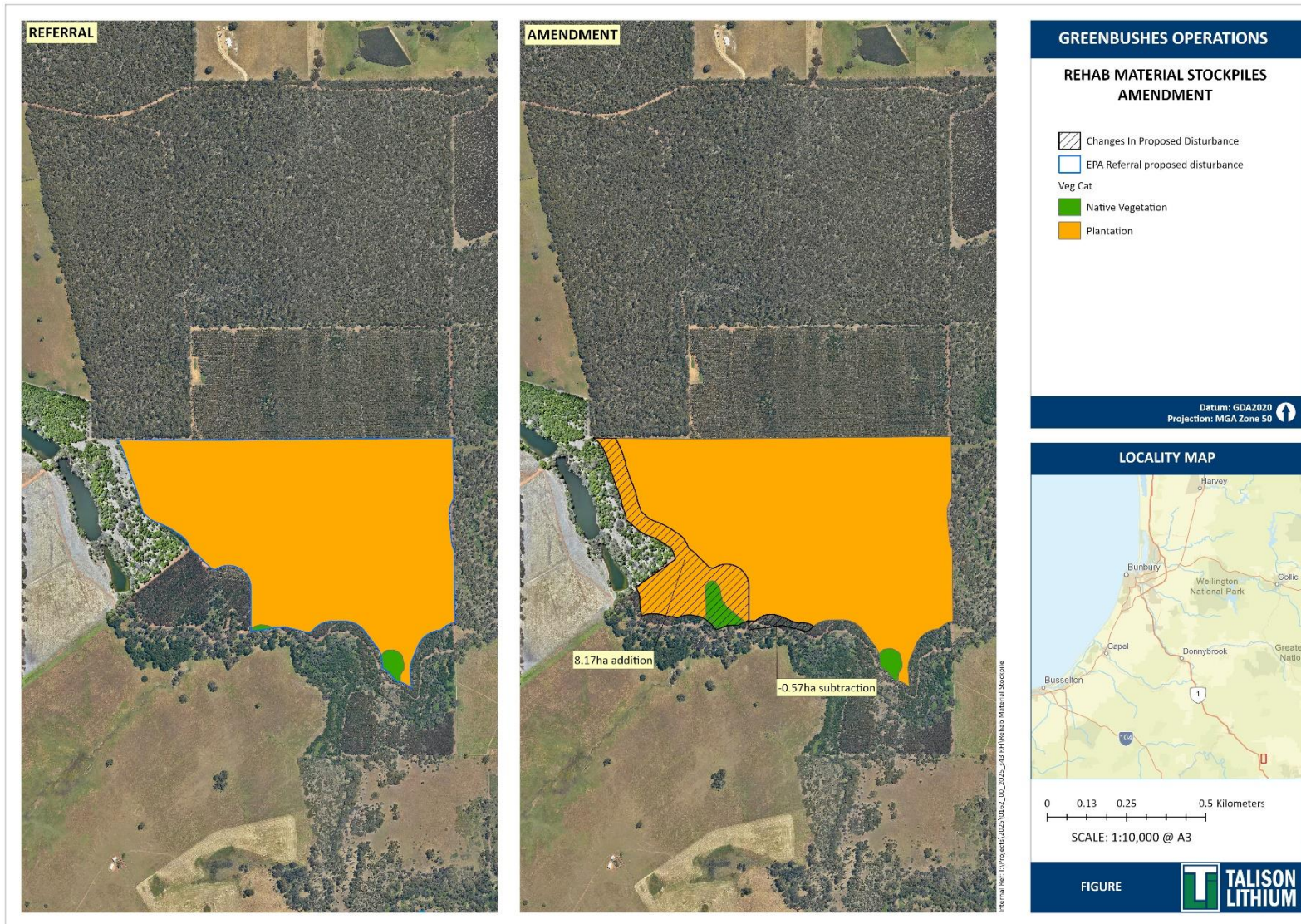


Figure 1-10 Rehab Material Stockpiles Amendment