

# Pilbara Energy Project Expansion

## Amended Proposal Content Document

**Table 1:** General proposal content description

<b>Proposal title</b>	<b>Pilbara Energy Project Expansion.</b>
<b>Proponent name</b>	APA DEWAP Pty Ltd.
<b>Short description</b>	The proposal includes the expansion of the Power Station from 140 MW to 200 MW nominal total installed capacity and approximately 400 km of high-voltage power transmission line from Port Hedland to Newman.

**Table 2:** Proposal content elements

<b>Proposal element</b>	<b>Location / description</b>	<b>Maximum extent, capacity or range in the Referral Supporting Document, PEP CER, and MS 333.</b>	<b>Amended maximum extent, capacity or range</b>
<b>Physical elements</b>			
Gas turbine power station	Figure 1 and Figure 2.	Not specified in the Referral Supporting Document or MS 333, however, the PEP CER states: The overall facility will encompass an area of approximately 350 m x 450 m. This equals an area of about 15.75 ha.	<b>Power Station</b> with disturbance of no more than <b>15.75 ha</b> within a <b>2,549 ha</b> development envelope.
Transmission Line	Figure 1 and Figure 2.	Not specified in the Referral Supporting Document or MS 333, however, the PEP CER states: 400 km 220 kV transmission line, 25 – 35 m high with a span between towers of 300 – 400 m and a 60 m easement from Port Hedland to Newman and approximately 450 ha of disturbance.	Disturbance of no more than <b>450 ha</b> within a <b>2,549 ha</b> development envelope.
<b>Operational elements</b>			
Gas turbine power station	Figure 1 and Figure 2.	Not specified in MS 333. The PEP CER states: 140 MW nominal total installed capacity. Assumed to be based on the 35 MW nominal installed capacity of the three existing gas turbines and a fourth 35 MW gas turbine that was previously approved as part of the PEP, but not installed. The Referral Supporting Document specifies the installation of a 60 MW natural gas fuelled reciprocating engine generating set and supporting infrastructure.	<b>Power Station</b> with <b>200 MW</b> nominal total installed capacity.
Water Supply	N/A	Not specified in the Referral Supporting Document or MS 333, however the PEP	Water supply sourced from Port Hedland mains water supply.

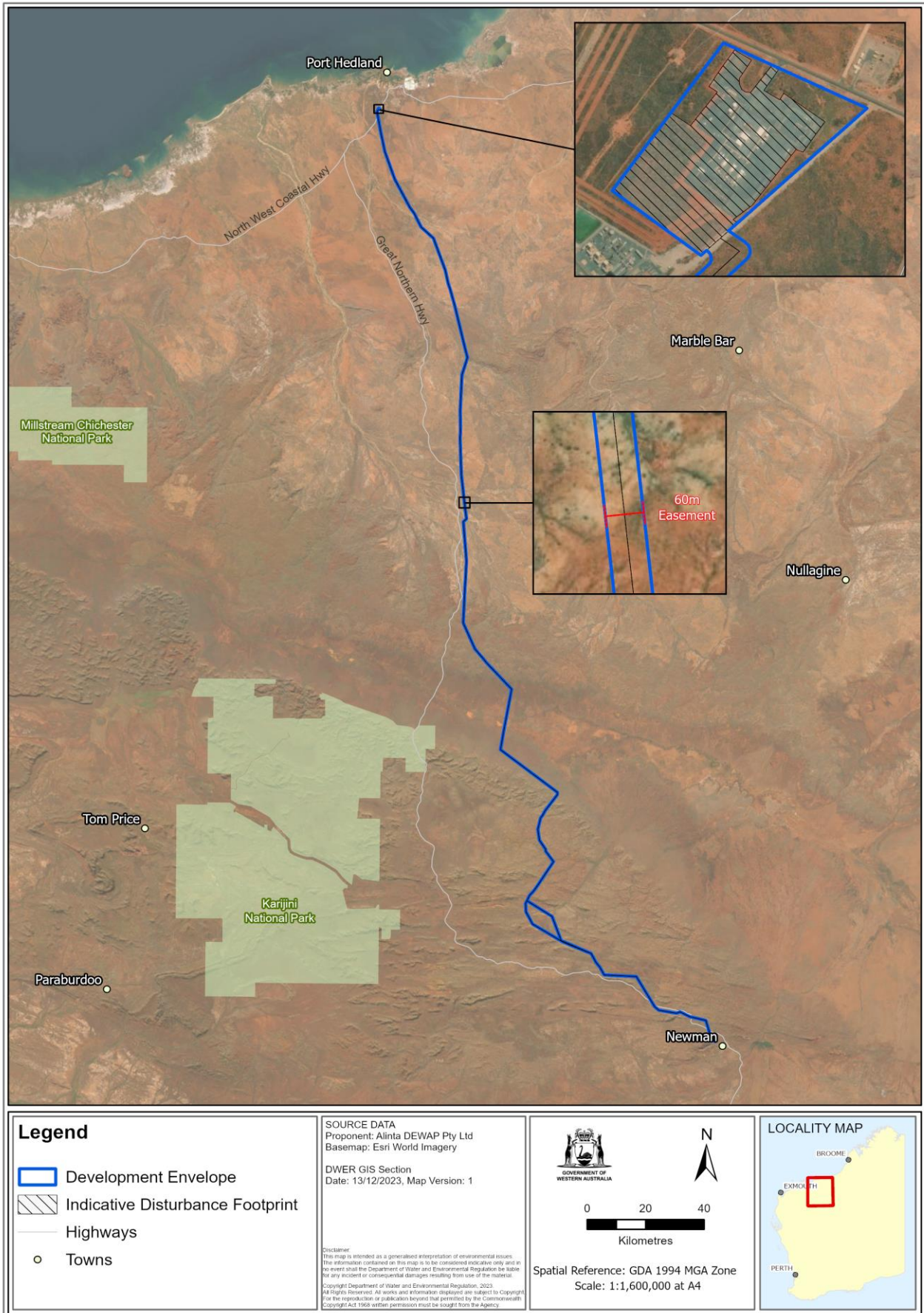
Proposal element	Location / description	Maximum extent, capacity or range in the Referral Supporting Document, PEP CER, and MS 333.	Amended maximum extent, capacity or range
		CER states: Sourced from Port Hedland mains water supply.	
<b>Proposal elements with greenhouse gas emissions</b>			
<b>Construction elements</b>			
Scope 1	N/A	Not specified in the PEP CER, MS 333, or the Referral Supporting Document.	For the Power Station and the Transmission Line estimated to be less than <b>5,000 tonnes of CO<sub>2</sub>-e</b> (emissions from small amounts of diesel fuel used for mobile construction equipment).  Emissions associated with vegetation clearing for construction are estimated at <b>53,561 tonnes of CO<sub>2</sub>-e</b> .
Scope 2	N/A	Not specified in the PEP CER, MS 333, or the Referral Supporting Document.	<b>Zero</b> scope 2 emissions.
Scope 3	N/A	Not specified in the PEP CER, MS 333, or the Referral Supporting Document.	Scope 3 emissions <b>unlikely to be significant</b> .
<b>Operation elements</b>			
Scope 1	N/A	Not specified in the PEP CER or MS 333.  The Referral Supporting Document specifies an additional 249,827 tonnes of CO <sub>2</sub> -e per annum produced from the 60 MW of natural gas fuelled reciprocating engines.	Total emissions of <b>1,084,019 tonnes of CO<sub>2</sub>-e per annum</b> from the Power Station.  Emissions from the Transmission Line estimated to be less than <b>50 tonnes of CO<sub>2</sub>-e per annum</b> (emissions from small amounts of diesel fuel used for mobile maintenance equipment).
Scope 2	N/A	Not specified in the PEP CER, MS 333, or the Referral Supporting Document.	<b>Zero</b> scope 2 emissions.
Scope 3	N/A	Not specified in the PEP CER, MS 333, or the Referral Supporting Document.	Total emissions from the Power Station of about <b>84,147 tonnes of CO<sub>2</sub>-e per annum</b> .  Transmission Line scope 3 emissions <b>unlikely to be significant</b> .
<b>Rehabilitation</b>			
N/A	N/A	Not included in the Referral Supporting Document. The PEP CER indicates that all	All areas disturbed during construction that are no longer

OFFICIAL

Proposal element	Location / description	Maximum extent, capacity or range in the Referral Supporting Document, PEP CER, and MS 333.	Amended maximum extent, capacity or range
		areas disturbed during construction that are no longer required for the operation phase will be rehabilitated.	required for the operation phase will be rehabilitated.
<b>Commissioning</b>			
N/A	N/A	Not included in the Referral Supporting Document. The PEP CER indicates that the gas pipeline will be hydrostatically pressure tested. Commissioning of the gas turbine power station is not specified in the PEP CER or MS 333.	<b>Commissioning of the approved fourth gas turbine and/or the natural gas fuelled reciprocating engines.</b>
<b>Decommissioning</b>			
N/A	N/A	Not specified in the PEP CER, MS 333, or the Referral Supporting Document.	<b>Removal of all above surface infrastructure after cessation of operation.</b>
<b>Timing elements</b>			
Maximum project life	N/A	Not specified in the PEP CER, MS 333, or the Referral Supporting Document.	<b>55 years.</b>
Construction phase		Not specified in the Referral Supporting Document or MS 333. The PEP CER indicates: - Power Station: 18 months. - Transmission Line: 2 years. - Gas pipeline: 5 months.	<b>3 years.</b>
Operations phase		Not specified in the PEP CER, MS 333, or the Referral Supporting Document.	<b>50 years.</b>
Decommissioning phase		Not specified in the PEP CER, MS 333, or the Referral Supporting Document.	<b>2 years.</b>

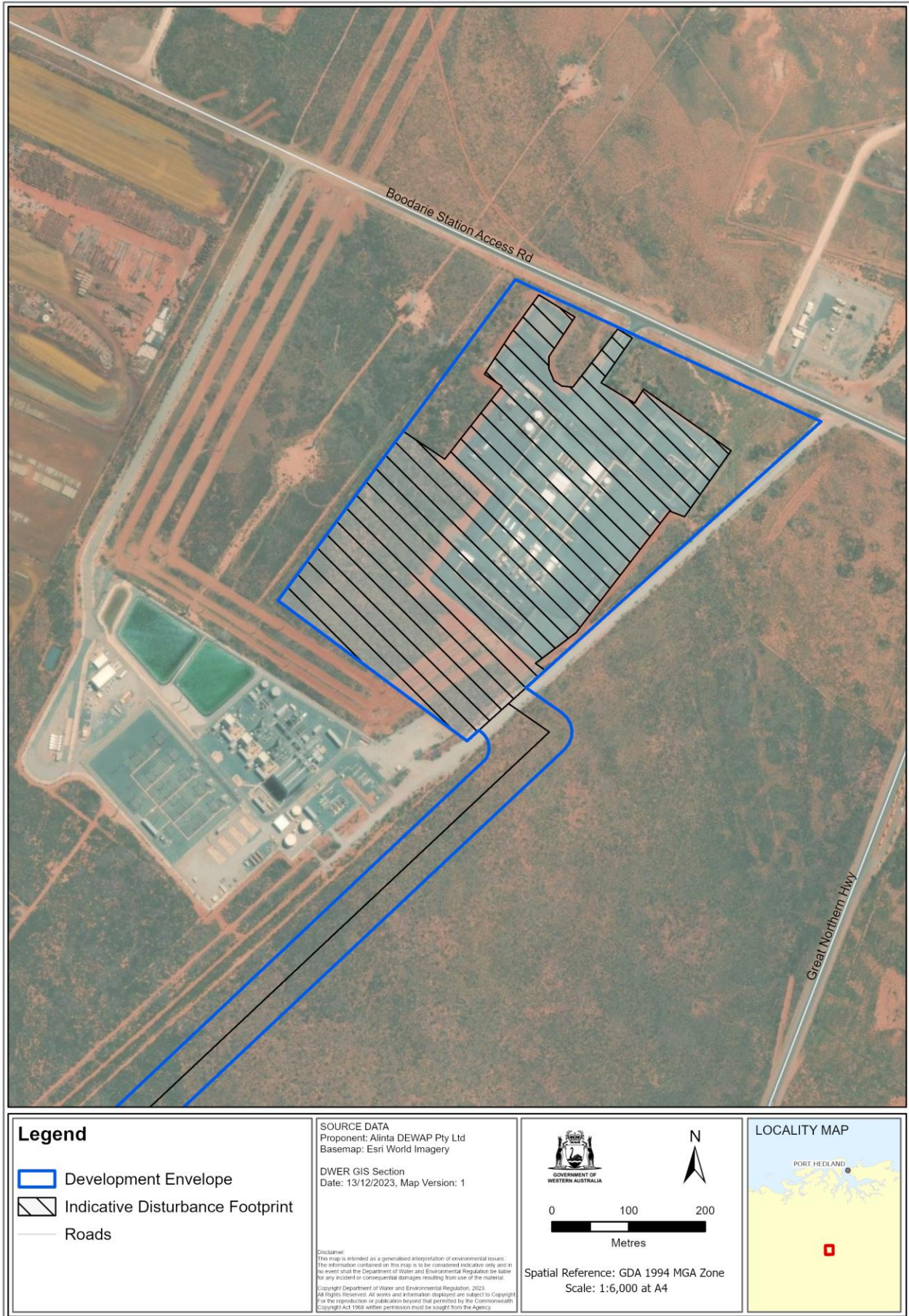
**Units and abbreviations**

CER	Consultative Environmental Review
CO <sub>2</sub> -e	carbon dioxide equivalent
DEMIRS	Department of Energy, Mines, Industry Regulation and Safety
ha	hectares
km	kilometres
MW	megawatts
PEP	Pilbara Energy Project



**Figure 1: Project location, development envelope, and indicative disturbance footprint**





Path: S:\Projects\EIA\s38\2020\_DWERDT346024\_PortHedlandPowerStationExpansion\3\_Assessment\ArcGIS\_Pro\2020\_DWERDT346024\_PortHedlandPowerStationExpansion\2020\_DWERDT346024\_PortHedlandPowerStationExpansion.aprx

**Figure 2: Proposal development envelope and indicative disturbance footprint**