



## Appendix 1

### Figures

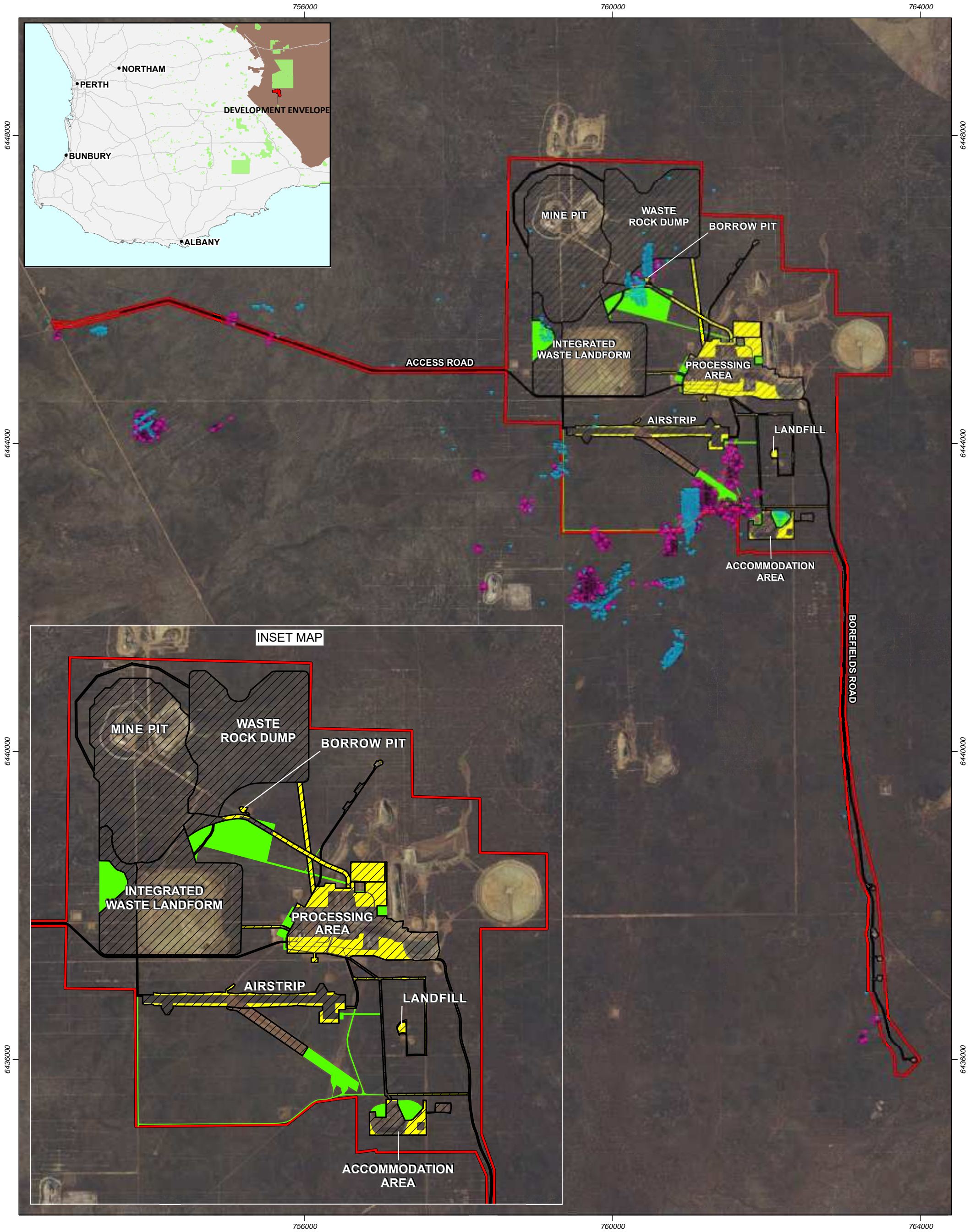
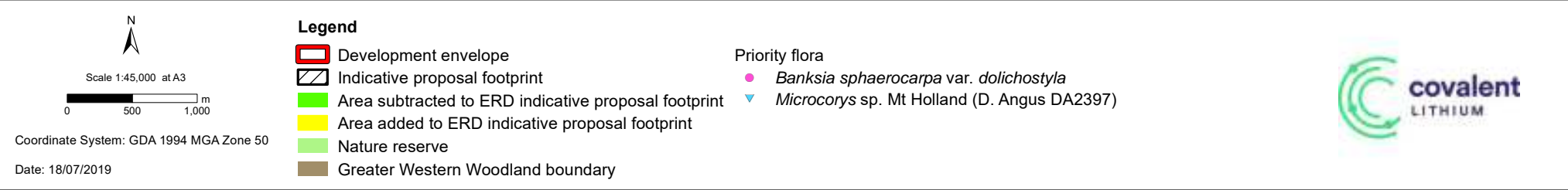


Figure 1: Proposed layout changes





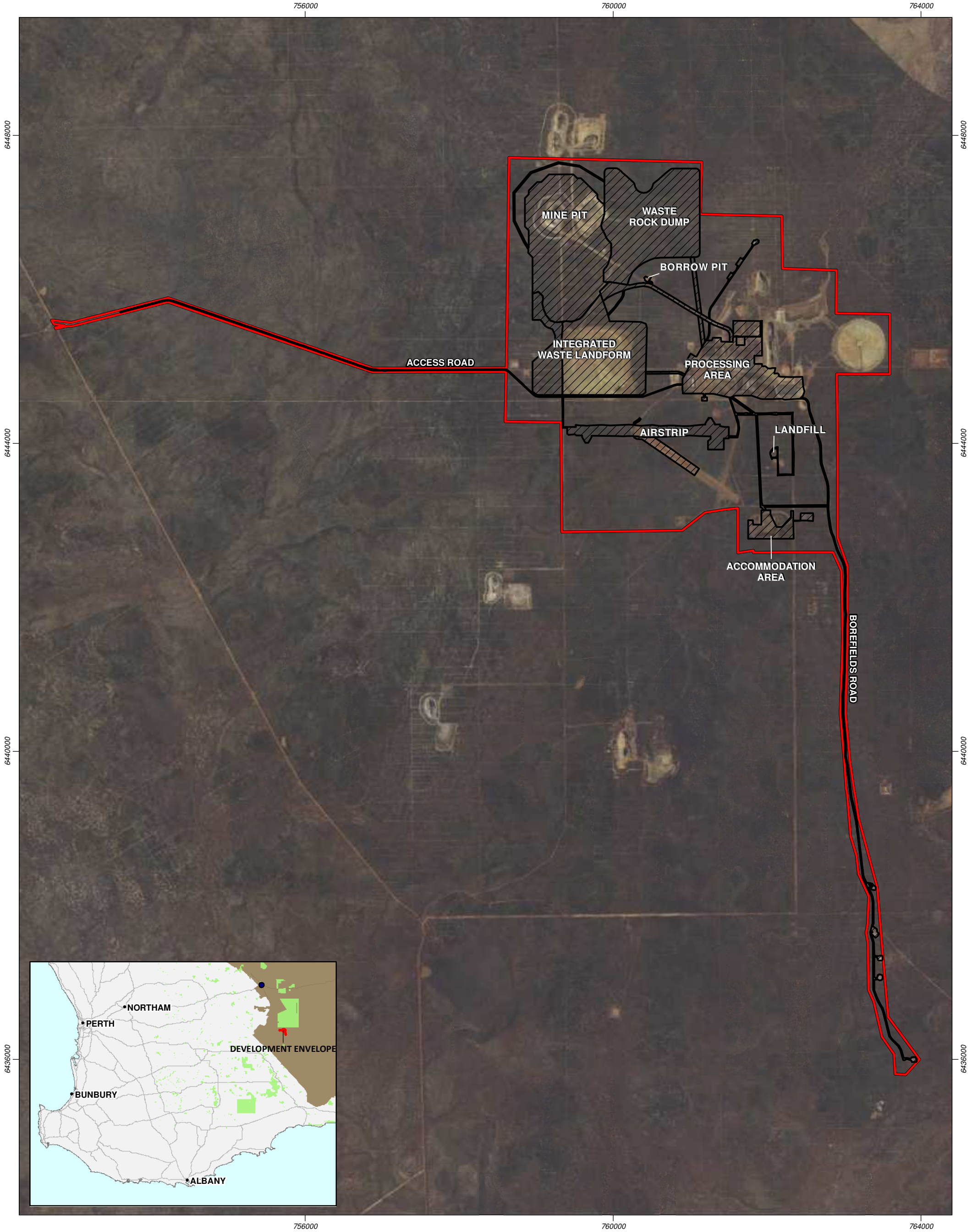


Figure 1: Earl Grey Lithium Project Development Envelope and Proposed layout

N

Scale 1:45,000 at A3

0

500

1,000

m

Legend

Development envelope

Indicative proposal footprint

Coordinate System: GDA 1994 MGA Zone 50

Date: 17/07/2019





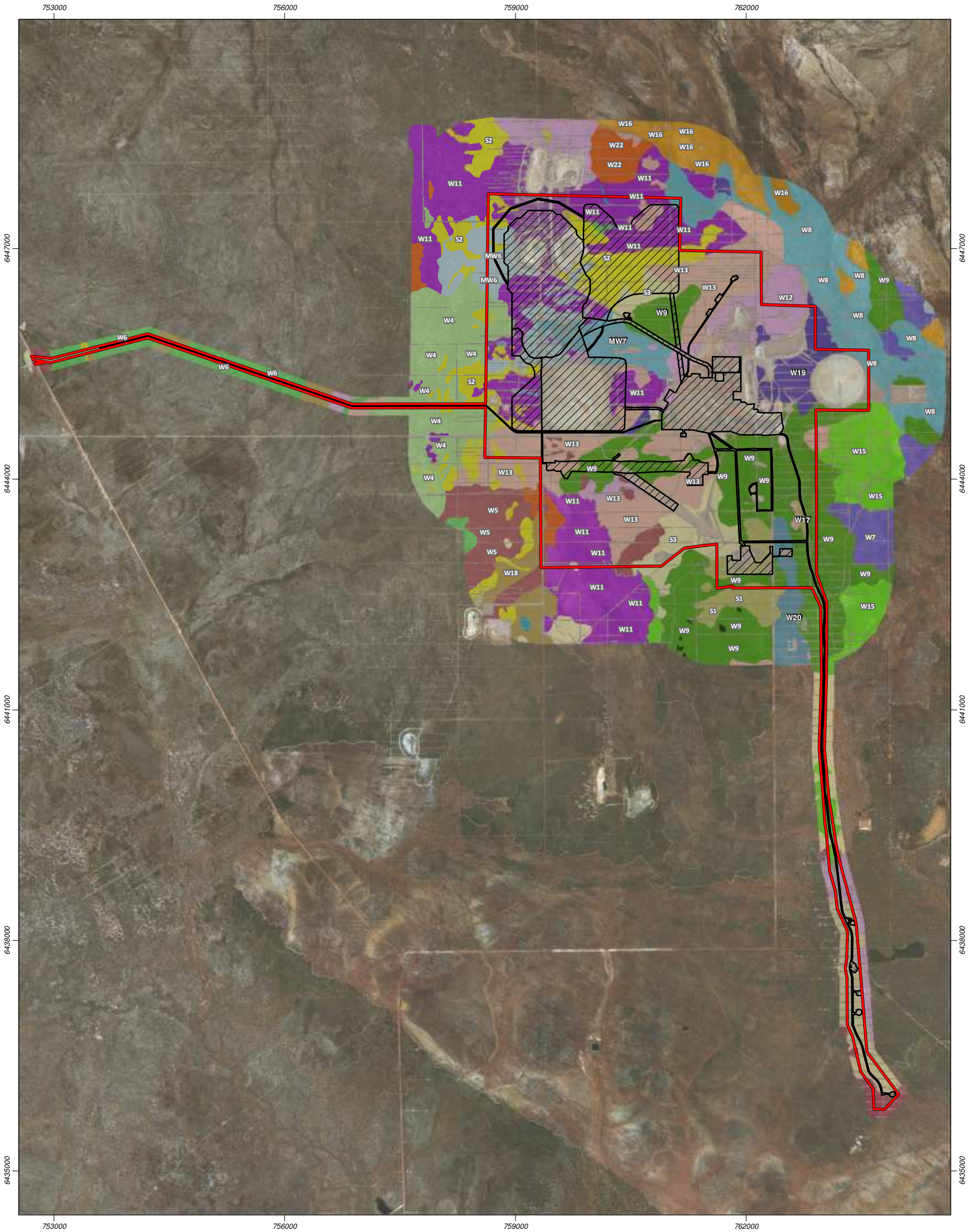


Figure 3: Vegetation mapping

N

Scale 1:45,000 at A3

0

500

1,000

m

Coordinate System: GDA 1994 MGA Zone 50

Date: 17/07/2019

Legend

Development envelope

Indicative proposal footprint

Vegetation communities

H1

MW6

MW7

MW8

S1

S2

S3

W4

W5

W6

W7

W8

W9

W10

W11

W12

W13

W14

W15

W16

W17

W18

W19

W20

W21

W22

Cleared



G:\Strategen\GIS\Consult\2017\SQM\SQM17406\01\_GIS\_documents\ArcMap\_documents\SQM17406\_G021\_RevD.mxd

© 2019. Whilst every care has been taken to prepare this map, Strategen JBS&G & Covalent lithium makes no representations or warranties about its accuracy, reliability, completeness or suitability for any particular purpose and cannot accept liability and responsibility of any kind (whether in contract, tort or otherwise) for any expenses, losses, damages and/or costs (including indirect or consequential damage) which are or may be incurred by any party as a result of the map being inaccurate, incomplete or unsuitable in any way and for any reason.

Service Layer Credits: Source: Esri, DigitalGlobe, GeoEye, Earthstar Geographics, CNES/Airbus DS, USDA, USGS, AeroGRID, IGN, and the GIS User Community Landgate: Cadastre, 07/2019. Client: Covalent lithium. Site data, 7/2019. Created by: CJT



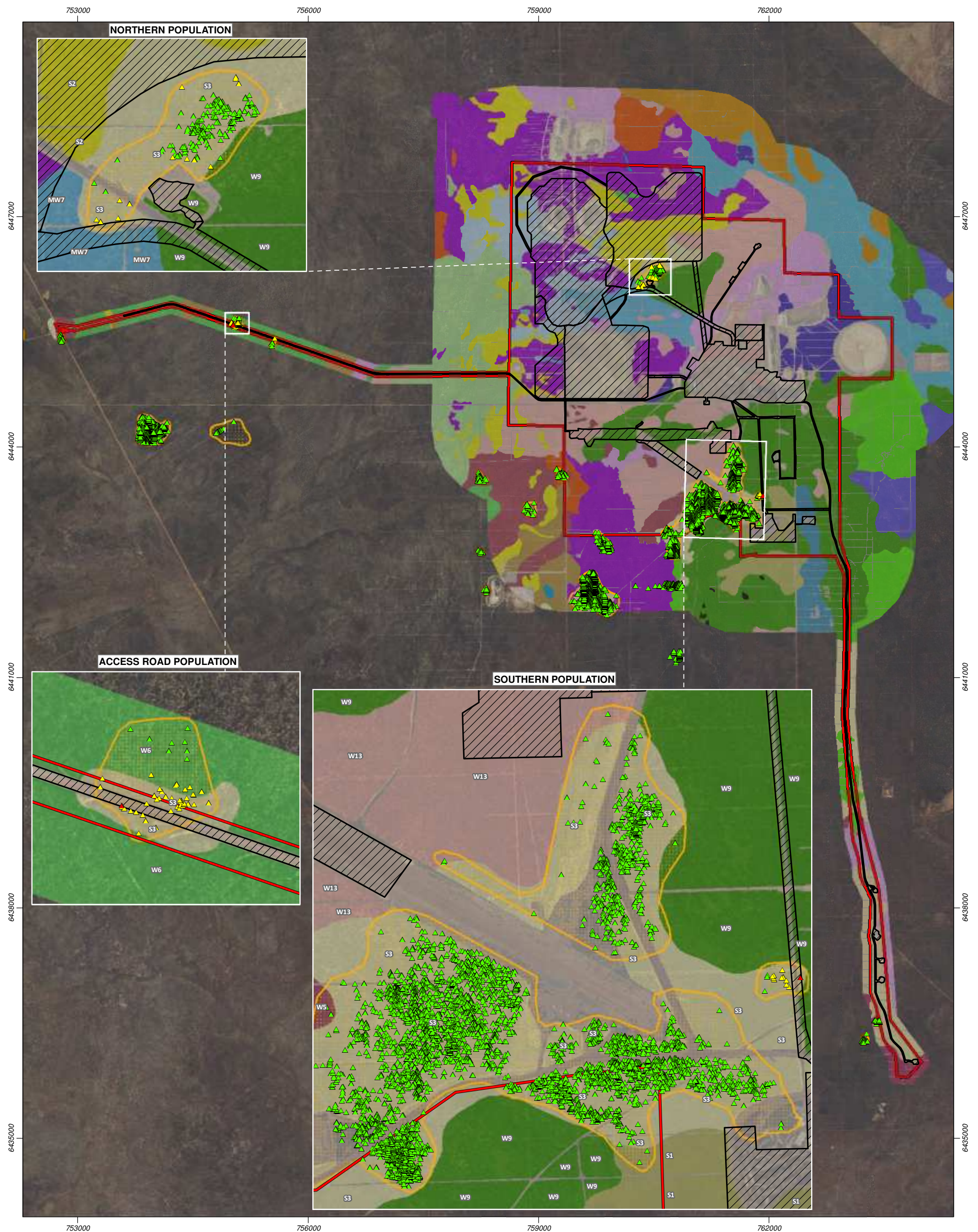
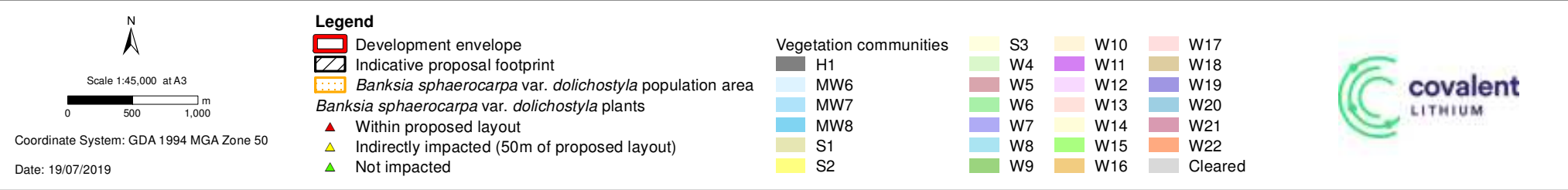


Figure 4: *Banksia sphaerocarpa* var. *dolichostyla* locations



F:\Strategen\GIS\Consult\2017\SQM\SQM17406\01\_GIS\_documents\ArcMap\_documents\SQM17406\_G023\_RevF.mxd

© 2019. Whilst every care has been taken to prepare this map, Strategen JBS&G & Sociedad Química y Minera de Chile makes no representations or warranties about its accuracy, reliability, completeness or suitability for any particular purpose and cannot accept liability and responsibility of any kind (whether in contract, tort or otherwise) for any expenses, losses, damages and/or costs (including indirect or consequential damage) which are or may be incurred by any party as a result of the map being inaccurate, incomplete or unsuitable in any way and for any reason.

Service Layer Credits: SLIP Public Services Locate Imagery 2019. Client: Sociedad Química y Minera de Chile. Site data, 7/2019. Created by: CJT









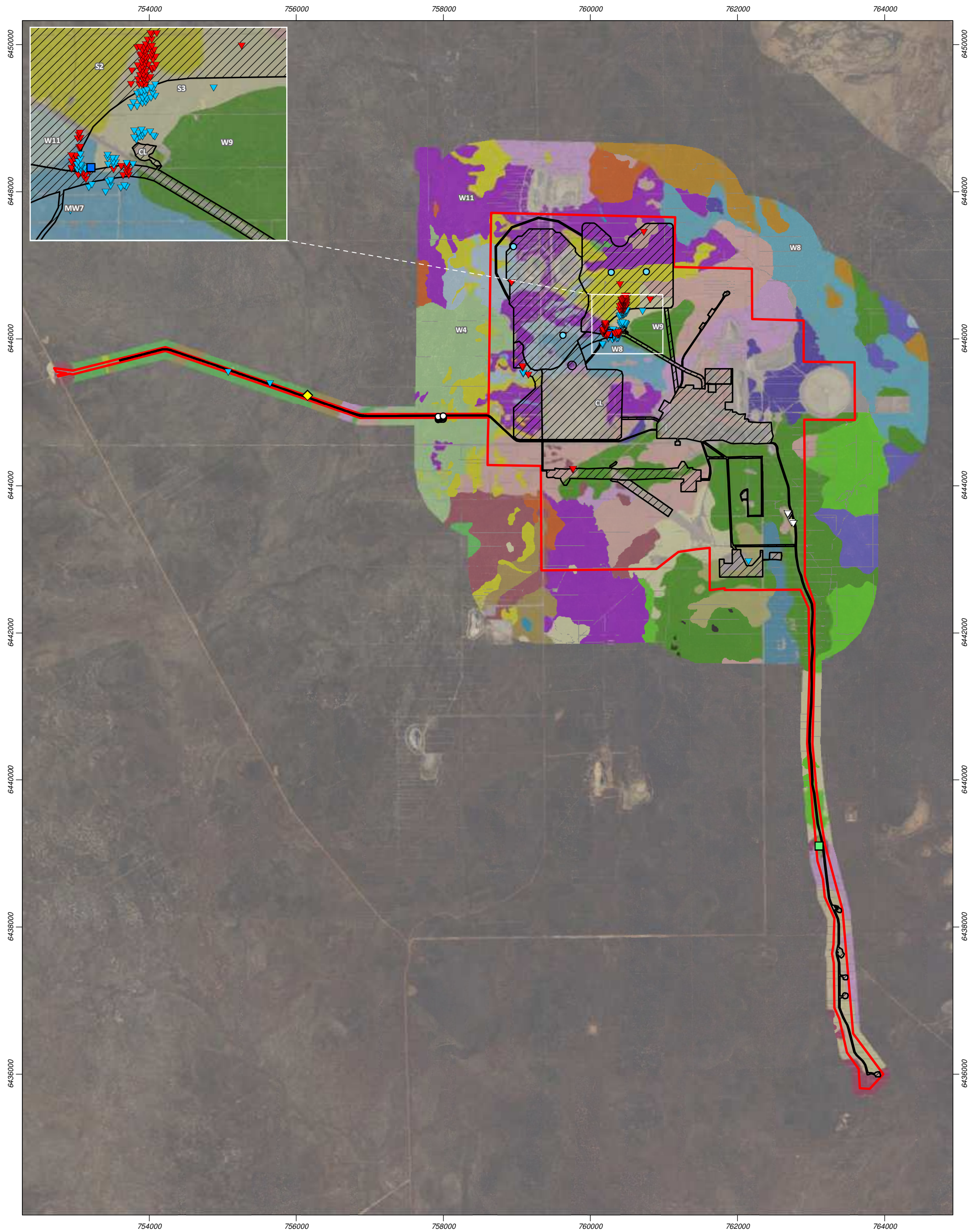
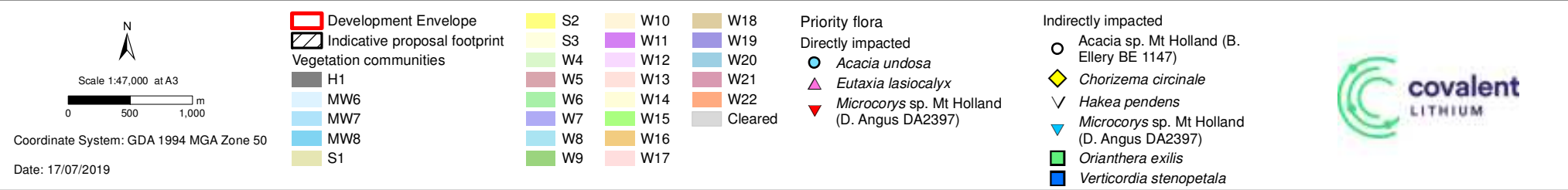


Figure 6: Conservation significant flora species directly and indirectly impacted



G:\Stratgen\GIS\Consult\2017\SQM\SQM17406\01\_GIS\_documents\ArcMap\_documents\SQM17406\_G038\_RevE.mxd

© 2019. Whilst every care has been taken to prepare this map, Strategen JBS&G & Covalent Lithium makes no representations or warranties about its accuracy, reliability, completeness or suitability for any particular purpose and cannot accept liability and responsibility of any kind (whether in contract, tort or otherwise) for any expenses, losses, damages and/or costs (including indirect or consequential damage) which are or may be incurred by any party as a result of the map being inaccurate, incomplete or unsuitable in any way and for any reason.

Service Layer Credits: SLIP Public Services Locate Imagery 2019. Client: Covalent Lithium. Site data, 7/2019. Created by: CJT



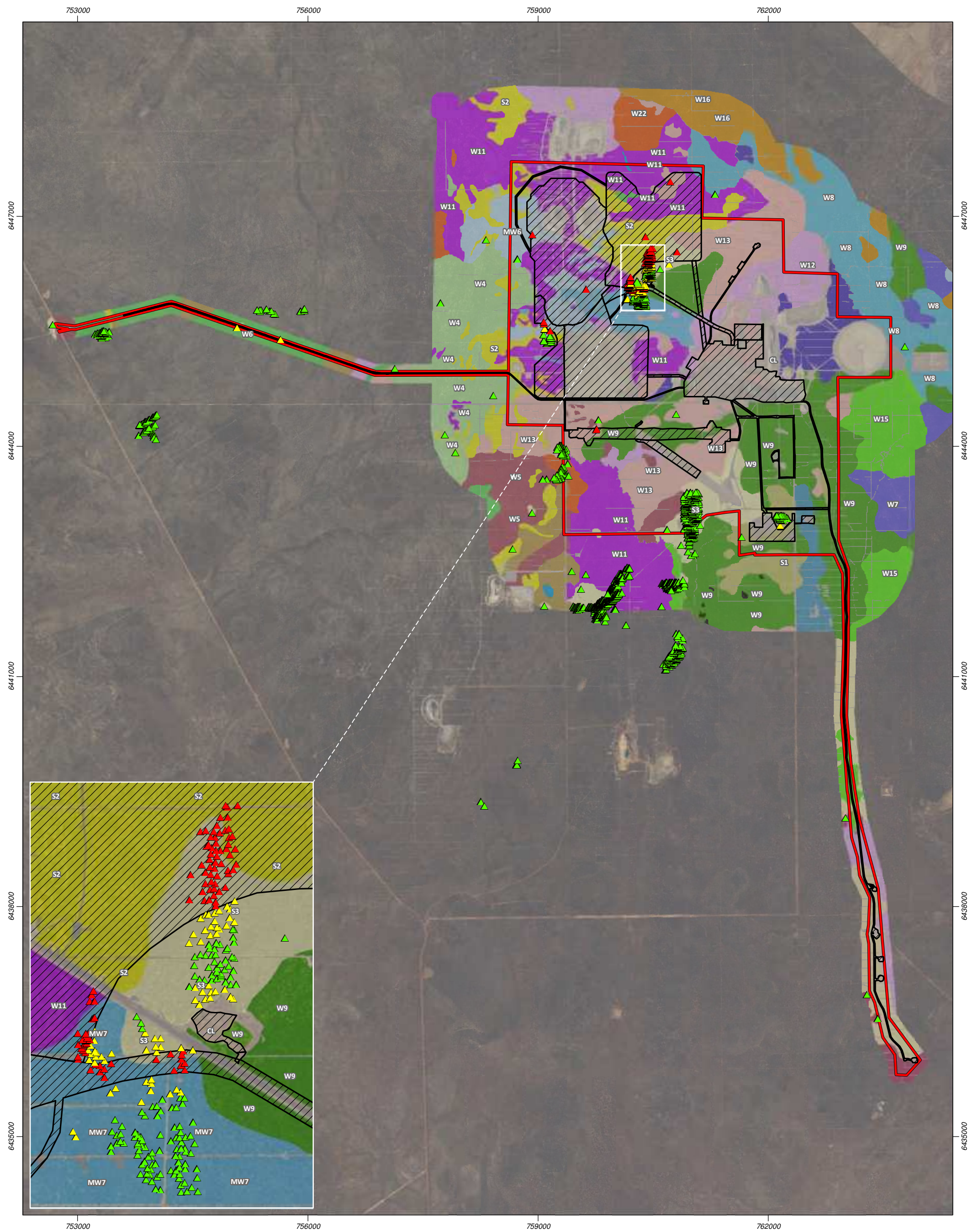
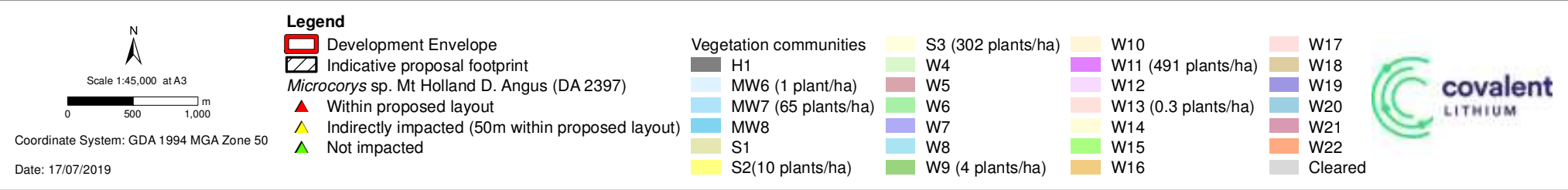


Figure 7: *Microcorys* sp. Mt Holland locations



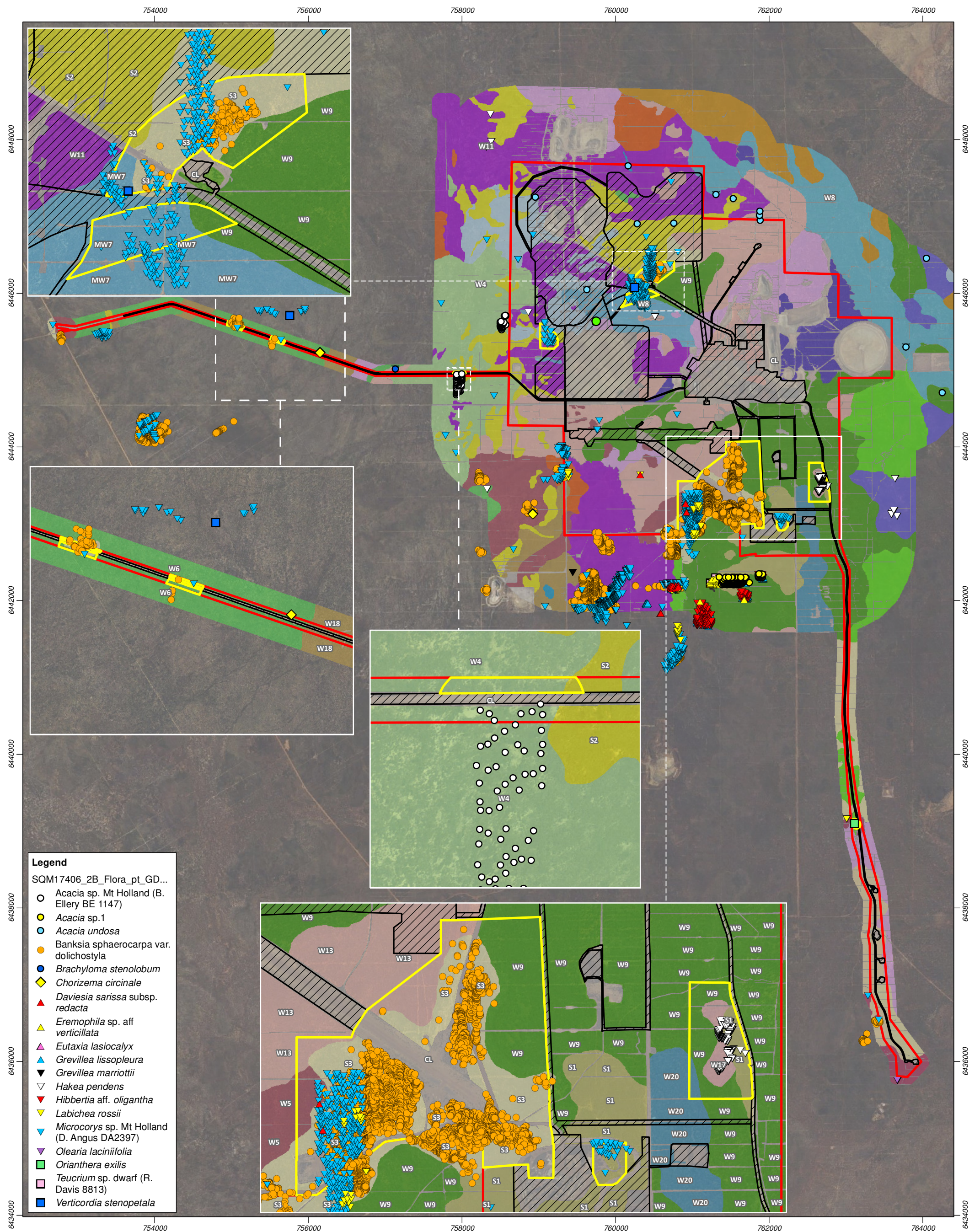
G:\Strategen\GIS\Consult\2017\SQM\SQM17406\01\_GIS\_documents\ArcMap\_documents\SQM17406\_G045\_RevA.mxd

© 2019. Whilst every care has been taken to prepare this map, Strategen JBS&G & Covalent Lithium makes no representations or warranties about its accuracy, reliability, completeness or suitability for any particular purpose and cannot accept liability and responsibility of any kind (whether in contract, tort or otherwise) for any expenses, losses, damages and/or costs (including indirect or consequential damage) which are or may be incurred by any party as a result of the map being inaccurate, incomplete or unsuitable in any way and for any reason.

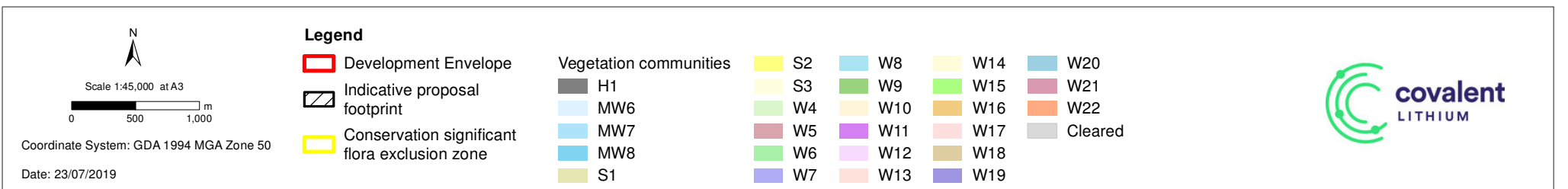
Service Layer Credits: SLIP Public Services Locate 2019. Client: Covalent Lithium. Site data, 7/2019. Created by: CJT







**Figure 8: Conservation significant flora exclusion zones**



W:\Strategen\GIS\Consult\2017\SQM\SQM17406\01\_GIS\_documents\ArcMap\_documents\SQM17406\_G050\_RevA.mxd

© 2019. Whilst every care has been taken to prepare this map, Strategen JBS&G & Covalent Lithium makes no representations or warranties about its accuracy, reliability, completeness or suitability for any particular purpose and cannot accept liability and responsibility of any kind (whether in contract, tort or otherwise) for any expenses, losses, damages and/or costs (including indirect or consequential damage) which are or may be incurred by any party as a result of the map being inaccurate, incomplete or unsuitable in any way and for any reason.

Service Layer Credits: SLIP Public Services Locate Imagery 2019. Client: Covalent Lithium. Site data, 7/2019. Created by: cthatcher