

# Borehole: Bore 22/1

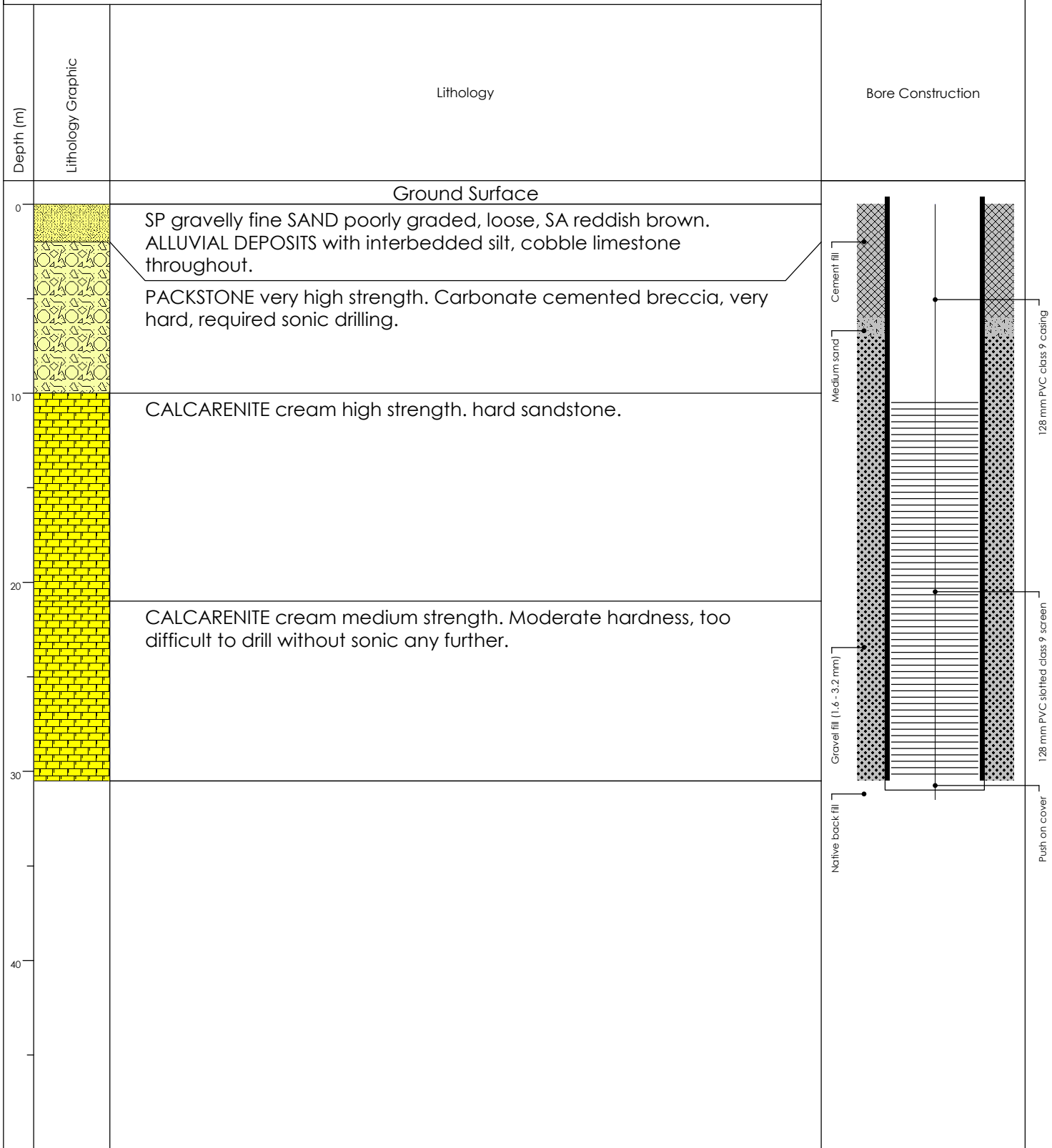
Project: Lighthouse Resort  
Client: Z1Z Resorts Pty Ltd  
Location: Exmouth

Zone: 50  
Easting: 201635  
Northing: 7585374

Elevation: 15 (mAHD) Map estimate  
SWL: 12.22 m (toc)  
Salinity: 26.2 mS/cm

Total Depth: 30.5 m  
Logged By: Don Scott  
Checked By: Samantha Callander

## SUBSURFACE PROFILE



Drilling Company: Ecoprobe  
Drilling Equipment: Mud Rotary & Sonic  
Drilling Method: Mud

Started: 10/10/2022  
Completed: 13/10/2022  
Compiled: 2/12/2022

# Borehole: Bore 22/2

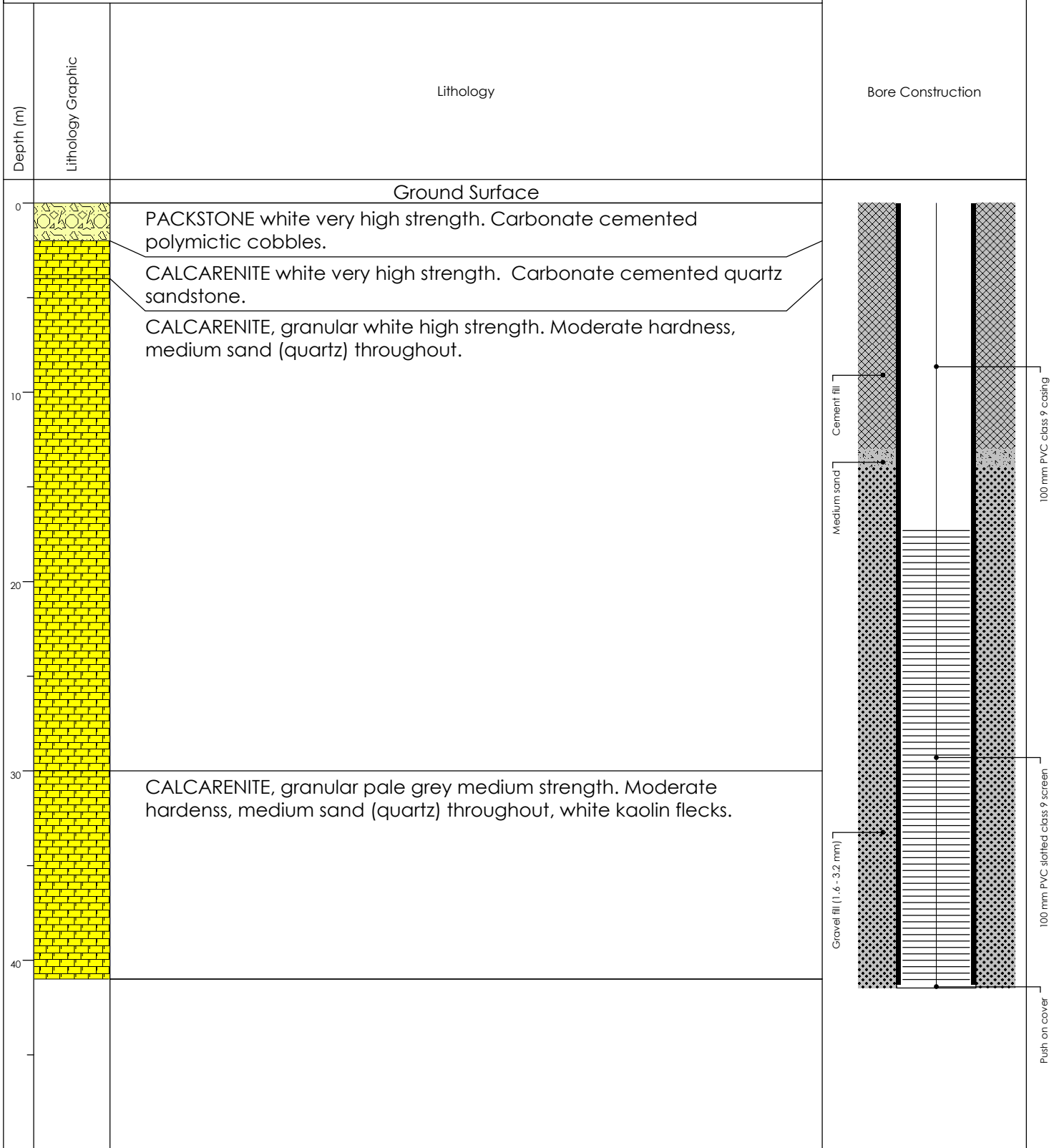
Project: Lighthouse Resort  
Client: Z1Z Resorts Pty Ltd  
Location: Exmouth

Zone: 50  
Easting: 201726  
Northing: 7585391

Elevation: 16 (mAHD) Map estimate  
SWL: 12.74 m (toc)  
Salinity: 26.7 mS/cm

Total Depth: 41.3 m  
Logged By: Don Scott  
Checked By: Samantha Callander

## SUBSURFACE PROFILE

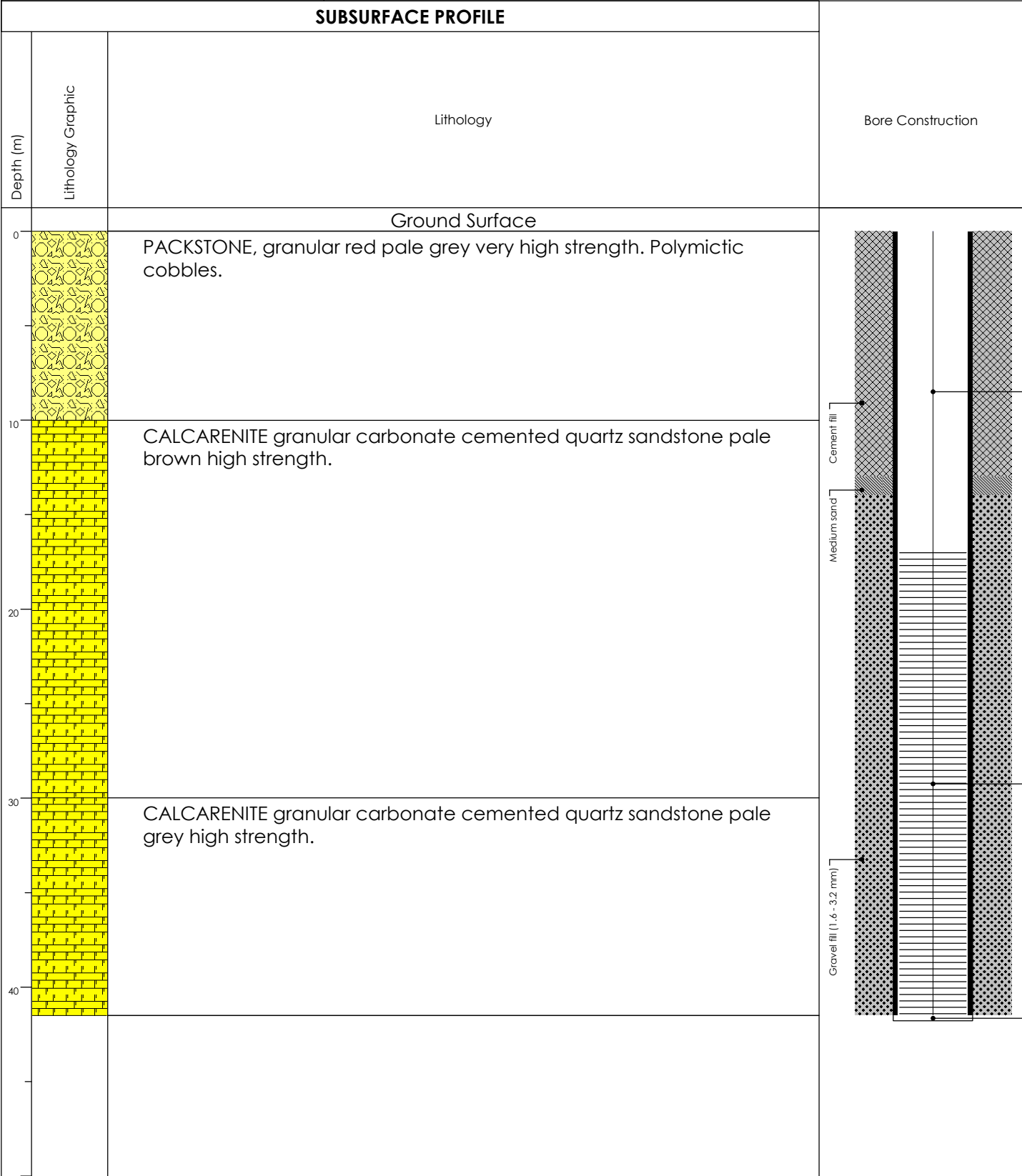


Drilling Company: Ecoprobe  
Drilling Equipment: Mud Rotary & Sonic  
Drilling Method: Mud

Started: 13/10/2022  
Completed: 14/10/2022  
Compiled: 2/12/2022

# Borehole: Bore 22/3

Project: Lighthouse Resort	Zone: 50	Elevation: 17 (mAHD) Map estimate	Total Depth: 41.5 m
Client: Z1Z Resorts Pty Ltd.	Easting: 201687	SWL: 14.04 m (toc)	Logged By: Don Scott
Location: Exmouth	Northing: 7585346	Salinity: 27.6 mS/cm	Checked By: Samantha Callander



Drilling Company: Ecoprobe  
Drilling Equipment: Mud Rotary  
Drilling Method: Mud

Started: 14/10/2022  
Completed: 15/10/2022  
Compiled: 2/12/2022