



Smiths Beach Project Coastal Tourism Village, Yallingup WA

Smiths 2014 Pty Ltd

Conservation Significant Fauna Management Plan

JBS&G 65771 | 159921 (Rev 6)

10 December 2025





We acknowledge the Traditional Custodians of Country throughout Australia and their connections to land, sea and community.

We pay respect to Elders past and present and in the spirit of reconciliation, we commit to working together for our shared future.

Caring for Country The Journey of JBS&G
Artist: Patrick Caruso, Eastern Arrernte



Executive Summary

Smiths 2014 Pty Ltd (the Proponent) is proposing to develop Lot 4131 Smiths Beach Road (the Proposal) in Yallingup, Western Australia, into a coastal tourism village. The Proposal is within the Shire of Busselton, approximately 23 kilometres (km) west of the Busselton CBD, adjacent to the Leeuwin Naturaliste National Park and bounded by Smiths Beach Road and Indian Ocean Road.

The Proposal was subject to referral on the 24 December 2021 under section (s.) 39 of the Western Australia *Environmental Protection Act 1986* (EP Act) and with level of assessment determined on the 18 May 2022 as public environmental review under s.40(2)(b) of the EP Act.

This Conservation Significant Fauna Management Plan (CSFMP) has been prepared to outline the Proponent's approach to managing potential impacts on conservation significant terrestrial fauna from implementation of the Proposal. This CSFMP addresses terrestrial fauna species listed under the Commonwealth *Environment Protection and Biodiversity Conservation Act 1999* (EPBC Act) as Matters of National Significance (MNES), fauna species listed under the State *Biodiversity Conservation Act 2016* (BC Act), for assessment under Part IV of the State EP Act and/or are listed as priority species by the Department of Biodiversity, Conservation and Attractions (DBCA).

Table ES 1: Conservation Significant Fauna Management Plan Executive Summary

CSFMP Executive Summary	
Proposal Name	Smiths Beach Project, Yallingup – Coastal Tourism Village
Proponent Name	Smiths 2014 Pty Ltd
Ministerial Statement Number	To be determined.
Purpose of the CSFMP	The purpose of this CSFMP is to minimise impacts on conservation significant fauna, particularly the Western Ringtail Possum (WRP), by ensuring effective monitoring, mitigation, and management throughout the Proposal's implementation.
Key environmental factor/s, outcome/s and/or objectives	<p>Hybrid/Outcome-based provisions:</p> <ol style="list-style-type: none"> 2.11 ha of Western Ringtail Possum habitat within POS/Conservation lots will be retained to support possum use, movement and connectivity within the Development Envelope. There is no direct injury or mortality of Western Ringtail Possum individuals during clearing or construction. A 1.79 ha Western Ringtail Possum Habitat Conservation and Connectivity Zone will be established with 40% canopy cover retained (0.72ha) and managed so that Western Ringtail Possum habitat quality, canopy connectivity and movement pathways within the zone are maintained. The Proponent must maintain connected habitat within the Development Envelope at a scale and configuration sufficient to ensure ongoing accessibility for Western Ringtail Possums between adjacent National Park and areas of retained habitat in the Development Envelope. For each drey removed within the Development Envelope, a replacement drey must be installed within a location to be agreed upon in consultation with DBCA. This number must be maintained for a period of 10 years through ongoing maintenance or replacement as necessary.

Objective-based provisions:

1. Minimise the risk of injury or mortality to native fauna within the Development Envelope resulting from Proposal activities.
 - a. Minimise direct impacts to native fauna from injury or mortality during clearing and construction.
 - b. Minimise indirect impacts to native fauna from predation by introduced predators.
2. Minimise reduction in resource availability for Western Ringtail Possums and other conservation significant fauna as much as possible.
 - a. Retain as much Western Ringtail Possum habitat as possible.
 - b. Enhance retained habitat to provide the highest possible resource availability for Western Ringtail Possums and other conservation significant fauna.
3. Maintain and enhance ecological connectivity for native fauna, at both canopy and ground levels, within the Development Envelope and into adjacent National Park.
 - a. Provide canopy-level possum bridge connections within the Development Envelope and to adjacent vegetation to the south and the east of the Development Envelope.
4. Avoid and minimise impacts to habitats supporting conservation significant fauna.
 - a. Avoid unnecessary clearing of understorey and groundcover vegetation.
 - b. When preparing VMPs, prioritise retention of habitat trees, including large trees, trees with hollows (any size), and species important for black cockatoo and Western Ringtail Possum foraging.
 - c. Ensure campground infrastructure, access arrangements and lighting are designed and operated to minimise disturbance, prevent habitat fragmentation and maintain canopy connectivity within the Western Ringtail Possum Habitat Conservation and Connectivity Management Zone.
 - d. Minimise decline in conservation significant fauna habitat as a result of altered fire regimes from the Proposal.
 - e. Minimise degradation of conservation significant fauna habitat due to the introduction of weeds and/ or dieback as a result of the Proposal.

Proposed Construction Date	2026 – 2029 (pending approval timeframes)
----------------------------	---

CSFMP Required Pre-Construction	Yes
---------------------------------	-----

Table of Contents

Executive Summary.....	i
Table of Contents.....	iii
Abbreviations	v
1. Context, Scope and Rationale	1
1.1 Proposal	1
1.2 Key Environmental Factor.....	4
1.3 Condition Requirements.....	5
1.4 Rationale and Approach.....	5
1.4.1 Environmental Outcomes and Management Objectives	6
1.4.2 Survey Effort	7
1.4.3 Key Assumptions and Uncertainties.....	17
1.4.4 Risk-based Management Approach.....	18
1.4.5 Rationale for Choice of Indicators and Management Actions.....	18
2. CSFMP Provisions	23
2.1 Outcome-based Provisions	23
2.2 Objective-based Provisions.....	27
3. Adaptive Management and Review of the CSFMP	34
3.1 Adaptive Management and Review.....	34
3.2 Reporting.....	35
3.2.1 Internal Reporting.....	35
3.2.2 External Reporting	35
4. Communication	36
4.1 Stakeholder consultation	36
4.2 External communications and complaints.....	36
5. Limitations	37
6. References	38
Appendix A Risk Assessment	41
Appendix B Guidelines for on ground selection of vegetation to be retained	43
Appendix C Proposed Monitoring Program for Western Ringtail Possum.....	45
Appendix D Proposed Pre-clearance Trapping Program	48
Appendix E Assessment against Western Ringtail Possum Recovery Plan Objectives	49

List of Tables

Table 1-1. Summary conservation significant fauna that may be impacted by the Proposal, and the key impacts relating to each species	4
--	---

Table 1-2: Supporting historic and current technical studies for Terrestrial Fauna.....	7
Table 1-3: Occurrence of conservation significant terrestrial fauna in the Development Envelope	8
Table 1-4: Broad fauna habitat types occurring within the Development Envelope (Biologic 2024a)	10
Table 2-1: Outcome-based Provisions.....	23
Table 2-2: Objective-based Provisions	27
Table 3-1: Internal Fauna Reporting Actions.....	35
Table 6-1: Likelihood	41
Table 6-2: Consequence	41
Table 6-3: Risk Rating	41
Table 6-4: Risk Assessment of Potential Impacts from the Proposal	41
Table 6-5 Species to be priorities for retention	43
Table 6-6 Proposed Western Ringtail Possum Monitoring Program	45
Table 6-7 Assessment against Western Ringtail Possum Recovery Plan Objectives and Actions.....	50

List of Figures

Figure 1-1: Regional Context	2
Figure 1-2: Proposal Elements.....	3
Figure 1-3: Broad Fauna Habitats	16
Figure 1-4 Retained Western Ringtail Possum Habitat in POS/Conservation Lots	21
Figure 1-5 Western Ringtail Possum Habitat Conservation and Connectivity Zone and Indicative Possum Bridge Network.....	22

Abbreviations

Term	Definition
ALARP	As Low as Reasonably Practical
BC Act	Western Australia <i>Biodiversity Conservation Act 2016</i>
CSFMP	Conservation Significant Fauna Management Plan
DBCA	Department of Biodiversity Conservation and Attractions
DCCEEW	Department of Climate Change, Energy, the Environment, and Water
EP Act	Western Australian <i>Environmental Protection Act 1986</i>
EPA	Environmental Protection Agency
EPBC Act	Commonwealth <i>Environmental Protection, Biodiversity and Conservation Act 1999</i>
ERD	Environmental Review Document
ESD	Environmental Scoping Document
ha	Hectares
km	Kilometres
MNES	Matters of National Environmental Significance
PEC	Priority Ecological Community
PER	Public Environmental Review
POS	Public Open Spaces
s.	Section
UAR	Universal Access Ramp
WA	Western Australia

1. Context, Scope and Rationale

1.1 Proposal

Smiths 2014 Pty Ltd (the Proponent) plans to develop Lot 4131 Smiths Beach Road (the Proposal), Yallingup, Western Australia (WA), into a coastal tourism village. The Proposal is located within the Shire of Busselton, approximately 23 km west of Busselton CDB. The Proposal is bound by Smiths Beach Road to the east, the Indian Ocean to the west, the existing Foreshore Reserve to the north and the Leeuwin-Naturaliste National Park to the south (Figure 1-1).

The Proposal includes development of, but not limited to:

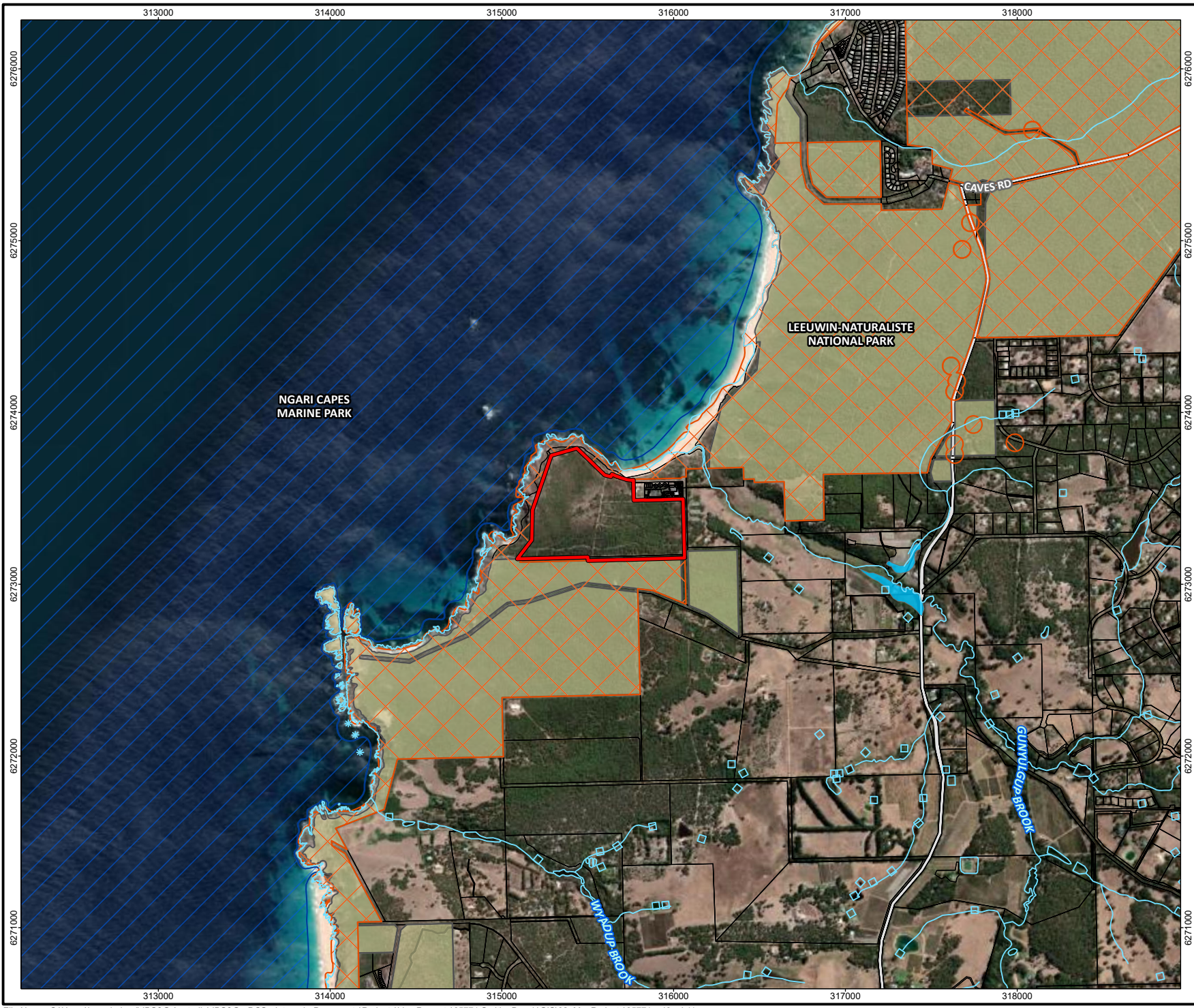
- Tourist development including hotel accommodation and wellness centre;
- A campground;
- 61 holiday homes;
- Community hub including café, bakery, general store and the Cape-to-Cape Welcome Centre; and
- Surf Lifesaving Club facilities.

The Proposal (Figure 1-2) was referred to the EPA under section 38 of the EP Act and on the 18 May 2022 the EPA determined that the Proposal would be assessed and set the level of assessment at Public Environmental Review (PER) with a proponent-prepared Environmental Scoping Document (ESD). The ESD had a two-week public review period between 29 May 2023 and 13 June 2023 while the review period for the Environmental Review Document (ERD) was eight weeks and occurred between 16 December 2024 and 10 February 2025. The Proposal was also referred to the Department of Climate Change, Energy, the Environment and Water (DCCEEW) for its potential to impact Matters of National Environmental Significance (MNES) in 2021 and was determined to be a 'Controlled Action' under the EPBC Act (EPBC 2021/9141). The Proposal is being assessed as an accredited assessment under the EP Act in accordance with section 87 of the EPBC Act.

Key MNES impacted by the Proposal and addressed in this CSFMP include:

- Western ringtail possum (*Pseudocheirus occidentalis*); and
- Black Cockatoos: Baudin's (*Zanda baudinii*, previously *Calyptorhynchus baudinii*), Carnaby's (*Z. latirostris*, previously *C. latirostris*), and Forest red-tailed Black Cockatoo (*C. banksii naso*).
- Coastal plains skink (*Ctenotus ora*; Priority 3 – DBCA Priority List);
- Quenda (*Isoodon fusciventer*; Priority 4 – DBCA Priority List);
- Western Brush Wallaby (*Notamacropus Irma*; Priority 4 – DBCA Priority List);
- Barking Owl (*Ninox connivens conniven*; Priority 3- DBCA Priority List); and
- Wambenger brush-tailed phascogale (*Phascogale tapoatafa*; CD – BC Act).

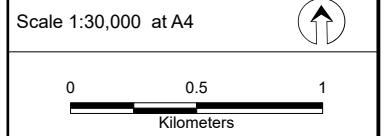
This Conservation Significant Fauna Management Plan (CSFMP) has been prepared to outline how potential impacts, identified through the environmental impact assessment (EIA) undertaken as part of the ERD on the relevant environmental factor (terrestrial fauna)/ MNES detailed above, will be avoided, mitigated, monitored, and managed, ensuring that the environmental outcomes and objectives can be achieved.



- Legend**
- Cadastral boundary (LGATE-002)
 - Environmentally Sensitive Areas (DWER-046)
 - Legislated lands and waters (DBCA-011)**
 - Marine Park
 - National Park
 - Geomorphic wetlands Leeuwin (DBCA-043)**
 - Palusplain
 - Hydrography (DWER-031)
 - Major road



Job No: 65771
 Client: Smiths 2014 Pty Ltd
 Version: A Date: 29/05/2025
 Drawn By: bsunderland Checked By: RM



Coord. Sys. GDA2020 MGA Zone 50

**Lot 4131 Smiths Beach Road
 Yallingup, WA**

REGIONAL CONTEXT

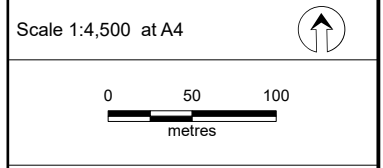
FIGURE 1-1



- Legend**
- Development envelope
 - Proposed full clearing
 - Proposed modified areas
 - Area to be placed into conservation (Area 1)
 - Public Open Space/Conservation Lot (Area 2)
 - Public Open Space (Area 3)
 - Public Open Space (Area 4)
 - Temporary construction area outside lot boundary
 - Cadastral boundary (LGATE-002)
 - Roads (LGATE-195)
 - Minor road
 - Track



Job No: 65771
 Client: Smiths 2014 Pty Ltd
 Version: C Date: 23/06/2025
 Drawn By: bsunderland Checked By: YS



Coord. Sys. GDA2020 MGA Zone 50

**Lot 4131 Smiths Beach Road
 Yallingup, WA**

PROPOSAL ELEMENTS

FIGURE 1-2

1.2 Key Environmental Factor

This CSFMP specifically addresses the EPA’s environmental factor for Terrestrial Fauna, defined as:

“Animals living on land or using land (including aquatic systems) for all or part of their lives. Terrestrial fauna includes vertebrate (birds, mammals including bats, reptiles, amphibians, and freshwater fish) and invertebrate (arachnids, crustaceans, insects, molluscs and worms) groups (EPA 2016a).”

EPA defines fauna habitat as:

“The natural environment of an animal or assemblage of animals, including biotic and abiotic elements, that provides a suitable place for them to live (e.g. breed, forage, roost or seek refuge). The scale at which fauna habitat is defined will depend on the ecological requirements of the species considered (EPA 2016a).”

This CSFMP focuses on the management of the conservation significant species listed in Table 1-1 , outlining measures to avoid and/or minimise impacts resulting from the Proposal.

Table 1-1. Summary conservation significant fauna that may be impacted by the Proposal, and the key impacts relating to each species

Species	Conservation Status	Key impacts of Proposal
Western Ringtail Possum (<i>Pseudocheirus occidentalis</i>)	Critically Endangered – EPBC/BC Act	<ul style="list-style-type: none"> ○ Loss of core (Peppermint Forest) and secondary (Jarrah/Marri Forest) habitat; ○ Fragmentation of remaining habitat into isolated patches; ○ Injury or mortality of Western Ringtail Possum individuals due to actions of clearing, vehicle/machinery strike; and ○ Injury or mortality of Western Ringtail Possum due to increased abundance of introduced predators (including pets) and/or increased susceptibility to predation due to Western Ringtail Possum coming to ground due to loss of canopy connectivity.
Carnaby’s Black Cockatoo (<i>Zanda latirostris</i>) Baudin’s Black Cockatoo	Endangered – EPBC/BC Act	<ul style="list-style-type: none"> ○ Loss of foraging habitat; and ○ Loss of large trees which have the potential to provide nesting hollows in future.
Forest Red-tailed Black Cockatoo (<i>Calyptorhynchus banksii naso</i>)	Vulnerable – EPBC/BC Act	
Wambenger Brush-tailed Phascogale (<i>Phascogale tapoatafa</i>)	CD – BC Act	<ul style="list-style-type: none"> ○ Loss of habitat (including large trees that provide hollows); ○ Fragmentation of habitat; ○ Injury and mortality due to actions of clearing, vehicle/machinery strike; and ○ Injury and mortality due to increased predation due to an increased abundance of introduced predators (including pets).
Barking Owl (<i>Ninox connivens connivens</i>)	DBCA Priority 3	<ul style="list-style-type: none"> ○ Habitat loss and fragmentation; and ○ Injury and mortality due to actions of clearing, vehicle/machinery strike.

Species	Conservation Status	Key impacts of Proposal
Coastal Plains Skink (<i>Ctenotus ora</i>)	DBCA Priority 4	<ul style="list-style-type: none"> ○ Habitat loss and fragmentation; ○ Injury and mortality due to actions of clearing, vehicle/machinery strike; and ○ Injury and mortality due to increased predation due to an increased abundance of introduced predators (including pets).
Quenda (<i>Isoodon fusciventer</i>)	DBCA Priority 4	<ul style="list-style-type: none"> ○ Habitat loss and fragmentation; ○ Injury and mortality due to actions of clearing, vehicle/machinery strike; and ○ Injury and mortality due to increased predation due to an increased abundance of introduced predators (including pets).
Western Brush Wallaby (<i>Notamacropus irma</i>)	DBCA Priority 4	<ul style="list-style-type: none"> ○ Habitat loss and fragmentation; and ○ Injury and mortality due to actions of clearing, vehicle/machinery strike.

1.3 Condition Requirements

This CSFMP will be updated to include requirements from relevant conditions of approval.

1.4 Rationale and Approach

The provision of this CSFMP have been designed to ensure the implementation of the Proposal will meet the EPA's objective for Terrestrial Fauna:

"To protect terrestrial fauna so that biological diversity and ecological integrity are maintained".

For Western Ringtail Possums, the Proposal is expected to have an unavoidable impact on resource availability within the Development Envelope, due to the level of vegetation clearing required. However, the Proponent is committed to minimising impacts to Western Ringtail Possums as far as practicable within the constraints of the project. Therefore, rather than completely clearing the Development Envelope, a combination of complete clearing (where required for building envelopes) and partial modification of vegetation is proposed. Partial modification would allow for retention of some large trees and clumps of shrubs that currently provide habitat for Western Ringtail Possums and other conservation significant fauna (such as ground dwelling species and black cockatoos). In addition to pursuing partial modification of vegetation, other mitigation measures proposed to minimise impacts to Western Ringtail Possums as much as possible within the constraints of the Proposal include:

- Providing canopy connectivity for Western Ringtail Possum via construction of a network of possum bridges and retention of habitat (where possible);
- Provision of above-ground water sources; and
- Control of feral predators where required.

The extent to which measures such as partial modification of vegetation, retention of habitat structures and provision of connectivity can be implemented will ultimately be determined through detailed design. However, the Proponent's objective remains to retain as much habitat as possible and to support the persistence of Western Ringtail Possums within and adjacent to the Development Envelope. The Proponent will seek to incorporate such outcomes into the final design and associated management approach in accordance with the endorsed vegetation approach.

The Proposal also has the potential to directly and indirectly impact other conservation significant terrestrial species and their habitats; these potential impacts have been identified during the EIA process and are summarised in Table 1-1.

For each relevant conservation significant species included in this CSFMP, the CSFMP provides:

- Targeted management measures to address potential impacts, such as fauna injury, mortality, habitat loss, and connectivity issues;
- A monitoring program specifically tailored for Western Ringtail Possum where direct or indirect impacts may occur; and
- A structured response framework with defined triggers, thresholds, and contingency actions.

These will act as means to evaluate the effectiveness of management measures for direct and indirect impacts on conservation significant fauna species. The CSFMP's development has been guided by baseline survey results and considers the assumptions and uncertainties outlined in the following sections.

Whilst this CSFMP has been targeted towards management actions applicable to conservation significant fauna, many of the management measures identified can be applied to minimise the potential impacts to and the effect of the Proposal, to other fauna taxa which are not of listed conservation significance, therefore some management actions are not divided by conservation significant fauna species.

1.4.1 Environmental Outcomes and Management Objectives

Each conservation significant fauna species impacted by the Proposal is subject to different types of impact (Table 1-1) and requires tailored management actions. The Western Ringtail Possum is currently listed as Critically Endangered and therefore warrants particular attention in this CSFMP. This species can be adequately surveyed via spotlighting and has shown to be successfully managed *in situ* in other developments. For example, experience on the Vasse Diversion Drain project for the Water Corporation indicated that individual animals would remain in their drey, even close to works, provided they remained connected to remaining parts of their home range (Bamford 2024). Where possible, outcome-based provisions have been formulated for this species. As these outcomes require management actions, they are better described as 'hybrid' provisions (EPA 2021) and management actions have been described to achieve the outcomes proposed (incorporated in Table 2-2). Where environmental impacts are more difficult to objectively measure, objective-based provisions have been formulated.

1.4.1.1 Hybrid/Outcome-based measures:

1. 2.11 ha of Western Ringtail Possum habitat within POS/Conservation lots will be retained to support possum use, movement and connectivity within the Development Envelope.
2. There is no direct injury or mortality of Western Ringtail Possum individuals during clearing or construction.
3. 1.79 ha Western Ringtail Possum Habitat Conservation and Connectivity Zone will be established with 40% canopy cover retained (0.72ha) and managed so that Western Ringtail Possum habitat quality, canopy connectivity and movement pathways within the zone are maintained.
4. The Proponent must maintain connected habitat within the Development Envelope at a scale and configuration sufficient to ensure ongoing accessibility for Western Ringtail Possums between adjacent National Park and areas of retained habitat in the Development Envelope.
5. For each drey removed within the Development Envelope, a replacement drey must be installed within a location to be agreed upon in consultation with DBCA. This number must be maintained for a period of 10 years through ongoing maintenance or replacement as necessary.

1.4.1.2 Objective-based measures:

1. Minimise the risk of injury or mortality to native fauna within the Development Envelope resulting from Proposal activities.
 - a. Minimise direct impacts to native fauna from injury or mortality during clearing and construction.
 - b. Minimise indirect impacts to native fauna from predation by introduced predators (including pets).
2. Minimise reduction in resource availability for Western Ringtail Possums and other conservation significant fauna as much as possible.
 - a. Retain as much Western Ringtail Possum habitat as possible.
 - b. Enhance retained habitat to provide the highest possible resource availability for Western Ringtail Possums and other conservation significant fauna.
3. Maintain and enhance ecological connectivity for native fauna, at both canopy and ground levels, within and beyond the Development Envelope.
 - a. Provide canopy-level possum bridge connections within the Development Envelope and adjacent vegetation to the south and the east of the Development Envelope.
4. Avoid and minimise impacts to habitats supporting conservation significant fauna.
 - a. Avoid unnecessary clearing of understorey and groundcover vegetation.
 - b. When preparing Vegetation Management Plans (VMPs), prioritise retention of habitat trees, including large trees, trees with hollows (any size), and species important for black cockatoo and Western Ringtail Possum foraging.
 - c. Ensure campground infrastructure, access arrangements and lighting are designed and operated to minimise disturbance, prevent habitat fragmentation and maintain canopy connectivity within the Western Ringtail Possum Habitat Conservation and Connectivity Management Zone.
 - d. Minimise declines in conservation significant fauna habitat as a result of altered fire regimes from the Proposal.
 - e. Minimise degradation of conservation significant fauna habitat due to the introduction of weeds and/ or dieback as a result of the Proposal.

1.4.2 Survey Effort

Numerous basic (level 1), detailed (level 2) and targeted fauna baseline studies have been undertaken across the Development Envelope since 2001 (Table 1-2). The results of these surveys adequately describe the terrestrial fauna values within the Development Envelope, whilst also providing confidence on the presence/absence of conservation significant fauna species.

Table 1-2: Supporting historic and current technical studies for Terrestrial Fauna

Report title	Date(s)	Focus	Summary
Location 413 Smiths Beach Fauna Assessment. Unpublished report prepared for ATA Environmental (ecologia Environmental Consultants 2001)	April 2001	Fauna habitat and assemblages.	The results were provided to ATA Environmental. The findings were subsequently summarised and compared to the findings with the Level 2 Fauna Assessment (ATA Environmental, 2007b).

Report title	Date(s)	Focus	Summary
Vertebrate Fauna Assessment, Smiths Beach Yallingup (ATA Environmental, 2007b)	29 November – 9 December 2005	Level 2 Fauna Assessment. This survey was designed to complement a vertebrate fauna survey conducted by ecologia Environmental Consultants in April 2001.	Provided as part of the EPA strategic proposal by Canal Rocks Pty Ltd. Eighteen species were trapped over the 10-day period. Additional species were observed as part of opportunistic searches and spotlighting.
Lot 4131 Smiths Beach Road, Yallingup. Detailed Terrestrial Vertebrate Fauna Survey (Biologic 2024a)	1 – 10 November 2020	Detailed terrestrial vertebrate fauna assessment, inclusive of Black Cockatoo and Western Ringtail Possum habitat assessments.	Undertaken to support the current Proposal. Seven broad fauna habitat types recorded. Six conservation significant species were recorded, with an additional three deemed likely to occur.
Smith’s Beach Project Short-Range Endemic Invertebrate Fauna Desktop Assessment	November 2023	The purpose of the desktop assessment was to identify conservation significant and SRE invertebrate fauna occurring, or potentially occurring, in the Development Envelope.	A total of 90 conservation significant and SRE invertebrate taxa have been recorded within 40 km of the Development Envelope. Of these, 27 taxa are currently considered Confirmed SRE, with the rest being Potential SRE or Widespread.
Western Ringtail Possum Assessment (Bamford 2024)	19 – 21 November 2023	Targeted fauna assessment for the Western Ringtail Possum which included a desktop review and site visit in order to determine the status quo of the Western Ringtail Possum in the Development Envelope and provide recommendations for ongoing management.	The Development Envelope is considered to have both core and secondary Western Ringtail Possum habitat and population appears to be concentrated in the northern part of the core habitat (adjacent to Canal Rocks Apartment). It is likely this concentration of Western Ringtail Possum is due to a combination of factors; e.g. existing firebreaks impacting connectivity to the south, supplementary resources available in gardens in the development to the north, and/or environmental factors that make this area preferable.

1.4.2.1 Survey Findings

Conservation Significant Terrestrial Vertebrate Fauna

Up to 78 terrestrial fauna species were recorded from the Biologic (2024a) survey undertaken within the Development Envelope. Of these, six conservation significant fauna species were listed under the EPBC Act, BC Act, or the DBCA Priority list. An additional three conservation significant species were also identified as likely to occur within the Development Envelope. The species listed in Table 1-3 will be managed under this CSFMP.

Table 1-3: Occurrence of conservation significant terrestrial fauna in the Development Envelope

Conservation Significant Terrestrial Fauna		Conservation Status	Occurrence
Species	Common Name		
Mammals			
<i>Pseudocheirus occidentalis</i>	Western Ringtail Possum	Critically Endangered under EPBC Act and BC Act	Confirmed



Conservation Significant Terrestrial Fauna				Conservation Status	Occurrence
Species	Common Name				
<i>Phascogale tapoatafa</i>	Wambenger Phascogale	Brush-tailed		Conservation dependent fauna under BC Act	Confirmed
<i>Isoodon fusciventer</i>	<i>obesulus</i>	Quenda		Priority 4	Confirmed
<i>Notamacropus irma</i>		Western Brush Wallaby		Priority 4	Likely
Birds					
<i>Zanda baudinii</i>		Baudin's Black Cockatoo		Endangered under EPBC Act and BC Act	Confirmed
<i>Zanda latirostris</i>		Carnaby's Black Cockatoo		Endangered under EPBC Act and BC Act	Confirmed
<i>Calyptorhynchus naso</i>	<i>banksii</i>	Forest Red-tailed Black Cockatoo		Vulnerable under EPBC Act and BC Act	Likely
<i>Ninox connivens connivens</i>		Barking Owl		Priority 3	Likely
Reptiles					
<i>Ctenotus ora</i>		Coastal Plains Skink		Priority 3	Confirmed


Conservation Significant Fauna Habitat


A total of seven broad fauna habitat types¹ were mapped across the Development Envelope (refer Table 1-4 and Figure 1-3).

¹ Please note the fauna habitat mapping was updated as a result of vegetation mapping reconciliation that occurred as part of ERD drafting.



Table 1-4: Broad fauna habitat types occurring within the Development Envelope (Biologic 2024a)


Habitat Type	Description	Corresponding vegetation unit mapping code	Conservation significance species	Photo	Extent within Development Envelope (ha)	% of Development Envelope
<i>Kunzea</i> and <i>Melaleuca</i> Closed Shrubland	Closed shrubland <i>Kunzea ciliata</i> and <i>Spyridium globulosum</i> over low open shrubland <i>Eutaxia myrtifolia</i> over sparse sedgeland over low sparse herbland as well as closed shrubland <i>Melaleuca lanceolata</i> and <i>Kunzea ciliata</i> over occasional grasses and herbs on a hillslope of granite outcropping	KcSg, MIKc	quenda - primary breeding, foraging and dispersal		11.63	28%
Open Peppermint Forest	Low open forest <i>Agonis flexuosa</i> over fernland <i>Pteridium esculentum</i> subsp. <i>esculentum</i> over open herbland mixed non-native species such as <i>Lysimachia arvensis</i> and <i>Asparagus asparagoides</i> on a sandy hillslope	AfPe	western ringtail possum – primary breeding, foraging and dispersal habitat Black Cockatoos – secondary roosting habitat Baudin’s - low quality foraging habitat wambenger brush-tailed phascogale - primary breeding, foraging and dispersal habitat quenda - foraging and dispersal habitat		8.76	21%

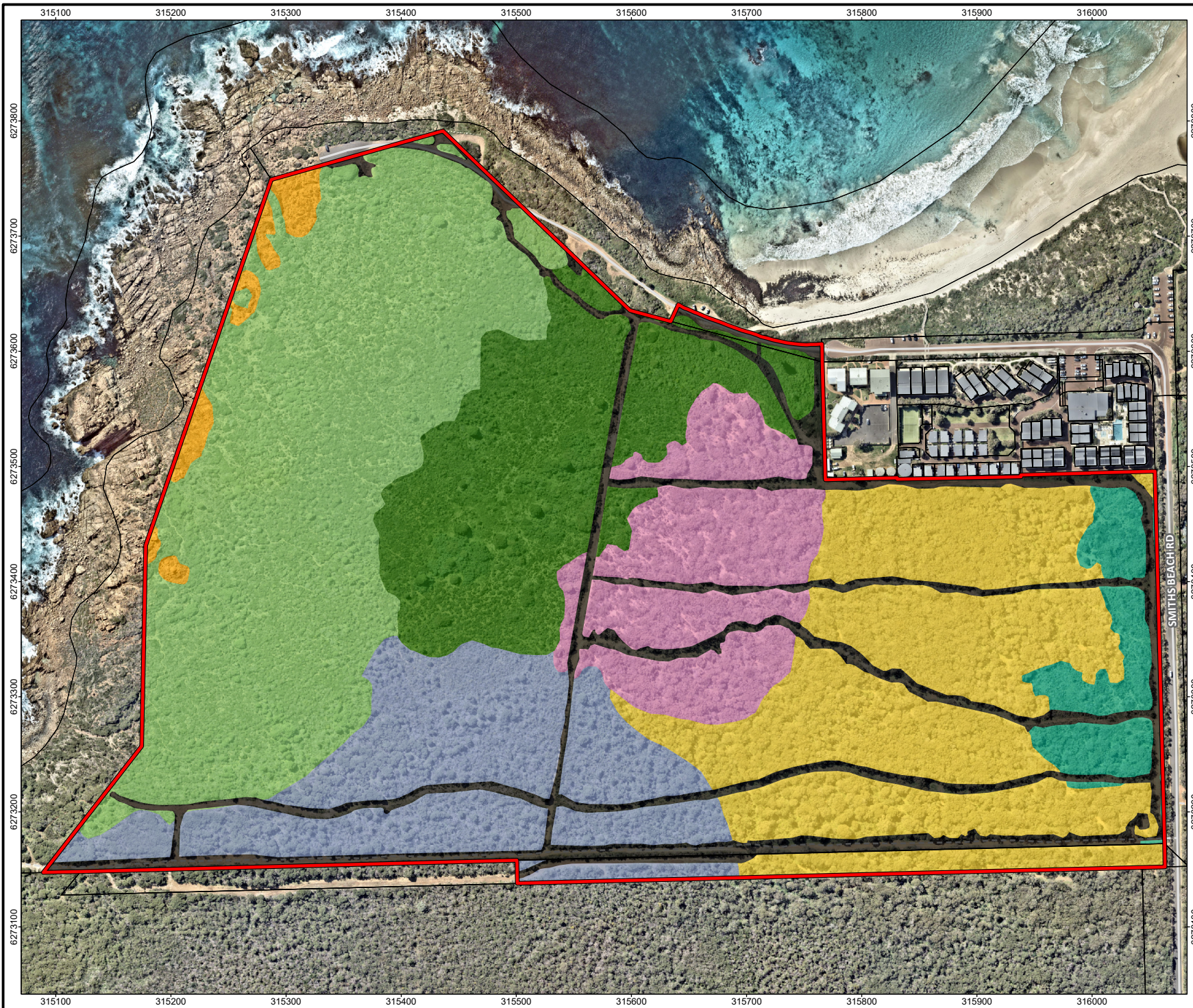
Habitat Type	Description	Corresponding vegetation unit mapping code	Conservation significance species	Photo	Extent within Development Envelope (ha)	% of Development Envelope
<i>Melaleuca</i> over <i>Hakea</i> Shrubland	Low woodland to low open forest <i>Melaleuca huegelii</i> , <i>M. lanceolata</i> and <i>Guichenotia ledifolia</i> over tall open shrubland <i>Hakea oleifolia</i> over shrubland <i>Hibbertia cuneiformis</i> over low open herbland <i>Stylidium adnatum</i> on a sandy midslopes. Progresses westward to a low closed forest <i>Melaleuca lanceolata</i> over sparse shrubland <i>Melaleuca systema</i> and <i>Spyridium globulosum</i> over low open herbland <i>Dianella revoluta</i> var. <i>revoluta</i> over low open sedgeland <i>Lepidosperma</i> spp. (understorey absent in areas of dense canopy coverage)	MhGI, MIDr	<p>Baudin's – primary foraging habitat (High Quality)</p> <p>Carnaby's – primary foraging habitat (Quality)</p> <p>quenda - primary breeding, foraging and dispersal</p> <p>Ctenotus ora - primary breeding, foraging and dispersal</p> <p>barking owl – primary foraging and dispersal</p>		5.69	14%

Habitat Type	Description	Corresponding vegetation unit mapping code	Conservation significance species	Photo	Extent within Development Envelope (ha)	% of Development Envelope
Open Coastal Shrubland	<p>Variable Shrubland progressing from a granitic stony plain to a sandy plain (southward) on a hillslope. Vegetation comprises distinct associations of <i>Acacia saligna</i> over low open shrubland <i>Hibbertia hypericoides</i> over grassland non-native species, shrubland <i>Acacia saligna</i> and <i>Dodonaea ceratocarpa</i> over low herbland <i>Trachymene pilosa</i> over low sparse grassland <i>Rytidosperma occidentale</i>, shrubland <i>Allocasuarina humilis</i> over low sparse herbland over low sparse grassland <i>Austrostipa mollis</i> and <i>Rytidosperma occidentale</i> over low open rushland <i>Hypolaena exsulca</i> and low open forest <i>Nuytsia floribunda</i> and <i>Corymbia calophylla</i> over open shrubland <i>Xanthorrhoea preissii</i> over low open mixed herbland over low open grassland native and non-native species</p>	<p>AsHh, AsDc, NfCcXp, AhHe</p>	<p>Baudin's - low quality foraging habitat</p> <p>quenda - primary breeding, foraging and dispersal</p> <p>Ctenotus ora - primary breeding, foraging and dispersal</p>		5.81	14%

Habitat Type	Description	Corresponding vegetation unit mapping code	Conservation significance species	Photo	Extent within Development Envelope (ha)	% of Development Envelope
Open Forest	<i>Banksia attenuata</i> and occasional <i>Agonis flexuosa</i> over open shrubland <i>Macrozamia riedlei</i> and <i>Xanthorrhoea preissii</i> over open mixed herbland on a sandy hillslope	BmMrXp	<p>western ringtail possum – secondary breeding, foraging and dispersal habitat</p> <p>Black Cockatoos – potential breeding habitat and secondary roosting habitat</p> <p>Baudin’s and Carnaby’s primary foraging habitat (Very High and High Quality respectively)</p> <p>wambenger brush-tailed phascogale - primary breeding, foraging and dispersal habitat</p> <p>quenda - primary breeding, foraging and dispersal habitat</p> <p>western brush wallaby - primary breeding, foraging and dispersal habitat</p> <p>Ctenotus ora - primary breeding, foraging and dispersal habitat</p>		4.12	10%

Habitat Type	Description	Corresponding vegetation unit mapping code	Conservation significance species	Photo	Extent within Development Envelope (ha)	% of Development Envelope
Closed Low Marri Forest	Low forest <i>Corymbia calophylla</i> over open shrubland <i>Xanthorrhoea preissii</i> and over low shrubland <i>Hibbertia hypericoides</i> over sparse low herbland <i>Scaevola calliptera</i> surrounded by Shrubland <i>Darwinia citriodora</i> and <i>Dodonaea ceratocarpa</i> over low sedgeland <i>Lepidosperma spp.</i> over low open grassland of native and non-native species over low open herbland <i>Crassula spp.</i> on a sandy hillslope	CcHh, DciDcL	western ringtail possum – secondary breeding, foraging and dispersal Black Cockatoos – Potential breeding habitat, primary foraging habitat and secondary roosting habitat wambenger brush-tailed phascogale - primary foraging and dispersal		1.52	4%
Rocky Outcrop	Granite outcropping and boulders with low open shrubland <i>Kunzea ciliata</i> and <i>Darwinia citriodora</i> over low sparse herbland <i>Stypandra glauca</i> over low sparse grassland <i>Poa poiformis</i> on granite	KcDcPp			0.52	1%

Habitat Type	Description	Corresponding vegetation unit mapping code	Conservation significance species	Photo	Extent within Development Envelope (ha)	% of Development Envelope
Cleared/Disturbed	No Native Vegetation.	-			3.74	9%



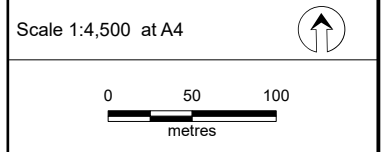
- Legend**
- Development envelope
 - Cadastral boundary (LGATE-002)
 - Broad fauna habitat**
 - Closed Low Marri Forest surrounded by open shrubland areas
 - Kunzea and Melaleuca Closed Shrubland
 - Melaleuca over Hakea Shrubland
 - Open Banksia Forest
 - Open Coastal Shrubland
 - Open Peppermint Forest
 - Rocky Outcrop
 - Cleared/ Disturbed
 - Roads (LGATE-195)**
 - Highway
 - Major road
 - Minor road
 - Track



Job No: 65771

Client: Smiths 2014 Pty Ltd

Version: A	Date: 30/05/2025
Drawn By: bsunderland	Checked By: RM



Coord. Sys. GDA2020 MGA Zone 50

Lot 4131 Smiths Beach Road Yallingup, WA

FAUNA HABITAT

FIGURE 1-3

1.4.3 Key Assumptions and Uncertainties

The key assumptions and uncertainties associated with this CSFMP include:

- All significant direct and indirect impacts on conservation significant fauna resulting from the Proposal have been identified;
- Existing cleared areas within the Development Envelope are assumed not to contain habitat or known records of conservation significant species;
- Direct impacts on fauna during construction are limited to habitat loss, habitat fragmentation and mortality as a result of clearing and vehicle movement;
- The field surveys, conducted by qualified organisations and individuals experienced with the relevant fauna taxa, providing sufficient information to confirm the presence of significant fauna taxa within the Development Envelope and its surroundings;
- The relevant studies and surveys have accurately recorded the presence of all conservation significant fauna species within the Development Envelope;
- The majority of the identified conservation significant fauna species (excluding Western Ringtail Possum) are mobile with relatively large home ranges, indicating that point location records represent the use of available foraging and breeding habitat rather than fixed, permanent locations;
- Based on local and regional records, the extent of potentially suitable breeding and foraging habitat for the identified conservation significant fauna species is expected to extend beyond the Development Envelope;
- Staged directional clearing using a “shepherding” approach will allow Western Ringtail Possum to disperse naturally into retained vegetation patches and/or the adjacent National Park with little to no handling resulting in a minimised disturbance to the species;
- Where possible, strategic timing to avoid peak population periods for conservation significant species will allow impacts to be minimised;
- Impact on local wildlife due to an increase in vehicle movement during and post construction will be minimised through traffic control measures.

1.4.4 Risk-based Management Approach

Management targets and corresponding actions have been formulated using a qualitative risk-based assessment detailed below, incorporating the mitigation hierarchy to minimize impacts on critical environmental factors as low as reasonably practicable (ALARP). These management actions are prioritised according to a risk assessment that takes into account survey results and the potential impacts of the Proposal during construction and operational phases on conservation significant fauna identified in Section 1.4.2.1. The risk assessment can be found at Appendix A of this document.

1.4.5 Rationale for Choice of Indicators and Management Actions

The outcome-based provisions formulated with respect to Western Ringtail Possum require management actions in order to achieve the outcomes; they are therefore hybrid provisions. For each provision, the management actions are described and justified, followed by an explanation of the rationale behind the choice of indicators.

The Western Ringtail Possum is classed as Critically Endangered and is considered relatively easy to monitor, so this species has been chosen as the key indicator species for the site. Management actions have been designed to minimise impacts to the Western Ringtail Possum, as well as other conservation significant species, as much as possible given the clearing requirements for bushfire management.

1.4.5.1 Indicators

Western Ringtail Possum

Western Ringtail Possums have been observed within and adjacent to the Development Envelope during several surveys undertaken for this Proposal.

According to Thompson and Thompson (2009), in situ management of the Western Ringtail Possum within development areas is likely to yield better conservation outcomes than translocating individuals to other areas of remnant vegetation. This approach is preferred because Western Ringtail Possums seem to adapt relatively well to developed environments, whereas translocation efforts often result in poor survival rates (Bamford 2024). Based on this, Western Ringtail Possum management approach during clearing operations will include pre-clearing surveys and relocation of natural dreys (while unoccupied) and active monitoring of Western Ringtail Possums during clearing. Sensitive and staged clearing practices, including the use of a "shepherding" method, will be employed to guide Western Ringtail Possums towards retained patches of habitat. By allowing Western Ringtail Possums to relocate to adjacent habitats on their own, it will eliminate the need for translocation and minimise animal handling, thereby significantly reducing the risk of undue stress to individuals.

Given the conservation status of Western Ringtail Possum is Critically Endangered, avoiding direct injury and mortality of individuals is a high priority and is achievable through careful management during clearing, construction and operations. Avoidance of 2.11 ha of primary and secondary Western Ringtail Possum habitat will be achieved in POS/conservation lots within the Development Envelope (Figure 1-4), which includes:

- 1.15 ha of habitat within Conservation Lot/POS (Area 2);
- 0.64 ha of habitat within POS (Area 3); and
- 0.32 ha of habitat within POS (Area 4).

As habitat is removed from other areas of the Development Envelope, individuals are likely to be displaced into surrounding habitat resulting in an increase in the number of animals in the surrounding areas. It is considered likely that during the clearing and construction phases of the Proposal, the abundance of Western Ringtail Possums within the Development Envelope will decline due to a reduction in resource availability and therefore a reduction in carrying capacity. Therefore,

several hybrid provisions have been formulated specific to Western Ringtail Possum, as detailed in Section 1.4.1. To achieve these outcomes, trigger criteria have been identified in Table 2-1. These act as an early warning to initiate mitigation and threshold criteria, and mark a limit that, if crossed, indicates that a significant and possibly harmful impact has occurred, requiring immediate remediation. The primary indicators for achieving the desired environmental outcomes for conservation significant fauna, including Western Ringtail Possums, will include monitoring data, such as observed activity and individual counts, alongside incident reports and records of interactions between Proposal activities and fauna within the Development Envelope.

Bamford (2024) have recommended a comprehensive, site-specific survey to help inform the mitigation measures for Western Ringtail Possum population before development begins. This survey will involve mapping significant trees, canopy corridors, existing dreys (nests), and current Western Ringtail Possum activity to establish baseline data, which will support the assessment of trigger and threshold criteria outlined in this plan. The survey will include day inspections to identify critical habitat features like hollows and canopy connectivity, as well as night-time spotlighting to detect active Western Ringtail Possum and hidden dreys that could be retained in areas where partial modification is proposed to occur. These assessments will aid the for planning of the placement of possum infrastructure, such as bridges and artificial dreys in areas where partial modification of possum habitat is achievable. The possum bridge is subject to additional design and the level of connected habitat able to be achieved in the partial modification scenario.

A 'Western Ringtail Possum Habitat Conservation and Connectivity Zone' has been established (Figure 1-5) around the proposed campground site given the known concentration of possums inhabiting this area. The establishment of this zone recognises this area as key habitat for the local possum population and prioritises the retention of canopy cover (40%; Figure 1-5 provides indicative modelling of expected canopy cover), together with an expanded network of possum bridges to enhance habitat connectivity. The campground is a low impact, complementary land use selected specifically to suit this sensitive environmental setting. Design minimises disturbance through a focus on retention of primary Western Ringtail Possum habitat and maintenance of canopy connectivity to maintain Western Ringtail Possum movement pathways. Restricting vehicles and confining visitors within this zone to designated paths reduces mortality risk, limits disturbance, prevents habitat damage and maintains habitat continuity for Western Ringtail Possums. Further to this, at least 1 ha of primary and secondary habitat will be retained within partially modified across the development footprint, particularly within the Eastern Holiday Homes and the Park Spine to support ongoing habitat connectivity. The artificial bridges to be installed will provide a connection from the Western Ringtail Possum Habitat Conservation and Connectivity Zone, through the Development Envelope and through to the National Park at both the south and east.

Where natural ground cover is limited, the installation of artificial shelters, such as logs, rocks, and purpose-built wildlife shelters will also be undertaken to provide refuges for small ground dwelling fauna, including any Western Ringtail Possum that may have come to ground. These structures mimic natural shelters, offering protection from predators and extreme weather. They are particularly beneficial in areas where bushfire risk reduction efforts have removed natural ground cover.

Importantly, the drey and possum survey will be repeated just before clearing to confirm up-to-date Western Ringtail Possum locations, as possums may move or create new dreys over time. Each tree holding a possum will be flagged to ensure that clearing of these trees is carried out under close supervision of a fauna specialist. The sequential clearing approach will allow Western Ringtail Possums to gradually shift to nearby refuges including retained habitat within the Development Envelope and/or the Adjacent National Park to the south. Any artificial dreys, bridges, and other infrastructure that is to be installed will be done so in advance of clearing.

Before works commence, it is proposed that the Proponent will develop landscaping and revegetation plans, detailing both vegetation and significant trees to be retained and new plantings, aligned with the Vegetation Management Plan (VMP), Bushfire Management Plan (BMP), and Visual

Landscaping Amenity report. These plans will guide initial landscaping and revegetation works and be maintained as per the VMP requirements. These plans will also help guide the placement of possum bridges by mapping out the significant trees and vegetation patches within the Development Envelope that are suitable for the species and will be retained under the partial modification scenario.

The VMP will include baseline vegetation studies, land-clearing procedures, a rehabilitation plan, bushfire management and monitoring, along with training and responsibility designations for key stakeholders, including the Construction Manager, Community Corporation, and property operators. Upon completion of clearing and construction, the landscaping plans will be updated to an “as-constructed” version, reflecting final vegetation locations. Elements of this CSFMP are intended to guide the preparation of these plans as detailed in Table 2-1 and Table 2-2 below.

An assessment of the Western Ringtail Possum Recovery Plan (DPaW 2017a) and how this CSFMP addresses key objectives and relevant actions targeting identified threatening processes is provided in Appendix E.

Monitoring Program for Western Ringtail Possums

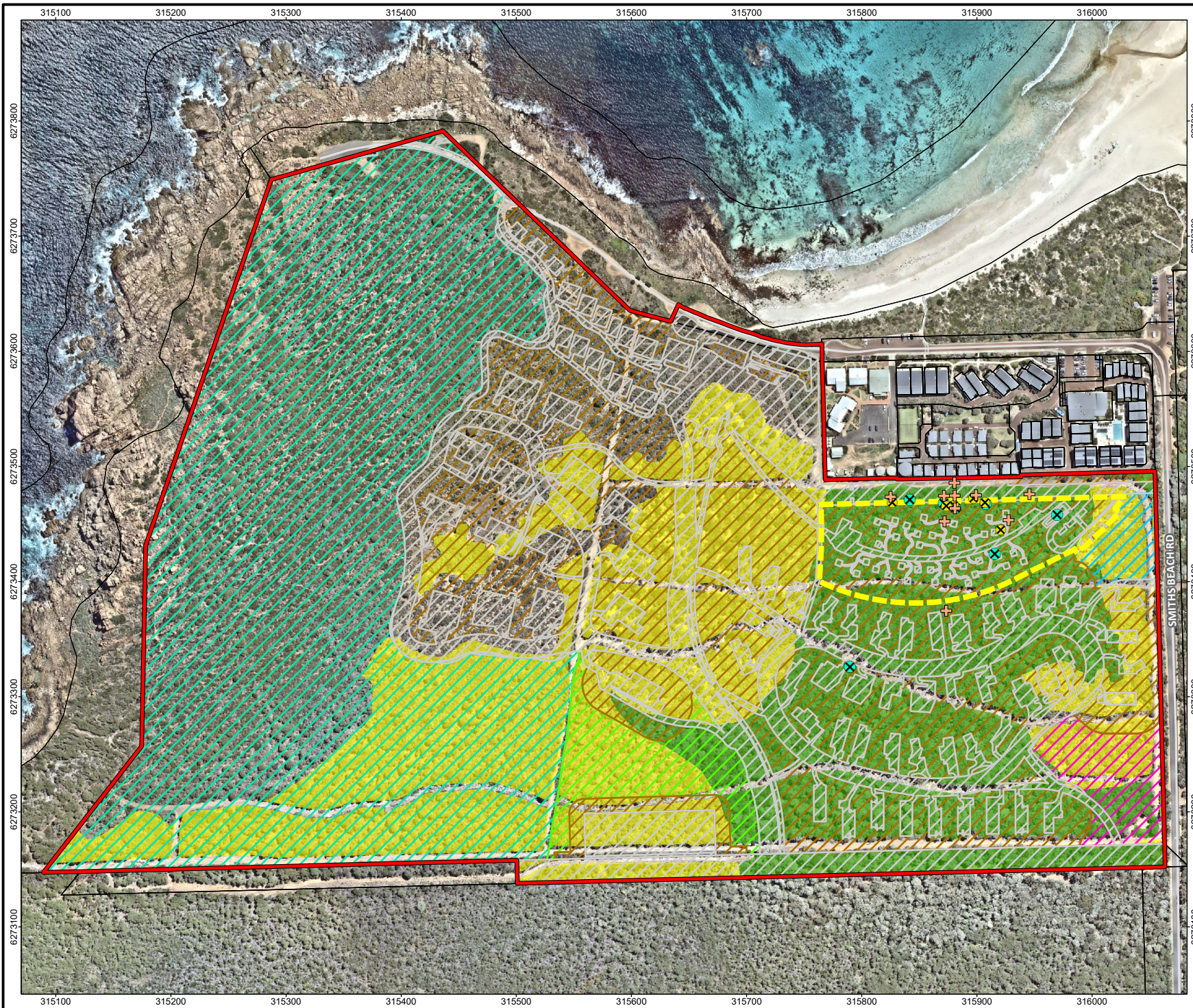
Ongoing monitoring within the Development Envelope and within a 200m buffer in adjacent vegetation has been proposed to effectively manage and adapt to potential impacts on the Western Ringtail Possum. Baseline surveys conducted prior to and following, the clearing and construction phases will inform a detailed, adaptive monitoring program grounded in accurate data. A comparable project, cited in Bamford (2024), applied a comprehensive monitoring approach for Western Ringtail Possum that has served as a model for this Proposal. In that project, population monitoring was conducted every two months during the first year to assess short-term impacts, transitioning to biannual monitoring over the following nine years to establish long-term population trends.

Monitoring activities included systematic checks of all natural and artificial dreys to confirm occupancy using binoculars or a pole camera. Opportunistic sightings of individual Western Ringtail Possums, along with new natural dreys, were also recorded. Additionally, possum bridges were monitored with motion-sensitive cameras to confirm usage, supplemented by opportunistic searches for Western Ringtail Possum scats below these structures. A similar methodology for this Proposal will ensure comprehensive monitoring across the Development Envelope.

The monitoring regime will also include documentation of any adverse events, such as Western Ringtail Possum mortality from predation or vehicle collisions, as well as instances of human-wildlife conflict, such as possums entering residential areas or interactions with people or pets. This monitoring framework will be essential in assessing the effectiveness of mitigation measures and enabling adaptive management adjustments as required. Details of the proposed monitoring program are included in Appendix C.

1.4.5.2 Management Actions

The objective-based provisions established in this CSFMP are designed to ensure that impacts on conservation significant fauna, including Western Ringtail Possum, are effectively minimised and mitigated to the maximum degree possible. As mentioned in Section 1.4.5 the outcome-based provisions require management actions in order to achieve the outcomes; they are therefore hybrid provisions.



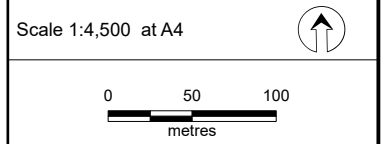
- Legend**
- Development envelope
 - Proposed full clearing
 - Proposed modified areas
 - Area to be placed into conservation (Area 1)
 - Public Open Space/Conservation Lot (Area 2)
 - Public Open Space (Area 3)
 - Public Open Space (Area 4)
 - Cadastral boundary (LGATE-002)
 - Western Ringtail Possum habitat category (Bamford Consulting Ecologists, 2024)
 - Primary breeding, foraging and dispersal habitat
 - Secondary foraging and dispersal habitat
 - WRP Habitat Conservation and Connectivity Zone
 - Roads (LGATE-195)
 - Minor road
 - Track
 - Western Ringtail Possum (Biologic)
 - + Drey
 - Western Ringtail Possum (Bamford Consulting Ecologists)
 - x Drey
 - x Maternity drey



Job No: 59550

Client: Smiths 2014 Pty Ltd

Version: R011	Date: 8/12/2025
Drawn By: bsunderland	Checked By: RM

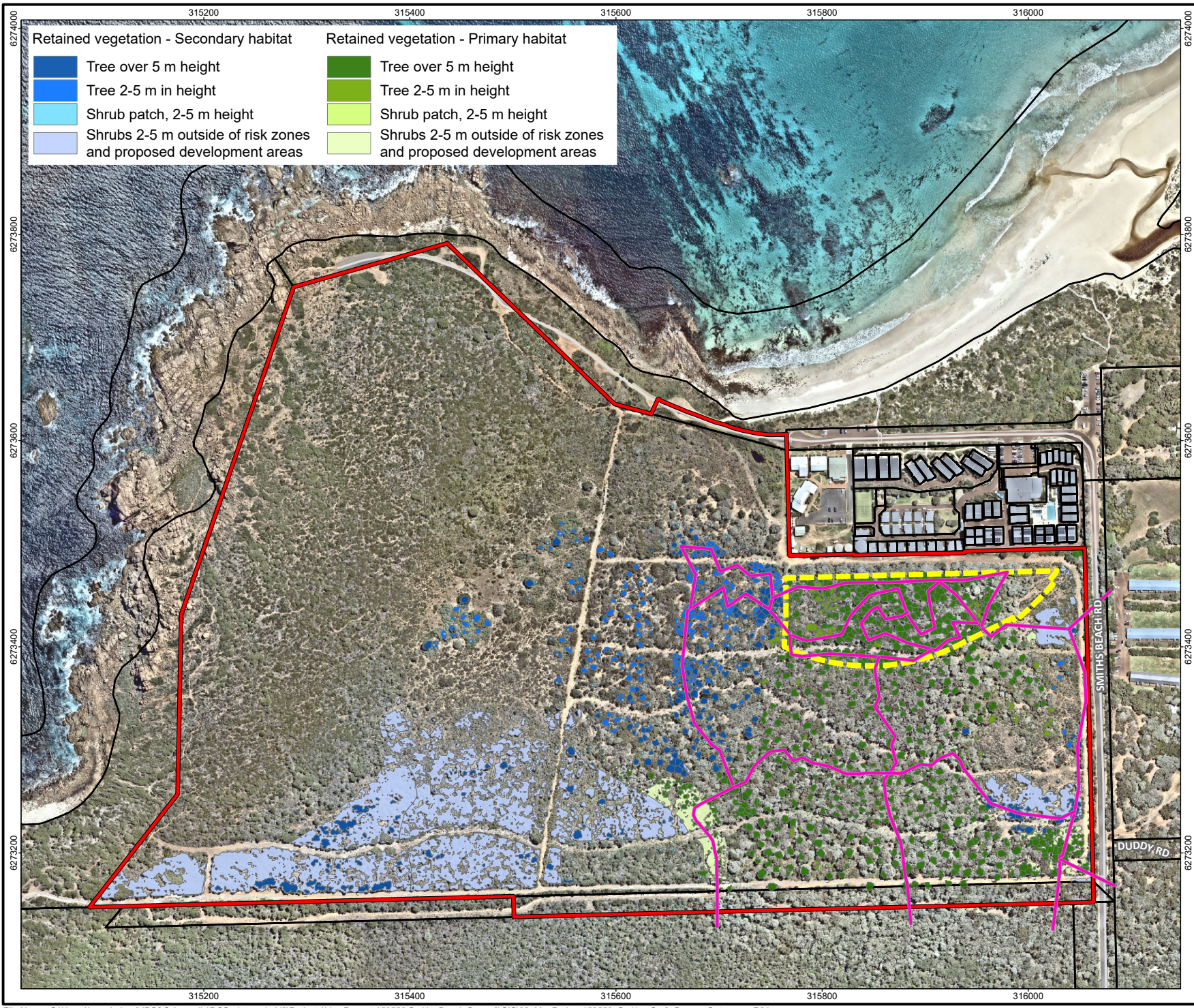


Coord. Sys. GDA2020 MGA Zone 50

**Lot 4131 Smiths Beach Road
Yallingup, WA**

**RETAINED WESTERN RINGTAIL
POSSUM HABITAT IN POS/
CONSERVATION LOTS**

FIGURE 1.4



Retained vegetation - Secondary habitat		Retained vegetation - Primary habitat	
	Tree over 5 m height		Tree over 5 m height
	Tree 2-5 m in height		Tree 2-5 m in height
	Shrub patch, 2-5 m height		Shrub patch, 2-5 m height
	Shrubs 2-5 m outside of risk zones and proposed development areas		Shrubs 2-5 m outside of risk zones and proposed development areas

Legend

- Development envelope
- Cadastral boundary (LGATE-002)
- WRP Habitat Conservation and Connectivity Zone
- Possum bridge
- Roads (LGATE-195)
 - Minor road
 - Track



Job No: 59550
 Client: Smiths 2014 Pty Ltd
 Version: R011 Date: 8/12/2025
 Drawn By: bsunderland Checked By: RM

Scale 1:5,000 at A4

Coord. Sys. GDA2020 MGA Zone 50

**Lot 4131 Smiths Beach Road
 Yallingup, WA**

**WESTERN RINGTAIL POSSUM
 CONSERVATION AND CONNECTIVITY
 ZONE AND INDICATIVE POSSUM
 BRIDGE NETWORK.**

FIGURE 1.5

2. CSFMP Provisions

Table 2-1 describes the outcome-based provisions proposed for the Proposal. As these are hybrid-outcome based provisions, they require management actions to be implemented, these are presented in Table 2-2. Please note that the proposed trigger and threshold criteria are currently preliminary and may be refined as more accurate data becomes available. A Western Ringtail Possum survey, to be conducted pre-clearing, will provide essential insights, allowing us to adjust these criteria to more precisely reflect the local population dynamics and habitat conditions. This adaptive approach will help ensure that the trigger and threshold levels remain effective in guiding conservation efforts for the Western Ringtail Possum.

2.1 Outcome-based Provisions

Table 2-1: Outcome-based Provisions

EPA Factor and Objective	Terrestrial Fauna: To protect terrestrial fauna so that biological diversity and ecological integrity are maintained				
Outcomes	<ol style="list-style-type: none"> 2.11 ha of Western Ringtail Possum habitat within POS/Conservation lots will be retained to support possum use, movement and connectivity within the Development Envelope. There is no direct injury or mortality of Western Ringtail Possum individuals during clearing or construction. A 1.79 ha Western Ringtail Possum Habitat Conservation and Connectivity Zone will be established with 40% canopy cover retained (0.72ha) and managed so that Western Ringtail Possum habitat quality, canopy connectivity and movement pathways within the zone are maintained. The Proponent must maintain connected habitat within the Development Envelope at a scale and configuration sufficient to ensure ongoing accessibility for Western Ringtail Possums between adjacent National Park and areas of retained habitat in the Development Envelope. For each drey removed within the Development Envelope, a replacement drey must be installed within a location to be agreed upon in consultation with DBCA. This number must be maintained for a period of 10 years through ongoing maintenance or replacement as necessary. 				
Key Environmental Values	Conservation significant terrestrial fauna species and their habitats, with a particular focus on the Western Ringtail Possum and its habitat. The proposed mitigation measures are also expected to provide broader benefits for other native fauna, including other conservation significant species.				
Key Impacts and Risks	<ul style="list-style-type: none"> Direct impact due to loss of terrestrial fauna habitat from vegetation clearing; Direct impact through mortality or injury during clearing (e.g. vehicle/machinery strike, injury/death from being crushed by vegetation); Indirect impacts from habitat fragmentation and degradation including loss of ecological connectivity; Indirect impacts from increased abundance of introduced fauna species (including pets) which may result in increased predation of Western Ringtail Possum and other native fauna; and Indirect impacts due to increased predation caused by change in behaviour of Western Ringtail Possum (coming to ground due to habitat loss) 				
Indicators	Response Actions	Timing / Frequency	Monitoring	Responsibility	Reporting
Outcome 1: 2.11 ha of Western Ringtail Possum habitat within POS/Conservation lots will be retained to support possum use, movement and connectivity within the Development Envelope.					
Trigger criteria: Near-misses ² involving Western Ringtail Possum during clearing and construction.	<ul style="list-style-type: none"> Immediately halt clearing or construction activities in the area of the near-miss to assess the situation. Conduct a thorough investigation to determine the cause of the near-miss and assess any further potential risks to fauna. If a Western Ringtail Possum individual has come to ground during clearing, halt clearing activities until the animal can be confirmed to have returned to the canopy, or until the following day (if the animal cannot be located). If a Western Ringtail Possum comes to ground during clearing and construction, record the sighting as per the incident/report log. Implement additional protective measures (e.g., increased fauna spotters, machinery speed reduction or temporary exclusion zones, feral animal control) 	Ongoing during clearing and construction	Indicator: <ul style="list-style-type: none"> Frequency of near-misses/ injury or mortality. Cause of near-misses/ / injury or mortality. Proximity to fauna habitats. Fauna movement pattern. Response time and effectiveness. Methodology for data collection and analysis:	Project Manager/ Fauna Specialist.	<ul style="list-style-type: none"> Induction and training records. Inspection records. Incident reporting system. Monitoring Reports. Annual compliance reporting.

² A near-miss is defined as a situation or event during which injury or mortality could potentially have occurred to a WRP individual, but injury or mortality did not actually occur. This may include WRP being present on roads in the presence of vehicular traffic, WRP coming to ground and hiding under debris or equipment during clearing, WRP almost being injured/killed during clearing activities, WRP being chased/attacked by introduced predator (fox, cat, dog).

Indicators	Response Actions	Timing / Frequency	Monitoring	Responsibility	Reporting
	<ul style="list-style-type: none"> During clearing, reduce the area limit for clearing allowed to allow more time for fauna to relocate. Review and update fauna management protocols to prevent further near-misses. Implement and enforce reduced speed limits in high-risk areas, updating the traffic management plan accordingly. Conduct wildlife safety training for all staff and contractors, with regular refresher courses to ensure adherence to fauna protection protocols. 		<ul style="list-style-type: none"> Monitoring program detailed in Appendix C. This methodology will be refined in consultation with suitably qualified fauna expert and will also take into consideration optimal timing for monitoring. Visual observation by fauna spotters, contractors and other personnel. Incident record/log (including details of sightings of Western Ringtail Possum on ground, sightings of introduced predators and incidents involving Western Ringtail Possum). 		
<p>Threshold Criteria: Injury or mortality of Western Ringtail Possum attributable to Proposal activities (including direct injury or mortality via vehicle/machinery strike/actions of clearing, and indirect injury or mortality due to increased abundance of predators or change in behaviour of Western Ringtail Possums (coming to ground)).</p>	<ul style="list-style-type: none"> Halt all clearing and construction activities immediately in the affected area to assess and manage the situation. If injury occurs to a Western Ringtail Possum individual, contact local carer and transport individual into care as soon as possible. Investigate the cause of injury or mortality and report to relevant authorities (e.g., environmental regulators, species conservation programs). Implement additional mitigation measures, including adjusting work practices, increasing fauna monitoring, or modifying work schedules. Develop and implement an incident response plan, which may include fauna relocation or rehabilitation. Conduct a review of the environmental management plan and update it to reflect new findings and measures to prevent further occurrences. Reassess speed limits or impose further restrictions if needed, including temporary road closures or additional signage during high-risk periods. Reduce the rate of clearing to ensure appropriate management of fauna is practical and fauna has time to relocate (overnight if necessary). Review and update training programs if incidents persist and conduct compliance audits to ensure all fauna management measures are being implemented. 		<p>Location: Development Envelope.</p>		

Outcome 3: A 1.79 ha Western Ringtail Possum Habitat Conservation and Connectivity Zone will be established with 40% canopy cover retained (0.72ha) and managed so that Western Ringtail Possum habitat quality, canopy connectivity and movement pathways within the zone are maintained.

<p>Trigger criteria: Canopy cover within the Western Ringtail Possum Habitat Conservation and Connectivity Zone is at 40% in any monitoring period and/or identified canopy connection or possum bridge is found to be damaged, disconnected, unsafe or not functionally connected.</p>	<ul style="list-style-type: none"> Investigate the cause of canopy loss or connectivity failure, including site inspection and review of recent disturbance activities. Restrict any activities that could further impact canopy retention or connectivity until corrective actions are identified. Repair, reposition or replace damaged possum bridges or canopy connections where required. Implement interim protective measures (e.g. temporary access restrictions, fencing, exclusion zones or increased supervision within sensitive areas). Review campground operations (visitor access, vehicle use, maintenance practices) to identify any contributing factors. Update site management protocols and maintenance schedules to prevent recurrence. Document incidents and management actions in the environmental incident and monitoring register. 	<p>During clearing</p> <ul style="list-style-type: none"> Amount of connected habitat remaining. Frequency of use of possum bridges and condition of possum bridges to be assessed monthly during clearing (until such point as no more vegetation will be removed, or until the trigger or threshold criterion is reached). 	<p>Indicator</p> <ul style="list-style-type: none"> Amount of connected habitat available within Western Ringtail Possum Habitat Conservation and Connectivity Zone. Number of Western Ringtail Possums sighted during regular systematic counts. Density of Western Ringtail Possums in adjacent remnant vegetation (e.g. 200m buffer). Frequency of Western Ringtail Possum sightings along possum bridges. Corridor condition assessment (i.e., possum bridge condition). Assessment of condition of retained and artificial dreys. Assessment of condition of above-ground water sources. Number of predator sightings. 	Site Supervisor/ Project Manager.	Annual Compliance Reporting.
<p>Threshold Criteria: Canopy cover declines to less than 40% within the Western Ringtail Possum Habitat Conservation and Connectivity Zone and/or one or more canopy connections or possum</p>	<ul style="list-style-type: none"> Suspend activities contributing to further canopy disturbance or connectivity loss. Implement canopy restoration works, supplementary planting and/or infrastructure upgrades. Redesign or reconstruct affected connectivity structures, where necessary. Review campground layout and operations to prevent future canopy loss or fragmentation. 	<p>During construction and operations</p> <ul style="list-style-type: none"> Amount of connected habitat remaining. Frequency of use of possum bridges and 	<p>Method for data collection and analysis</p>		

Indicators	Response Actions	Timing / Frequency	Monitoring	Responsibility	Reporting
bridges remains non-functional for more than 10 days.	<ul style="list-style-type: none"> Increase monitoring frequency until full function is restored. 	condition of possum bridges to be assessed every 6 months during construction (unless the trigger or threshold criterion is reached).	<ul style="list-style-type: none"> 'Monitoring program detailed in Appendix C. This methodology will be refined in consultation with suitably qualified fauna expert and relevant regulatory bodies which will also take into consideration optimal timing for monitoring. Recordings from cameras installed along possum bridges will be used to monitor frequency of their use by possums. Incident/record log used to monitor sightings of predator species. <p>Location of monitoring Entire Development Envelope, including Possum bridges and adjacent remnant vegetation as detailed in Appendix C.</p>		

Outcome 4: The Proponent must maintain connected habitat within the Development Envelope at a scale and configuration sufficient to ensure ongoing accessibility for Western Ringtail Possums between adjacent National Park between areas of retained habitat in the Development Envelope.

<p>Trigger criteria: Monitoring indicates a reduction in the extent or continuity of connected canopy and/or tall shrub habitat that may begin to reduce movement opportunities for Western Ringtail Possums within the Development Envelope or between the Development Envelope and adjacent National Park.</p>	<ul style="list-style-type: none"> Review current and planned vegetation clearing to confirm that connectivity between key habitat areas is being maintained. Assess recent aerial imagery, site monitoring data or available LiDAR mapping to identify areas where canopy gaps are widening or corridor widths are narrowing. Increase the frequency of connectivity monitoring. Investigate opportunities to retain additional vegetation in strategic areas to maintain or enhance canopy links or install additional artificial connectivity structure (possum bridges). Engage an ecologist to verify whether connectivity remains functionally adequate for possum movement and identify any preventative measures. 	<p>During clearing</p> <ul style="list-style-type: none"> Amount of connected habitat remaining. Frequency of use of possum bridges and condition of possum bridges to be assessed monthly during clearing (until such point as no more vegetation will be removed, or until the trigger or threshold criterion is reached). 	<p>Indicator</p> <ul style="list-style-type: none"> Amount of connected habitat available within Development Envelope. Number of Western Ringtail Possums sighted during regular systematic counts. Density of Western Ringtail Possums in adjacent remnant vegetation (e.g. 200m buffer). Frequency of Western Ringtail Possum sightings along possum bridges. Corridor condition assessment (i.e., possum bridge condition). Assessment of condition of retained and artificial dreys. Assessment of condition of above-ground water sources. Number of predator sightings. <p>Method for data collection and analysis</p> <ul style="list-style-type: none"> 'Monitoring program detailed in Appendix C. This methodology will be refined in consultation with suitably qualified fauna expert and relevant regulatory bodies which will also take into consideration optimal timing for monitoring. Recordings from cameras installed along possum bridges will be used to monitor frequency of their use by possums. 	Site Supervisor/ Project Manager.	Annual Compliance Reporting.
<p>Threshold Criteria: Monitoring indicates that connected canopy and/or tall shrub habitat has been reduced or fragmented to the extent that connectivity for Western Ringtail Possums between the Development Envelope and adjacent National Park is no longer maintained.</p>	<ul style="list-style-type: none"> Immediately halt any further vegetation clearing or disturbance that may further reduce connectivity. Undertake an ecological assessment to confirm the extent and cause of the loss of connectivity. Implement remedial measures to re-establish functional connectivity (e.g. retain or revegetate linking vegetation, install canopy bridges or glide poles, or other fauna movement structures). Notify the relevant regulatory authority (if required under approval conditions) and provide a management response outlining corrective actions and timeframes. Review and update the VMPs to incorporate additional mitigation measures to prevent recurrence. 	<p>During construction</p> <ul style="list-style-type: none"> Amount of connected habitat remaining. Frequency of use of possum bridges and condition of possum bridges to be assessed every 6 months during construction (unless the trigger or threshold criterion is reached). <p>Long term (during operations):</p>			

Indicators	Response Actions	Timing / Frequency	Monitoring	Responsibility	Reporting
		Monitor condition of bridges annually during operations.	<ul style="list-style-type: none"> Incident/record log used to monitor sightings of predator species. Location of monitoring Entire Development Envelope, including Possum bridges and adjacent remnant vegetation as detailed in Appendix C.		
Outcome 5: For each drey removed³ within the Development Envelope, a replacement drey must be installed within a location to be agreed upon in consultation with DBCA. This number must be maintained for a period of 10 years through ongoing maintenance or replacement as necessary.					
Trigger criteria: Loss of 5 % of total number of dreys to be maintained.	<ul style="list-style-type: none"> Conduct a detailed assessment to identify factors contributing to the loss of dreys. Fix dreys or install additional artificial dreys, as required. Increase monitoring of condition of dreys to monthly. 	During clearing and construction: Monitor condition of dreys every quarterly unless trigger or threshold reached. Long term (during operations): Monitor condition of dreys every 6 months for the first 2 years, then yearly for the remainder of the 10 years.	Indicator <ul style="list-style-type: none"> Condition of retained, relocated, and artificial dreys Method for data collection and analysis <ul style="list-style-type: none"> Visual inspection of dreys to be maintained. Monitoring program detailed in Appendix C. This methodology will be refined in consultation with suitably qualified fauna expert and relevant regulatory bodies which will also take into consideration optimal timing for monitoring. Location of monitoring sites Entire Development Envelope and adjacent remnant vegetation.	Fauna Specialist.	Annual Compliance Reporting.
Threshold Criteria: Loss of 10% of total number of dreys to be maintained.	<ul style="list-style-type: none"> Conduct a detailed assessment to identify factors contributing to the loss of dreys. Fix dreys or install additional artificial dreys, as required. Increase monitoring of condition of dreys to weekly. Investigate alternative designs or attachments for dreys 				

³ The total number of dreys to be maintained will depend on the number removed during clearing. Absolute trigger and threshold criterion levels will be determined once the number of dreys to be maintained is determined.

2.2 Objective-based Provisions

Table 2-2: Objective-based Provisions

EPA Factor and Objective		Terrestrial Fauna: To protect terrestrial fauna so that biological diversity and ecological integrity are maintained.					
Objectives		<ol style="list-style-type: none"> 1. Minimise the risk of injury or mortality to native fauna within the Development Envelope resulting from Proposal activities. <ol style="list-style-type: none"> a. Minimise direct impacts to native fauna from injury or mortality during clearing and construction. b. Minimise indirect impacts to native fauna from predation by introduced predators. 2. Minimise reduction in resource availability for Western Ringtail Possums and other conservation significant fauna as much as possible. <ol style="list-style-type: none"> a. Retain as much Western Ringtail Possum habitat as possible. b. Enhance retained habitat to provide the highest possible resource availability for Western Ringtail Possums and other conservation significant fauna. 3. Maintain and enhance ecological connectivity for native fauna, at both canopy and ground levels, within the Development Envelope and into adjacent National Park. <ol style="list-style-type: none"> a. Provide canopy-level possum bridge connections to adjacent vegetation to the south and the east of the Development Envelope. 4. Avoid and minimise impacts to habitats supporting conservation significant fauna. <ol style="list-style-type: none"> a. Avoid unnecessary clearing of understorey and groundcover vegetation. b. When preparing VMPs, prioritise retention of habitat trees, including large trees, trees with hollows (any size), and species important for black cockatoo and Western Ringtail Possum foraging. c. Ensure campground infrastructure, access arrangements and lighting are designed and operated to minimise disturbance, prevent habitat fragmentation and maintain canopy connectivity within the Western Ringtail Possum Habitat Conservation and Connectivity Management Zone. d. Minimise decline in conservation significant fauna habitat as a result of altered fire regimes from the Proposal. e. Minimise degradation of conservation significant fauna habitat due to the introduction of weeds and/ or dieback as a result of the Proposal. 					
Key Environmental Values		Conservation significant terrestrial fauna species and their habitat.					
Key Impacts and Risks		<ul style="list-style-type: none"> ○ Direct impact due to loss of terrestrial fauna habitat from vegetation clearing; ○ Direct impact through mortality or injury through vehicle/machinery strike; ○ Indirect impacts from habitat fragmentation and degradation including loss of ecological connectivity; ○ Indirect impacts from invasive species including weeds and Phytophthora dieback may potentially damage or remove habitat for fauna; ○ Indirect impacts from increased introduced fauna species which may result in increased competition, habitat degradation and increased predation of native fauna species; and ○ Indirect impacts from altered fire regimes may cause loss of habitat or prevent understorey from re-establishing, allowing spread of weeds. 					
Management Targets	Management Actions	Timing / Frequency	Monitoring	Contingency Action Trigger	Contingency Measures	Responsibility	Reporting
Objective 1: Minimise the risk of injury or mortality to native fauna within the Development Envelope resulting from Proposal activities.							
1a. Minimise direct impacts to native fauna from injury or mortality during clearing and construction.	<ul style="list-style-type: none"> ○ Seven days prior to clearing, conduct a pre-clearance trapping and relocation program to remove ground-dwelling fauna (see Appendix D). ○ Restrict clearing/construction to operating hours (7:00 AM–6:00 PM) ○ Induct all personnel/contractors on environmental responsibilities (operating hours, speed limits). ○ A fauna spotter will be present during clearing and works stopped if fauna sighted until safely relocated. ○ Injured/abandoned/distressed fauna not to be handled by untrained personnel. Contact 	Prior to and during clearing and construction	Indicators <ul style="list-style-type: none"> ○ Clearing or construction activities occurring outside approved operating hours. ○ Vehicles travelling above the approved speed limit ○ Fauna spotted during clearing activities. 	<ul style="list-style-type: none"> ○ Works undertaken outside operating hours. ○ Speeding on site. 	<ul style="list-style-type: none"> ○ The incident is to be immediately reported to the site supervisor. ○ Any injured fauna shall not be handled but observed until a suitably qualified person can attend to the animal. ○ Once the animal has been attended to, investigate the cause of the incident. 	Site supervisor	<ul style="list-style-type: none"> ○ Induction and training records. ○ Daily activity logs. ○ Incident reporting system. ○ Annual compliance reporting.

Management Targets	Management Actions	Timing / Frequency	Monitoring	Contingency Action Trigger	Contingency Measures	Responsibility	Reporting
	<p>wildlife specialist and transport to pre-arranged carer.</p> <ul style="list-style-type: none"> Temporary fencing will be installed around construction fronts to prevent fauna from entering active work areas or dispersing on to roads, reducing the risk of injury or mortality. 		<ul style="list-style-type: none"> Conservation significant fauna mortality or injury from clearing activities and/or vehicle strike. <p>Method</p> <ul style="list-style-type: none"> Daily activity logs. Site inspections. Incident reports. <p>Location</p> <p>Development Envelope.</p>		<ul style="list-style-type: none"> Implement appropriate measures to ensure the incident does not re-occur (e.g., lower site speed limits, undertake additional fauna relocation works, recommunicate operating hours and/or environmental values to personnel). Review effectiveness of the management actions. Communicate outcomes of the incident to the personnel at a toolbox meeting. 		
	<p>Western Ringtail Possum specific management measures:</p> <ul style="list-style-type: none"> Clearing within the Western Ringtail Possum Habitat Conservation and Connectivity Zone will not occur during the identified Western Ringtail Possum peak breeding season as determined in consultation with a suitably qualified fauna specialist based on current scientific information and site-specific observations. Where artificial structures are proposed (e.g., bridges, water sources, dreys) they are to be installed prior to clearing or construction works, allowing fauna to become accustomed to them. Minor, targeted clearing will be permitted only where necessary to facilitate installation of these structures. Within vegetation to be removed, relocate dreys only when unoccupied, and lightly prune surrounding vegetation to encourage Western Ringtail Possums vacate the immediate area. Locate all Western Ringtail Possum individuals prior to clearing. Individuals that have not left the clearing area will need to be shepherded out by expert fauna handler/s. Once Western Ringtail Possum have left, fell trees slowly and check hollows carefully for any undetected Western Ringtail Possums (or other fauna). Ensure suitably trained and experienced fauna handlers are present onsite as spotters during clearing to manage wildlife safely. 	Refer to Outcome 2 and Outcome 3 in Table 2-1.	Refer to Outcome 2 and Outcome 3 in Table 2-1.	Refer to Outcome 2 and Outcome 3 in Table 2-1.	Refer to Outcome 2 and Outcome 3 in Table 2-1.	Refer to Outcome 2 and Outcome 3 in Table 2-1.	Refer to Outcome 2 and Outcome 3 in Table 2-1.

Management Targets	Management Actions	Timing / Frequency	Monitoring	Contingency Action Trigger	Contingency Measures	Responsibility	Reporting
	<ul style="list-style-type: none"> Process felled timber and remove cleared vegetation within the same day to avoid fauna sheltering in piles. Do not stockpile timber or vegetation onsite. Implement a vehicle speed limit of 5–10 km/h within the Development Envelope during clearing and construction. Conduct wildlife safety training for all staff and contractors, with regular refresher courses to ensure adherence to fauna protection protocols. Clearing will be undertaken on a staged basis and Western Ringtail Possums will be encouraged to gradually move into retained pockets of suitable habitat or the adjacent National Park depending on the clearing front and location of possums. 						
1b. Indirect impacts to native fauna from predation by introduced predators will be minimised.	<ul style="list-style-type: none"> All site personnel and contractors to be inducted on environmental responsibilities including the importance of: <ul style="list-style-type: none"> Awareness of high risk of introduced fauna species relevant to the Proposal; Consequences of feeding fauna species (which is prohibited); and Appropriate waste management measures. Cats prohibited across the entire Development Envelope (enforced through Community Title by-laws). Dogs prohibited within the Western Ringtail Possum Habitat Conservation and Connectivity Management Zone. Dogs in Holiday Homes are restricted to secure areas only, under strict by-laws, with no free roaming. In all other precinct areas, dogs must always remain on-leash. 	Pre-clearing and during clearing and construction	Indicator <ul style="list-style-type: none"> Sightings of introduced predators including feral species (cats, foxes) and unrestrained pets. Incidents involving conflict between wildlife and pets. Method <ul style="list-style-type: none"> Visual inspections. Opportunistic sightings. Incident log Location Development Envelope	<ul style="list-style-type: none"> Any confirmed sighting of a feral predator (cat, fox) within the Development Envelope. 	<ul style="list-style-type: none"> Notify site supervisor immediately. Engage a feral animal control specialist and implement feral animal control measures in accordance with a pest management plan (e.g. humane trapping, baiting where permitted, in consultation with DBCA). Investigate and close off potential attractants (e.g. secure waste storage, remove food scraps). Record and report incident in site incident register and include in annual compliance report. 	Site supervisor/Project Manager	<ul style="list-style-type: none"> Annual Compliance Reporting. Incident reporting register.

Management Targets	Management Actions	Timing / Frequency	Monitoring	Contingency Action Trigger	Contingency Measures	Responsibility	Reporting
	<ul style="list-style-type: none"> Coordinate with DBCA to schedule feral pest control in surrounding national park areas prior to construction to support possums potentially leaving the site. 	At least six months prior to clearing.			<ul style="list-style-type: none"> Implement additional pest control measures within the in adjacent National Park as agreed with DBCA. Update monitoring and reporting to reflect any adaptive measures taken in consultation with DBCA. 		
Objective 2: Minimise reduction in resource availability for Western Ringtail Possums and other conservation significant fauna as much as possible.							
2a. Retain as much Western Ringtail Possum habitat as possible.	<ul style="list-style-type: none"> Retention of 40% of canopy coverage consistent with bushfire risk management requirements within the Western Ringtail Possum Habitat Conservation and Connectivity Zone (Figure 1-4). On-ground selection of vegetation to be retained will be undertaken following confirmation of bushfire management requirements. Where practicable, retention will prioritise vegetation providing Western Ringtail Possum habitat and to be planned prior to clearing through preparation of VMPs. 	Refer to Outcome 3 and 4 in Table 2-1.	Refer to Outcome 3 and 4 in Table 2-1.	Refer to Outcome 3 and 4 in Table 2-1.	Refer to Outcome 3 and 4 in Table 2-1.	Refer to Outcome 3 and 4 in Table 2-1.	Refer to Outcome 3 and 4 in Table 2-1.
2b. Enhance retained habitat to provide the highest possible resource availability for Western Ringtail Possums and other conservation significant fauna.	<ul style="list-style-type: none"> Subject to final vegetation retention areas, artificial shelters, such as logs, rocks, and purpose-built wildlife shelters (including artificial dreys) and self-flushing watering points (which are accessible to Western Ringtail Possums), will be installed to provide refuges for small ground dwelling fauna (including the Western Ringtail Possum) that may have come to ground in areas where natural ground cover is limited. These will be installed in known areas of retained vegetation prior to clearing and construction and in landscaping areas once landscaping is complete. 	Prior to clearing and construction.	<p>Indicator Evidence of fauna using artificial shelters and watering points.</p> <p>Method Visual inspection. Motion sensor cameras.</p> <p>Timing Annually after installation.</p> <p>Location Development Envelope.</p>	Low use of shelters.	Add more shelters or adjust placement.	Project Manager	Annual Compliance Reporting.
	<ul style="list-style-type: none"> Vegetation modification within the Western Ringtail Possum Habitat Conservation and Connectivity Zone will prioritise the retention of all active dreys. Particular focus will be given to the carpark area between the existing resort and campground, which will be redesigned to preserve trees containing active dreys wherever feasible. If an active drey cannot be avoided (e.g., within the car park area), works will occur under fauna specialist supervision. 	Refer to Outcome 5 in Table 2-1.	Refer to Outcome 5 in Table 2-1.	Refer to Outcome 5 in Table 2-1.	Refer to Outcome 5 in Table 2-1.	Refer to Outcome 5 in Table 2-1.	Refer to Outcome 5 in Table 2-1.

Management Targets	Management Actions	Timing / Frequency	Monitoring	Contingency Action Trigger	Contingency Measures	Responsibility	Reporting
	<ul style="list-style-type: none"> Identify dreys requiring removal after finalising vegetation retention areas, and determine suitable replacement locations, through natural drey relocation or artificial drey provision in consultation with a fauna specialist and DBCA. No works will occur within an exclusion buffer around active dreys unless approved by a fauna specialist. 						
Objective 3: Maintain and enhance ecological connectivity for native fauna, at both canopy and ground levels, within the Development Envelope and into adjacent National Park.							
3a. Provide canopy-level possum bridge connections within the Development Envelope and to adjacent vegetation to the south and to the east of the Development Envelope.	<ul style="list-style-type: none"> Maximise retention of trees and large shrubs within the constraints of the Proposal, bushfire requirements and in accordance with Appendix B. Locations, dimensions and designs of possum bridge connections will ensure: <ul style="list-style-type: none"> Connectivity is maintained within the Western Ringtail Possum Habitat Conservation and Connectivity Zone and between adjacent vegetation throughout the Development Envelope and to the south and east prior to the commencement of clearing or construction (see indicative bridge network in Figure 1-4). Bridges will be constructed from fire-retardant materials such as kevlar webbing and/or steel cable to maintain habitat connectivity while minimising fire risk. 	Refer to Outcome 3 and 4 in Table 2-1.	Refer to Outcome 3 and 4 in Table 2-1.	Refer to Outcome 3 and 4 in Table 2-1.	Refer to Outcome 3 and 4 in Table 2-1.	Refer to Outcome 3 and 4 in Table 2-1.	Refer to Outcome 3 and 4 in Table 2-1.
Objective 4: Avoid and minimise impacts to habitats supporting conservation significant fauna.							
4a. Avoid unnecessary clearing of understorey and groundcover vegetation.	<ul style="list-style-type: none"> Induct personnel on retention importance and clearing boundaries. Provide GPS coordinates of approved clearing/retention. Demarcate areas before clearing. Prohibit machinery/equipment in retention areas. Keep records of cleared vegetation. 	Induction: before site access Marking: prior to clearing No machinery: during works Recording: post-clearing	Indicator Clearing or unauthorised access in retention areas. Method <ul style="list-style-type: none"> Site inspections. GPS and boundary checks. Location Development Envelope.	Clearing or unauthorised access in retention areas	<ul style="list-style-type: none"> Investigate cause. Re-instate appropriate boundary fencing and signage. Undertake revegetation of area cleared. Review effectiveness of the management action and identify opportunities for improvement. Communicate outcomes of the incident and the boundaries of retained vegetation at a contractor toolbox meeting. Monitor the success of remediation measures. 	Site supervisor	<ul style="list-style-type: none"> Induction/training records. Inspection records. Incident reports. Annual compliance report.

Management Targets	Management Actions	Timing / Frequency	Monitoring	Contingency Action Trigger	Contingency Measures	Responsibility	Reporting
<p>4b. When preparing VMPs, prioritise retention of habitat trees, including large trees, trees with hollows (any size), and species important for Black Cockatoo and Western Ringtail Possum foraging.</p>	<ul style="list-style-type: none"> On-ground selection of vegetation to be retained to be guided by the principles in Appendix B. Identify/flag/fence habitat trees before clearing. Look for retention opportunities at edges of clearing areas. 	Before clearing and during construction.	<p>Indicator Removal of significant habitat trees.</p> <p>Method Pre-works tree identification and mapping (included in VMP)</p> <p>Location Development Envelope</p>	Removal of trees/shrubs identified for retention.	<ul style="list-style-type: none"> Replace with artificial habitat structures or plant suitable species. Review clearing protocols. 	Site supervisor	<ul style="list-style-type: none"> Annual Compliance Report. Compliance reporting associated with VMPs.
<p>4c. Ensure campground infrastructure, access arrangements, signage and lighting are designed and operated to minimise disturbance, prevent habitat fragmentation and maintain canopy connectivity within the Western Ringtail Possum Habitat Conservation and Connectivity Management Zone.</p>	<ul style="list-style-type: none"> Raised boardwalks and clearly defined paths will be constructed to concentrate pedestrian movement and reduce habitat fragmentation. No vehicles permitted within campground area. Low-impact, fauna-sensitive lighting installed within the campground (primarily low-level bollards to minimise spill and avoid canopy illumination). Carpark lighting selected and positioned to shed downward, achieving safe access illumination while minimising off-site spill. Solid light-screening barrier installed where required to block vehicle headlights from entering habitat areas and prevent disturbance. Clear signage within the zone explaining the importance of canopy connectivity. Education material provided to campers discouraging feeding, disturbance or interference with fauna. 	During construction and operations.	<p>Indicator Non-compliant infrastructure, access or lighting within the Western Ringtail Possum Habitat Conservation and Connectivity Management Zone.</p> <p>Method</p> <ul style="list-style-type: none"> Review of lighting layout against approved design drawings. Night-time inspections to verify light intensity, spill and direction. Review of incident and maintenance logs. <p>Location Western Ringtail Possum Habitat Conservation and Connectivity Management Zone and associated carpark areas.</p>	<ul style="list-style-type: none"> Vehicles observed within the campground area. Lighting observed to spill into canopy or habitat areas. Failure or absence of headlight screening barriers where required. 	<ul style="list-style-type: none"> Repair, reposition or replace lighting that causes habitat illumination or off-site spill. Install additional barriers or screening where required. Reinforce vehicle exclusion through signage and physical barriers. Realign paths, boardwalks or fencing to prevent off-track access. 	Project Manager/Campground supervisor.	<ul style="list-style-type: none"> Annual compliance Report.
<p>4d. Minimise decline in conservation significant fauna habitat as a result of altered fire regimes from the Proposal.</p>	<ul style="list-style-type: none"> Smoking permitted in designated smoking areas to have a cease fire unit (or similar) for safe and contained cigarette butt disposal. Spark arrestors will be fitted to mobile equipment with internal combustion engines involved in clearing operations. Clearing operations will not be permitted on days with extreme or catastrophic fire danger risk. Fire-control equipment will be available in fire-risk areas including but not limited to 	Inspect equipment every 6 months during clearing and construction	<p>Indicator Fire incident</p> <p>Method Visual observations and reports.</p> <p>Location Development Envelope.</p>	Fire incident.	<ul style="list-style-type: none"> Investigate cause. Consult with local fire authorities in relation to improvements in fire prevention measures. If fire impacts retained vegetation, implement remedial actions such as post fire weed control or planting with tubestock. 	Site supervisor	<ul style="list-style-type: none"> Induction and training records. Inspection records. Annual Compliance Report.

Management Targets	Management Actions	Timing / Frequency	Monitoring	Contingency Action Trigger	Contingency Measures	Responsibility	Reporting
	<p>hazardous material storage areas, hot works job sites, service trucks.</p> <ul style="list-style-type: none"> ○ An emergency management plan shall be developed and implemented and shall include methods for managing major environmental incidents, including but not limited to fire. ○ Handling of chemicals/fuels shall take place off-site, or at a designated hazardous. ○ Materials storage and handling location (which shall not be located adjacent vegetation to be retained). 				<ul style="list-style-type: none"> ○ Monitor success of any revegetation works, if relevant. ○ Communicate to all personnel through toolbox meetings. 		
<p>4e. Minimise degradation of conservation significant fauna habitat due to the introduction of weeds and/ or dieback as a result of the Proposal</p>	<ul style="list-style-type: none"> ○ Induct personnel on weed/dieback risks and hygiene ○ Require “clean on entry” for all vehicles/machinery. ○ Dispose of soil/vegetation from clean-down offsite. ○ Maintain hygiene inspection records. ○ Locate stockpiles >50 m from retained vegetation. ○ Clear progressively to reduce weed risk. ○ Undertake annual weed monitoring. 	<p>Induction: prior to site access</p> <p>Clean down: before entry/arrival and as required</p> <p>Weed monitoring: annually</p>	<p>Indicator</p> <ul style="list-style-type: none"> ○ New weed species identified. ○ Vehicles and machinery being “clean on entry” prior to entering the site. <p>Method</p> <ul style="list-style-type: none"> ○ Visual inspections. ○ Opportunistic sightings. ○ Weed control reports. <p>Location</p> <p>Development Envelope.</p>	<ul style="list-style-type: none"> ○ Vehicles not clean on entry. ○ New weed species identified. ○ New areas of weeds infestation identified. ○ Sightings of unusual death of trees. 	<ul style="list-style-type: none"> ○ Investigate cause. ○ Ensure importance of maintaining hygiene is communicated to all personnel. ○ Clean-down affected machinery / vehicles at designated clean/wash down station or return to construction contractor depot. ○ Implement weed control within areas of retained vegetation exhibiting increase in weed density. 	<p>Site Supervisor</p>	<ul style="list-style-type: none"> ○ Induction and training records. ○ Inspection records. ○ Incident reporting system. ○ Material specification certificates. ○ Weed inspection records. ○ Monthly inspection. ○ Annual Compliance Report.

3. Adaptive Management and Review of the CSFMP

3.1 Adaptive Management and Review

Review of learnings from the implementation of management measures will be utilised for the development of adaptive management practices to meet environmental objectives more effectively. The need for adaptive management may be recognised in the following ways:

- Evaluation of assumptions and uncertainties of the conservation significant fauna management and monitoring program;
- Re-evaluation of the risk assessment and revision of risk-based priorities as a result of monitoring outcomes;
- Review of data and information gathered over the review period that has increased understanding of site environment in the context of the regional ecosystem;
- Review of management actions as the Proposal matures, the outcomes of the environmental impact assessment, bushfire and planning process become known and new management measures and technologies become available that may be more effective for conservation significant fauna management; and
- Assessment of changes which are outside the control of the Proposal and the management measures identified (i.e. a new project within the area or region; regional change affecting conservation significant fauna management).

Each adaptive management review will include:

- Review of the outcome(s) and objective(s) that this CSFMP addresses;
- Review of the implementation of the management actions and associated monitoring, recording and reporting requirements; and
- Review of the management actions based on evaluation of:
 - Monitoring data and records;
 - Review of assumptions, uncertainties and understanding (e.g., of the ecological system);
 - Risk assessment; and
 - External changes (e.g., technical advances or innovation).

This CSFMP is to be reviewed by the Proponent at the following intervals:

- Grant or modification of relevant approvals including Development Application;
- When monitoring indicates a potential new or increased impact on conservation significant fauna;
- When monitoring results/findings indicate an unexpected impact, or an unexpected degree of impact, to conservation significant fauna
- Findings or actions identified through monitoring, audits and incident reports;
- Annually from the commencement of construction until the achievement of completion criteria; and
- As and when directed by Chief Executive Officer, Department of Water and Environmental Regulation (DWER) and DCCEEW.

3.2 Reporting

3.2.1 Internal Reporting

Environmental incidents are to be reported in accordance with internal procedures. The incident will be assessed by severity and relevant personnel will be notified and consulted

Table 3-1: Internal Fauna Reporting Actions

Notification Event	Action	Responsibility	Timing
Failure of management target	Internal incident report and investigation.	All personnel/ Project Manager/ Environmental Advisor	Within 24 hours
Contingency exceedance	Internal incident report and investigation. External incident report to regulator.	All personnel/ Project Manager/ Environmental Advisor	Within 7 – 14 days of event
Injury or death of conservation significant fauna	Internal incident report and investigation.	All personnel/ Project Manager/ Environmental Advisor	Within 24 hours
Disturbance to conservation significant fauna habitat outside the approved footprint	Internal incident report and investigation.	All personnel/ Project Manager/ Environmental Advisor	Within 24 hours

3.2.2 External Reporting

Incidents reportable to the DWER and DCCEEW will be in accordance with condition requirements. Reporting to DBCA will be undertaken where it relates to threatened species listed under the BC Act.

4. Communication

4.1 Stakeholder consultation

The Proponent has consulted with a number of stakeholders while developing this plan, consistent with the EPA's expectations to align the plan with the principles of EIA. Specifically, Bamford Consulting Ecologists were engaged to advise on the measures required to mitigate impacts to Western Ringtail Possums. It is noted in the Recovery plan for Western Ringtail Possums that:

"...in working towards effective conservation of the western ringtail possum, other species with similar habitat needs to the western ringtail possum are likely to benefit. Such threatened fauna species include Baudin's cockatoo, brush-tailed phascogale, Chuditch, Carnaby's cockatoo, forest red-tailed black cockatoo (DBCA 2017a)".

The advice provided by Bamford (2024) and ongoing through the development of this CSFMP has been incorporated into this CSFMP and the management measures developed are considered to also benefit other conservation significant fauna species.

4.2 External communications and complaints

The Construction Contractor will develop and maintain a complaints register to record all complaints. Complaints will be recorded by the person who receives the complaint (at the time it is received). Records to be obtained about a complaint include:

- Contact details for the person making the complaint (name and phone number as a minimum);
- Approximate location that the issue was identified by complainant; and
- Date, time and issues that the complaint relates to.

5. Limitations

Scope of services

This report (“the report”) has been prepared by JBS&G in accordance with the scope of services set out in the contract, or as otherwise agreed, between the Client and JBS&G. In some circumstances, a range of factors such as time, budget, access and/or site disturbance constraints may have limited the scope of services. This report is strictly limited to the matters stated in it and is not to be read as extending, by implication, to any other matter in connection with the matters addressed in it.

Reliance on data

In preparing the report, JBS&G has relied upon data and other information provided by the Client and other individuals and organisations, most of which are referred to in the report (“the data”). Except as otherwise expressly stated in the report, JBS&G has not verified the accuracy or completeness of the data. To the extent that the statements, opinions, facts, information, conclusions and/or recommendations in the report (“conclusions”) are based in whole or part on the data, those conclusions are contingent upon the accuracy and completeness of the data. JBS&G has also not attempted to determine whether any material matter has been omitted from the data. JBS&G will not be liable in relation to incorrect conclusions should any data, information or condition be incorrect or have been concealed, withheld, misrepresented or otherwise not fully disclosed to JBS&G. The making of any assumption does not imply that JBS&G has made any enquiry to verify the correctness of that assumption.

The report is based on conditions encountered and information received at the time of preparation of this report or the time that site investigations were carried out. JBS&G disclaims responsibility for any changes that may have occurred after this time. This report and any legal issues arising from it are governed by and construed in accordance with the law as at the date of this report.

Environmental conclusions

Within the limitations imposed by the scope of services, the preparation of this report has been undertaken and performed in a professional manner, in accordance with generally accepted environmental consulting practices. No other warranty, whether express or implied, is made, including to any third parties, and no liability will be accepted for use or interpretation of this report by any third party.

The advice herein relates only to this project and all results conclusions and recommendations made should be reviewed by a competent person with experience in environmental investigations, before being used for any other purpose.

JBS&G accepts no liability for use or interpretation by any person or body other than the client who commissioned the works. This report should not be reproduced without prior approval by the client, or amended in any way without prior approval by JBS&G or reproduced other than in full, including all attachments as originally provided to the client by JBS&G.

6. References

- Bamford Consulting Ecologists (Bamford). (2024). Smith's Beach Coastal Tourism Village Western Ringtail Possum Assessment. Unpublished report prepared for JBS&G.
- Biota. (2020). Western Ringtail Possum, *Pseudocheirus occidentalis*, Regional Surveys. Unpublished report prepared for Main Roads Western Australia.
- Department of Agriculture, Water and the Environment (DAWE). (2022). *Referral guideline for three threatened black cockatoo species: Carnaby's Cockatoo, Baudin's Cockatoo and the Forest Red-tailed Black Cockatoo*. DAWE, Canberra.
- Department of Biodiversity, Conservation and Attractions (DBCA). (2020). *Phytophthora Dieback Management Manual*. DBCA, Perth.
- Department of Biodiversity, Conservation and Attractions (DBCA). (2022). *Methods for survey and identification of WA threatened ecological communities. Draft Version 3.1*. DBCA, Perth.
- Department of Climate Change, Energy, the Environment and Water (DCCEEW). (2024). *Environmental Management Plan Guidelines*. Retrieved from <https://www.dcceew.gov.au/sites/default/files/documents/environmental-management-plan-guidelines.pdf>
- Department of Environment and Conservation (DEC). (2008). *Forest Black Cockatoo (Baudin's Cockatoo *Calyptorhynchus baudinii* and Forest Red-tailed Black Cockatoo *Calyptorhynchus banksii naso*) Recovery Plan*. DEC, Perth.
- Department of Environment and Conservation (DEC). (2009). *Grand Spider Orchid (*Caladenia huegelii*) Recovery Plan*. DEC, Perth.
- Department of Environment and Conservation (DEC). (2010). *Cape Spider Orchid *Caladenia caesarea* subsp. *maritima* Recovery plan. Interim Recovery Plan No. 232*. DEC, Perth.
- Department of Environment and Conservation (DEC). (2012). *Chuditch (*Dasyurus geoffroii*) Recovery Plan*. DEC, Perth.
- Department of Environment, Water, Heritage and the Arts (DEWHA). (2008a). *Threat abatement plan for predation by the European red fox*. DEWHA, Canberra.
- Department of the Environment, Water, Heritage and the Arts (DEWHA). (2008b). *Approved Conservation Advice for *Caladenia excelsa* (Giant Spider orchid)*. DEWHA, Canberra.
- Department of the Environment, Water, Heritage and the Arts (DEWHA). (2009a). *Approved Conservation Advice for *Calyptorhynchus banksia naso* (Forest Red-tailed Black Cockatoo)*. DEWHA, Canberra.
- Department of the Environment, Water, Heritage and the Arts (DEWHA). (2009b). *Significant Impact Guidelines for the vulnerable western ringtail possum (*Pseudocheirus occidentalis*) in the southern Swan Coastal Plain, Western Australia*. Nationally threatened species and ecological communities. EPBC Act Policy Statement 3.10. DEWHA, Canberra.
- Commonwealth Department of the Environment and Energy (DEWHA). (2016). *Threat abatement plan for competition and land degradation by rabbits*. DEWHA, Canberra.
- Department of the Environment (DoE). (2013a). *Significant impact guidelines 1.1 – Environment Protection and Biodiversity Conservation Act 1999 – Matters of National Environmental Significance*. DoE, Canberra.
- Department of the Environment (DoE). (2013b). *Draft survey Guidelines for Australia's threatened orchids*. DoE, Canberra.

- Department of the Environment (DoE). (2014). *Approved Environmental Conservation Management Plan Guidelines*. DoE, Canberra.
- Department of the Environment (DoE). (2015). *Threat abatement plan for predation by feral cats*. DoE, Canberra.
- Department of the Environment and Energy (DoEE). (2016). *Threat abatement plan for competition and land degradation by rabbits*. DoEE, Canberra
- Department of Energy and Environment (DoEE). (2017). *Guidance for delivering 'risk of loss' estimates when evaluating biodiversity offset proposals under the EPBC Act*. DoEE, Canberra.
- Department of Energy and Environment (DoEE). (2018a). *Conservation Advice for Calyptorhynchus baudinii – Baudin's cockatoo*. Threatened Species Scientific Committee, Canberra.
- Department of the Environment and Energy (DoEE). (2018b). *Conservation Advice for Pseudocheirus occidentalis - Western ringtail possum*. Threatened Species Scientific Committee, Canberra.
- Department of the Environment and Energy (DoEE). (2018c). *Threat abatement plan for disease in natural ecosystems caused by Phytophthora cinnamomi*. DoEE, Canberra
- Department of Parks and Wildlife (DPaW). (2013). *Carnaby's Cockatoo (Calyptorhynchus latirostris) Recovery Plan*. DPaW, Perth.
- Department of Parks and Wildlife (DPaW). (2017a). *Western Ringtail Possum (Pseudocheirus occidentalis) Recovery Plan*. DPaW, Perth.
- Department of Parks and Wildlife (DPaW). (2017b). *Western Ringtail Possum (Pseudocheirus occidentalis) Recovery Plan*, Wildlife Management Program No. 58. Department of Parks and Wildlife.
- Department of Sustainability, Environment, Water, Population and Communities (DSEWPaC). (2011). *Survey guidelines for Australia's threatened mammals. EPBC Act survey guidelines 6.5*. DSEWPaC, Canberra.
- Department of Sustainability, Environment, Water, Population and Communities (DSEWPaC). (2012a). *Environment Protection and Biodiversity Conservation Act 1999 Environmental Offsets Policy*. DSEWPaC, Canberra.
- Department of Sustainability, Environment, Water, Population and Communities (DSEWPaC). (2012b) *Offset Assessments Guide*. DSEWPaC, Canberra.
- Department of Sustainability, Environment, Water, Population and Communities (DSEWPaC). (2012c). *Offset Calculator Guidelines*. DSEWPaC, Canberra.
- Emerge Associates. (2019). *Spring Flora and Vegetation Assessment Lot 4131 Smiths Beach Road, Yallingup*. Unpublished report prepared for Smiths 2014 Pty Ltd.
- Environmental Protection Authority (EPA). (2010). *Technical guidance – Terrestrial Vertebrate Fauna Surveys for Environmental Impact Assessment*. EPA, Perth.
- Environmental Protection Authority (EPA). (2013). *Environmental Protection Bulletin No.20: Protection of Naturally vegetated Areas through Planning and Development*. EPA, Perth.
- Environmental Protection Authority (EPA). (2014a). *Western Australian Environmental Offsets Guidelines, August 2014*. EPA, Perth.
- Environmental Protection Authority (EPA). (2014b). *Western Australian Environmental Offsets Template, 2014*. EPA, Perth.
- Environmental Protection Authority (EPA). (2016a). *Environmental Factor Guideline – Terrestrial Fauna*. EPA, Perth.

- Environmental Protection Authority (EPA). (2016b). *Technical Guidance – Sampling of short-range invertebrate fauna*. EPA, Perth.
- Environmental Protection Authority (EPA). (2016c). *Environmental Factor Guidelines: Flora and Vegetation*. EPA, Perth.
- Environmental Protection Authority (EPA). (2016d). *Technical Guidance - Flora and Vegetation Surveys for Environmental Impact Assessment*. EPA, Perth.
- Environmental Protection Authority (EPA). (2020a). *Technical guidance – Terrestrial vertebrate fauna surveys for environmental impact assessment*. EPA, Perth.
- Environmental Protection Agency (EPA). (2020b). *Instructions for the preparation of data packages for the Index of Biodiversity Surveys for Assessments (IBSA)*. EPA, Perth.
- Environmental Protection Authority (EPA). (2021). *Instructions: How to prepare Environmental Protection Act 1986 Part IV Environmental Management Plans*. Retrieved from https://www.epa.wa.gov.au/sites/default/files/Forms_and_Templates/Preparing%20Environmental%20Protection%20Act%201986%20PIV%20environmental%20management%20plans.pdf
- JBS&G. (2023). *Smiths Beach Project, Yallingup – Coastal Tourism Village, Environmental Scoping Document – Assessment Number: 2340*. Retrieved from https://www.epa.wa.gov.au/sites/default/files/Environmental_scoping_document/59550%20Smiths%20Beach%20ESD%20%28Rev%207%29.pdf
- Mathieson, T. J., Close, P. G., Van Helden, B. E., Speldewinde, P. C., & Comer, S. (2020). New evidence of unexpectedly high animal density and diet diversity will benefit the conservation of the Critically Endangered western ringtail possum. *Austral Ecology*. <https://doi.org/10.1111/aec.12874>.
- McGregor Coxall. (2021). *Smiths Beach Project – Landscape Report*. Report prepared for Smiths 2014 Pty Ltd.
- Nature Conservation Margaret River Region. (n.d.). *Western Ringtail Possums and your property, a guide to conserve and encourage them on your patch*. https://natureconservation.org.au/wp-content/uploads/2018/05/WESTERN_RINGTAIL_POSSUM-and-your-property-A5-booklet.pdf
- Patten, J., Webb, A., and Batty, A., (2005). *Dunsborough spider orchid (Caladenia viridescens) Interim Recovery Plan 2005-2010*.
- Strategen-JBS&G. (2021). *Smiths Beach Stage 2 Approvals – Foreshore Vegetation Assessment*. Technical Memorandum prepared for Smiths 2014 Pty Ltd.
- Thompson, S. A., & Thompson, G. G. (2009). A case for in situ management of Western Ringtail Possums, *Pseudocheirus occidentalis*, in development areas. *Journal of the Royal Society of Western Australia*, 92, 269–276.

Appendix A Risk Assessment

Each environmental risk identified has been provided a likelihood and consequence rating using the criteria in Table 6-1 and Table 6-2. These ratings are then combined using Table 6-3 to generate a risk rating of low, medium, high or severe. Table 6-4 details the findings of the risk assessment for the potential impacts from the Proposal.

Table 6-1: Likelihood

Qualitative Measures for likelihood (How likely is it that this event/issue after control strategies have been put in place)	
Highly likely	Is expected to occur in most circumstances.
Likely	Will probably occur during the life of the project.
Possible	Might occur during the life of the project.
Unlikely	Could occur but considered unlikely or doubtful.
Rare	May occur in exceptional circumstances.

Table 6-2: Consequence

Qualitative Measures for consequence (what will be the consequence/result if this issue does occur rating)	
Minor	Minor incident of environmental damage that can be reversed.
Moderate	Isolated but substantial instances of environmental damage that could be reversed with intensive efforts.
High	Substantial instances of environmental damage that could be reversed with intensive efforts.
Major	Major loss of environmental amenity and real danger of continuing.
Critical	Severe widespread loss of environmental amenity and irrecoverable environmental damage.

Table 6-3: Risk Rating

	Consequence				
	Minor	Moderate	High	Major	Critical
Highly likely	Medium	High	High	Severe	Severe
Likely	Low	Medium	High	High	Severe
Possible	Low	Medium	Medium	High	Severe
Unlikely	Low	Low	Medium	High	High
Rare	Low	Low	Low	Medium	High

Table 6-4: Risk Assessment of Potential Impacts from the Proposal

Potential Impacts	Inherent Risk Rating			Mitigation measures	Residual Risk Rating		
	Likelihood	Consequence	Risk		Likelihood	Consequence	Risk
Loss of native vegetation	Highly Likely	High	High	<ul style="list-style-type: none"> Implement induction and education programmes. Design measures to avoid the clearing of terrestrial fauna habitat where possible, including locating infrastructure in existing disturbed areas. Demarcation of clearing areas to prevent unauthorised clearing outside of approved footprint. Refer to Objective (1), (2) and (4).	Highly Likely	High	High
Injury and/or mortality of conservation significant fauna due to vehicle strike	Highly Likely	Moderate	High	<ul style="list-style-type: none"> Implement induction and education programmes. Promote driver awareness/training and implement appropriate speed limits. Enforce strict traffic management rules (e.g. keeping to designated tracks, limiting driving at dusk and dawn, driving to road and weather conditions, reduced speed limits, signage of fauna along roads) to avoid accidental disturbance to fauna and habitat. Record any injury or death of fauna to relevant agencies and as per internal processes. Refer to Objective (1).	Possible	Moderate	Medium
Habitat fragmentation	Highly Likely	Moderate	High	<ul style="list-style-type: none"> Conservative approach to Proposal design to maximise retention of canopy through innovative methods such as partial modification. Require site layout designed to reduce habitat fragmentation and provide corridors allowing fauna to move through the landscape on all sides of development. Demarcation of clearing areas to prevent unauthorised clearing outside of approved footprint. 	Likely	Moderate	Medium

Potential Impacts	Inherent Risk Rating			Mitigation measures	Residual Risk Rating		
	Likelihood	Consequence	Risk		Likelihood	Consequence	Risk
				<ul style="list-style-type: none"> Introduce canopy dwelling fauna with movement alternatives such as possum bridges. Refer to Objective (2), (3) and (4).			
Weeds/Degradation	Possible	Moderate	Medium	<ul style="list-style-type: none"> Implement vehicle hygiene management procedures and requirements for all new vehicles and equipment to be certified clean and weed-free prior to mobilisation to site. Enforce strict traffic management rules (e.g. keeping to designated tracks) to reduce the introduction and spread of weeds. Vehicles are not permitted to leave access tracks or cleared areas to reduce the spread of weeds. Weed monitoring. Undertake progressive land clearing minimising the amount of active disturbance present at any one time to reduce the opportunity for weeds to become established. Refer to Objective (4).	Unlikely	Moderate	Low
Dieback	Possible	Moderate	Medium	<ul style="list-style-type: none"> Implement vehicle hygiene management procedures and requirements for all new vehicles and equipment to be certified clean and weed-free prior to mobilisation to site. Enforce strict traffic management rules (e.g. keeping to designated tracks) to reduce the introduction and spread of dieback. Vehicles are not permitted to leave access tracks or cleared areas to reduce the spread of dieback. Dieback monitoring. Refer to Objective (4).	Unlikely	Moderate	Low
Introduced fauna and attraction of predators or competitors	Possible	High	Medium	<ul style="list-style-type: none"> Implement induction and education programmes. Ensure appropriate fencing is constructed where required. Implement domestic waste management procedures (e.g. fencing of landfills, regularly covering putrescible waste, secure lids on bins, designed to avoid ponding water) to avoid attraction of both feral and native species to the Project area. Undertake pest animal control on site in cooperation with regional control programs where appropriate. Refer to Objective (1).	Unlikely	High	Medium
Altered fire regimes	Possible	High	Medium	<ul style="list-style-type: none"> Implement induction and education programmes. Undertake regular maintenance of fire breaks and implement fire management procedures (e.g. Hot Work Permit system, firefighting training, Emergency Response Plan) to avoid increases in fire frequency. Fire control equipment to be present and available on site and in all vehicles. Refer to Objective (4).	Unlikely	High	Medium

Appendix B Guidelines for on ground selection of vegetation to be retained

Selection of vegetation to be retained, within the constraints of bushfire regulations, should be guided by the following principles:

1. Priority should be given to retaining large native trees, particularly those with a diameter at breast height (DBH) greater than 500 mm, as they have a higher likelihood of developing into future nesting trees for black cockatoos and may already contain small hollows. These smaller hollows provide important shelter for various fauna, including conservation significant species such as the Western Ringtail Possum, Wambenger Brush-tailed Phascogale and Masked Owl.
2. Trees which already contain Western Ringtail Possum dreys should be prioritised for retention, to minimise disturbance and impact to this species.
3. Species with dense structural form should be prioritised for retention, as they provide important shelter and connectivity for a range of ground dwelling fauna.
4. Understorey and groundcover vegetation should be retained in a manner that establishes continuous corridors of connectivity within the Development Envelope and between adjacent areas of remnant vegetation.
5. Tree and shrub species listed in Table 6-5 should be prioritised for retention due to their recognised ecological importance for conservation significant fauna species.

Table 6-5 Species to be priorities for retention

Species and common name	Relevance for conservation significant fauna
Trees and shrubs	
<i>Agonis flexuosa</i> WA Peppermint/Wanil	<ul style="list-style-type: none"> ○ Western Ringtail Possum habitat trees and provide high quality foliage, sites to build dreys, canopy connectivity. ○ May also provide shelter opportunities for Wambenger Brush-tailed Phascogale and Quenda.
<i>Corymbia calophylla</i> Marri	<ul style="list-style-type: none"> ○ Provide habitat value for Western Ringtail Possum as they ecological functions, including food from new growth and flowers, shelter through drey-building opportunities, and canopy connectivity for movement. Taller trees also offer increased protection from predators. ○ Marri trees are of high ecological value, offering important foraging resources for all three species of black cockatoo. These should be prioritised for retention wherever possible. Large Marri trees, particularly those with a DBH greater than 500 mm (such as the cluster located within the Development Envelope) are especially important and should be retained wherever practicable due to their significant habitat value. ○ Older trees may develop hollows which can also be used by Barking Owl and Wambenger Brush-tailed Phascogale.
<i>Eucalyptus marginata</i> Jarrah	<ul style="list-style-type: none"> ○ Provide habitat value for Western Ringtail Possum as they ecological functions, including food from new growth and flowers, shelter through drey-building opportunities, and canopy connectivity for movement. Taller trees also offer increased protection from predators. ○ Jarrah trees are of lower priority for black cockatoo foraging compared to Marri however should still be retained where possible.

Species and common name	Relevance for conservation significant fauna
<i>Allocasuarina fraseriana</i> Sheoak	<ul style="list-style-type: none"> ○ Contribute to Western Ringtail Possum canopy connectivity and provide sites for dreys, also a food plant. ○ Quenda and Wambenger Brush-tailed Phascogale. may use the leaf litter and shelter beneath dense sheoak stands.
<i>Melaleuca huegelii</i> Melaleuca/paperbark	<ul style="list-style-type: none"> ○ Western Ringtail Possums may use for building dreys, protection from predators and flowers provide food. ○ Quenda, Skink, and Brush Wallaby likely use dense understorey for refuge. ○ Flowers provide food for pollinators and nectarivorous birds.
<i>Nuytsia floribunda</i> Moodjar or Christmas tree	<ul style="list-style-type: none"> ○ <i>Nuytsia floribunda</i> is of high cultural significance. From an ecological perspective this species provides food for Western Ringtail Possum and connectivity. It is considered a high priority for retention.
<i>Banksia attenuata</i> <i>Banksia sessilis</i> var. <i>cordata</i> (P4) Banksias	<ul style="list-style-type: none"> ○ Shelter, connectivity and provide some provide food for Western Ringtail Possum ○ Banksia trees and shrubs provide valuable foraging opportunities for black cockatoos (primarily Carnaby's and Baudin's) and are also important for nectarivorous birds and foraging for Western Ringtail Possum.
<i>Acacia saligna</i> <i>Acacia cyclops</i> Wattles	<ul style="list-style-type: none"> ○ Known and likely food plants for Western Ringtail Possum, large trees may contribute to canopy connectivity. ○ Provide dense low cover, aiding in shelter and predator avoidance for Quenda, Skink and Brush Wallaby. May also support insect prey for Barking Owl and Wambenger Brush-tailed Phascogale.

Appendix C Proposed Monitoring Program for Western Ringtail Possum

The table below outlines a monitoring program for Western Ringtail Possums; however, it is intended to be refined in consultation with DBCA as needed once a fauna specialist is engaged on the Project to support the ongoing monitoring efforts.

Table 6-6 Proposed Western Ringtail Possum Monitoring Program

Metric	Purpose	Method
Number of Western Ringtail Possum individuals within the Development Envelope	<ul style="list-style-type: none"> Compliance with Outcome (3) and Outcome (4). 	<ul style="list-style-type: none"> Systematically traverse Development Envelope and count all individuals (consider use of drone-mounted heat sensor cameras). Area covered and time spent (e.g. overall survey effort) must be consistent over time. Record number of individuals counted across entire Development Envelope and location of each individual.
Frequency of use of possum bridges (crossings per night)	<ul style="list-style-type: none"> To aid investigation into the cause/s if Outcome (3) and Outcome (4) trigger/threshold is reached. To provide information regarding success of Objective (2) (enhance connectivity). 	<ul style="list-style-type: none"> Motion sensor cameras at end of each bridge heading into National Park to monitor use of bridges and movement in and out of Development Envelope. Record, for each bridge: <ul style="list-style-type: none"> Time period assessed. How many crossings were made per night. How many unique individuals were identified using bridges.
Condition of possum bridges	<ul style="list-style-type: none"> To aid investigation into the cause/s if Outcome (3) and Outcome (4) trigger/threshold is reached. To provide information regarding success of Objective (3) (enhance connectivity). 	<ul style="list-style-type: none"> Visual check of all possum bridges to ensure no blockages, breakages, or other issues that prevent possums from traversing the bridge. Motion sensor cameras to monitor use of bridges and identify any potential issues (e.g. predators, competition). Record, for each bridge: <ul style="list-style-type: none"> Date/time of check Is the bridge blocked or broken? Is there disturbance (light, noise) nearby, Is there any evidence of predators or other species using the bridge? If any issues are noted, what action will be taken to resolve the issue and who is the responsible person.
Condition of dreys (retained natural dreys, relocated natural dreys, and artificial dreys)	<ul style="list-style-type: none"> To aid investigation into the cause/s if Outcome (5) trigger/threshold is reached. To provide information regarding success of Objective (3) (enhance connectivity) and Objective (2b) (maximise resource availability) 	<ul style="list-style-type: none"> Visual check of all dreys to assess condition. Pole camera and heat-sensing camera to monitor use of dreys. For each drey, record: <ul style="list-style-type: none"> Date/time of check Is the drey being occupied by Western Ringtail Possum?

Metric	Purpose	Method
		<ul style="list-style-type: none"> - Does the drey look used? (eg. is it lined? Is there fur or other evidence of use?) - Evidence of predators or competitors? <p>If any issues are noted, what action will be taken to resolve the issue and who is the responsible person.</p>
Condition of above ground water sources	<ul style="list-style-type: none"> o To provide information regarding success of Objective (3) (enhance connectivity) and Objective (2b) (maximise resource availability) 	<ul style="list-style-type: none"> o Visual check of all above-ground water sources to ensure they are functional and accessible for possums. o Record, for each water-source: <ul style="list-style-type: none"> - The date/time of the check - Is water present? - Is water clean? - Is there disturbance nearby? - Are water sources being used? - Are there any issues preventing Western Ringtail Possum from accessing the water source? - Are there any signs of predators or competitors? - If any issues are noted, what action will be taken to resolve the issue and who is the responsible person.
Incidences of Western Ringtail Possum coming to ground	<ul style="list-style-type: none"> o Required to inform Outcome (2) especially if a near-miss or injury or mortality occurs and investigation is required. o To aid investigation into the cause/s if Outcome (2) and Outcome (3) trigger/threshold is reached. 	<ul style="list-style-type: none"> o Train/educate all personnel on importance of reporting sightings and process for reporting incident/sighting. o Keep incident log of what was observed and what was done in response. <p>For example -</p> <p>On <date> Western Ringtail Possum observed on the ground.</p> <p>On <date> one Western Ringtail Possum observed on the ground and was then lost in the understorey. Works were stopped until the following day.</p> <p>On <date> one Western Ringtail Possum observed on the ground. Works were stopped until the individual was observed returning to the canopy; then works were started again.</p>
Incidents relating to a near-miss or injury/mortality of Western Ringtail Possum	<ul style="list-style-type: none"> o Required to inform Outcome (2) especially if a near-miss or injury or mortality occurs and investigation is required. o To aid investigation into the cause/s if Outcome (3) and Outcome (4) trigger/threshold is reached 	<ul style="list-style-type: none"> o Train/educate all personnel on importance of reporting sightings/incidents and process for reporting incident/sighting. o Keep incident log of what was observed/what occurred and what was done in response. <p>For example -</p> <p>On <date> there was a near-miss in which an undetected Western Ringtail Possum was sheltering in a hollow of a tree that was removed. Works were stopped until the Western Ringtail Possum could be safely removed from the hollow (by a trained fauna handler) and relocated into nearby retained habitat.</p>

Metric	Purpose	Method
Sightings of predators (cats, foxes, unrestrained dogs)	<ul style="list-style-type: none"> Required to inform Outcome (2) especially if a near-miss or injury or mortality occurs and investigation is required and Objective 1(b) contingency actions. 	<ul style="list-style-type: none"> Train/educate all personnel on importance of reporting sightings of predators and process for reporting sightings. Keep incident log of what was observed/what occurred and what was done in response.
Density of Western Ringtail Possum in a 200m buffer zone into adjacent vegetation ⁴	<ul style="list-style-type: none"> To provide evidence of achievement of Objective (3) and Outcome (2). 	Estimated via distance sampling as per methodology in Biota (2020)

4

This will assist with interpretation of changes in abundance of Western Ringtail Possum in the Development Envelope. For example, if the abundance of possums within the Development Envelope decreases while their density in the surrounding buffer vegetation increases, it may be inferred that individuals have successfully relocated from the Development Envelope into adjacent habitat—particularly if supported by evidence of possum bridges connecting the two areas being used. To confidently interpret an increase in density, control sites isolated from both the Development Envelope and adjacent vegetation are necessary. This helps ensure that observed changes are not due to other factors such as seasonal variation or weather conditions affecting detection rates.

Appendix D Proposed Pre-clearance Trapping Program

Purpose: To relocate native fauna (other than Western Ringtail Possum) away from areas to be cleared.

Brief summary: It is proposed that prior to the beginning of clearing works, a fence (that will prevent movement of ground-dwelling fauna) is constructed around the clearing footprint. Within the clearing footprint, pitfall traps (with drift fences) and cage traps are to be deployed for at least 5 nights (longer if Quenda are still being caught), seven days prior to clearing occurring. Active searching is also suggested, to target reptile species. For reptiles, pitfall traps will be more successful in warmer weather and hand searching will be more successful in colder weather. The best approach for reptiles should therefore be determined based on the timing of clearing.

It is proposed that fauna trapped or caught via active searching will be released in nearby native vegetation outside of the exclusion fence as the intention is that fauna can then return to the Development Envelope once clearing/construction is complete. This will be determined in consultation with DBCA.

Target species:

- Quenda (*Isoodon fusciventer*): Priority 4 DBCA
- Coastal Plains Skink (*Ctenotus ora*): Priority 3 DBCA

Other fauna species are likely to be captured, including a variety of frogs, lizards and snakes in pitfall traps, and small mammals and possibly some birds in cage traps.

Fencing requirements: to exclude ground-dwelling fauna, the exclusion fence requires a skirt of fine mesh (or similar), securely buried into the ground and extending at least 30cm high, to prevent small animals such as the Coastal Plains Skink from moving through the fence.

Note regarding Wambenger Brush-tailed Phascogales:

This species is unlikely to be trapped in cage traps at ground level. Individuals are likely to either naturally disperse in a similar manner to Western Ringtail Possum (if trees to be cleared are made less attractive by pruning etc.) or will stay sheltered in tree hollows. It is suggested that this species is managed via careful felling of trees and checking of all hollows; this will already need to be done to check for undetected Western Ringtail Possum. Any dead wood or naturally fallen trees may also provide shelter for this species and should be checked prior to removal.

Appendix E Assessment against Western Ringtail Possum Recovery Plan Objectives

Table 6-7 below outlines how this CSFMP addresses the key objectives and relevant actions identified in the Western Ringtail Possum Recovery Plan (DPaW 2017a), demonstrating how proposed management, monitoring and mitigation measures target identified threatening processes, support population viability, maintain habitat connectivity and contribute to both local and regional conservation outcomes.

Table 6-7 Assessment against Western Ringtail Possum Recovery Plan Objectives and Actions

Recovery Plan Objective	Recovery Plan Actions	CSFMP Alignment	Relevant Section of CSFMP
<p>1. Habitat critical for survival for western ringtail possums is identified and protected in each key management zone</p>	<p>Action 1.2 Identify and implement effective strategies to achieve the protection of higher ranked habitat, on public and private land, in each of the key management areas.</p>	<p>The Proposal has retained 2.11 ha of WRP habitat within POS and Conservation lots, ensuring that critical habitat areas are maintained. A dedicated Western Ringtail Possum Habitat Conservation and Connectivity Zone has been established, retaining approximately 40% canopy cover and prioritising tree species that provide suitable forage and shelter (refer Outcome 2 Table 2-1). Additional habitat structures, including artificial dreys, possum bridges, and water sources, will be installed to support in-situ occupancy. This approach aligns with the objective by maintaining core habitat, preserving canopy connectivity and facilitating safe movement within and adjacent to the Development Envelope. Ongoing monitoring of canopy cover, habitat condition, and artificial structure usage ensures that habitat quality and functionality are maintained over time.</p>	<p>Outcome based provisions (1), (3), (4) and (5) in Table 2-1</p> <p>Objective based provisions (2), (3) and (4) in Table 2-2</p>
<p>2. Threatening processes that are constraining the recovery of western ringtail possums are mitigated in each key management zone</p>	<p>Action 2.1 Work with fire management agencies to implement improved fire management strategies that minimise the impact of fire prevention, fuel reduction and fire suppression activities on western ringtail possums and their habitat, without increasing the risks of large, higher intensity fires.</p>	<p>The Proposal adopts a partial modification approach in accordance with bushfire requirements, which balances the need for fuel reduction and fire risk mitigation with the retention of critical Western Ringtail Possum habitat. This approach focuses on retaining as much native vegetation as possible, particularly canopy trees and high-value forage species, while creating strategically designed fire management zones. Artificial bridges will be installed to maintain habitat connectivity and their placement will include areas where firebreaks are required on site. By integrating fire risk management with habitat retention, the Proposal reduces the potential for high-intensity fires, maintains connectivity between retained habitats and ensures ongoing protection of Western Ringtail Possum populations within and adjacent to the Development Envelope.</p>	<p>Outcome based provisions (3) and (4) in Table 2-1</p> <p>Objective based provisions (2) and (4) in Table 2-2</p>
	<p>Action 2.2 Implement management strategies to minimise, or compensate for the</p>	<p>Hygiene protocols and disease management strategies are applied within the Proposal to minimise impacts on habitat quality. Dieback hygiene procedures, vehicle and equipment cleaning are required to be implemented prior to and during vegetation works. These</p>	<p>Objective based provisions (4E) in Table 2-2</p>

Recovery Plan Objective	Recovery Plan Actions	CSFMP Alignment	Relevant Section of CSFMP
	<p>impacts of disease, pathogens or insects that are likely to impact western ringtail possum habitat quality, including Myrtle Rust surveillance, Phytophthora dieback hygiene protocols etc.</p>	<p>measures maintain the integrity of retained and rehabilitated habitat, ensuring that plant species critical for Western Ringtail Possum forage and shelter remain resilient.</p>	
	<p>Action 2.3 Implement effective, integrated introduced predator control programs on DPaW managed land and seek to have a coordinated approach to control of introduced predators across different land tenures to maximise effectiveness</p>	<p>The Proposal incorporates integrated predator control measures, including restrictions on domestic cats and dogs and coordination with neighbouring landholders DBCA on their managed land (Leeuwin-Naturaliste National Park). Regular monitoring of predator activity, combined with adaptive response measures, ensures that introduced predator impacts are minimised across the Development Envelope and adjacent habitats, supporting Western Ringtail Possum survival.</p>	<p>Objective based provision (1b) in Table 2-2</p>
	<p>Action 2.6 Implement management strategies to protect important habitat trees and habitat of extant populations during planning, timber harvest and other forest management activities under the FMP.</p>	<p>The Proposal implements targeted management strategies to protect important habitat trees and critical Western Ringtail Possum habitat within the Development Envelope. Pre-clearing tree surveys will be undertaken to identify significant canopy trees, known drey locations, and key forage species to inform the retention and protection of habitat features. Dreys will be carefully retained in situ where possible and significant trees supporting dreys will be prioritised to maintain core habitat and connectivity. By prioritising the protection of high-value trees and associated structures, these measures support the long-term conservation and functional integrity of Western Ringtail Possum populations while enabling necessary forest management and development activities. Furthermore, clearing within the Western Ringtail Possum Habitat Conservation and Connectivity Zone will not occur during the identified Western Ringtail Possum peak breeding season as determined in consultation</p>	<p>Outcome based provision (5) in Table 2-1</p> <p>Objective based provisions (2a), (2b), (3a), (4a), (4b), (4c), (4d) in Table 2-2</p> <p>Appendix B Guidelines for on ground selection of vegetation to be retained</p>

Recovery Plan Objective	Recovery Plan Actions	CSFMP Alignment	Relevant Section of CSFMP
		with a suitably qualified fauna specialist based on current scientific information and site-specific observations.	
	Action 2.7 Implement a process to ensure research and management actions associated with western ringtail possums (including offsets) are consistent with the conservation and recovery objectives for the species	All management and rehabilitation actions have been developed in line with the Western Ringtail Possum Recovery Plan, ensuring consistency with conservation objectives.	Table 6-7
	Action 2.10 Support and develop programs aimed at identifying, restoring or creating suitable habitat, including ecological linkages for the species	The Proposal includes for the establishes establishment of connectivity corridors through canopy retention and the installation of bridges and artificial dreys within the Western Ringtail Possum Habitat Conservation and Connectivity Zone and throughout the Development Envelope into adjacent National Park.	Outcome based provisions (1), (3), (4) and (5) in Table 2-1 Objective based provisions (2), (3) and (4) in Table 2-2
	Action 2.12 Improve scientific understanding of the benefits of an urban environment, strategies to enhance urban environments, and its role in the future conservation.	Evidence-based monitoring within the Development Envelope, including use of artificial structures in a semi-urban interface will contribute to understanding Western Ringtail Possum use of modified landscapes. Data gathered will inform future management strategies for urban and peri-urban habitats.	Monitoring program outlined in Appendix C
3. An evidence-based approach is applied to the management and recovery of	Action 3.3 Establish a long-term monitoring and evaluation program to detect	Management of Western Ringtail Possums within the Development Envelope is guided by an evidence-based approach, informed by pre-clearing surveys of dreys, canopy corridors, and Western Ringtail Possum activity, as well as ongoing adaptive monitoring. Motion-sensitive cameras on possum bridges and record-keeping of sightings and incidents support evaluation of habitat use and connectivity. This systematic collection of data ensures that management	Monitoring program outlined in Appendix C

Recovery Plan Objective	Recovery Plan Actions	CSFMP Alignment	Relevant Section of CSFMP
western ringtail possums.	population changes, within defined sites.	actions can be adjusted in response to observed outcomes, such as the movement of Western Ringtail Possum through the site, occupancy of artificial dreys, and the effectiveness of bridges and corridors. By monitoring outcomes and updating management measures, the Proposal demonstrates an evidence-based commitment to species recovery.	
	<p>Action 3.6 Survey areas where western ringtail possums have been known to occur within the last 10 years, areas at the edge of known distributions, and areas with suitable habitat to clarify distribution (i.e. extent of occurrence) and occupancy (i.e. area of occupancy).</p>	Pre-clearing and targeted surveys have been conducted within and adjacent to the Development Envelope and future surveys are planned to further understand current distribution and occupancy of Western Ringtail Possums, providing essential baseline data to guide habitat protection, connectivity measures and adaptive management in the design.	<p>Objective based provision (4b) in Table 2-2</p> <p>Monitoring program outlined in Appendix C</p>
	<p>Action 3.10 Improve knowledge of the novel benefits and costs of habitat in urban environments and their role in the conservation of western ringtail possums.</p>	Monitoring of Western Ringtail Possum use of urban interface areas will contribute to understanding how modified landscapes affect survival and behaviour, providing guidance for future urban habitat management.	Monitoring program outlined in Appendix C
4. The management of displaced, orphaned, injured and rehabilitated western ringtail possums aids the conservation	<p>Action 4.1 Develop rehabilitation protocols and standard operating procedures to manage and ensure best-practice rehabilitation and release of orphaned and injured western ringtail possums.</p>	A proactive approach is in place to manage Western Ringtail Possums that may be displaced or injured due to development activities. Unoccupied dreys are only relocated under supervision, injured or orphaned individuals are transferred to licensed carers and Western Ringtail Possums. These measures ensure that individual animals are protected, rehabilitation efforts are supported and functional habitat is preserved, contributing to overall species conservation.	<p>Outcome based provision (2) in Table 2-1</p> <p>Objective based provision (1a) in Table 2-2</p>

Recovery Plan Objective	Recovery Plan Actions	CSFMP Alignment	Relevant Section of CSFMP
outcome for the species			
5. Increased awareness of the status of western ringtail possums and support behaviour change to mitigate anthropogenic threatening processes.	<p>Action 5.1 Develop information aimed at increasing community understanding and gaining support for western ringtail possum conservation issues and management.</p>	The development incorporates targeted education and training for all personnel, ensuring awareness of Western Ringtail Possum conservation requirements and behavioural protocols to minimise impacts. Staff inductions, ongoing guidance and monitoring compliance foster responsible practices during clearing and construction.	Objective based provision (1a) and (4c) in Table 2-2
	<p>Action 5.2 Encourage, co-ordinate and enhance the involvement of groups engaged in western ringtail possum conservation.</p>	The development incorporates targeted education and training for all personnel, ensuring awareness of Western Ringtail Possum conservation requirements and behavioural protocols to minimise impacts. Staff inductions, ongoing guidance, and monitoring compliance foster responsible practices during clearing and construction.	Objective based provision (1a) and (4c) in Table 2-2
	<p>Action 5.3 Increase awareness of the species conservation requirements in areas of high development potential</p>	Information and guidance are provided to personnel and contractors in areas identified as high development potential to ensure Western Ringtail Possum presence is recognised and activities are managed to reduce disturbance, supporting conservation outcomes.	Objective based provision (1a) and (4c) in Table 2-2


© JBS&G

This document is and shall remain the property of JBS&G. The document may only be used for the purposes for which it was commissioned and in accordance with the Terms of Engagement for the commission. Unauthorised use of this document in any form whatsoever is prohibited

Document Distribution

Rev No.	Copies	Recipient	Date
0	1: Electronic	EPA (draft review)	08/08/2024
1B	1: Electronic	H-U	21/11/2024
1	1: Electronic	EPA (revised draft post agency feedback)	22/11/2024
2	1: Electronic	EPA (revised draft post RTS)	13/08/2025
3	1: Electronic	EPA (Revised draft post comments on RTS)	22/10/2025
4	1: Electronic	EPA (Revised draft post comments on RTS)	08/12/2025
5	1: Electronic	EPA (Revised draft post comments on RTS)	09/12/2025
6	1: Electronic	EPA (Revised draft post comments on RTS)	10/12/2025

Document Status

Rev No.	Author	Reviewer Name	Approved for Issue		Date
			Name	Signature	
0	Y. Seesaha	A. Latto	A. Latto		06/08/2024
1	Y. Seesaha	K. Raiter	K. Raiter	K. Raiter	21/11/2024
2	BCE/ K. Raiter/ R. Mason	R. Mason	J. Blitz	J. Blitz	13/08/2025
3	R. Mason	A. Latto	A. Latto	A. Latto	21/10/2025
4	R. Mason	H-U	H-U	H-U	08/12/2025
5	R. Mason	H-U	H-U	H-U	09/12/2025
6	R. Mason	H-U	H-U	H-U	10/12/2025



Adelaide

Kaurna Country | 100 Hutt St,
Adelaide, SA 5000
T: 08 8431 7113

Brisbane

Turrbal/Yuggera Country | Level 37,
123 Eagle Street, Brisbane, QLD 4000
T: 07 3211 5350

Bunbury

Wardandi Country | 177 Spencer
Street Bunbury, WA 6230
T: 08 9792 4797

Canberra

Ngunnawal Country | Level 1, The Realm
18 National Circuit Barton, ACT 2600
T: 02 6198 3278

Darwin

Larrakia Country | Suite G1, Level 1,
48-50 Smith Street, Darwin NT 0800
T: 08 8943 0600

Hobart

Muwununa/Nuenon Country | Level 6,
111 Macquarie Street Hobart, TAS 7000
T: 03 6108 9054

Melbourne

Wurundjeri Country | Level 19,
31 Queen Street, Melbourne VIC 3000
T: 03 9642 0599

Newcastle

Awabakal/Worimi Country | 61 / 63
Parry Street Newcastle West, NSW 2302
T: 02 8245 0300

Perth

Whadjuk Country | Allendale Square,
Level 9, 77 St Georges Terrace, WA 6000
T: 08 9380 3100

Sydney

Gadigal Country | Level 1,
50 Margaret Street, Sydney, NSW 2000
T: 02 8245 0300

Wollongong

Dharawal Country | Suite 1A, 280 - 286
Keira Street, Wollongong, NSW 2500
T: 02 4225 2647