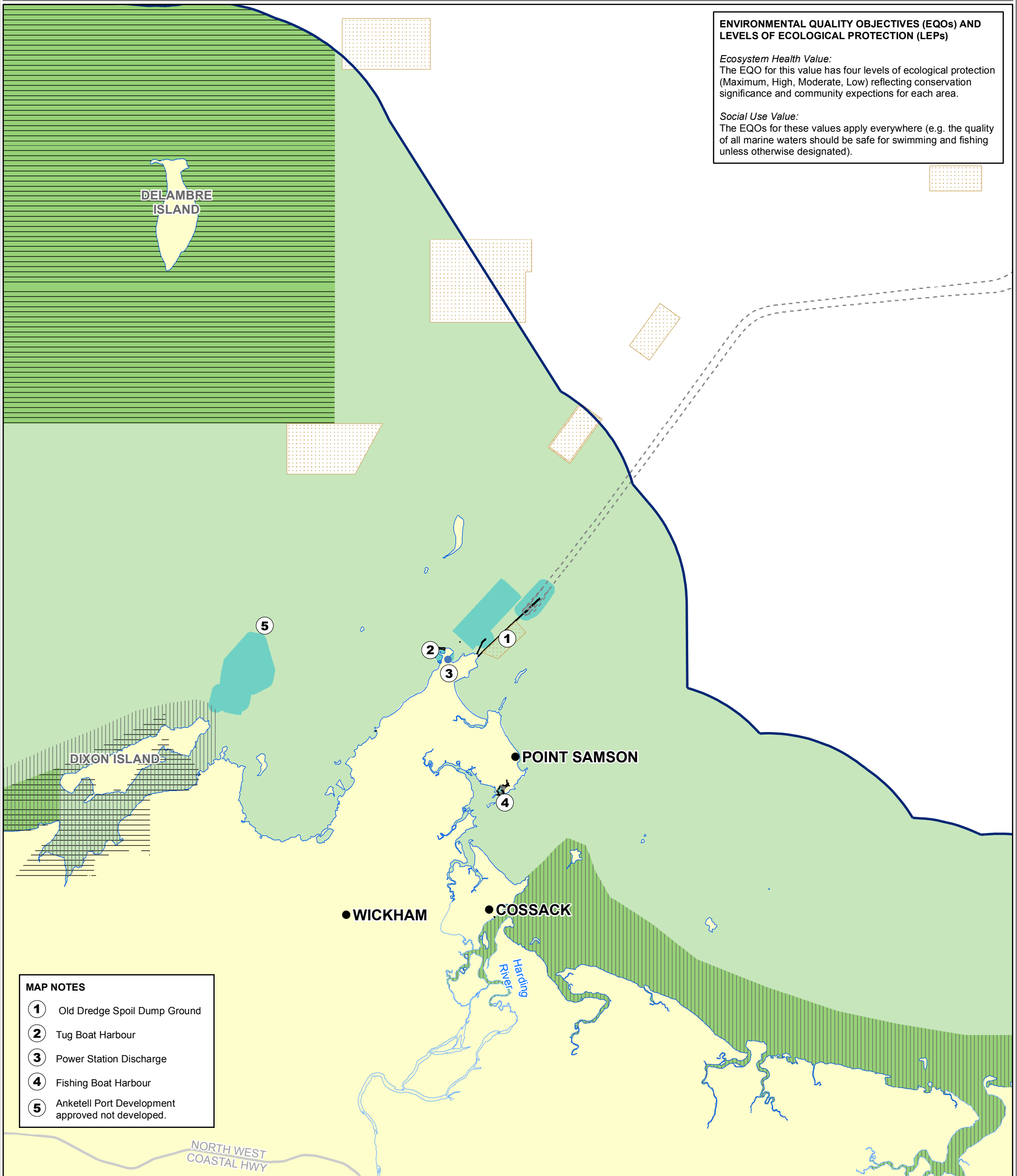


# Map 9: Cape Lambert

## ENVIRONMENTAL QUALITY OBJECTIVES (EQOs) AND LEVELS OF ECOLOGICAL PROTECTION (LEPs)

**Ecosystem Health Value:**  
The EQO for this value has four levels of ecological protection (Maximum, High, Moderate, Low) reflecting conservation significance and community expectations for each area.

**Social Use Value:**  
The EQOs for these values apply everywhere (e.g. the quality of all marine waters should be safe for swimming and fishing unless otherwise designated).



- MAP NOTES**
- ① Old Dredge Spoil Dump Ground
  - ② Tug Boat Harbour
  - ③ Power Station Discharge
  - ④ Fishing Boat Harbour
  - ⑤ Anketell Port Development approved not developed.

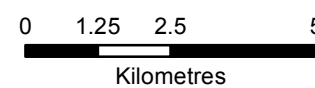
- LEGEND**
- Towns
  - Waste Water Discharge Location
  - - - Dredged Channel
  - ▨ Dredge Spoil Dump
  - Road
  - State Coastal Waters Limit
  - ▨ Regionally Significant Arid Zone Mangrove
  - ▨ Proposed Marine Conservation Reserve
- Level of Ecological Protection**
- Maximum
  - High
  - Moderate
  - Low

**SOURCE DATA**  
 DWER: Levels of Ecological Protection (2019), Regionally Significant Arid Zone Mangroves (2001)  
 Landgate: Towns, Rivers, Roads (2015)  
 Geoscience Australia: State Coastal Waters Limit (2016)  
 DoT, Pilbara Port Authority, DWER: Coastal Infrastructure, Dredged Areas, Dredge Spoil Dump Areas (2016, 2017)  
 Proponents: Salt Works, Approved Ministerial Statements  
 DBCA: Marine Conservation Reserve (2016)

DWER GIS Section  
 Date: 30/01/2019, Map Version: 4

**Disclaimer:**  
 This map is intended as a generalised interpretation of environmental issues. The information contained on this map is to be considered indicative only and in no event shall the Department of Water and Environmental Regulation be liable for any incident or consequential damages resulting from use of the material.

Copyright Department of Water and Environmental Regulation, 2017.  
 All Rights Reserved. All works and information displayed are subject to Copyright. For the reproduction or publication beyond that permitted by the Commonwealth Copyright Act 1968 written permission must be sought from the Agency.



Projection: Map Grid of Australia Zone 50  
 Datum: Geocentric Datum of Australia, 1994  
 Scale: 1:130,000 at A3

### LOCALITY MAP

